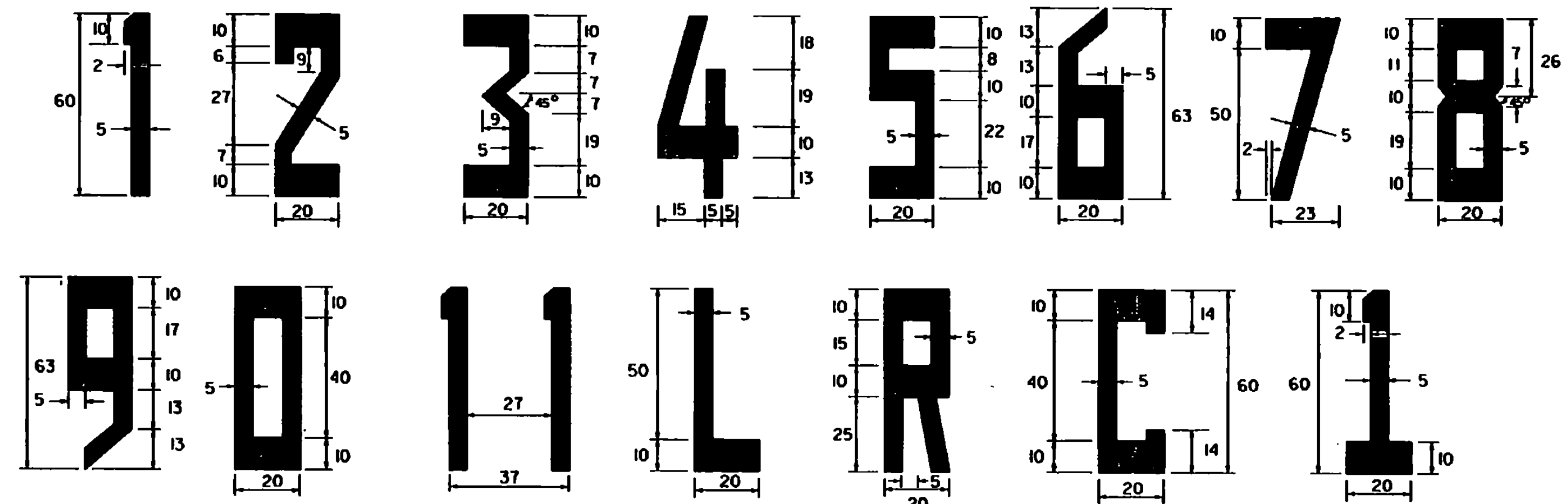
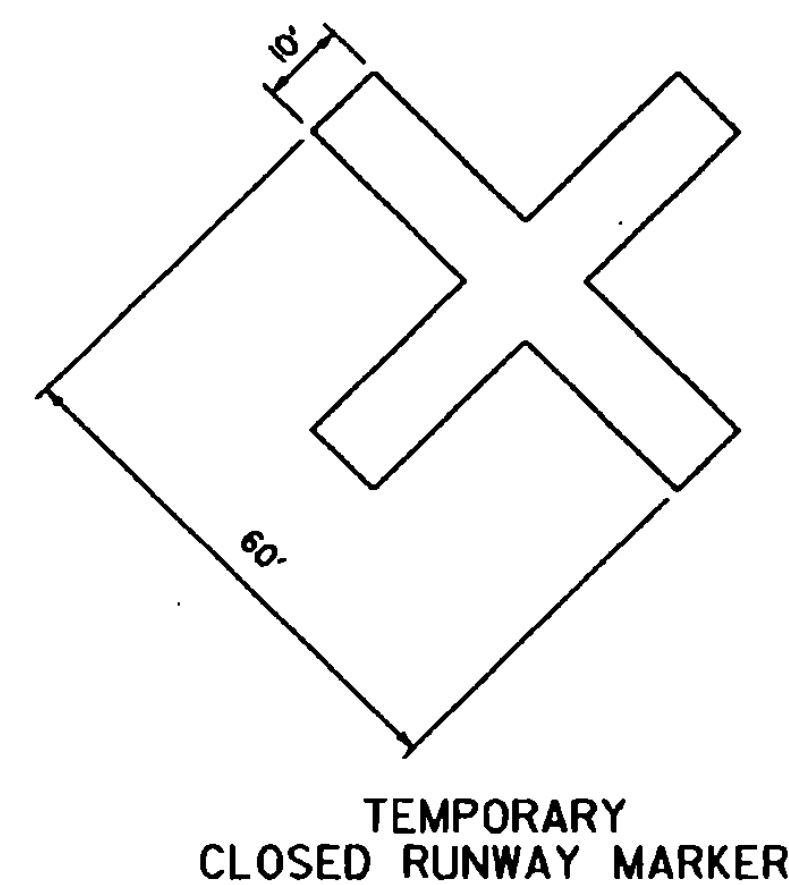
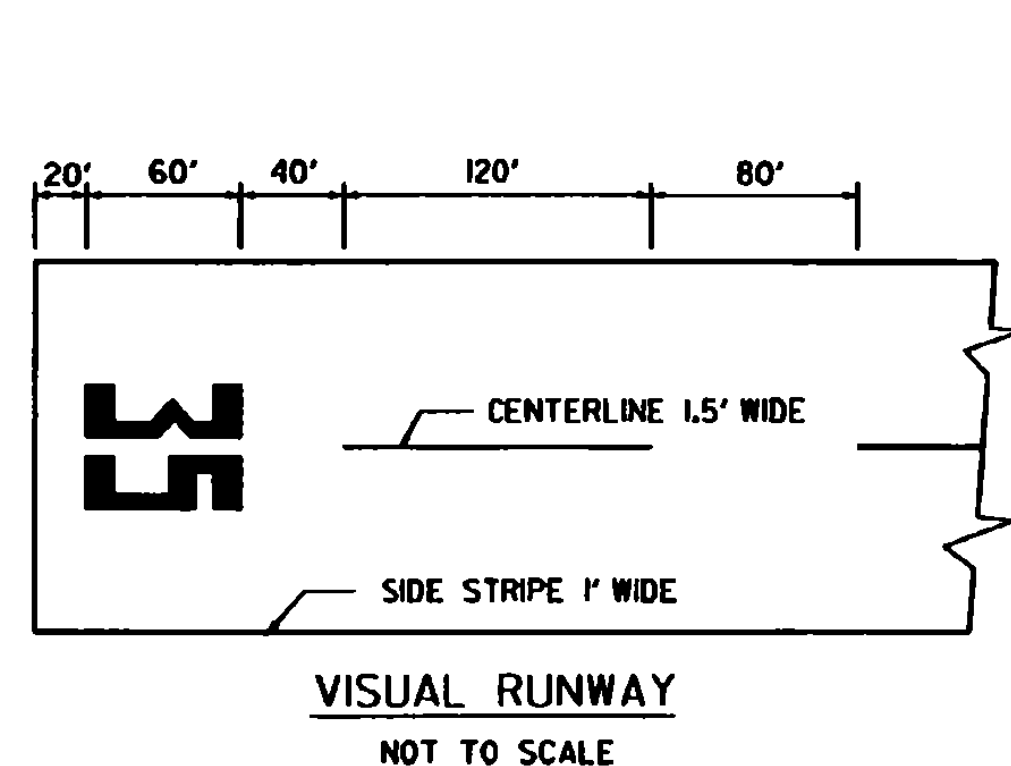


- NOTES**
1. FOUR ARROWHEADS ARE PLACED SYMMETRICALLY ACROSS RUNWAY WITH UNIFORM LATERAL SPACING AS INDICATED.
 2. ALL MARKINGS IN THE DISPLACED AREA ARE YELLOW EXCEPT THE THRESHOLD BAR WHICH IS WHITE.
 3. RUNWAY SIDE STRIPES, WHEN USED ON THE RUNWAY, EXTEND INTO THE DISPLACED AREA.



- NOTES**
1. ALL LETTERS AND NUMERALS, EXCEPT THE NUMBER ELEVEN AS SHOWN, ARE HORIZONTALLY SPACED 15 FEET APART.
 2. DIMENSIONS ARE EXPRESSED IN FEET.
 3. THE NUMERAL ONE, WHEN USED ALONE, CONTAINS A HORIZONTAL BAR TO DIFFERENTIATE IT FROM THE RUNWAY CENTERLINE MARKING.



- TEMPORARY CLOSED RUNWAY MARKER NOTES :**
1. MARKERS TO BE YELLOW PLYWOOD OR SNOW FENCE.
 2. MARKERS TO BE SUBSIDIARY TO OTHER PAY ITEMS.
 3. MARKERS TO BE PLACED OVER RUNWAY NUMERALS OR OFF THE RUNWAY ENDS AS APPLICABLE.
 4. MARKERS TO BE ANCHORED TO THE SATISFACTION OF THE ENGINEER.

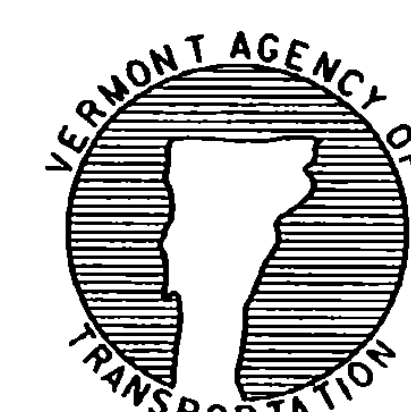
- GENERAL NOTES**
1. ALL RUNWAY MARKINGS ARE WHITE EXCEPT IN THE DISPLACED THRESHOLD AREA AND NON FULL STRENGTH SHOULDER MARKINGS.
 2. FOR RUNWAYS LESS THAN 150' IN WIDTH, THE WIDTH OF THE MARKINGS, SPACES BETWEEN MARKINGS, AND DISTANCE OF MARKINGS FROM THE RUNWAY EDGE ARE CHANGED PROPORTIONALLY.
 3. ADJUSTMENTS TO THE LENGTH OF THE CENTERLINE STRIPES AND GAPS, WHERE NECESSARY TO ACCOMMODATE THE RUNWAY LENGTH, ARE MADE NEAR THE RUNWAY MIDPOINT.
 4. ALL RUNWAY MARKINGS ARE TO BE STRIATED WITH ALL STRIPES AND SPACES EQUAL IN WIDTH (4" TO 6").

NOTE :
MARKING OF RUNWAY SHOULD BE BASED ON FAA SPECIFICATIONS. SEE CURRENT FAA ADVISORY CIRCULAR.

REVISIONS AND CORRECTIONS
JUNE 29, 1982 - ORIGINAL APPROVAL DATE
MAR. 5, 1990 - SHEET UPDATED
JUNE 1, 1994 - REISSUED, WITHOUT CHANGE, UNDER NEW SIGNATURE.

APPROVED
APPROVED FOR THIS PROJECT AND/OR DESIGN IMPLEMENTATION. FHWA FINAL APPROVAL PENDING.
W. S. [Signature]
DIRECTOR OF RAIL, AIR AND PUBLIC TRANSIT

RUNWAY MARKING DETAILS



STANDARD AP-10