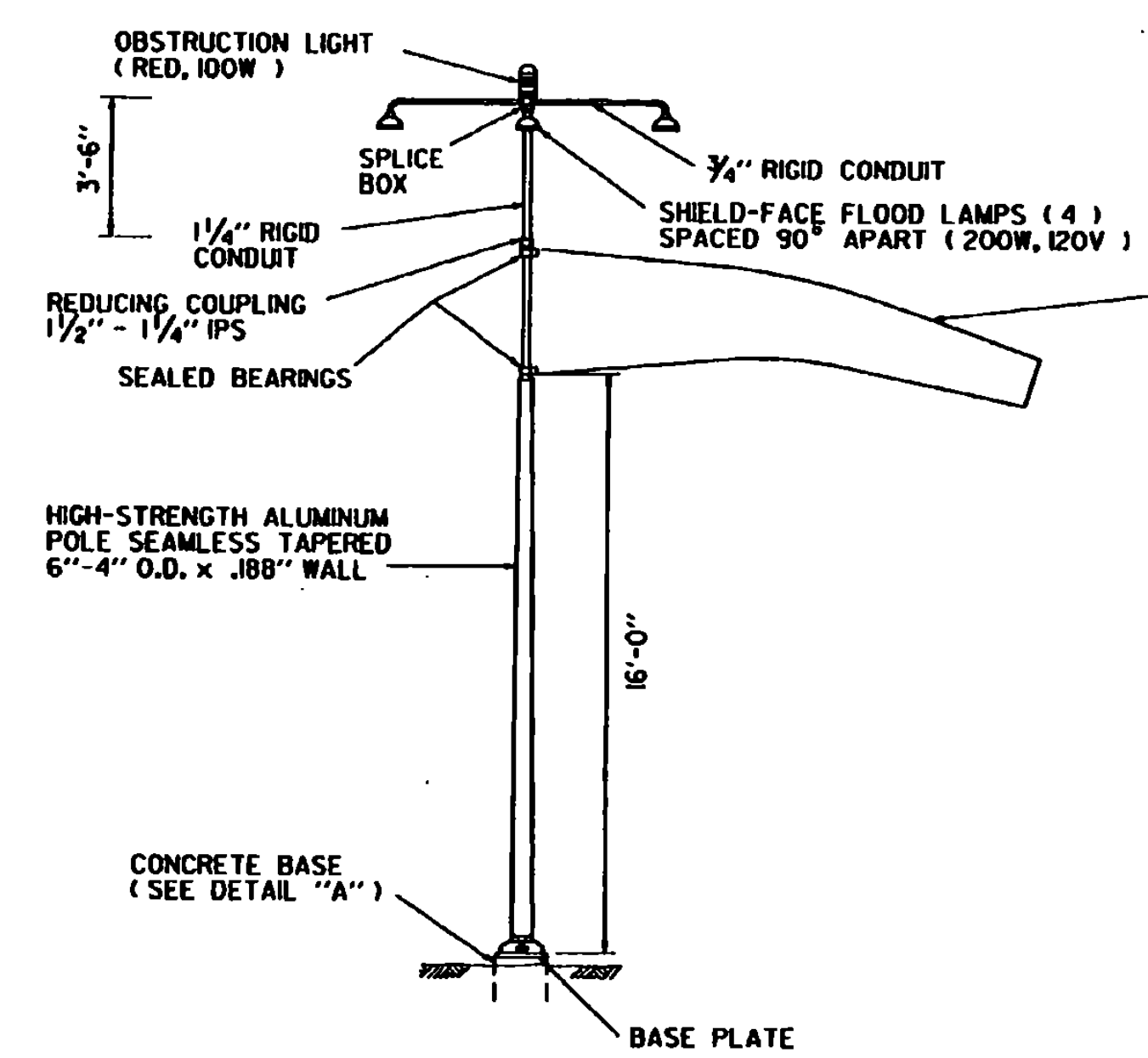
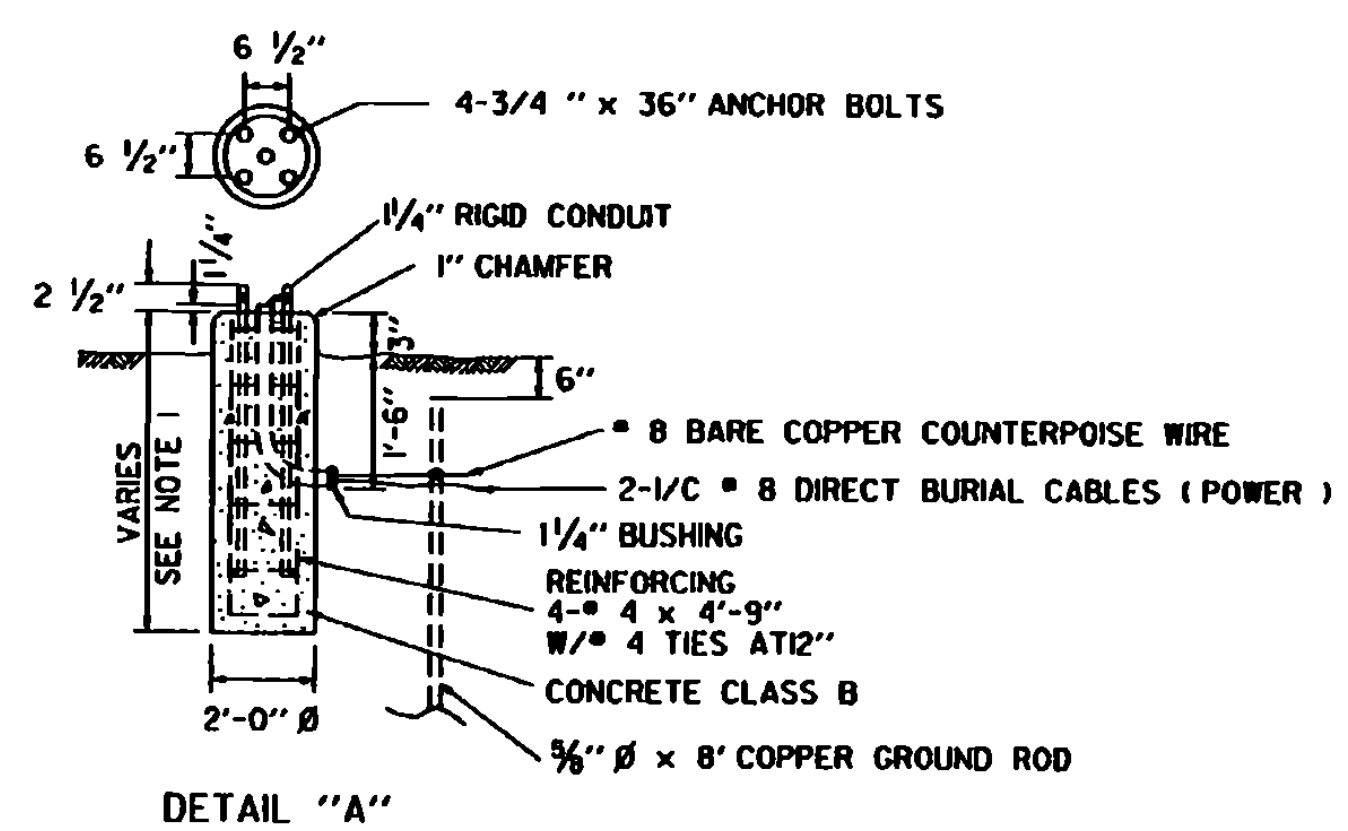


RUNWAY END IDENTIFIER LIGHTS (REILS) L-849

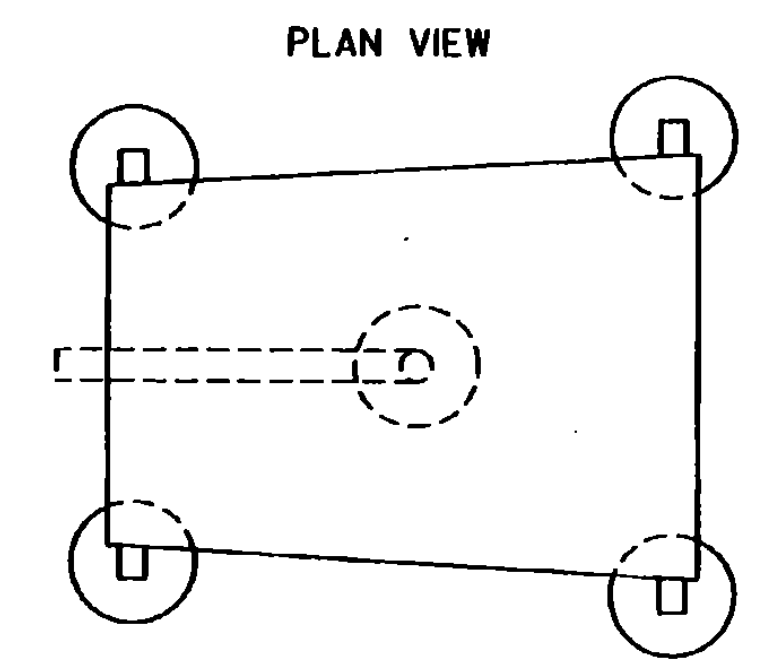
NOTES:
 1. TERMINATE GROUND WIRE INSIDE EQUIPMENT HOUSING. REFER TO MANUFACTURER'S RECOMMENDATIONS FOR MOUNTING REIL UNITS.



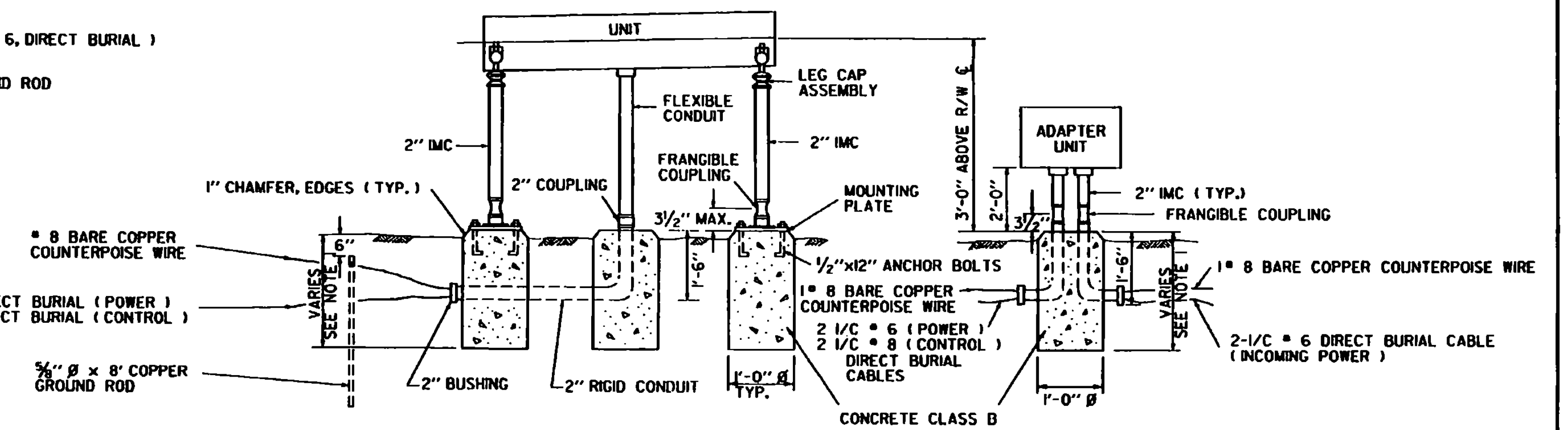
EIGHT FOOT OR TWELVE FOOT ILLUMINATED WIND CONE L-806



NOTES:
 1. ALL FOUNDATIONS SHOULD EXTEND ONE (1) FOOT BELOW AVERAGE FROST PENETRATION. (SEE STANDARD AP-1)
 2. TERMINATE COUNTERPOISE WIRES INSIDE EQUIPMENT HOUSING.



NOTES:
 SYSTEM TO INCLUDE 2 OR 4 UNITS. SEE AIRPORT PLAN-LAYOUT SHEET FOR SYSTEM TO BE INSTALLED. ONE ADAPTER UNIT TO BE INSTALLED PER SYSTEM.



PRECISION APPROACH PATH INDICATOR (PAPI)
 L880 (4 LIGHT UNITS)
 L881 (2 LIGHT UNITS)

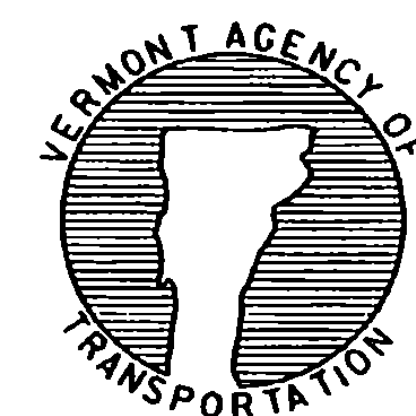
REVISIONS AND CORRECTIONS
 DEC. 15, 1981 - ORIGINAL APPROVAL DATE
 MAR. 5, 1990 - SHEET UPDATED
 JUNE 1, 1994 - REISSUED, WITHOUT CHANGE, UNDER NEW SIGNATURES.

APPROVED

 DIRECTOR OF RAIL, AIR AND PUBLIC TRANSIT

APPROVED FOR THIS PROJECT AND/OR DESIGN IMPLEMENTATION. FHWV FINAL APPROVAL PENDING.

VISUAL APPROACH AIDS



STANDARD
 AP-4