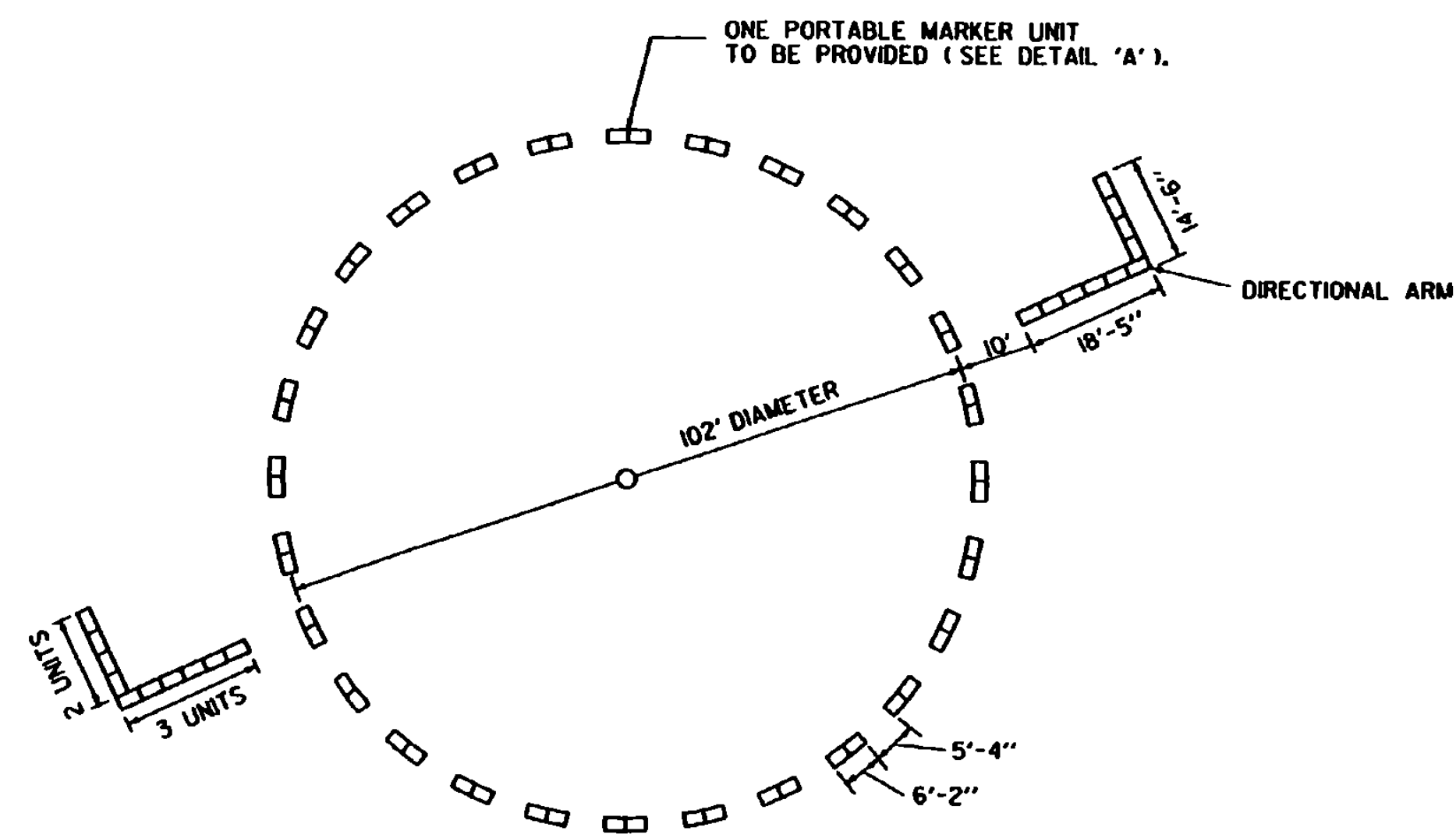
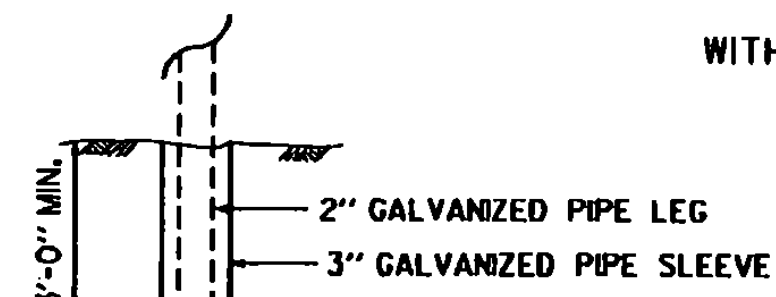


NOTES

1. THE LOCATION OF THE PORTABLE MARKER UNIT SHALL BE AS ORDERED BY THE ENGINEER.
2. DIRECTIONAL ARMS ARE INSTALLED ONLY ON AIRPORTS WITH A NON-STANDARD TRAFFIC PATTERN (RIGHT-HAND PATTERN). WHEN INSTALLED, DIRECTIONAL ARMS WILL BE MAGNETICALLY ORIENTED TO THE RUNWAY AND WILL SHOW TRAFFIC PATTERN ON EACH RUNWAY.

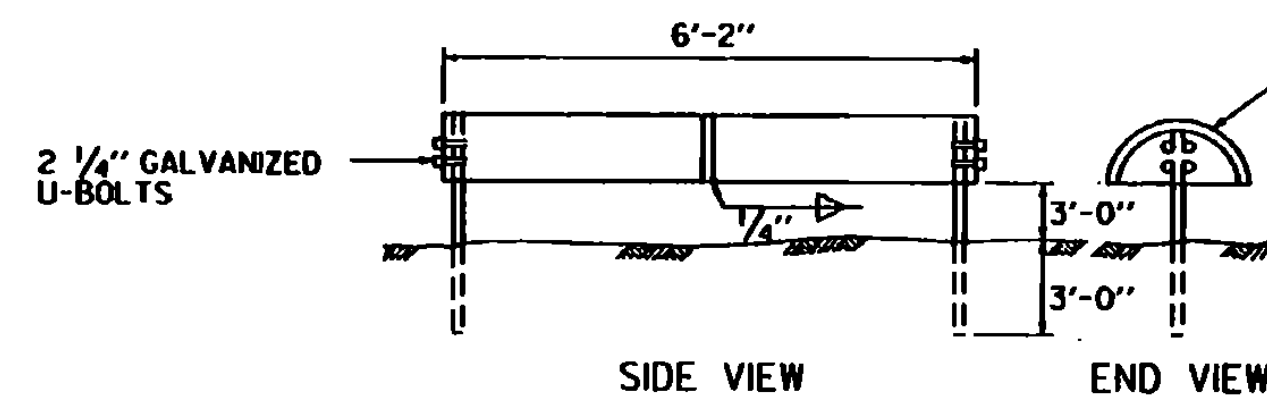


SEGMENTED CIRCLE LAYOUT WITH DIRECTIONAL ARMS



LEG DETAIL FOR PORTABLE MARKER UNIT

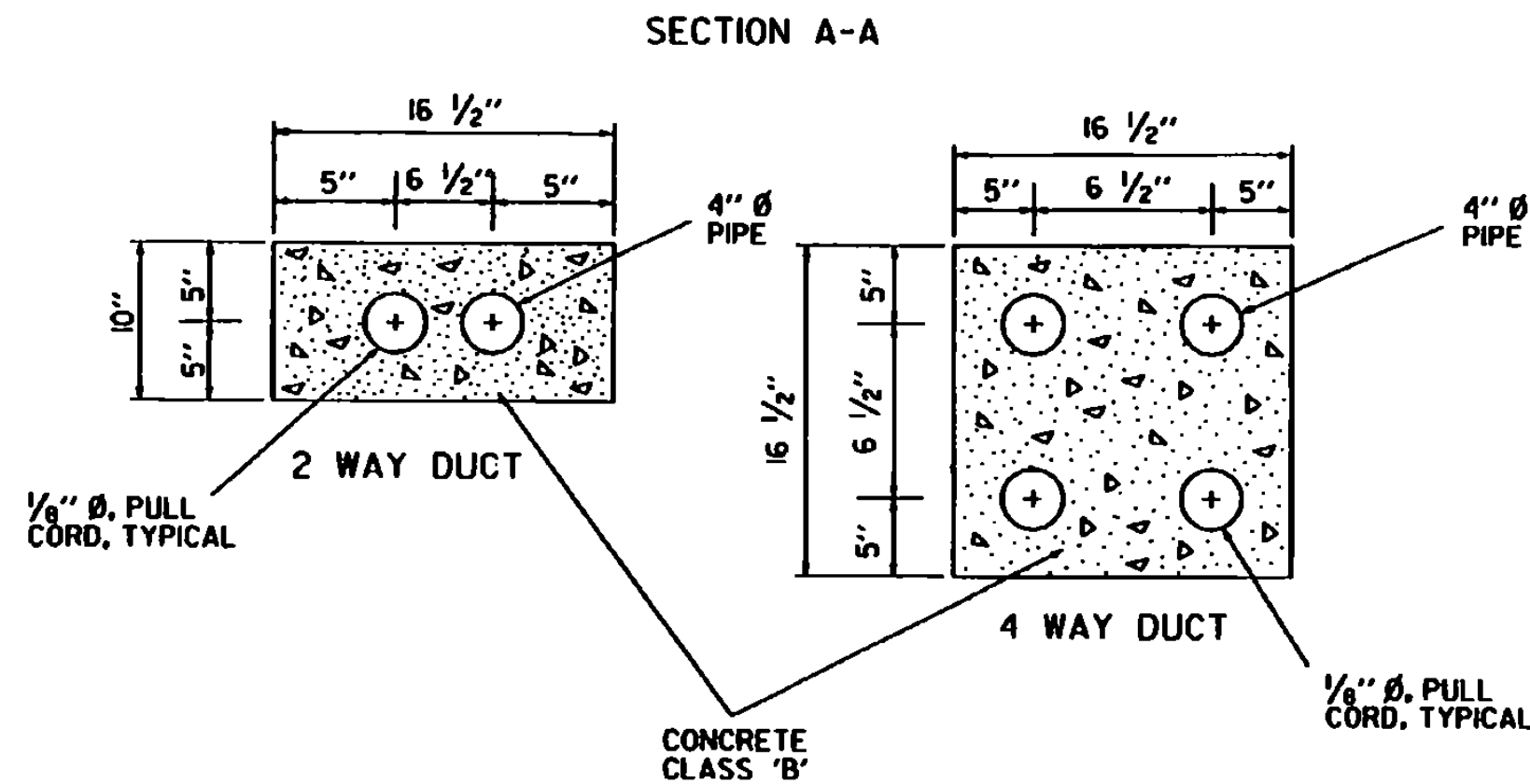
DETAIL 'A'



SEGMENTED CIRCLE MARKER UNIT

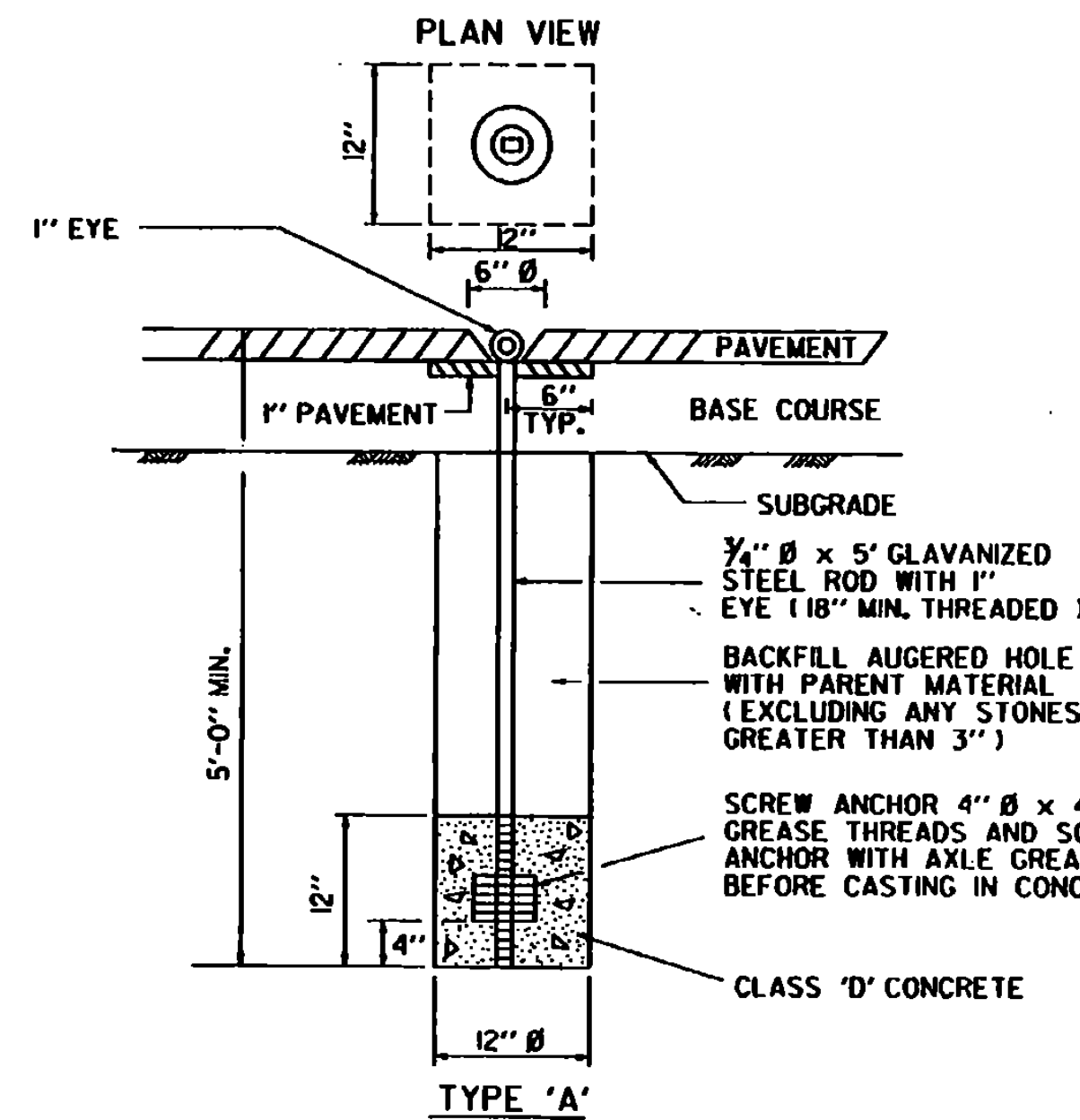
MARKER UNIT - STANDARD 55 GALLON METAL DRUM CUT IN HALF AND WELDED END TO END. MARKER UNITS TO BE PAINTED AVIATION ORANGE.

PORTABLE UNIT HAS LEGS OF 2" β GALVANIZED PIPE. STATIONARY UNITS HAVE LEGS OF 2" β GALVANIZED PIPE OR 1 1/2" x 3/8" L (GALV.).

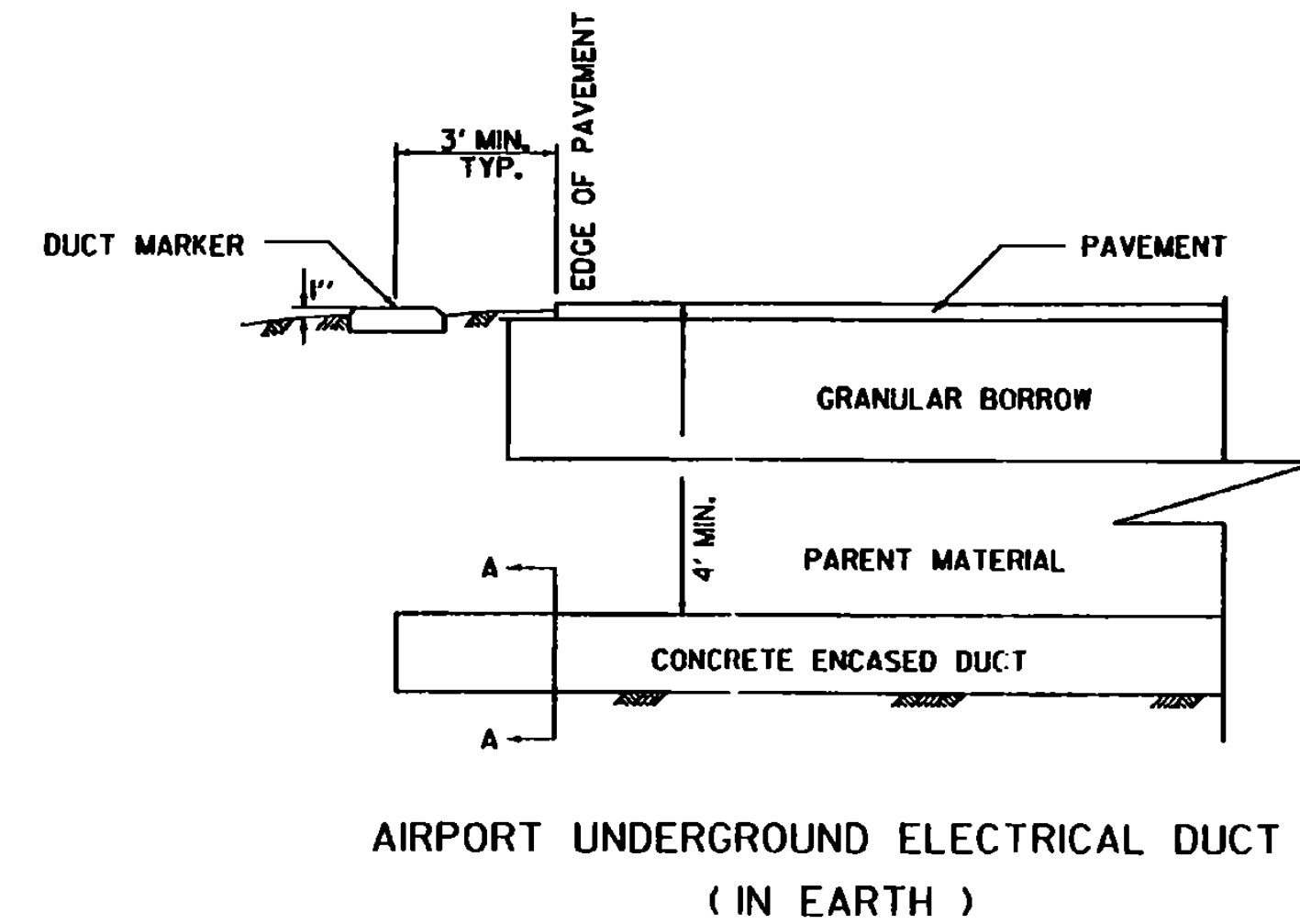


ALL DUCTS, EXCEPT STEEL CONDUIT, INSTALLED UNDER RUNWAYS, TAXIWAYS, APRONS, AND OTHER PAVED AREAS SHALL BE ENCASED IN A CONCRETE ENVELOPE

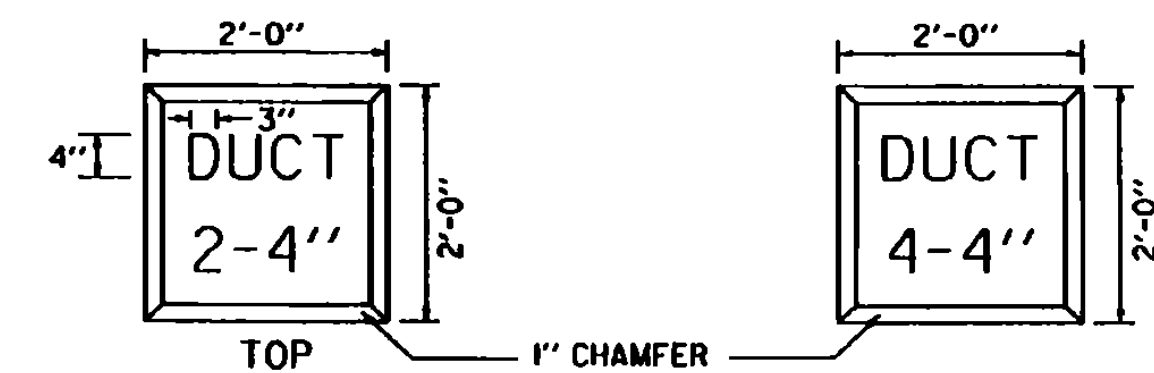
SEE STANDARD AP-2 FOR DIRECT BURIAL CABLE DETAILS.



AIRCRAFT TIE DOWN ANCHOR

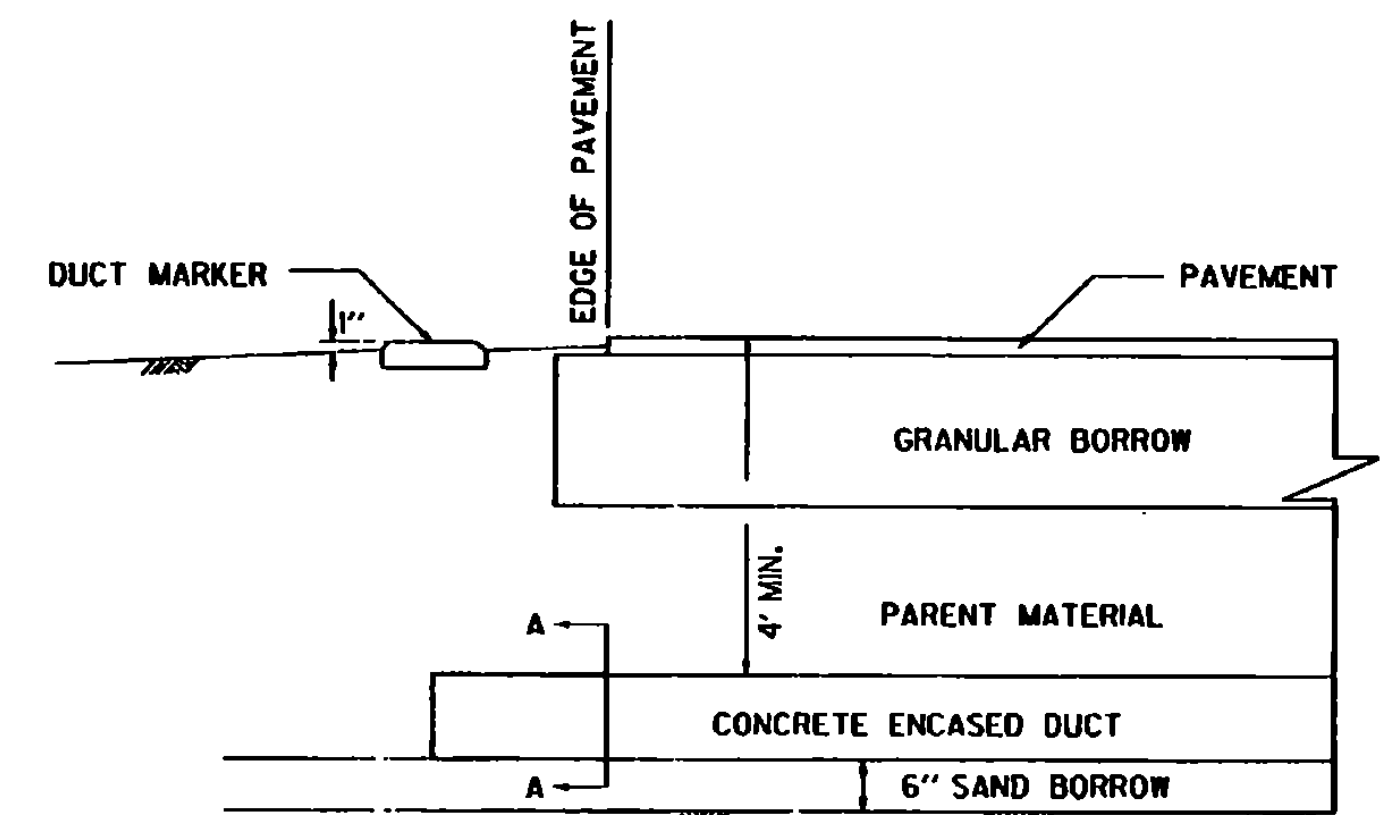


AIRPORT UNDERGROUND ELECTRICAL DUCT (IN EARTH)



DUCT MARKERS

- NOTES
1. LETTERING ON DUCT MARKERS TO BE EMBOSSED, 1/4" CUT, 1/2" DEEP.
 2. HAND LETTERING NOT ALLOWED



AIRPORT UNDERGROUND ELECTRICAL DUCT (IN ROCK)

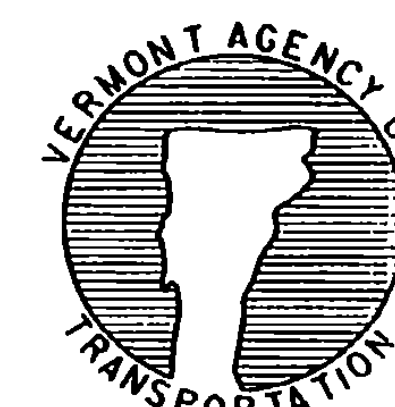
REVISIONS AND CORRECTIONS

DEC. 15, 1981 - ORIGINAL APPROVAL DATE
MAR. 5, 1990 - SHEET UPDATED
JUNE 1, 1994 - REISSUED, WITHOUT CHANGE, UNDER NEW SIGNATURES.

APPROVED

APPROVED FOR THIS PROJECT AND/OR DESIGN IMPLEMENTATION, FINNA FINAL APPROVAL PENDING.
W. B. ...
DIRECTOR OF RAIL, AIR AND PUBLIC TRANSIT

MISCELLANEOUS AIRPORT DETAILS



STANDARD AP-3