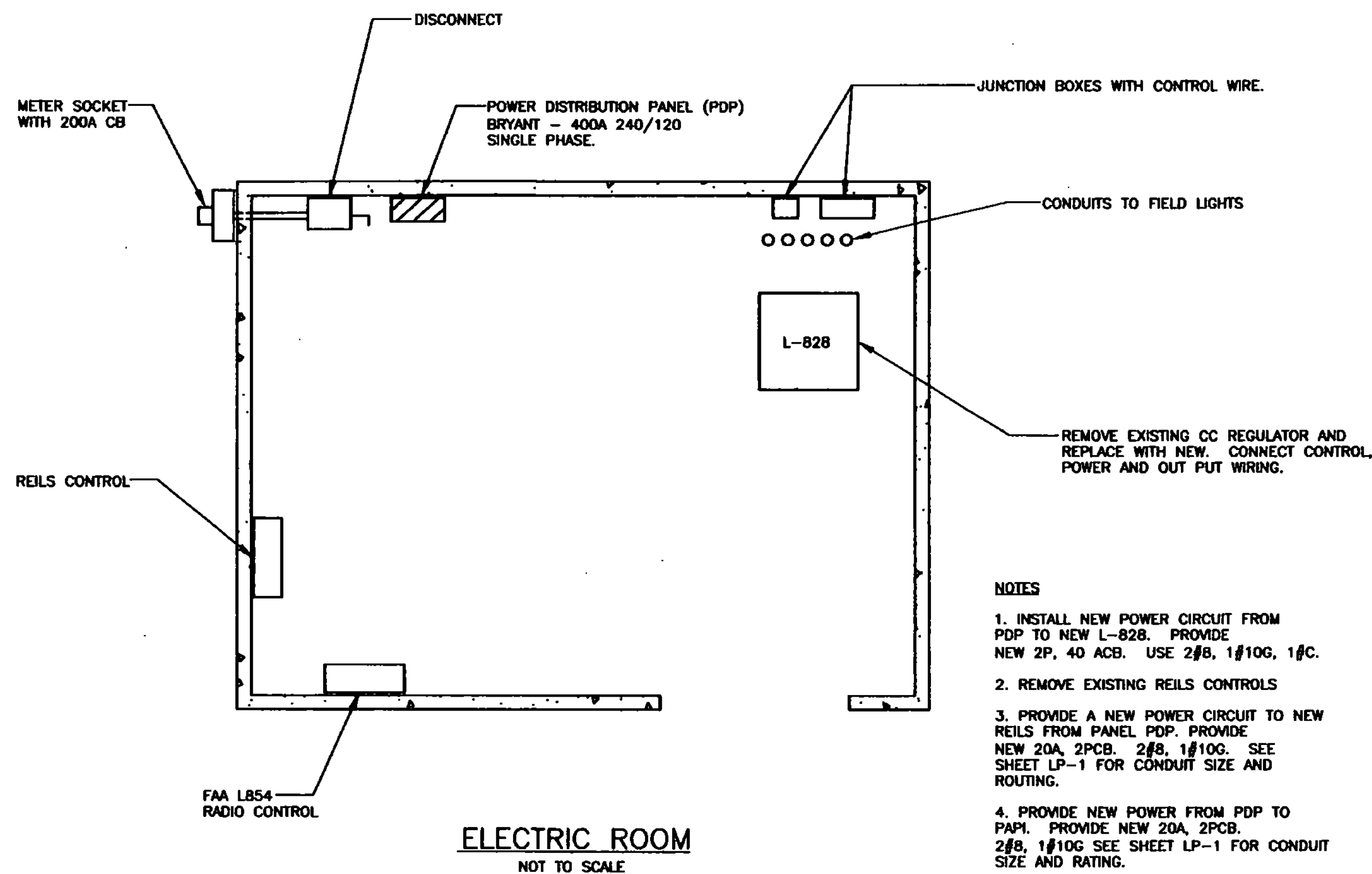
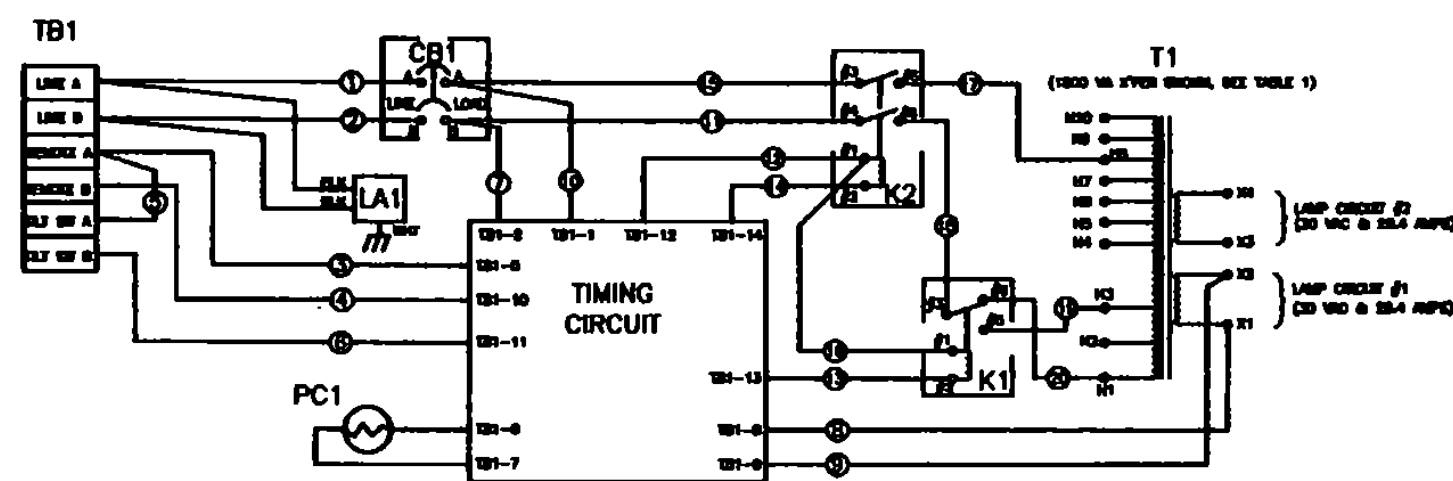
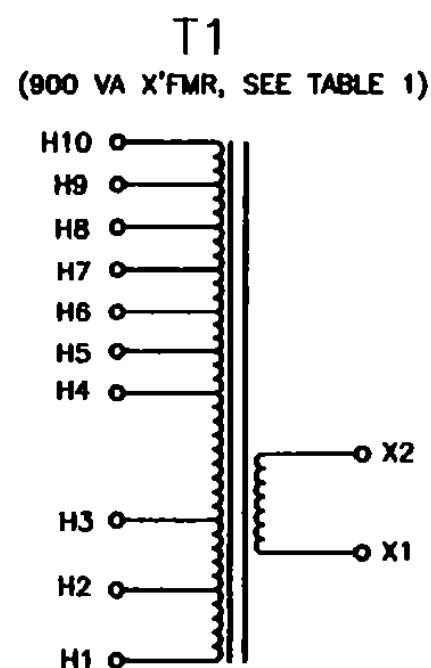


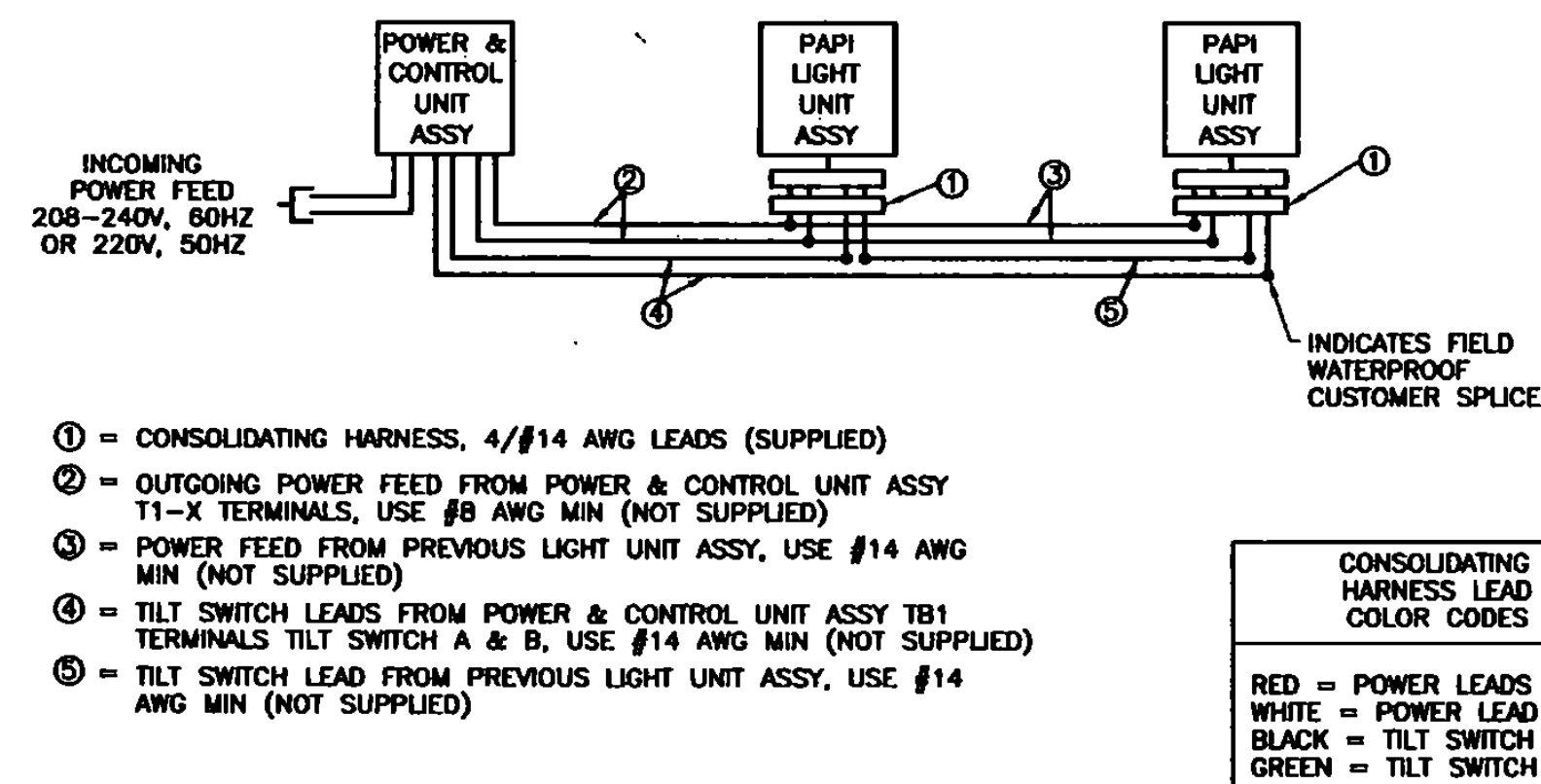
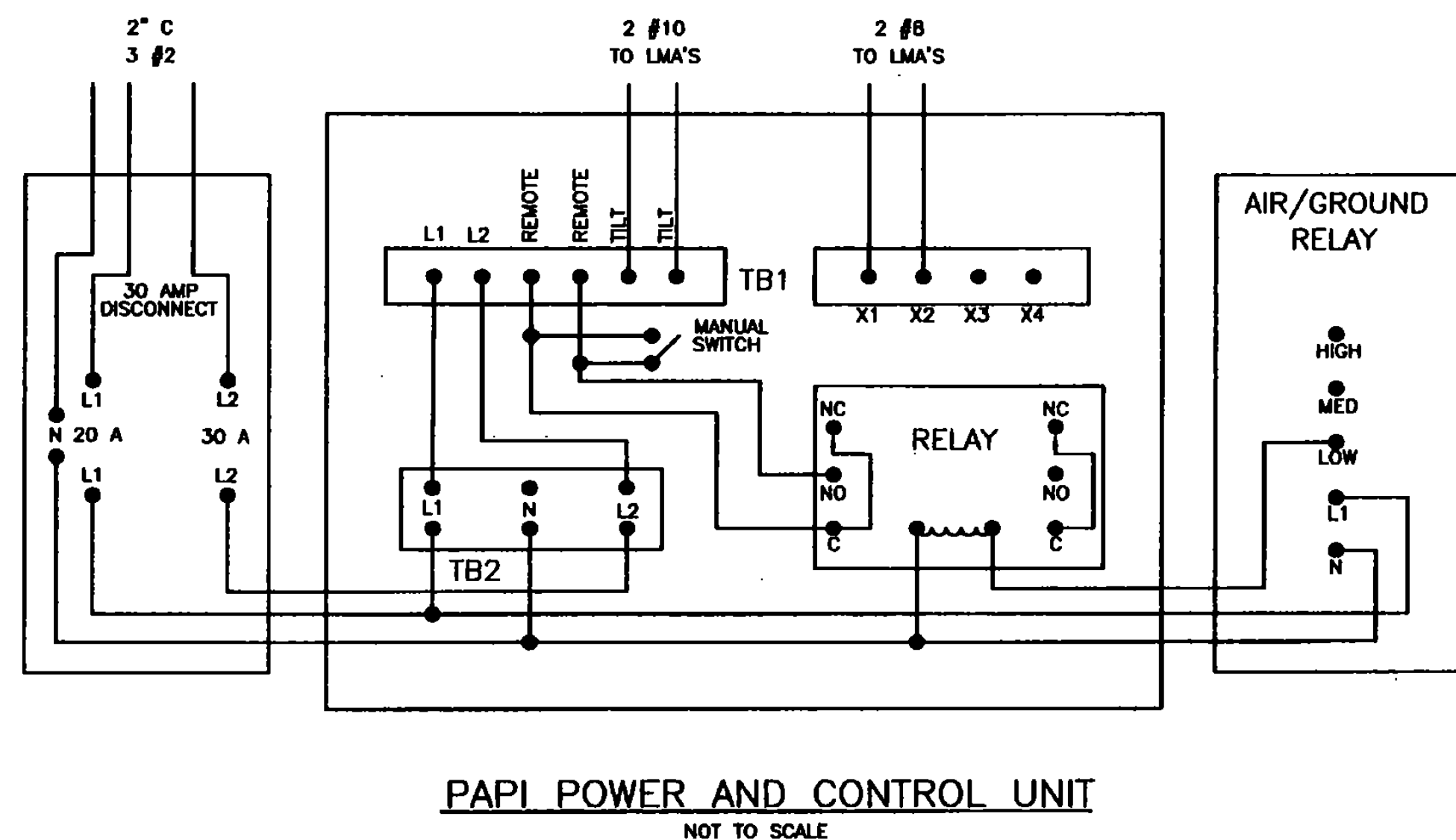
NOTICE: WIRE #17 HAS BEEN FACTORY PRE-SET TO T1-H8 (235-245V) TERMINAL. CHANGE WIRE #17 TERMINATION SUCH THAT THE PAPI LAMP VOLTAGE IS BETWEEN 28.4 AND 31.2 VOLTS.

TABLE 1
(REFERENCE ONLY)

LINE VOLTAGE	CONNECT TO WIRE #17
195-205	H4
205-215	H5
215-225	H6
225-235	H7
235-245	H8
245-255	H9
255-265	H10



- NOTES
1. INSTALL NEW POWER CIRCUIT FROM PDP TO NEW L-828. PROVIDE NEW 2P, 40 ACB. USE 2#8, 1#10G, 1#C.
 2. REMOVE EXISTING REILS CONTROLS
 3. PROVIDE A NEW POWER CIRCUIT TO NEW REILS FROM PANEL PDP. PROVIDE NEW 20A, 2PCB. 2#8, 1#10G. SEE SHEET LP-1 FOR CONDUIT SIZE AND ROUTING.
 4. PROVIDE NEW POWER FROM PDP TO PAPI. PROVIDE NEW 20A, 2PCB. 2#8, 1#10G SEE SHEET LP-1 FOR CONDUIT SIZE AND RATING.
 5. RECONNECT THE AIR TO GROUND RECEIVER L-854 TO THE OPERATING CONTROLS OF THE CONSTANT CURRENT TRANSFORMER L-828 TO MATCH THE EXISTING CONTROL PATTERN. THIS WILL ALLOW FOR THREE LEVELS OF LIGHTING.



NOTE: ON 8812A-2-11 OR -20 PAPI SYSTEMS, NO TILT SWITCH WIRES (4) & (5) ARE REQUIRED. A JUMPER WIRE (#18 AWG MIN) MUST BE ADDED BETWEEN POWER & CONTROL UNIT ASSY TB1 TERMINALS TILT SWITCH A & B FOR UNIT FUNCTION.

L-881 STYLE "A" SYSTEM

NO SCALE
PART NO'S 8812A-1, 8812A-2 & 8812A-2-11 OR -20
PAPI FIELD WIRING CONNECTIONS

I:\N15500\2\dwg\CI\5500P20037.dwg P1: Feb 02 11:52:56 2001

NO.	DATE	REVISIONS	BY	CHKD

DuBois & King
engineering planning management development

VERMONT AGENCY OF TRANSPORTATION
COVENTRY, VERMONT
NEWPORT STATE AIRPORT
RUNWAY 18-36 RECONSTRUCTION
PAPI WIRING/ ELECTRIC ROOM
DIAGRAM AND DETAIL

DESIGN BY JJP	DATE MAR. 2000
CHECKED BY	PROJ. NO. N15500
PROJ. ENG. JAA	DRWN. NO. 1
SHEET PP-4	