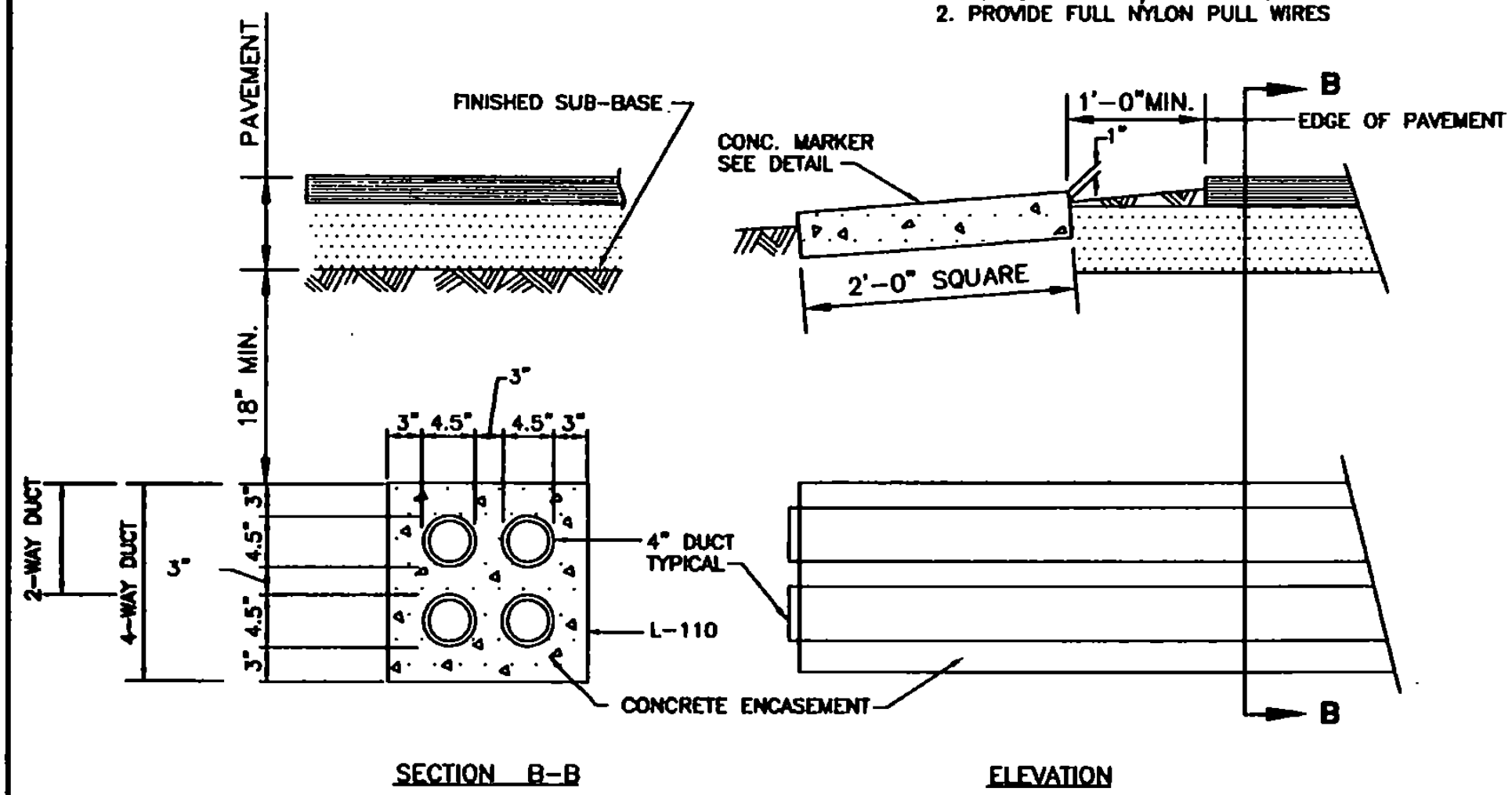
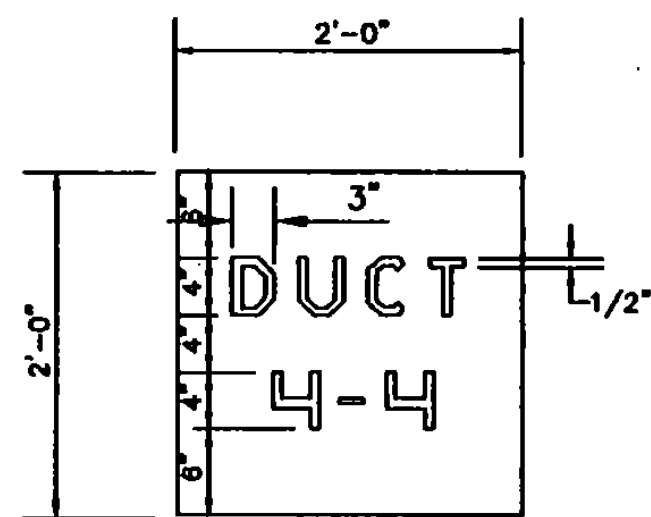


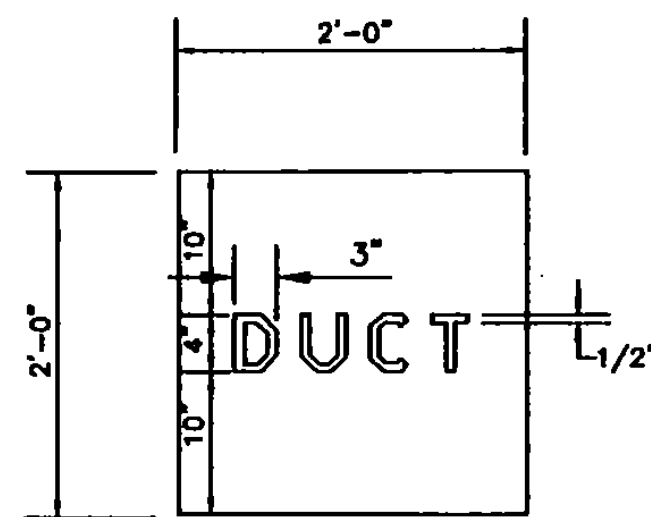
NOTE:  
 1. SLOPE DUCTS 3"/100 FT. FOR DRAINAGE  
 2. PROVIDE FULL NYLON PULL WIRES



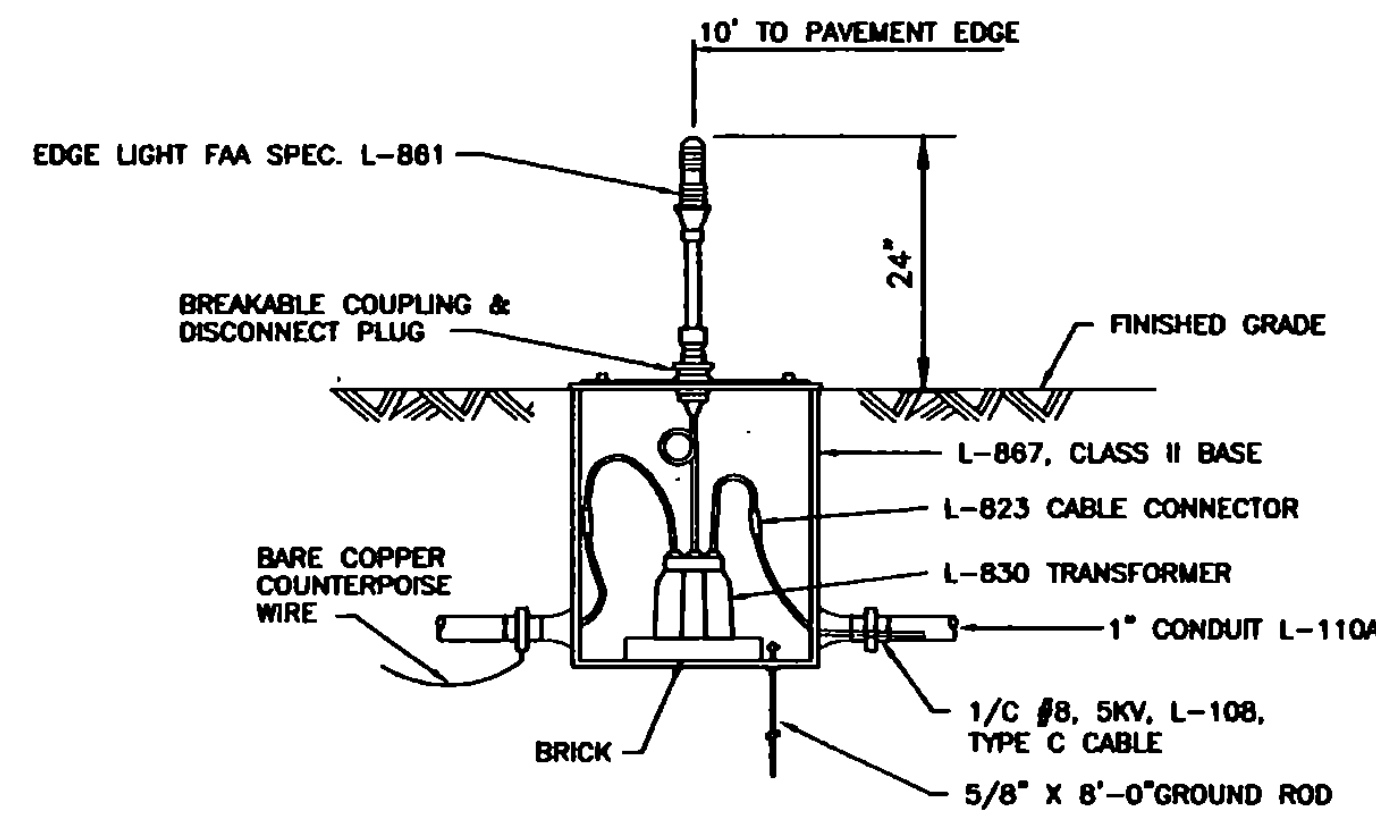
DUCT (4-WAY) AND CONCRETE MARKER DETAILS  
 NOT TO SCALE



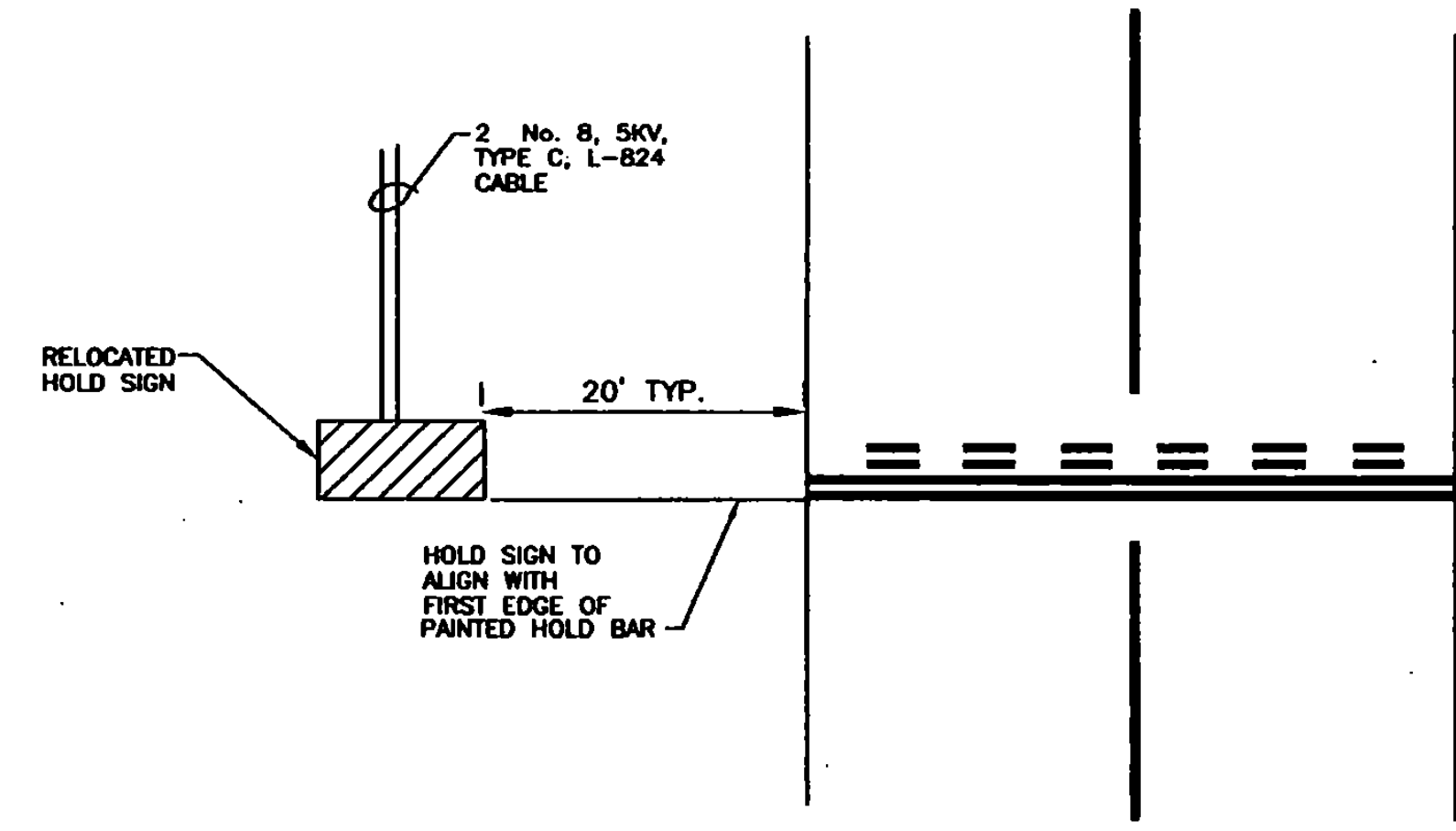
CONCRETE DUCT MARKER  
 NOT TO SCALE



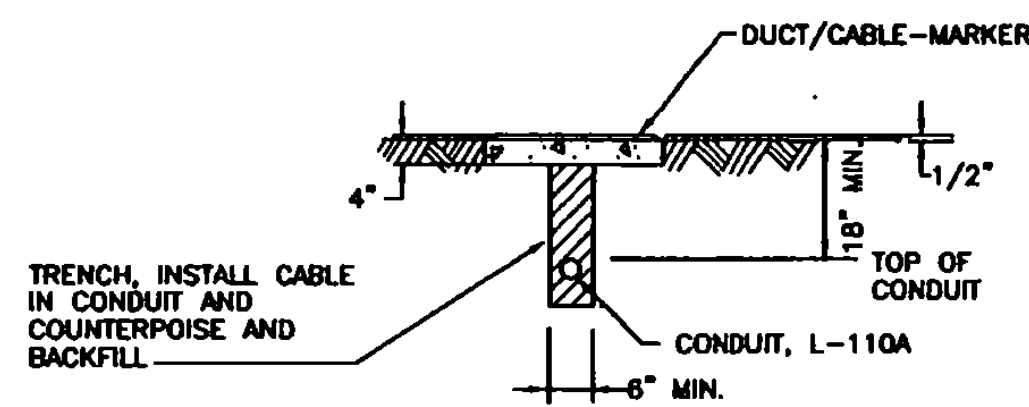
CONCRETE UTILITY DUCT MARKER  
 NOT TO SCALE



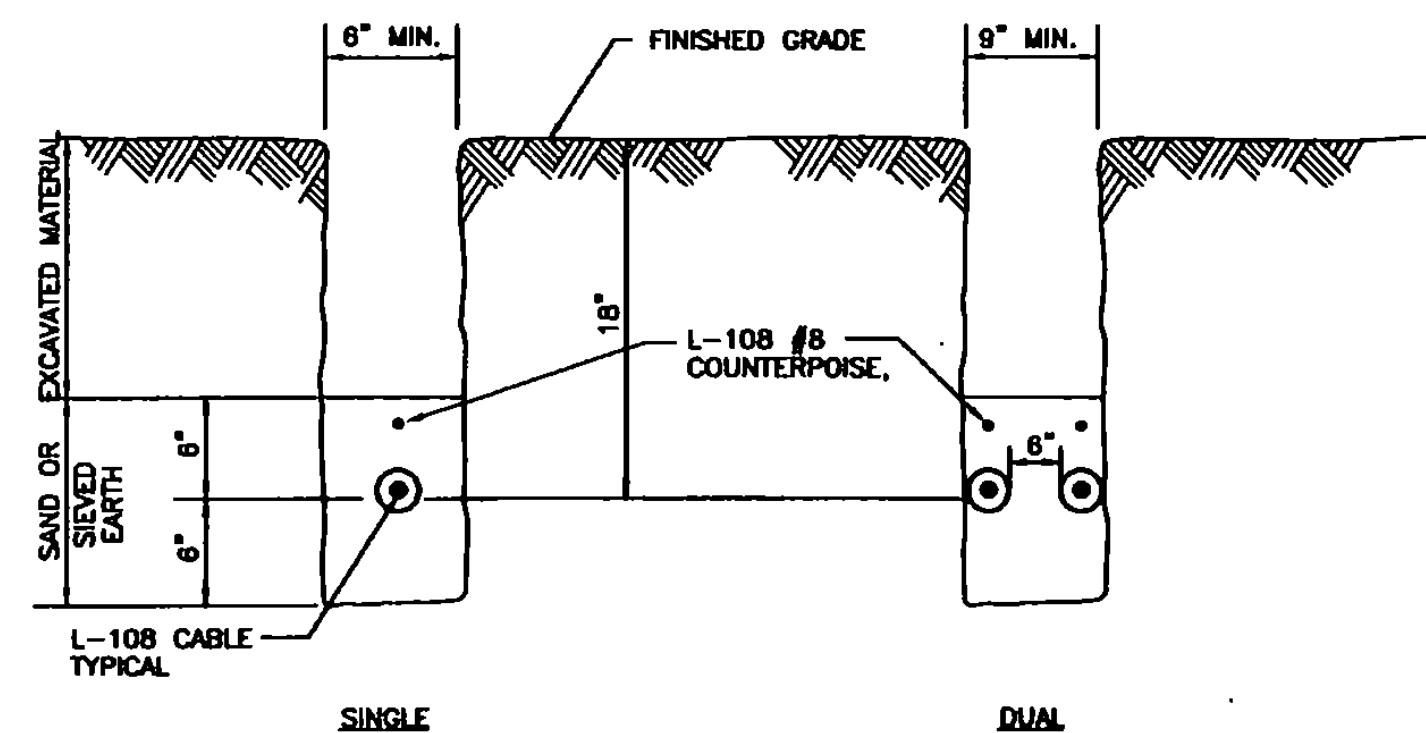
BASE MOUNTED SERIES CIRCUIT  
 NOT TO SCALE



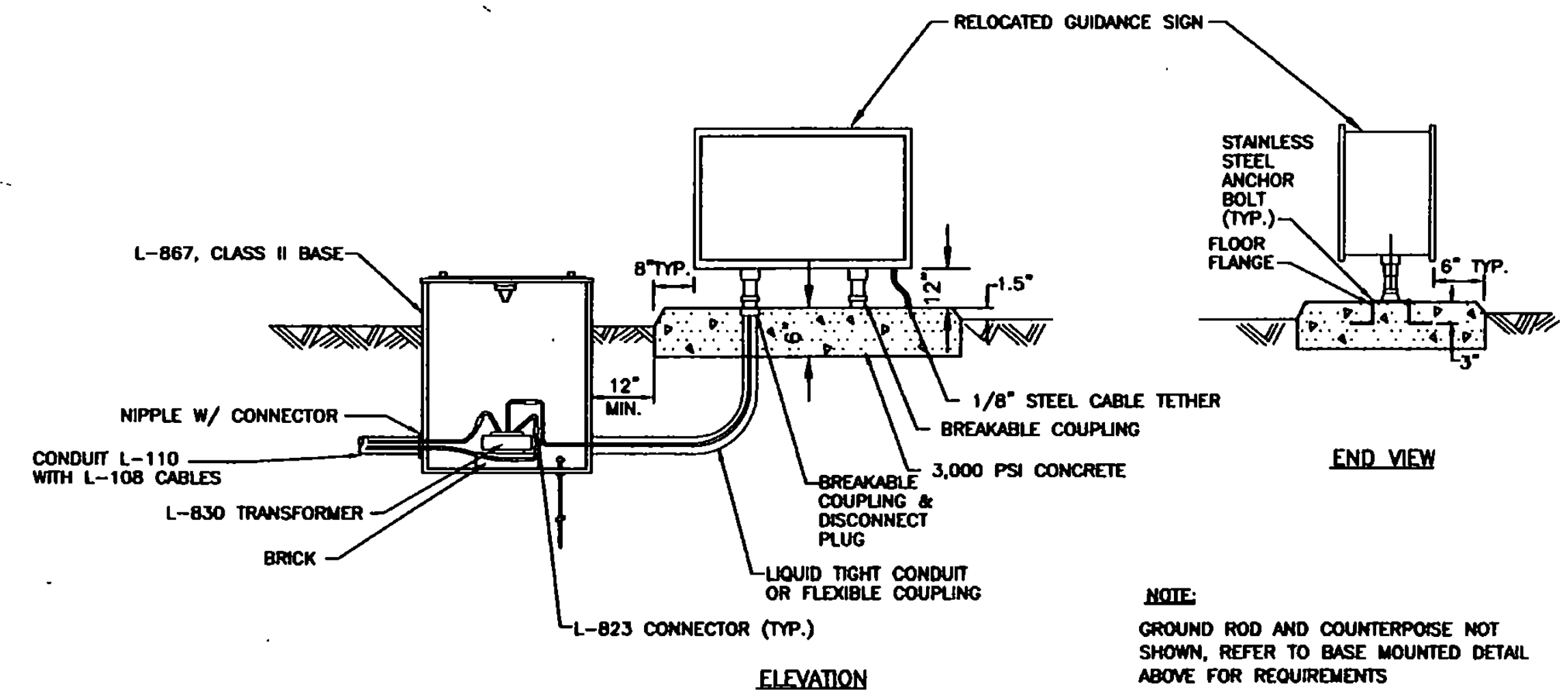
HOLD SIGN LAYOUT DETAIL  
 NOT TO SCALE



CABLE/DUCT-MARKER DETAIL  
 NOT TO SCALE



CABLE/DUCT INSTALLATION DETAILS  
 NOT TO SCALE



GUIDANCE SIGN DETAIL  
 NOT TO SCALE

NOTE:  
 GROUND ROD AND COUNTERPOISE NOT SHOWN, REFER TO BASE MOUNTED DETAIL ABOVE FOR REQUIREMENTS

I:\15500F2\049\15500F20025.dwg F:\1 Feb 02 11:44:19 2001

NO.	DATE	REVISIONS	BY	CHK'D

**DuBois & King**  
 engineering planning management development

VERMONT AGENCY OF  
 TRANSPORTATION  
 COVENTRY, VERMONT  
 NEWPORT STATE AIRPORT  
 RUNWAY 18-36 RECONSTRUCTION  
 RUNWAY AND TAXIWAY  
 ELECTRICAL DETAILS

DRAWN BY JJP	DATE MAR. 2000
CHECKED BY JAA	PROJ. NO. N15500
PREP. ENG. JAA	DRAW. NO. 1

SHEET DE-2