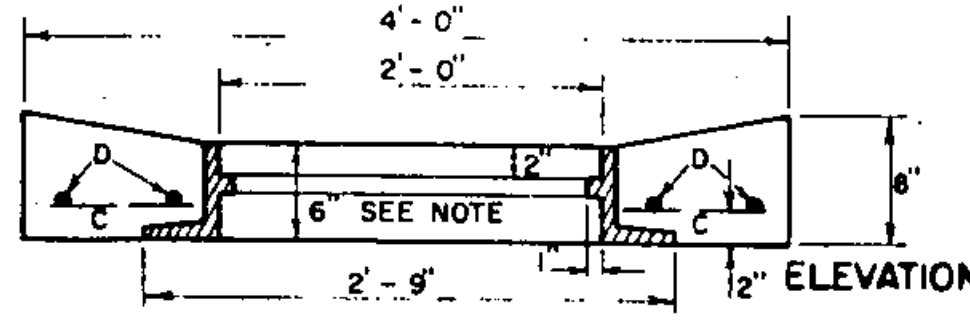


PLAN VIEW



ELEVATION

NOTE - FRAME SHOWN IS FOR TYPE A GRATE, SEE SHEET D-11. FOR TYPE B GRATE AND FRAME, SEE SHEET D-16 (EXCEPT THE FRAME DEPTH DIMENSION SHALL BE 6").

TOP FOR REINFORCED CONCRETE DROP INLET WITH GRATE FOR USE IN DITCHES

STEEL SCHEDULE																																
4x4 DROP INLET TYPE A						4x6 DROP INLET WITH TWO GRATES TYPE B						TYPE C						4x6 DROP INLET WITH ONE GRATE WITH 4x6 TOP														
12", 15", 18", 24"						30", 36"						30", 36"						30", 36"														
DEPTH	G	LENGTH	H	J	LENGTH	C	D	LENGTH	G	LENGTH	H	J	LENGTH	C	D	LENGTH	DEPTH	G	LENGTH	H	J	LENGTH	C	D	LENGTH	DEPTH						
3'-0"	15	2'-3"	22	3'-8"	8	3'-8"											3'-0"															
3'-6"	15	2'-9"	22	3'-8"	8	3'-8"											3'-6"															
4'-0"	15	3'-3"	29	3'-8"	8	3'-8"	17	3'-3"	19	3'-8"	10	5'-8"	4	3'-8"			4'-0"	4	5'-8"	4	3'-8"	17	3'-8"	19	3'-8"	10	5'-8"	6	3'-8"	4	5'-8"	4'-0"
4'-6"	15	3'-9"	29	3'-8"	8	3'-8"	17	3'-9"	19	3'-8"	10	5'-8"	4	3'-8"			4'-6"	4	5'-8"	4	3'-8"	17	4'-2"	19	3'-8"	10	5'-8"	6	3'-8"	4	5'-8"	4'-6"
5'-0"	15	4'-3"	35	3'-8"	8	3'-8"	17	4'-3"	23	3'-8"	13	5'-8"	4	3'-8"			5'-0"	4	5'-8"	5'-0"	17	4'-8"	23	3'-8"	13	5'-8"	6	3'-8"	4	5'-8"	5'-0"	
5'-6"	15	4'-9"	35	3'-8"	8	3'-8"	17	4'-9"	23	3'-8"	13	5'-8"	4	3'-8"			5'-6"	4	5'-8"	5'-6"	17	5'-2"	23	3'-8"	13	5'-8"	6	3'-8"	4	5'-8"	5'-6"	
6'-0"	15	5'-3"	41	3'-8"	8	3'-8"	17	5'-3"	27	3'-8"	15	5'-8"	4	3'-8"			6'-0"	4	5'-8"	6'-0"	17	5'-8"	27	3'-8"	15	5'-8"	6	3'-8"	4	5'-8"	6'-0"	
6'-6"	15	5'-9"	41	3'-8"	8	3'-8"	17	5'-9"	27	3'-8"	15	5'-8"	4	3'-8"			6'-6"	4	5'-8"	6'-6"	17	6'-2"	31	3'-8"	15	5'-8"	6	3'-8"	4	5'-8"	6'-6"	
7'-0"	15	6'-3"	47	3'-8"	8	3'-8"	17	6'-3"	31	3'-8"	15	5'-8"	4	3'-8"			7'-0"	4	5'-8"	7'-0"	17	6'-8"	35	3'-8"	17	5'-8"	6	3'-8"	4	5'-8"	7'-0"	
7'-6"	15	6'-9"	47	3'-8"	8	3'-8"	17	6'-9"	31	3'-8"	15	5'-8"	4	3'-8"			7'-6"	4	5'-8"	7'-6"	17	6'-8"	35	3'-8"	17	5'-8"	6	3'-8"	4	5'-8"	7'-6"	
8'-0"	15	7'-3"	53	3'-8"	8	3'-8"	17	7'-3"	39	3'-8"	19	5'-8"	4	3'-8"			8'-0"	4	5'-8"	8'-0"	17	7'-8"	39	3'-8"	19	5'-8"	6	3'-8"	4	5'-8"	8'-0"	

STEEL AND CONCRETE QUANTITIES																																
4x4 DROP INLET						4x6 DROP INLET WITH TWO GRATES						4x6 DROP INLET WITH ONE GRATE WITH 4x6 TOP						STEEL SCHEDULE TYPE D														
12", 15", 18", 24"						30"						36"						4x6 DROP INLET WITH ONE GRATE WITH 4x4 TOP														
DEPTH	CONCRETE C.Y.	STEEL LBS.	CONCRETE C.Y.	STEEL LBS.	CONCRETE C.Y.	STEEL LBS.	DEPTH	CONCRETE C.Y.	STEEL LBS.	CONCRETE C.Y.	STEEL LBS.	DEPTH	G	LENGTH	H	J	LENGTH	C	LENGTH	D	LENGTH	DEPTH	G	LENGTH	H	J	LENGTH	C	LENGTH	D	LENGTH	DEPTH
3'-0"	1.7	150					3'-0"						17	3'-7"	23	3'-8"	13	5'-8"	12	3'-8"	4	3'-8"	5'-0"									
3'-6"	1.9	158					3'-6"						17	4'-1"	23	3'-8"	13	5'-8"	12	3'-8"	4	3'-8"	5'-6"									
4'-0"	2.1	193	2.7	228			4'-0"	2.8	244				17	4'-7"	27	3'-8"	15	5'-8"	12	3'-8"	4	3'-8"	6'-0"									
4'-6"	2.3	200	3.0	237	2.9	237	4'-6"	3.1	252	3.0	252	4'-6"	17	5'-1"	31	3'-8"	15	5'-8"	12	3'-8"	4	3'-8"	6'-6"									
5'-0"	2.6	231	3.3	279	3.2	279	5'-0"	3.4	294	3.3	294	5'-0"	17	5'-7"	35	3'-8"	17	5'-8"	12	3'-8"	4	3'-8"	7'-0"									
5'-6"	2.8	239	3.6	288	3.5	288	5'-6"	3.7	303	3.6	303	5'-6"	17	6'-1"	39	3'-8"	19	5'-8"	12	3'-8"	4	3'-8"	7'-6"									
6'-0"	3.0	270	3.9	324	3.8	324	6'-0"	4.0	339	3.9	339	6'-0"	17	6'-7"	39	3'-8"	19	5'-8"	12	3'-8"	4	3'-8"	8'-0"									
6'-6"	3.2	278	4.2	348	4.1	348	6'-6"	4.3	363	4.2	363	6'-6"	17	7'-1"	35	3'-8"	17	5'-8"	12	3'-8"	4	3'-8"	8'-0"									
7'-0"	3.5	308	4.5	384	4.4	384	7'-0"	4.6	399	4.5	399	7'-0"	17	7'-7"	39	3'-8"	19	5'-8"	12	3'-8"	4	3'-8"	8'-0"									
7'-6"	3.7	316	4.8	393	4.7	393	7'-6"	4.9	408	4.8	408	7'-6"	17	8'-1"	39	3'-8"	19	5'-8"	12	3'-8"	4	3'-8"	8'-0"									
8'-0"	3.9	347	5.1	429	5.0	429	8'-0"	5.2	444	5.1	444	8'-0"	17	8'-7"	39	3'-8"	19	5'-8"	12	3'-8"	4	3'-8"	8'-0"									

FOR 2nd 30" PIPE DEDUCT 0.18 CY. FOR 2nd 36" PIPE DEDUCT 0.26 CY. FOR 2nd 42" PIPE DEDUCT 0.36 CY. OR 0.18 FOR 2nd 48" PIPE DEDUCT 0.47 CY. OR 0.24 FOR 1 PIPE FOR 1 PIPE

ALL REINFORCING STEEL TO BE NO. 5 DEFORMED BARS, EVENLY SPACED WITH A MAXIMUM SPACING OF 12" C/C.

ALL STEEL TO HAVE 2 INCH MIN. COVER.

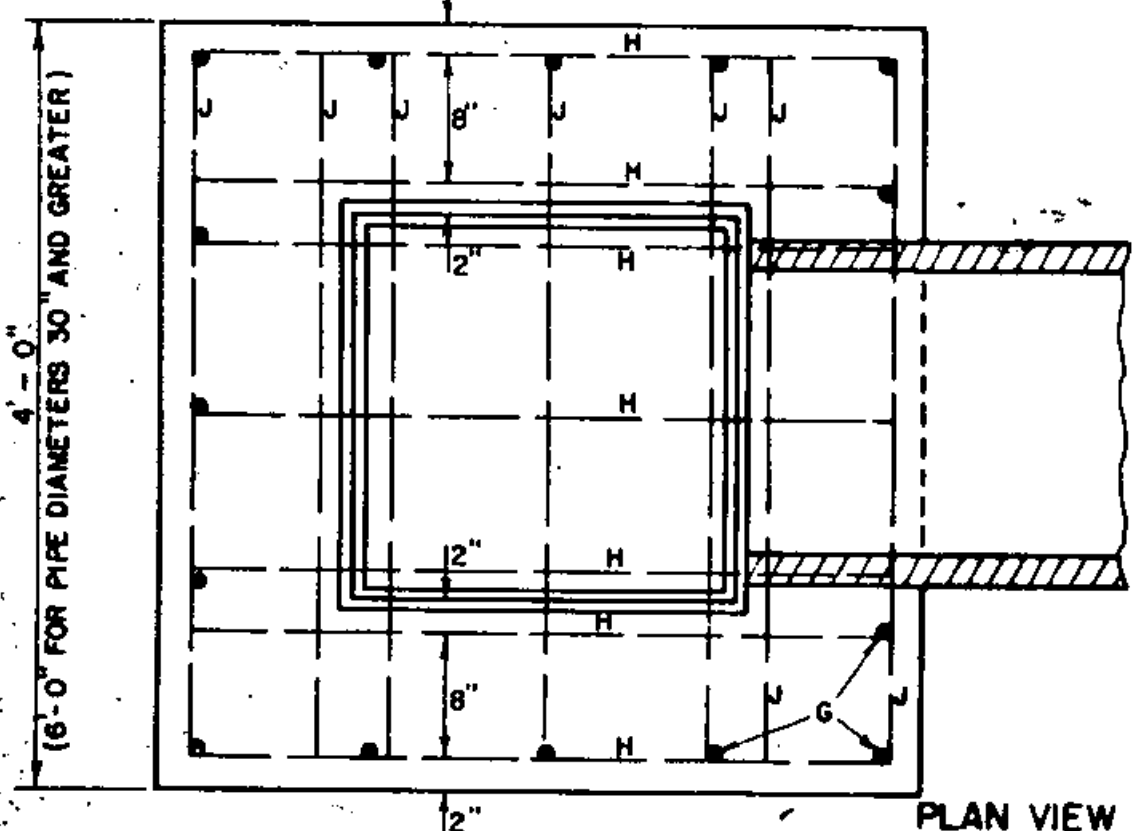
DROP INLET TO BE CONSTRUCTED IN ACCORDANCE WITH STRUCTURAL CONCRETE, SECTION 501.

GRATES TO CONFORM TO DROP INLETS, CATCH BASINS, AND MANHOLES, SECTION 604.

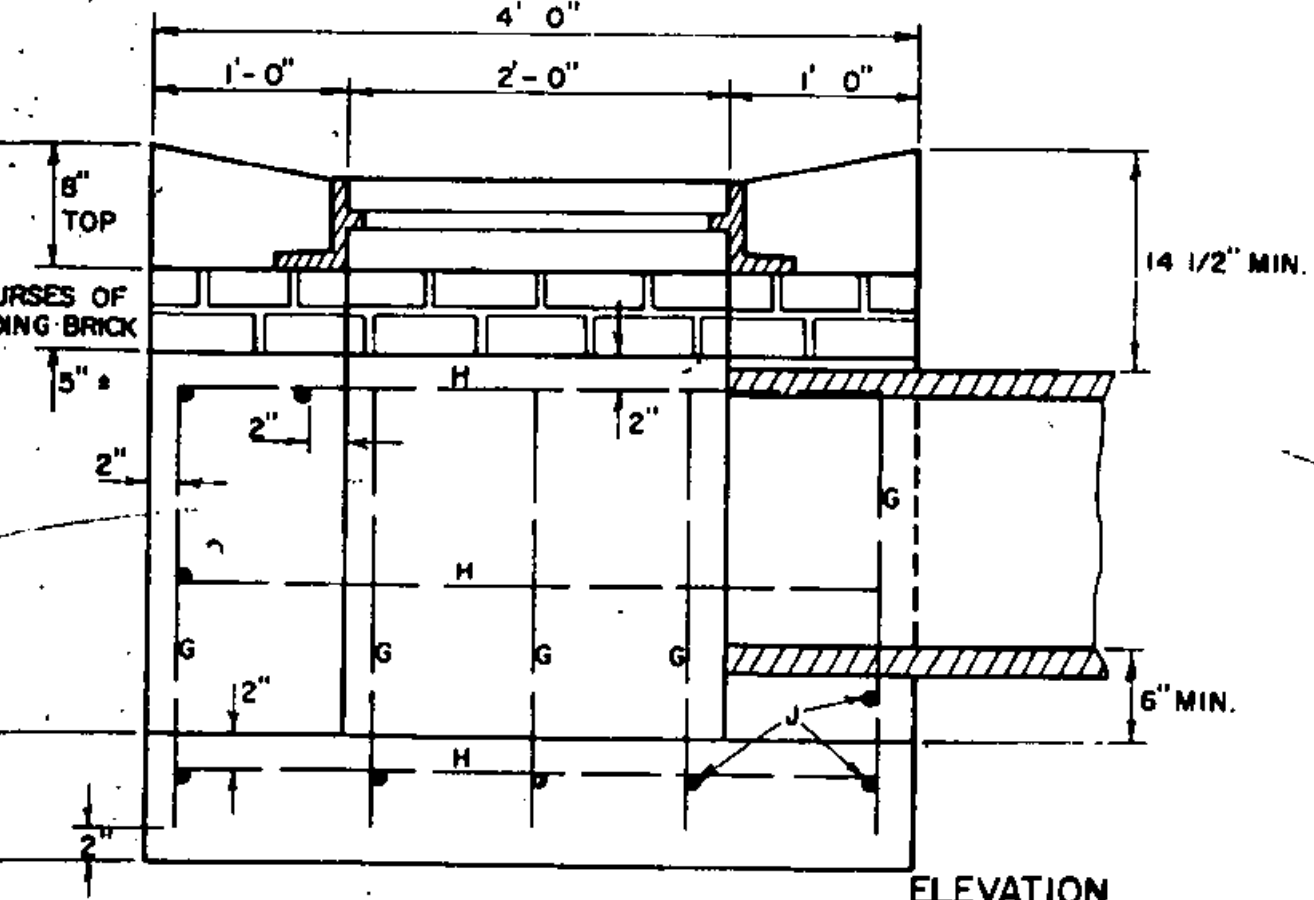
FURNISHING AND LAYING OF BRICKS FOR ADJUSTING ELEVATION OF GRATE SHALL BE INCLUDED IN UNIT BID PRICE FOR CONCRETE, CLASS B, PAY ITEM 501.25, AND THEIR VOLUME TO BE INCLUDED IN THE FINAL QUANTITIES.

MORTAR, TYPE II, TO BE USED AS JOINT FILLER AND LAYING OF BRICK.

FOR PIPES OF 30" OR MORE IN DIAMETER, ALLOWANCE SHALL BE MADE FOR THE OPENING IN COMPUTING CONCRETE VOLUMES. THIS DEDUCTION WILL BE BASED ON THE RATED DIAMETER OF THE PIPE USED, WITH THE SAME DEDUCTION FOR CONCRETE AND METAL PIPE. ABOVE TABLES INDICATE DEDUCTION FOR ONE PIPE.

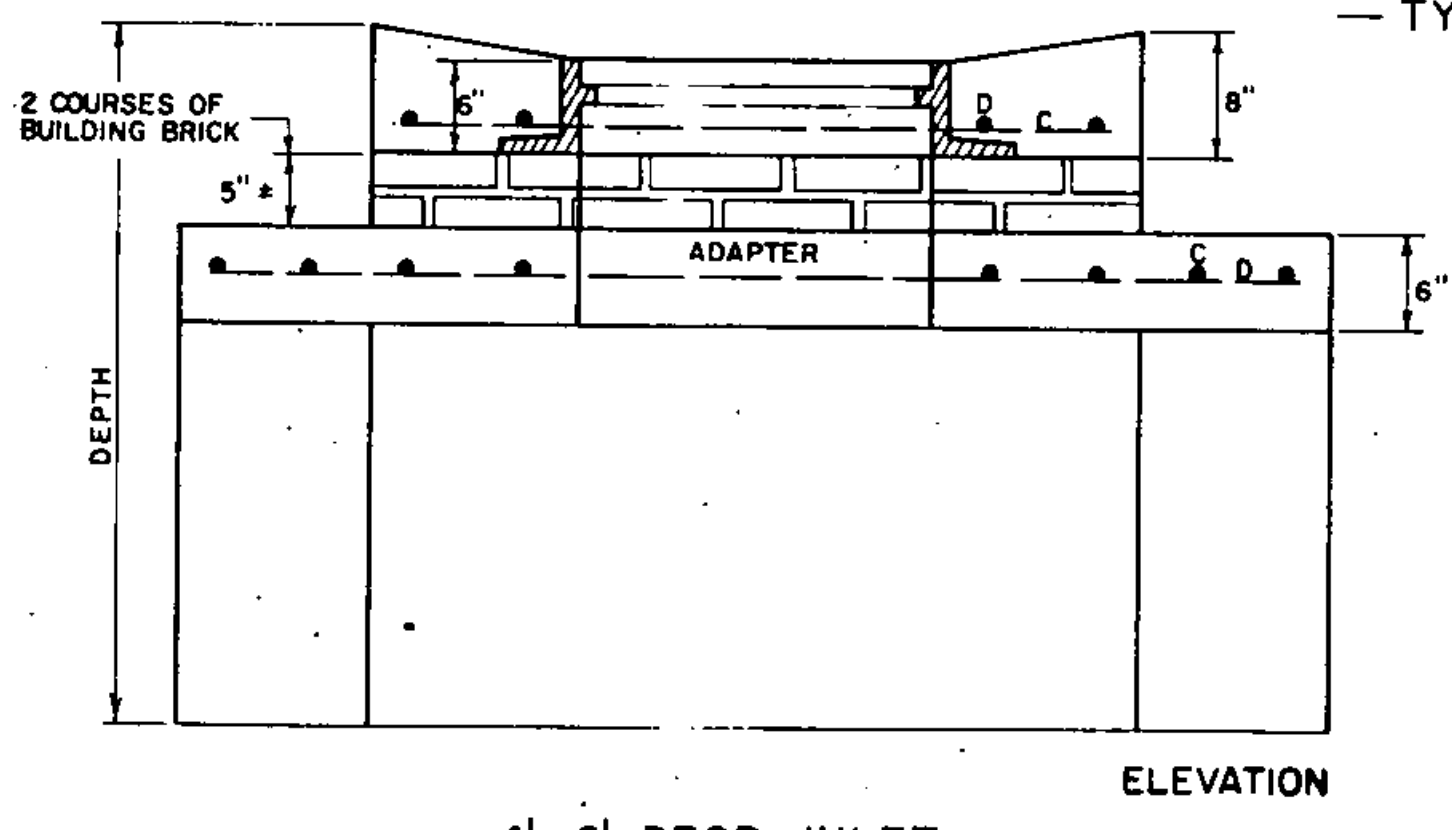


PLAN VIEW



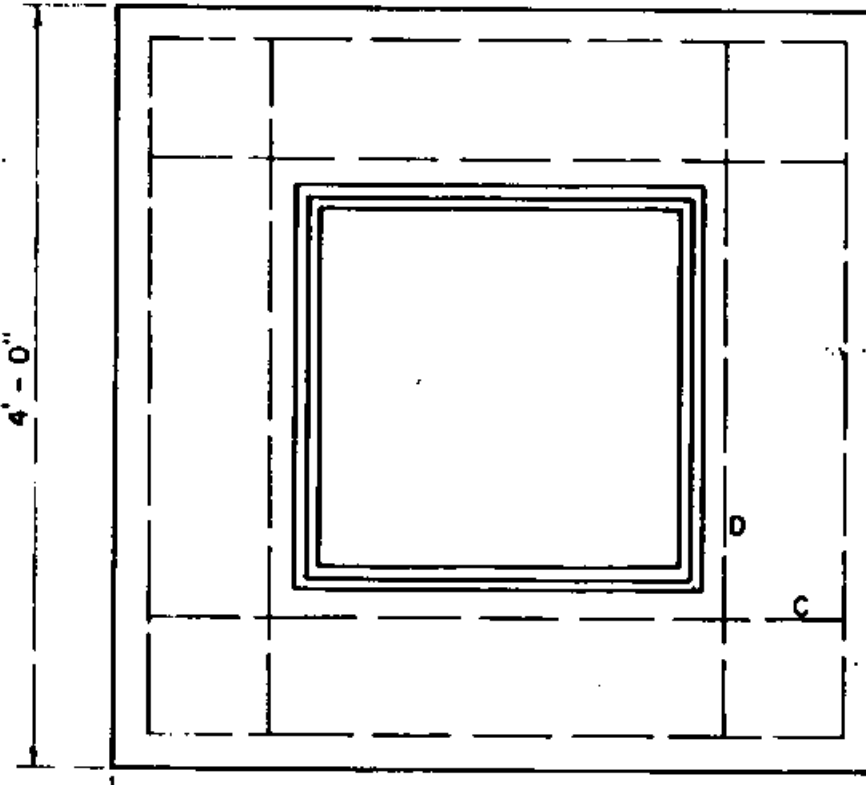
ELEVATION

REINFORCED CONCRETE DROP INLET FOR USE IN DITCHES

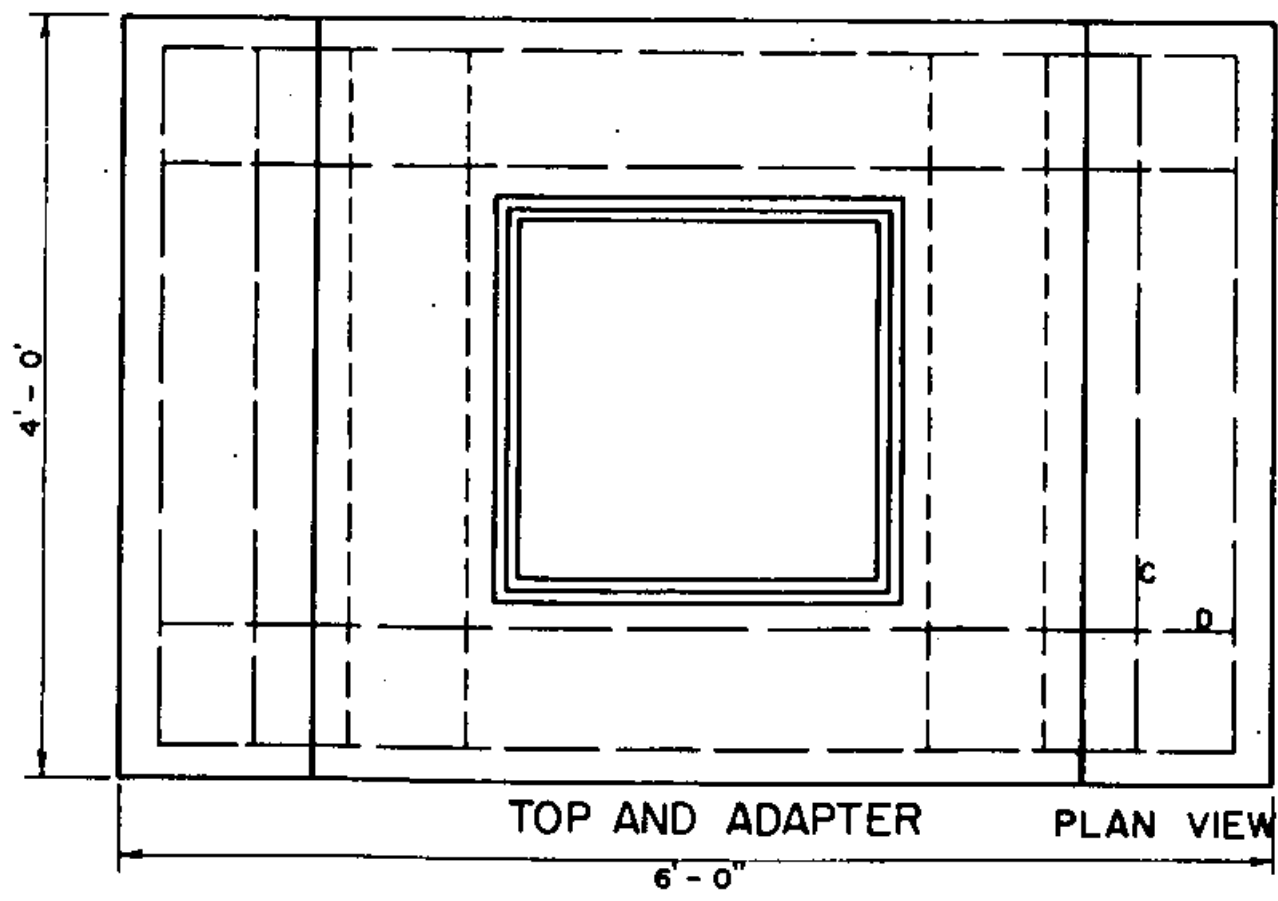


ELEVATION

4x6 DROP INLET WITH 4x4 TOP TOP WITH ONE CAST IRON GRATE

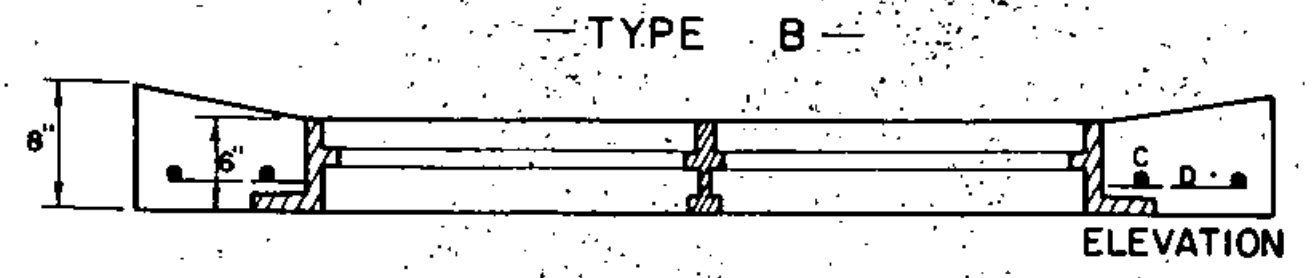


TOP PLAN VIEW

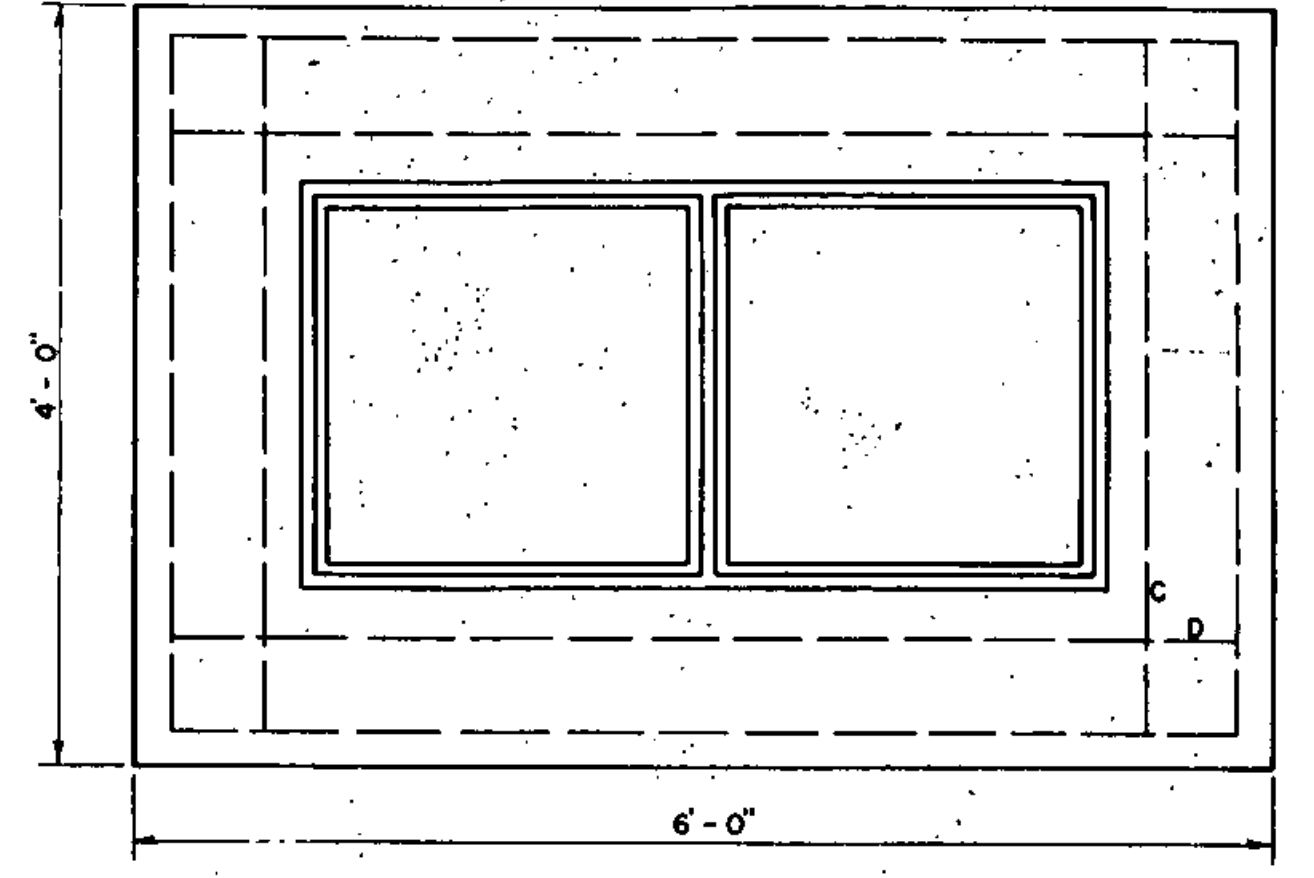


TOP AND ADAPTER PLAN VIEW

STEEL AND CONCRETE QUANTITIES				
4x6 DROP INLET WITH ONE GRATE WITH 4x4 TOP TYPE D				
30"				
DEPTH	CONCRETE C.Y.	STEEL LBS.	CONCRETE C.Y.	STEEL LBS.
5'-0"	3.2	313	3.1	313
5'-6"	3.5	322	3.4	322
6'-0"	3.8	358	3.7	358
6'-6"	4.1	382	4.0	382
7'-0"	4.4	418	4.3	418
7'-6"	4.7	427	4.6	427
8'-0"	5.0	463	4.9	463

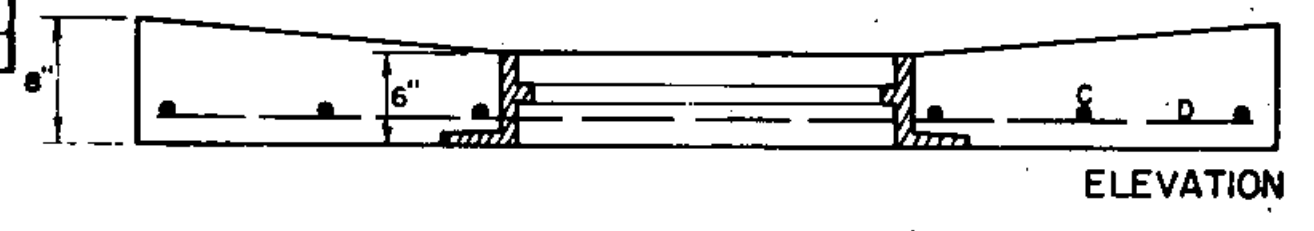


ELEVATION

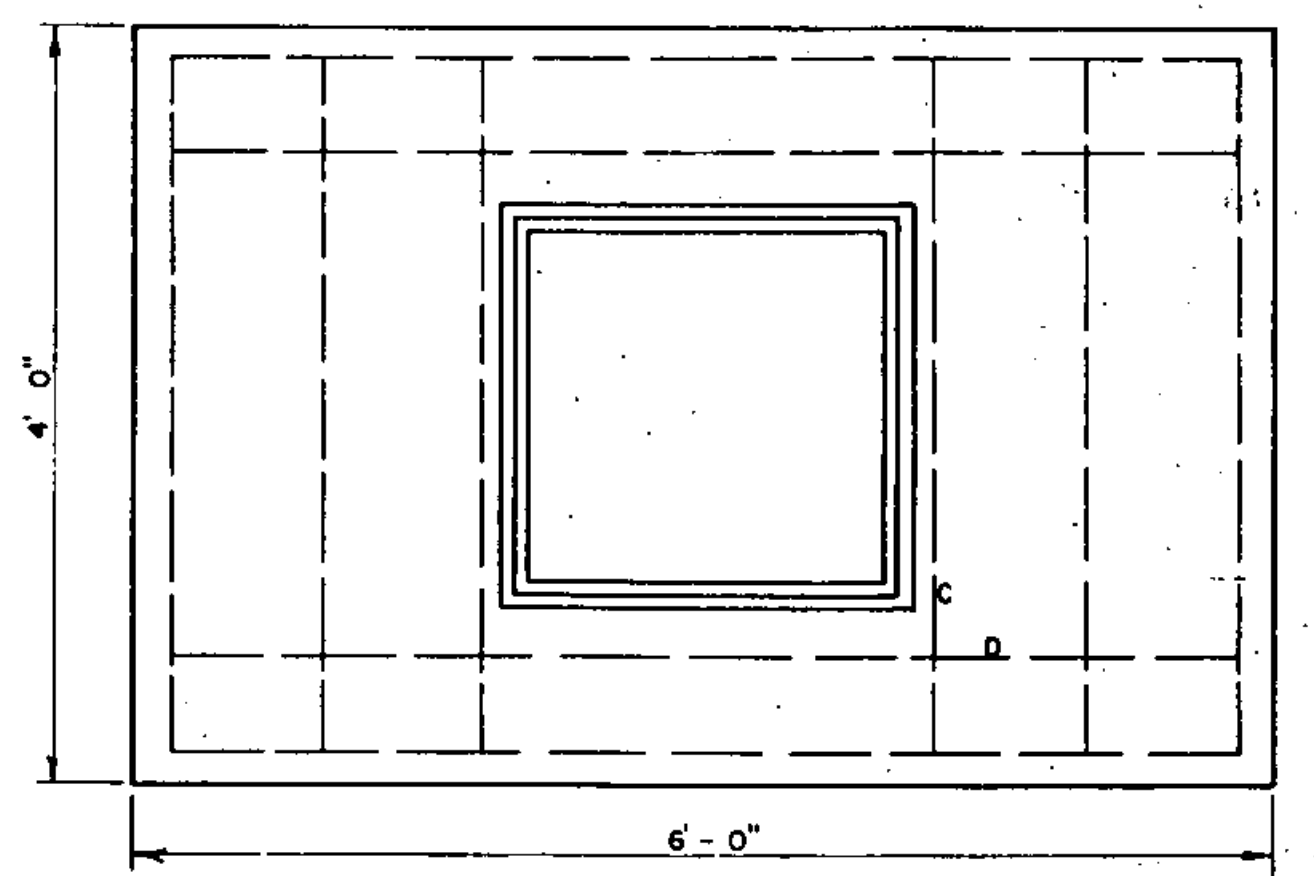


PLAN VIEW

4x6 DROP INLET TOP WITH TWO CAST IRON GRATES



ELEVATION



PLAN VIEW

4x6 DROP INLET TOP WITH ONE CAST IRON GRATE

REVISIONS AND CORRECTIONS
APR. 2, 1973 - ORIGINAL D-6 REDRAWN.

APPROVED
DATE April 4, 1973
R.H. O'Connell
CHIEF ENGINEER
E.H. Steiner
ASST. CHIEF ENGINEER
J.M. Law
HIGHWAY ENGINEER

REINFORCED CONCRETE DROP INLET WITH GRATE FOR USE IN DITCHES



STANDARD D-6