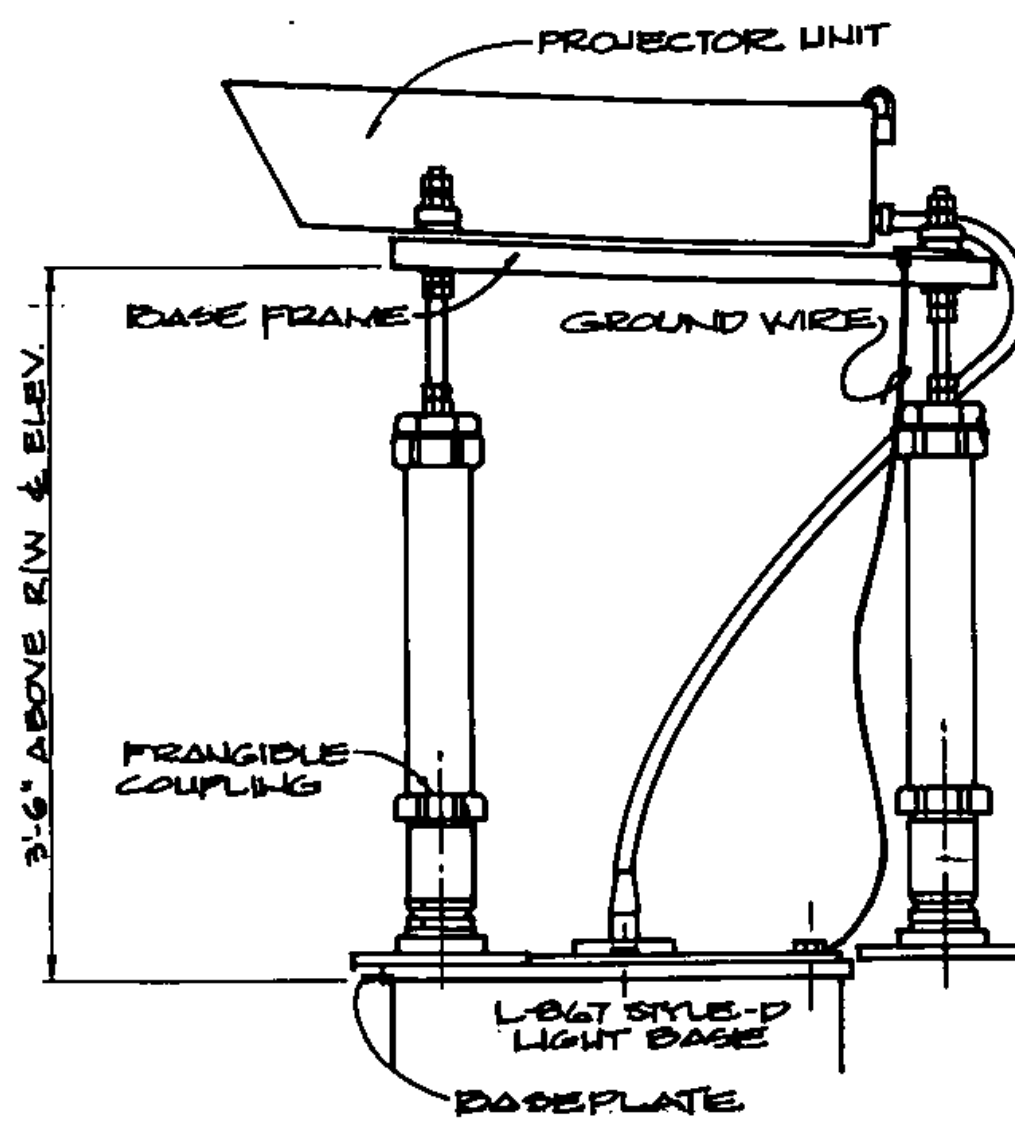


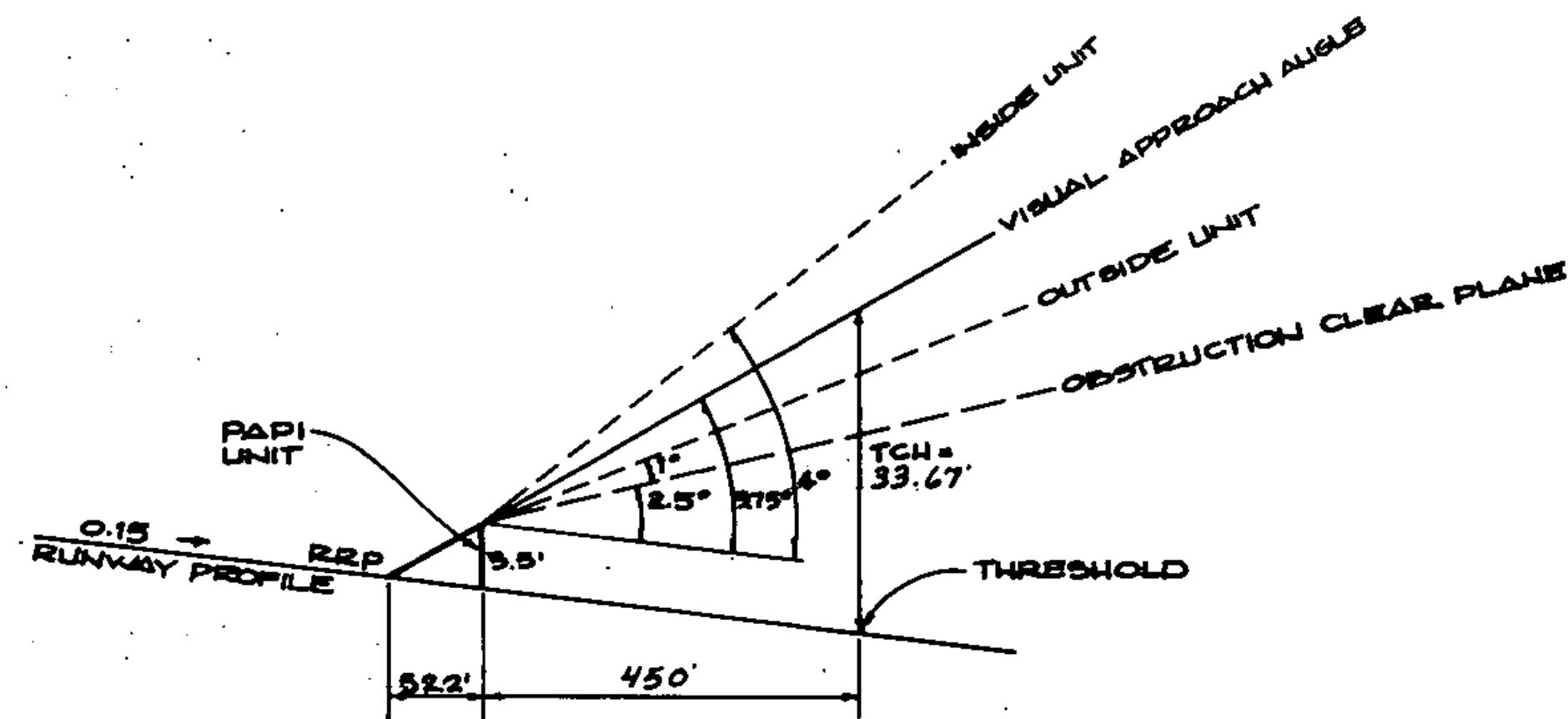
PAPI CAN INSTALLATION
N.T.S.



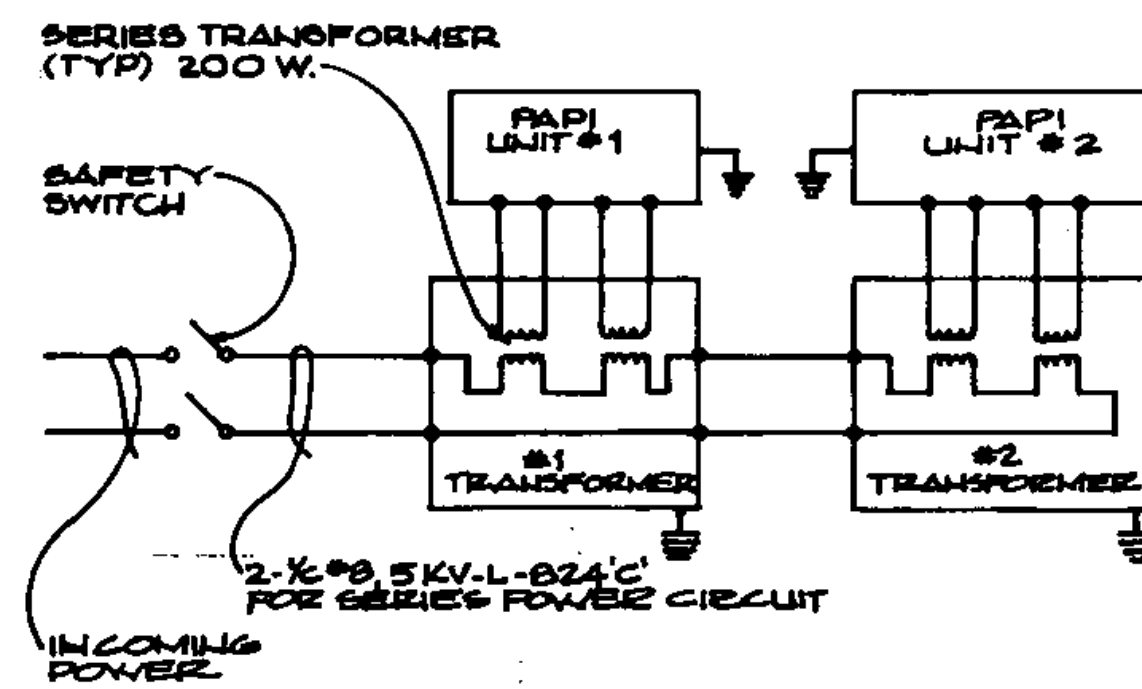
2 WAY PAPI MOUNTING DETAIL
N.T.S.

PAPI NOTES

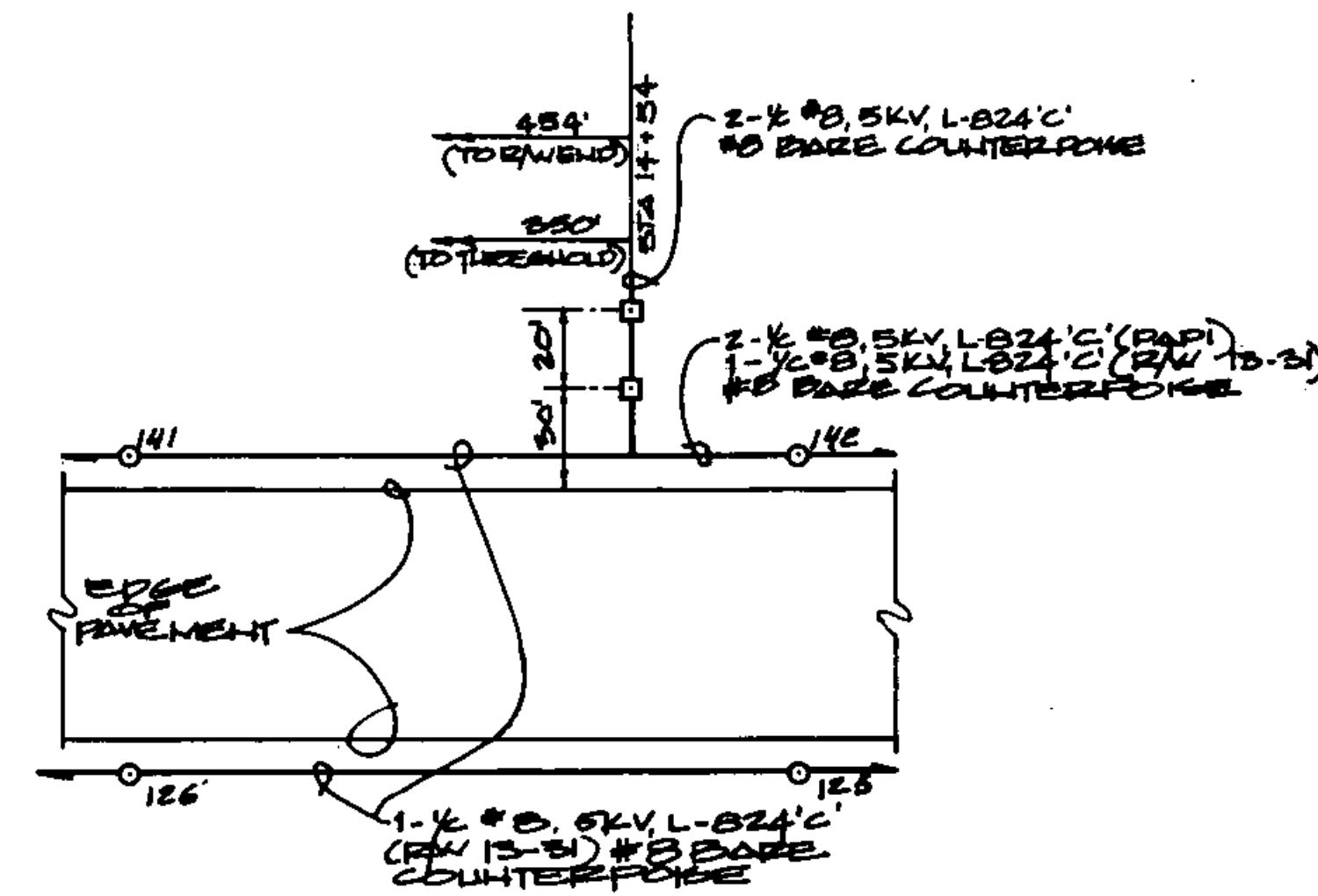
1. CONTRACTOR TO STENCIL THE AIMING ANGLE ON THE PROJECTOR UNITS.
2. PAPI TO CONFORM TO FAA SPEC L-867, STYLE A (VOLTAGE POWERED) CLASS 2 (OPERATION TO -55°C)
3. REFER TO MANUFACTURER'S SPECIFICATIONS FOR DIMENSIONS AND FOUNDATION SPACING



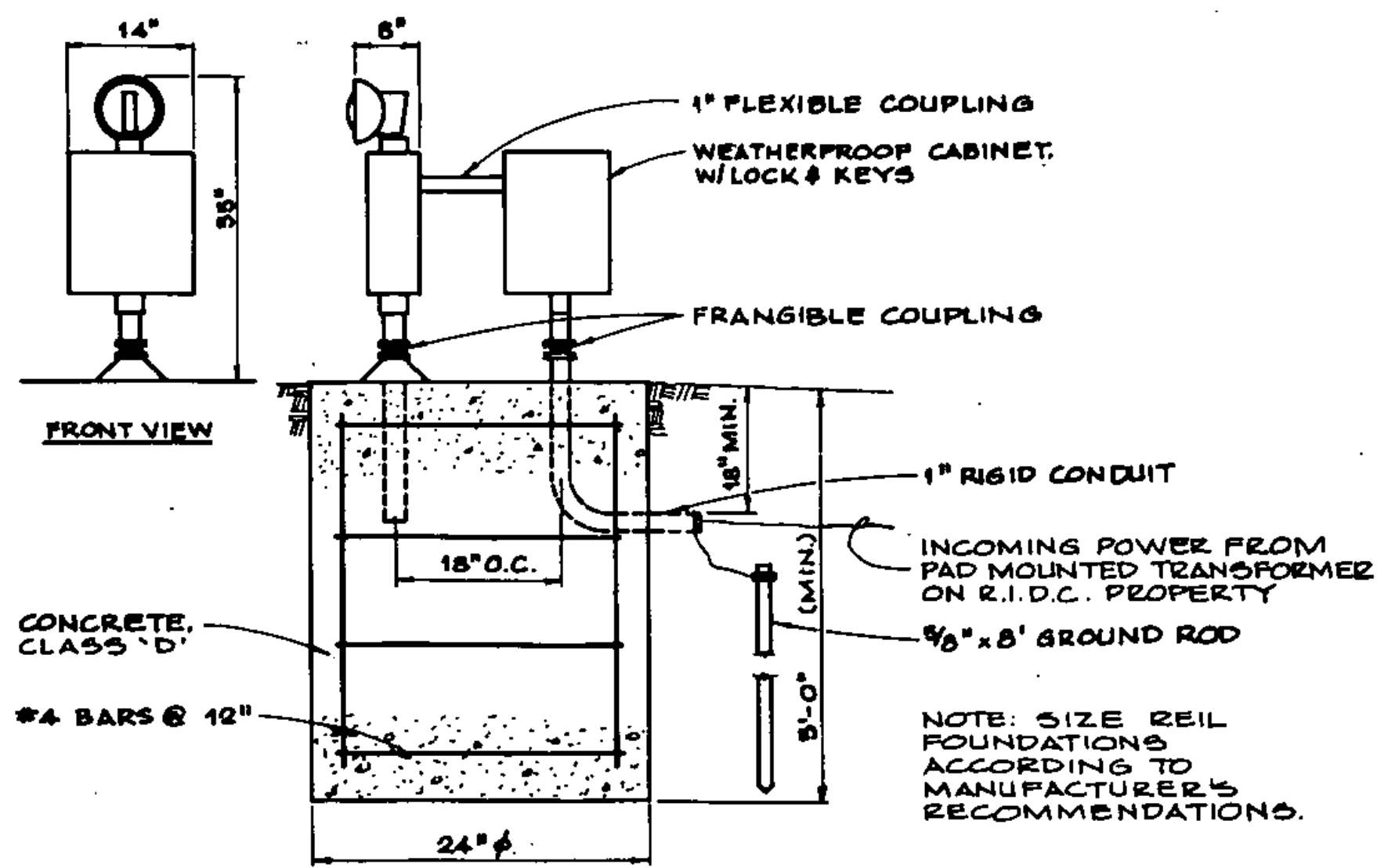
PAPI Aiming Angle
N.T.S.



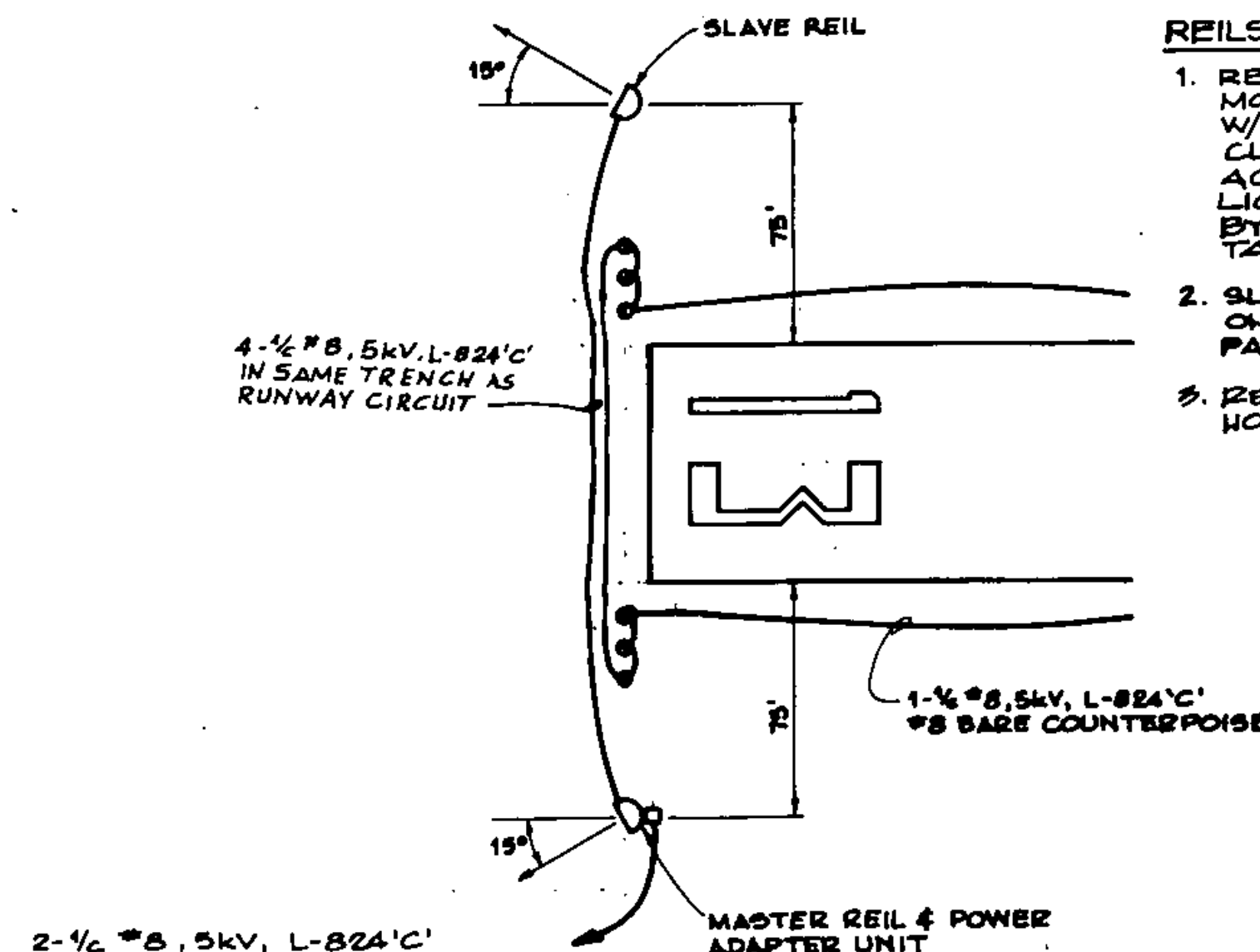
PAPI Wiring Diagram
N.T.S.



PAPI Siting & Wiring Diagram
1" = 50'



MASTER REIL UNIT
N.T.S.



REILS Siting & Wiring Diagram
N.T.S.

REILS NOTES

1. REILS TO BE AMBASSADOR MODEL NO. 68A 20-100 OR EQUAL W/120V, 6.6A POWER ADAPTER & CURRENT SENSING TO BE ACTIVATED OFF RUNWAY LIGHTING CIRCUIT AS MAINT. BY GODFREY ENGINEERING, TAMPA, FL.
2. SLAVE REIL TO BE MOUNTED ON FOUNDATION SIMILAR TO PAPI FOUNDATION SHOWN ABOVE
3. REILS SHALL BE AIMED 15° HORIZONTAL & 10° VERTICAL

2-1/2" #8, 5KV, L-824'C UNDERGROUND TO PAD MOUNTED TRANSFORMER ON R.I.D.C. PROPERTY SEE DETAIL ON SHEET 7 OF 25.

A.I.P. PROJECT NO. 3-50-0015-04

RUTLAND STATE AIRPORT

APPROACH AIDS

CLARENDON, VERMONT

DH Dureans-Henry Inc.

Client No.	80-0182
Proj. Manager	G.W. D'AMICO
Proj. Designer	E.S. DAWES
Drawn By	C.W. MILLS
Checked By	G.W. D'AMICO
Scale	AS SHOWN
Approved	
Date	

STATE OF VERMONT
No. 3873
REGISTERED PROFESSIONAL ENGINEER

Sheet 12 of 30

DELETE VASI, INSERT PAPI	ESD	6-14-88
ADD REILS POWER VIA R.I.D.C.	6WD	7-12-83
Rev.	Description	By Date