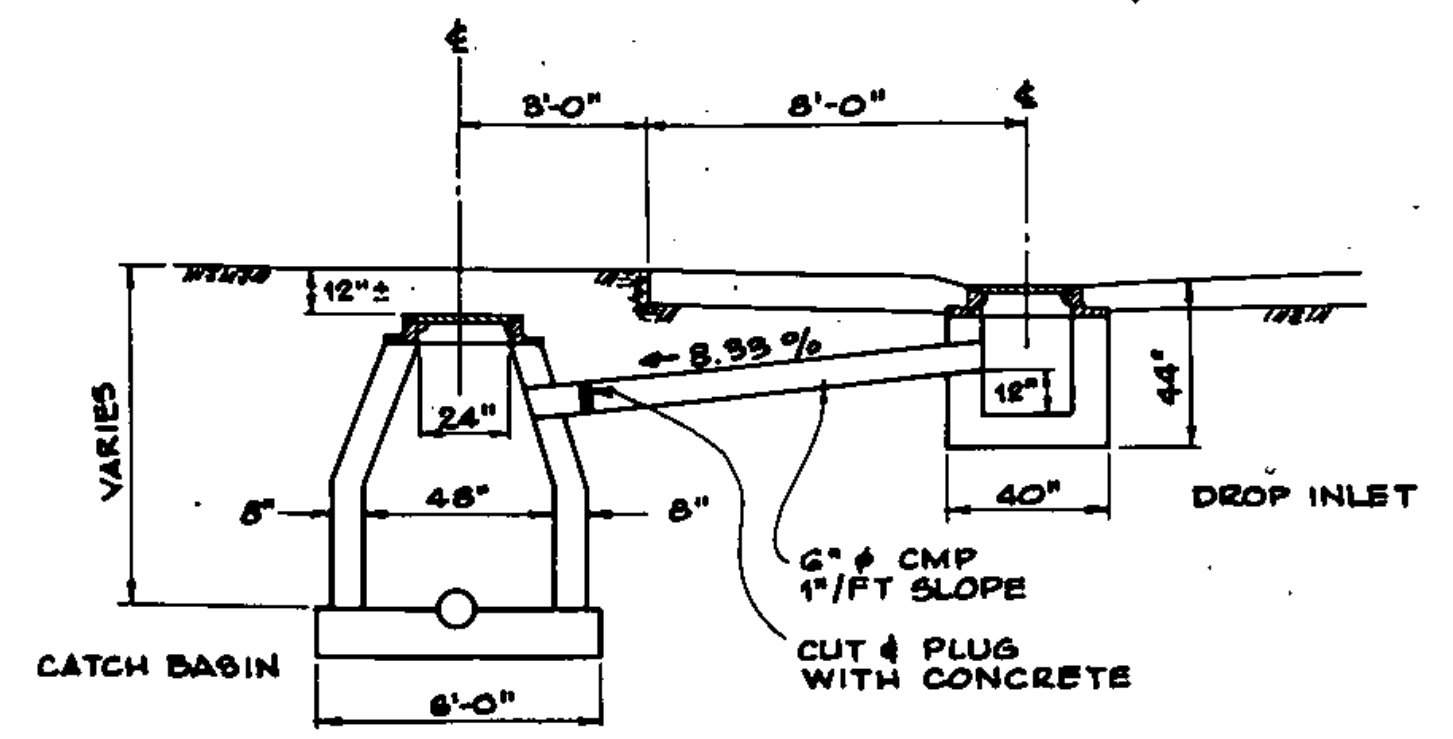
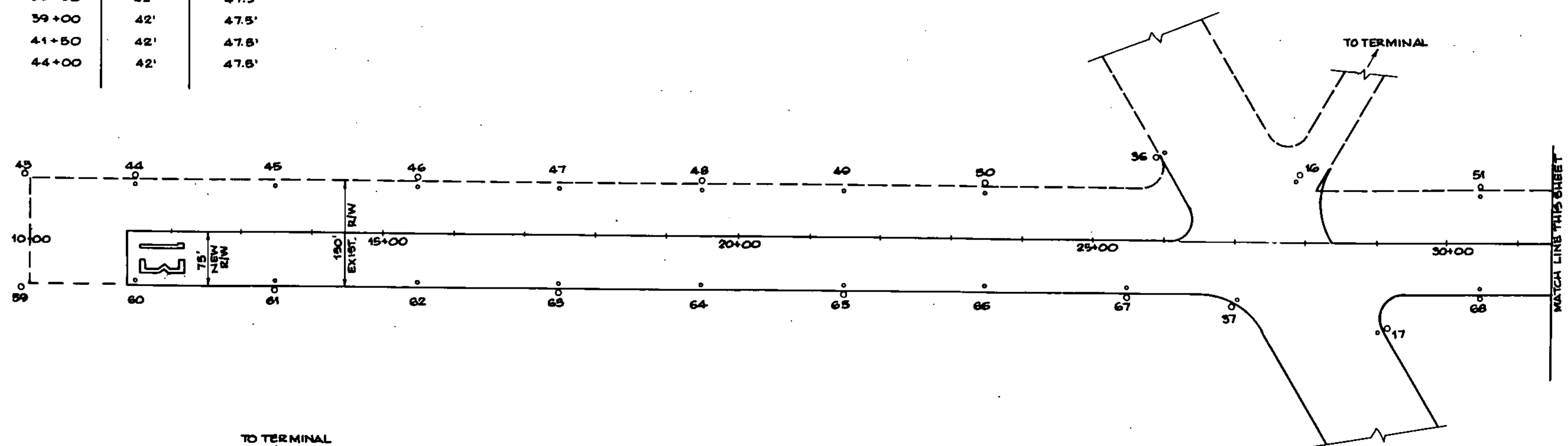


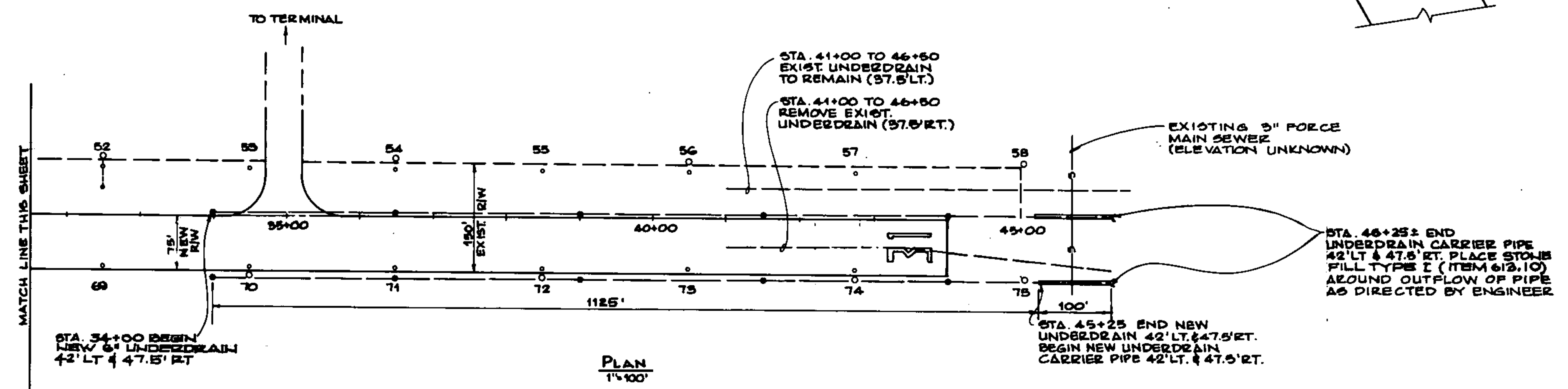
NEW FLUSHING BASIN SCHEDULE

STATION	OFFSET LT.	OFFSET RT.
34+00	42'	47.5'
36+50	42'	47.5'
39+00	42'	47.5'
41+50	42'	47.5'
44+00	42'	47.5'

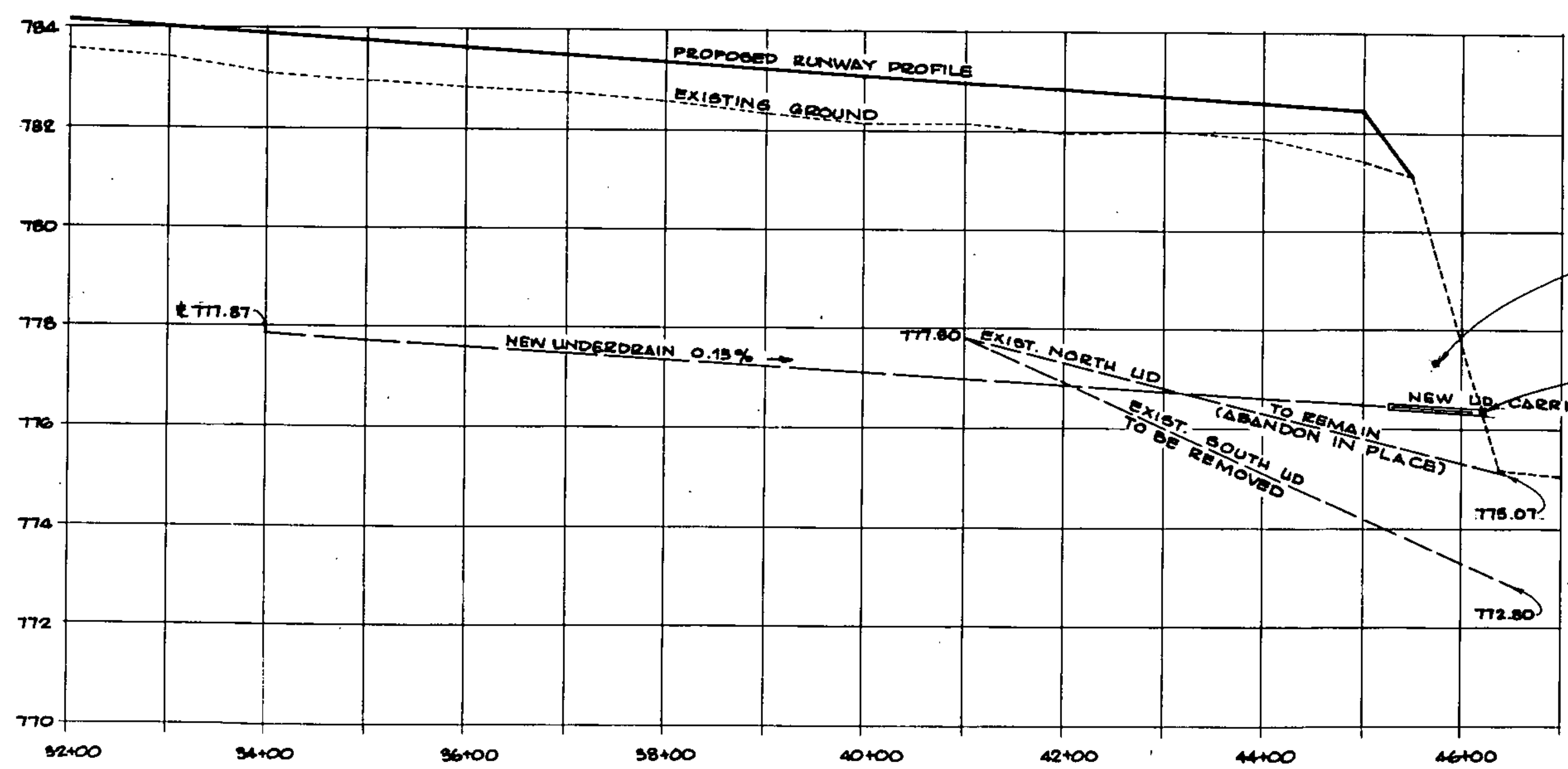


EXIST. CATCH BASIN & DROP INLET DETAIL
N.T.S.

NOTE: IF DROP INLET IS TO BE REMOVED, THE CONTRACTOR WILL CUT AND PLUG THE 6" METAL PIPE AS CLOSE TO THE CATCH BASIN AS POSSIBLE. THE PLUG SHALL BE CONCRETE.



PLAN
1"=100'



PROFILE
HOR. 1"=100'
VER. 1"=2'

- LEGEND**
- EXIST. CATCH BASIN
 - EXIST. DROP INLET
 - EXIST. UNDERDRAIN
 - NEW FLUSHING BASIN
 - NEW DROP INLET
 - NEW UNDERDRAIN
 - NEW UNDERDRAIN CARRIER PIPE



NO.	TYPE	S/L OFFSET	EXISTING I.C. EL.	FINAL I.C. EL.	REMARKS
16	CB	27+98.5, 55' LT	784.22	784.22	To remain
17	DI	29+08.5, 120' RT	783.75	783.75	To remain
36	CB	25+98.5, 120' LT	784.24	784.24	To remain
37	DI	26+98.5, 90' RT	783.81	783.81	To remain
45	CB	9+95, 78' LT	781.02	781.11	Adjust Frame and Grate
44	DI	11+48.5, 78' LT	781.30	781.45	Adjust Frame and Grate
45	DI	13+48.5, 67' LT	781.58	782.28	Remove DI
46	CB	15+48.5, 78' LT	781.85	781.98	Adjust Frame and Grate
47	DI	17+48.5, 67' LT	782.66	783.00	Adjust Frame and Grate
48	DI	19+47.5, 67' LT	783.82	784.06	Adjust Frame and Grate
49	DI	21+48.5, 67' LT	783.82	784.06	Adjust Frame and Grate
50	DI	23+48.5, 78' LT	783.81	783.85	Adjust Frame and Grate
51	DI	30+48.5, 78' LT	783.81	783.85	Adjust Frame and Grate
52	DI	32+48.5, 67' LT	783.20	783.34	Adjust Frame and Grate
53	DI	34+48.5, 67' LT	782.26	782.42	Adjust Frame and Grate
54	DI	36+48.5, 67' LT	781.71	781.88	Adjust Frame and Grate
55	DI	38+48.5, 67' LT	781.71	781.88	Adjust Frame and Grate
56	DI	40+48.5, 67' LT	781.11	781.40	Adjust Frame and Grate
57	DI	42+75.5, 67' LT	781.11	781.40	Adjust Frame and Grate
58	DI	45+02, 78' LT	781.11	781.40	Adjust Frame and Grate
59	CB	9+95, 78' RT	781.02	781.76	Adjust Frame and Grate
60	DI	11+48.5, 67' RT	781.30	781.30	Remove DI
61	CB	13+48.5, 78' RT	781.58	782.28	Adjust Frame and Grate
62	DI	15+48.5, 67' RT	782.13	782.85	Adjust Frame and Grate
63	DI	17+48.5, 67' RT	782.84	783.42	Adjust Frame and Grate
64	DI	19+48.5, 67' RT	782.84	783.42	Adjust Frame and Grate
65	DI	21+48.5, 67' RT	783.72	783.81	Adjust Frame and Grate
66	DI	23+48.5, 67' RT	783.67	783.74	Adjust Frame and Grate
67	DI	25+48.5, 67' RT	782.68	783.22	Adjust Frame and Grate
68	DI	27+48.5, 67' RT	782.68	783.22	Adjust Frame and Grate
69	DI	29+48.5, 67' RT	782.00	782.64	Adjust Frame and Grate
70	DI	31+48.5, 67' RT	782.00	782.64	Adjust Frame and Grate
71	DI	33+48.5, 67' RT	782.00	782.64	Adjust Frame and Grate
72	DI	35+48.5, 67' RT	782.00	782.64	Adjust Frame and Grate
73	DI	37+48.5, 67' RT	782.00	782.64	Adjust Frame and Grate
74	DI	39+48.5, 67' RT	782.00	782.64	Adjust Frame and Grate
75	DI	41+48.5, 67' RT	782.00	782.64	Adjust Frame and Grate

A.L.P. PROJECT NO. 3-50-0018-04

Rev.	Description	By	Date

RUTLAND STATE AIRPORT

DRAINAGE DETAILS

CLARNDON, VERMONT

DH
Dunham & Henry Inc.
1871 Washington Ave.
Poultney, VT 05759

Client No. 80-0182
 Prof. Manager G.W. D'AMICO
 Prof. Designer E.S. DAWES
 Drawn By C.W. MILLS
 Checked By G.W. D'AMICO
 Scale AS SHOWN

STATE OF VERMONT
 No. 3873
 REGISTERED PROFESSIONAL ENGINEER

Approved _____
 Date _____

Sheet 18 of 30