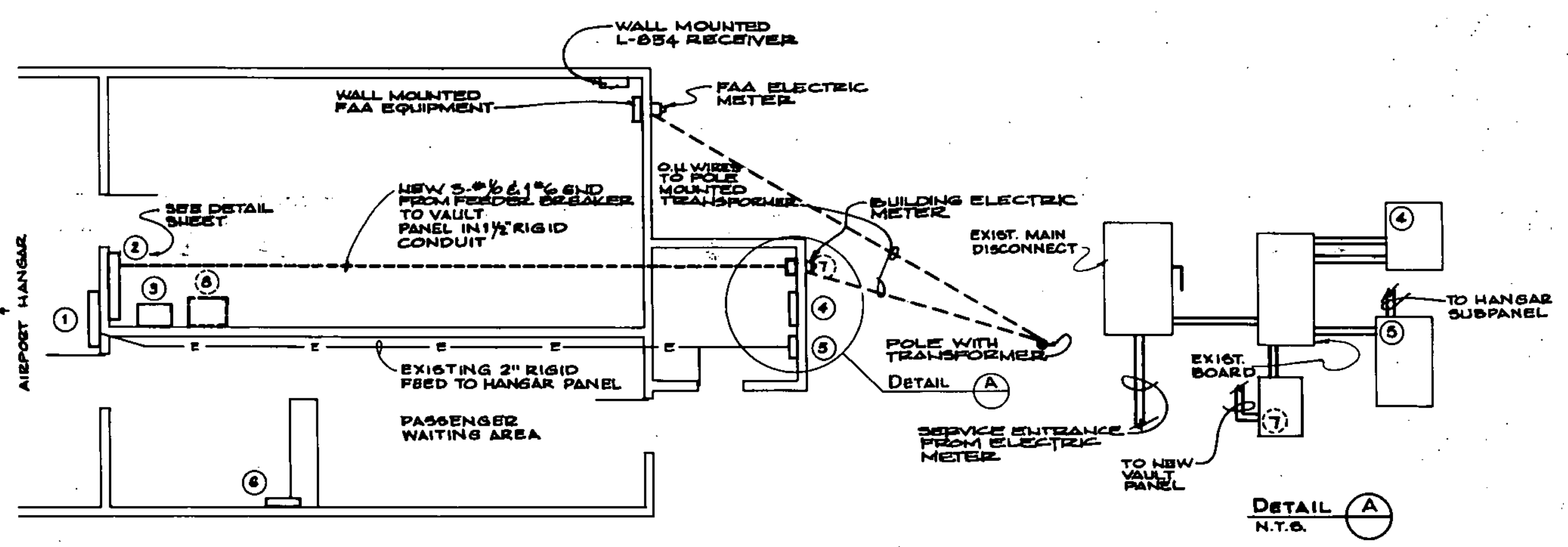


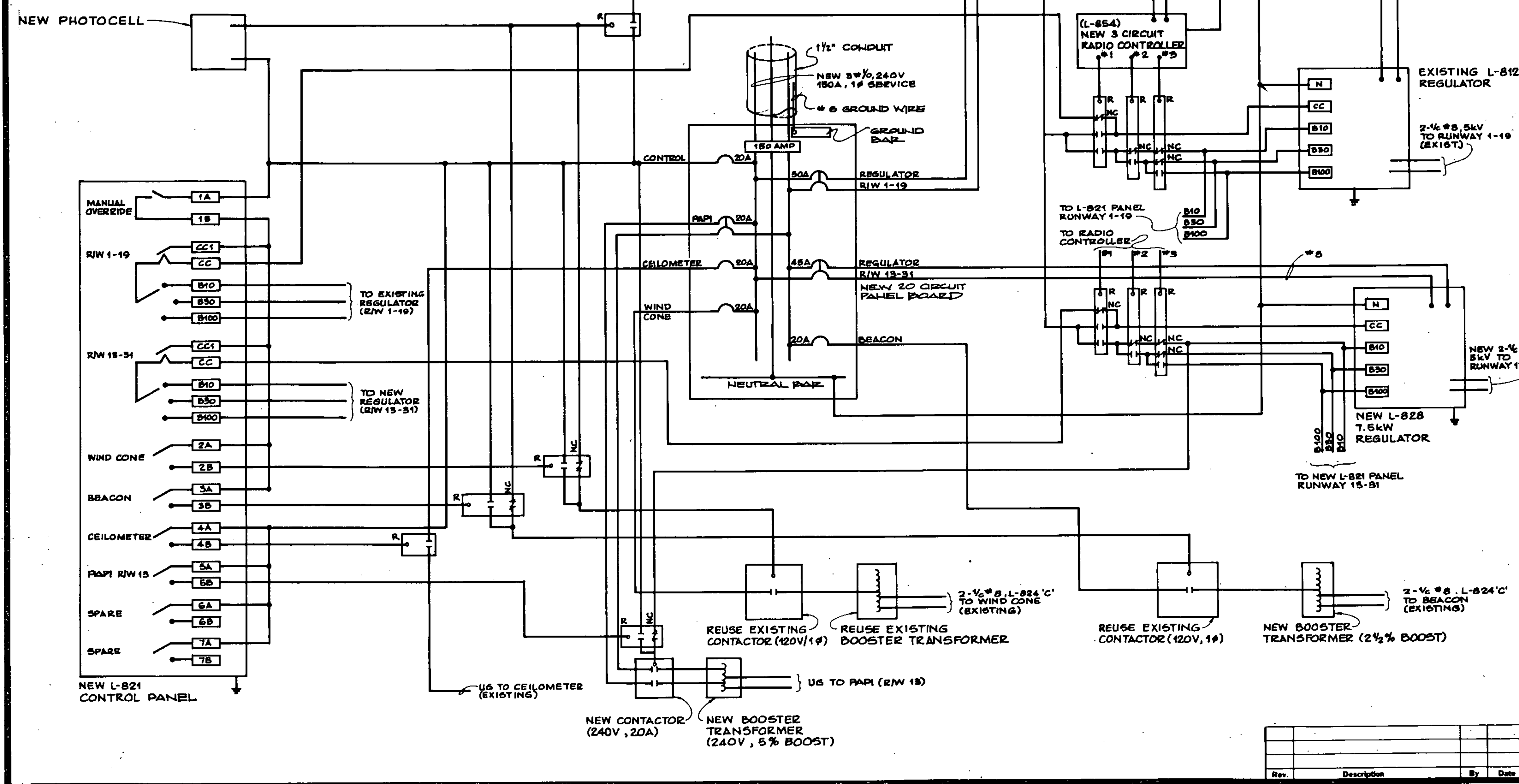
EXISTING VAULT WIRING DIAGRAM
N.T.S.



TERMINAL AREA/VAULT FLOOR PLAN
N.T.S.

- EQUIPMENT SCHEDULE**
- ① EXIST. HANGAR PANEL (100A - HANGAR/VAULT)
 - ② EXIST. VAULT PANEL (VAULT ONLY)
 - ③ EXIST. 7.5kW REGULATOR (R/W 1-19)
 - ④ EXIST. PANEL (HEATING SYSTEM, WELL, OFFICE) (50AMP)
 - ⑤ EXIST. 100A FEEDER BREAKER (HANGAR/VAULT)
 - ⑥ EXIST. L-821 PANEL TO BE REMOVED, REPLACE WITH NEW.
 - ⑦ NEW 150A FEEDER BREAKER (VAULT SERVICE ONLY)
 - ⑧ NEW 7.5kW REGULATOR (R/W 13-31) L-828

- GENERAL NOTES:**
1. RUNWAY 1-19 LIGHTING TO REMAIN IN SERVICE (NIGHTTIME) DURING CONSTRUCTION.
 2. ALL WIRING 1/2" #12 UNLESS OTHERWISE NOTED.
 3. R = 120VAC RELAY WITH NEON INDICATING LIGHT. USE SQUARE "D", KP15 OR EQUAL.
 4. PHOTOCELL - USE CROUSE-HINDS MODEL PEC-4 OR EQUAL. MOUNT ON NORTH SIDE OF BUILDING OR AS DIRECTED BY THE ENGINEER.
 5. WIND CONE & BEACON ARE TO OPERATE ON PHOTOCELL FOR CONTINUOUS NIGHTTIME OPERATION.
 6. NORMAL OPERATIONS OF MIRLS TO BE VIA RADIO CONTROL.
 7. ALL CONTACTORS, RELAYS, ETC. TO BE MOUNTED IN NEMA-4 ENCLOSURE.
 8. NEUTRAL CONDUCTORS NOT SHOWN.
 9. RADIO CONTROL OPERATION - FREQUENCY: 122.5 MHz
CIRCUIT #1 MIRLS 40% (3 CLICKS)
CIRCUIT #2 MIRLS 50% (5 CLICKS)
CIRCUIT #3 MIRLS 100% (7 CLICKS)
 10. NEW BOOSTER TRANSFORMERS - 120, 240 PRIMARY, 120V SECONDARY @ 8.5A, 100VA RATING. USE ACME ELECTRIC CAT. NO. T-81048 OR EQUAL. CONNECT FOR INPUT VOLTAGE & PERCENT BOOST AS LISTED ABOVE.
 11. RADIO ANTENNA, MOUNT ON ROOF OF TERMINAL BUILDING.
 12. EXISTING ELECTRICAL EQUIPMENT NOT BEING REUSED TO BE STORED ON AIRPORT PROPERTY AS ORDERED BY THE ENGINEER.
 13. ALL WIRING SHALL BE IN ACCORDANCE WITH LATEST EDITION OF THE NATIONAL ELECTRICAL CODE.



A.I.P. PROJECT NO. 3-50-0015-04

RUTLAND STATE AIRPORT

VAULT LAYOUT

	Client No.	80-0182	
	Proj. Manager	G.W. D'AMICO	
	Proj. Designer	E.S. DAWES	
	Drawn By	C.W. HILLS	
	Checked By	G.W. D'AMICO	
	Scale	AS SHOWN	
Approved		Sheet	9 of 30
Date			

Rev.	Description	By	Date

DRAWING 44-132-4337-3