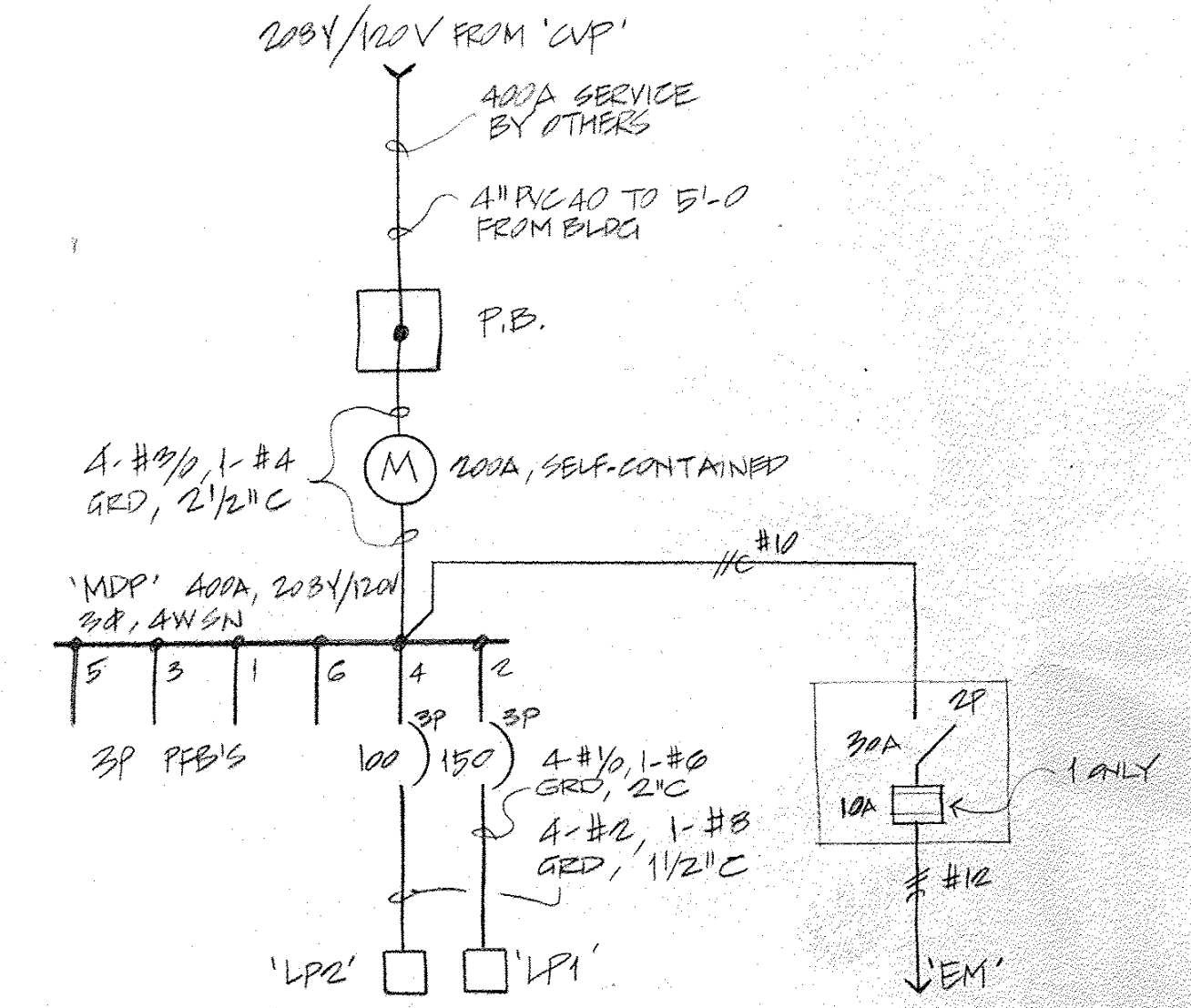


Type	Description	Lamps	Equal to
A	FLUORESCENT 2-LAMP WRAP-AROUND WITH PRISMATIC ACRYLIC DIFFUSER	2-F40W	LITHONIA SC240
B	OPEN		
C	SIMILAR TO 'A', 4 LAMPS	4-F40W	LITHONIA SC440
D	FLUORESCENT 24 X 48 SURFACE WITH 4 LAMPS, 1/2 X 1/2 ALUM. EGGRATE DIFFUSER, PAINT AS DIR'D	4-F40W	DAY-BRITE "DAYLUM"
E	SIMILAR TO 'D', 24 X 48, 2-LAMP	2-F40W	
F	SAME AS 'E', BUT WITH 2 SINGLE LAMP BALLASTS	2-F40W	
G	FLUORESCENT OPEN STRIP, 2-LAMP	2-F40W	LITHONIA C140
H	FLUORESCENT OPEN STRIP, 1-LAMP	1-F40W	LITHONIA C240

I	WALL MOUNTED SINGLE-LAMP FLUOR. METAL BOX SHIELD, BRONZE FIN.	1-F40W	LIGHTOLIER C04-4241
J	SIMILAR TO 'I', BUT WITH LO-TEMP BALLASTS	2-F40W	LIGHTOLIER C04-4281
K	WALL-MOUNTED SINGLE-LAMP FLUOR. OPAL ACRYLIC WRAP-AROUND DIFF'R	1-F40W	PRESCOLITE 3087
L	EXTERIOR INCAND. WALL BRACKET, 6 IN. DIA., BRONZE FIN.	A19 91W	PRESCOLITE 1165-363
M	INCAND. PENDANT 6-IN. CYLINDER BRONZE FIN.	PAR-38 136W FL	PRESCOLITE 1125-920
MI	SAME AS 'M'	R-30, 75W	
N	INCAND. SURFACE 5-IN. CYLINDER BRONZE FIN.	R-30 75W	PRESCOLITE 1102-910
O	FLUORESCENT SINGLE-LAMP VANDAL PROOF, POLY CARB LENS	F40W	KENALL 7140
O1	SAME AS 'O' BUT WITH LO-TEMP BALLAST		

**SYMBOL LEGEND**

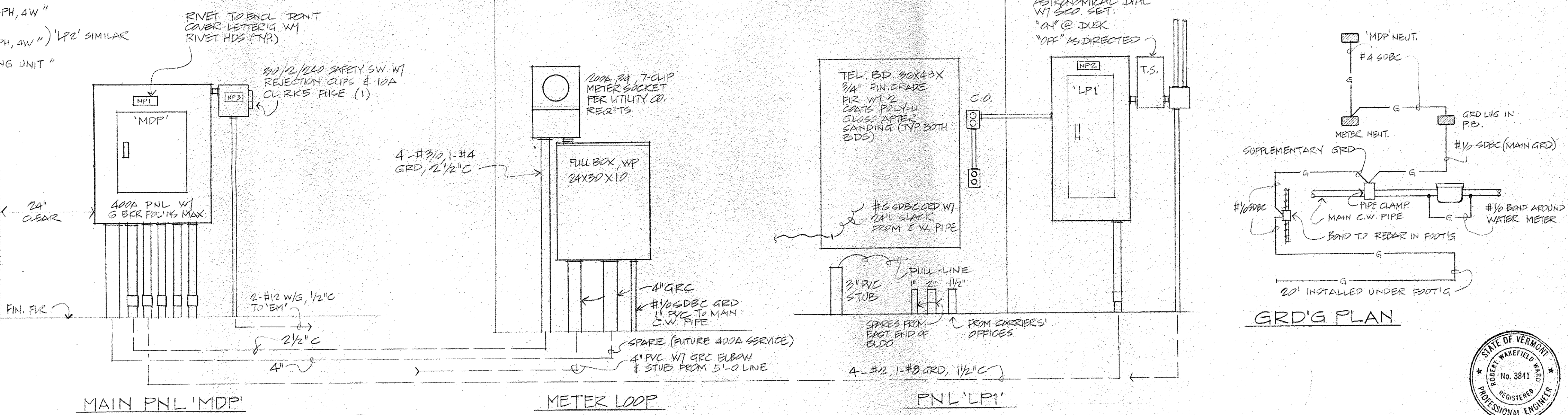
- Branch circuits concealed in ceiling or wall, 2 No. 12 wires in raceway unless otherwise noted. Hash marks indicate number of wires when more than two.
- Branch circuit as above concealed in floor or ground.
- Branch circuit as above exposed.
- Auxiliary circuit (T = telephone, S = sound, &c).
- Home run to panelboard or cabinet (No. of arrows = No. circuits).
- Fluorescent light fixture, ceiling mounted, with circuit number inside and type designation outside.
- Fluorescent fixture, wall mounted, as above.
- Fluorescent strip fixture, ceiling mounted, as above.
- Fluorescent strip fixture, wall mounted, as above.
- Incandescent fixture, ceiling mounted, as above. PC = PULL CHAIN
- Incandescent fixture, wall mounted, as above.
- Exit light, ceiling mounted, directional arrows as required.
- Exit light, wall mounted. FACE INDICATED SELF ILLUMINATED.
- Junction box installed in floor or ceiling.
- Junction box installed in wall.
- Duplex convenience outlet, 2P, 3W grounding type. + 1/2" U.O.N.
- Duplex outlet as above, SPLIT WIRED.
- Convenience outlet installed in floor.
- Special purpose outlet, rating as noted.
- Clock outlet.
- Telephone outlet.
- Telephone outlet installed in floor.
- Wall switch, single-pole (P = pilot light). + 48" U.O.N.
- Wall switch, double-pole.
- Wall switch, three-way (4 = 4-way).
- Dimmer, rating as noted.
- Panelboard, power.
- Panelboard or load center, lighting.
- Telephone cabinet.
- Electric Motor with HP noted.
- Functional HP motor less than 1/8 HP.
- Safety switch, HP-rated, non-fusible unless otherwise noted.
- Magnetic motor starter, across-the-line unless otherwise noted.
- Manual motor starter.
- Dry-type transformer, rating as noted.
- Fire alarm pull station.
- Fire alarm bell with bell diameter noted.
- Fire alarm annunciator panel.
- Fire alarm control cabinet.
- Fire alarm detector, temperature type.
- Fire alarm detector, smoke type.
- Signal outlet installed in ceiling (I = intercom, S = speaker, TV = television, M = microphone, PA = public address, V = volume control).
- Signal outlet installed in floor.
- Signal outlet installed in wall.
- Bell.
- Buzzer.
- Push button.
- T-STAT, PROVIDED BY MECH.



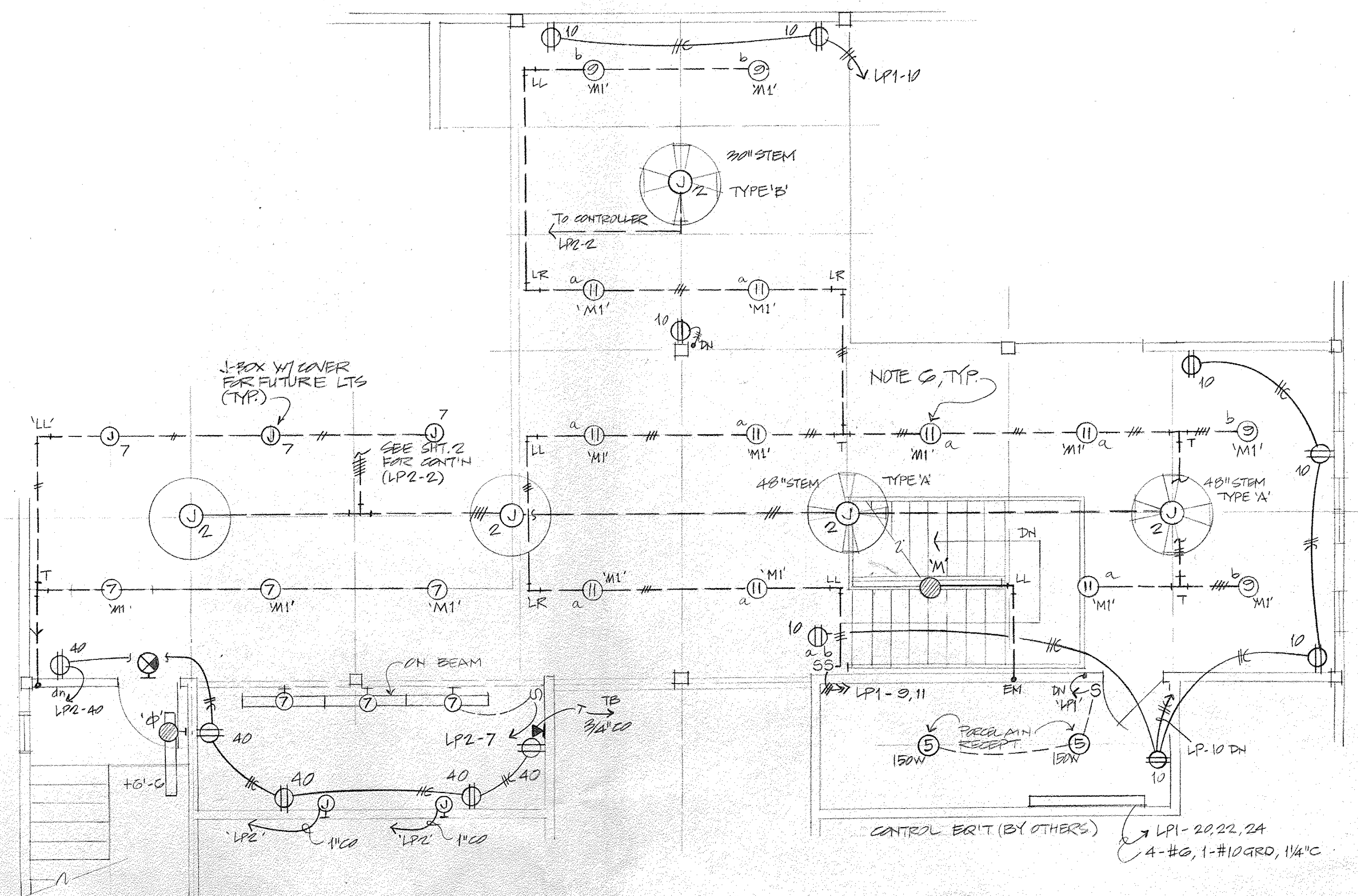
**2 SINGLE-LINE DIAG.**  
E-1 NO SCALE

**NAME PLATES**

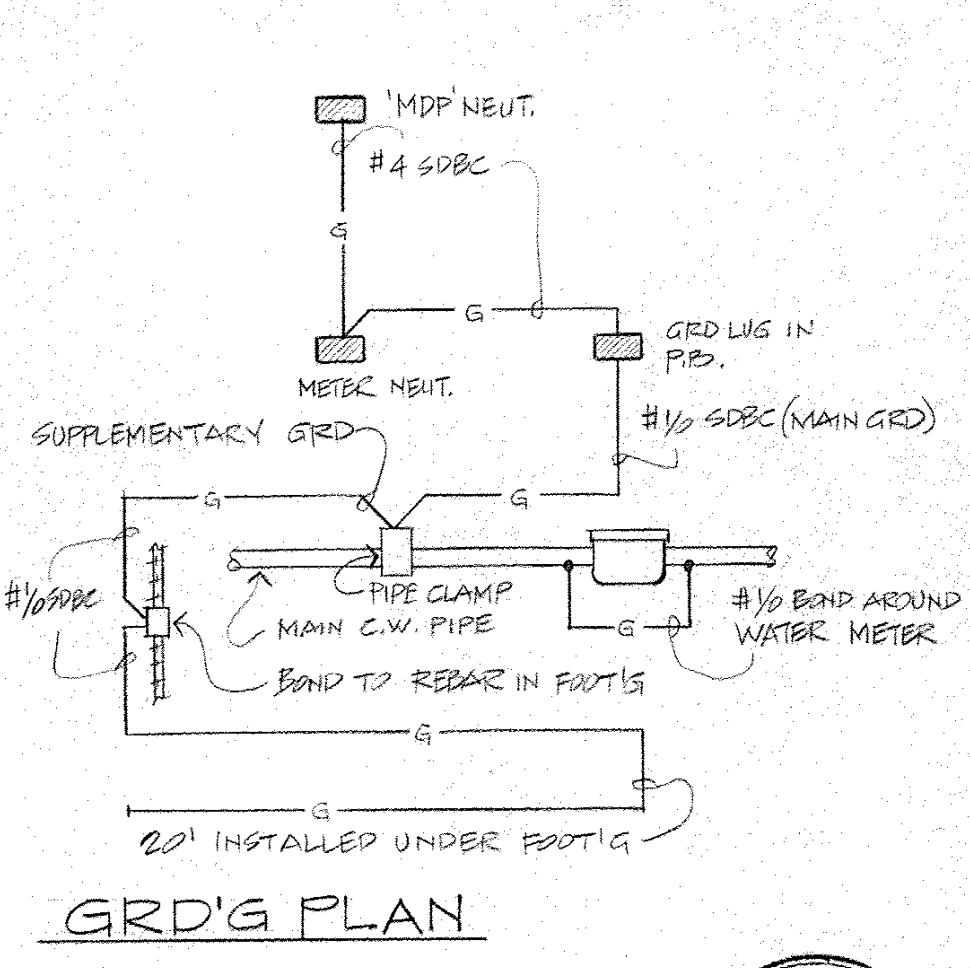
- PLASTIC LAMINATE YELLOW W/ BLACK LETTERS
- NP1 "PANEL 'MDP'" 100A, 120/208V, 3-PH, 4W"
- NP2 "PANEL 'LPI'" 100A, 120/208V, 3-PH, 4W" (LPE' SIMILAR)
- NPS "EMERGENCY LIGHTING UNIT"



**1 EQ'T ELEVATIONS**  
E-1 SCALE: 3/4" = 1'-0"



**2 MEZZANINE PLAN**  
E-1 SCALE: 1/4" = 1'-0"



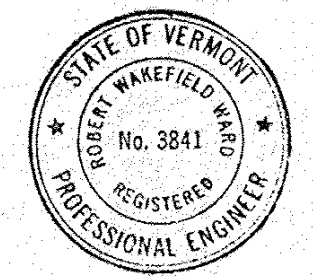
**GRD'S PLAN**

STATE OF VERMONT  
DIVISION OF STATE BUILDINGS  
AGENCY OF ADMINISTRATION  
MONTPELIER, VERMONT

**RUTLAND TERMINAL BUILDING AIR 23-2024**  
**MEZZ. ELEC. PLAN & DETS.**  
RUTLAND STATE AIRPORT  
CLARENDON, VERMONT

DATE: JUNE 21, 1984  
SCALE: AS NOTED  
DRAWN BY: [Signature]  
APPROVED BY: [Signature]

REVISIONS:  
DWG. NO. E-1  
14 OF 19



8/10/84

Wakefield Ward & Associates, Ltd.  
Consulting Electrical Engineer