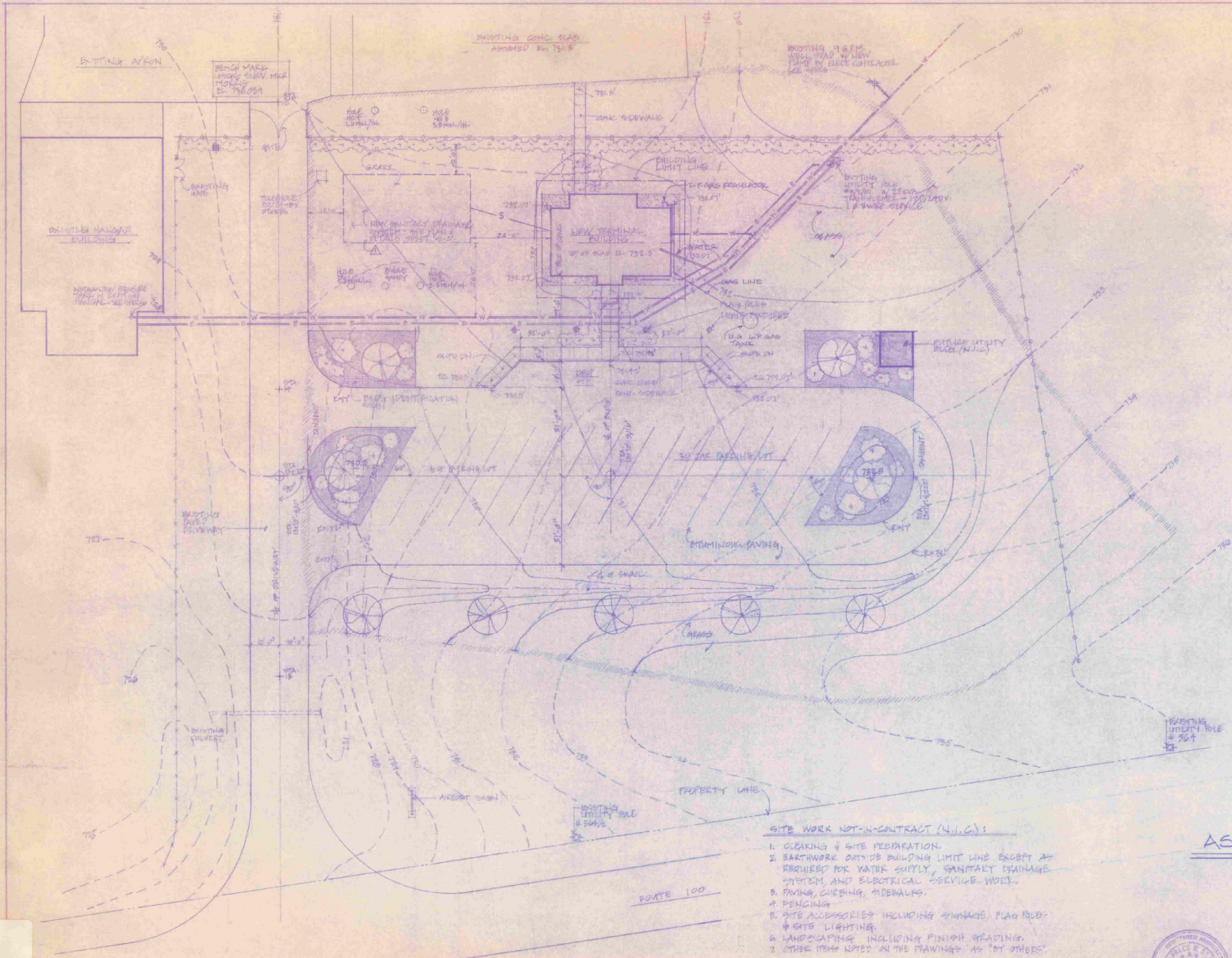


AKR 23-2010
★ 1984



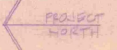
- NOTES**
1. EXISTING CONSTRUCTION NOT SHOWN ON PLAN IS TO BE REMOVED.
 2. CONTOURS TAKEN FROM SURVEY OF MORRISVILLE-STOWE STATE AIRPORT DATED JUNE, 1962. PROJECT-AIR 23-2010 BY STATE OF VERMONT, AGENCY OF TRANSPORTATION.
 3. CUT & FILL IS TO BE BALANCED. MAKE FINAL ADJUSTMENTS TO FORTH & FINISH GRADING AS PER FIELD INSTRUCTION.

- LEGEND**
- w--- EXISTING WATER LINE TO BE ABANDONED
 - w--- EXISTING WATER LINE - 1" AVG
 - e--- EXISTING ELECTRICAL SERVICE
 - s--- SANITARY SEWER LINE
 - w--- WATER LINE
 - e--- ELECTRICAL SERVICE
 - g--- GAS LINE
 - x--- EXISTING CHAIN LINK FENCE TO REMAIN
 - WOOD POST & BEAM FENCE
 - ⊗ HEDGE
 - ⊙ DECIDUOUS TREE
 - MULCH BED
 - SHRUB
 - ⊗ CONIFEROUS TREE
 - ▨ GRAVEL BED
 - EXISTING CONTOUR
 - NEW CONTOUR
 - SEEDING & GRADING LIMITS
 - PERCOLATION TEST HOLE REFERRED JUNE 28, 1962 BY STATE OF VERMONT
 - BUILDING LIMIT LINE

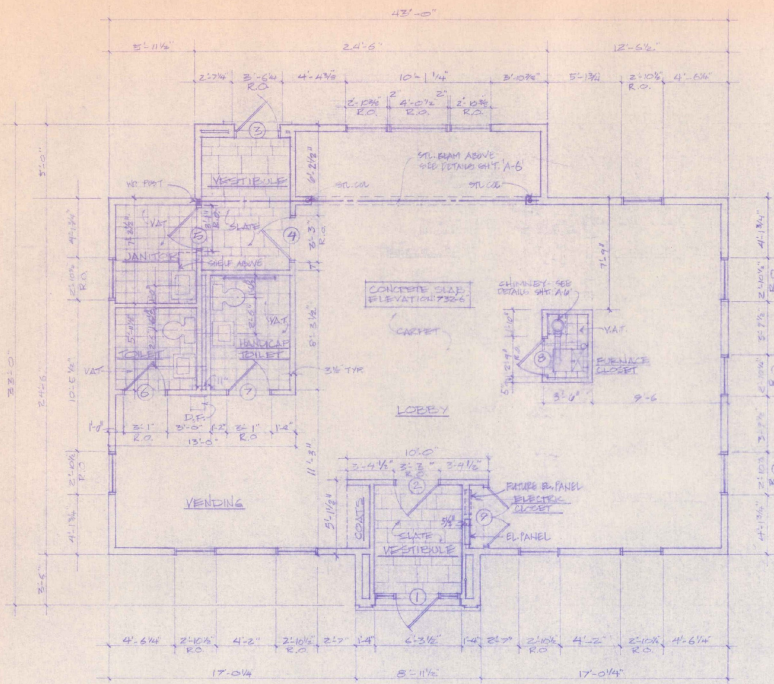
- SITE WORK NOT-IN-CONTRACT (N.I.C.):**
1. CLEANING & SITE PREPARATION.
 2. BARTWORK OUTSIDE BUILDING LIMIT LINE EXCEPT AS REQUIRED FOR WATER SUPPLY, SANITARY DRAINAGE SYSTEM AND ELECTRICAL SERVICE WORK.
 3. PAVING, CURBING, SIDEWALKS.
 4. FENCING.
 5. SITE ACCESSORIES INCLUDING SIGNAGE, FLAG POLES & SITE LIGHTING.
 6. LANDSCAPING INCLUDING FINISH GRADING.
 7. OTHER ITEMS NOTED ON THE PLANS AS "BY OTHERS".

AS BUILT

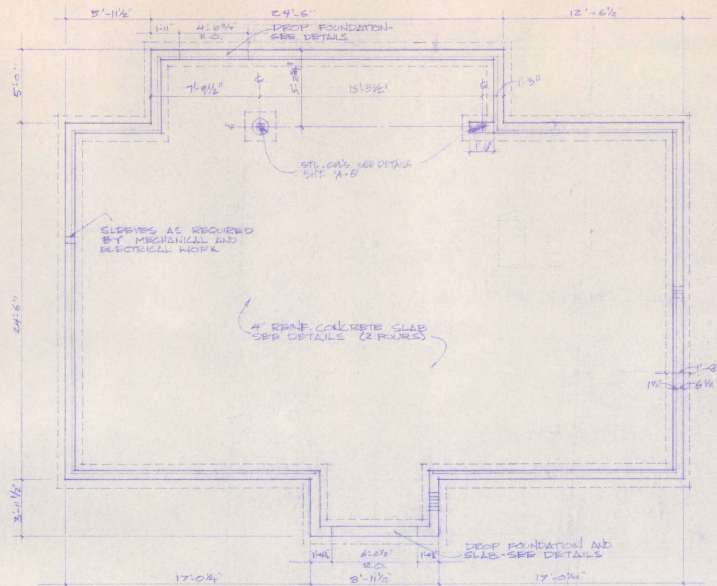
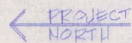
SITE PLAN · 1/8" = 1'-0"



STATE OF VERMONT			
DIVISION OF STATE BUILDINGS			
AGENCY OF ADMINISTRATION			
MONTPELIER,		VERMONT	
SITE PLAN			
NEW TERMINAL BUILDING MORRISVILLE-STOWE STATE AIRPORT MORRISVILLE VERMONT			
DATE MAY 28 1984	SCALE 1/8" = 1'-0"	REVISIONS	DWG. NO. S-1
DRAWN BY GMS	APPROVED BY GMS		L OF 10



FLOOR PLAN



FOUNDATION PLAN

SEE SECTIONS FOR SLAB, FOUNDATION, AND FOOTING DETAILS

DOOR SCHEDULE

NO	SIZE	TYPE	HOW	COMMENTS
1	2'-0" x 7'-0" x 1 3/4"	WD RAIL & STYLE	1	0126 NIGHTS UNDERCUT DOOR #1
2	3'-0" x 7'-0" x 1 3/4"	WD RAIL & STYLE	2	MATCH DOOR NO. 1.
3	3'-0" x 7'-0" x 1 3/4"	WD RAIL & STYLE	1	TRANSOM. SEE DETAIL. DOOR #1 NECESSARY.
4	3'-0" x 7'-0" x 1 3/4"	WD RAIL & STYLE	2	MATCH DOOR NO. 1. UNDERCUT DOOR #1.
5	2'-10" x 6'-8" x 1 3/4"	WD. FLUSH	4	"C" LABEL. UNDERCUT DOOR #1.
6	2'-10" x 6'-8" x 1 3/4"	WD. FLUSH	3	UNDERCUT DOOR 3/4".
7	2'-10" x 6'-8" x 1 3/4"	WD. FLUSH	3	UNDERCUT DOOR 3/4".
8	2'-0" x 6'-8" x 1 3/4"	WD LOUVER	5	-
9	4'-0" x 6'-8" x 1 3/4"	WD LOUVER	5	PAIR OF LOUVERS. PROVIDE METALLIC FINISHING FOR 85%.

GENERAL NOTES

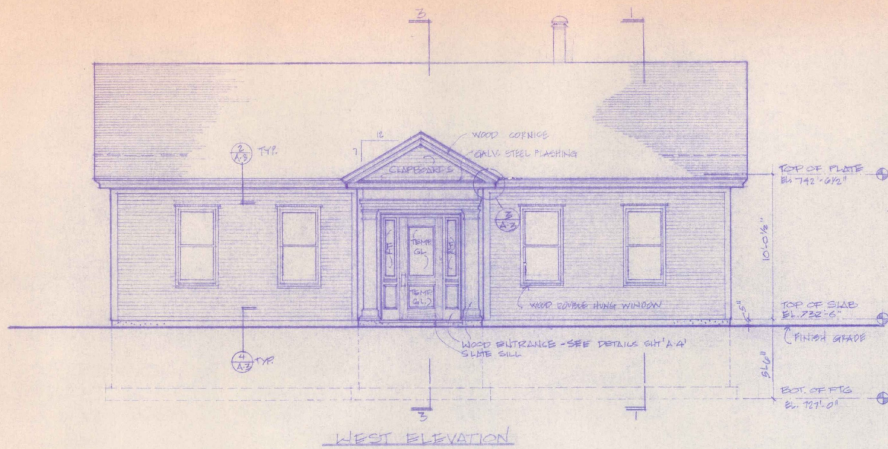
- 1 ALL DIMENSIONS ARE FINISH DIMENSIONS (FACE OF STUD, CONC, ETC.) UNLESS OTHERWISE NOTED.
- 2 CONCRETE IS RESPONSIBLE FOR VENTILATION AND COORDINATION TO ALL DIMENSIONS.
- 3 OBTAIN ALL PERMITS AND PAY ALL FEES REQUIRED FOR CONSTRUCTION.

STATE OF VERMONT
 DIVISION OF STATE BUILDINGS
 AGENCY OF ADMINISTRATION
 MONTPELIER, VERMONT

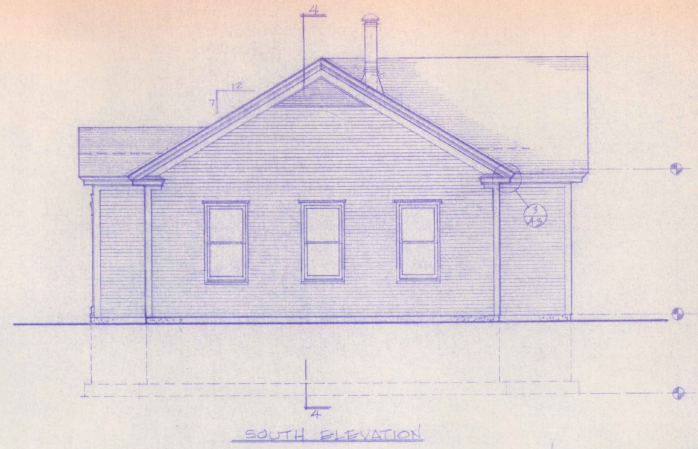
FLOOR & FOUNDATION PLANS
 NEW TERMINAL BUILDING
 MORRISVILLE/STOWE STATE AIRPORT
 MORRISVILLE, VERMONT

DATE: 2-11-68	SCALE: 1/4" = 1'-0"	REVISIONS:	DWG. NO. A-1
DRAWN BY: S. C. HARRIS	APPROVED BY: C. W. HARRIS		3 OF 10



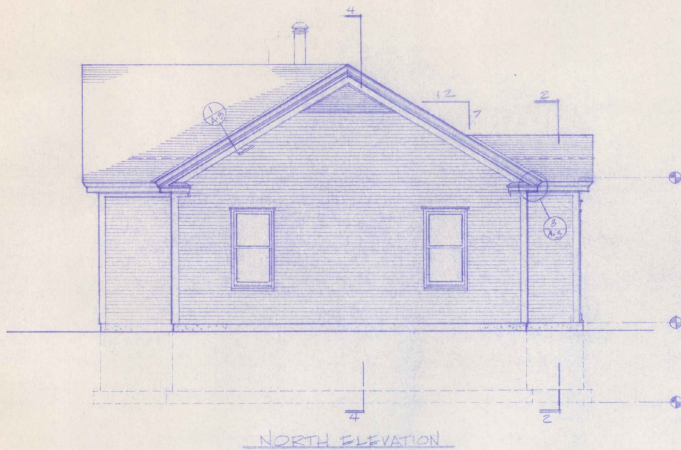


WEST ELEVATION

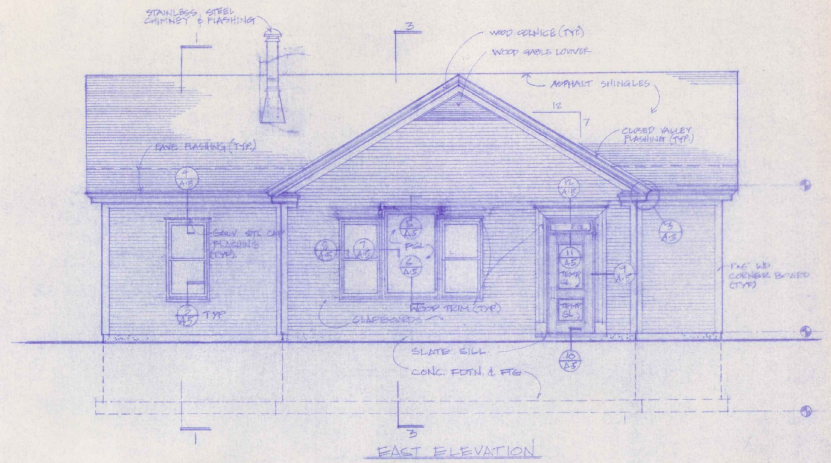


SOUTH ELEVATION

NOTE
 TYP DOUBLE HUNG WINDOW
 CAROLCO PRIME WOOD # 28328



NORTH ELEVATION



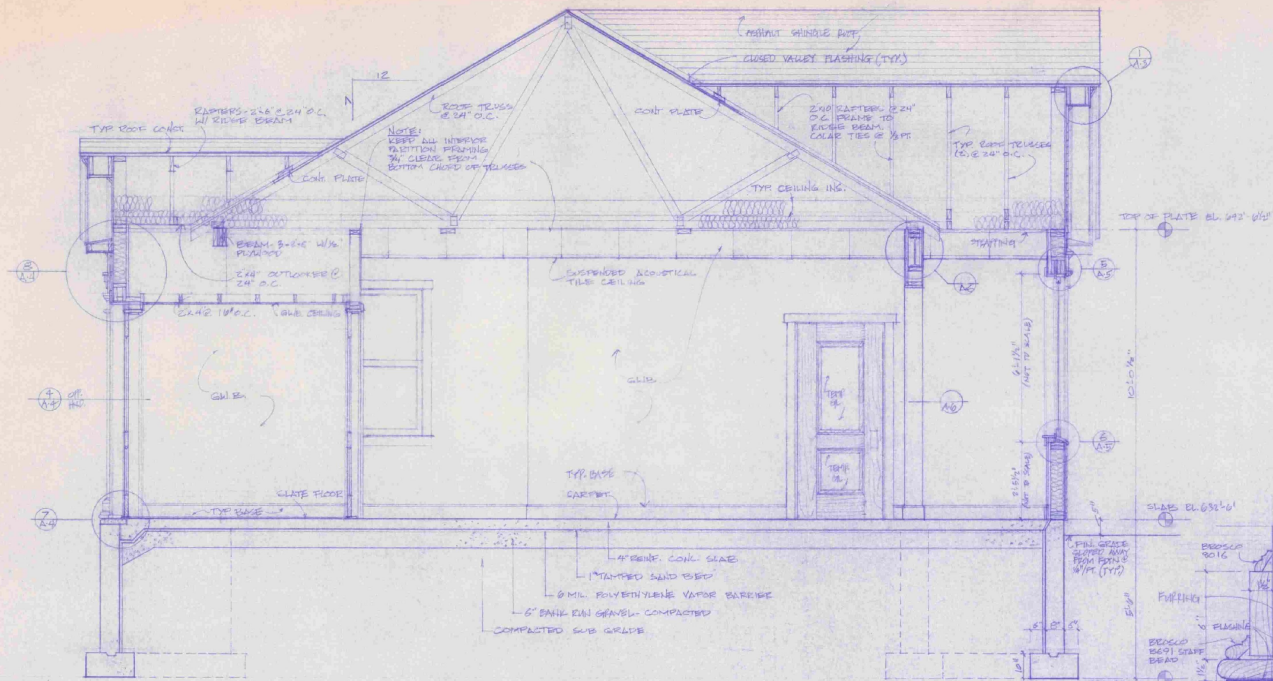
EAST ELEVATION

STATE OF VERMONT
 DIVISION OF STATE BUILDINGS
 AGENCY OF ADMINISTRATION
 MONTPELIER, VERMONT

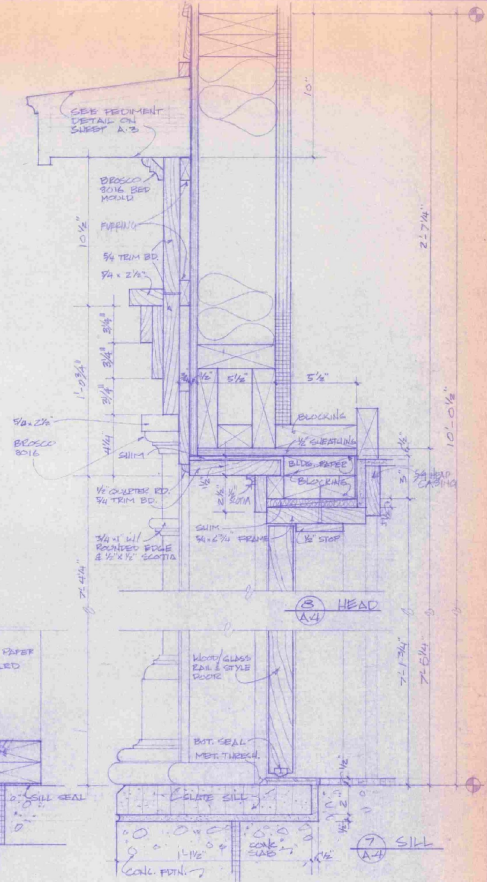
ELEVATIONS
 NEW TERMINAL BUILDING
 MORRISVILLE/STOWE STATE AIRPORT
 MORRISVILLE VERMONT

DATE: JULY 2, 1989	SCALE: 1/4" = 1'-0"	REVISIONS:	DWG. NO. A-2
DRAWN BY: S.M.	APPROVED BY: S.M.		1 of 10

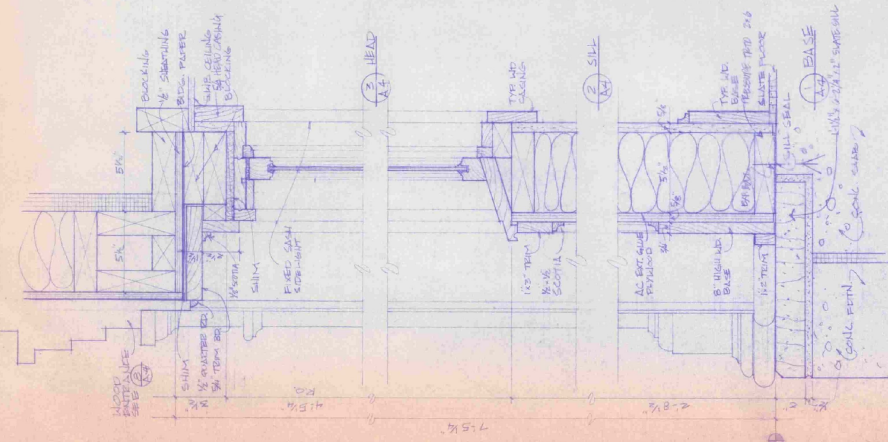




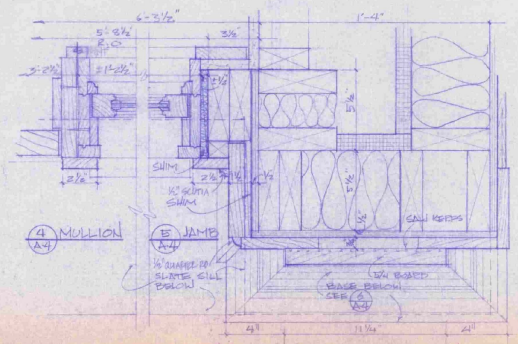
SECTION - 3
1/2" = 1'-0"



ENTRANCE/DOOR DETAILS - SECTION
3" = 1'-0"



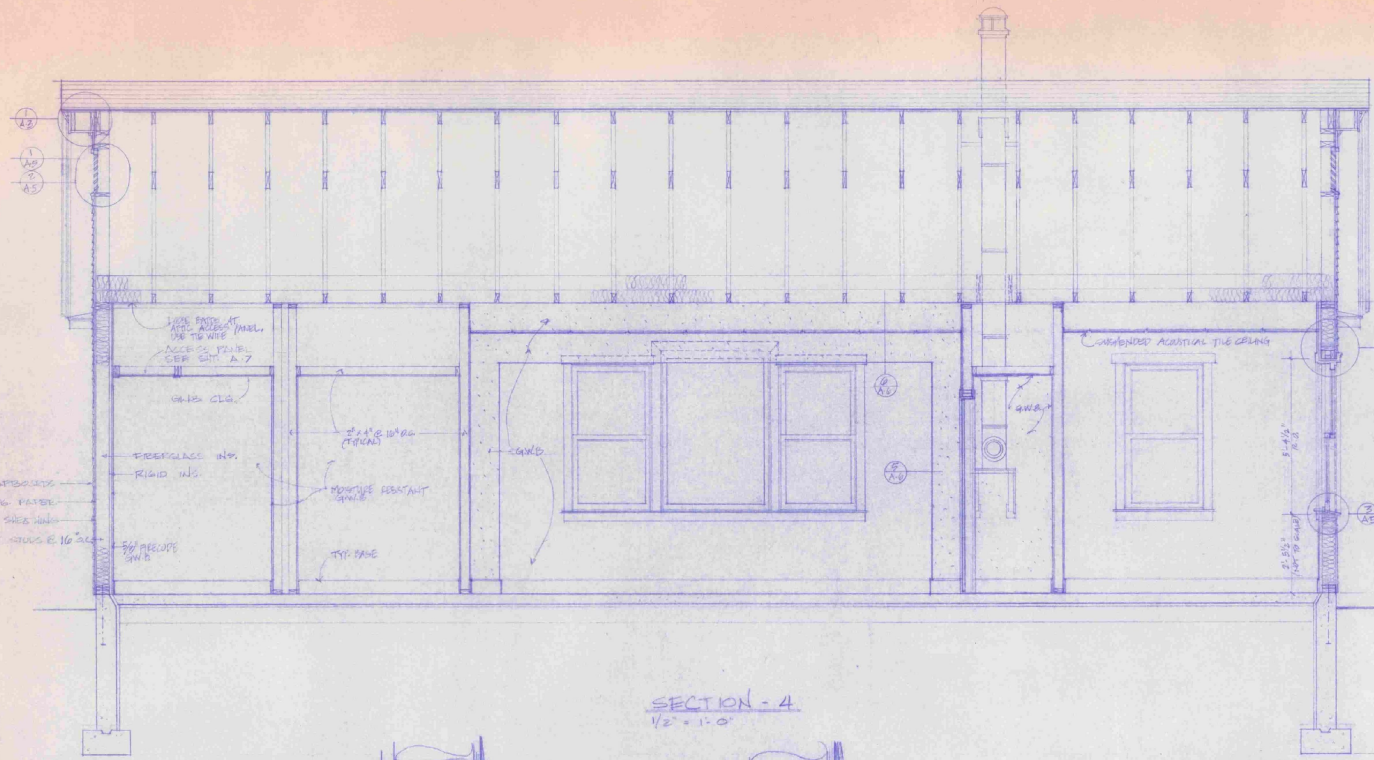
SIDELIGHT DETAILS @ ENTRANCE - SECTION
3" = 1'-0"



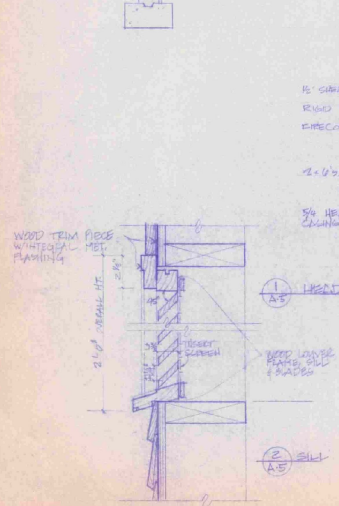
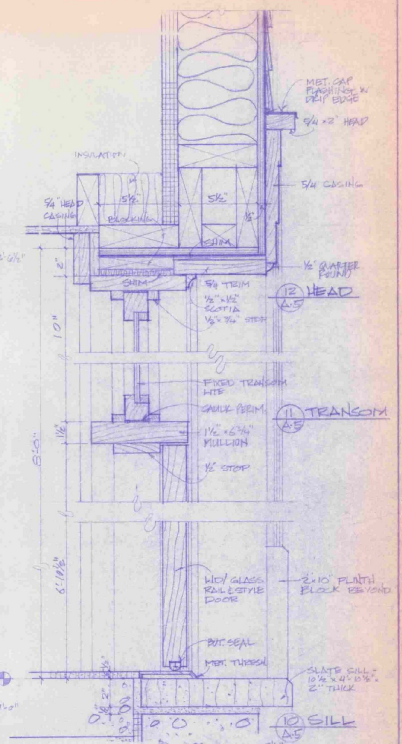
ENTRANCE/SIDELIGHT DETAILS - PLAN
3" = 1'-0"

STATE OF VERMONT			
DIVISION OF STATE BUILDINGS			
AGENCY OF ADMINISTRATION			
MONTPELIER, VERMONT			
SECTIONS AND DETAILS			
NEW TERMINAL BUILDING			
MORRISVILLE/STOWE STATE AIRPORT			
MORRISVILLE VERMONT			
DATE:	SCALE:	REVISIONS:	DWG. NO.
July 6, 1953	AS NOTED		A-4
DRAWN BY:	APPROVED BY:		
SCHEMICK	CWB		1 OF 10

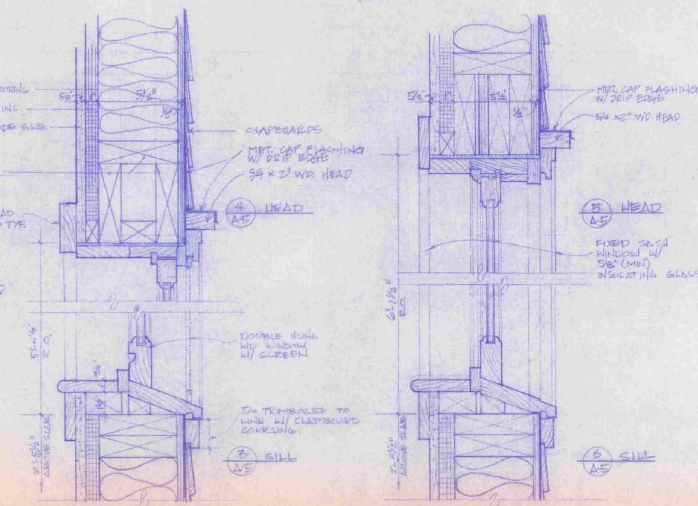




SECTION - 4
1/2" = 1'-0"

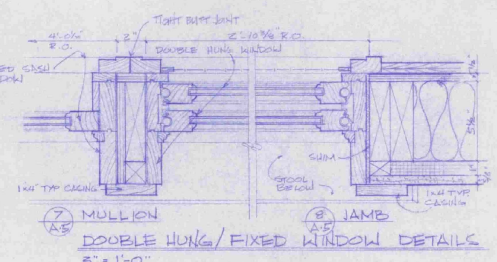


SECTION C GABLE VOWER
3" = 1'-0"

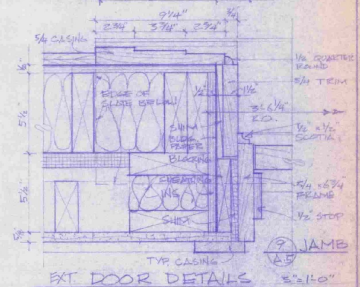


DOUBLE HUNG WINDOW DETAILS
3" = 1'-0"

FIXED WINDOW DETAILS
3" = 1'-0"



DOUBLE HUNG/FIXED WINDOW DETAILS
3" = 1'-0"



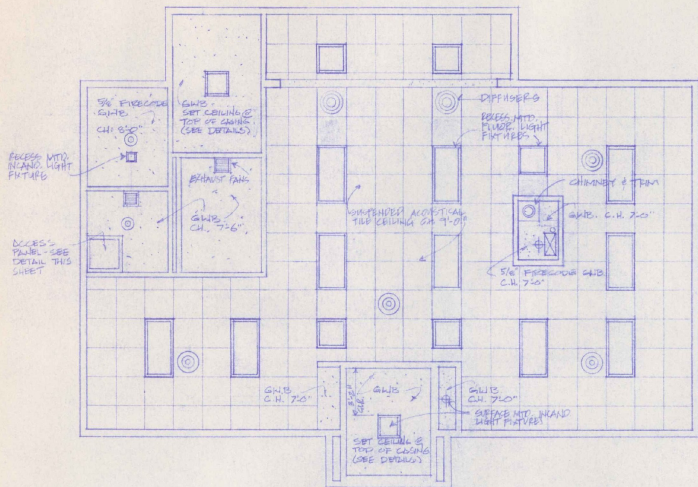
EXT. DOOR DETAILS
3" = 1'-0"

STATE OF VERMONT
DIVISION OF STATE BUILDINGS
AGENCY OF ADMINISTRATION
MONTPELIER, VERMONT

SECTIONS AND DETAILS
NEW TERMINAL BUILDING
MORRISVILLE/STOWE STATE AIRPORT
MORRISVILLE VERMONT

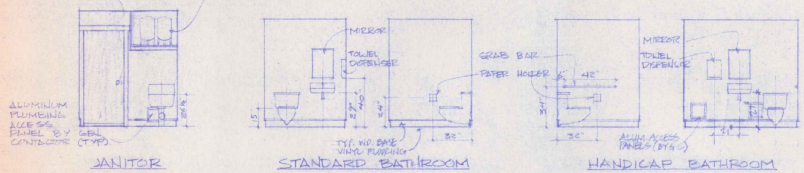
DATE: JULY 26, 1959	SCALE: AS NOTED	REVISIONS:	DWG. NO. A-5
DRAWN BY: C. EMMICK	APPROVED BY: C. W. B.		7 of 12



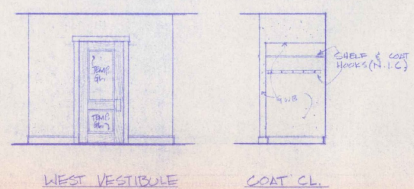


REFLECTED CEILING PLAN
1/4" = 1'-0"

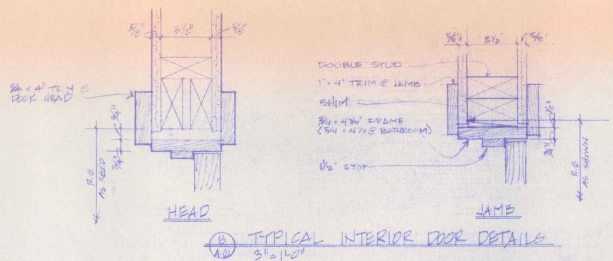
PLUMBING FIXTURES BY MECH CONTRACTOR
PAINTED PLUMBING SUPPORT SHEET BY GENERAL CONTRACTOR



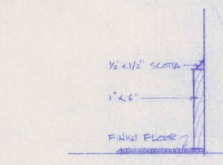
NOTE:
VINYL WALL COVERING TO BE INSTALLED ON ACCESS PANELS AND THREE WALLS IN EACH BATHROOM. DOOR WALL IN EACH BATHROOM IS TO BE PAINTED



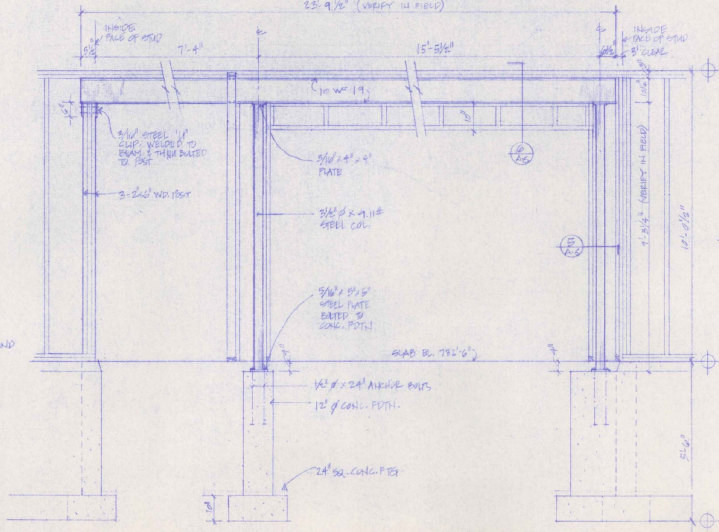
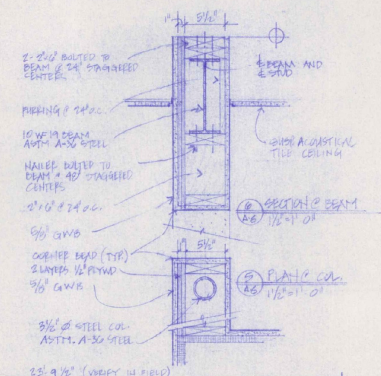
INTERIOR ELEVATIONS
1/4" = 1'-0"



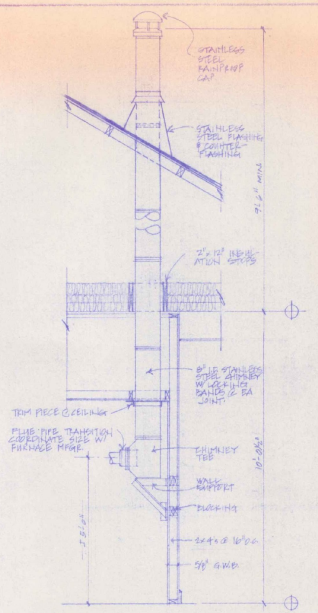
TYPICAL INTERIOR DOOR DETAILS
3/8" = 1'-0"



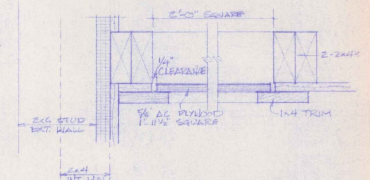
TYP WOOD BASE
3/8" = 1'-0"



ELEVATION @ STEEL BEAM & SUPPORTS
1/8" = 1'-0"



SECTION @ CHIMNEY
1/2" = 1'-0"



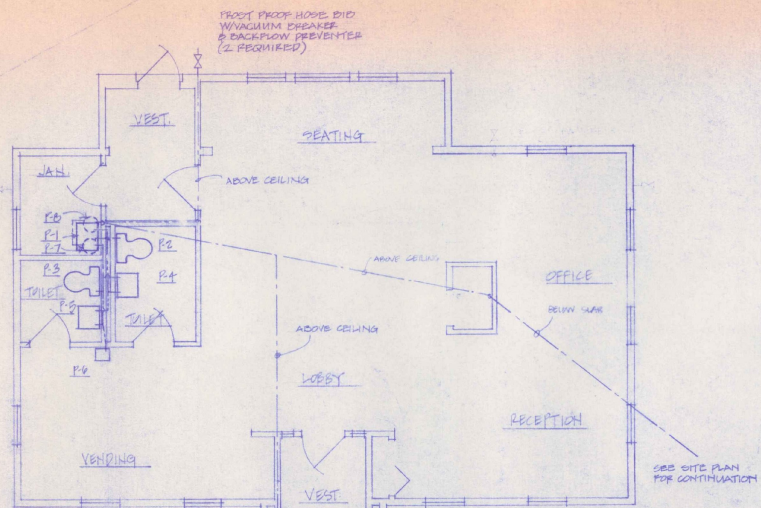
SECTION @ ATTIC ACCESS PANEL
3/8" = 1'-0"

STATE OF VERMONT
DIVISION OF STATE BUILDINGS
AGENCY OF ADMINISTRATION
MONTPELIER, VERMONT

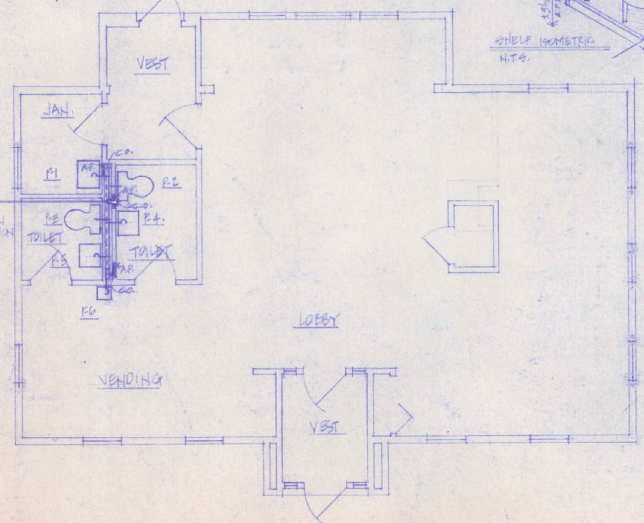
REFLECTED CEILING PLAN AND
INTERIOR DETAILS
NEW TERMINAL BUILDING
MORRISVILLE/STOWE STATE AIRPORT
MORRISVILLE, VERMONT

DATE: JULY 8, 1958	SCALE: AS NOTED	REVISIONS:	DWG. NO. A-8
DRAWN BY: S. BAKER	APPROVED BY: C. W. B.		8 OF 10

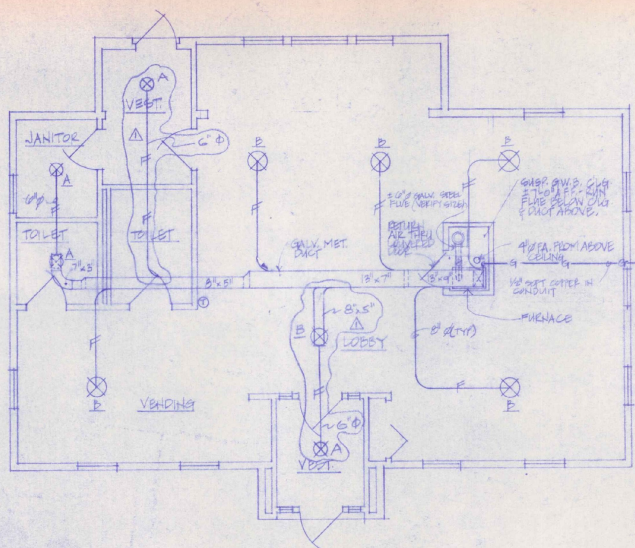
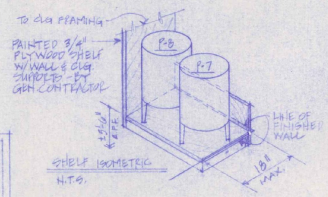




PLUMBING PLAN - WATER SUPPLY
1/4" = 1'-0"

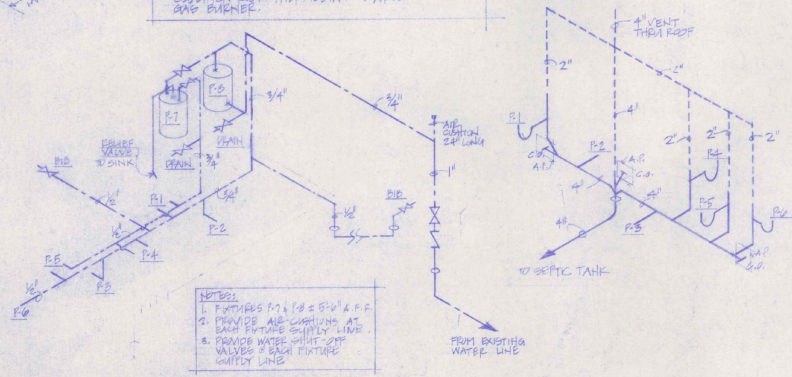


PLUMBING PLAN - SANITARY DRAINAGE
1/4" = 1'-0"

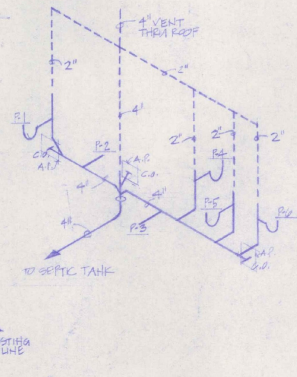


HEATING PLAN
1/4" = 1'-0"

NOTES:
1. OPERATION: FAN RUNS WHEN BONNET REACHES SET TEMPERATURE, FAN CAN OVERRIDE FOR SUMMER GAS BYPASS.
2. FURNACE P1 & P2 ARE 8"0" x 6"0"



RISE DIAGRAM - WATER SUPPLY



RISE DIAGRAM - SANITARY

HEATING LEGEND

- ⊗ DIFFUSER
- ⊙ THERMOSTAT
- ⊖ DRAFT DAMPER
- FA. FRESH AIR
- L.P. GAS SUPPLY
- FLEXIBLE DUCT

PLUMBING LEGEND

- COLD WATER PIPING
- HOT WATER PIPING
- VENT PIPING
- SANITARY PIPING
- ⊗ GATE VALVE/BID
- ⊖ CHECK VALVE
- G.O. CLEAN OUT
- ⊙ TRAP
- ⊙ LAB PENETRATION
- AP. ACCESS PANEL 12"12" BY SPECIAL CONTRACTOR

PLUMBING FIXTURE SCHEDULE

NO.	MANUFACTURER	MODEL
P1	AMERICAN STD. SERVICE SINK "MARBLE" W/ 1/2" HARD STD. FITTINGS TRIP BACK FAUCETS, 1" TRAP & VACUUM BREAKER.	8379-019 WHITE
P2	AMERICAN STD. WASTE CLOSET	8048-050 WHITE
P3	AMERICAN STD. LAVATORY "SCOTTISH" W/ WALL HANGER, ADJUSTABLE # 2379, 019 FAUCETS, # 2381, 18" FLEXIBLE SANITARY PIPE, # 2410, 020 ADJUSTABLE 1" TRAP, MOUNT FURNACE TO ST. AIR TO TOP OF SINK	0800-037 WHITE
P4	AMERICAN STD. PENICILIN FOUNTAIN	0150-020 WHITE
P5	FROM SEPTIC HOT WATER HEATER	64-102
P6	TERR. HYDRO-PNEUMATIC GAS TYPE	87-044
P7	WATER TANK W/ CONTROL & FITTINGS (P14)	85
BID	VACUUM BREAKER	

HEATING EQUIPMENT SCHEDULE

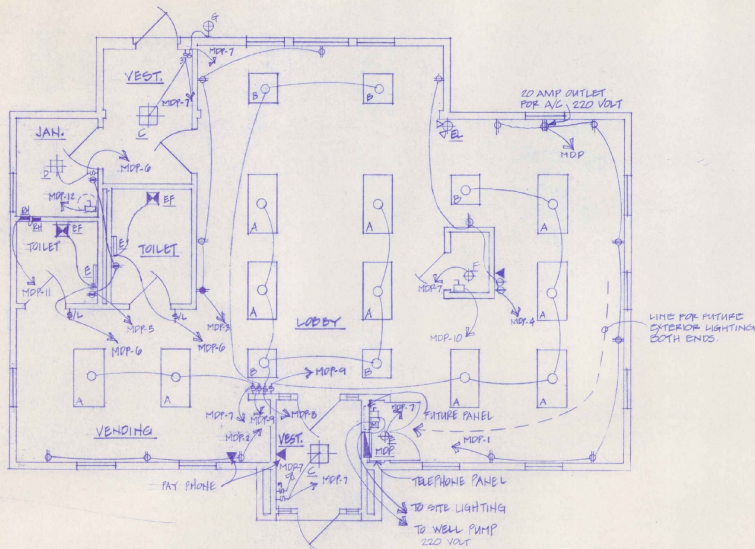
FURNACE	8"0" x 6"0" OR EQUAL W/ L.P. GAS CONVERSION ACCESSORIES (3000 CFM INPUT, HOT OILS BURN RELIGIOUSLY TESTED)	UGW 0800DUBN
DIFFUSERS	8"0" x 6"0" OR EQUAL W/ MODEL 10 RADIAL CAPTURE TYPE A, 1" NECK (300 CFM. EX. 108" O.D. TYPE B) 1" NECK (115 CFM. EX. 108" O.D.)	RF-25 WHITE
THERMOSTAT	WITH GAS CONTROLS OF EQUAL DAY/NIGHT W/ AUTO OVER RIDE	—

REVISED 10/11/83. STD. PER HEB

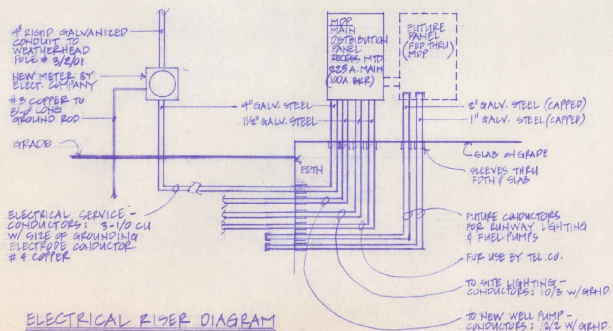
STATE OF VERMONT
DIVISION OF STATE BUILDINGS
AGENCY OF ADMINISTRATION
MONTPELIER, VERMONT

MECHANICAL PLANS
NEW TERMINAL BUILDING
MORRISVILLE/STONE STATE AIRPORT
MORRISVILLE VERMONT

DATE: 10/11/83 SCALE: 1/4" = 1'-0" REVISIONS: DWG. NO. 14-1
DRAWN BY: SWS APPROVED BY: H.J.S. 1 OF 10



ELECTRICAL PLAN



ELECTRICAL RISER DIAGRAM

NOTE: USE PVC CONDUIT EXCEPT AT THE FOLLOWING LOCATIONS - GALV. STEEL ABOVE GRADE AT MOTORS & PER UNDER SWEEP BENDS.

FIXTURE/EQUIPMENT SCHEDULE		
MARK	DESCRIPTION	MODEL #
A	2"x4" RECESS MTD. FLUOR. FIXT. "LITHONIA" W/2-40 W. LAMPS	2 95 240 A12
B	2"x2" RECESS MTD. FLUOR. FIXT. "LITHONIA" W/ 2-140 W. LAMPS	2 95 2440 A12
C	18" SURFACE MTD. INCAND. FIXT. "PRESOLITE" W/ 2-60W. BULBS	3601 WH
D	10"x10" RECESS MTD. INCAND. FIXT. "PRESOLITE" W/ 1-75 W. BULD	1015 HF-1
E	18" SURFACE MTD. FLUOR. FIXT. "PRESOLITE" W/ 1-40 W. LAMP	WB-10
F	SURFACE MTD. INCAND. FIXT. - RECESSED WITH PAUL SPARK 1-60W LAMP	-
G	SURFACE MTD. INCAND. FIXT. SEE EXTERIOR LOCATION. WHITE GLOBE & BLACK BEZEL. 1-60W LAMP. "PRESOLITE LIGHTING"	P-5026-00
EF	BATHROOM VENTILATOR 80CFM HOLOGRAPHIC DISCHARGE WITH BACK DRAFT DAMPER. "THERMADORE" TRADE WIND. (SEE NOTE #1, BELOW)	1205
EL	EMERGENCY LIGHT - TWIN CYLINDER "DUAL-LITE" W/ BATTERY & CHARGER, TEST SWITCH.	6VA 206
EH	RECEDED AIR WALL HEATER "MARKEL" MARK-11 1000 W. 250V WITH THERMAL LIMIT AND BUILT-IN TWO POLE THERMOSTAT	H3133 T2

NOTE #1: ELECTRICAL CONTRACTOR TO SUPPLY & INSTALL 4" GALV. STEEL DUCT WITH ELBOWS. DUCT TO RUN VERTICALLY FROM EXHAUST PATH TO A POINT ABOVE CEILING INSULATION. PROVIDE SUPPORTS AS NECESSARY.

LEGEND	
⊕	DUPLEX RECEPTACLE 20A. 10'A.F.F.
⊕	DUPLEX RECEPTACLE 20A 40'A.F.F. GROUND FAULT
⊕	QUICK RECEPTACLE 8A'A.F.F.
⊕	TELEPHONE JACK
⊕	DISCONNECT - FIRED
⊕	SINGLE POLE SWITCH 15A 40'A.F.F.
⊕	THREE WAY SWITCH 15A 40'A.F.F.
⊕	SINGLE POLE SWITCH 15A 40'A.F.F. WITH SIGNAL LAMP ON PLATE.
⊕	BATHROOM VENTILATOR
⊕	FLUORESCENT FIXTURE - LETTER DENOTES TYPE
⊕	INCANDESCENT FIXTURE - LETTER DENOTES TYPE
⊕	EMERGENCY LIGHT
⊕	FLUORESCENT FIXTURE - LETTER DENOTES TYPE
⊕	RESISTANCE HEATER WITH INTEGRAL CONTROL
⊕	ELECT. WATER HEATER - BY MECH. CONTRACTOR. ELECT. CONTRACTOR TO PROVIDE POWER & DISCONNECT.
⊕	REMOTE MOTOR CONTROL BOX

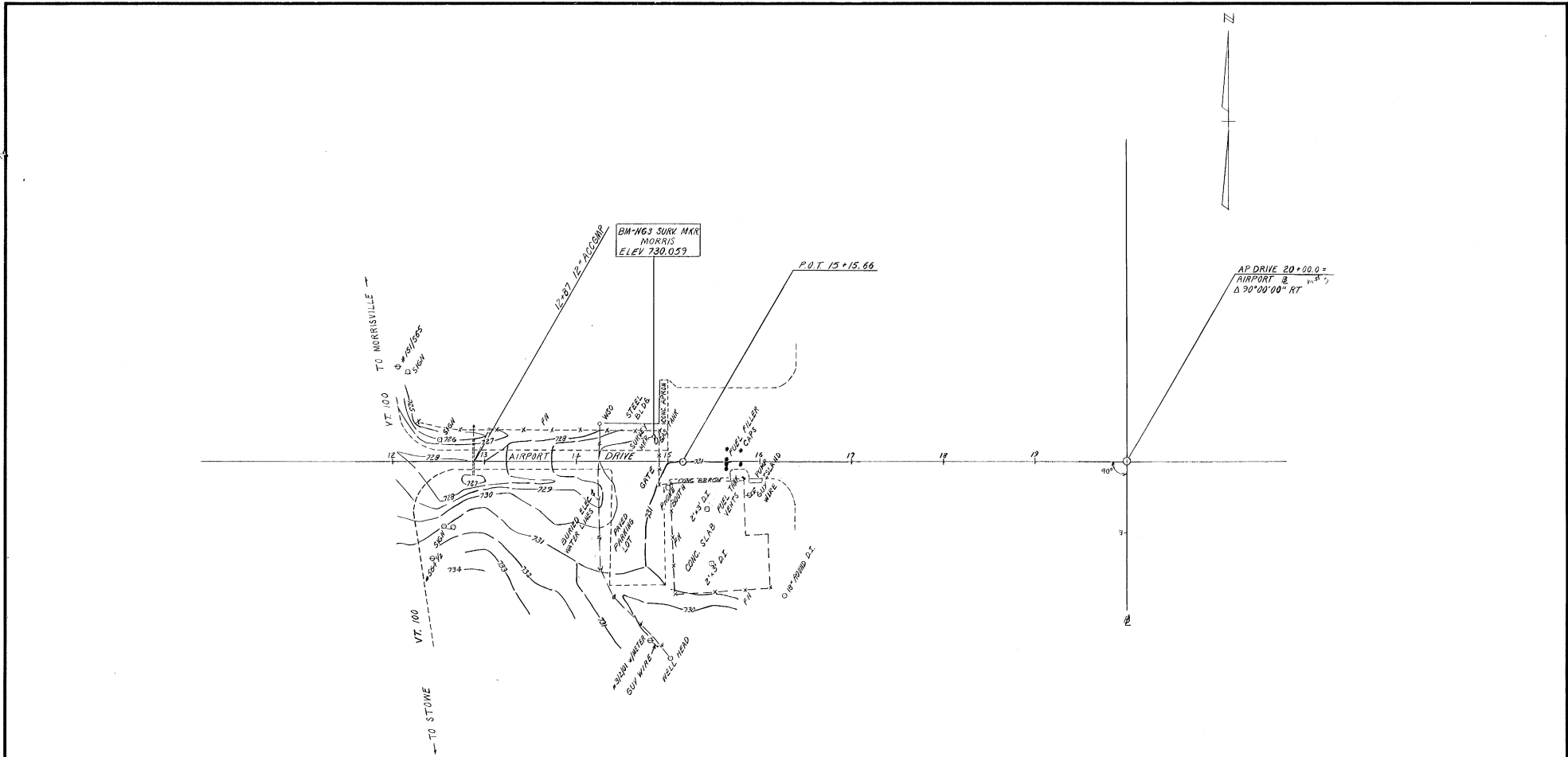
PANEL "MDP" WESTINGHOUSE TYPE Q10P, RECESS MTD 120/240 VAC 3 WIRE 3/4 225 AMP W/ 100 AMP MAIN BRK : CIRCUIT BREAKS 10,000 AIC			
CIRCUIT NUMBER	AMPS	POLES	REMARKS
1	20	1	RECEPTACLES OFFICE & RECEPT.
2	20	1	RECEPTACLES VENDING
3	20	1	RECEPTACLES SEATING & LOBBY
4	20	1	RECEPTACLES SEATING & LOBBY
5	20	1	RECEPTACLES JAN. & TOILETS
6	20	1	LIGHTING JAN. & TOILETS
7	20	1	LIGHTING VESTIBULES & VENDING
8	20	1	LIGHTING LOBBY
9	20	1	LIGHTING SEATING/OFFICE/RECEPT
10	20	1	FURNACE
11	20	2	RESISTANCE HEATERS
12	20	1	WATER HEATER
13	20	1	WELL PUMP
14	20	1	SITE LIGHTING
15-20	20	1	SPARES
21-24	-	-	-

STATE OF VERMONT
 DIVISION OF STATE BUILDINGS
 AGENCY OF ADMINISTRATION
 MONTPELIER, VERMONT

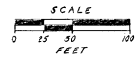
ELECTRICAL PLAN
 NEW TERMINAL BUILDING
 MORRISVILLE/STOWE STATE AIRPORT
 MORRISVILLE VERMONT

DATE: JULY 6, 1983
 SCALE: 1/4" = 1'-0"
 DRAWN BY: C.W.S.
 APPROVED BY:

REVISIONS:
 DWG. NO. E-1
 10 OF 10



DATUM
 VERTICAL NGVD 1929
 HORIZONTAL NAD 1927



SURVEYED BY CARLSON DATE JUN '82
 DRAWN BY MCCLORE DATE JUN '82
 TRACED BY MCCLORE DATE JUN '82
MORRISVILLE-STOWE
STATE AIRPORT
 PROJ. AIR No. 23-2018
 SHEET OF