

DRAINAGE AND ITEM QUANTITY SHEET

STATE OF VERMONT
DEPARTMENT OF HIGHWAYS
PROJECT NO.

APPROXIMATE SUMMARY OF QUANTITIES						DETAILED SUMMARY OF QUANTITIES						DRAINAGE STRUCTURES																								
QTY	UNIT	ITEM	PRDG.	ITEM NO.	QTY	UNIT	ITEM	QTY	UNIT	ITEM	QTY	UNIT	ITEM	QTY	UNIT	ITEM	QTY	UNIT	ITEM	QTY	UNIT	ITEM	QTY	UNIT	ITEM	QTY	UNIT	ITEM	QTY	UNIT	ITEM	REMARKS				
GRAND TOTAL	UNIT	ITEM	PRDG.	ITEM NO.	QUANTITY	UNIT	ITEM	STA.	POS.	OLD CULVERT	TYPE	ACC.G.M.P.	C.G.M.P.	C.A.A.C.P.	R.C.P.	C.R.M.	TRENCH	EXCAV.	MARKER POSTS	ASKEW	CONC.	REINF.	DI.	DEPTH	DITCHES							REMARKS				
												IN	OUT	D	L	TH	D	L	TH	D	L	TH	D	L	CL	CL	CL	CL	CL	CL	CL	CL	CL	CL		
1	LS	Clearing & Grubbing		87100																																
1	LS	Field Office, Equipment		85100																																
1	LS	Mobilization		85800																																
1	EA	L-107 Limited Wind Cone, 2 Foot		87204																																
1	EA	Round Endless Wind Cone & Segment 30 Circle		87205																																
2500	LF	L-108 Cable Trench		87206																																
8400	LF	L-108 1/2 #8, L-824 Type C 5KV		87207																																
3800	LF	L-108 1/2 #8, L-824 Type C 600V		87208																																
400	LF	L-108 3/4 #12 L-824 Type C 600V		87209																																
5800	LF	L-108 1/2 #6 L-824 Type C 600V		87210																																
4200	LF	L-108 1/2 #8 Bare Copper Bare Wire		87211																																
1	LS	L-109 Airport Transformer Vault with Equipment Complete in Place		87212																																
290	LF	L-110 Airport Underground Electrical Pipe, 4 Way, 4"		87213																																
17	EA	L-125 Med Int. RW Lts., Base Mounted		87214																																
3	EA	L-125 Med Int. Threshold Lts., Base Mounted		87215																																
17	EA	L-125 Med Int. RW Lts., Splice Mounted		87216																																
9	EA	L-125 Med Int. Threshold Lts., Splice Mounted		87217																																
22	EA	L-125 Med Int. RW Lts., Base Mounted		87218																																
4	EA	L-125 RW End Identifier Lights		87219																																
1	LS	L-125 Visual Approach Slope Indicator, 2 Box		87220																																
2	EA	L-125 Illum. RW Guidance Signs, Base Mounted		87221																																
1	LS	Airport Segmented Circle		87222																																
2	EA	Electrical Handholes		87223																																
1	EA	Rotating Beacon & Tower		87224																																
18	EA	Sealed Empty Base Mounts		87225																																

TYPE OF CONSTRUCTION:						LENGTH OF PROJECT				
STATIONS	PAVEMENT	WIDTHS	EQUATIONS	REMARKS	STA.	STA.	FEET	MILES	REMARKS	
FROM	TO		+ -							

AS BUILT PLANS

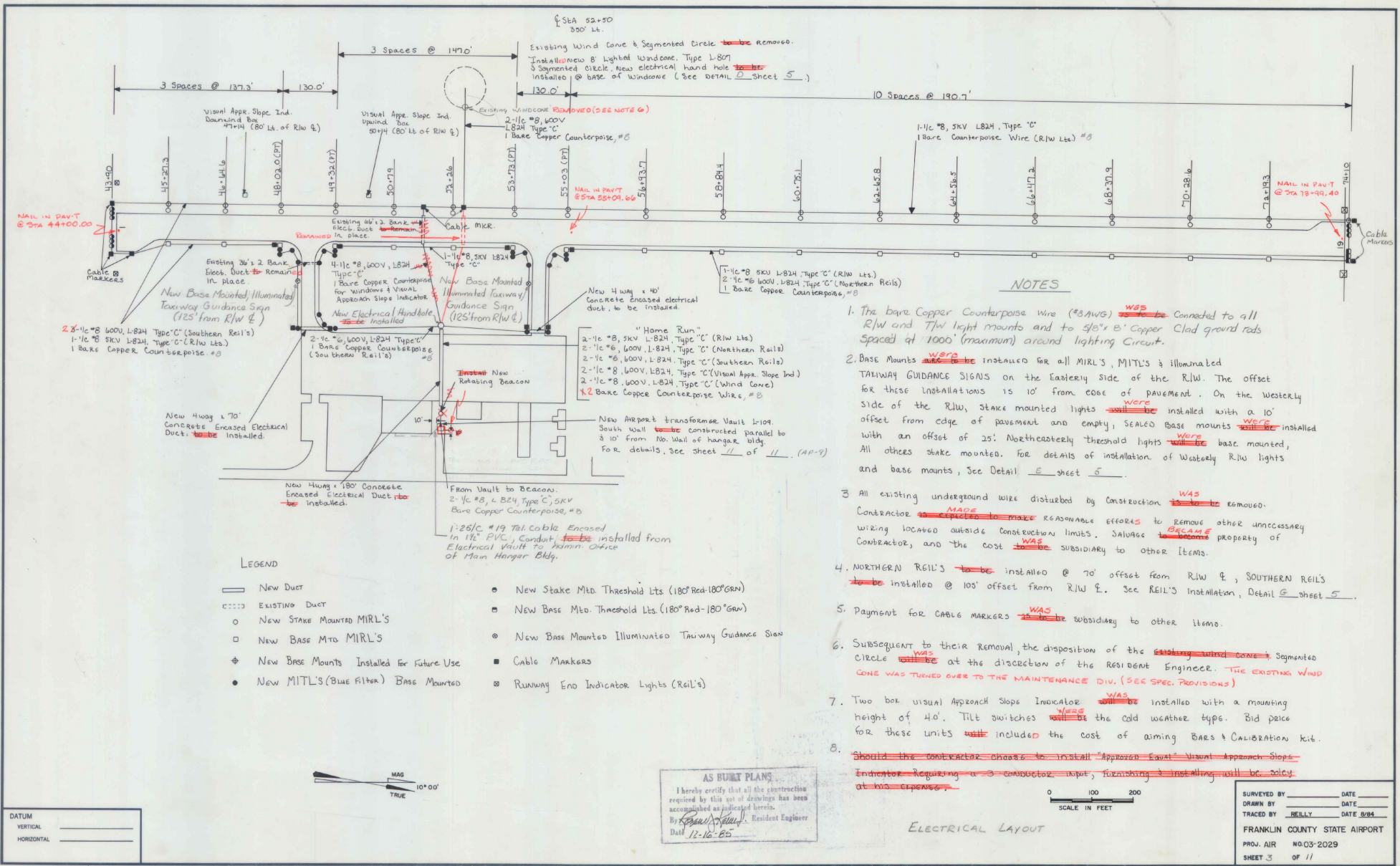
I hereby certify that all the construction required by this set of drawings has been accomplished as indicated herein.

17 FEBRUARY 1966
Resident Engineer

12-16-65

FRANKLIN COUNTY
STATE AIRPORT

PROJECT 03 NO. 2029
SHEET 2 OF 11



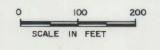
NOTES

1. The bare Copper Counterpoise wire (#8 AWG) ~~was~~ **was** connected to a 111 R/W and T/W light mounts and to 3/16" x 8" Copper Clad ground rods Spaced at 1000' (maximum) around lighting circuit.
2. Base Mounts ~~are to be~~ **were** installed for all MRL'S, MITL'S & illuminated TAXIWAY GUIDANCE SIGNS on the Eastern Side of the R/W. The offset for these installations is 10' from edge of pavement. On the Western side of the R/W, stake mounted lights ~~will be~~ **were** installed with a 10' offset from edge of pavement and empty, SEALED base mounts ~~will be~~ **were** installed with an offset of 25'. Northeastly threshold lights ~~will be~~ **were** base mounted, All other stake mounted, for details of installation of Western R/W lights and base mounts, See Detail E sheet 5.
3. All existing underground wire disturbed by construction ~~is to be~~ **was** removed. Contractor ~~is to make~~ **was made** reasonable efforts to remove other unnecessary wiring located outside construction limits. Salvage ~~is to be~~ **was** property of Contractor, and the cost ~~is to be~~ **was** subsidiary to other items.
4. NORTHERN RAIL'S ~~to be~~ installed @ 70' offset from R/W & ; SOUTHERN RAIL'S ~~to be~~ installed @ 100' offset from R/W & . See RAIL'S installation, Detail G sheet 5.
5. Payment for CABLE MARKERS ~~is to be~~ **was** subsidiary to other items.
6. Subsequent to their removal, the disposition of the ~~existing wind cone & segmented circle~~ **was** at the discretion of the Resident Engineer. ~~The existing wind cone was turned over to the maintenance div. (see spec. provisions)~~
7. Two box visual Approach Slope Indicator ~~will be~~ **was** installed with a mounting height of 40'. Tilt switches ~~will be~~ **were** the cold weather type. Bid price for these units ~~will be~~ **was** included the cost of wiring Bars & Calibration kit.
8. ~~Should the contractor choose to install "Approved Exam" Visual Approach Slope Indicator. Requiring a #3 conductor input, forming & installing will be solely at his expense.~~

LEGEND

- New Duct
- - - - EXISTING DUCT
- New Stake Mounted MRL'S
- New Stake MTD MRL'S
- ◆ New Base Mounts Installed for future Use
- New MITL'S (Blue Filter) Base Mounted
- New Stake MTD Threshold Lts (180° Red-180° GRN)
- New Base MTD Threshold Lts (180° Red-180° GRN)
- New Base Mounted Illuminated Taxiway Guidance Sign
- Cable Markers
- ⊗ Runway End Indicator Lights (REIL'S)

AS BUILT PLANS
 I hereby certify that all the construction required by this set of drawings has been accomplished as indicated herein.
 By [Signature] Resident Engineer
 Date 12-16-85

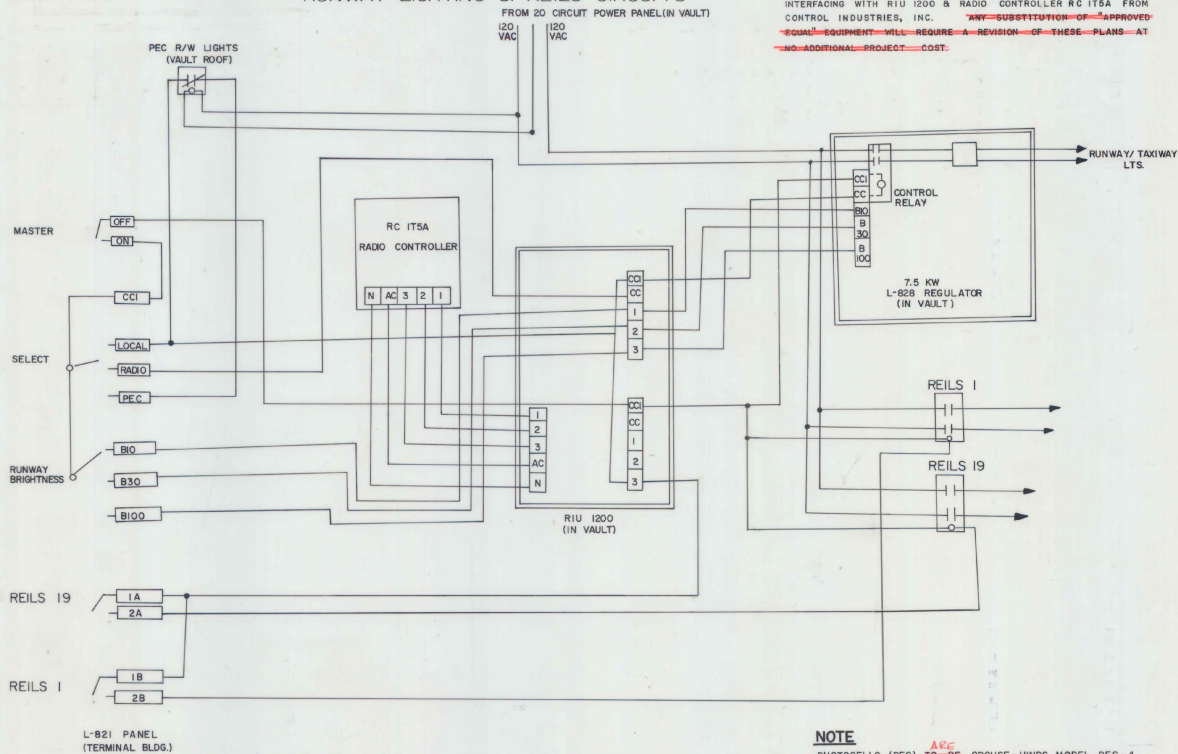


ELECTRICAL LAYOUT

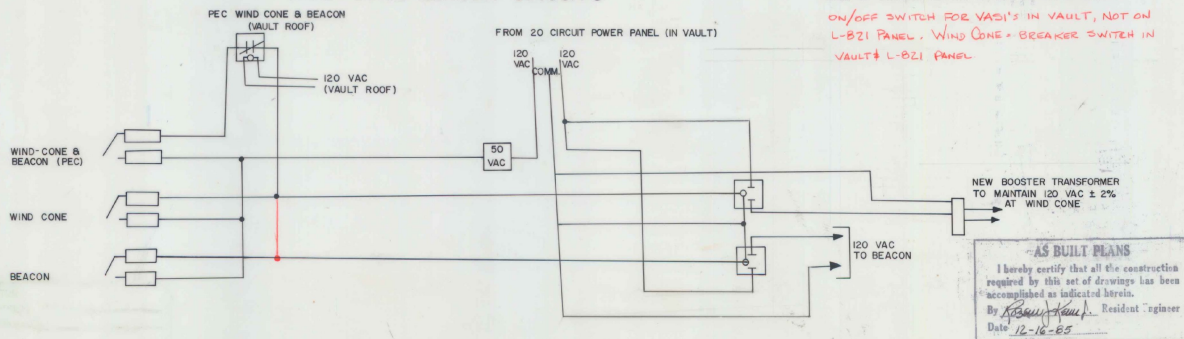
SURVEYED BY	DATE
DRAWN BY	DATE
TRACED BY	DATE
FRANKLIN COUNTY STATE AIRPORT	
PROJ. AIR	NO 03-2029
SHEET 3	OF 11

DATUM	_____
VERTICAL	_____
HORIZONTAL	_____

RUNWAY LIGHTING & REILS CIRCUITS



WIND CONE-BEACON CIRCUITS



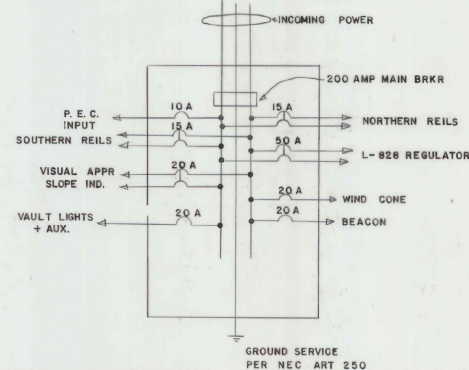
NOTE.

THE WIRING DIAGRAM SHOWN BELOW IS DESIGNED FOR USE WITH RADIO INTERFACING WITH RIU 1200 & RADIO CONTROLLER RC IT5A FROM CONTROL INDUSTRIES, INC. ANY SUBSTITUTION OF APPROVED EQUAL EQUIPMENT WILL REQUIRE A REVISION OF THESE PLANS AT NO ADDITIONAL PROJECT COST.

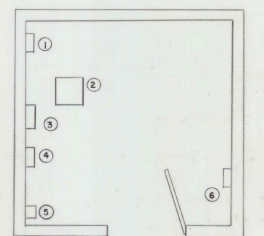
NOTE

PHOTOCELLS (PEC) ARE CROUSE-HINDS MODEL PEC-4 OR AN APPROVED EQUAL. BOTH TO BE MOUNTED ON NORTH WALL OF VAULT (EXTERIOR) APPROX. 8' ABOVE GROUND. ON/OFF SWITCH FOR VASI'S IN VAULT, NOT ON L-821 PANEL. WIND CONE-BREAKER SWITCH IN VAULT & L-821 PANEL.

DETAIL "A" NEW 20 CIRCUIT PANEL BOARD

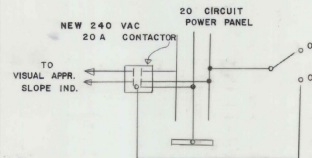


DETAIL "B" VAULT LAYOUT



- EQUIPMENT SCHEDULE
- 1 NEW 20 CIRCUIT POWER PANELBOARD FED. SPEC W-P-115A & W-C-375B.
 - 2 NEW 7.5 KW L-828 REGULATOR ~~SHOULD BE~~ HEVI-DUTY ELECTRIC, CAT. NO. 7L82800A-(3) OR APPROVED EQUAL.
 - 3 RADIO INTERFACING UNIT ~~SHOULD BE~~ RIU-1200 FROM CONTROL INDUSTRIES, INC. OR APPROVED EQUAL.
 - 4 RADIO CONTROLLER TO MEET STANDARDS SET FORTH IN AC 150/3345-49.
 - 5 MOUNT BOOSTER TRANSFORMER, RELAYS & CONTACTORS IN NEMA ENCLOSURES ON EAST WALL 4' A.F.F. BOOSTER TRANSFORMER FOR WIND CONE 120 VAC ~~SHOULD BE~~ CROUSE-HINDS CAT. NO. 44513 OR EQUAL.
 - 6 CONTROL STATION FOR VISUAL APPROACH SLOPE INDICATOR ~~SHOULD BE~~ LOCATED ON EAST WALL OF VAULT. (SEE DETAIL.)

DETAIL "C" VISUAL APPROACH SLOPE INDICATOR CONTROL STATION (VAULT)



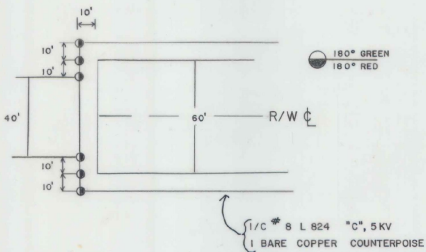
NOTES:

1. ANTENNA FOR RADIO CONTROLLER TO BE MOUNTED ON ROOF OF NEW ELECTRICAL VAULT.
2. RADIO CONTROLLER OPERATION
CIRCUIT #1 (3 CLICKS) MIRLS 10%
CIRCUIT #2 (5 CLICKS) MIRLS 30%
CIRCUIT #3 (7 CLICKS) MIRLS 100%; REILS
RADIO FREQUENCY 122.8 MHz
3. ALL WIRING TO BE IN CONDUIT OR CABLE TRAY.
4. THE CONTACTOR ~~SHOULD BE~~ LABEL EACH CABLE AND/OR CONDUCTOR AT EVERY TERMINAL POINT OR JUNCTION.
5. INTERNAL WIRING FOR 48 VDC CONTROL VOLTAGE SUPPLY AT THE POWER REGULATOR MAY VARY.
6. THE L-821 PANEL ~~SHOULD BE~~ LOCATED IN THE ADMIN. OFFICE OF THE MAIN HANGAR .48 VDC CONTROL VOLTAGE FROM VAULT ~~SHOULD BE~~ VIA 25/0 #19 TEL. CABLE ENCASED IN 1 1/2" P.V.C. CONDUIT.

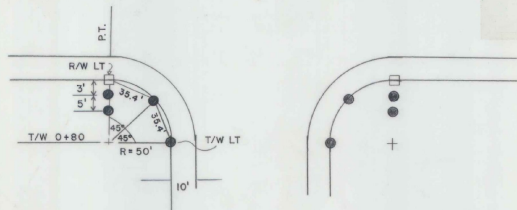
FRANKLIN COUNTY STATE AIRPORT
SCHEMATIC SHEET

SURVEYED BY _____ DATE _____
 DRAWN BY REYNOLDS DATE _____
 TRACED BY REILLY DATE _____
 PROJ. AIR NO. 03-2029
 SHEET 4 OF 11

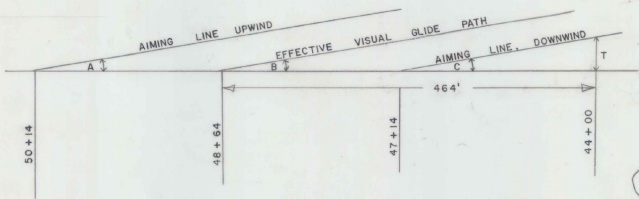
DETAIL A-1
THRESHOLD LIGHT LAYOUT
(NOT TO SCALE)



DETAIL B-1
TAXIWAY LIGHT TO DEFINE R/W INTERSECTION
(NOT TO SCALE)

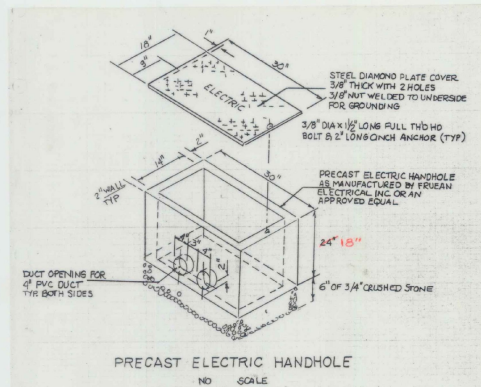


DETAIL C-1
VISUAL APPROACH SLOPE INDICATOR
SITING CRITERIA

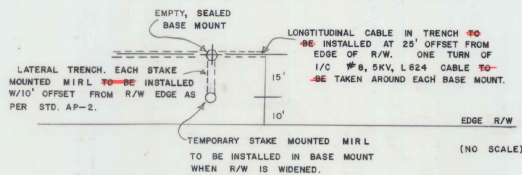


HEIGHT OF THRESHOLD - 29.0' (INCLUDES 4.0' MOUNTING HEIGHT)			
LA	3° 00'	MOUNTING HEIGHT FOR SNOW	4.0
LB	3° 00'	RUNWAY ELEV. THRESHOLD	228.25
LC	2° 30'	RUNWAY ELEV. DOWNWIND BAR	228.25
		RUNWAY ELEV. RRP	228.25
		RUNWAY ELEV. UPWIND BAR	228.25
		UPWIND VASI MOUNTING HEIGHT	232.25
		DOWNWIND VASI MOUNTING HEIGHT	232.25

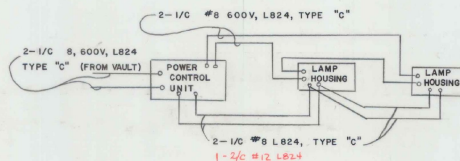
DETAIL D



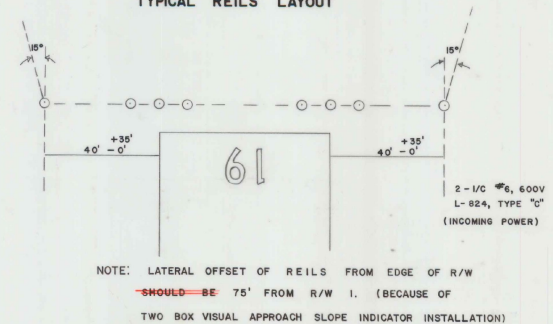
DETAIL E
PROVISION OF FUTURE BASE MOUNTS



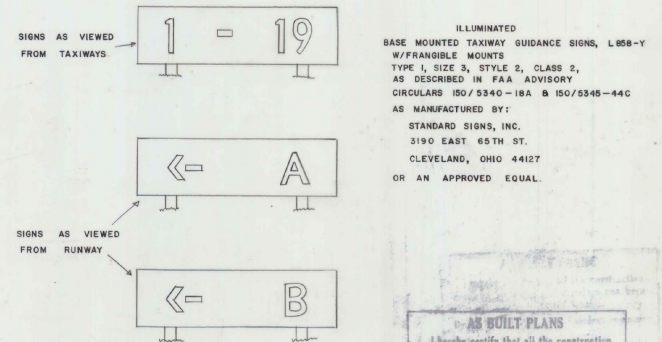
DETAIL F
VISUAL APPROACH SLOPE INDICATOR
WIRING DIAGRAM



DETAIL G
TYPICAL REILS LAYOUT



DETAIL H
BASE MOUNTED ILLUMINATED TAXIWAY GUIDANCE SIGNS

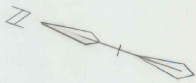


ILLUMINATED
BASE MOUNTED TAXIWAY GUIDANCE SIGNS, L858-Y
W/FRANGIBLE MOUNTS
TYPE 1, SIZE 3, STYLE 2, CLASS 2,
AS DESCRIBED IN FAA ADVISORY
CIRCULARS 150/5340-18A B 150/5345-44C
AS MANUFACTURED BY:
STANDARD SIGNS, INC.
3190 EAST 65TH ST.
CLEVELAND, OHIO 44127
OR AN APPROVED EQUAL.

AS BUILT PLANS
I hereby certify that all the construction
required by this set of drawings has been
accomplished as indicated herein.
By *[Signature]* Resident Engineer
Date 12-16-25

FRANKLIN COUNTY STATE AIRPORT
AIR 03 2029
MISCELLANEOUS LIGHTING DETAILS

DRAWN BY S. BRUNELLE DATE 8/13/24
TRACED BY J. ATKINS DATE 8/13/24
PROJ. NO.
SHEET 5 OF 11



20104 225' R/L
 Poplars, C.L.
 20103 225' L/L
 Poplars, C.L.
 20102 265' R/L
 Poplars, C.L.
 20101 225' R/L
 Poplars, C.L.
 20100 225' R/L
 Poplars, C.L.



NOTE: ITEM 20110, CLEARING & GRUBBING PLUS INDIV.
 TREES & STUMPS DELETED FROM CONTRACT
 WORK ACCOMPLISHED BY DISTRICT FORCES.

AS BUILT PLANS
 I hereby certify that all the construction
 required by this set of drawings has been
 accomplished as indicated herein.
 By Reed Resident Engineer
 Date 12-16-65

DATUM
 VERTICAL _____
 HORIZONTAL _____

FRANKLIN COUNTY
 STATE AIRPORT
 DISPOSITION OF OBSTRUCTIONS

R/W of 500' L/L
 Poplars, C.L.

SURVEYED BY REED DATE _____
 DRAWN BY ATKINS DATE _____
 TRACED BY BEUVELLE DATE _____
 PROJ. NO. _____
 SHEET 6 OF 11

FRANKLIN

VERMONT AGENCY OF TRANSPORTATION
PLANNING DIVISION