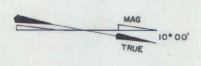


NOTES

- The bare Copper Counterpoise wire (#8 AWG) ~~was~~ **was** connected to a 11 R/W and T/W light mounts and to 3/8" x 8" Copper Clad ground rods Spaced at 1000' (maximum) around lighting circuit.
- Base Mounts ~~are to be~~ **were** installed for all MRL'S, MITL'S & illuminated TAIWAY GUIDANCE SIGNS on the Eastern Side of the R/W. The offset for these installations is 10' from edge of pavement. On the Western side of the R/W, stake mounted lights ~~will be~~ **were** installed with a 10' offset from edge of pavement and empty, SEALED base mounts ~~will be~~ **were** installed with an offset of 25'. Northeastly threshold lights ~~will be~~ **were** base mounted, All other stake mounted, for details of installation of Westernly R/W lights and base mounts, See Detail E sheet 5.
- All existing underground wire disturbed by construction ~~is to be~~ **was** removed. Contractor ~~is to~~ **was** ~~make~~ **MADE** reasonable efforts to remove other unnecessary wiring located outside construction limits. Salvage ~~is to be~~ **was** property of Contractor, and the cost ~~is to be~~ **was** subsidiary to other items.
- NORTHERN RAIL'S ~~to be~~ **to be** installed @ 70' offset from R/W & ; SOUTHERN RAIL'S ~~to be~~ **to be** installed @ 100' offset from R/W &. See RAIL'S installation, Detail G sheet 5.
- Payment for CABLE MARKERS ~~is to be~~ **was** subsidiary to other items.
- Subsequent to their removal, the disposition of the ~~existing wind cone & segmented circle~~ **was** at the discretion of the Resident Engineer. ~~The existing wind cone was turned over to the maintenance div. (see spec. provisions)~~
- Two box visual Approach Slope Indicator ~~will be~~ **was** installed with a mounting height of 40'. Tilt switches ~~will be~~ **were** the cold weather type. Bid price for these units ~~will be~~ **was** included the cost of arming Bars & Calibration kit.
- ~~Should the contractor choose to install "Approved Exam" Visual Approach Slope Indicator. Requiring a #3 conductor input, forming & installing will be solely at his expense.~~

LEGEND

- New Duct
- - - - EXISTING DUCT
- New Stake Mounted MRL'S
- New Base Mto MRL'S
- ◆ New Base Mounts Installed for future Use
- New MITL'S (Blue Filter) Base Mounted
- New Stake Mtd. Threshold Lts (180° Red-180° GRN)
- New Base Mtd. Threshold Lts. (180° Red-180° GRN)
- New Base Mounted Illuminated Taxiway Guidance Sign
- Cable Markers
- ⊗ Runway End Indicator Lights (REIL'S)



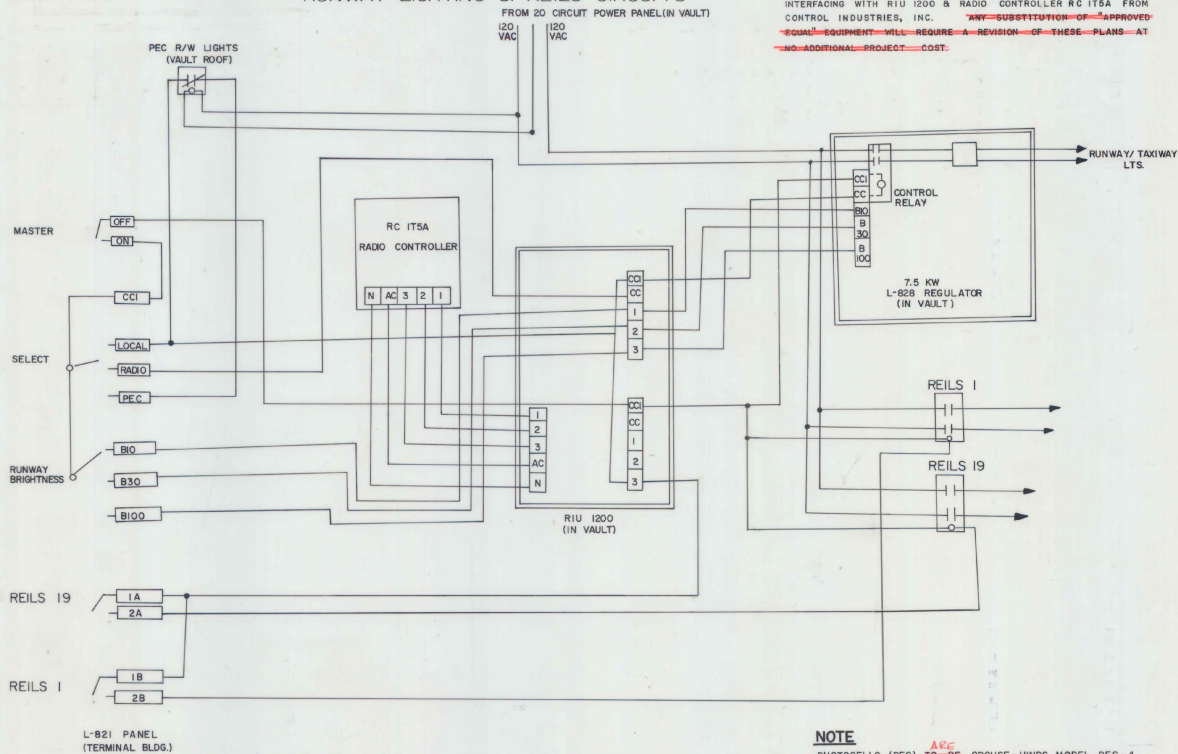
AS BUILT PLANS
 I hereby certify that all the construction required by this set of drawings has been accomplished as indicated herein.
 By [Signature] Resident Engineer
 Date 12-16-85

ELECTRICAL LAYOUT

SURVEYED BY	DATE
DRAWN BY	DATE
TRACED BY	DATE
FRANKLIN COUNTY STATE AIRPORT	
PROJ. AIR	NO 03-2029
SHEET 3	OF 11

DATUM	_____
VERTICAL	_____
HORIZONTAL	_____

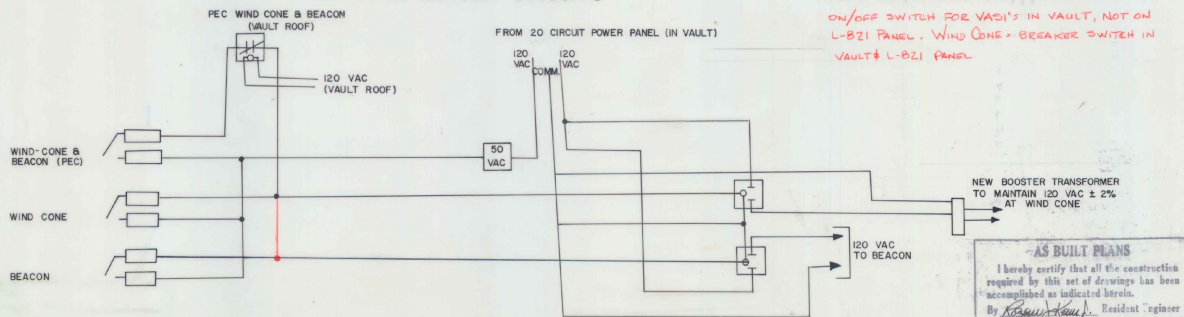
RUNWAY LIGHTING & REILS CIRCUITS



NOTE.

THE WIRING DIAGRAM SHOWN BELOW IS DESIGNED FOR USE WITH RADIO INTERFACING WITH RIU 1200 & RADIO CONTROLLER RC IT5A FROM CONTROL INDUSTRIES, INC. ~~ANY SUBSTITUTION OF APPROVED EQUAL EQUIPMENT WILL REQUIRE A REVISION OF THESE PLANS AT NO ADDITIONAL PROJECT COST.~~

WIND CONE-BEACON CIRCUITS

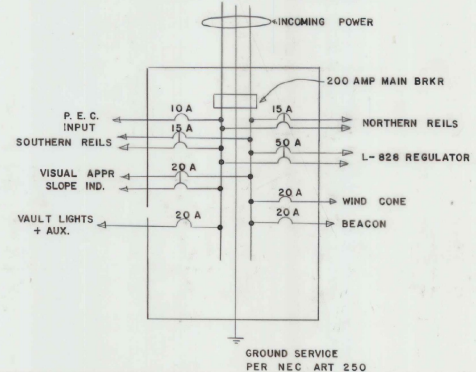


NOTE

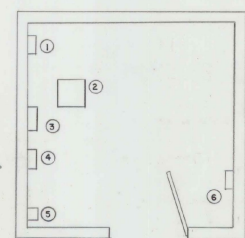
PHOTOCELLS (PEC) ~~ARE~~ ^{ARE} TO BE CROUSE-HINDS MODEL PEC-4 OR AN APPROVED EQUAL. BOTH ~~TO BE~~ ^{TO BE} MOUNTED ON NORTH WALL OF VAULT (EXTERIOR) APPROX. 8' ABOVE GROUND. ON/OFF SWITCH FOR VASI'S IN VAULT, NOT ON L-821 PANEL. WIND CONE-BREAKER SWITCH IN VAULT & L-821 PANEL.

AS BUILT PLANS
I hereby certify that all the construction required by this set of drawings has been accomplished as indicated herein.
By Robert H. Kelly, Resident Engineer
Date 12-16-85

DETAIL "A" NEW 20 CIRCUIT PANEL BOARD

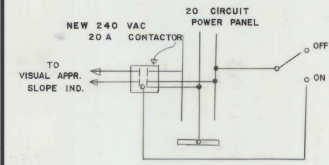


DETAIL "B" VAULT LAYOUT



- EQUIPMENT SCHEDULE**
- 1 NEW 20 CIRCUIT POWER PANELBOARD FED. SPEC W-P-115A & W-C-375B.
 - 2 NEW 7.5 KW L-828 REGULATOR ~~SHOULD BE~~ ^{IS} HEVI-DUTY ELECTRIC, CAT. NO. 7L82800A-(3) OR APPROVED EQUAL.
 - 3 RADIO INTERFACING UNIT ~~SHOULD BE~~ ^{IS} RIU-1200 FROM CONTROL INDUSTRIES, INC. OR APPROVED EQUAL.
 - 4 RADIO CONTROLLER ~~TO MEET~~ ^{IS} STANDARDS SET FORTH IN AC 150/3345-49.
 - 5 MOUNT BOOSTER TRANSFORMER, RELAYS & CONTACTORS IN NEMA ENCLOSURES ON EAST WALL 4' A.F.F. BOOSTER TRANSFORMER FOR WIND CONE 120 VAC ~~SHOULD BE~~ ^{IS} CROUSE-HINDS CAT. NO. 44513 OR EQUAL.
 - 6 CONTROL STATION FOR VISUAL APPROACH SLOPE INDICATOR ~~TO BE~~ ^{IS} LOCATED ON EAST WALL OF VAULT. (SEE DETAIL.)

DETAIL "C" VISUAL APPROACH SLOPE INDICATOR CONTROL STATION (VAULT)



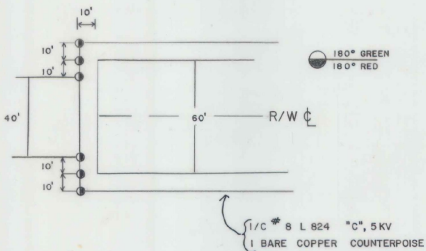
NOTES:

1. ANTENNA FOR RADIO CONTROLLER ~~TO BE~~ ^{IS} MOUNTED ON ROOF OF NEW ELECTRICAL VAULT.
2. RADIO CONTROLLER OPERATION
CIRCUIT #1 (3 CLICKS) MIRLS 10%
CIRCUIT #2 (5 CLICKS) MIRLS 30%
CIRCUIT #3 (7 CLICKS) MIRLS 100%; REILS
RADIO FREQUENCY 122.8 MHz
3. ALL WIRING ~~TO BE~~ ^{IS} IN CONDUIT OR CABLE TRAY.
4. THE CONTACTOR ~~SHALL BE~~ ^{IS} EACH CABLE AND/OR CONDUCTOR AT EVERY TERMINAL POINT OR JUNCTION.
5. INTERNAL WIRING FOR 48 VDC CONTROL VOLTAGE SUPPLY AT THE POWER REGULATOR MAY VARY.
6. THE L-821 PANEL ~~WILL BE~~ ^{IS} LOCATED IN THE ADMIN. OFFICE OF THE MAIN HANGAR .48 VDC CONTROL VOLTAGE FROM VAULT ~~WILL BE~~ ^{IS} VIA 25/0 #19 TEL. CABLE ENCASED IN 1 1/2" P.V.C. CONDUIT.

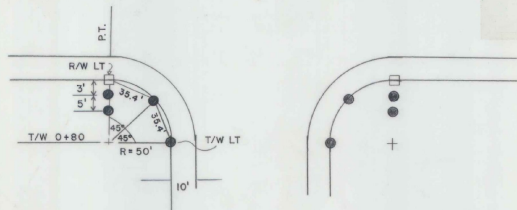
FRANKLIN COUNTY STATE AIRPORT
SCHEMATIC SHEET

SURVEYED BY _____ DATE _____
DRAWN BY BEWELLE DATE _____
TRACED BY REILLY DATE _____
PROJ. AIR NO. 03-2029
SHEET 4 OF 11

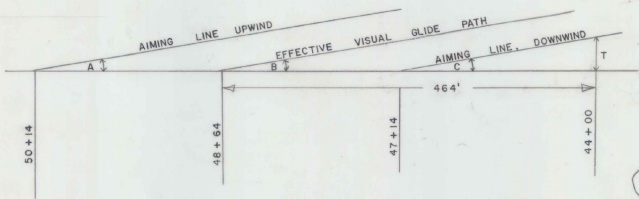
DETAIL A-1
THRESHOLD LIGHT LAYOUT
(NOT TO SCALE)



DETAIL B-1
TAXIWAY LIGHT TO DEFINE R/W INTERSECTION
(NOT TO SCALE)

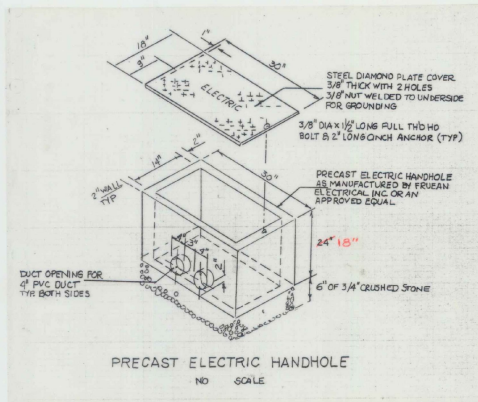


DETAIL C-1
VISUAL APPROACH SLOPE INDICATOR
SITING CRITERIA

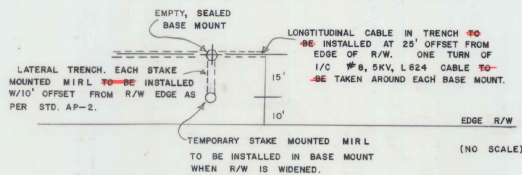


HEIGHT OF THRESHOLD - 29.0' (INCLUDES 4.0' MOUNTING HEIGHT)			
LA	3° 00'	MOUNTING HEIGHT FOR SNOW	4.0
LB	3° 00'	RUNWAY ELEV. THRESHOLD	228.25
LC	2° 30'	RUNWAY ELEV. DOWNWIND BAR	228.25
		RUNWAY ELEV. RRP	228.25
		RUNWAY ELEV. UPWIND BAR	228.25
		UPWIND VASI MOUNTING HEIGHT	232.25
		DOWNWIND VASI MOUNTING HEIGHT	232.25

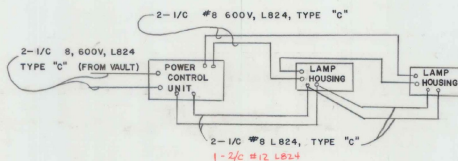
DETAIL D



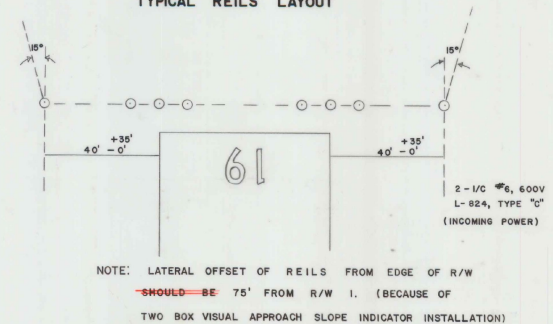
DETAIL E
PROVISION OF FUTURE BASE MOUNTS



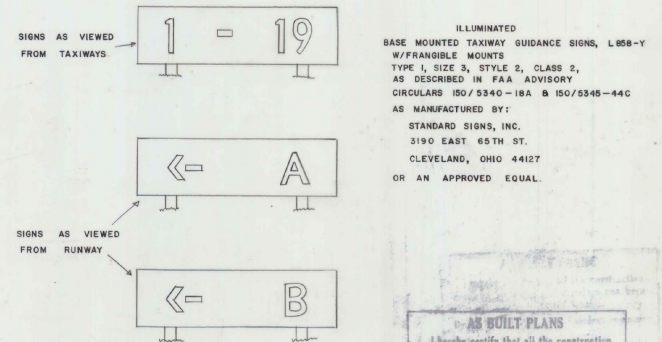
DETAIL F
VISUAL APPROACH SLOPE INDICATOR
WIRING DIAGRAM



DETAIL G
TYPICAL REILS LAYOUT



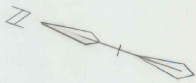
DETAIL H
BASE MOUNTED ILLUMINATED TAXIWAY GUIDANCE SIGNS



AS BUILT PLANS
I hereby certify that all the construction required by this set of drawings has been accomplished as indicated herein.
By *[Signature]*, Resident Engineer
Date 12-16-25

FRANKLIN COUNTY STATE AIRPORT
AIR 03 2029
MISCELLANEOUS LIGHTING DETAILS

DRAWN BY S. BRUNELLE DATE 8/13/24
TRACED BY J. ATKINS DATE 8/13/24
PROJ. NO.
SHEET 5 OF 11



20103 225' RL
 Poplars CLE
 20104 225' RL
 Poplars CLE
 20105 265' RL
 Poplars CLE
 20106 265' RL
 Poplars CLE
 20107 265' RL
 Poplars CLE
 20108 265' RL
 Poplars CLE
 20109 265' RL
 Poplars CLE



20110 190' RL
 Poplars CLE
 20111 200' RL
 Poplars CLE
 20112 200' RL
 Poplars CLE
 20113 200' RL
 Poplars CLE
 20114 200' RL
 Poplars CLE
 20115 200' RL
 Poplars CLE
 20116 200' RL
 Poplars CLE
 20117 200' RL
 Poplars CLE
 20118 200' RL
 Poplars CLE
 20119 200' RL
 Poplars CLE
 20120 200' RL
 Poplars CLE
 20121 200' RL
 Poplars CLE
 20122 200' RL
 Poplars CLE
 20123 200' RL
 Poplars CLE
 20124 200' RL
 Poplars CLE
 20125 200' RL
 Poplars CLE
 20126 200' RL
 Poplars CLE
 20127 200' RL
 Poplars CLE
 20128 200' RL
 Poplars CLE
 20129 200' RL
 Poplars CLE
 20130 200' RL
 Poplars CLE
 20131 200' RL
 Poplars CLE
 20132 200' RL
 Poplars CLE
 20133 200' RL
 Poplars CLE
 20134 200' RL
 Poplars CLE
 20135 200' RL
 Poplars CLE
 20136 200' RL
 Poplars CLE
 20137 200' RL
 Poplars CLE
 20138 200' RL
 Poplars CLE
 20139 200' RL
 Poplars CLE
 20140 200' RL
 Poplars CLE
 20141 200' RL
 Poplars CLE
 20142 200' RL
 Poplars CLE
 20143 200' RL
 Poplars CLE
 20144 200' RL
 Poplars CLE
 20145 200' RL
 Poplars CLE
 20146 200' RL
 Poplars CLE
 20147 200' RL
 Poplars CLE
 20148 200' RL
 Poplars CLE
 20149 200' RL
 Poplars CLE
 20150 200' RL
 Poplars CLE
 20151 200' RL
 Poplars CLE
 20152 200' RL
 Poplars CLE
 20153 200' RL
 Poplars CLE
 20154 200' RL
 Poplars CLE
 20155 200' RL
 Poplars CLE
 20156 200' RL
 Poplars CLE
 20157 200' RL
 Poplars CLE
 20158 200' RL
 Poplars CLE
 20159 200' RL
 Poplars CLE
 20160 200' RL
 Poplars CLE
 20161 200' RL
 Poplars CLE
 20162 200' RL
 Poplars CLE
 20163 200' RL
 Poplars CLE
 20164 200' RL
 Poplars CLE
 20165 200' RL
 Poplars CLE
 20166 200' RL
 Poplars CLE
 20167 200' RL
 Poplars CLE
 20168 200' RL
 Poplars CLE
 20169 200' RL
 Poplars CLE
 20170 200' RL
 Poplars CLE
 20171 200' RL
 Poplars CLE
 20172 200' RL
 Poplars CLE
 20173 200' RL
 Poplars CLE
 20174 200' RL
 Poplars CLE
 20175 200' RL
 Poplars CLE
 20176 200' RL
 Poplars CLE
 20177 200' RL
 Poplars CLE
 20178 200' RL
 Poplars CLE
 20179 200' RL
 Poplars CLE
 20180 200' RL
 Poplars CLE
 20181 200' RL
 Poplars CLE
 20182 200' RL
 Poplars CLE
 20183 200' RL
 Poplars CLE
 20184 200' RL
 Poplars CLE
 20185 200' RL
 Poplars CLE
 20186 200' RL
 Poplars CLE
 20187 200' RL
 Poplars CLE
 20188 200' RL
 Poplars CLE
 20189 200' RL
 Poplars CLE
 20190 200' RL
 Poplars CLE
 20191 200' RL
 Poplars CLE
 20192 200' RL
 Poplars CLE
 20193 200' RL
 Poplars CLE
 20194 200' RL
 Poplars CLE
 20195 200' RL
 Poplars CLE
 20196 200' RL
 Poplars CLE
 20197 200' RL
 Poplars CLE
 20198 200' RL
 Poplars CLE
 20199 200' RL
 Poplars CLE
 20200 200' RL
 Poplars CLE

NOTE: ITEM 20110. CLEARING & GRUBBING PLUS INDIV.
 TREES & STUMPS DELETED FROM CONTRACT
 WORK ACCOMPLISHED BY DISTRICT FORCES.

AS BUILT PLANS
 I hereby certify that all the construction
 required by this set of drawings has been
 accomplished as indicated herein.
 By [Signature] Resident Engineer
 Date 12-16-65

FRANKLIN COUNTY
 STATE AIRPORT
 DISPOSITION OF OBSTRUCTIONS

DATUM
 VERTICAL _____
 HORIZONTAL _____

SURVEYED BY REED DATE _____
 DRAWN BY ATKINS DATE _____
 TRACED BY BEUVELLE DATE _____
 PROJ. NO. _____
 SHEET 6 OF 11

20150 200' RL
 Poplars CLE

FRANKLIN

VERMONT AGENCY OF TRANSPORTATION
PLANNING DIVISION