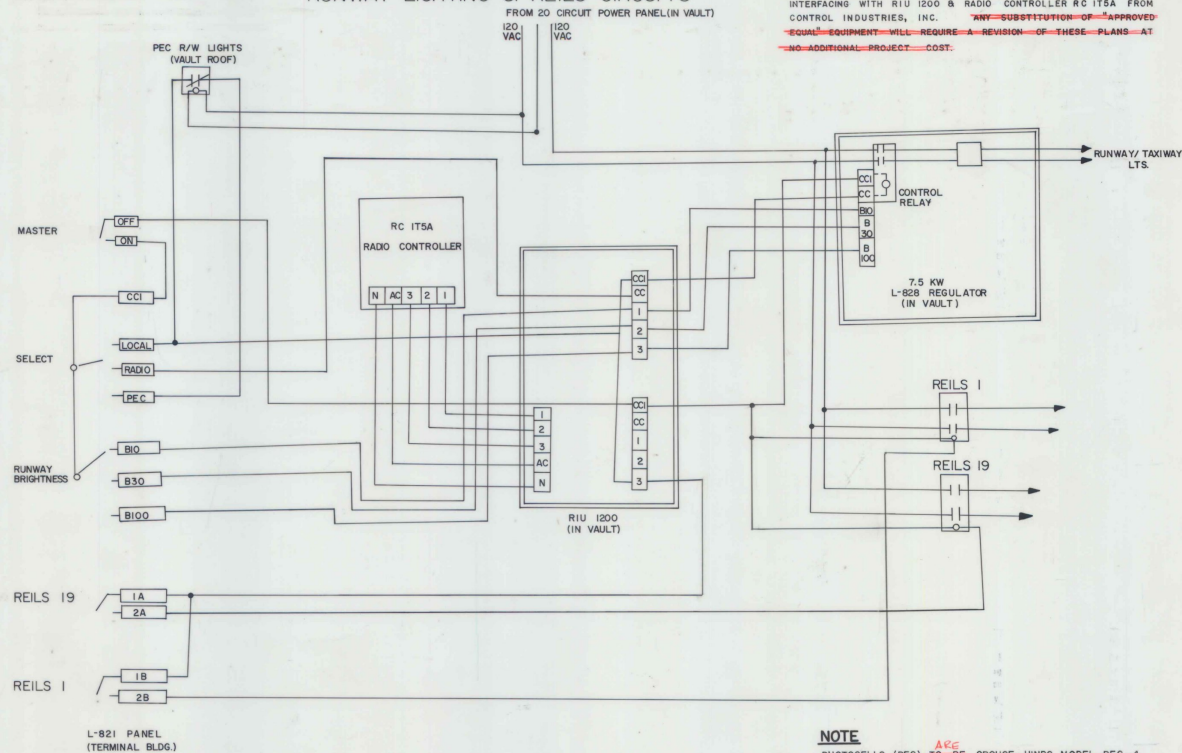


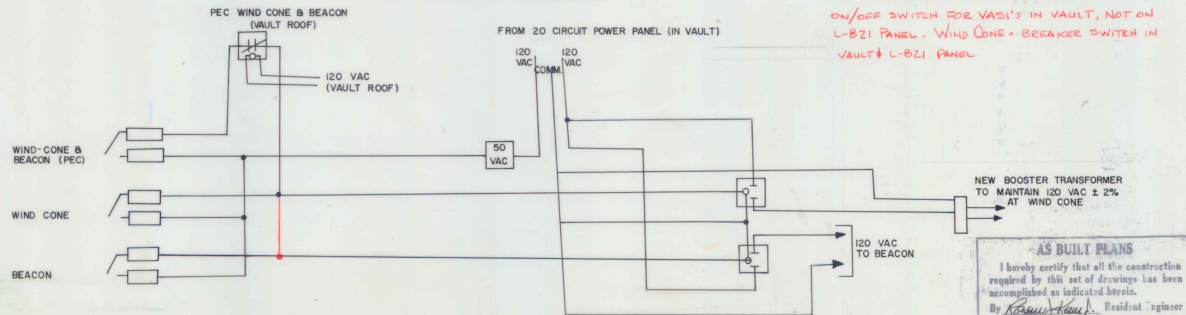
RUNWAY LIGHTING & REILS CIRCUITS



NOTE.

THE WIRING DIAGRAM SHOWN BELOW IS DESIGNED FOR USE WITH RADIO INTERFACING WITH RIU 1200 & RADIO CONTROLLER RC IT5A FROM CONTROL INDUSTRIES, INC. ~~ANY SUBSTITUTION OF APPROVED EQUAL EQUIPMENT WILL REQUIRE A REVISION OF THESE PLANS AT NO ADDITIONAL PROJECT COST.~~

WIND CONE-BEACON CIRCUITS

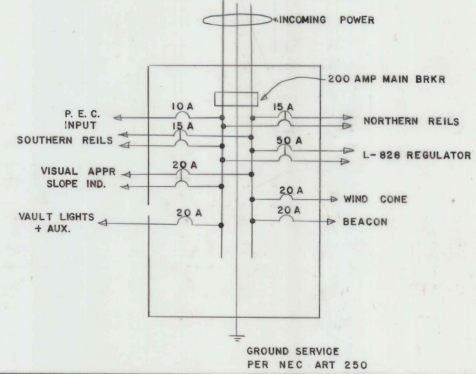


NOTE

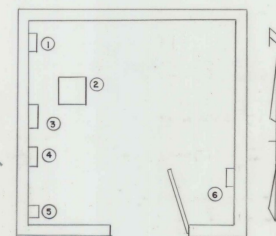
PHOTOCELLS (PEC) ^{ARE} TO BE CRUSE-HINDS MODEL PEC-4 OR AN APPROVED EQUAL. BOTH TO BE MOUNTED ON NORTH WALL OF VAULT (EXTERIOR) APPROX. 8' ABOVE GROUND. ON/OFF SWITCH FOR VASI'S IN VAULT, NOT ON L-821 PANEL. WIND CONE - BREAKER SWITCH IN VAULT & L-821 PANEL

AS BUILT PLANS
I hereby certify that all the construction required by this set of drawings has been accomplished as indicated herein.
By *Robert Kelly*, Resident Engineer
Date *12-16-85*

DETAIL "A" NEW 20 CIRCUIT PANEL BOARD



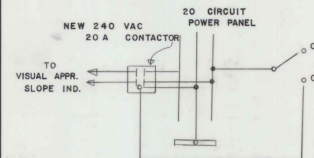
DETAIL "B" VAULT LAYOUT



EQUIPMENT SCHEDULE

- 1 NEW 20 CIRCUIT POWER PANELBOARD FED. SPEC. W-P-115A & W-C-375B.
- 2 NEW 7.5 KW L-828 REGULATOR ^{IS} SHOULD BE HEVI-DUTY ELECTRIC, CAT NO. 7L8280DA- (3) OR APPROVED EQUAL.
- 3 RADIO INTERFACING UNIT ^{IS} SHOULD BE RIU-1200 FROM CONTROL INDUSTRIES, INC. OR APPROVED EQUAL.
- 4 RADIO CONTROLLER TO MEET STANDARDS SET FORTH IN AC 150/5345-49.
- 5 MOUNT BOOSTER TRANSFORMER, RELAYS & CONTACTORS IN NEMA ENCLOSURES ON EAST WALL 4' A.F.F. BOOSTER TRANSFORMER FOR WIND CONE 120 VAC ^{IS} SHOULD BE CRUSE-HINDS CAT. NO. 44513 OR EQUAL.
- 6 CONTROL STATION FOR VISUAL APPROACH SLOPE INDICATOR ^{IS} TO BE LOCATED ON EAST WALL OF VAULT. (SEE DETAIL)

DETAIL "C" VISUAL APPROACH SLOPE INDICATOR CONTROL STATION (VAULT)



NOTES:

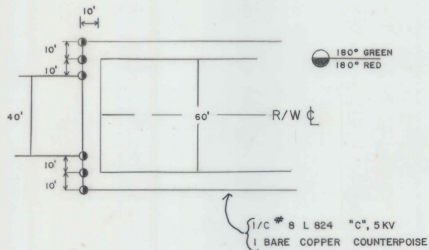
1. ANTENNA FOR RADIO CONTROLLER TO BE MOUNTED ON ROOF OF NEW ELECTRICAL VAULT.
2. RADIO CONTROLLER OPERATION
CIRCUIT #1 (3 CLICKS) MIRLS 10%
CIRCUIT #2 (5 CLICKS) MIRLS 30%
CIRCUIT #3 (7 CLICKS) MIRLS 100%; REILS RADIO FREQUENCY 122.8 MHz
3. ALL WIRING TO BE IN CONDUIT OR CABLE TRAY.
4. THE CONTACTOR ^{IS} SHALL BE LABEL EACH CABLE AND/OR CONDUCTOR AT EVERY TERMINAL POINT OR JUNCTION.
5. INTERNAL WIRING FOR 48 VDC CONTROL VOLTAGE SUPPLY AT THE POWER REGULATOR MAY VARY.
6. THE L-821 PANEL ~~IS~~ ^{IS} TO BE LOCATED IN THE ADMIN. OFFICE OF THE MAIN HANGAR. 48 VDC CONTROL VOLTAGE FROM VAULT ~~IS~~ ^{IS} TO BE VIA 25C #19 TEL. CABLE ENCASED IN 1 1/2" PVC CONDUIT.

FRANKLIN COUNTY STATE AIRPORT
SCHEMATIC SHEET

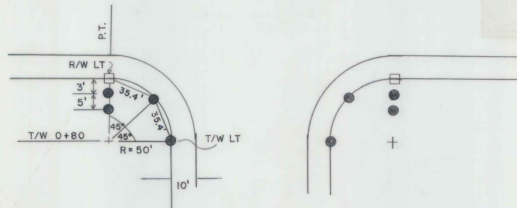
SURVEYED BY _____ DATE _____
DRAWN BY *BRUNELLE* DATE _____
TRACED BY *REILLY* DATE _____

PROJ. AIR NO. 03-2029
SHEET 4 OF 11

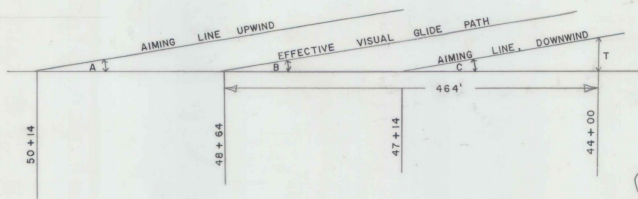
DETAIL A-1
THRESHOLD LIGHT LAYOUT
(NOT TO SCALE)



DETAIL B-1
TAXIWAY LIGHT TO DEFINE R/W INTERSECTION
(NOT TO SCALE)



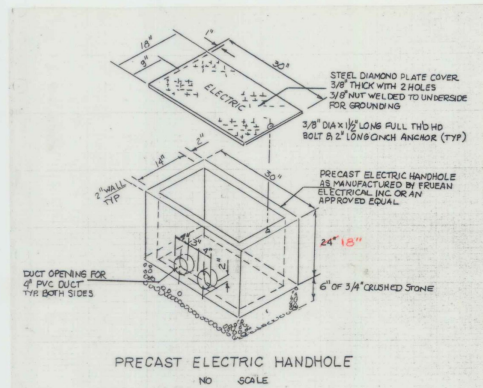
DETAIL C-1
VISUAL APPROACH SLOPE INDICATOR
SITING CRITERIA



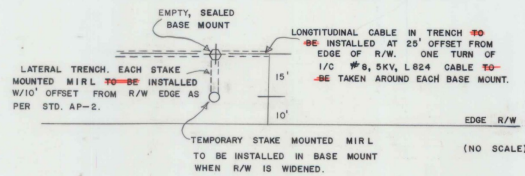
HEIGHT OF THRESHOLD - 29.0' (INCLUDES 4.0' MOUNTING HEIGHT)

LA	3° 00'	MOUNTING HEIGHT FOR SNOW	4.0
LB	3° 00'	RUNWAY ELEV. THRESHOLD	228.25
LC	2° 30'	RUNWAY ELEV. DOWNWIND BAR	228.25
		RUNWAY ELEV. RRP	228.25
		RUNWAY ELEV. UPWIND BAR	228.25
		UPWIND VASI MOUNTING HEIGHT	232.25
		DOWNWIND VASI MOUNTING HEIGHT	232.25

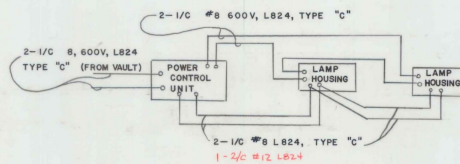
DETAIL D



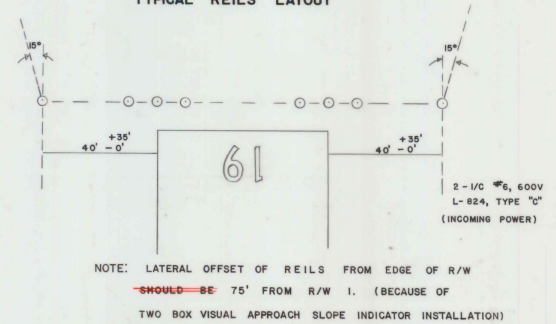
DETAIL E
PROVISION OF FUTURE BASE MOUNTS



DETAIL F
VISUAL APPROACH SLOPE INDICATOR
WIRING DIAGRAM

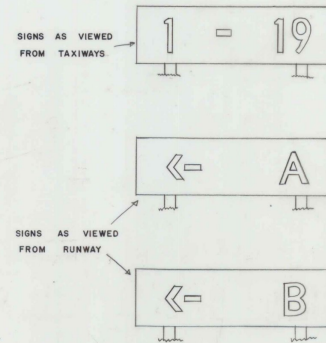


DETAIL G
TYPICAL REILS LAYOUT



NOTE: LATERAL OFFSET OF REILS FROM EDGE OF R/W
~~SHOULD BE~~ 75' FROM R/W I. (BECAUSE OF
TWO BOX VISUAL APPROACH SLOPE INDICATOR INSTALLATION)

DETAIL H
BASE MOUNTED ILLUMINATED TAXIWAY GUIDANCE SIGNS



ILLUMINATED
BASE MOUNTED TAXIWAY GUIDANCE SIGNS, L858-Y
W/FRANGIBLE MOUNTS
TYPE 1, SIZE 3, STYLE 2, CLASS 2,
AS DESCRIBED IN FAA ADVISORY
CIRCULARS 150/5340-18A & 150/5345-44C
AS MANUFACTURED BY:
STANDARD SIGNS, INC.
3190 EAST 65TH ST.
CLEVELAND, OHIO 44127
OR AN APPROVED EQUAL.

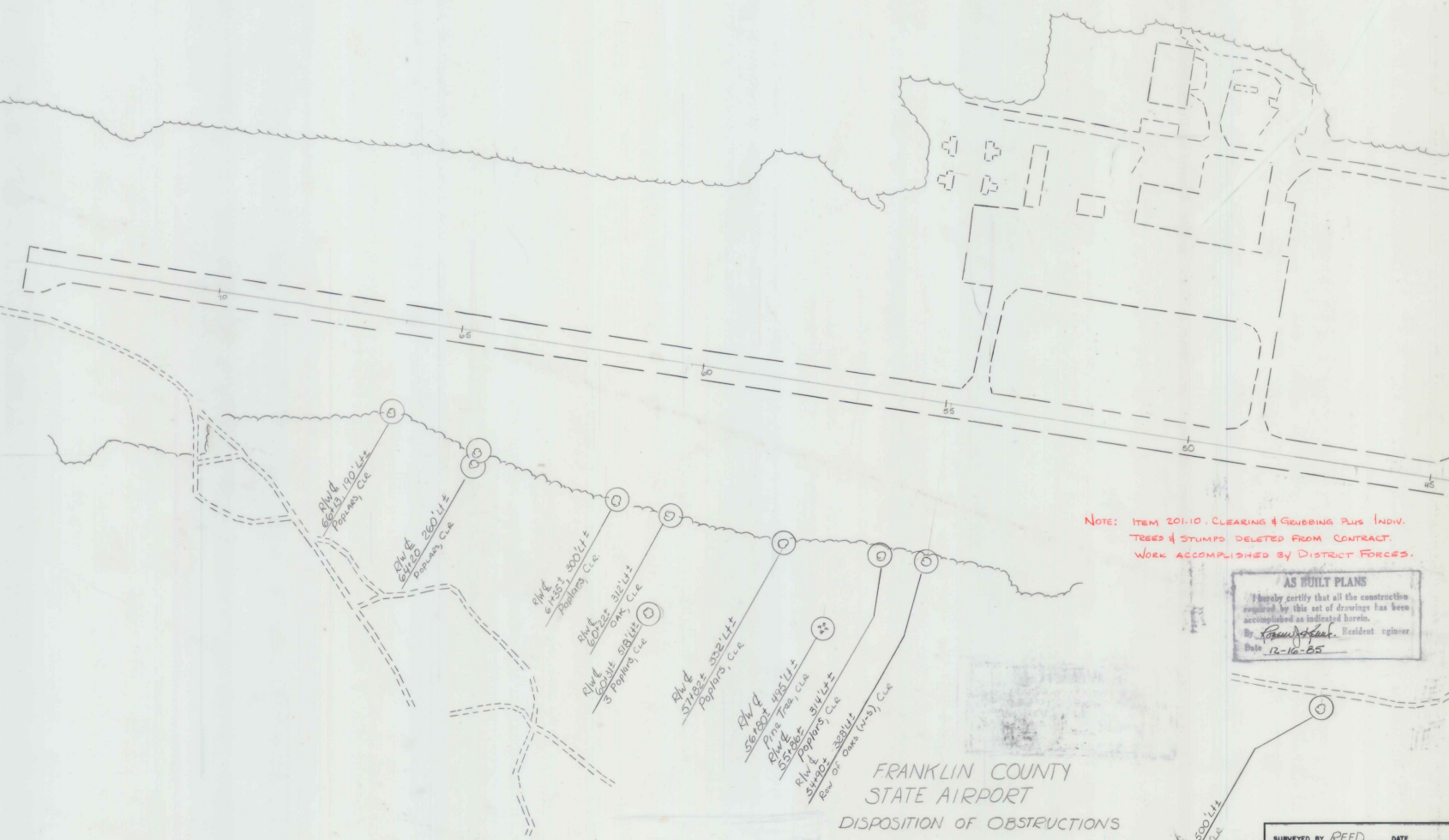
AS BUILT PLANS
I hereby certify that all the construction
required by this set of drawings has been
accomplished as indicated herein.
By *Kenneth J. Hines*, Resident Engineer
Date *12-16-25*

FRANKLIN COUNTY STATE AIRPORT
AIR 03 2029
MISCELLANEOUS LIGHTING DETAILS

DRAWN BY R. BRINELLE DATE 8/12/24
TRACED BY J. ATKINS DATE 8/13/24
PROJ. NO.
SHEET 5 OF 11



201004 225' RL ±
 Poplars, C.L.
 201003 225' RL ±
 Poplars, C.L.
 201002 225' RL ±
 Poplars, C.L.
 201001 225' RL ±
 Poplars, C.L.



NOTE: ITEM 20110. CLEARING & GRUBBING PLUS INDIV.
 TREES & STUMPS DELETED FROM CONTRACT
 WORK ACCOMPLISHED BY DISTRICT FORCES.

AS BUILT PLANS
 I hereby certify that all the construction
 required by this set of drawings has been
 accomplished as indicated herein.
 By Paul J. Reed, Resident Engineer
 Date 12-16-65

FRANKLIN COUNTY
 STATE AIRPORT
 DISPOSITION OF OBSTRUCTIONS

DATUM
 VERTICAL _____
 HORIZONTAL _____

SURVEYED BY REED DATE _____
 DRAWN BY ATKINS DATE _____
 TRACED BY BRUNELLE DATE _____
 PROJ. NO. _____
 SHEET 6 OF 11

RLW E
 500' LL ±
 Poplars, C.L.

FRANKLIN

VERMONT AGENCY OF TRANSPORTATION
PLANNING DIVISION