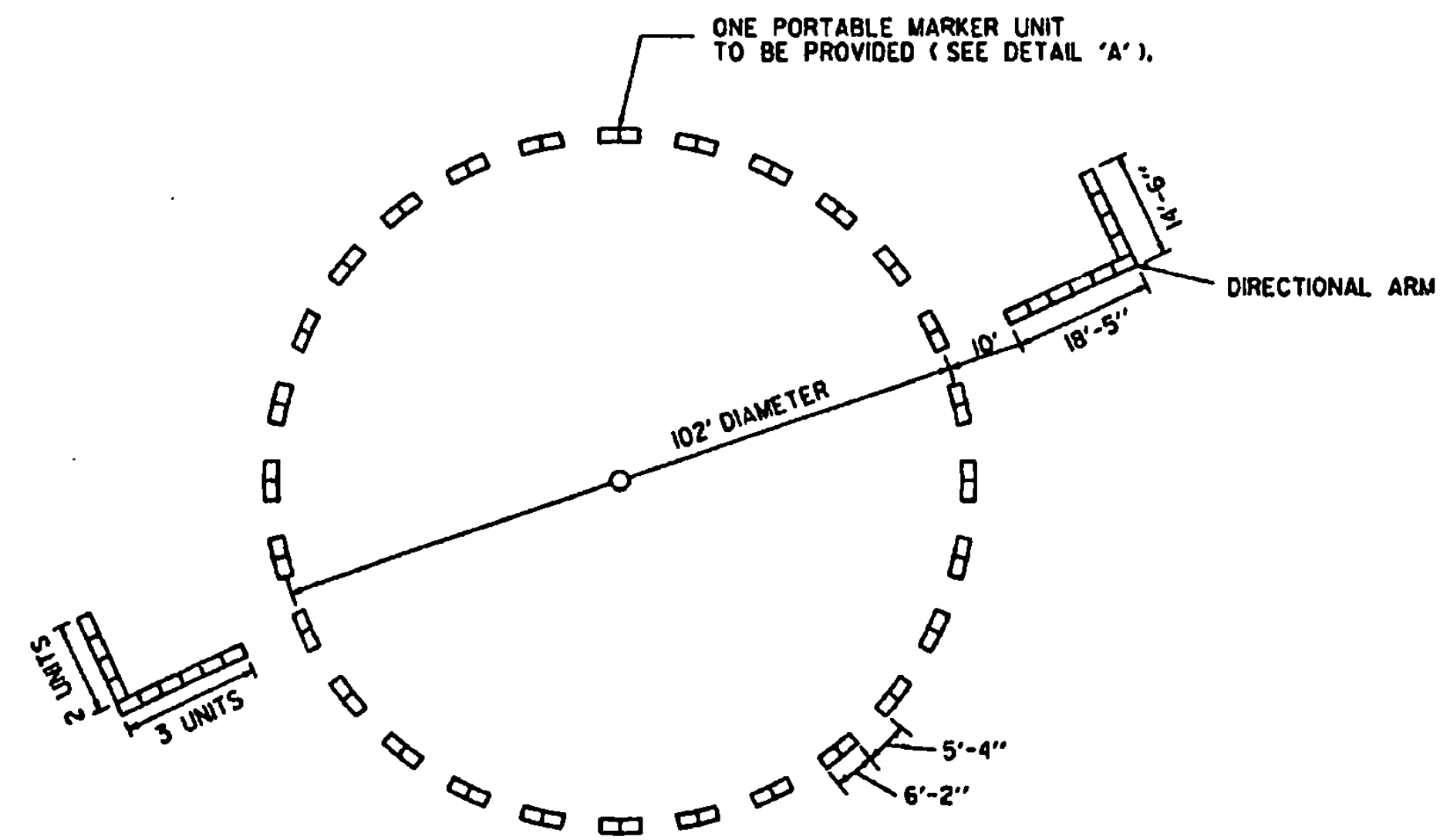
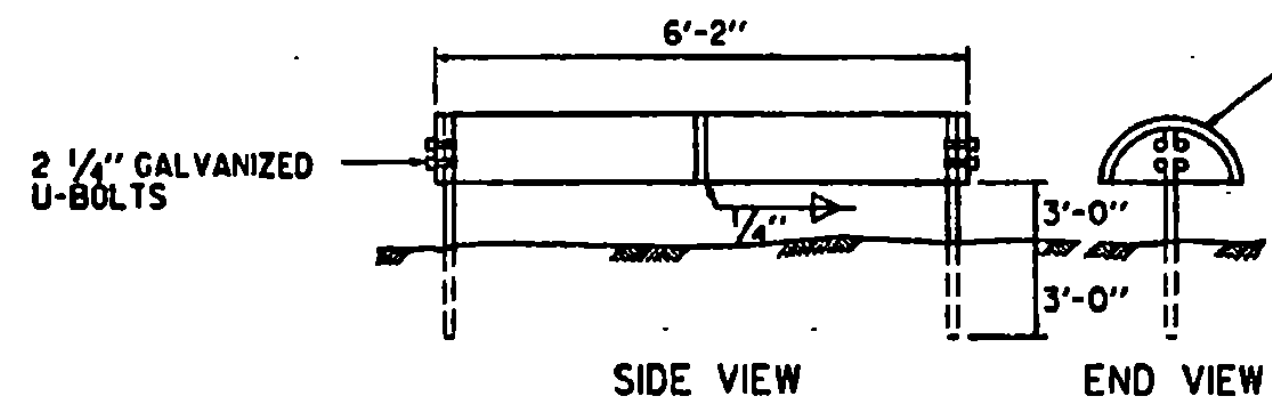
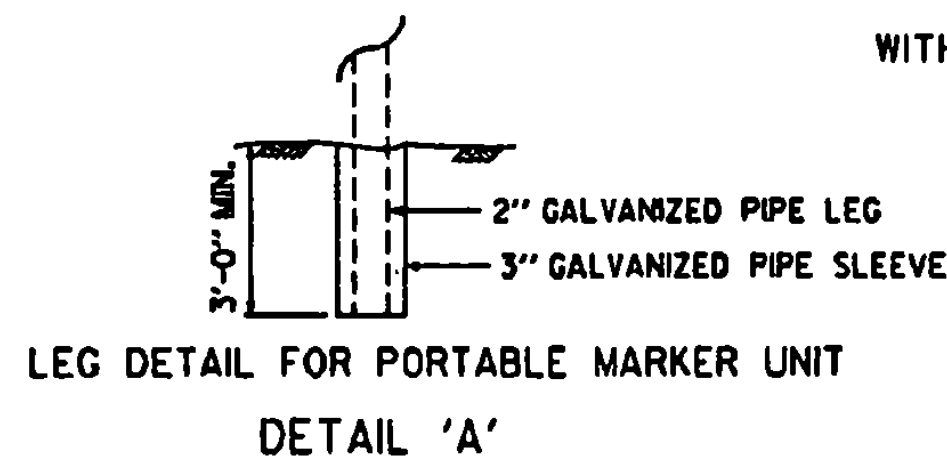


**NOTES**

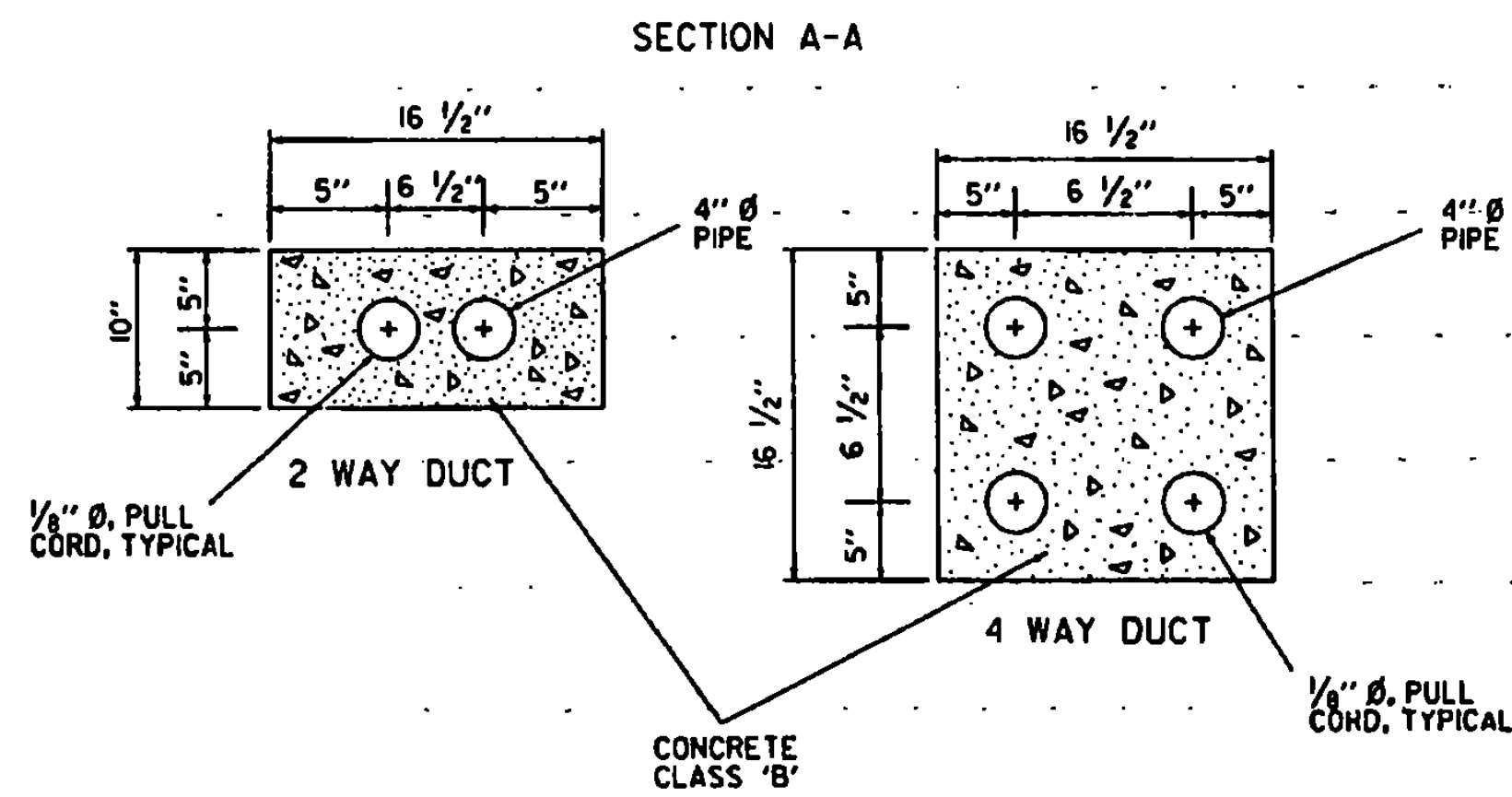
1. THE LOCATION OF THE PORTABLE MARKER UNIT SHALL BE AS ORDERED BY THE ENGINEER.
2. DIRECTIONAL ARMS ARE INSTALLED ONLY ON AIRPORTS WITH A NON-STANDARD TRAFFIC PATTERN (RIGHT-HAND PATTERN). WHEN INSTALLED, DIRECTIONAL ARMS WILL BE MAGNETICALLY ORIENTED TO THE RUNWAY AND WILL SHOW TRAFFIC PATTERN ON EACH RUNWAY.



SEGMENTED CIRCLE LAYOUT WITH DIRECTIONAL ARMS

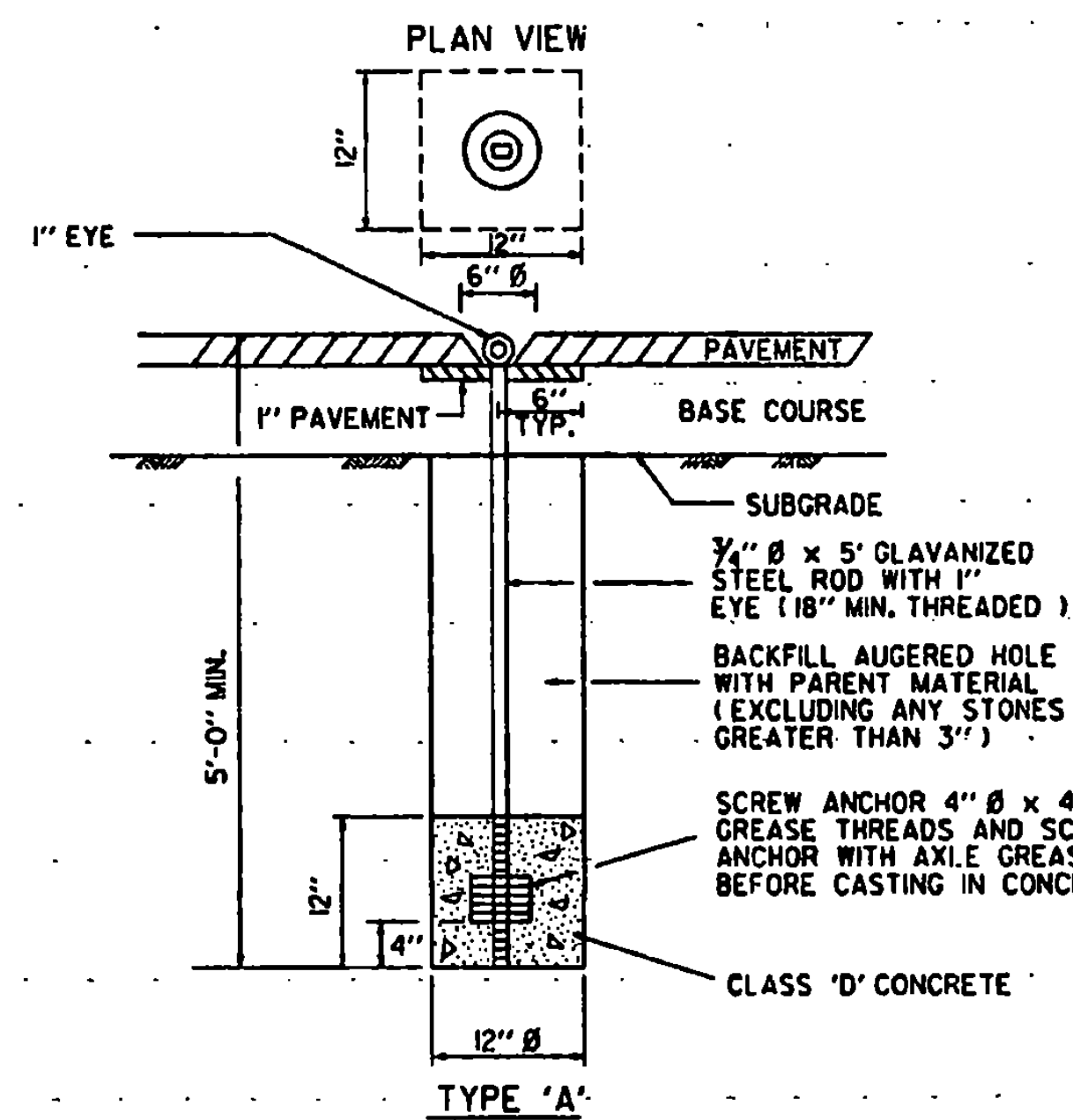


SEGMENTED CIRCLE MARKER UNIT

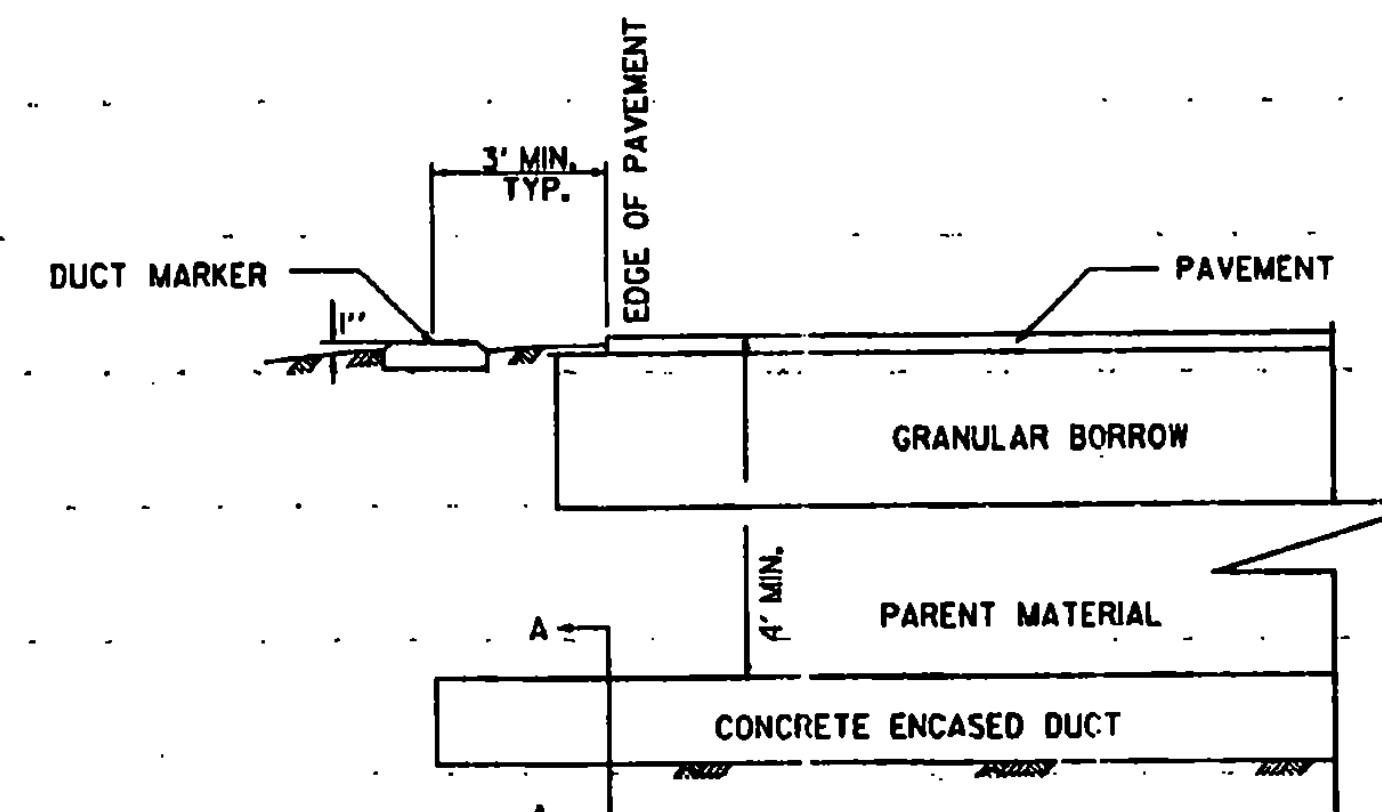


ALL DUCTS, EXCEPT STEEL CONDUIT, INSTALLED UNDER RUNWAYS, TAXIWAYS, APRONS, AND OTHER PAVED AREAS SHALL BE ENCASED IN A CONCRETE ENVELOPE

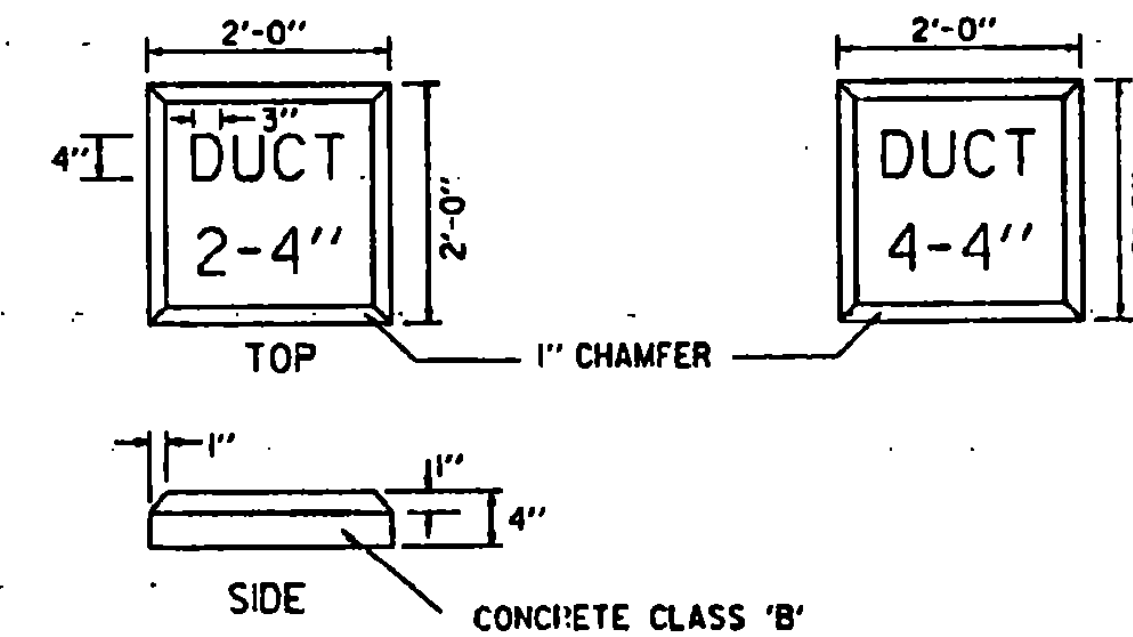
SEE STANDARD AP-2 FOR DIRECT BURIAL CABLE DETAILS.



AIRCRAFT TIE DOWN ANCHOR

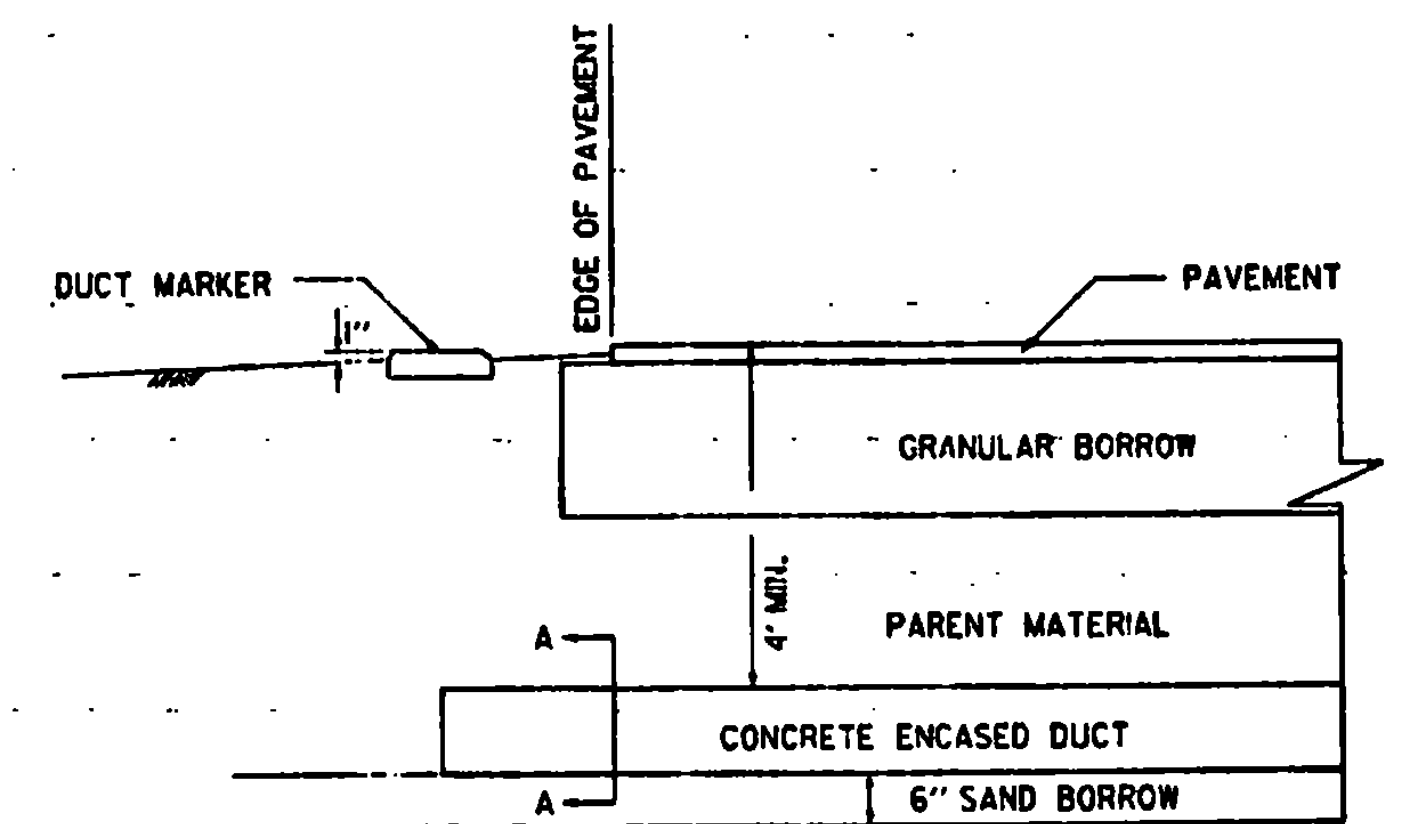


AIRPORT UNDERGROUND ELECTRICAL DUCT (IN EARTH)



DUCT MARKERS

- NOTES**
1. LETTERING ON DUCT MARKERS TO BE EMBOSSED, 'V' CUT, 1/2" DEEP.
  2. HAND LETTERING NOT ALLOWED.



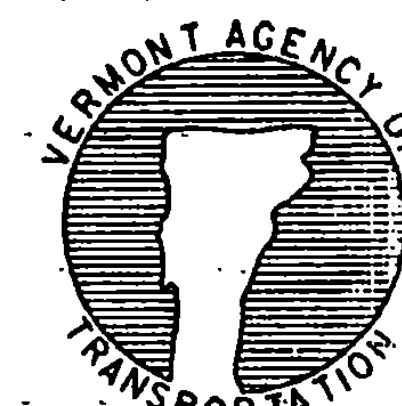
AIRPORT UNDERGROUND ELECTRICAL DUCT (IN ROCK)

REVISIONS AND CORRECTIONS  
 DEC. 15, 1981 - ORIGINAL APPROVAL DATE  
 MAR. 5, 1990 - SHEET UPDATED  
 JUNE 1, 1994 - REISSUED, WITHOUT CHANGE, UNDER NEW SIGNATURES.

APPROVED  
  
 DIRECTOR OF RAIL, AIR AND PUBLIC TRANSIT

APPROVED FOR THIS PROJECT AND/OR DESIGN IMPLEMENTATION. FINAL APPROVAL PENDING.

MISCELLANEOUS AIRPORT DETAILS



STANDARD  
 AP-3