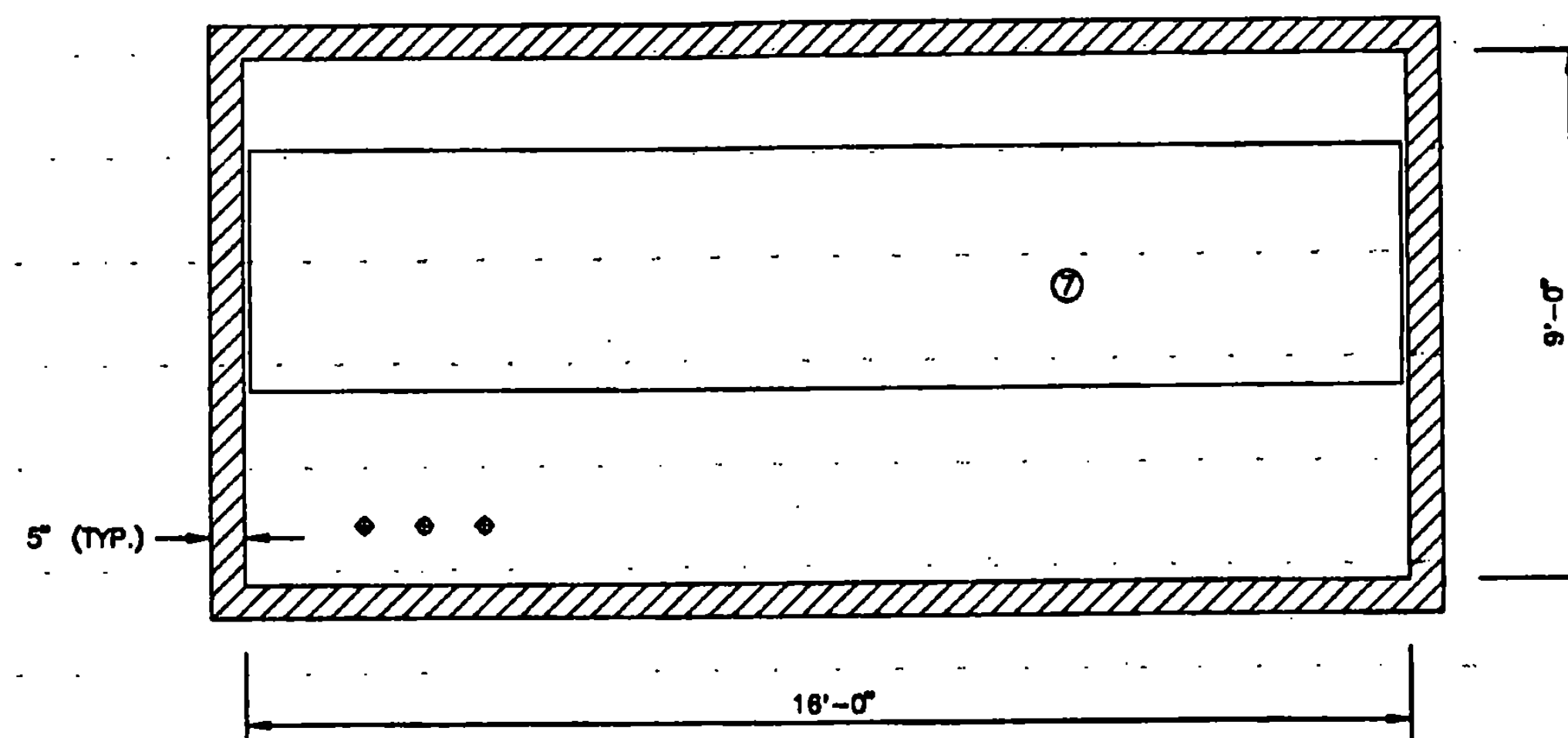
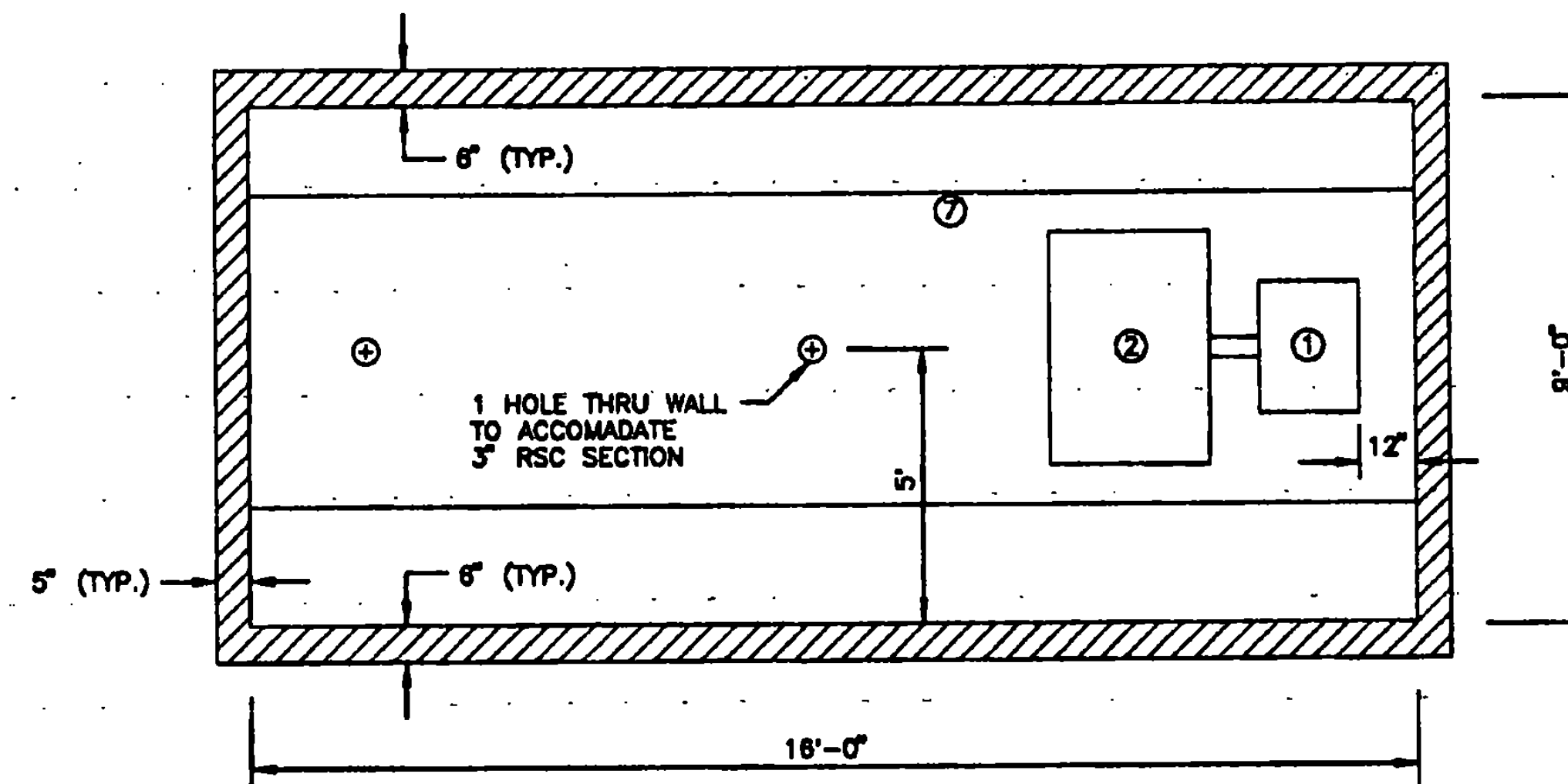


**EXISTING LOCALIZER BLDG. EQUIPMENT LAYOUT**  
SCALE: NONE



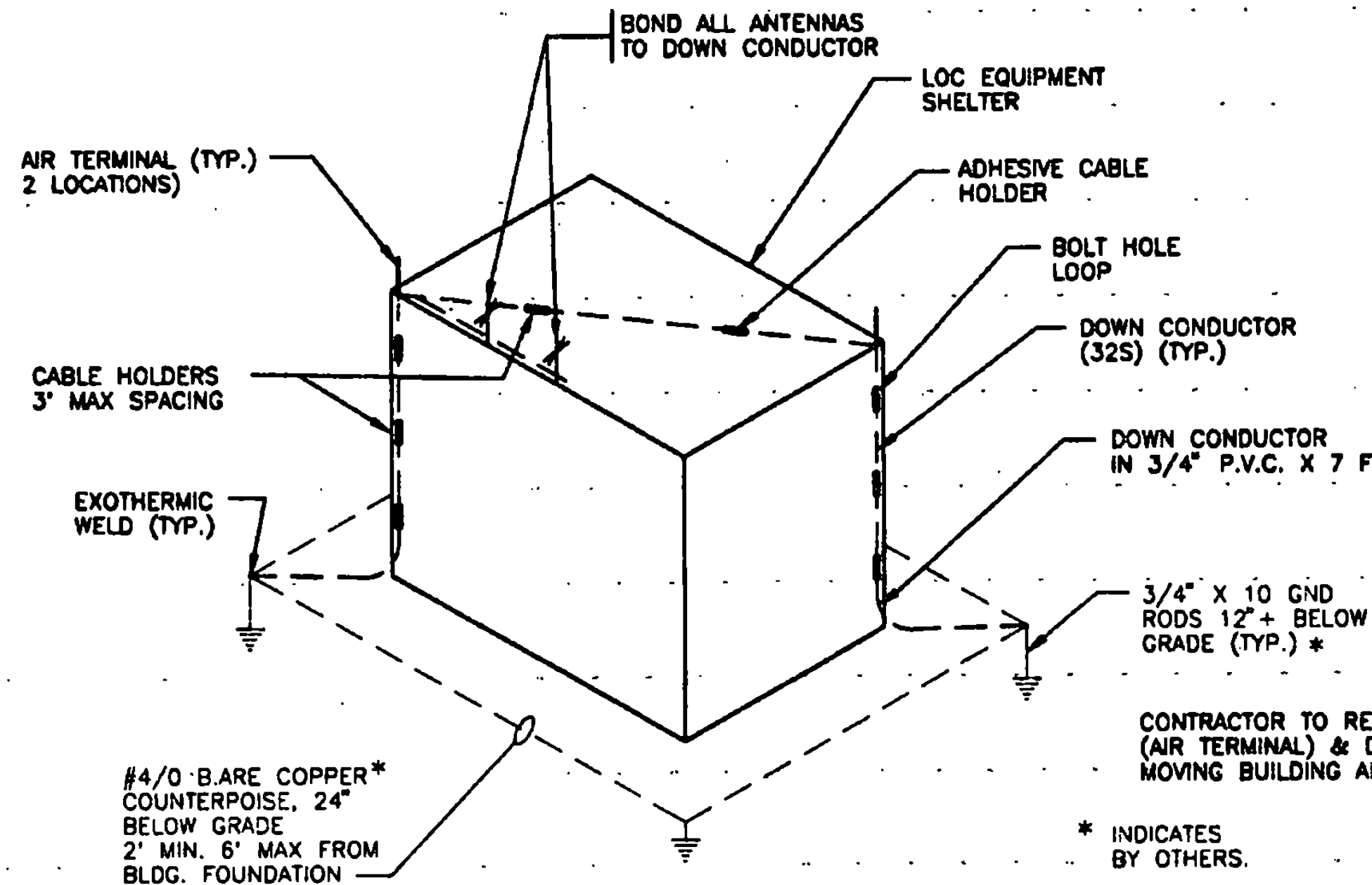
**SECTION "A-A"**  
SCALE: NONE



**SECTION "B-B"**  
SCALE: NONE

**NOTES:**

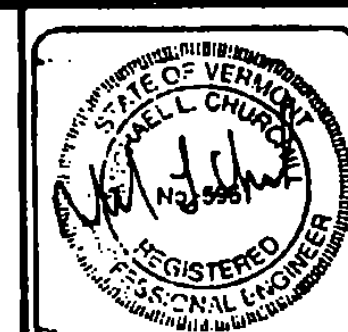
1. NEMA 1 ENCLOSURE, FUSED 2 POLE, SOLID NEUTRAL, DEAD FRONT, 400 AMP DISCONNECT SWITCH.
2. NEMA 1 ENCLOSURE, 1 PHASE, 3-WIRE, S/N, 120/240 VOLT, ADD AMP MAIN BREAKER WITH NEUTRAL ALL BOLT ON BREAKERS.
3. FLUORESCENT LIGHT FIXTURE.
4. AIR CONDITIONER - WALL MOUNTED.
5. EXTERIOR DOOR.
6. HEAVY DUTY, WEATHER PROOF, EXTERIOR WALL LIGHT MOUNTED ABOVE DOOR.
7. 3/4 IN. PLYWOOD BOLTED TO WALL.
8. PAINTED DRYWALL INTERIOR.
9. EXISTING SHELTER IS A PRE-CAST CONCRETE UNIT COMPLETE WITH WALLS, FLOOR & CEILING EXISTING BUILDING ON A PEASTONE BASE. CONTRACTOR TO DISCONNECT ALL CABLES & CONDUIT AT EXISTING LOCATION BEFORE RELOCATING SHELTER.
10. ALL LOOSE MATERIALS TO BE PACKAGED AND MOVED SEPARATELY. SECURE ALL EQUIPMENT PRIOR TO RELOCATING SHELTER. REMOVE ROOF MOUNTED ANTENNAS.
11. BUILDING/SHELTER TO BE LIFTED AND TRANSPORTED TO NEW SITE AS A COMPLETE UNIT.
12. BUILDING/SHELTER TO BE POSITIONED AT NEW LOCATION AS SHOWN ON SITE PLAN OR AS DIRECTED BY THE ENGINEER. CONNECT NEW CABLES AND CONDUITS AT NEW SITE. NEW CABLES AND CONDUITS BY OTHERS. COORDINATE TELEPHONE AND POWER CABLES WITH LOCAL PHONE AND UTILITY COMPANIES. COORDINATE FAA CABLE CONNECTIONS WITH FAA/FAE CONTACT JAMES CAULFIELD, @ (617) 238-7462.
13. CONTRACTOR TO REMOVE ELECTRICAL CABLING, & PEASTONE FOUNDATION FROM EXISTING SITE. CONTRACTOR TO REMOVE EXISTING FOUNDATION FOR LOCALIZER & DME. AREA TO BE REGRADED, TOPSOILED AND SEEDDED. COST OF THIS WORK TO BE INCLUDED IN COST OF ITEM 529.20 MOD 1.



**LIGHTNING PROTECTION DETAILS**  
SCALE: NONE

**LEGEND**

- Ⓢ LIGHT SWITCH, 4'-6" ABOVE FLOOR
- Ⓛ DUPLEX RECEPTICLE, 4' ABOVE FLOOR
- Ⓜ 240 VOLT RECEPTICLE, 4' ABOVE FLOOR
- Ⓣ 240 VOLT LINE THERMOSTAT



REV.	DATE	DESCRIPTION	FILE NO.

RUTLAND STATE AIRPORT  
CLARENDON, VERMONT

LOCALIZER/DME RUNWAY 19  
POWER AND CONTROL BUILDING

**URS Greiner, Inc.**  
3 MARCUS BOULEVARD  
ALBANY, NEW YORK

Designed by: G. D'AMICO 2/87	Drawn by: M. MCALLA 3/87	Checked by: G. D'AMICO 5/2/87	Approved by: M. CARROLL 5/9/87
Scale: HOR. - 1" = 4'		VERT. - 1" = 4'	
Date: 5/8/87			
Sheet 48 OF 63			
Sheet No. <b>45</b>			