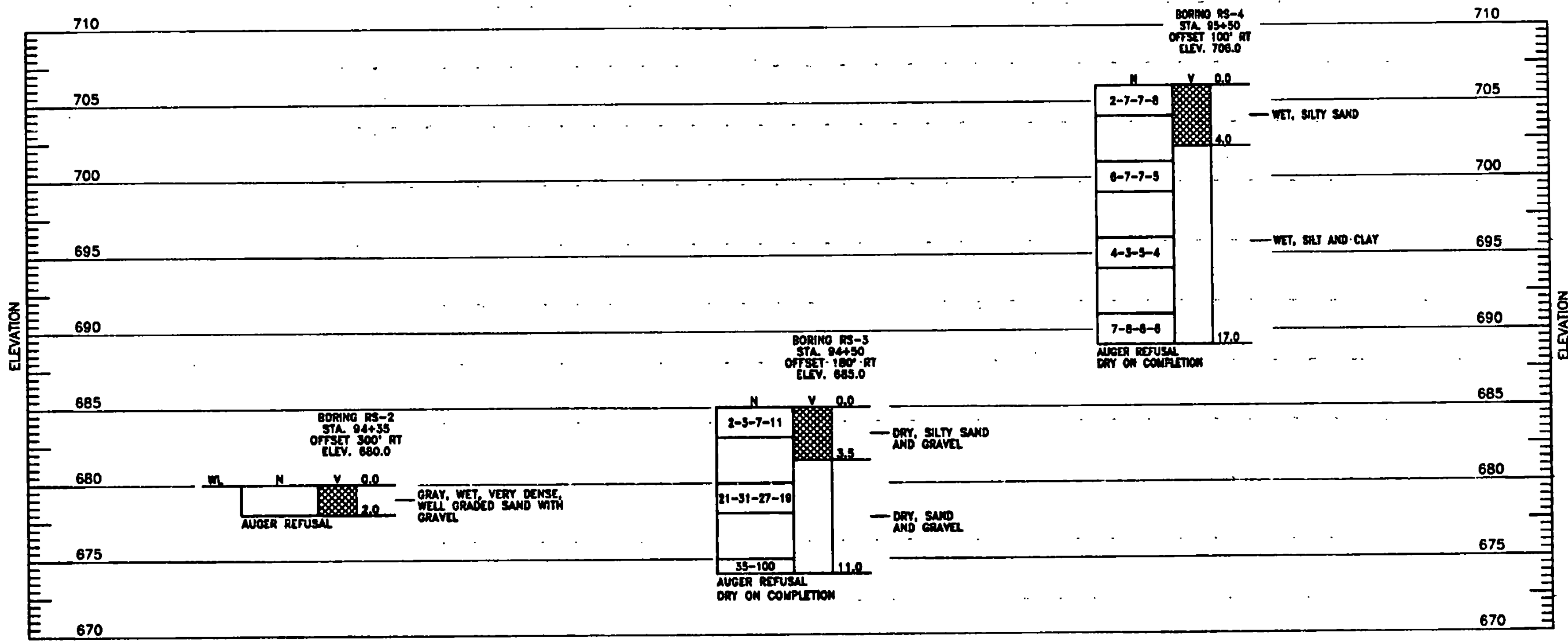
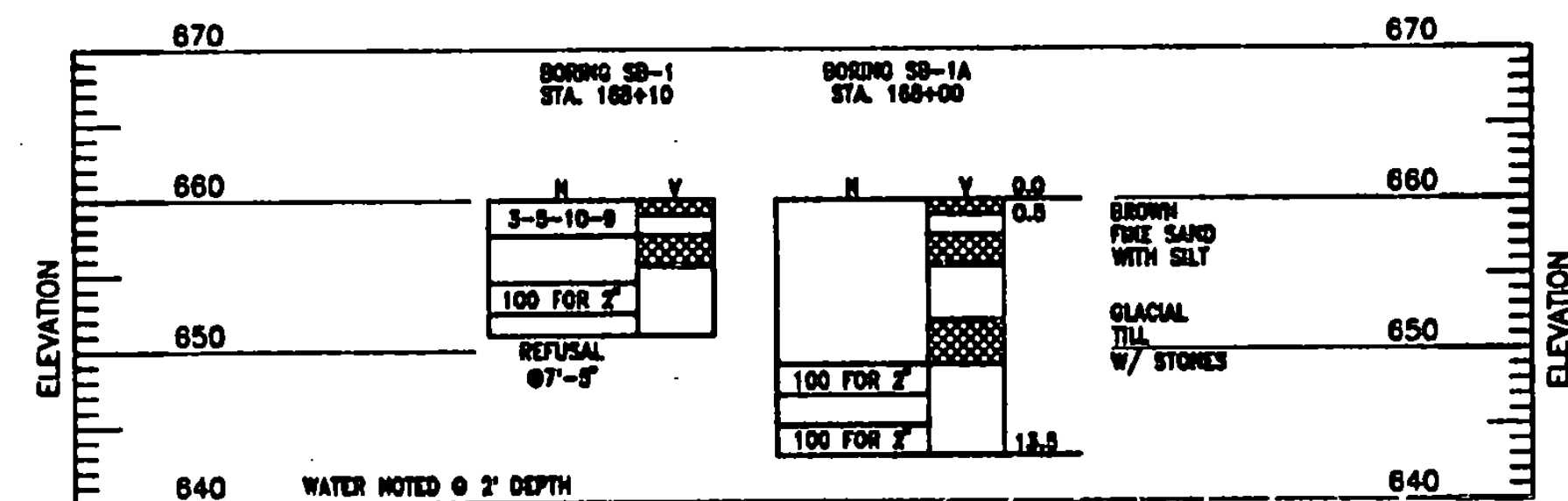


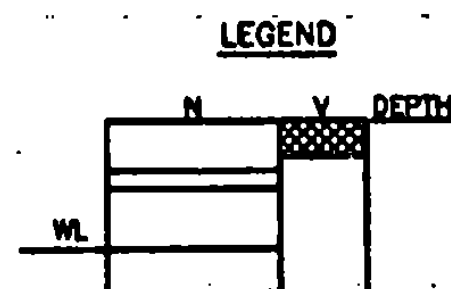
**BORINGS AND DRIVE TESTS**  
SCALE: AS SHOWN



**BORINGS AND DRIVE TESTS**  
SCALE: AS SHOWN



**BORINGS AND DRIVE TESTS**  
SCALE: AS SHOWN

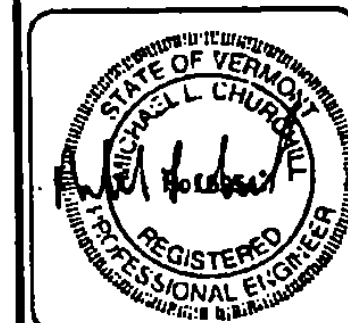


**NOTE:**  
1.) BORINGS AND DRIVE TESTS WERE TAKEN IN NOVEMBER 1995, BY GREEN MOUNTAIN BORING.

2.) N - BLOWS PER 6 INCH INCREMENT OF PENETRATION OF SAMPLING SPOON OR PENETRATION IN INCHES FOR THE INDICATED BLOWS OF A 140 LB. HAMMER FALLING 30". WHERE ROCK IS ENCOUNTERED, PERCENT CORE RECOVERY IS SHOWN. R.Q.D. IS SHOWN IN PARENTHESES.

THE ROCK QUALITY DESIGNATION (R.Q.D.) IS BASED ON A MODIFIED CORE RECOVERY PROCEDURE WHICH, IN TURN, IS BASED INDIRECTLY ON THE NUMBER OF FRACTURES (EXCEPT THOSE DUE DIRECTLY TO DRILLING OPERATIONS) AND THE AMOUNT OF SOFTENING OR ALTERATION IN THE ROCK MASS AS OBSERVED IN THE ROCK CORES FROM A DRILL HOLE. INSTEAD OF COUNTING THE FRACTURES, AN INDIRECT MEASURE IS OBTAINED BY SUMMING THE TOTAL LENGTH OF CORE RECOVERED BY COUNTING ONLY THOSE PIECES OF HARD AND SOUND CORE WHICH ARE 4 INCHES OR GREATER IN LENGTH. THE RATIO OF THIS MODIFIED CORE RECOVERY LENGTH TO THE TOTAL CORE RUN LENGTH IS KNOWN AS THE R.Q.D.

V - ALTERNATE SHADING INDICATES EXTENT OF SOIL OR ROCK LAYERS.  
WL - WATER LEVEL READING AT COMPLETION OF BORING.



REV.	DATE	DESCRIPTION
1	8/8/97	ADDED

Job No. 170212.00  
File No. 11/10/12/19/08

**RUTLAND STATE AIRPORT**  
CLARENDON, VERMONT

**BORING LOGS**

**URS Greiner, Inc.**  
3 MARCUS BOULEVARD  
ALBANY, NEW YORK

Designed by: c/franco	Date: 8/8/97
Drawn by: m/mccalla	Checked by: c/franco
Approved by: m/carlson	

Scale: HOR. - AS SHOWN  
VERT. - NONE

Date: 8/8/97

Sheet 44 Of 63

Sheet No  
**44**