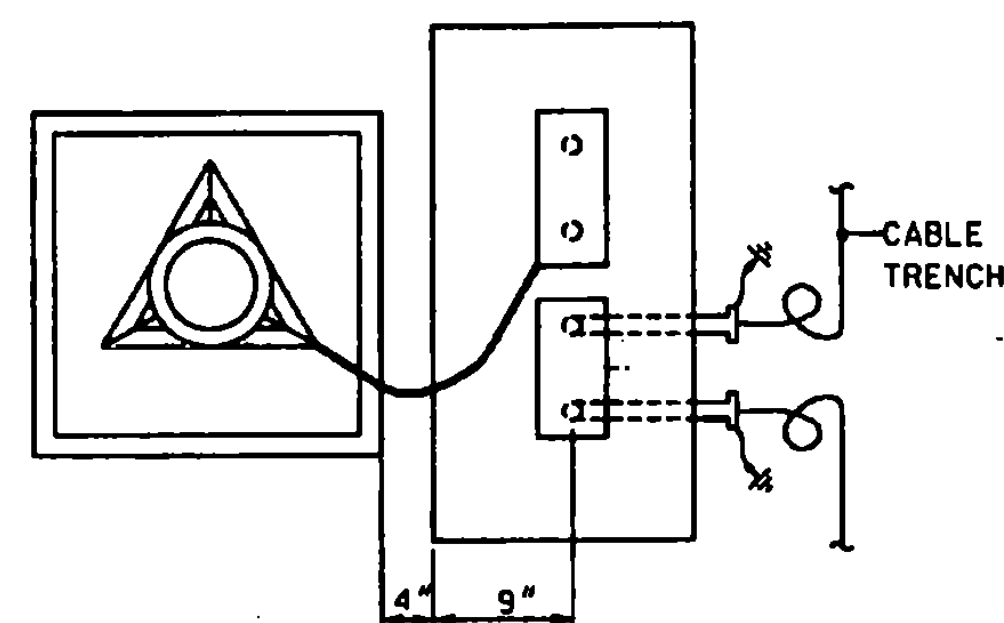
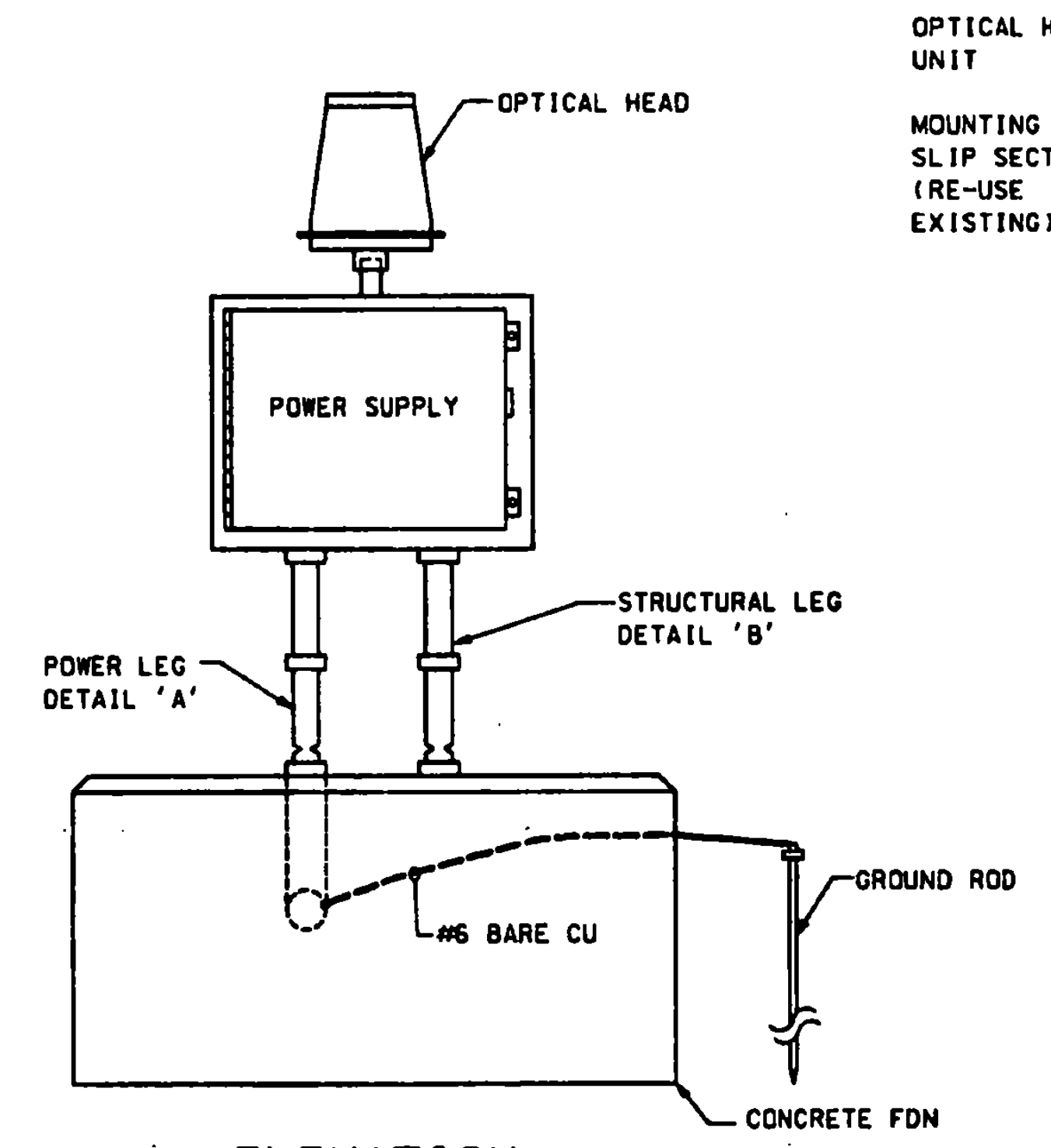


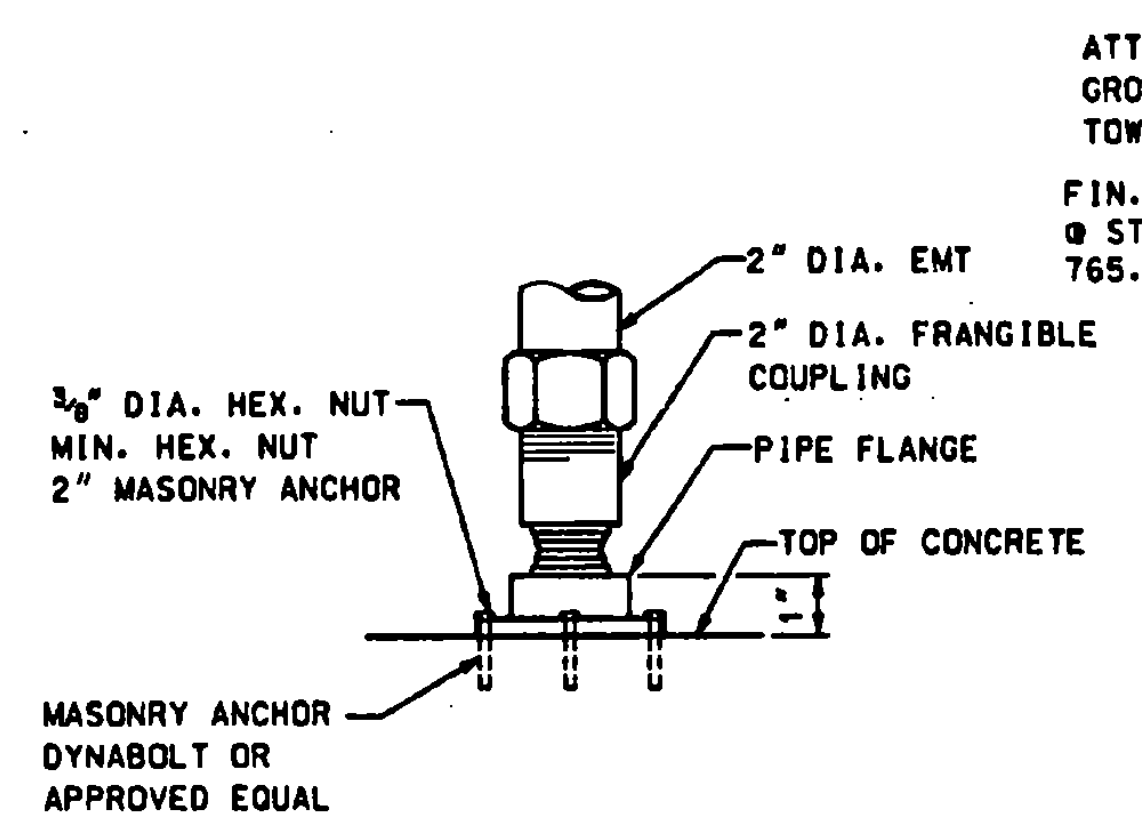
PLAN
N.T.S.



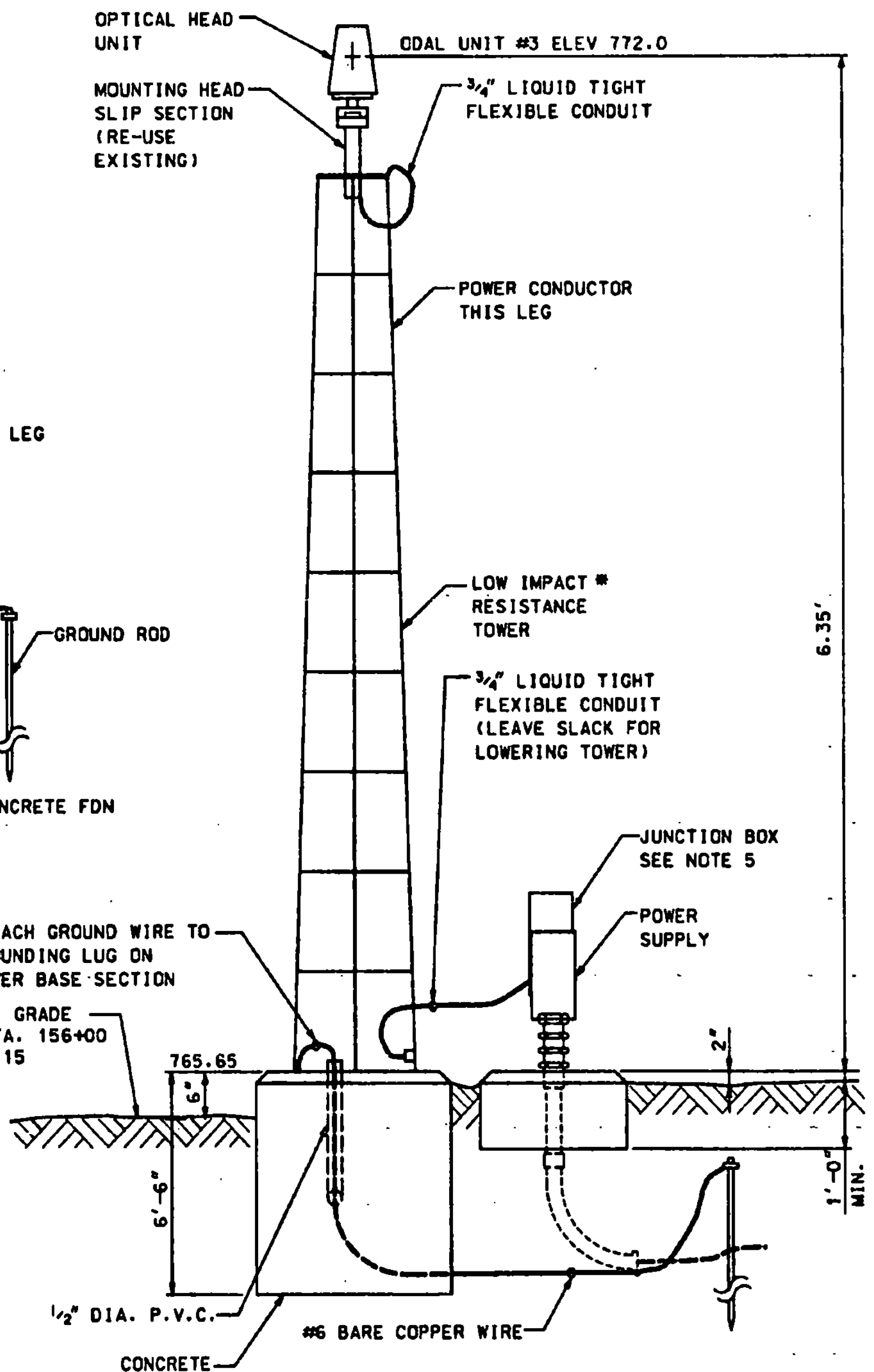
PLAN
N.T.S.



ELEVATION
ODALS UNIT 1R & 1L
N.T.S.

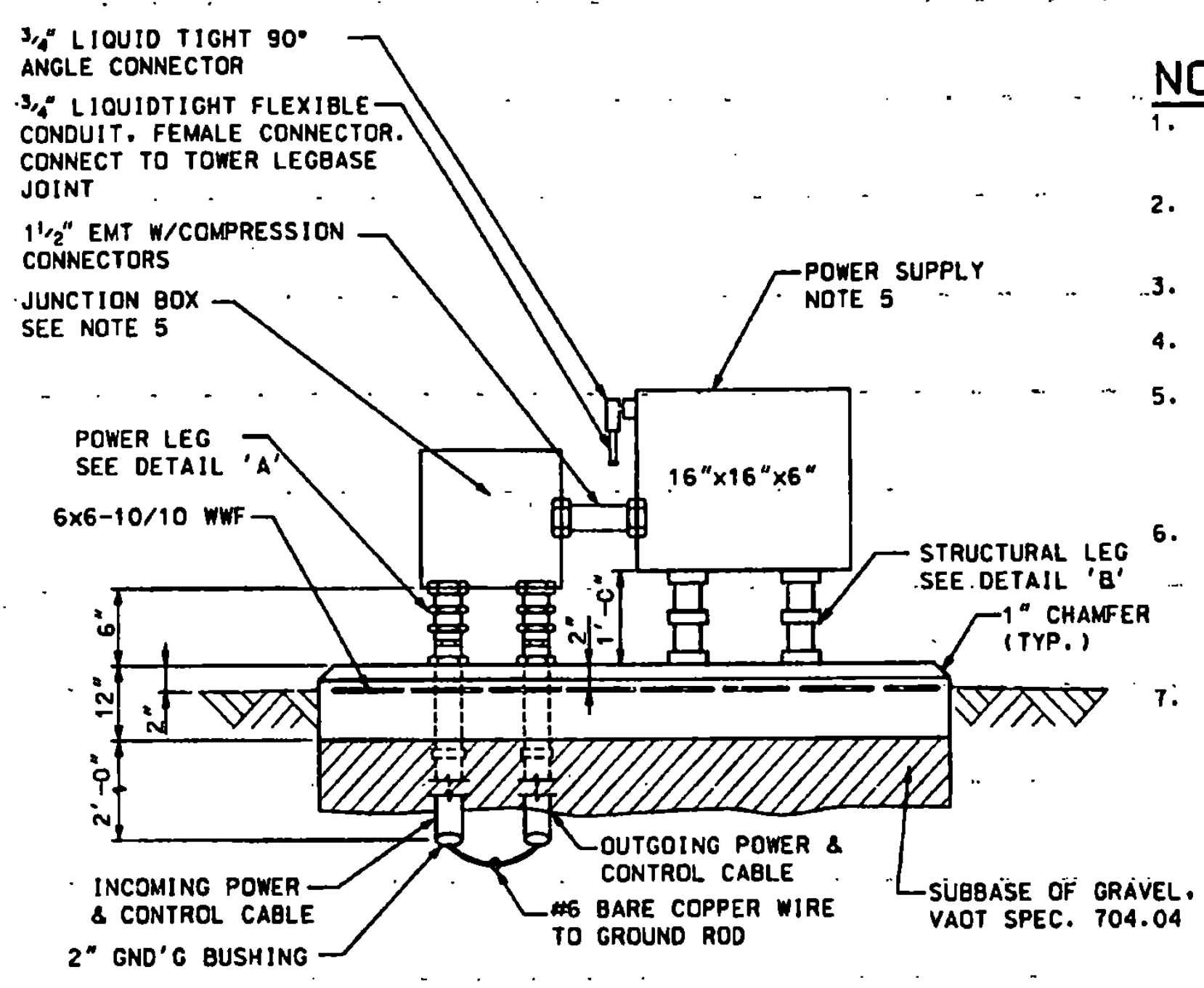


STRUCTURAL LEG-DETAIL 'B'
N.T.S.

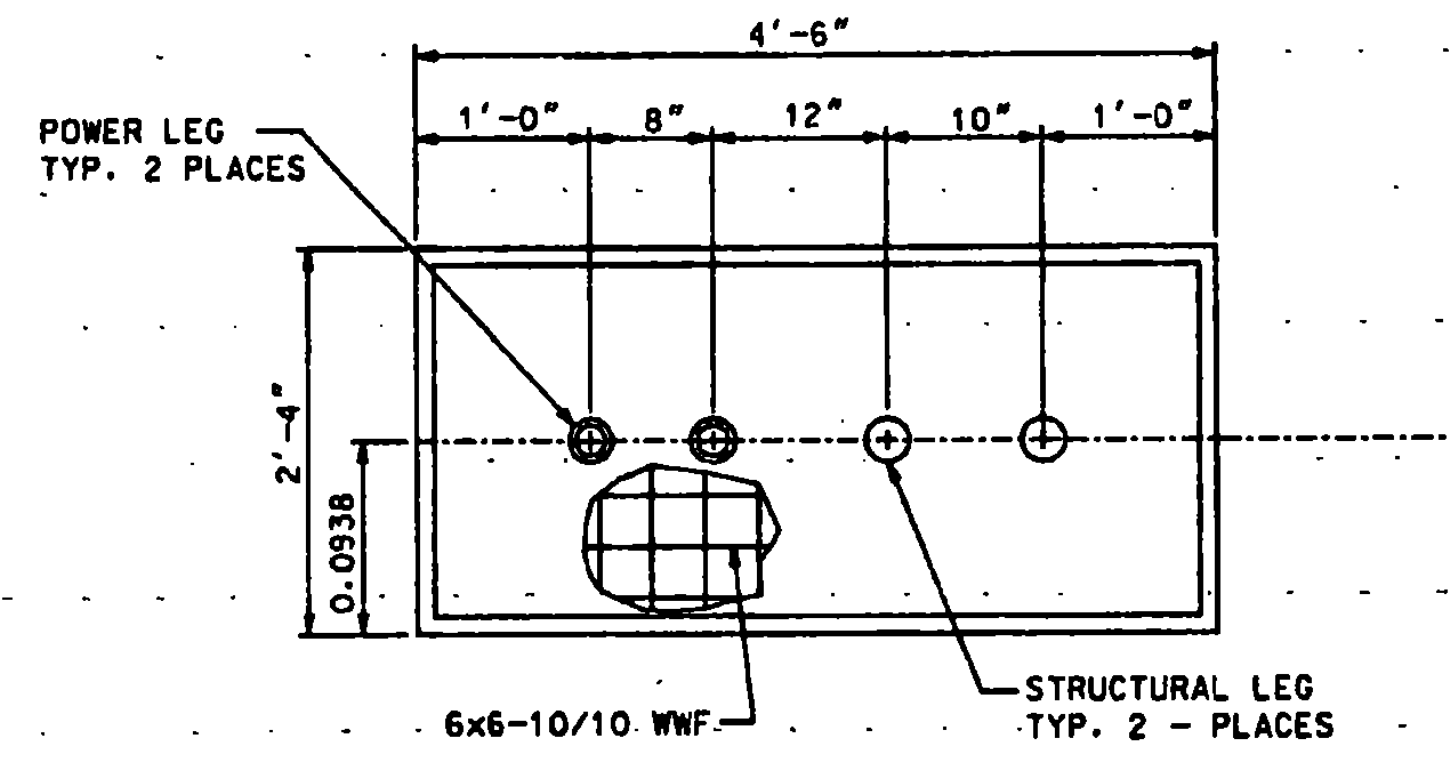


ELEVATION
N.T.S.

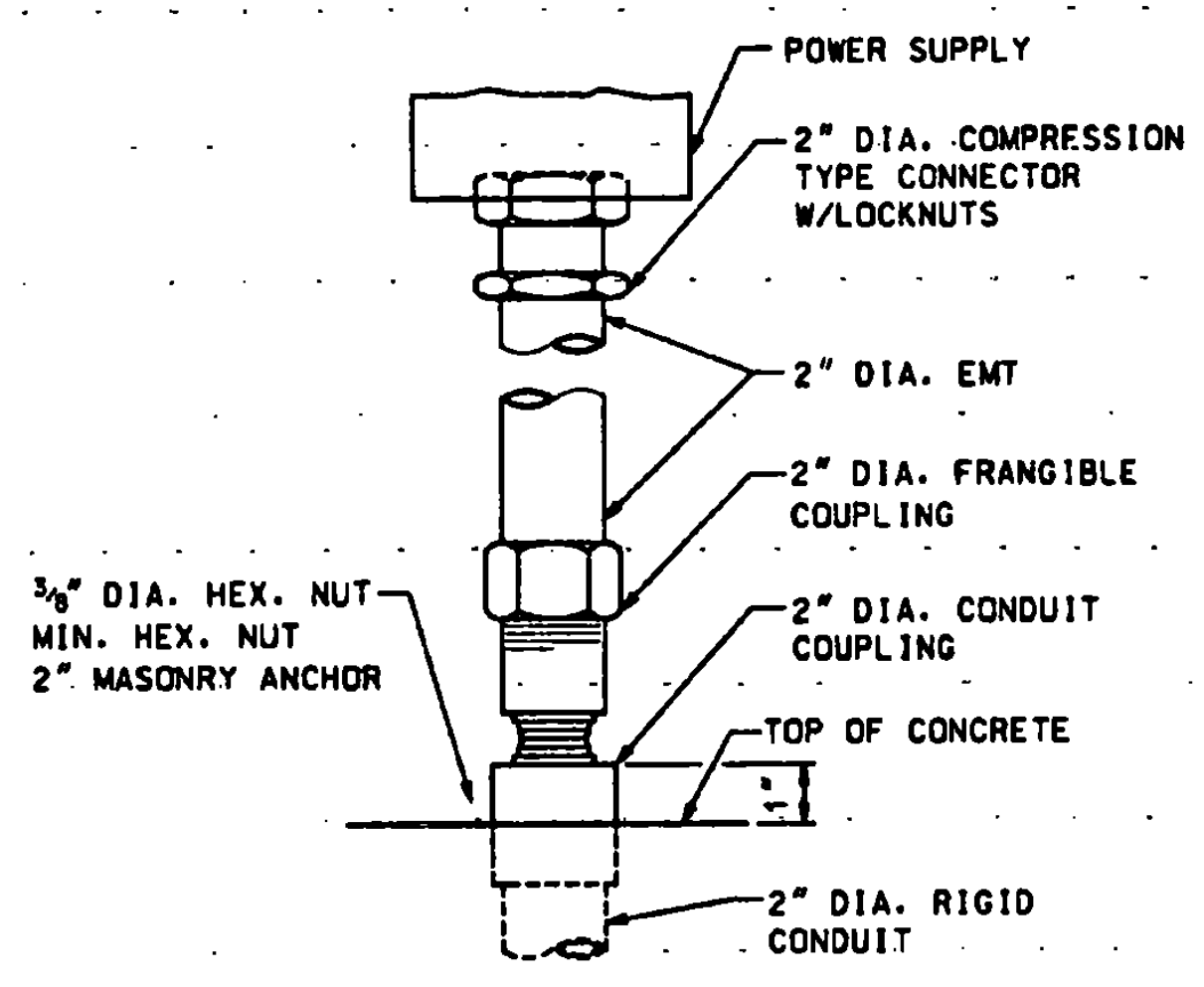
ODAL UNIT #3
* REUSE EXISTING TOWER - ADJUST TO HEIGHT



ELEVATION
N.T.S.



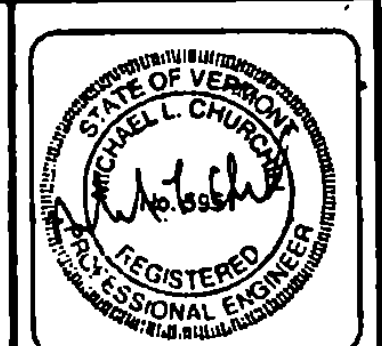
PLAN
EQUIPMENT PAD FOUNDATION DETAILS



STRUCTURAL LEG-DETAIL 'A'
N.T.S.

NOTES:

1. REFER TO FACILITY LAYOUT PLAN FOR LIGHT FIXTURE ELEVATIONS.
2. REFER TO SHEET 35' FOR TOP ELEVATION OF CONCRETE FOUNDATION.
3. REFER TO CABLE LAYOUT PLAN FOR ROUTING.
4. USE ANTI-SEIZE COMPOUND ON ALL PIPE THREADS.
5. RELOCATE ALL EXISTING EQUIPMENT. RE-USE TO THE EXTENT POSSIBLE. CONTRACTOR TO SUPPLY NEW PCC FOUNDATIONS AND ALL CONDUIT, FITTINGS, CABLES, ETC.
6. CONTRACTOR TO INSPECT ALL EQUIPMENT PRIOR TO RELOCATING. EXISTING DAMAGE TO BE NOTED. CONTRACTOR WILL BE RESPONSIBLE FOR REPLACING OR REPAIRING ALL DAMAGE CAUSED BY HIS FORCES DURING RELOCATION & RE-INSTALLATION.
7. CONTRACTOR TO VERIFY NEW ODAL UNIT ELEVATION AND TOWER HEIGHT PRIOR TO INSTALLATION.



REV.	DATE	DESCRIPTION

RUTLAND STATE AIRPORT
CLARENDON, VERMONT

ODALS - FLASHER MOUNTING DETAILS

URS Greiner, Inc
3 MARCUS BOULEVARD
ALBANY, NEW YORK

Designed by: J.P.T.
Drawn by: M. McALLA
Checked by: J.P.T.
Approved by: M. McALLA

Scale: N.T.S.
Date: 6/2/97
Sheet 38 of 68
Sheet No
38