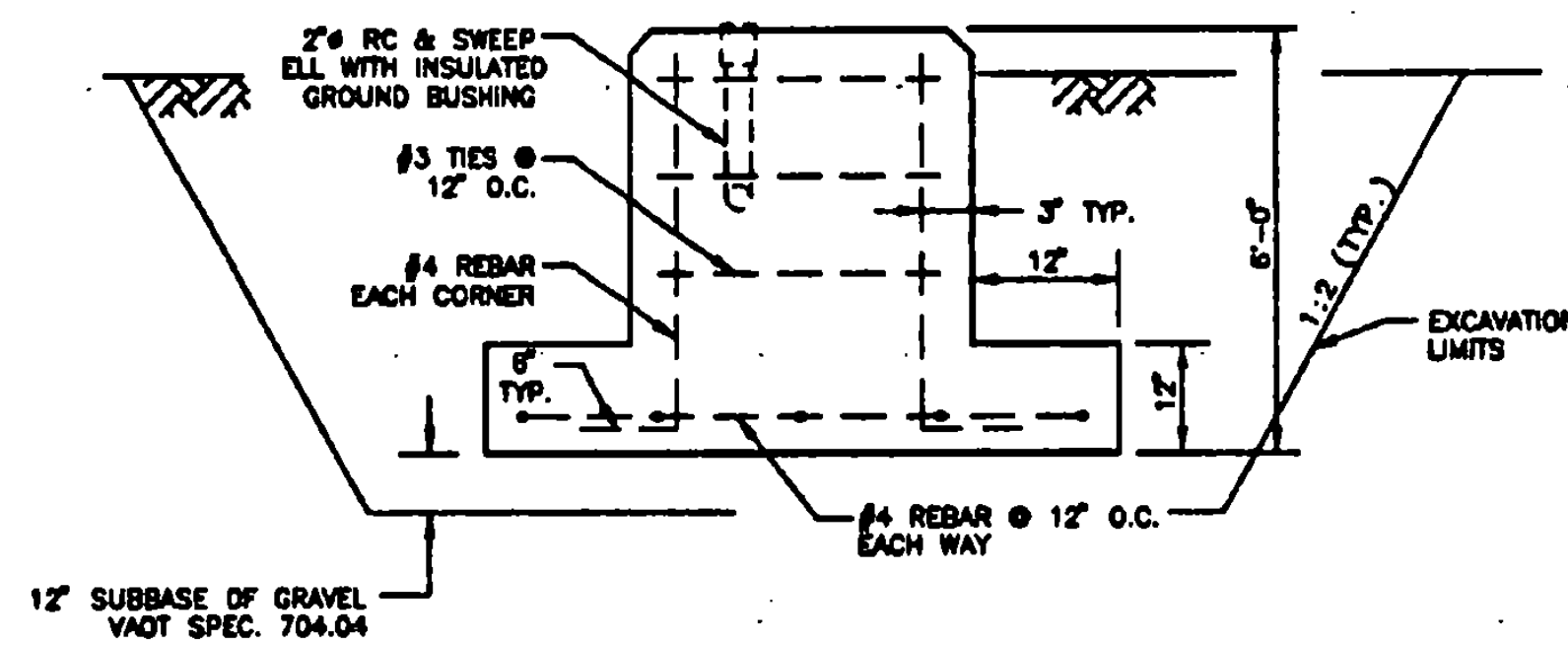
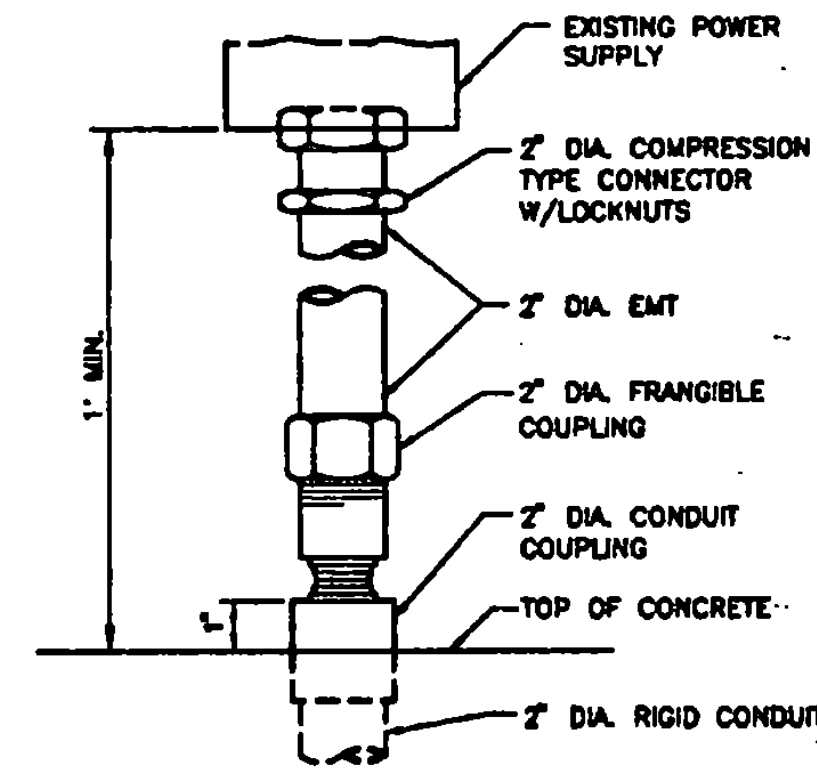


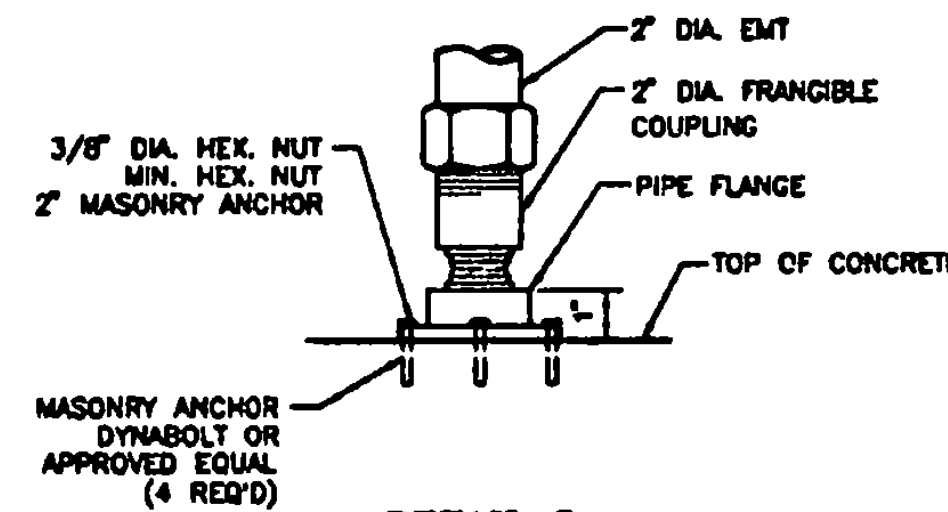
DETAIL 2



DETAIL 3



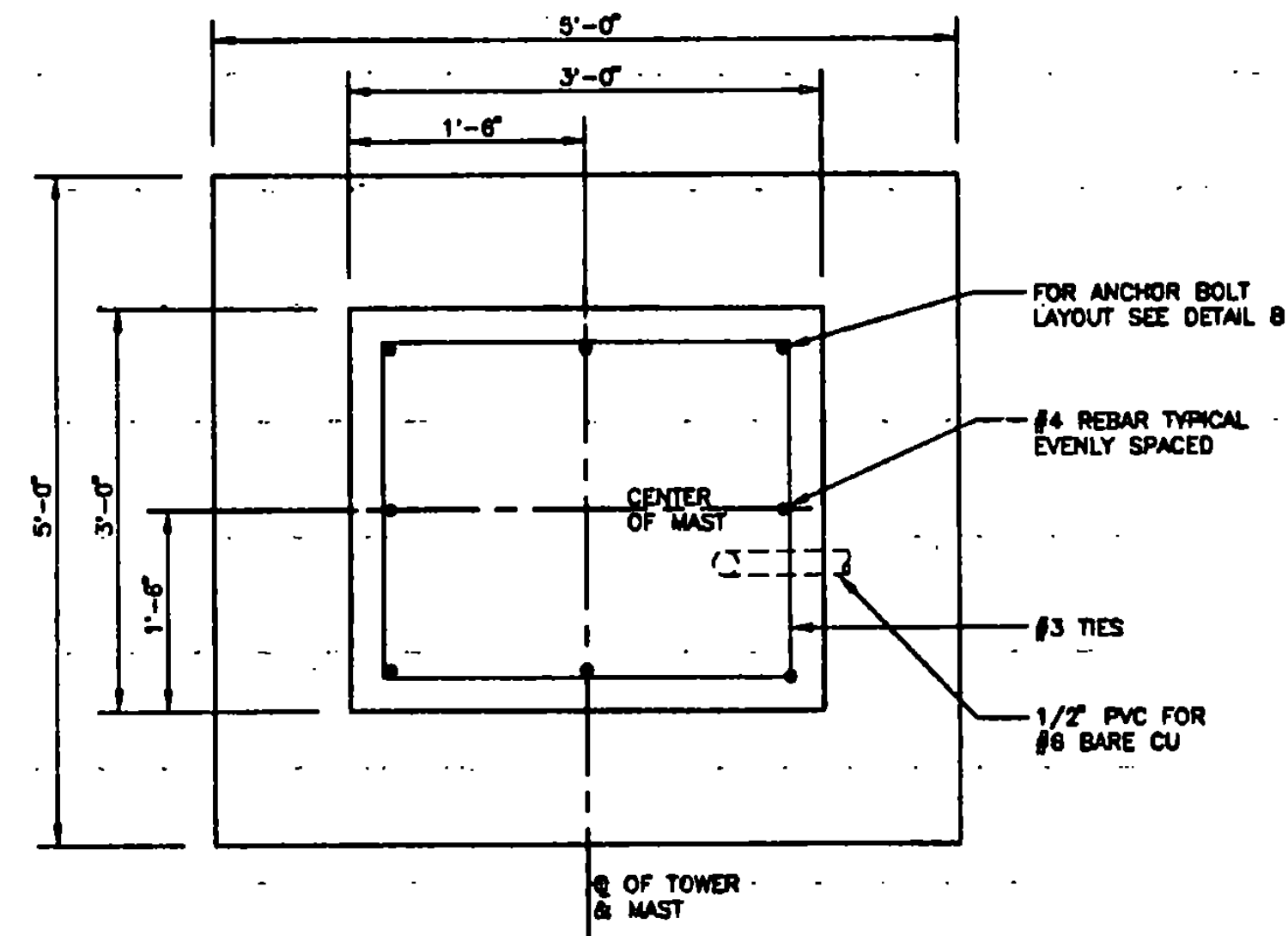
DETAIL 4



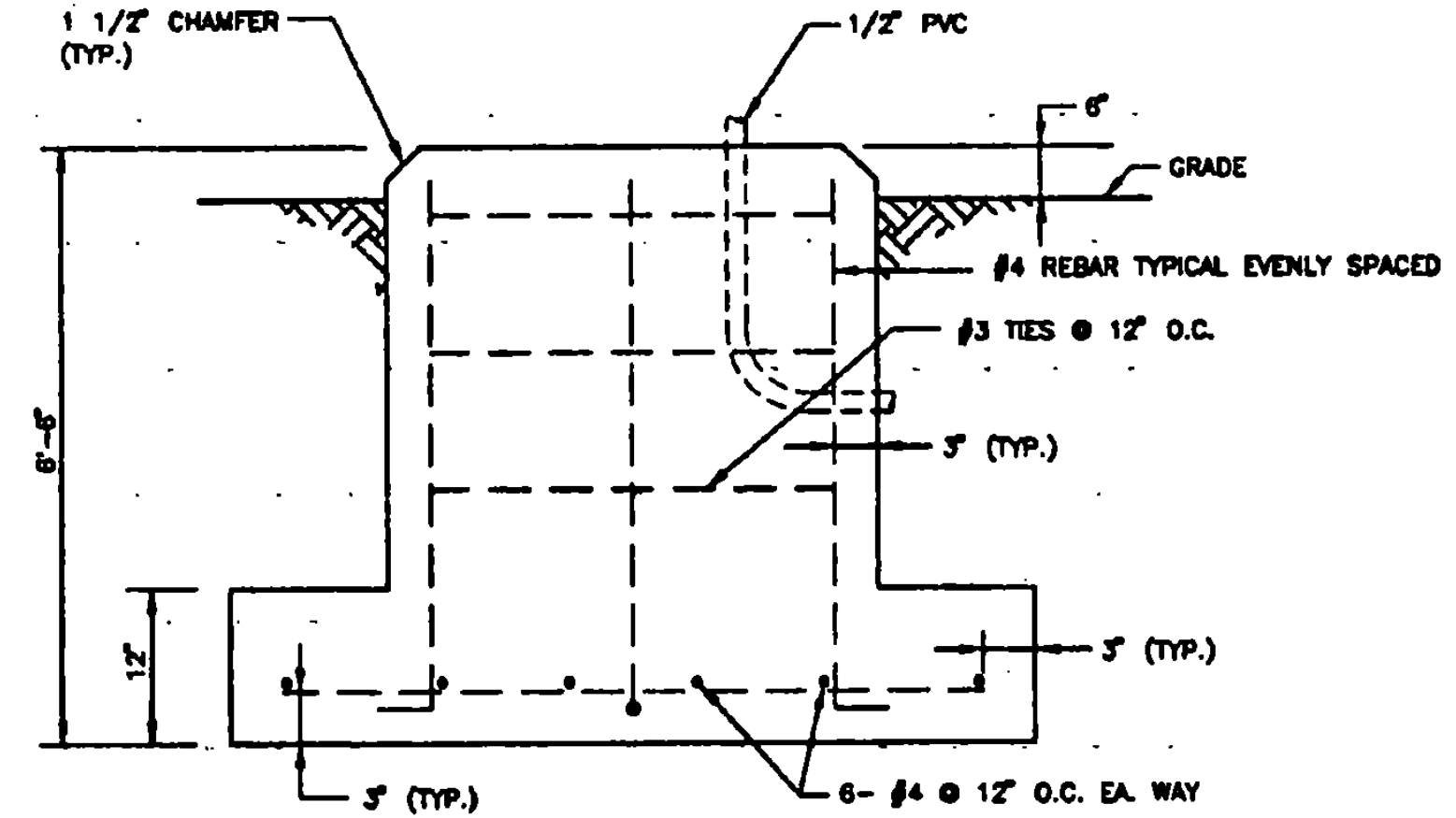
DETAIL 5

**ODALS FOUNDATION DETAILS**  
**ODALS UNITS #1R & #1L**  
**125' LT & RT OF STA. 153+20**

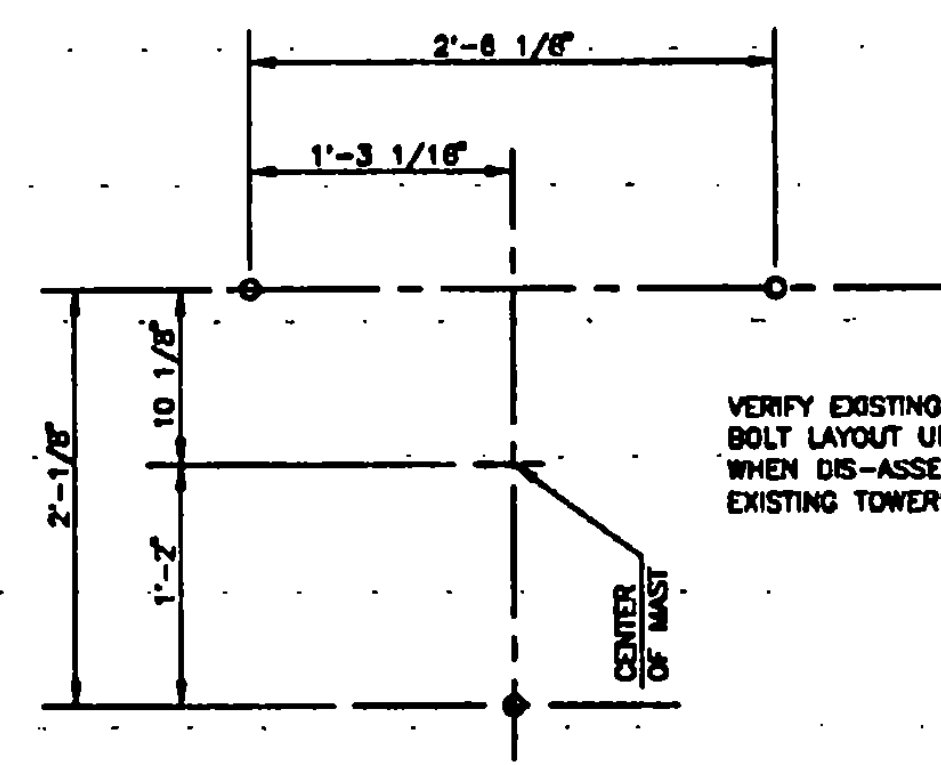
- NOTES:**
- EXISTING FOUNDATIONS UNITS #2 & #3 TO BE ABANDONED IN PLACE.
  - ODALS ELECTRICAL CABLES TO BE RE-ROUTED TO NEW LOCATION.
  - EXISTING ODALS UNITS TO BE REMOVED FROM EXISTING FOUNDATIONS AND PLACED ON NEW FOUNDATIONS.
  - ALL CONCRETE TO BE CLASS B, CONFORMING TO SECTION 501. STRUCTURAL CONCRETE, VAOT SPECIFICATIONS.
  - EXISTING UNDERGROUND (DIRECT BURIAL CABLES) 3-1/2\"/>
  - USE ANTI-SEIZE COMPOUND ON ALL THREADS.
  - ALL ANCHOR BOLTS, NUTS & WASHERS SHALL BE HOT DIP GALVANIZED PER ASTM - 13 & ASTM - 323.



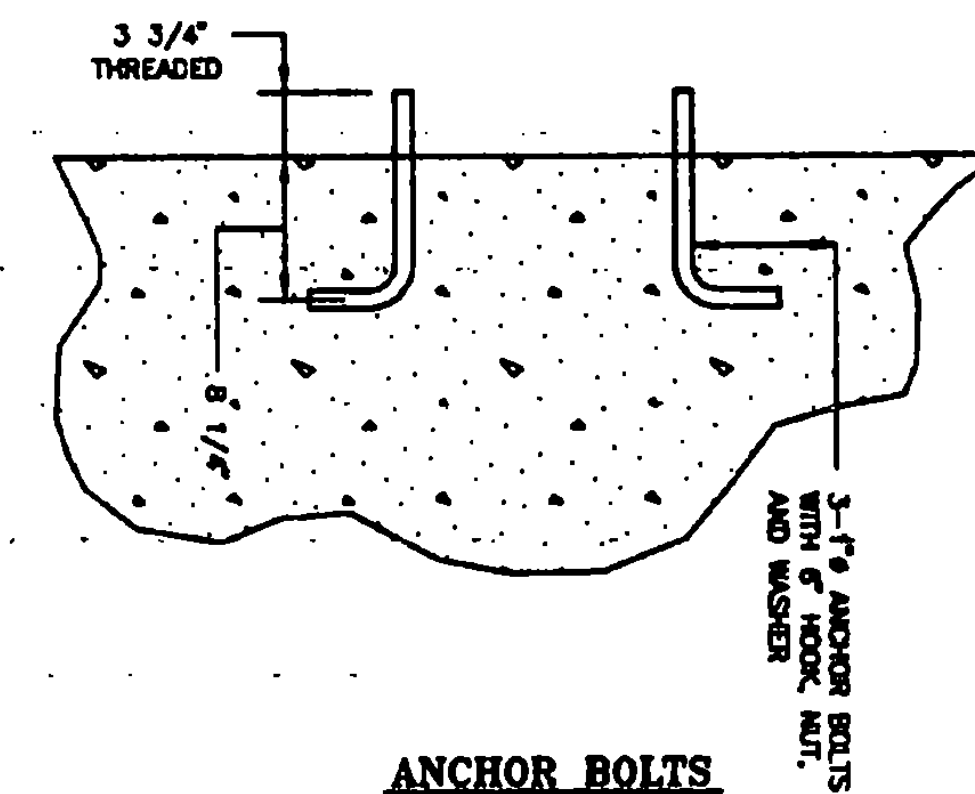
DETAIL 6



DETAIL 7



ANCHOR BOLT PLAN  
 DETAIL 8



ANCHOR BOLTS  
 DETAIL 9

**ODALS FOUNDATION DETAILS**  
**UNIT #3**  
**STATION 156+00**



REV.	DATE	DESCRIPTION

RUTLAND STATE AIRPORT  
 CLARENDON, VERMONT

ODALS FOUNDATION DETAILS

**URS Greiner, Inc.**  
 3 MARCUS BOULEVARD  
 ALBANY, NEW YORK

Checked by: S. D'Amico 2/97	Drawn by: M. Scallia 3/97
Checked by: S. D'Amico 5/97	Approved by: S. D'Amico 5/97

Scale: 1/8" = 1'-0" AS SHOWN  
 1/4" = 1'-0" AS SHOWN

Date: 5/5/97

Sheet 38 of 55

Sheet No

38