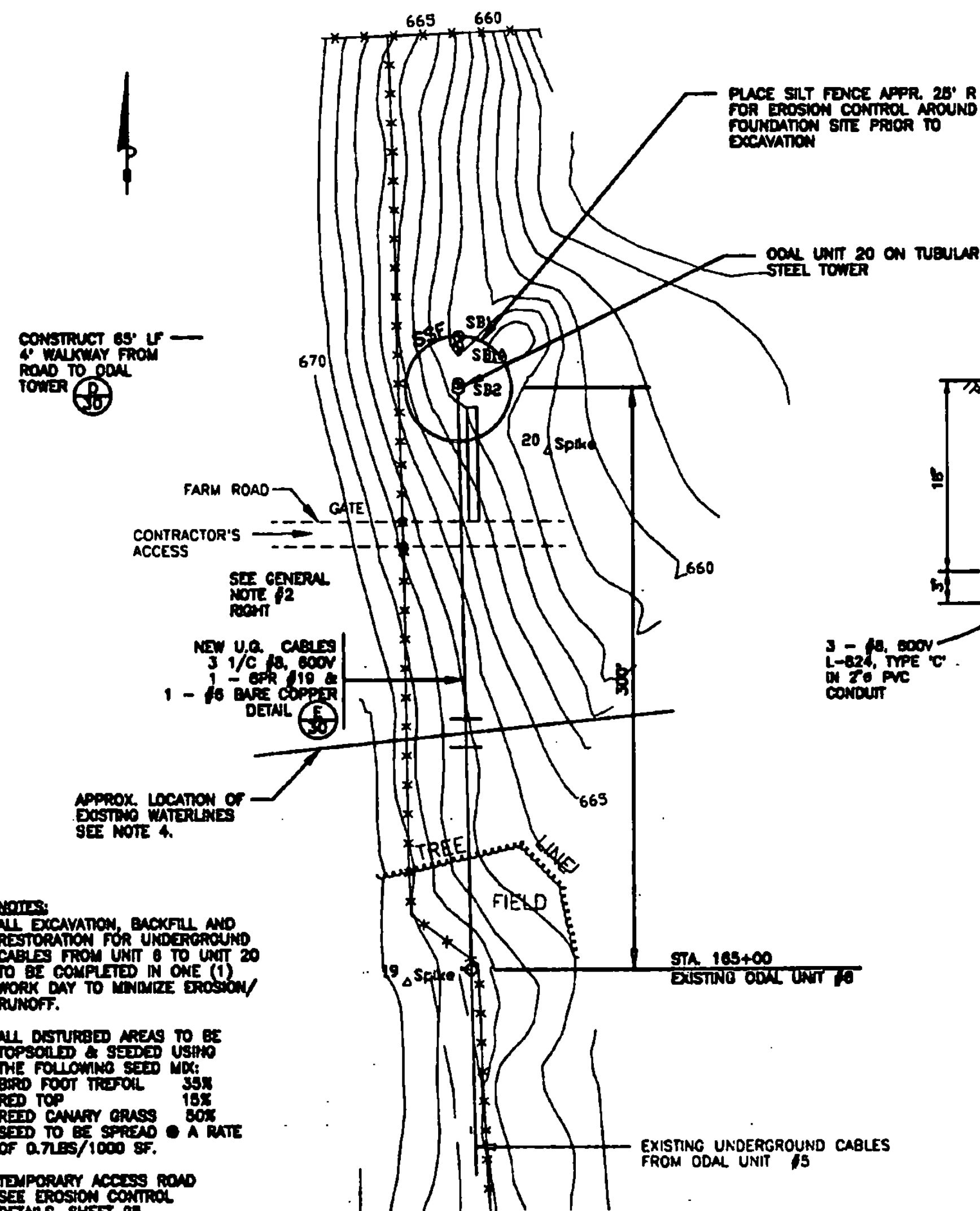
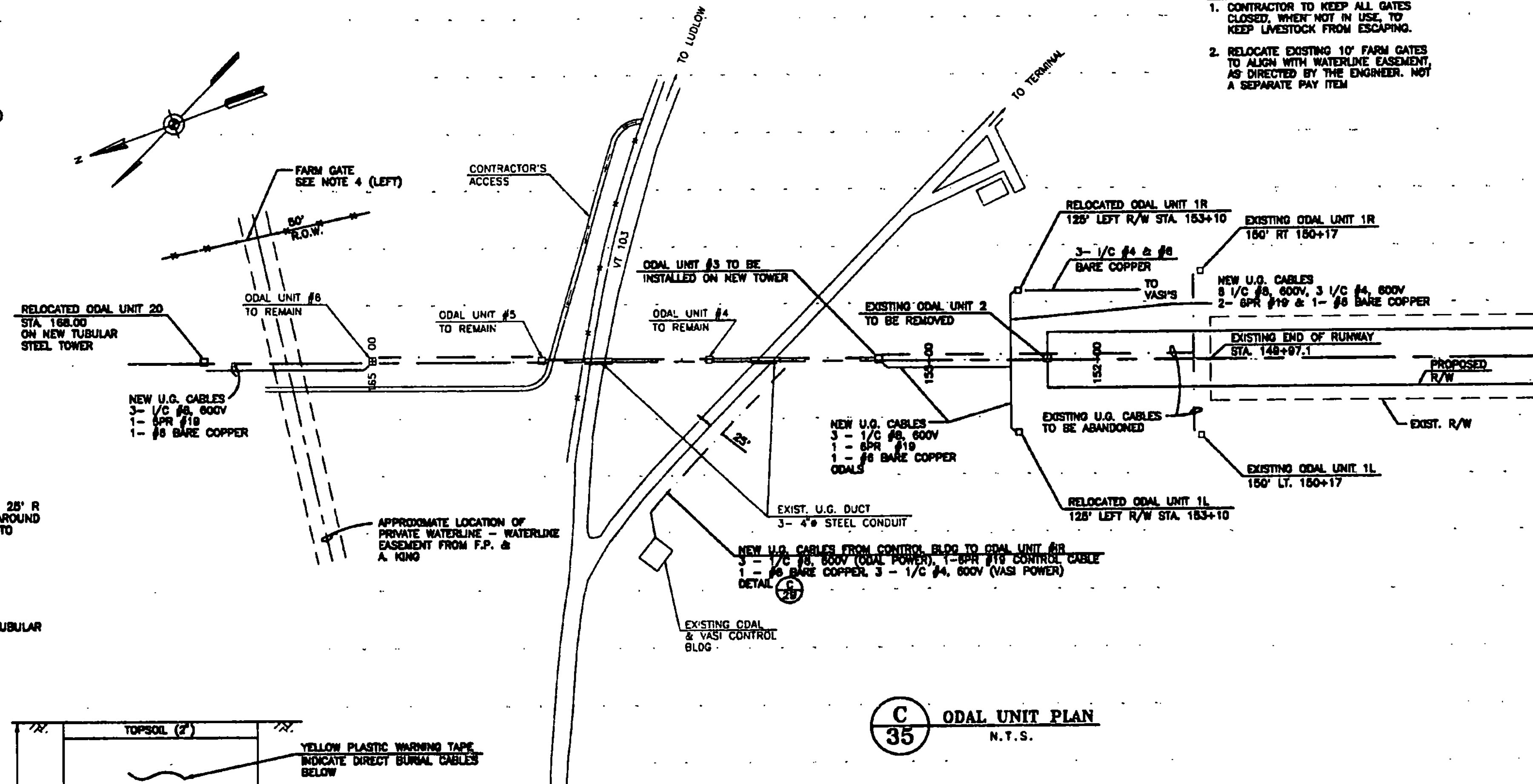


D 35 WALKWAY DETAIL
N.T.S.

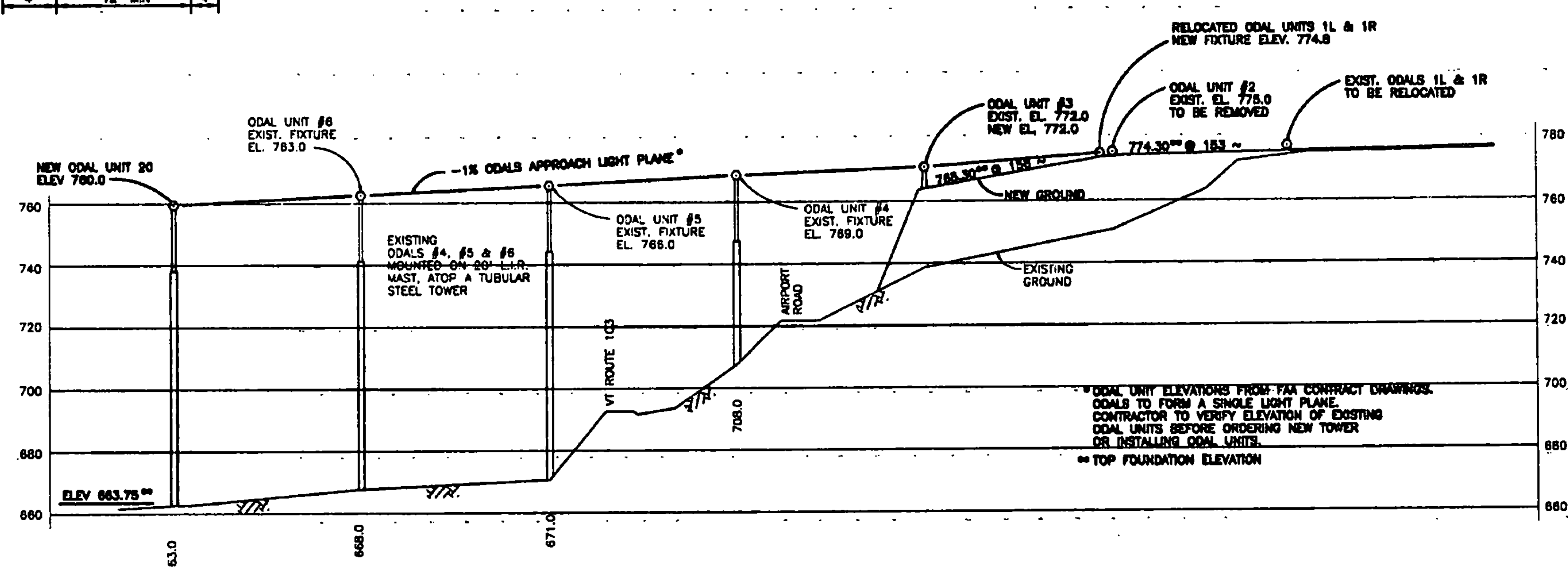
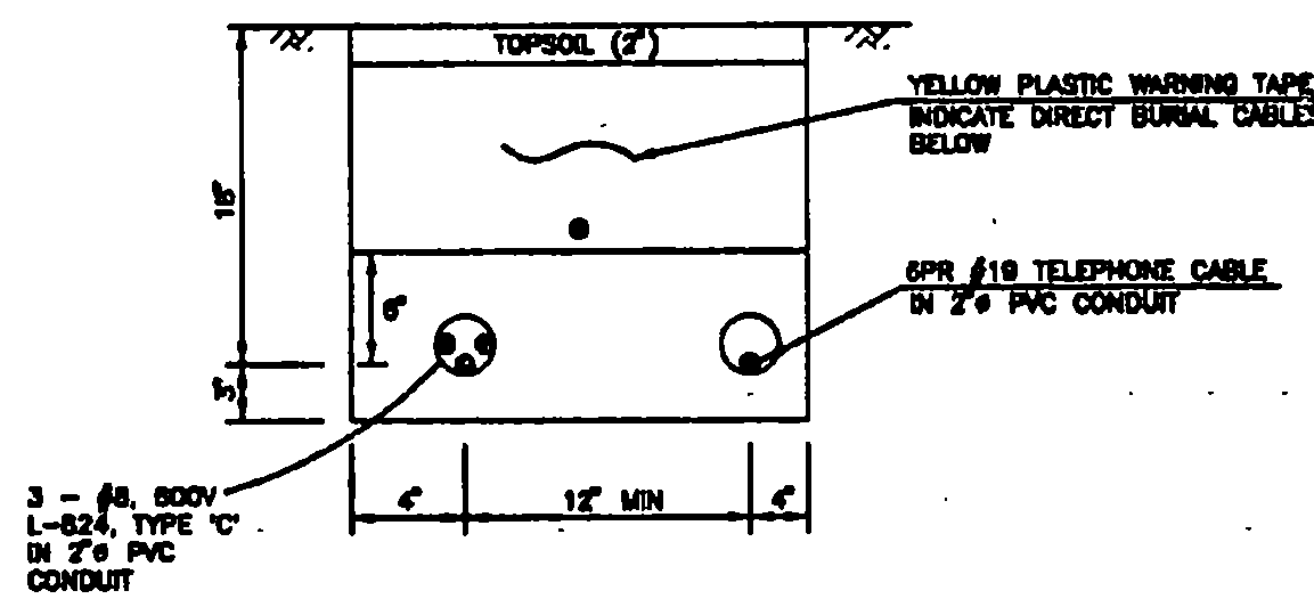


A 35 ODAL UNIT 20
SCALE: 1" = 50'

- NOTES:**
1. ALL EXCAVATION, BACKFILL AND RESTORATION FOR UNDERGROUND CABLES FROM UNIT 8 TO UNIT 20 TO BE COMPLETED IN ONE (1) WORK DAY TO MINIMIZE EROSION/RUNOFF.
 2. ALL DISTURBED AREAS TO BE TOPSOILED & SEEDED USING THE FOLLOWING SEED MIX:
BRD FOOT TREFOIL 33%
RED TOP 15%
REED CANARY GRASS 52%
SEED TO BE SPREAD @ A RATE OF 0.7 LBS./1000 SF.
 3. TEMPORARY ACCESS ROAD SEE EROSION CONTROL DETAILS, SHEET 25.
 4. PLACE 2 12LF #8 SLEEVES, APPROX 5' BELOW GRADE PARALLEL TO EXISTING WATERLINE. NOT A SEPARATE PAY ITEM.



C 35 ODAL UNIT PLAN
N.T.S.



B 35 ODAL TOWERS - PROFILE
N.T.S.

- GENERAL NOTES:**
1. CONTRACTOR TO KEEP ALL GATES CLOSED, WHEN NOT IN USE, TO KEEP LIVESTOCK FROM ESCAPING.
 2. RELOCATE EXISTING 10' FARM GATES TO ALIGN WITH WATERLINE EASEMENT, AS DIRECTED BY THE ENGINEER. NOT A SEPARATE PAY ITEM.

STATE OF VERMONT
100
REGISTERED PROFESSIONAL ENGINEER
No. 5551

RUTLAND STATE AIRPORT
CLARENDON, VERMONT

ODALS - PLAN & PROFILE

URS Greiner, Inc.
3 MARCUS BOULEVARD
ALBANY, NEW YORK

Designed by: C. D'Amico 2/07	Checked by: M. Boudreau 3/07
Drawn by: M. Boudreau 3/07	Approved by: M. Boudreau 5/2/07

Scale: HOR. - 1" = 100'
VERT. - 1" = 20'

Date: 5/9/07

Sheet 35 of 35

Sheet No
35

AIP 3-50-0015-11