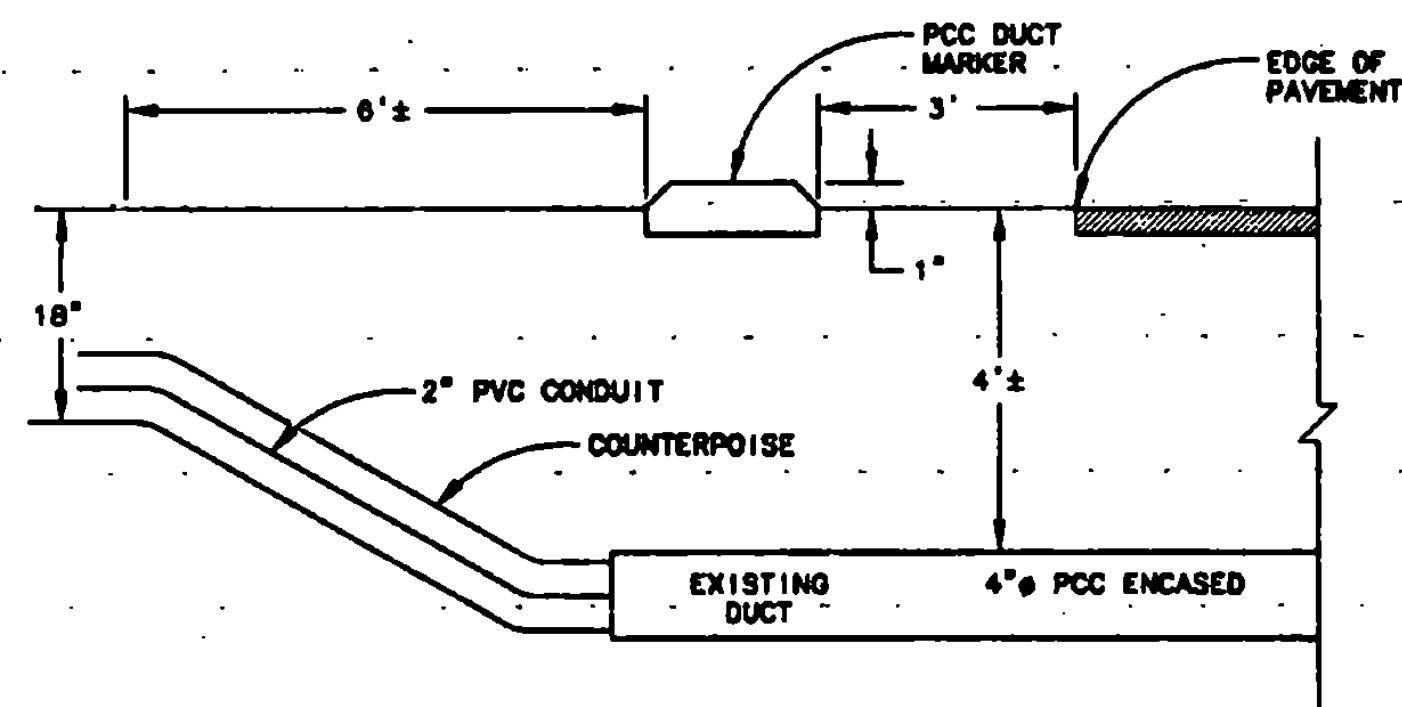


NOTE:  
ADDITIONAL CONDUITS MAY BE  
PLACED IN SAME TRENCH @ 3"  
SPACING. MAX. NUMBER OF  
CABLES / CONDUIT PER N.E.C.

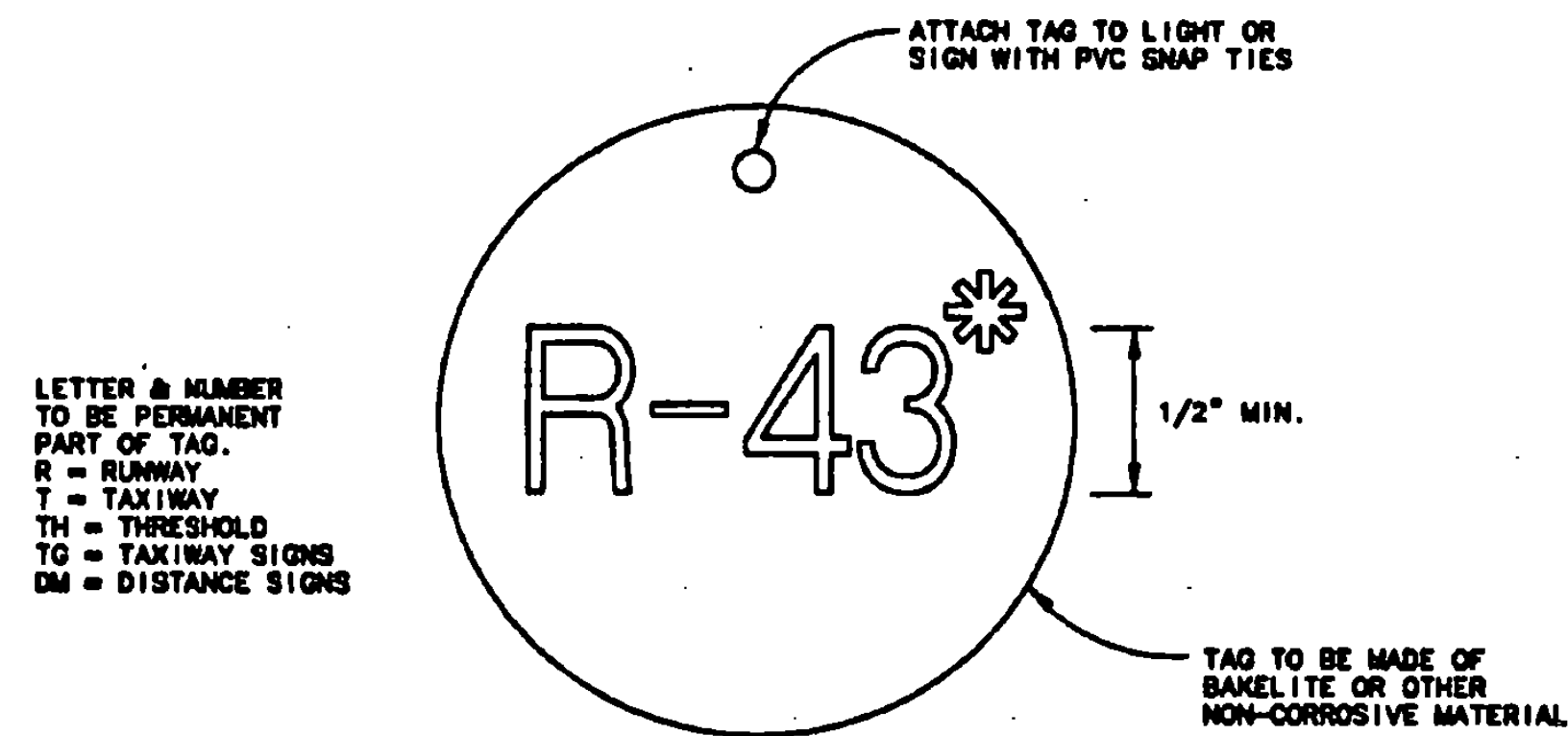
\*FINE BORROW-MATERIAL REASONABLY FREE FROM  
LOAM, CLAY OR ORGANIC MATERIAL,  
MAXIMUM SIZE = 1/2"

**CONDUIT TRENCH DETAIL (TYP)**  
NOT TO SCALE



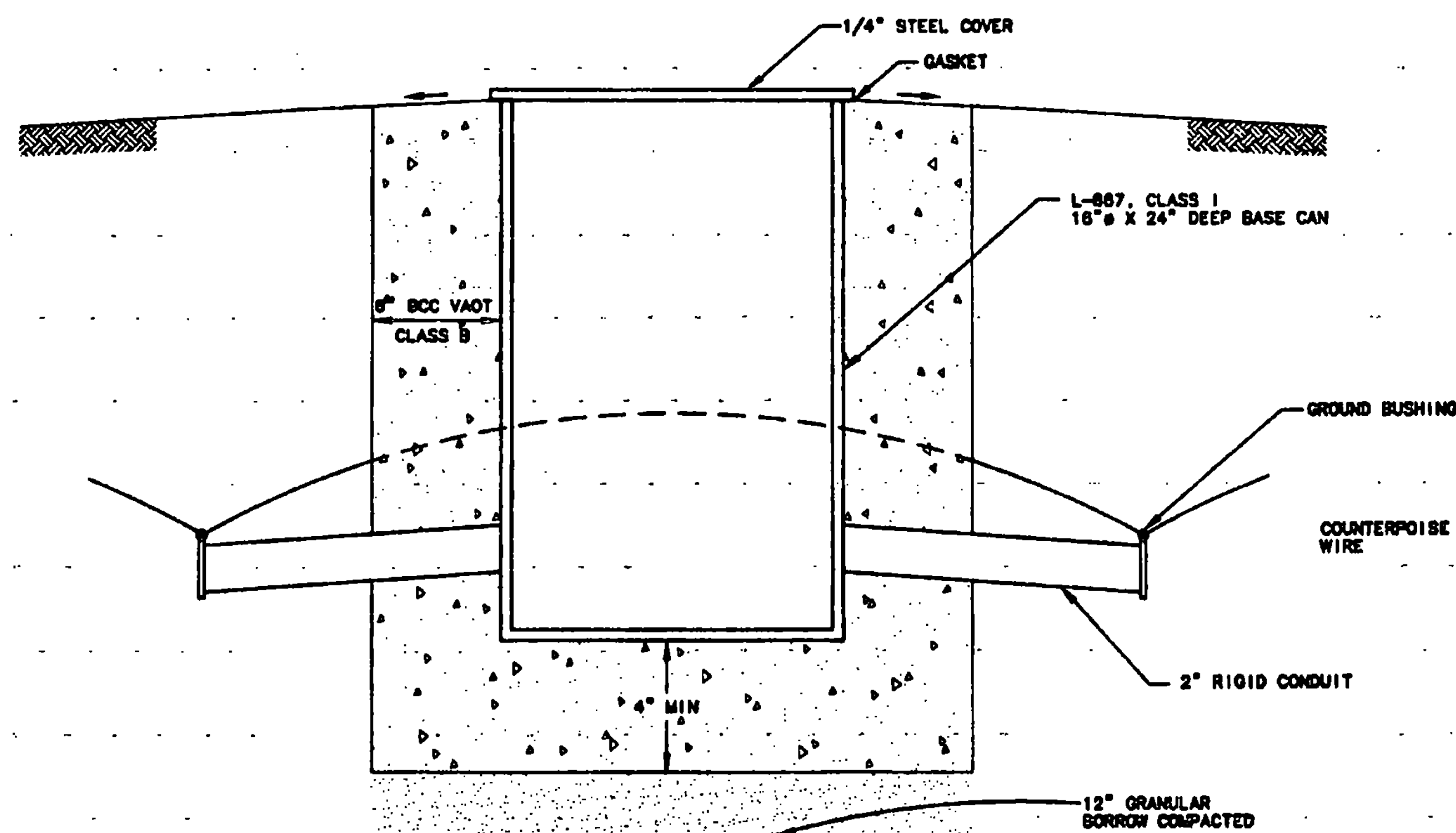
NOTE:  
1. PLACE 2" PVC CONDUIT & COUNTERPOISE  
IN EXISTING 4" PCC ENCASED DUCT.  
FULL LENGTH. USE EXISTING SPARE  
(EMPTY) DUCT IF AVAILABLE.  
2. HAND EXCAVATE AROUND EXISTING DUCT.  
EXISTING CABLES MAY BE DIRECT BURIAL.  
3. REPLACE EXISTING PCC DUCT MARKERS,  
AS SHOWN.

**CONDUIT/DUCT DETAIL (TYP)**  
NOT TO SCALE

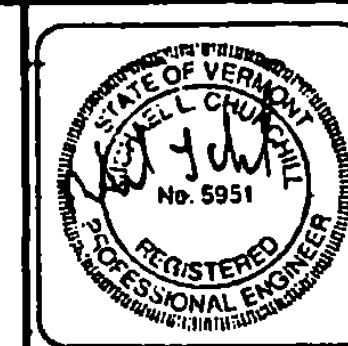


\*SEE LIGHTING PLAN FOR  
FIXTURE DELINEATION

**FIXTURE IDENTIFICATION TAG (TYP)**  
NOT TO SCALE



**ELECTRICAL HANDHOLE (TYP)**  
NOT TO SCALE



DATE	DESCRIPTION	FILE NO.

RUTLAND STATE AIRPORT  
CLARENDON, VERMONT

RUNWAY LIGHTING DETAILS

**URS Greiner, Inc.**  
3 MARCUS BOULEVARD  
ALBANY, NEW YORK

Designed by: C. D'AMICO	Date: 2/97
Drawn by: M. NICOLA	Date: 3/97
Checked by: C. D'AMICO	Date: 5/97
Approved by: M. GOSWAMI	Date: 5/97

Scale: HS = N/A  
VS = N/A

Date: 6/2/97

Sheet 32 Of 88

Sheet No  
**32**