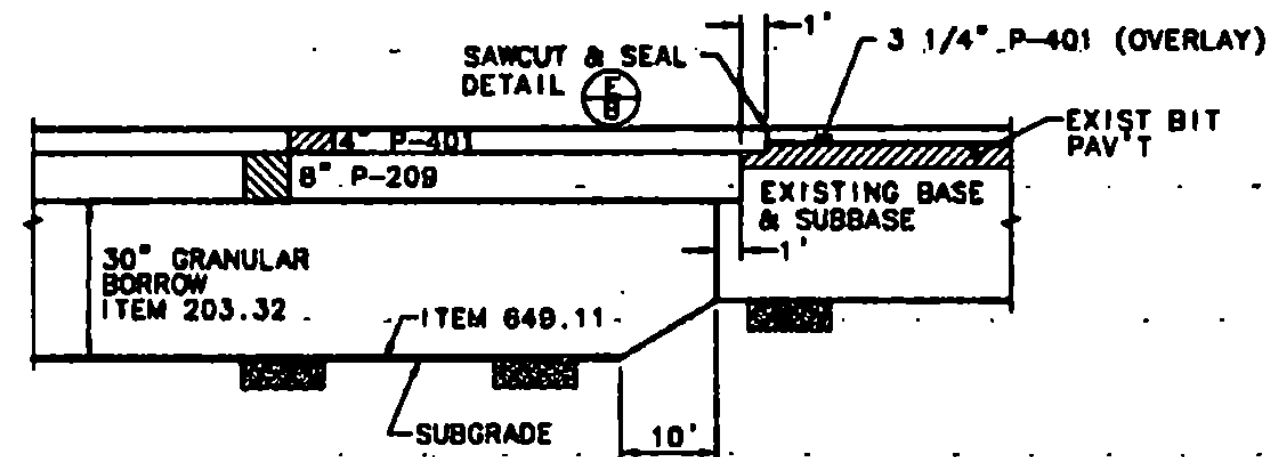
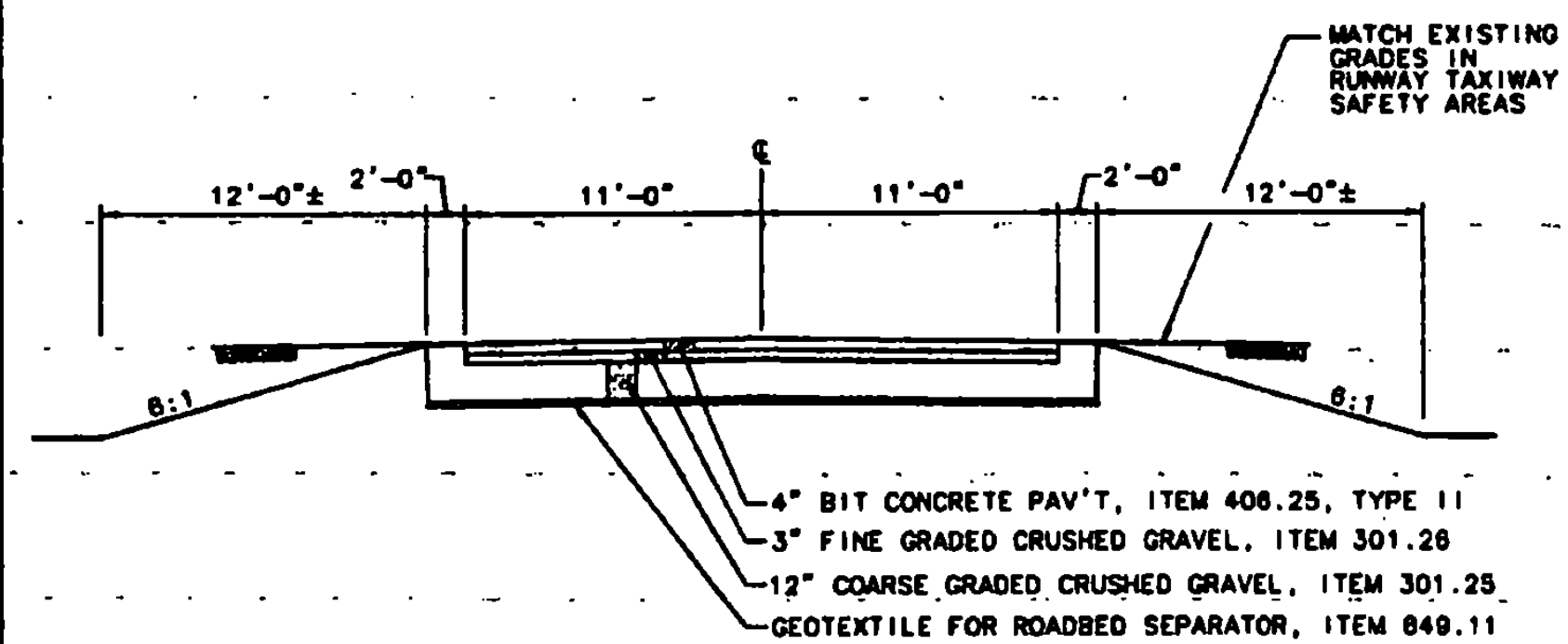


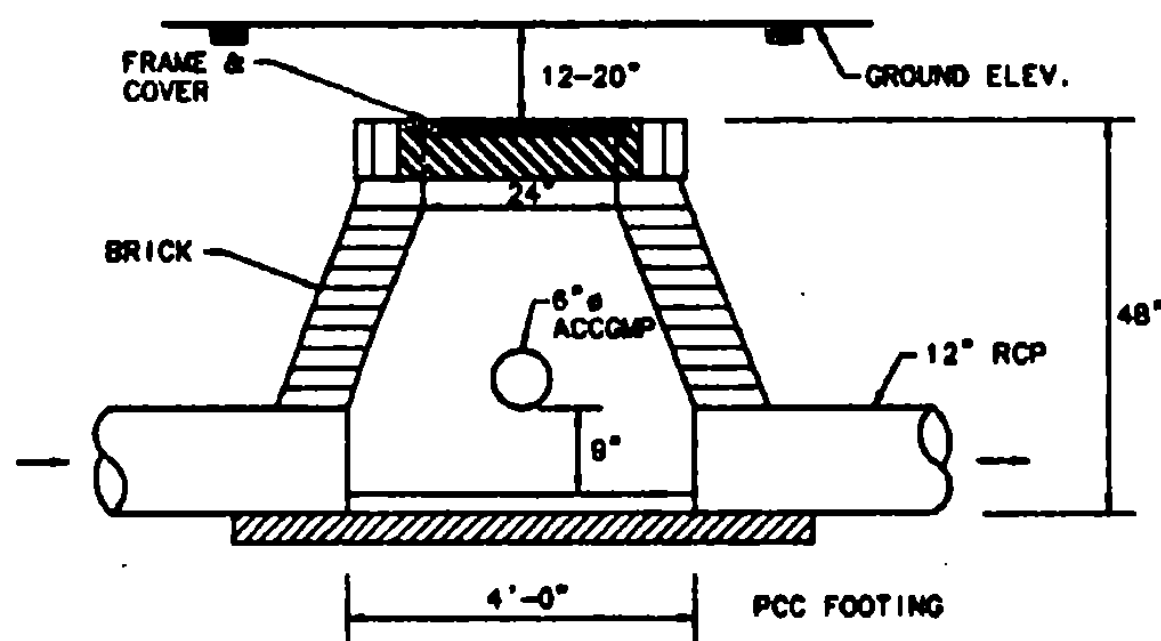
C
9 **PROPOSED SUBGRADE TRANSITION**
R/W STA 124+50 TO 125+00
T/W D STA 501+00 TO 500+50
SCALE = NONE



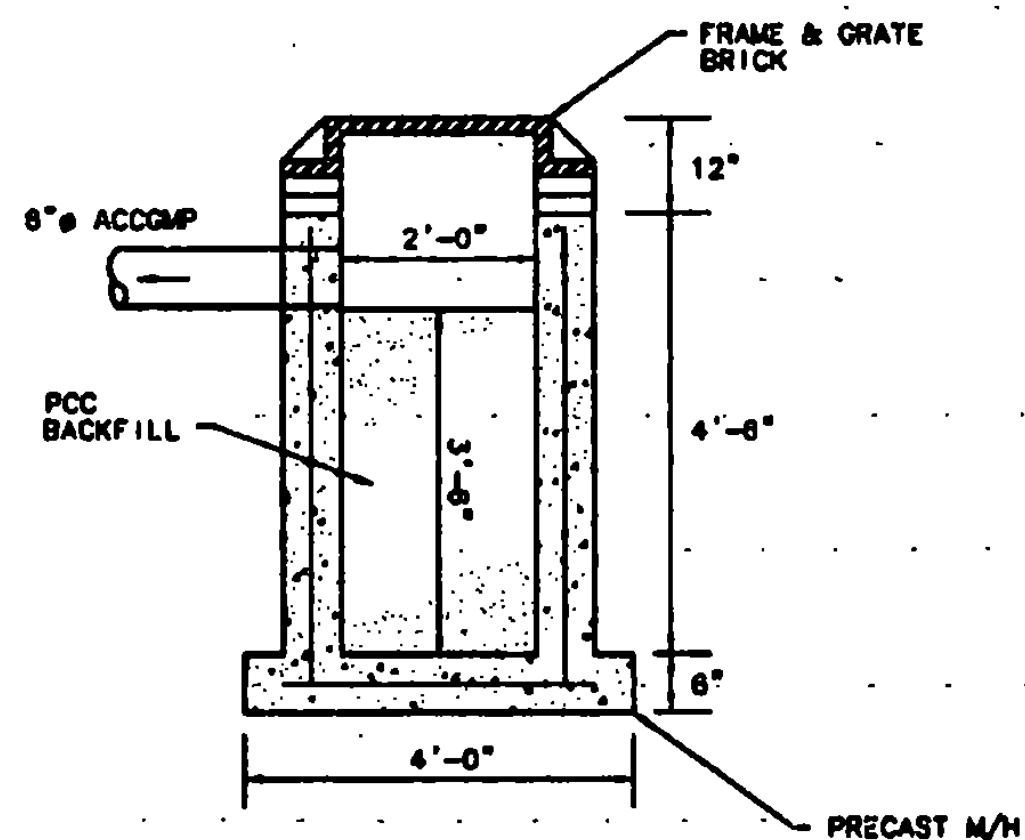
D
9 **PROPOSED SUBGRADE TRANSITION**
STA 142+00 TO 142+10
STA 149+80 TO 150+00
SCALE = NONE



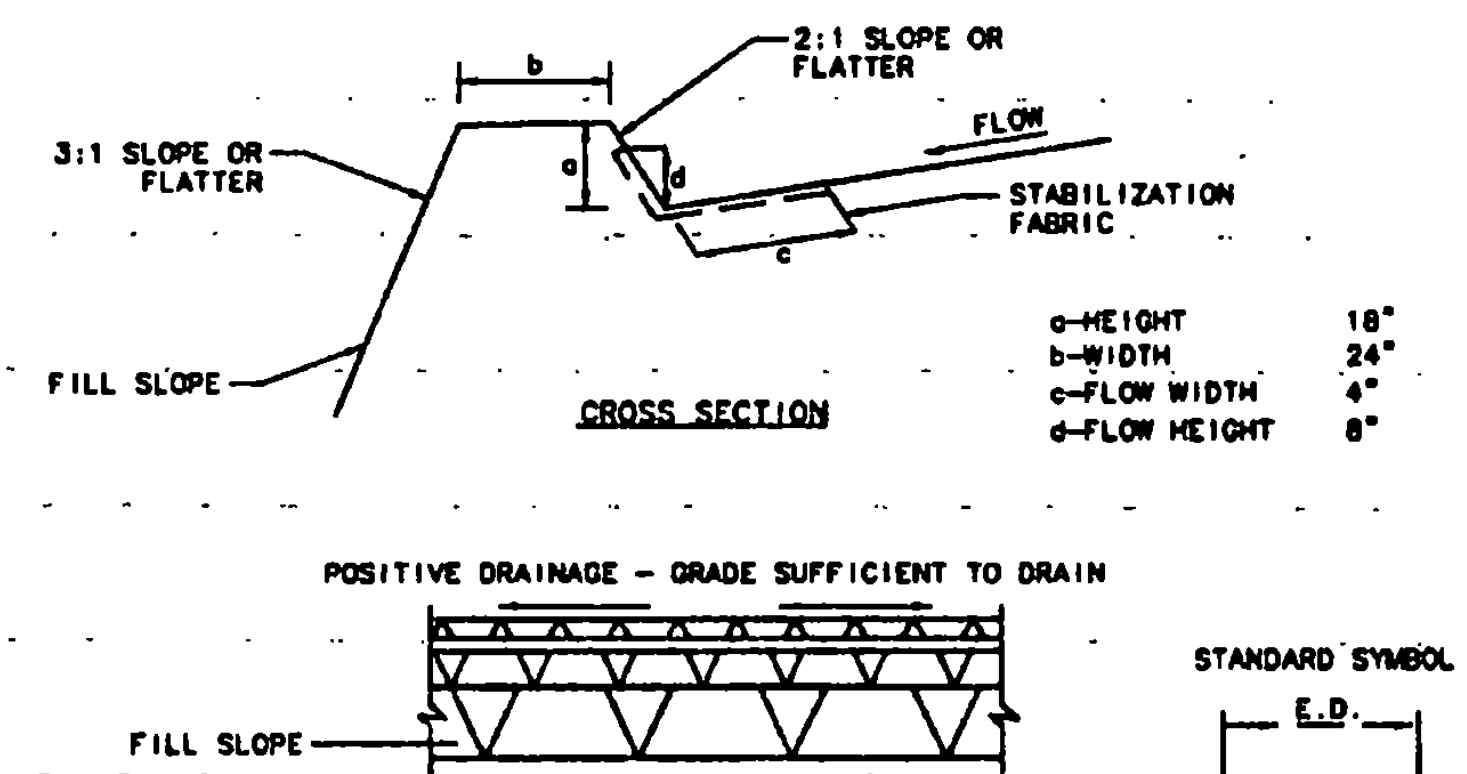
E
9 **TYPICAL DRIVEWAY SECTION**
SCALE = NONE
(DRIVE AT 508+80± RT IS 10' WIDE)
(DRIVE AT 121+80± LT REMAINS 11' WIDE)



F
9 **EXISTING MANHOLE DETAIL**
TYPICAL
SCALE = NONE

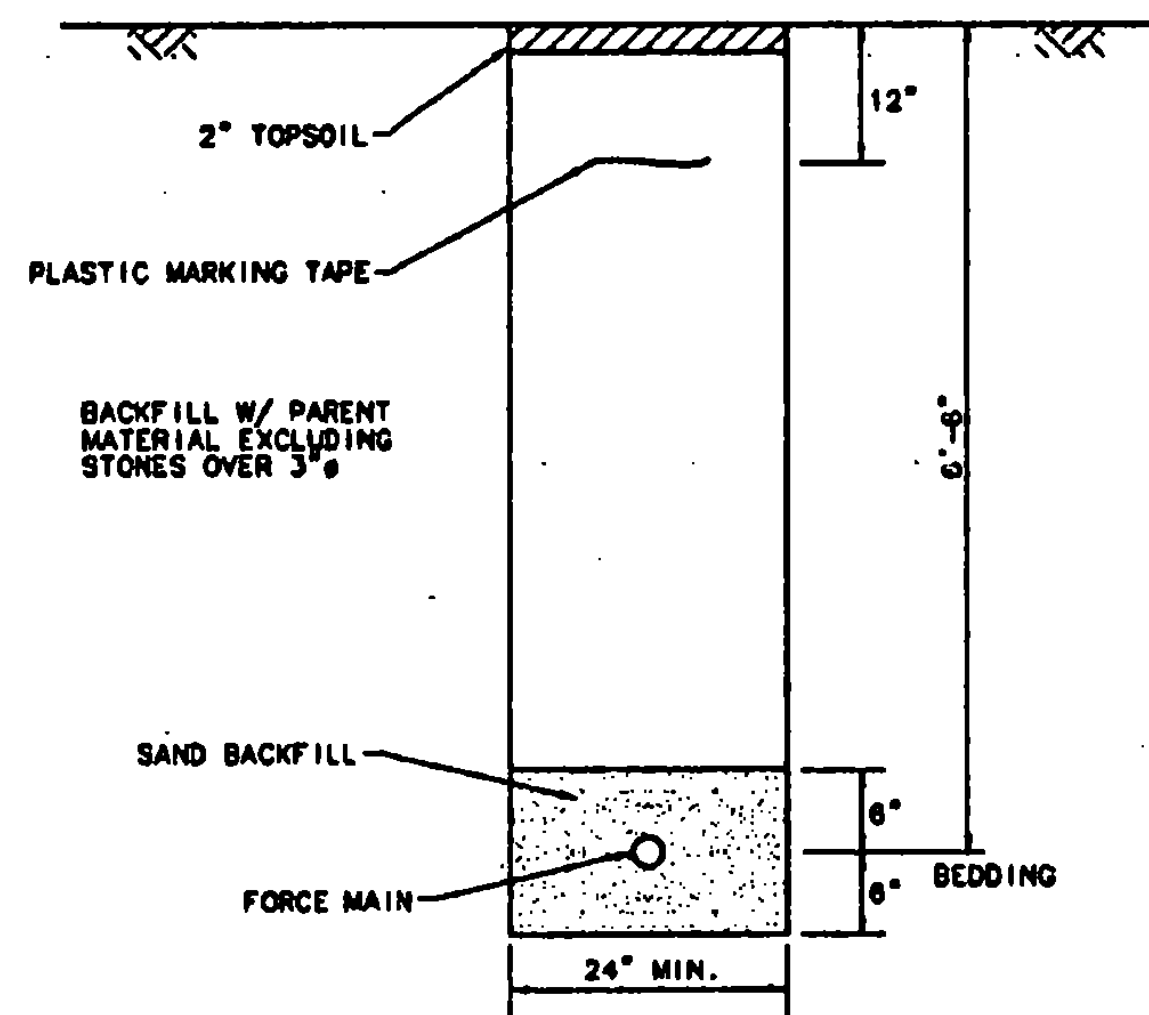


G
9 **EXISTING DROP INLETS DETAIL**
TYPICAL
SCALE = NONE

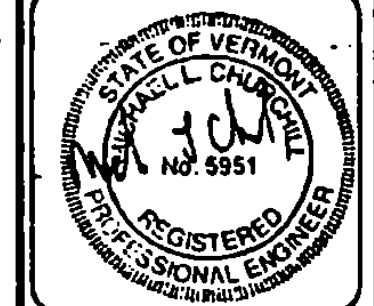


1. BERMS SHALL BE COMPACTED BY EARTH-MOVING EQUIPMENT.
2. TOP MAY BE WIDER AND SIDE SLOPES MAY BE FLATTER
3. BERMS TO BE CONSTRUCTED ALONG TOP OF SLOPE OUTSIDE RUNWAY SAFETY AREA OVERRUNS.

I
9 **EARTH BERM**
SCALE = NONE



J
9 **TRENCH DETAIL**
SCALE = NONE



REV.	DATE	DESCRIPTION

Job No. 11-10012502
File No. 11-10012502

RUTLAND STATE AIRPORT
CLARENDOON, VERMONT

TYPICAL SECTIONS & DETAILS

URS Greiner, Inc.
3 MARCUS BOULEVARD
ALBANY, NEW YORK

Designed by:	D. J. M. C.	2/97
Drawn by:	M. S. C.	3/97
Checked by:	D. J. M. C.	5/97
Approved by:	M. S. C.	5/97
Scale:	HS - AS SHOWN	VS - AS SHOWN
Date:	5/8/97	
Sheet #	Of 65	
Sheet No.		