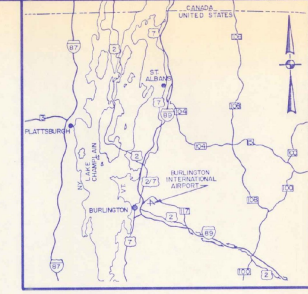


**VICINITY MAP**  
FEET 0 2000 4000 6000  
SCALE: 1" = 2000'



**LOCATION MAP**  
MILES 0 10 20  
SCALE: 1" = 10 MILES (APPROX.)

# CITY OF BURLINGTON VERMONT

## BURLINGTON INTERNATIONAL AIRPORT

### INSTALL EMERGENCY GENERATOR

AIP PROJECT NO. 3-50-0005-13

AIR 03-2068 ~~X7~~

JUNE 1988

**MAJOR ITEM QUANTITIES**

ITEM NO.	DESCRIPTION	UNIT
3-1	UNDERGROUND FUEL OIL STORAGE TANK	LUMP SUM
7-1	INSTALL DIESEL ENGINE/GENERATOR	LUMP SUM

**INDEX TO DRAWINGS**

DWG. NO.	TITLE	SHT. NO.
1	TITLE SHEET	1 OF 7
2	GENERAL PLAN	2 OF 7
3	FUEL TANK INSTALLATION AND MISC. DETAILS	3 OF 7
4	VENTILATION, PIPING AND DETAILS	4 OF 7
5	DEMOLITION PLAN - LFG. AND RECP. PLAN	5 OF 7
6	POWER PLAN	6 OF 7
7	ONE LINES AND ELEMENTARIES	7 OF 7

REGULATORY STATEMENT REGARDING COMPLIANCE  
These plans and specifications have been prepared to the best of my knowledge and belief, in accordance with current FAA Advisory Circulars as listed in AC 05-222, Chapter 1, Advisory Circulars. Certain items (designated by asterisks) require separate FAA approval and are approved by FAA letter dated \_\_\_\_\_ and are included in the project "REGULATORY STATEMENT" sheet attached project documents.  
HOYLE, TANNER & ASSOCIATES, INC.  
BY: \_\_\_\_\_ DATE: 6/8  
Registration No. \_\_\_\_\_

AIP 3-50-0005-13  
AIR 03-2068  
1988

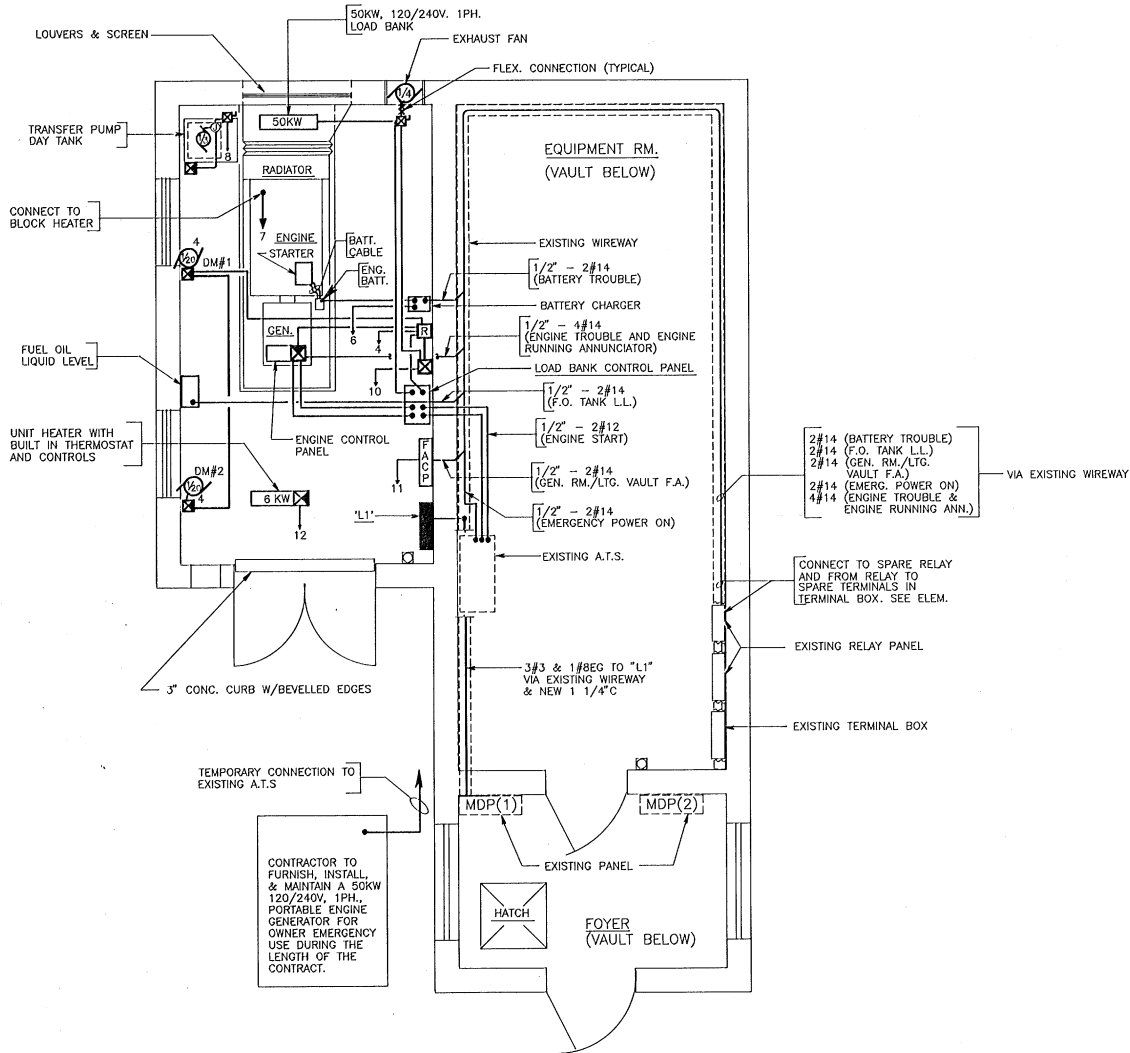
<p>CITY OF BURLINGTON, VERMONT</p> <p>APPROVED _____ DIRECTOR OF AVIATION</p> <p>DATE _____</p> <p>APPROVED _____</p> <p>DATE _____</p>	<p>VERMONT AGENCY OF TRANSPORTATION</p> <p>APPROVED _____ SECRETARY OF TRANSPORTATION</p> <p>DATE _____</p> <p>APPROVED _____ DIRECTOR OF ENGINEERING &amp; CONSTRUCTION</p> <p>DATE _____</p> <p style="font-size: 2em; opacity: 0.5; transform: rotate(-45deg); position: absolute; top: 50%; left: 50%;">NOT REQUIRED</p>	<p>U.S. DEPARTMENT OF TRANSPORTATION FEDERAL AVIATION ADMINISTRATION NEW ENGLAND REGION</p> <p>APPROVED _____ MANAGER OF AIRPORT ENGINEERING &amp; SAFETY BRANCH</p> <p>DATE _____</p> <p>APPROVAL SUBJECT TO COMMENTS AND RECOMMENDATIONS IN LETTERS.</p> <p>DATE _____</p>	<p>CITY OF BURLINGTON, VERMONT BURLINGTON INTERNATIONAL AIRPORT</p> <p>INSTALL EMERGENCY GENERATOR</p> <p style="text-align: center; font-size: 1.5em;"><b>TITLE SHEET</b></p> <p>5 COMMERCE PARK NORTH-BEDFORD, NH</p> <p>in association with:</p> <p><b>HTA</b> Hoyle, Tanner &amp; Associates, Inc. engineers/architects/planners/surveyors</p> <p><b>ABR</b> Alonzo B. Reed, Inc. architects/engineers/planners 12 FARNSWORTH ST. BOSTON, MA</p> <p>SCALE: AS SHOWN DATE: JUNE 1988 DES. BY: JBD DR. BY: CBB CHKD. BY: JBD</p> <p>PROJECT NO. 37717 SHEET OF 7 DRAWING NO. 1</p>
---	--	--	--





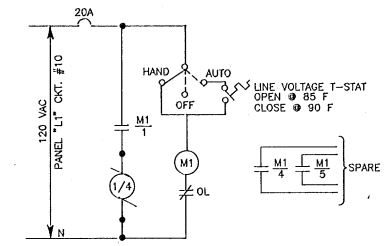




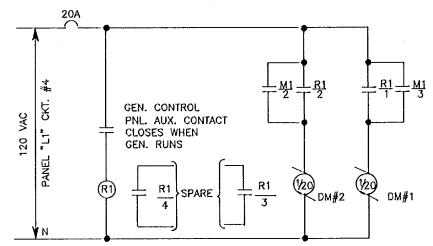


**POWER PLAN**  
SCALE: 1/2" = 1' - 0"

ENGINEER/ARCHITECT	PROJECT NO. 37717
	DATE: JUNE, 1988
	SCALE: AS SHOWN
<b>Hoyle, Tanner &amp; Associates, Inc.</b> <small>INCORPORATED IN VERMONT          Five Commerce Park North • Bedford NH 03112 • (603) 666-5556          Computer</small>	
DES. BY PAH	CHKD. BY DGF
DR. BY WDJ/JOC	
<b>BURLINGTON INTERNATIONAL AIRPORT</b> <b>SOUTH BURLINGTON, VERMONT</b> INSTALL EMERGENCY GENERATOR <b>POWER PLAN</b> <small>ELECTRICAL</small>	
DRAWING NO. 6	SHEET 6 OF 7



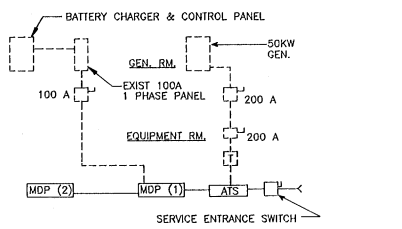
EXHAUST FAN - ELEMENTARY  
 SCALE: NONE



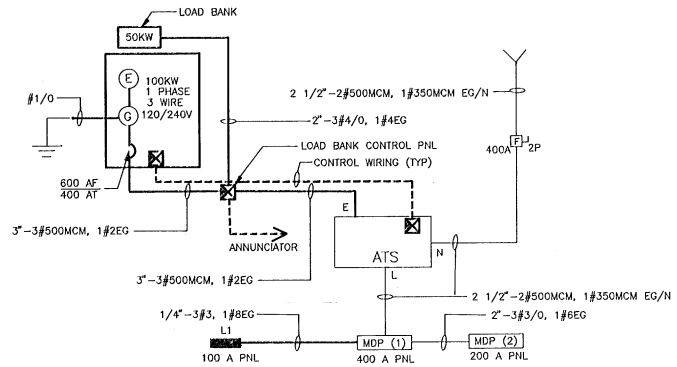
DAMPER MOTORS - ELEMENTARY  
 SCALE: NONE

LEGEND

- Ⓛ<sub>3</sub> DUPLEX RECEPTACLE NEMA CONF. 5-20R, SURFACE MOUNTED 3'-6" AFF. NUMBER DENOTES CIRCUIT NO.
- ATS AUTOMATIC TRANSFER SWITCH
- MDP(1) MAIN DISTRIBUTION PANEL
- B 12V EMERGENCY BATTERY UNIT WITH SHELF MOUNTED 7'-0" AFF
- 25WATT 12V SEAL BEAM EMERGENCY BATTERY LIGHT, MOUNTED 7'-0" AFF
- S SINGLE POLE SWITCH FOR ROOM LIGHTS. MOUNTED 4'-0" AFF
- SP SINGLE POLE SWITCH FOR EMERGENCY LIGHTS. TOGGLE HANDLE LIGHTS WHEN SWITCH IS OFF. MOUNTED IN A HANDY BOX 5'-0" AFF (UNDER EMERGENCY BATTERY).
- 4FT. SURFACE MOUNTED INDUSTRIAL FLUORESCENT LIGHTING FIXTURE WITH PORCELAIN REFLECTOR, END CAPS, 120V HIGH POWER FACTOR BALLAST & TWO F40CW LAMPS.
- Ⓜ<sub>2</sub> A.C. MOTOR - 1/3 INDICATES HORSEPOWER
- Ⓜ MAGNETIC MOTOR STARTER, 600V, 3P, NEMA SIZE 0, IN NEMA TYPE 1 ENCLOSURE, WITH H-0-A IN COVER, 120V COIL & OVERLOAD.
- Ⓜ CONTROLS BY EQUIPMENT MANUFACTURER
- Ⓜ LINE VOLTAGE THERMOSTAT RATED 10A 120V
- Ⓜ CONTACT - NORMALLY OPEN
- Ⓜ RELAY
- Ⓜ 8" X 8" X 6" NEMA TYPE 1 ENCLOSURE CONTAINING RELAY R1 RATED AT 300V, 10A, 4 N.O. CONTACTS, AND 120V COIL.
- Ⓜ MANUAL MOTOR STARTER
- FACP FIRE ALARM CONTROL PANEL-4 ZONE
- Ⓜ FIRE ALARM SMOKE DETECTOR-PHOTO ELECTRIC TYPE WITH AUDIO BASE.
- F FIRE ALARM MANUAL PULL STATION MOUNT 5'-0" AFF
- Ⓜ STORED PRESSURE HALON 1211 WALL MOUNTED FIRE EXTINGUISHER, MINIMUM RATED 10 B.C.
- EG EQUIPMENT GROUND
- N NEUTRAL
- T TRANSFORMER DRY TYPE
- HOME RUN TO PANEL LI NUMERICAL DENOTES CKT. NO.
- A ANNUNCIATOR DROP
- SAFETY SWITCH
- Ⓜ-E ENGINE/GENERATOR SET

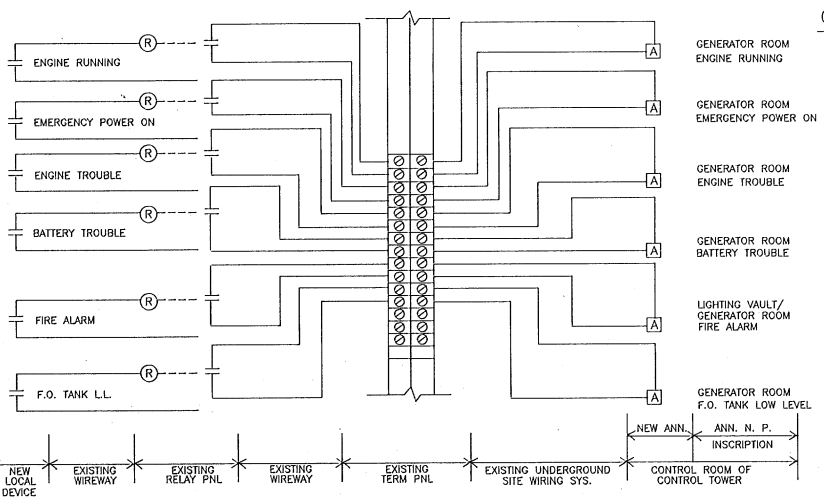


DEMOLITION - ONE LINE  
 SCALE: NONE  
 --- EQUIPMENT TO REMAIN  
 - - - EQUIPMENT TO BE REMOVED

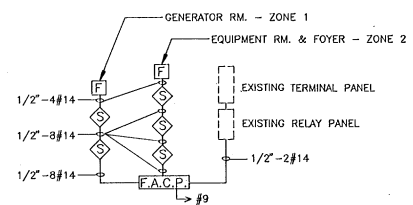


ONE LINE

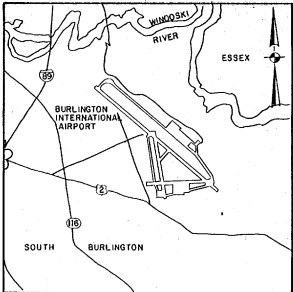
SCALE: NONE  
 --- EXISTING  
 - - - NEW



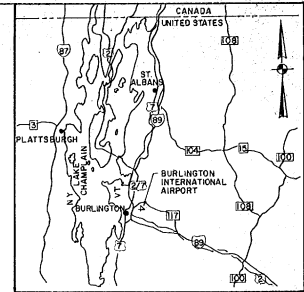
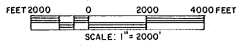
ANNUNCIATOR WIRING DIAGRAM  
 SCALE: NONE



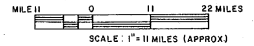
FIRE ALARM RISER DIAGRAM  
 SCALE: NONE



VICINITY MAP



LOCATION MAP



# CITY OF BURLINGTON VERMONT BURLINGTON INTERNATIONAL AIRPORT

## INSTALL 8' SECURITY FENCE

AIP PROJECT NO. 3-50-0005-13  
CONTRACT II  
SEPTEMBER, 1988

### MAJOR ITEM QUANTITIES

ITEM NO.	DESCRIPTION	UNIT	AS BUILT
F-162	8' CHAIN LINK FENCE	2500 L.F.	2568 L.F.
F-162	COILED BARBED WIRE	L.F.	0 L.F.

### INDEX TO DRAWINGS

DWG. NO.	TITLE	SHT. NO.
1	TITLE SHEET	1 OF 2
2	GENERAL PLAN	2 OF 2

RECORD DRAWINGS  
I CERTIFY THAT ALL WORK INDICATED ON THIS DRAWING HAS BEEN COMPLETED AS SHOWN.  
SIGNED: *[Signature]*  
DATE: *[Signature]* JAN 29

DESIGNER'S STATEMENT REGARDING COMPLIANCE  
THESE PLANS AND SPECIFICATIONS HAVE BEEN PREPARED TO THE BEST OF MY KNOWLEDGE AND BELIEF, IN ACCORDANCE WITH CURRENT FAA ADVISORY CIRCULARS.  
BY: *[Signature]* DATE: *[Signature]*  
BURLINGTON INTERNATIONAL AIRPORT

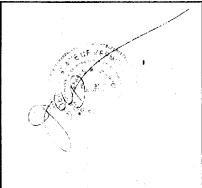
CITY OF BURLINGTON, VERMONT

APPROVED \_\_\_\_\_  
DIRECTOR OF AVIATION

DATE \_\_\_\_\_

APPROVED \_\_\_\_\_  
CHAIRMAN, BOARD OF AIRPORT COMMISSIONERS

DATE \_\_\_\_\_



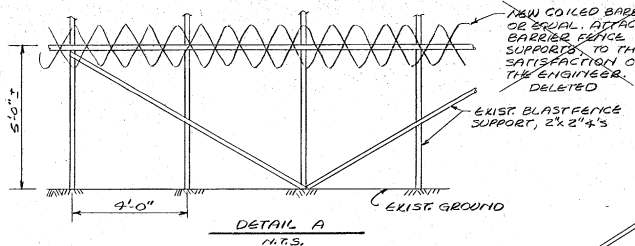
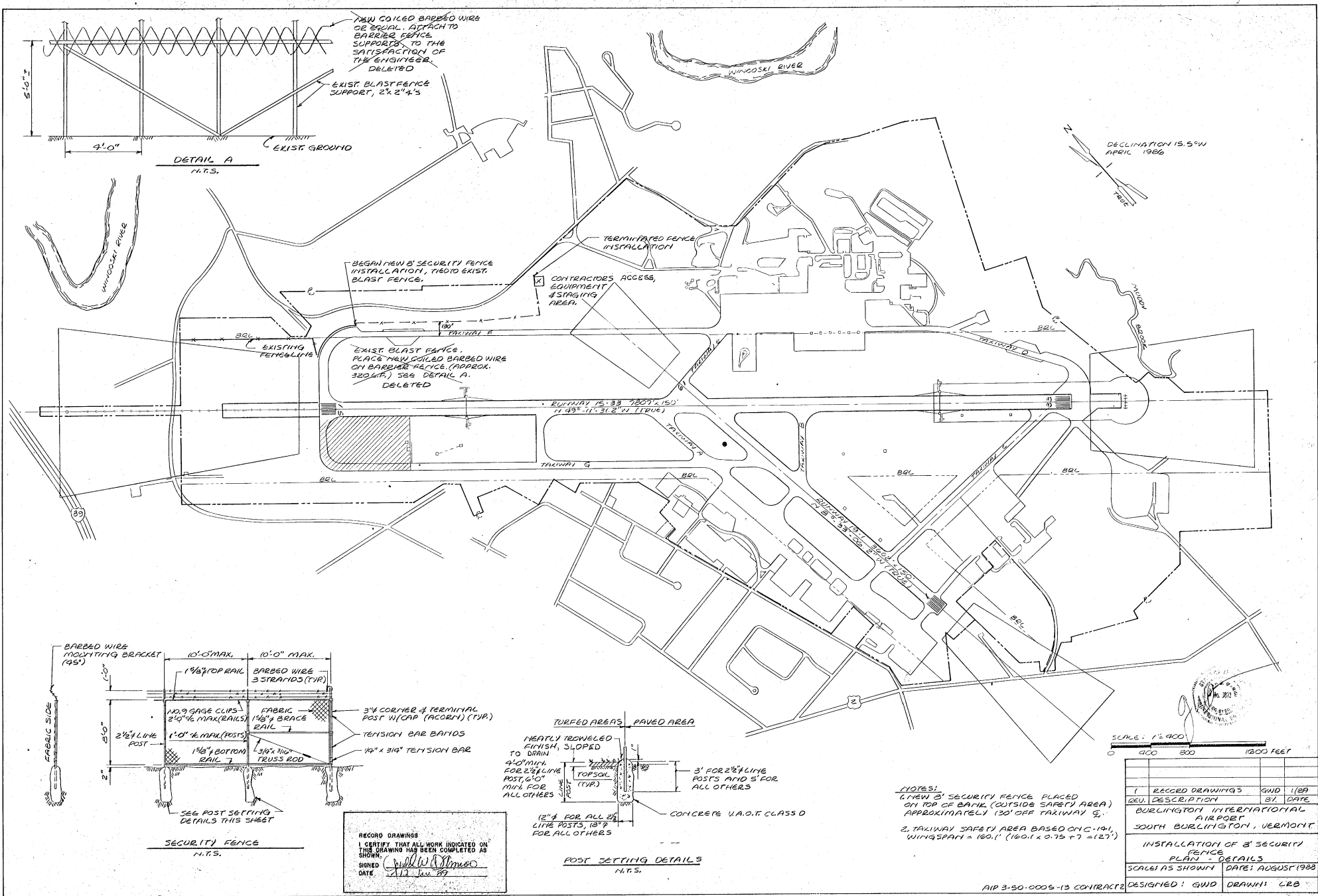
U.S. DEPARTMENT OF TRANSPORTATION  
FEDERAL AVIATION ADMINISTRATION  
NEW ENGLAND REGION

APPROVED \_\_\_\_\_  
MANAGER OF AIRPORT ENGINEERING & SAFETY BRANCH

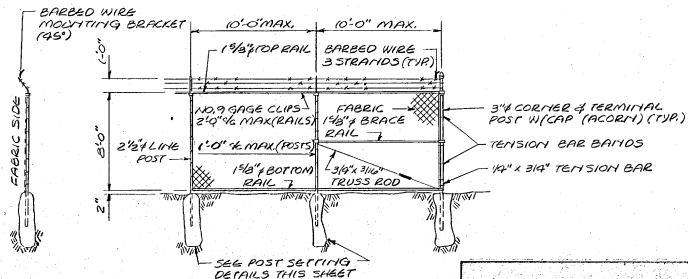
DATE \_\_\_\_\_

APPROVAL SUBJECT TO COMMENTS AND RECOMMENDATIONS IN LETTERS

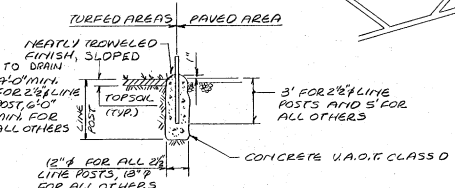
DATED \_\_\_\_\_



EXIST. BLAST FENCE. PLACE NEW COILED BARBED WIRE ON BARBED FENCE (APPROX. 320 G.P.) SEE DETAIL A. DELETED



RECORD DRAWINGS  
 I CERTIFY THAT ALL WORK INDICATED ON THIS DRAWING HAS BEEN COMPLETED AS SHOWN.  
 SIGNED: *[Signature]*  
 DATE: 1/13 Jan 87



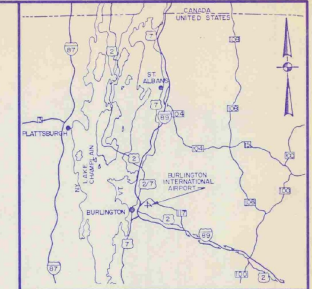
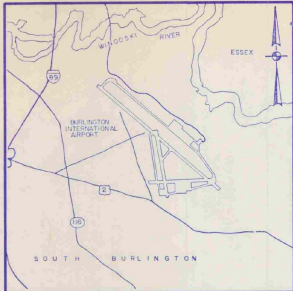
POST SETTING DETAILS  
 N.T.S.

NOTES:  
 1. NEW B SECURITY FENCE PLACED ON TOP OF BANK (OUTSIDE SAFETY AREA) APPROXIMATELY 130' OFF TAXIWAY G.  
 2. TAXIWAY SAFETY AREA BASED ON C-191, WINGSPAN = 160.1' (160.1 x 0.75 + 7 = 127')

SCALE: 1" = 100'  
 0 400 800 1200 FEET

RECORD DRAWINGS	DATE
1. RECORDED DRAWINGS	GND 1/89
2. REV. DESCRIPTION	BY DATE
BURLINGTON INTERNATIONAL AIRPORT	
SOUTH BURLINGTON, VERMONT	
INSTALLATION OF B SECURITY FENCE	
PLAN - DETAILS	
SCALE AS SHOWN	DATE: AUGUST 1988
DESIGNED: GND	DRAWN: LRB

# CITY OF BURLINGTON VERMONT



## BURLINGTON INTERNATIONAL AIRPORT

### INSTALL EMERGENCY GENERATOR

AIP PROJECT NO. 3-50-0005-13

AIR 03-2068<sup>7</sup>

JUNE 1988

#### MAJOR ITEM QUANTITIES

ITEM NO.	DESCRIPTION	UNIT
3-1	UNDERGROUND FUEL OIL STORAGE TANK	LAMP SUM
7-1	INSTALL DIESEL ENGINE/GENERATOR	LUNG SUM

#### INDEX TO DRAWINGS

DWG. NO.	TITLE	SHT. NO.
1	RIFLE SHEET	1 OF 7
2	GENERAL PLAN	2 OF 7
3	FUEL TANK INSTALLATION AND MISC. DETAILS	3 OF 7
4	VENTILATION, PIPING AND DETAILS	4 OF 7
5	DEMOLITION PLAN - LG. AND RECP. PLAN	5 OF 7
6	POWER PLAN	6 OF 7
7	ONE LINES AND ELEMENTARIES	7 OF 7

I HEREBY CERTIFY THAT ALL WORK INDICATED ON THIS DRAWING HAS BEEN COMPLETED AS SHOWN.

SIGNED: Richard S. Fayer  
DATE: 10/19/89

DESIGNER'S CERTIFICATE REGARDING COMPLIANCE  
These plans and specifications have been prepared to the best of my knowledge and belief, in accordance with current FAA Advisory Circulars as listed on the project. Change to Advisory Circular Circular 150/5230-101. Items originating from the FAA that were approved by FAA letter's cases from the FAA are included in the project engineering reports (SERIES 1000) official project documents.

WORLD, PANNER & ASSOCIATES, INC.  
BY: \_\_\_\_\_ DATE: 10/19/89  
Registration No. \_\_\_\_\_

OCT 10 1989

"AS BUILT"

CITY OF BURLINGTON, VERMONT APPROVED _____ DIRECTOR OF AVIATION DATE _____ APPROVED _____ DATE _____	VERMONT AGENCY OF TRANSPORTATION APPROVED _____ SECRETARY OF TRANSPORTATION DATE _____ APPROVED _____ DIRECTOR OF ENGINEERING & CONSTRUCTION DATE _____	U.S. DEPARTMENT OF TRANSPORTATION FEDERAL AVIATION ADMINISTRATION NEW ENGLAND REGION APPROVED _____ MANAGER OF AIRPORT ENGINEERING & SAFETY BRANCH DATE _____ APPROVAL SUBJECT TO COMMENTS AND RECOMMENDATIONS IN LETTERS. DATE: _____	REVISED "AS BUILT"	CITY OF BURLINGTON, VERMONT BURLINGTON INTERNATIONAL AIRPORT INSTALL EMERGENCY GENERATOR
			HIA Hoyle, Tanner & Associates, Inc. engineers/architects/planners/surveyors 5 COMMERCIAL PARK NORTH • BEDFORD, NH	TITLE SHEET
In association with: ABR Alonzo B. Reed, Inc. architects/engineers/planners 12 FARNSWORTH ST. • BOSTON, MA			SCALE: AS SHOWN DATE: JUNE 1988 DES. BY: JBD DR. BY: CBB CHK. BY: JBD	PROJECT NO. 37717 SHEET OF 17 DRAWING NO. 1





DATE	BY	DESCRIPTION
10/9/88	JDC	REVISED "AS-BUILT"

PROJECT NO.  
**37717**

Hoyle, Tamer & Associates, Inc. **HTA**  
INCORPORATED  
Five Commerce Park North - Bedford NH 03102 - (603) 869-5555

SCALE AS SHOWN DATE: JUNE, 1988

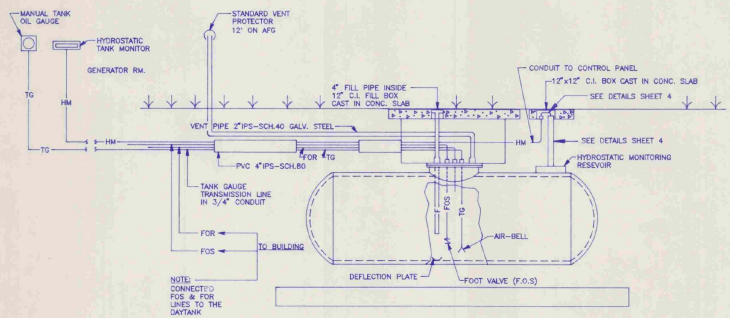
SEE BY: JDC  
 DR BY: WLD  
 CHD BY: DGF

**BURLINGTON INTERNATIONAL AIRPORT**  
**SOUTH BURLINGTON, VERMONT**  
**FUEL TANK INSTALLATION**  
**& MISC. DETAILS**  
ARCHITECTURAL/STRUCTURAL

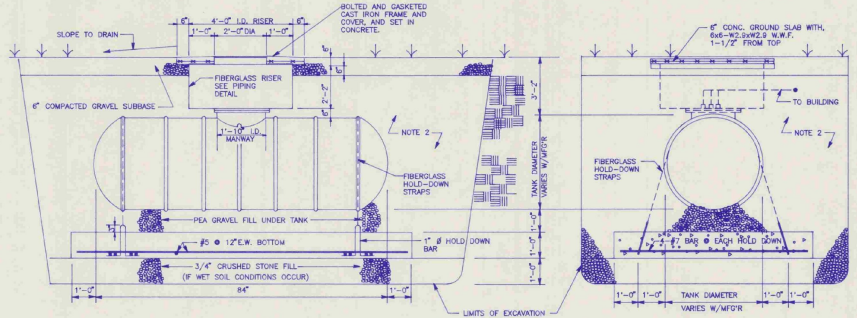
DRAWING NO.  
**3**

SHEET 3 OF 7

DO NOT SCALE DRAWING



MECHANICAL PIPING DETAIL  
NO SCALE



SIDE VIEW  
 END VIEW  
 UNDERGROUND FUEL OIL TANK DETAILS  
 NO SCALE

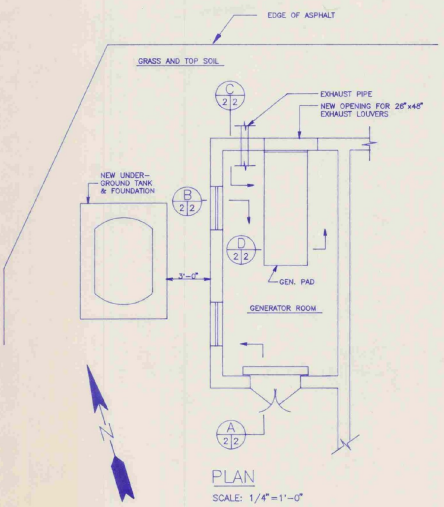
**GENERAL NOTES**

1. NEW TANK IS BE 550 GAL. MINIMUM; DOUBLE WALL FIBERGLASS. PROVIDED NEW PIPING FROM TANK TO GENERATOR ROOM
2. BACKFILLED ENTIRE EXCAVATION, EXCEPT WHERE OTHERWISE NOTED, WITH 1/8\"/>

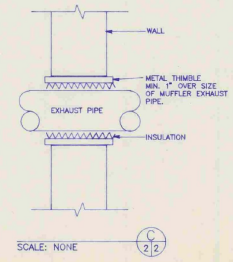
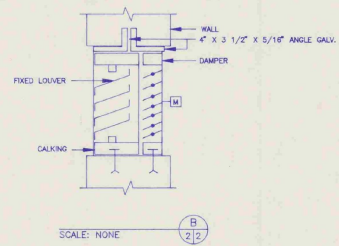
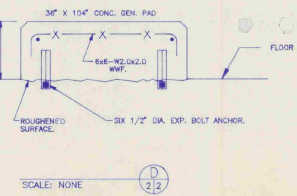
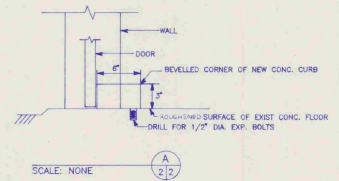
**LEGEND**

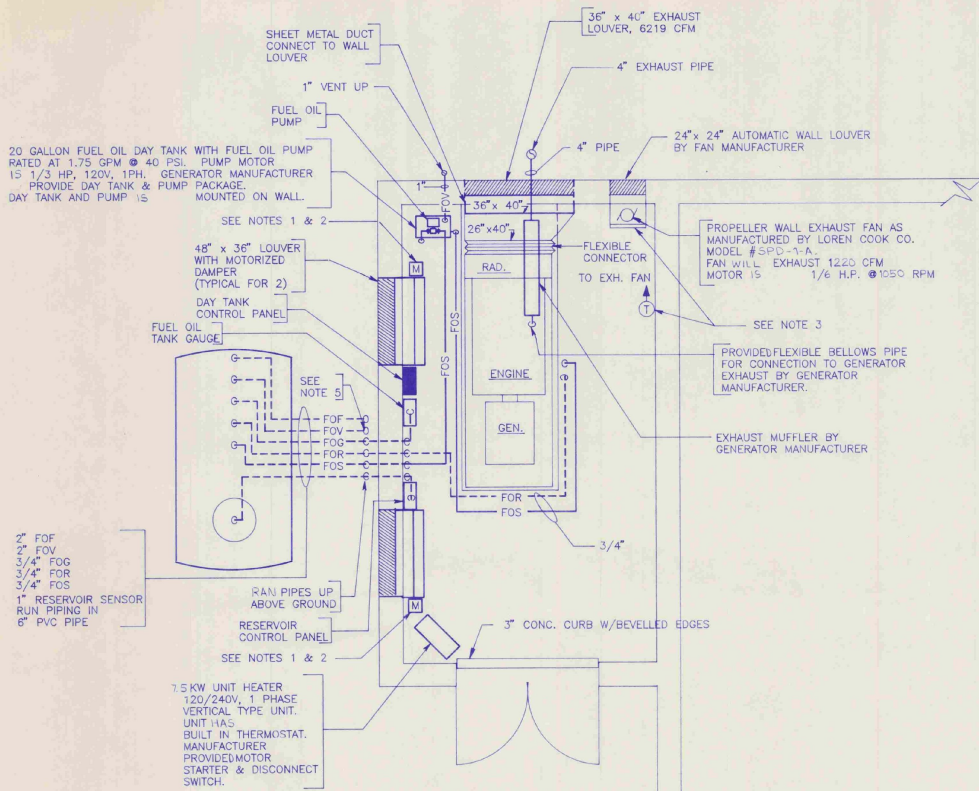
- FOS— FUEL OIL SUPPLY
- FOR— FUEL OIL RETURN
- F— FILL PIPE
- V— VENT PIPE
- TG— TANK GAUGE LINE
- HM— HYDROSTATIC MONITORING

I HEREBY CERTIFY THAT ALL WORK INDICATED ON THIS DRAWING HAS BEEN COMPLETED AS SHOWN.  
 SIGNED: *Edward J. Fagan*  
 DATE: 10/9/88



PLAN  
SCALE: 1/4"=1'-0"





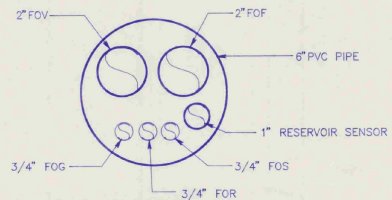
**NOTES:**

1. MOTOR OPERATOR FOR DAMPER IS NORMALLY OPEN. DAMPER WILL BE CLOSED UNDER NORMAL OPERATION. PROVIDED SPRING RETURN ON MOTOR OPERATOR TO OPEN DAMPER WHEN THERE IS A POWER FAILURE.
2. MOTOR OPERATOR FOR DAMPER IS INTERLOCKED WITH THE WALL EXHAUST FAN TO OPEN WHEN EXHAUST FAN STARTS.
3. ELECTRIC WALL THERMOSTAT WILL ENERGIZE EXHAUST FAN WHEN SPACE TEMPERATURE IS 90° F OR ABOVE.
4. ALL LOUVERS HAVE BIRD SCREENS AND INSECT SCREENS.
5. FUEL OIL VENT RISERS 12'-0" ABOVE FINISHED FLOOR.

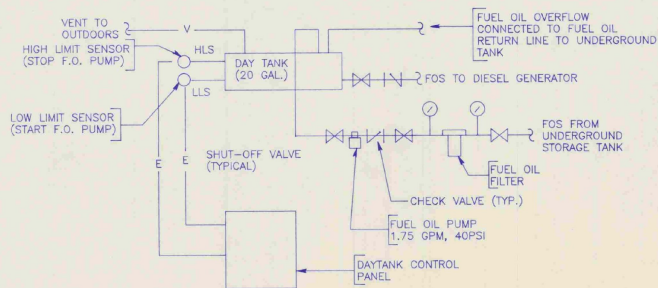
**VENTILATION - PIPING PLAN**  
SCALE: 1/2" = 1'-0"

**LEGEND**

- PIPE TURNED UP
- ◡ PIPE TURNED DOWN
- ▭ WALL LOUVER
- M MOTORIZED DAMPER
- BD BACKDRAFT DAMPER
- FOS FUEL OIL SUPPLY
- FOR FUEL OIL RETURN
- FOF FUEL OIL FILL
- FOV FUEL OIL VENT
- FOG FUEL OIL GAUGE




**TYPICAL UNDERGROUND PIPING DETAIL**  
SCALE: NONE



**FUEL OIL PIPING SCHEMATIC**  
SCALE: NONE

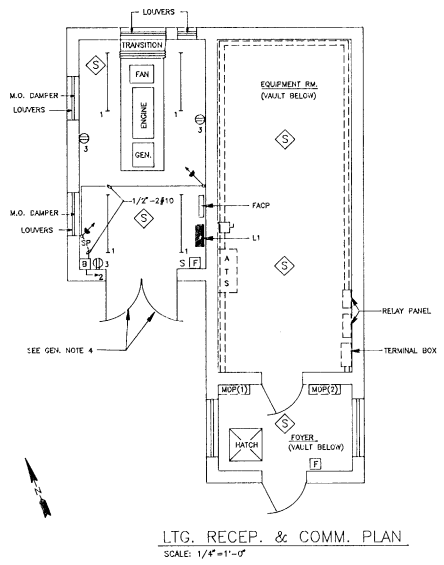
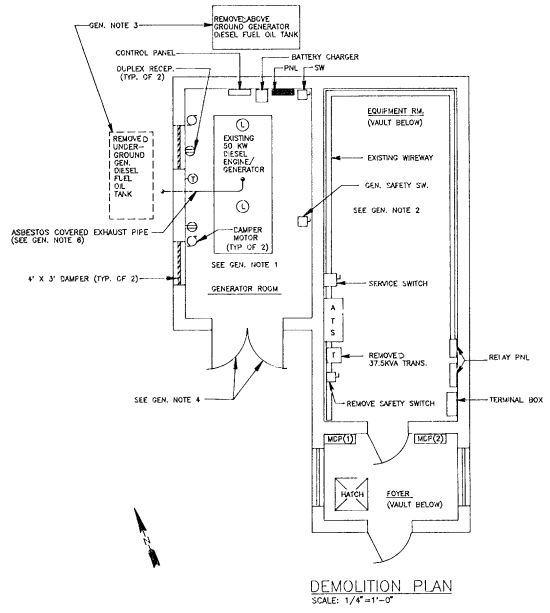
I HEREBY CERTIFY THAT ALL WORK INDICATED ON THIS DRAWING HAS BEEN COMPLETED AS SHOWN.  
SIGNED: *Richard L. Foy*  
DATE: 10/1/89

ENGINEER/ARCHITECT	
 <i>R. Foy</i>	
PROJECT NO.	DATE
37717	JUNE, 1988
HOYLE, TANNER & ASSOCIATES, INC. <small>Five Commerce Park North Bedford NH 03102 (603) 868-5555</small>	DESIGNED BY: RLR CHECKED BY: WDJ/JUC DRAWN BY: DGP
<b>BURLINGTON INTERNATIONAL AIRPORT</b> <b>SOUTH BURLINGTON, VERMONT</b> <b>INSTALL EMERGENCY GENERATOR</b> <b>VENTILATION, PIPING &amp; DETAILS</b>	
DRAWING NO.	
4	
SHEET 4 OF 7	

**"AS BUILT"**

GENERAL NOTES

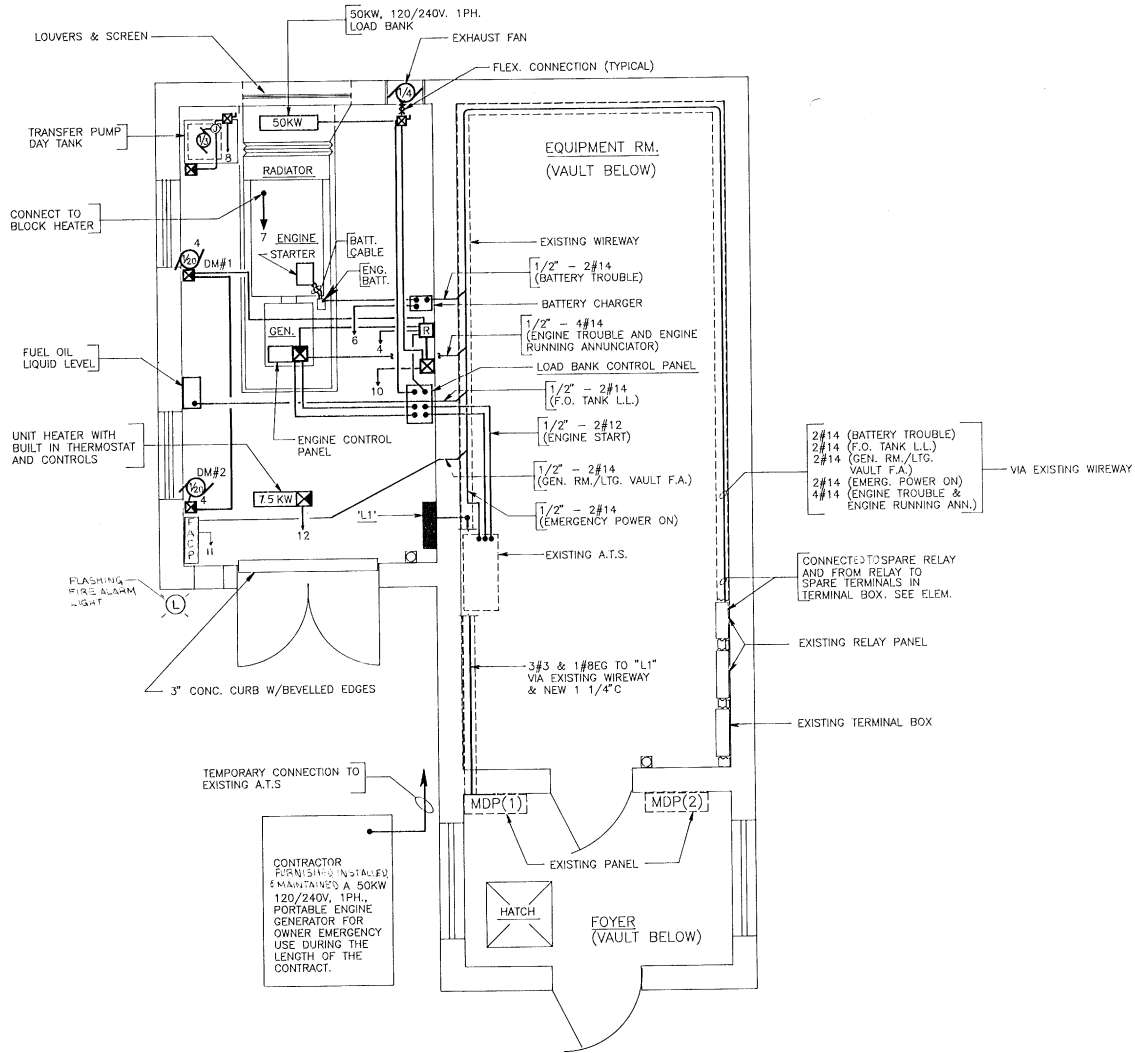
1. REMOVE EXISTING ENGINE/GENERATOR, PAD, PANEL, BATTERY CHARGE, CONTROL PANEL, LIGHTING FIXTURES, RECEPTACLES, SWITCHES, BRANCH CIRCUITS, DAMPERS, DAMPER MOTORS, CONTROL CONDUIT, FEEDERS AND FEEDER CONDUITS FROM GENERATOR ROOM. (SEE ONE LINE DIAG. SH. 2)
2. REMOVE EXISTING GENERATOR SAFETY SWITCH, TRANSFORMER, FEEDER AND CONDUITS. REMOVE GENERATOR ROOM PANEL FEEDER FROM EXISTING WIRE WAY. SERVICE SWITCH, ATS, MIP (1), MIP (2) AND OTHER AIRFIELD LIGHTING EQUIPMENT NOT SHOWN REMAINED. (SEE ONE LINE DIAG. SH. 7)
3. EXISTING GENERATOR FUEL OIL TANKS, PIPING AND PETROLEUM CONTAMINATED SOIL REMOVED AND PROPERLY DISPOSED OF IN ACCORDANCE WITH EPA GUIDELINES AND REGULATIONS CERTIFIED REPORTS OF ROUTING AND FINAL DISPOSAL OF EQUIPMENT.
4. CONTRACTOR REMOVE TWO EXISTING 30" X 84" LOUVERED DOORS. DOOR FRAME REMAINED FOR RE-USE. CONTRACTOR FURNISH AND INSTALL TWO NEW FIRE RATED DOORS.
5. WHEN REMOVING THE EXISTING GENERATOR AND CONCRETE PAD, REMOVE THE EXISTING SYSTEM GROUNDING CONDUCTOR, WAGS RECONNECTED TO THE NEW GENERATOR.
6. EXISTING ASBESTOS COVERED EXHAUST PIPE WAS REMOVED AND PROPERLY DISPOSED OF IN ACCORDANCE WITH EPA AND LOCAL AUTHORITIES REGULATIONS. THIS INCLUDES CERTIFIED REPORTS OF ROUTING AND FINAL DISPOSAL OF MATERIAL.
7. ALL CONDUITS WITH 60 HZ POWER CIRCUITS SHALL HAVE A GREEN EQUIPMENT GROUND (EG) CONDUCTOR SIGNAL IN ACCORDANCE WITH THE NEC.
8. REMOVE ASBESTOS CEILING MATERIALS AND INSTALL NEW AL PLYWOOD CEILING.



MANS: 100 AMP		BUS: <input type="checkbox"/> AL <input checked="" type="checkbox"/> CU		MOUNTING: <input type="checkbox"/> FLUSH <input checked="" type="checkbox"/> SURFACE		CHARACTERISTICS: 120/240 VOLTS		LOADS:						
<input type="checkbox"/> MILD		<input checked="" type="checkbox"/> MAIN CKT BKR		<input type="checkbox"/> TOP		<input checked="" type="checkbox"/> 1 PHASE 3 WIRE		REMARKS: SHORT CKT I.C. OF BRKS: 10,000 AMPS. SYM. MIN.						
<input type="checkbox"/> TOP		<input checked="" type="checkbox"/> BOTTOM		<input type="checkbox"/> BOTTOM		PANEL: L1								
<input checked="" type="checkbox"/> SOLID NEUT (ISOLATED)		FR 100		IR 100		CLASS N.A.								
<input checked="" type="checkbox"/> GND BUS		POLES 2												
CKT NO.	P	F	T	ISOLATED NEUTRAL			GROUND BUS			CKT NO.				
				DESCRIPTION	WIRE SIZE	COND	DESCRIPTION	WIRE SIZE	COND					
1	1	100	20	ROOM LIGHTING	12AWG	3/4"	3/4"	12AWG	EMERGENCY BATTERY	20	100	1	2	
3	1	100	20	ROOM RECEPTACLE	12AWG	3/4"	3/4"	12AWG	M.O. DAMPERS	20	100	1	4	
5	1	100	20	ROOM RECEPTACLE	12AWG	3/4"	3/4"	12AWG	BATTERY CHARGER	20	100	1	6	
7/9	2	100	30	ENGINE BLOCK HEATER	10AWG	3/4"	3/4"	12AWG	DAY TANK FUEL OIL PUMP	20	100	1	8	
11	1	100	20	FIRE ALARM CONTROL PANEL	12AWG	3/4"	3/4"	12AWG	EXHAUST FAN	20	100	1	10	
13	1	100	20	SPARE				3/4"	10AWG	UNIT HEATER 7.5 KW	40	100	2	14
15	1	100	20	SPARE							20	100	1	16
17	1			SPARE							20	100	1	18
19	1			SPARE										20
21	1			SPARE										22
23	1			SPARE										24

I HEREBY CERTIFY THAT ALL WORK INDICATED ON THIS DRAWING HAS BEEN COMPLETED AS SHOWN.  
 SIGNED: *Richard J. Fife*  
 DATE: 10/1/89

"AS BUILT"



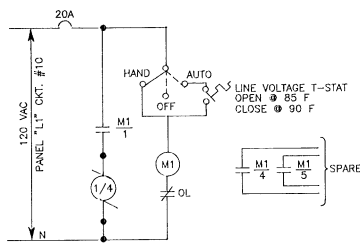
POWER PLAN  
SCALE: 1/2" = 1' - 0"

I HEREBY CERTIFY THAT ALL WORK INDICATED ON THIS DRAWING HAS BEEN COMPLETED AS SHOWN.  
SIGNED: *Richard S. Fife*  
DATE: 10/21/01

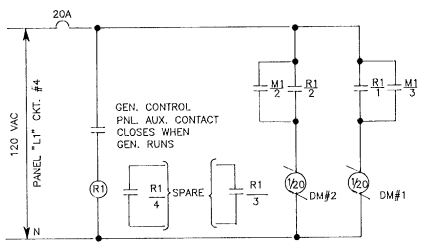
"AS BUILT"

ENGINEER/ARCHITECT	
<i>Richard S. Fife</i>	
PROJECT NO.	37717
SCALE	AS SHOWN
DATE	JUNE, 1988
DES. BY	PAH
CHK. BY	WD, JOC
DATE	JUNE, 1988
CON. BY	DGF
DATE	
REV.	
DESCRIPTION	
BY	
DATE	
BURLINGTON INTERNATIONAL AIRPORT SOUTH BURLINGTON, VERMONT INSTALL EMERGENCY GENERATOR <b>POWER PLAN</b> ELECTRICAL	
DRAWING NO.	6
SHEET	6 OF 7

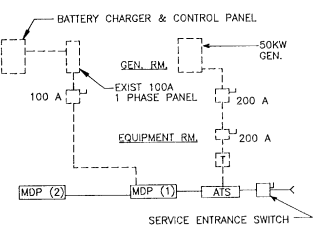
DO NOT SCALE DRAWING



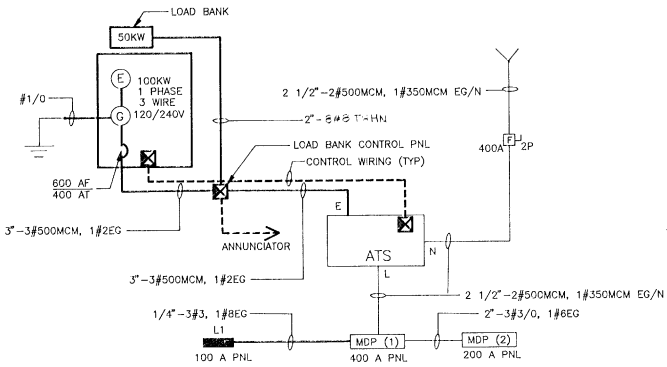
EXHAUST FAN - ELEMENTARY  
 SCALE: NONE



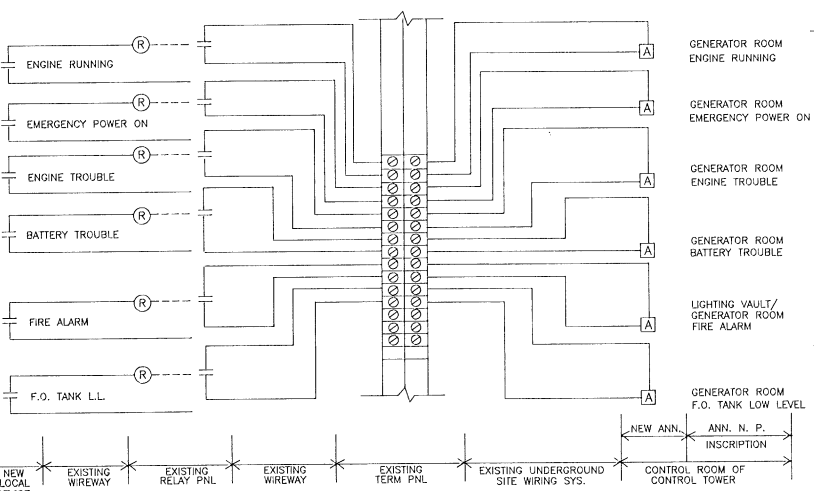
DAMPER MOTORS - ELEMENTARY  
 SCALE: NONE



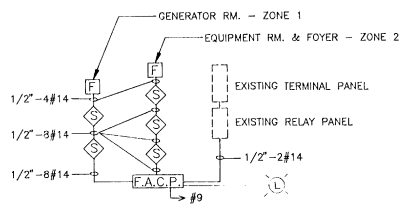
DEMOLITION - ONE LINE  
 SCALE: NONE  
 --- EQUIPMENT TO REMAIN  
 - - - EQUIPMENT TO BE REMOVED



ONE LINE  
 SCALE: NONE  
 --- EXISTING  
 --- NEW



ANNUNCIATOR WIRING DIAGRAM  
 SCALE: NONE

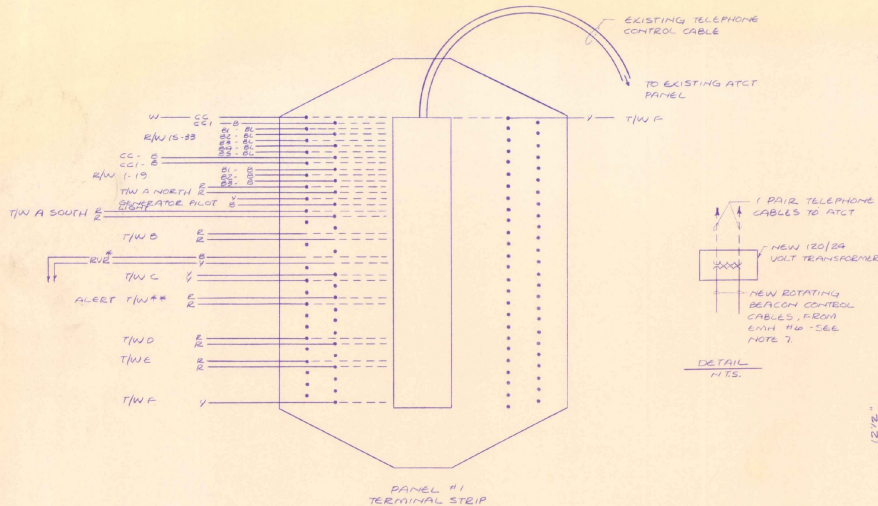


FIRE ALARM RISER DIAGRAM  
 SCALE: NONE

- LEGEND**
- Ⓛ<sub>3</sub> DUPLEX RECEPTACLE NEMA CONF. 5-20R. SURFACE MOUNTED 3"-6" AFF. NUMBER DENOTES CIRCUIT NO.
  - ATS AUTOMATIC TRANSFER SWITCH
  - MDP(1) MAIN DISTRIBUTION PANEL
  - B 12V EMERGENCY BATTERY UNIT WITH SHELF MOUNTED 7"-0" AFF
  - 25WATT 12V SEAL BEAM EMERGENCY BATTERY LIGHT. MOUNTED 7"-0" AFF
  - S SINGLE POLE SWITCH FOR ROOM LIGHTS. MOUNTED 4"-0" AFF
  - SP SINGLE POLE SWITCH FOR EMERGENCY LIGHTS. TOGGLE HANDLE LIGHTS WHEN SWITCH IS OFF. MOUNTED IN A HANDY BOX 5"-0" AFF (UNDER EMERGENCY BATTERY).
  - 4FT. SURFACE MOUNTED INDUSTRIAL FLUORESCENT LIGHTING FIXTURE WITH PORCELAIN REFLECTOR, END CAPS, 120V HIGH POWER FACTOR BALLAST & TWO F40CW LAMPS.
  - 1/3 A.C. MOTOR - 1/3 INDICATES HORSEPOWER
  - Ⓜ MAGNETIC MOTOR STARTER, 600V, 3P, NEMA SIZE 0, IN NEMA TYPE 1 ENCLOSURE. WITH H-0-A IN COVER, 120V COIL & OVERLOAD.
  - Ⓜ CONTROLS BY EQUIPMENT MANUFACTURER
  - T LINE VOLTAGE THERMOSTAT RATED 10A 120V
  - Ⓡ RELAY
  - Ⓡ 8" X 8" X 6" NEMA TYPE 1 ENCLOSURE CONTAINING RELAY R1 RATED AT 300V, 10A, 4 N.O. CONTACTS, AND 120V COIL.
  - M MOTOR STARTER
  - FAGP FIRE ALARM CONTROL PANEL-4 ZONE
  - Ⓢ FIRE ALARM SMOKE DETECTOR-PHOTO ELECTRIC TYPE WITH AUDIO BASE.
  - F FIRE ALARM MANUAL PULL STATION MOUNT 5"-0" AFF
  - Ⓢ STORED PRESSURE HALON 1211 WALL MOUNTED FIRE EXTINGUISHER. MINIMUM RATED TO B.C.
  - EG EQUIPMENT GROUND
  - N NEUTRAL
  - T TRANSFORMER DRY TYPE
  - 2 HOME RUN TO PANEL L1 NUMERICAL DENOTES CKT. NO.
  - A ANNUNCIATOR DROP
  - Ⓜ SAFETY SWITCH
  - Ⓢ-E ENGINE/GENERATOR SET
  - Ⓢ EXTERIOR FIRE ALARM LIGHT

I HEREBY CERTIFY THAT ALL WORK INDICATED ON THIS DRAWING HAS BEEN COMPLETED AS SHOWN.  
 SIGNED: Richard S. Fife  
 DATE: 10/4/89

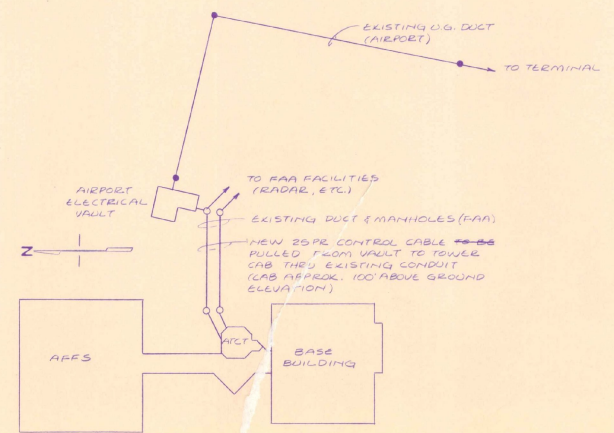
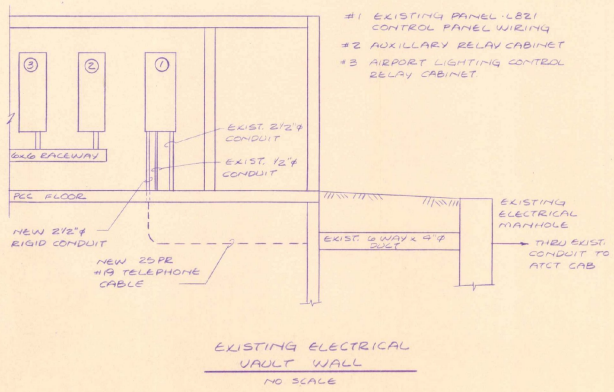
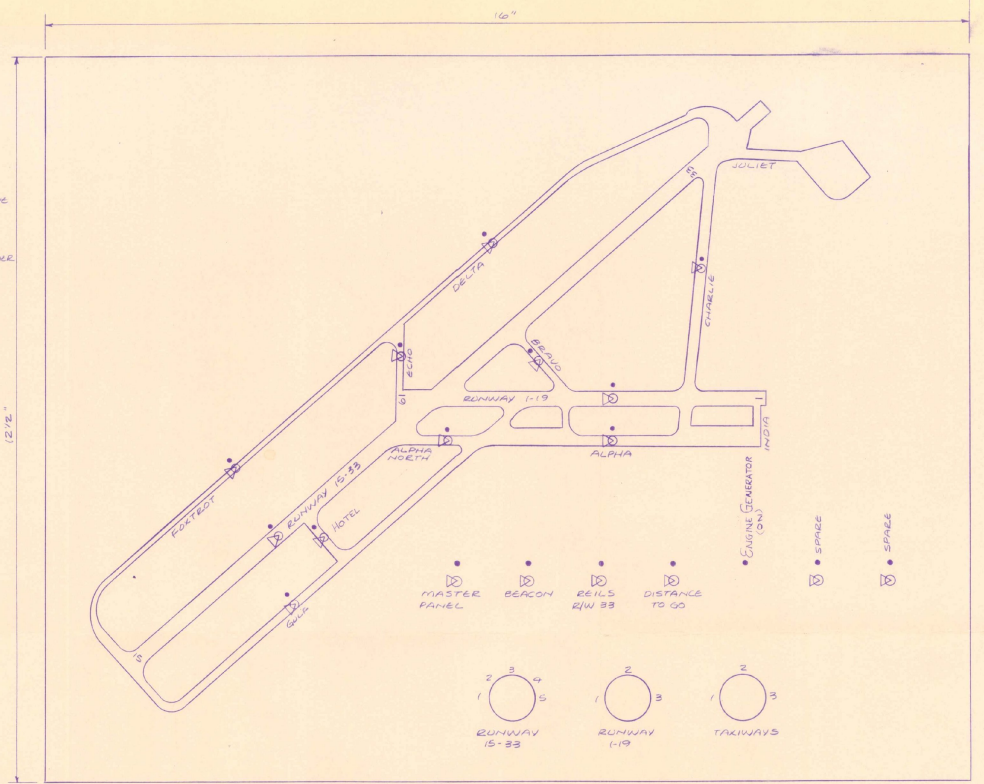
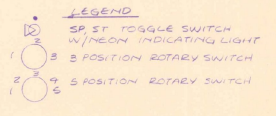
"AS BUILT"



**PANEL #1 LEGEND**

W WHITE  
 B BLUE  
 Y YELLOW  
 R RED  
 BK BLACK

--- EXISTING 1/2" #12 CABLES TO PANEL #3  
 - - - PROPOSED NEW TELEPHONE CABLES (25PR) TO NEW L-821 PANEL IN NEW ATCT  
 #RVE RVE CABLES 1/2" #10 ALL OTHER WIRING 1/2" #12  
 \*\* CIRCUIT NO LONGER IN SERVICE



- PANEL NOTES**
- L-821 PANEL TO CONFORM TO FAA SPECIFICATION FOR REMOTE CONTROL LIGHTING PANELS, A/C 150/5345-3D PANEL TO BE TYPE II, CLASS F, STYLE 1.
  - RUNWAY & TAXIWAY LAYOUT PAINTED ONTO PANEL PLATE AS SHOWN. AIRPORT LAYOUT TO CONTRAST WITH PANEL BACKGROUND (LAYOUT WHITE WITH BROWN BACKGROUND.) SHALL LAYOUT LETTERING BE 3/16" HIGH COLOR BLACK (RUNWAYS) & WHITE (TAXIWAYS)
  - ALL PANEL WIRING 1/2" #10 UNLESS OTHERWISE NOTED.
  - PANEL SWITCHPLATES ENGRAVED BAKELITE WHITE LETTERING AT LEAST 3/16" IN BLACK BACKGROUND.
  - NEW PANEL TO BE PLACED ON EXISTING CONSOLE IN ATCT CAB.
  - AIRPORT ROTATING BEACON CONTROL CABLES TO BE INSTALLED FROM TERMINAL EMH #4 THRU AIRPORT DUCT TO NEW CONTRACTOR IN VAULT.
  - INSTALL NEW SURGE (LIGHTNING) PROTECTION ON INCOMING CONTROL CABLES IN BASEMENT OF ATCT SURGE PROTECTION DEVICE SUPPLIED BY FAA - R. 4E.
  - 120V SUPPLY FOR INDICATING LAMP FED AT LIGHTING PANEL LOCATION (FROM TOWER CAB SERV)
  - MASTER SWITCH CONTROL 120V SUPPLY TO INDICATING LAMP - ONCT
  - 500V, 12 PAIR CABLE ASSEMBLY FOR INDICATING LAMP RUN IN SEPARATE (PASSAGE) CHASE FROM VAULT TO L-821 PANEL. AIP 3-50-0005-13 C/2

"AS BUILT"

BURLINGTON INTERNATIONAL AIRPORT  
 SOUTH BURLINGTON, VERMONT  
**AIP 3-50-0005-13**  
 C/O #2 INSTALL NEW L-821 PANEL IN AIR TRAFFIC CONTROL TOWER

I HEREBY CERTIFY THAT ALL WORK REQUIRED BY THIS DRAWING HAS BEEN COMPLETED AS INDICATED.

*April W. Dams* 5 MARCH 1990  
 AIRPORT ENGINEER DATE

DESIGN BY: G.W.D.	DATE: JULY, 1989
DRAWN BY: L.E.B.	SCALE: NONE

Phase III  
#090303-01



INITIALS

Hanger 4972 DONE

**BURLINGTON** VERMONT AGENCY OF TRANSPORTATION  
PLANNING DIVISION

STATES, INC.

HOYLE TANNER

Hanger 4976

INITIALS

Vermont Agency of  
Transportation  
Phase III  
#090303-01

Boeing  
AIP 3-50-0005-13 1988  
AIE 03-2067  
1988  
AS BUILT

Phase III  
#090303-01



INITIALS

Hanger 4977<sup>ZONE</sup>

STV - 1990  
AIR 03-2067  
AIP 3-50-0005-13

**VERMONT AGENCY OF TRANSPORTATION  
PLANNING DIVISION**