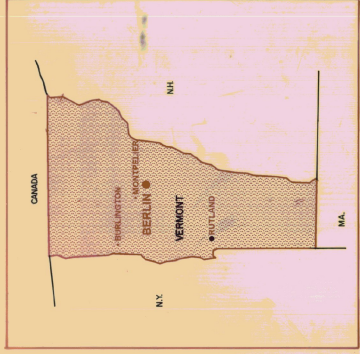


# PARTIAL PARALLEL TAXIWAY TO RUNWAY (35)

EDWARD F. KNAPP  
TOWNSHIP

A.I.



LOCATION MAP



VICINITY MAP

FEDERAL AVIATION ADMINISTRATION  
 Approved: \_\_\_\_\_ Manager, Airports Engineering Safety Branch  
 Date: \_\_\_\_\_

VERMONT AGENCY OF TRANSPORTATION  
 Approved: *Edward F. Knapp* Director of Engineering Construction  
 Date: *7-17-95*

THESE PLANS ARE SUBJECT TO SUCH ENGINEERING CHANGES AS MAY BE REQUIRED BY THE FEDERAL AVIATION ADMINISTRATION AND THE STANDARD SPECIFICATIONS FOR FEDERAL HIGHWAY ADMINISTRATION ON MARCH 15, 1990. REVISIONS AND SUCH REVISED SPECIFICATIONS AND SPECIAL PROVISIONS AS ARE INCORPORATED IN THESE PLANS.

REVISED 9/17/95 PLD

SHEET NUMBER	TITLE
1	QUANTITY SHEET
2	SITE PLAN
3	PARALLEL TAXIWAY PLAN AND PROFILE
4	STUB TAXIWAY PLAN AND PROFILE
5	TAXIWAY LIGHTING PLAN
6	TAXIWAY LIGHTING PLAN
7	TAXIWAY MARKING AND SIGN PLAN
8	ELECTRICAL DETAILS
9	TAXIWAY CROSS SECTIONS
10-16	EL ELEVATIONS
17	EL ELEVATIONS
18	SOIL BORING AND TEST PIT DATA
19	STANDARDS

Q-15  
AP-11

INDEX OF SHEETS

RECORD PLANS

CONTRACTOR: *Ray Cooley Const. Inc.*  
 RESIDENT ENGINEER: *Richard Comi*  
 CONSTRUCTION PERMIT: *Nov. 20, 1995*  
 RECORD PLANS BY: *R.R. Comi* DATE: *11-17-96*

PERMITS: *11-17-96*

BY: *Richard R. Comi* RESIDENT ENGINEER

DATE: *Dec 10 1997*

NOTE: Any further information concerning final quantities, amounts or details relative to this project may be found on microfiche in Central Files.

Consulting Engineers

Other: *Edward F. Knapp* 1950  
 1000 North Main Street  
 Montpelier, Vermont 05602  
 Telephone: (802) 223-1111  
 Fax: (802) 223-1112

Professional Engineer  
 License No. 1000  
 State of Vermont  
 Expires: 12/31/2000

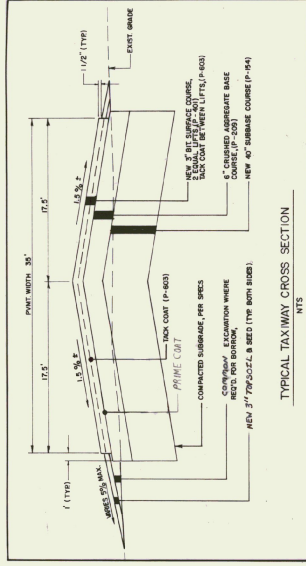
1996  
 AIR 04-5077  
 E.F. KNAPP PARALLEL TAXIWAY  
 894.049



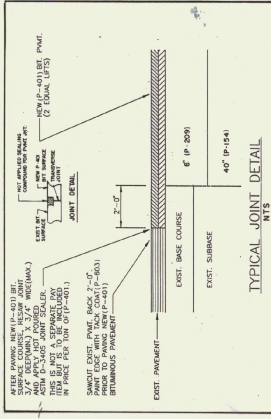




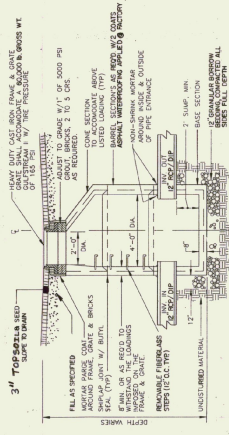




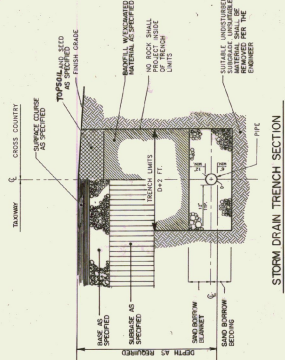
TYPICAL TAXIWAY CROSS SECTION  
NTS



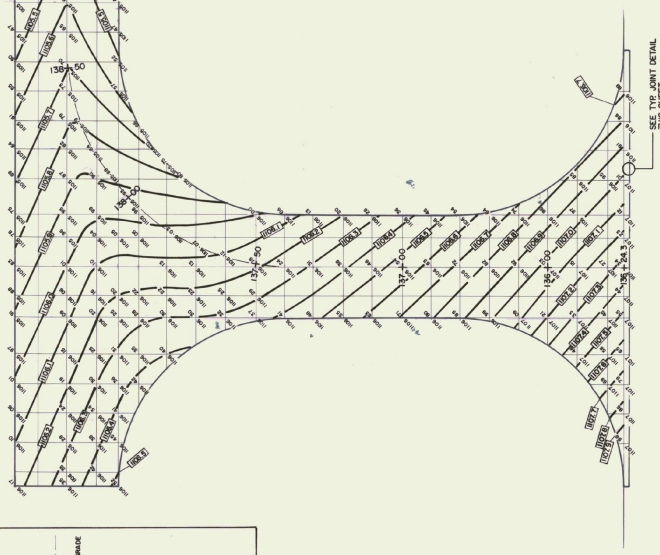
TYPICAL JOINT DETAIL  
NTS



ITEM 604.20, NEW PRECAST CATCH BASIN DETAIL  
NTS

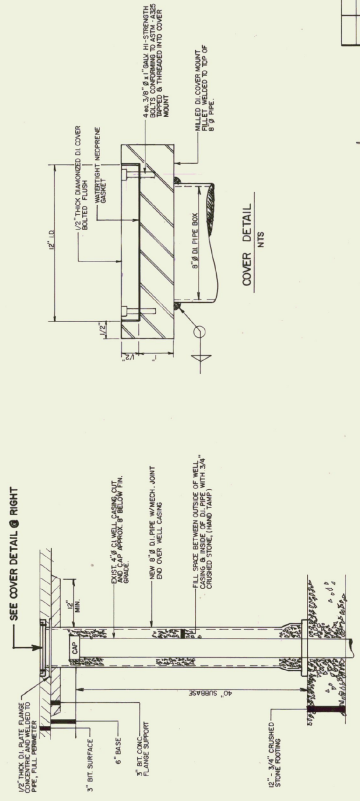


STORM DRAIN TRENCH SECTION  
NTS



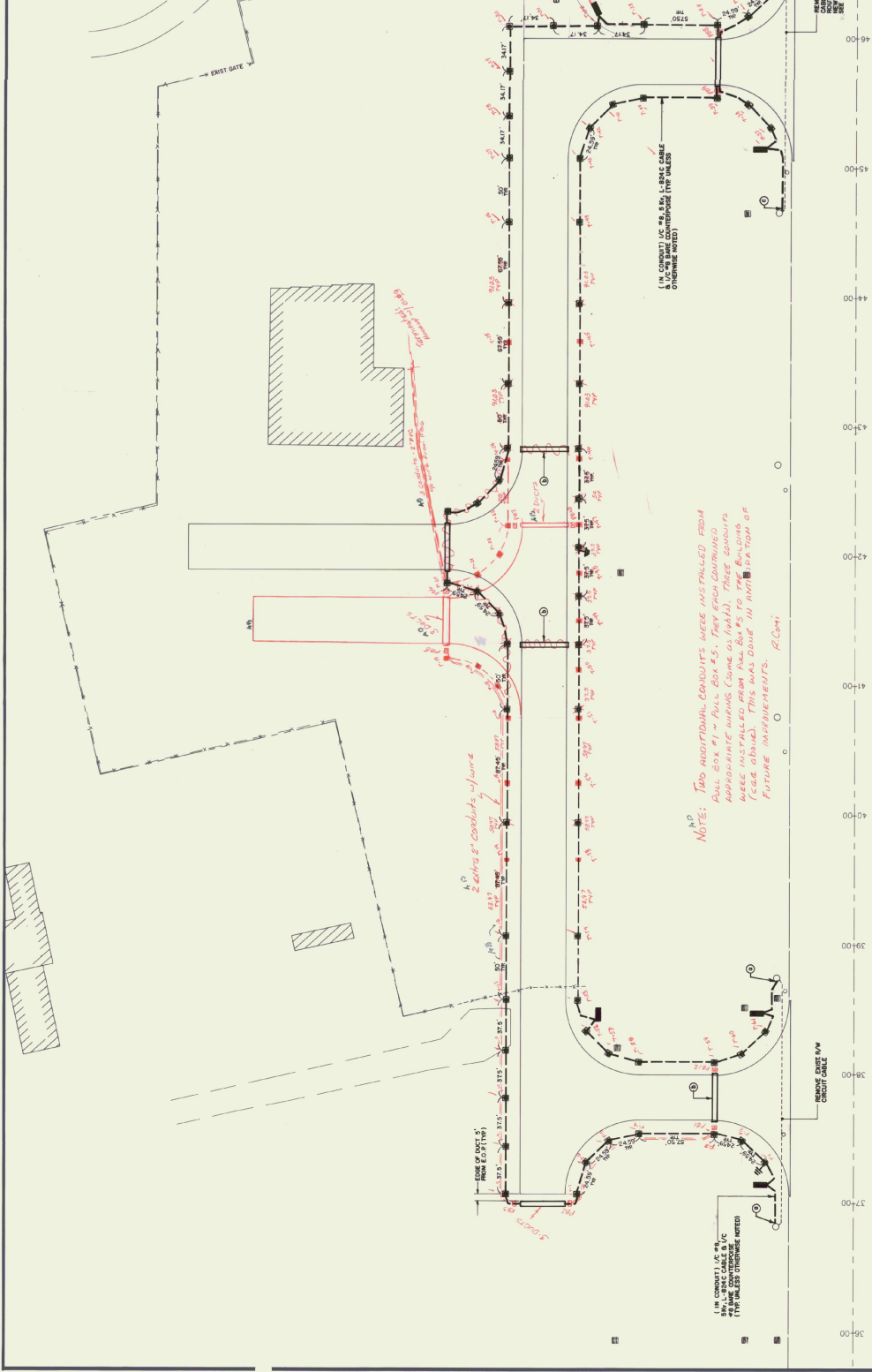
T/W 'A' GRADING DETAIL 2

*Note: Grades do not apply due to revision*



FABRICATED PIPE BOX DETAIL  
NTS

Rev.	Description



T/W LIGHTING PLAN  
1" = 40'

KEY NOTES

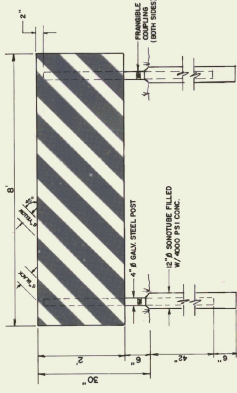
- 1. CONNECT NEW T/W LIGHTING CIRCUIT TO EXISTING R/W LIGHT TRANSFORMER WITH L-432 CONNECTOR.
- 2. NEW 2 X 4" CONCRETE ENCASED DUCT FOR FUTURE USE. ENDS CAPPED.
- 3. RECONNECT R/W LIGHTING CIRCUIT WITH NEW CABLE AT EXISTING LIGHT USING L-432 CONNECTOR.

NOTES:

1. AIRPORT MANAGER WILL PROVIDE THE CONTRACTOR WITH A LIGHTING SYSTEM NUMBERING NOMENCLATURE AT THE PRECONSTRUCTION CONFERENCE. THE CONTRACTOR SHALL BE RESPONSIBLE FOR LABELING OR REIDENOTED ON THE PROJECT WITH THE APPROPRIATE NUMBER.
2. LIGHTS SHALL BE PLACED 1' FROM EDGE OF PAVEMENT UNLESS OTHERWISE NOTED. SIGNS SHALL BE PLACED 3' FROM EDGE OF PAVEMENT. EXACT LOCATIONS FOR SIGNS SHALL BE DETERMINED BY THE ENGINEER.

REV.	DESCRIPTION	BY

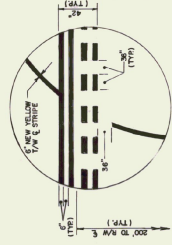
42373



TAXIWAY ENDING MARKER DETAIL

N.T.S.

CONSTRUCTION OF THIS MARKER SHALL BE IN ACCORDANCE WITH THE FOLLOWING SPECIFICATIONS:  
 1. STRIPES SHALL BE PAINTED ALUMINUM WHITE ON A BLACK BACKGROUND.  
 2. STRIPES SHALL BE 6 INCHES WIDE AND 6 INCHES HIGH.  
 3. STRIPES SHALL BE SPACED 4 INCHES APART.

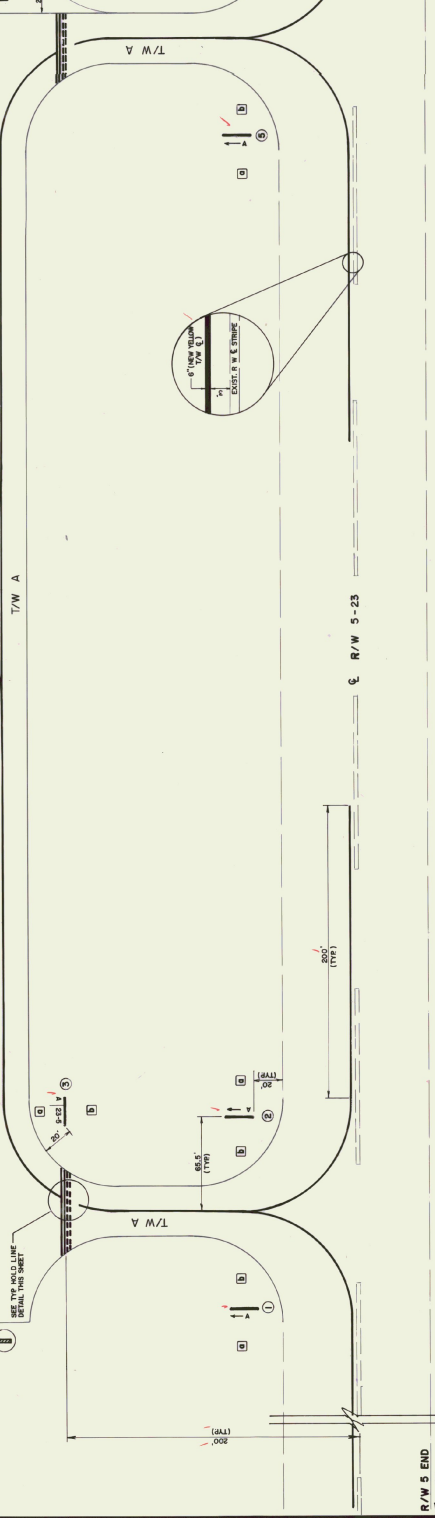


TYPICAL HOLD LINE DETAIL

N.T.S.

SEE TYP. ENDING MARKER DETAIL, THIS SHEET (TYP. OF 3)

SEE TYP. HOLD LINE DETAIL, THIS SHEET

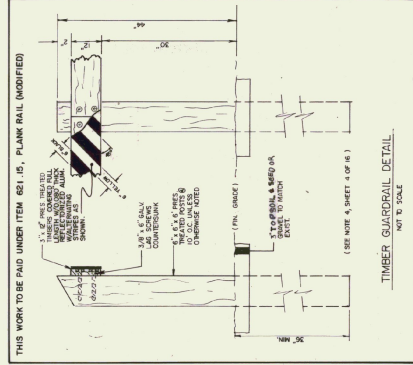


R/W 5 END

R/W 3-23

T/W MARKING & GUIDANCE SIGN PLAN

1"=40'



TIMBER GUARDRAIL DETAIL

NOT TO SCALE

THIS WORK TO BE PAID UNDER ITEM 651.15, PLANK RAIL (MODIFIED)

Rev.	Description





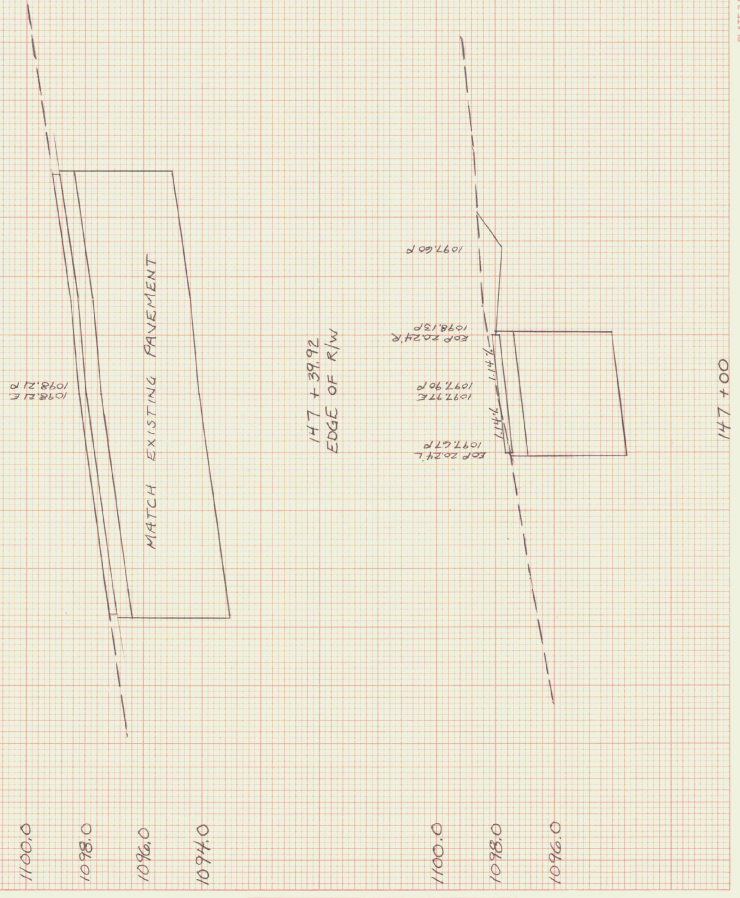








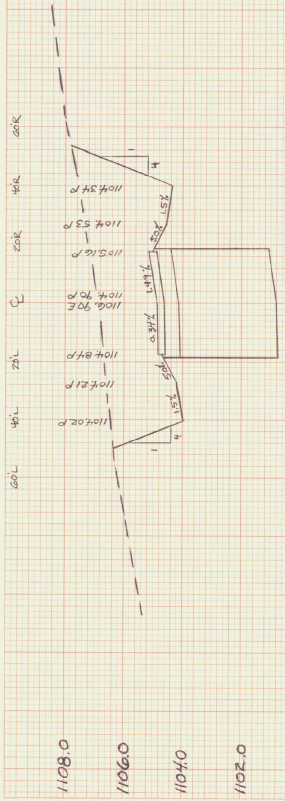
NO.	DATE
FINAL SURVEY	
SURVEYOR	
ADVISER	
APPROVER	
DATE	



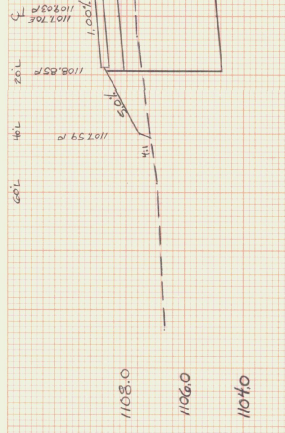
NO.	DATE
ORIGINAL SURVEY	
SURVEYOR	
ADVISER	
APPROVER	
DATE	

PLATE 5 FULL CROSS SECTION-HILL LANE  
 11/10/19

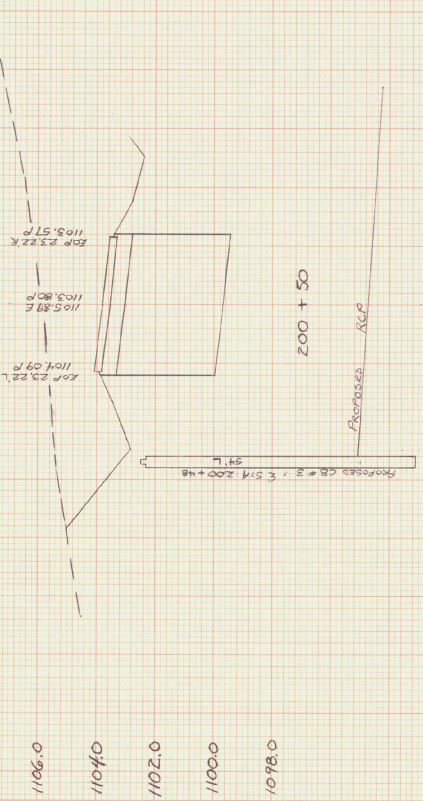
NO. \_\_\_\_\_  
 DATE \_\_\_\_\_  
 SURVEY NUMBER \_\_\_\_\_  
 SHEET NUMBER \_\_\_\_\_  
 FINAL NUMBER \_\_\_\_\_  
 DRAWN BY \_\_\_\_\_  
 CHECKED BY \_\_\_\_\_



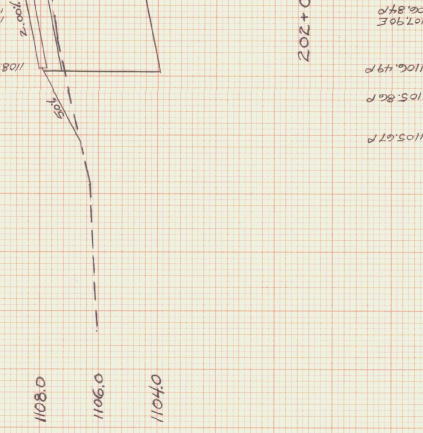
201 + 00



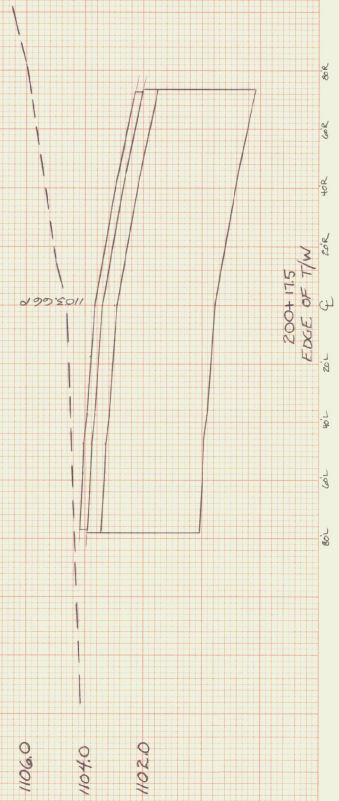
202 + 00



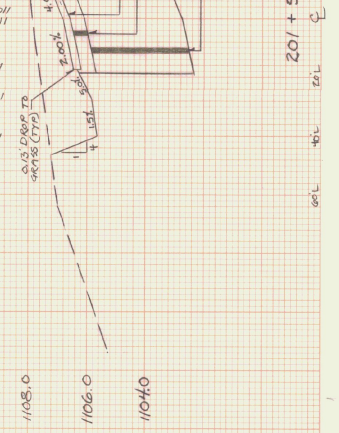
200 + 50



202 + 0

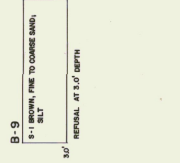
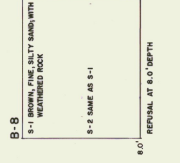
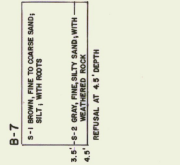
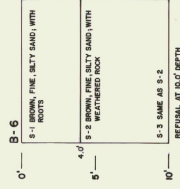
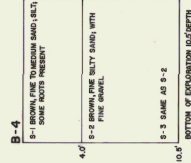
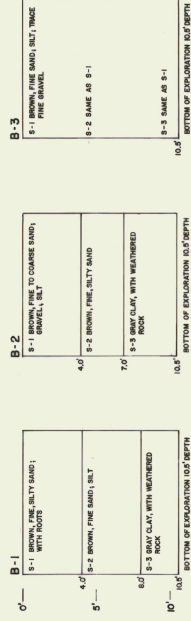
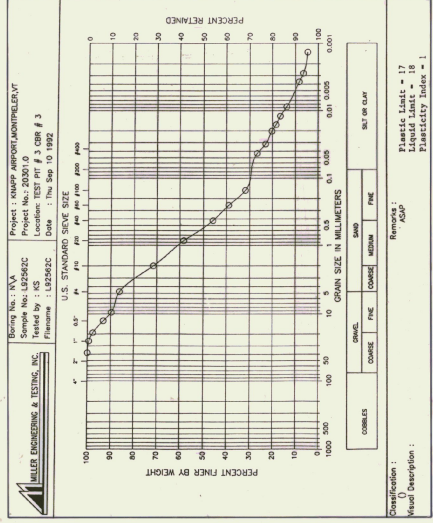
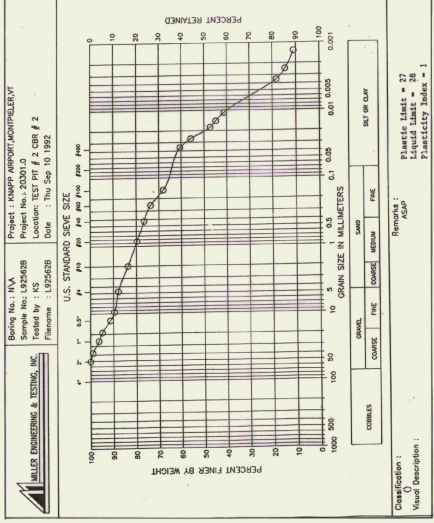
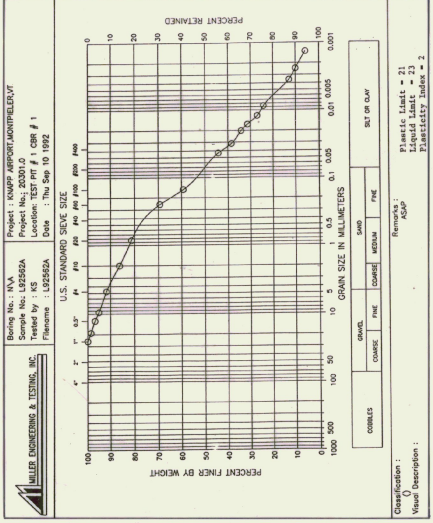


200+17.5  
 EDGE OF T/W



201 + 20

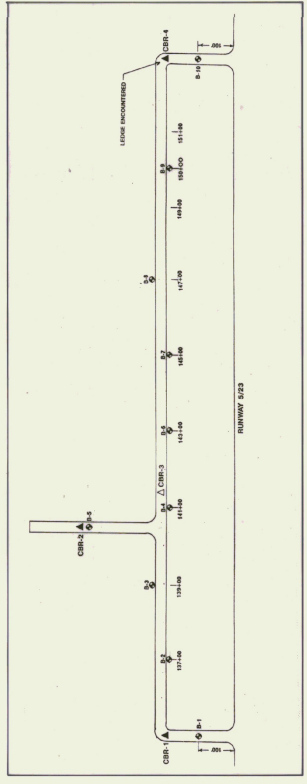
PLATE 3-FULL CROSS SECTIONAL VIEW  
 11/10/2018



Material Description	Depth	Penetration	CBR Value
Fine silty sand, trace gravel	0 to 3 feet	0.1 inch 0.2 inch	9.0 11.3
Fine silty sand, trace gravel	0 to 3 feet	0.1 inch 0.2 inch	9.4 11.7
Fine silty sand, trace gravel	0 to 3 feet	0.1 inch 0.2 inch	9.4 11.7

Test Pit #1, CBR #1  
 Test Pit #2, CBR #2  
 Test Pit #3, CBR #3  
 Test Pit #4, CBR #4

Ledge encountered at approximately 1.5 feet



Rev.	Description



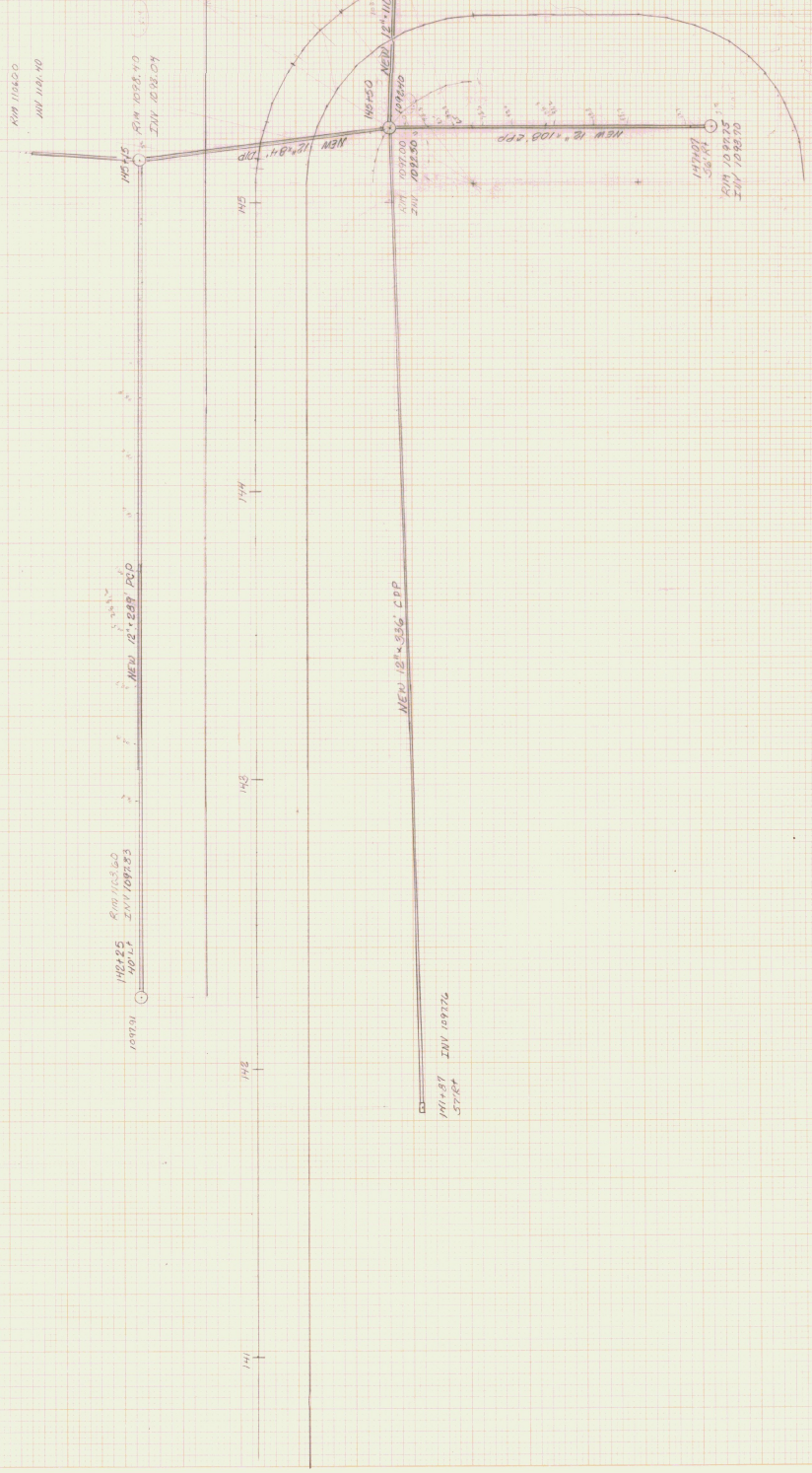


NO.	DATE	BY	REVISION

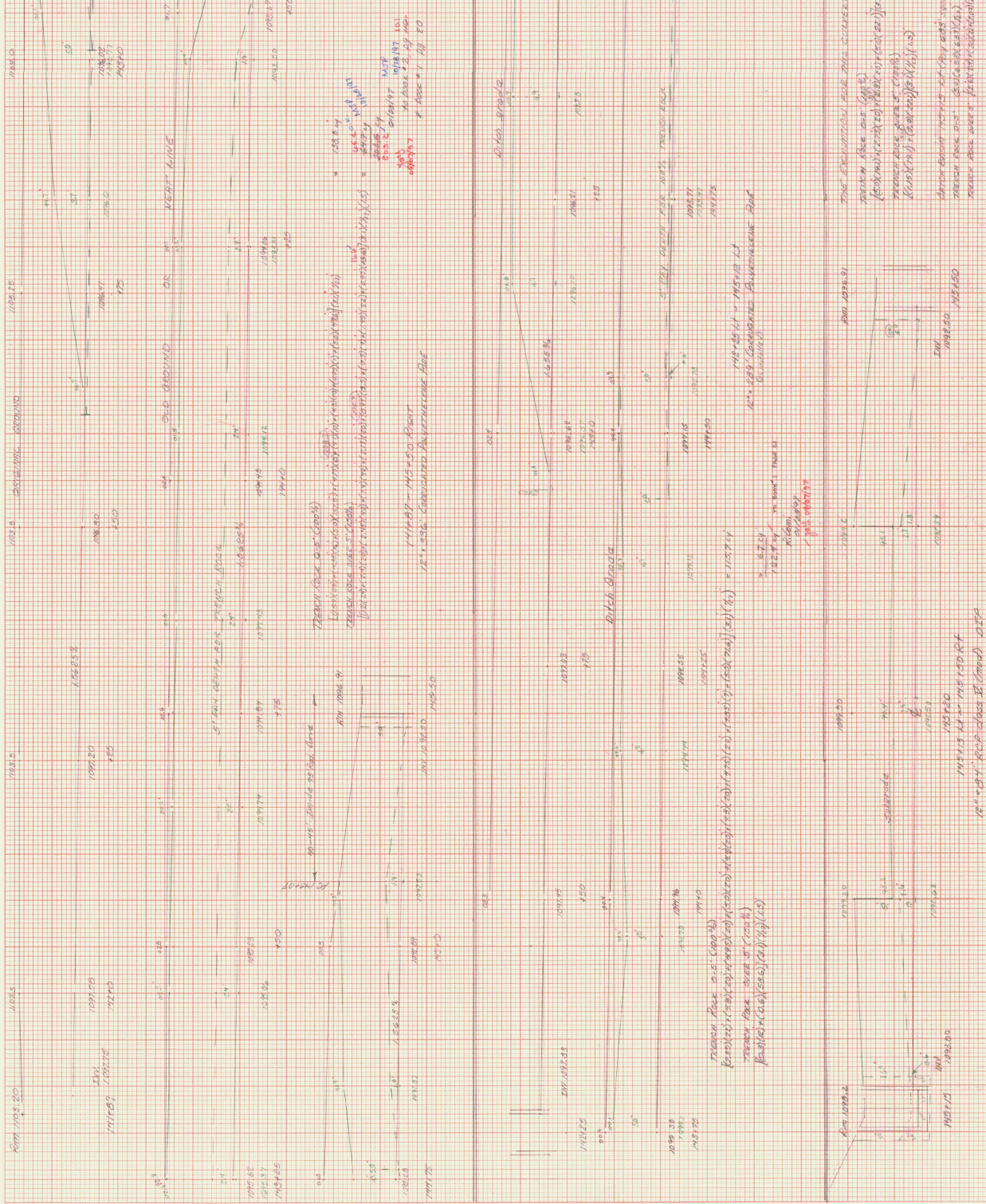
NO.	DATE	BY	REVISION

NO.	DATE	BY	REVISION

NO.	DATE	BY	REVISION



Keuffel & Esser Company  
 PLATE & CROSS SECTION 48708 - Main U.S.A.



NO.	DATE	REVISIONS
1		
2		
3		
4		
5		
6		
7		
8		
9		
10		

NO.	DATE	REVISIONS
1		
2		
3		
4		
5		
6		
7		
8		
9		
10		

PLATE 3. CROSS SECTION 48708 Main U.S.A.  
 Kenfield & Essex Company

THE PROPORTION FOR THIS SECTION  
 FROM ROAD CUT (1:1)  
 (ROAD CUT) (1:1) (1:1) (1:1) (1:1)  
 FROM ROAD CUT (1:1)  
 (ROAD CUT) (1:1) (1:1) (1:1) (1:1)  
 FROM ROAD CUT (1:1)  
 (ROAD CUT) (1:1) (1:1) (1:1) (1:1)

144.00' - 145.00' RT  
 12.00' - 10.00' BOUNDARY DIMENSIONAL BOUNDARY  
 10.00' - 10.00' BOUNDARY DIMENSIONAL BOUNDARY  
 10.00' - 10.00' BOUNDARY DIMENSIONAL BOUNDARY  
 10.00' - 10.00' BOUNDARY DIMENSIONAL BOUNDARY

144.00' - 145.00' RT  
 12.00' - 10.00' BOUNDARY DIMENSIONAL BOUNDARY  
 10.00' - 10.00' BOUNDARY DIMENSIONAL BOUNDARY  
 10.00' - 10.00' BOUNDARY DIMENSIONAL BOUNDARY  
 10.00' - 10.00' BOUNDARY DIMENSIONAL BOUNDARY

144.00' - 145.00' RT  
 12.00' - 10.00' BOUNDARY DIMENSIONAL BOUNDARY  
 10.00' - 10.00' BOUNDARY DIMENSIONAL BOUNDARY  
 10.00' - 10.00' BOUNDARY DIMENSIONAL BOUNDARY  
 10.00' - 10.00' BOUNDARY DIMENSIONAL BOUNDARY

144.00' - 145.00' RT  
 12.00' - 10.00' BOUNDARY DIMENSIONAL BOUNDARY  
 10.00' - 10.00' BOUNDARY DIMENSIONAL BOUNDARY  
 10.00' - 10.00' BOUNDARY DIMENSIONAL BOUNDARY  
 10.00' - 10.00' BOUNDARY DIMENSIONAL BOUNDARY

144.00' - 145.00' RT  
 12.00' - 10.00' BOUNDARY DIMENSIONAL BOUNDARY  
 10.00' - 10.00' BOUNDARY DIMENSIONAL BOUNDARY  
 10.00' - 10.00' BOUNDARY DIMENSIONAL BOUNDARY  
 10.00' - 10.00' BOUNDARY DIMENSIONAL BOUNDARY

144.00' - 145.00' RT  
 12.00' - 10.00' BOUNDARY DIMENSIONAL BOUNDARY  
 10.00' - 10.00' BOUNDARY DIMENSIONAL BOUNDARY  
 10.00' - 10.00' BOUNDARY DIMENSIONAL BOUNDARY  
 10.00' - 10.00' BOUNDARY DIMENSIONAL BOUNDARY

144.00' - 145.00' RT  
 12.00' - 10.00' BOUNDARY DIMENSIONAL BOUNDARY  
 10.00' - 10.00' BOUNDARY DIMENSIONAL BOUNDARY  
 10.00' - 10.00' BOUNDARY DIMENSIONAL BOUNDARY  
 10.00' - 10.00' BOUNDARY DIMENSIONAL BOUNDARY

144.00' - 145.00' RT  
 12.00' - 10.00' BOUNDARY DIMENSIONAL BOUNDARY  
 10.00' - 10.00' BOUNDARY DIMENSIONAL BOUNDARY  
 10.00' - 10.00' BOUNDARY DIMENSIONAL BOUNDARY  
 10.00' - 10.00' BOUNDARY DIMENSIONAL BOUNDARY







PST 14120.00  
STPS 200120.00

141

DATE	BY	REVISION	REVISION

DATE	BY	REVISION	REVISION

Keuffel & Esser Company PLATES CROSS SECTION TABLES Made in U.S.A.

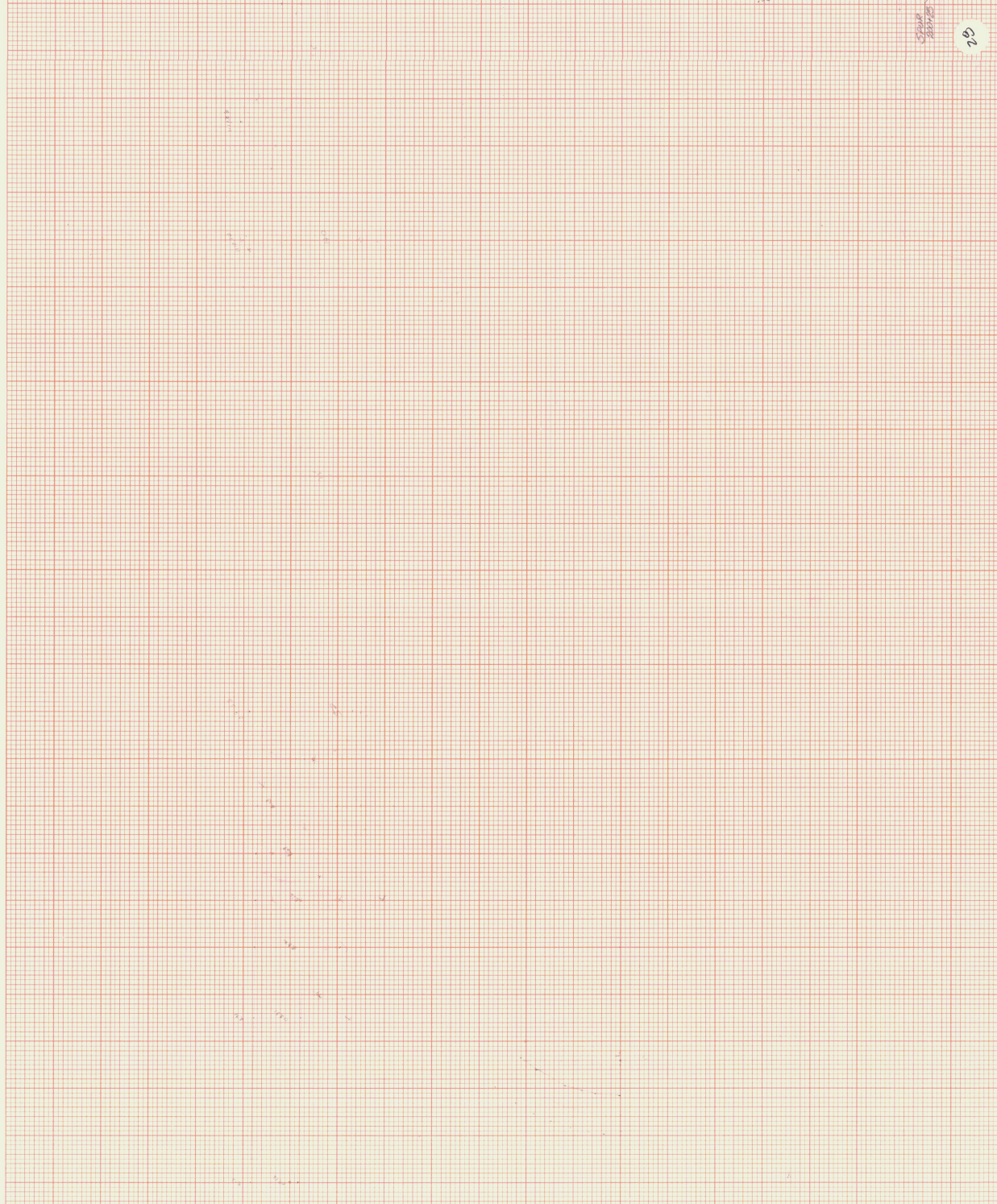


28

Keuffel & Esser Company  
PLATE 3, CROSS SECTION 48 7096 Made in U.S.A.

NO.	DATE
AREA'S CHECKED	
AREA	
PERCENT	
REMARKS	
SURVEYOR	
DATE	

NO.	DATE
AREA'S CHECKED	
AREA	
PERCENT	
REMARKS	
SURVEYOR	
DATE	







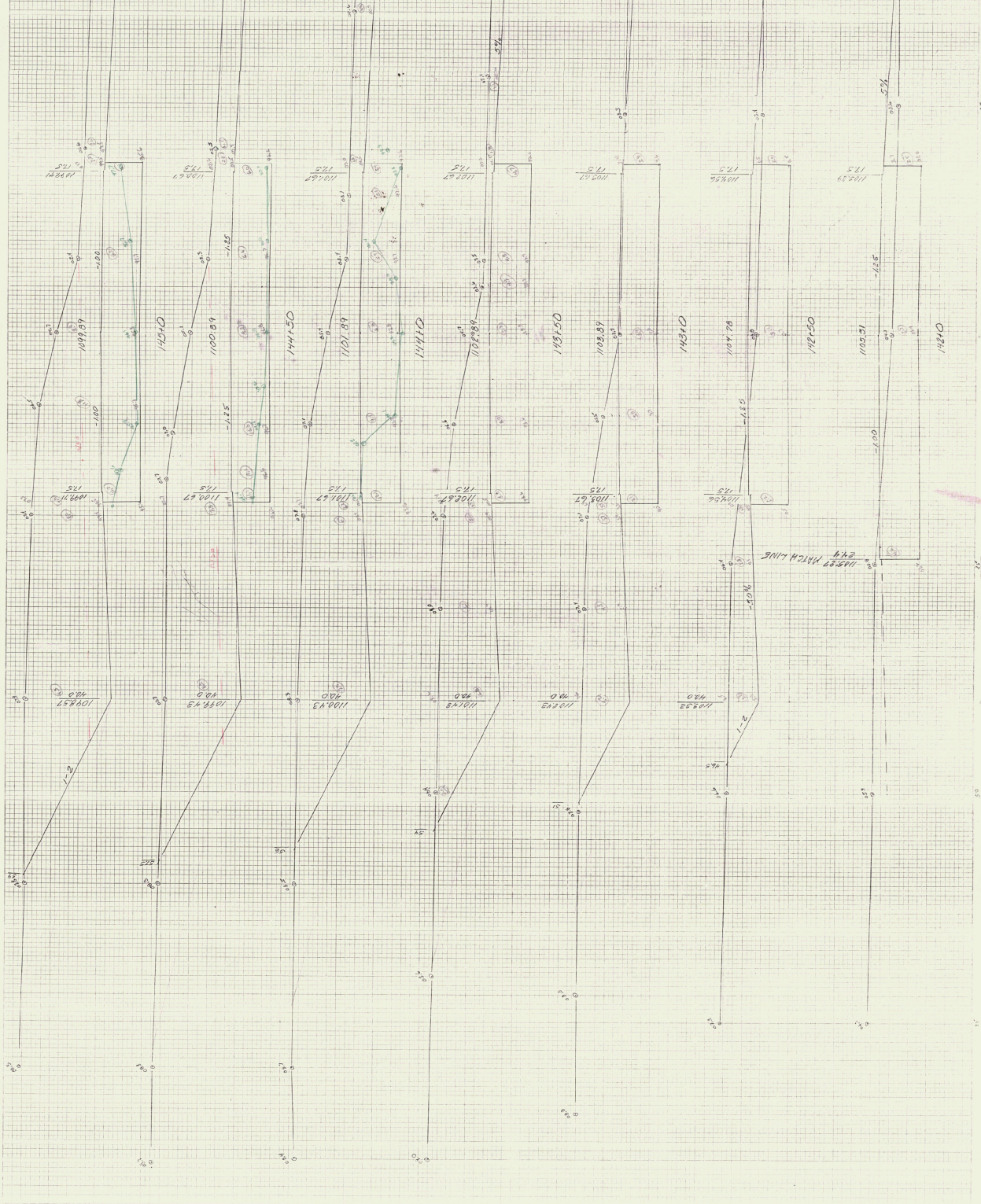












P. R. & S. ENGINEERING INCORPORATED - 25 W. 42nd St.

New York, N. Y.



