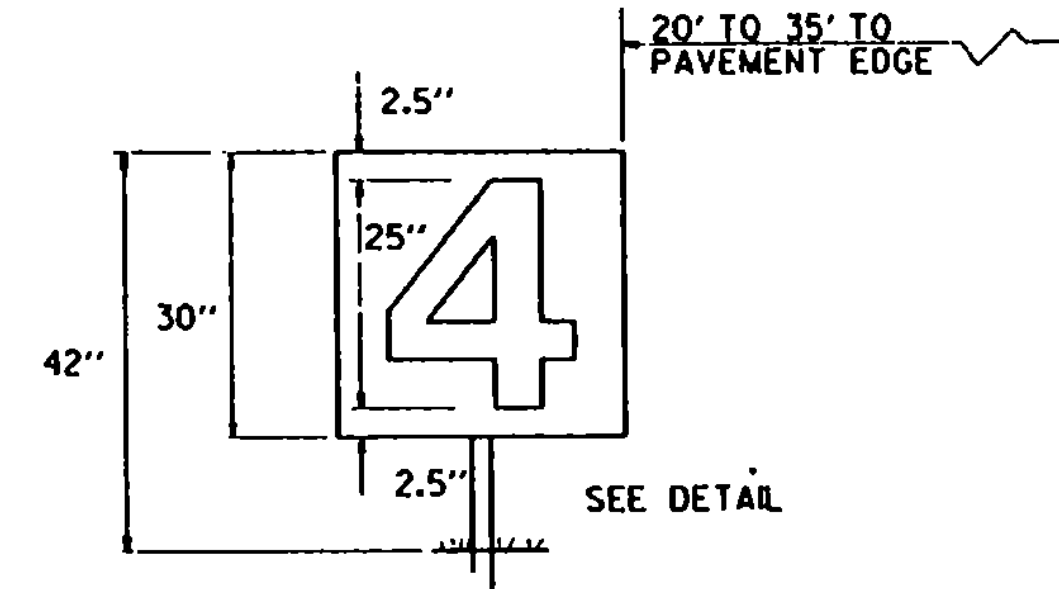
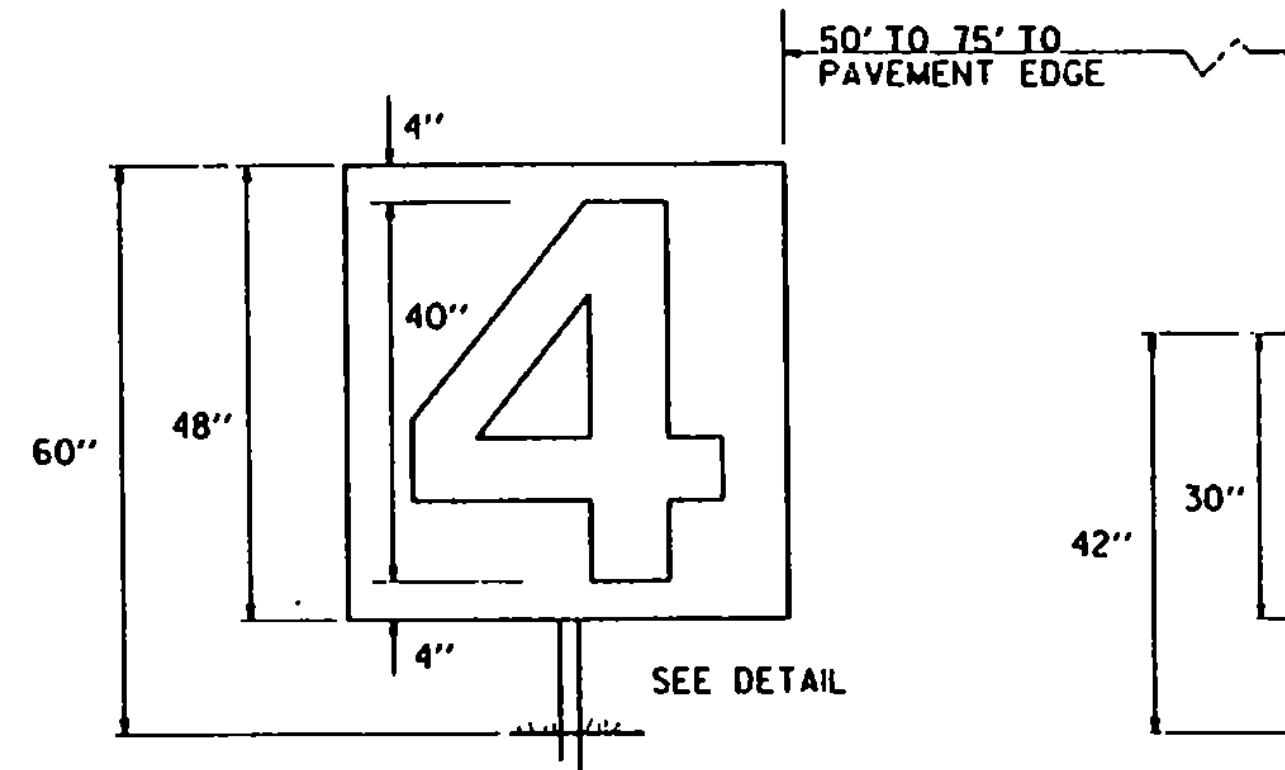


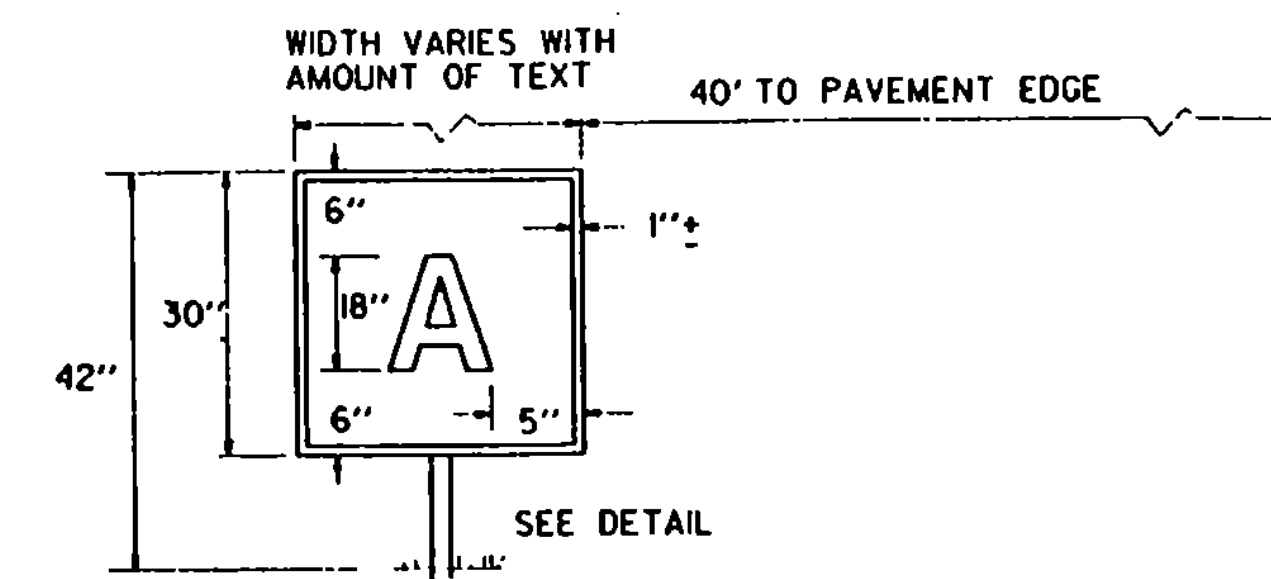
MANDATORY SIGNS

- MANDATORY SIGNS HAVE WHITE INSCRIPTIONS ON A RED BACKGROUND
- SIGNS TO BE LIGHTED WHEN USED ON CERTIFICATED AIRPORTS OR OTHER AIRPORTS HAVING INSTRUMENT OPERATIONS.
- UNLIGHTED, RETROREFLECTIVE SIGNS MAY BE USED AT GENERAL AVIATION AIRPORTS HAVING ONLY VISUAL FLIGHT (VFR) OPERATIONS.



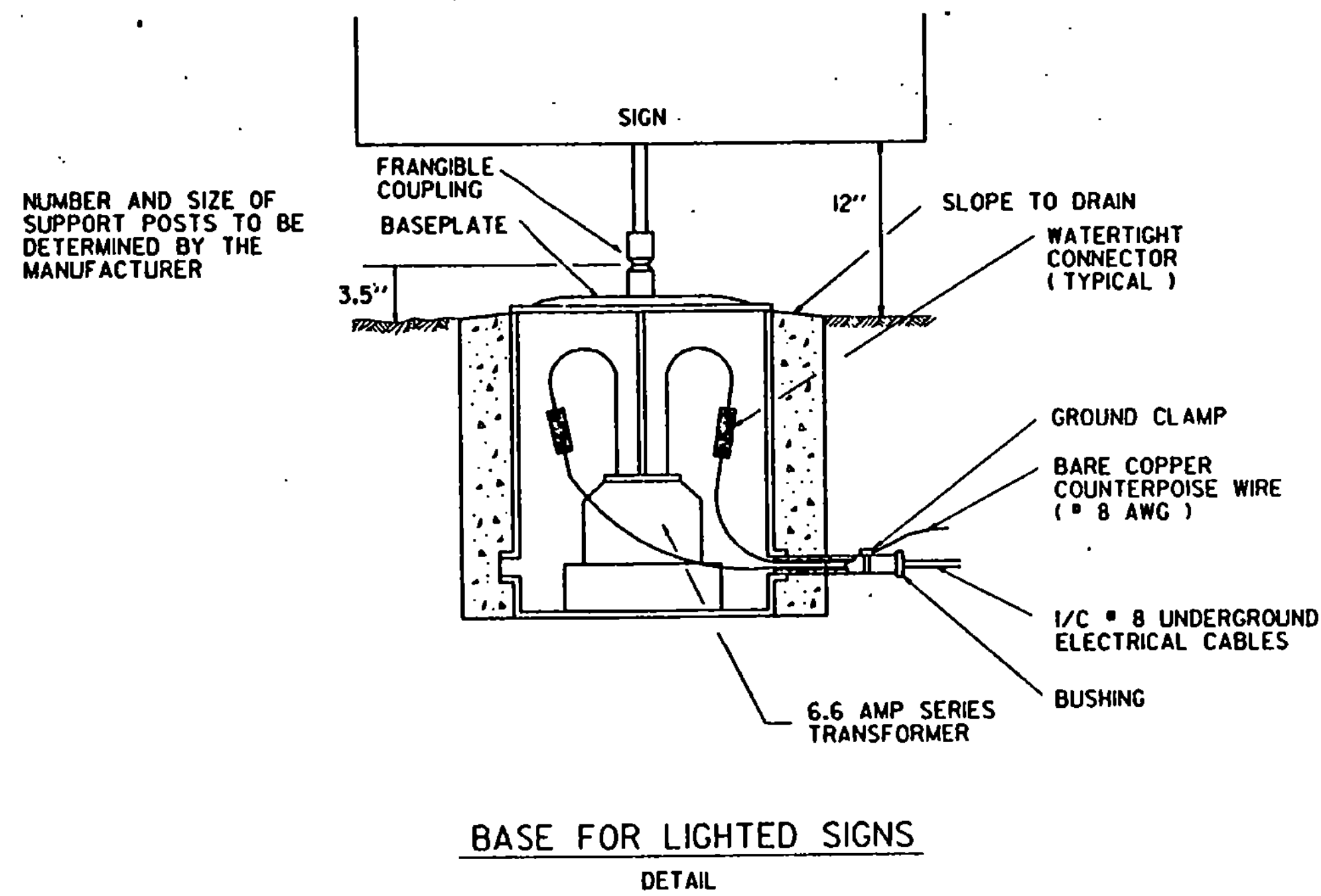
RUNWAY DISTANCE REMAINING SIGNS

- SIGNS HAVE WHITE INSCRIPTIONS ON A BLACK BACKGROUND.
- LARGE SIGNS USED IF PLACED 50 TO 75 FEET FROM PAVEMENT EDGE.
- SMALL SIGNS USED IF PLACED 20 TO 35 FEET FROM PAVEMENT EDGE.
- SIGN SIZE SHOULD BE CONSISTANT ALONG LENGTH OF EACH RUNWAY.
- ONLY LIGHTED SIGNS ARE USED FOR RUNWAY DISTANCE REMAINING SIGNS.
- SIGNS TO BE DOUBLE-SIDED, PREFERABLY LOCATED ON THE LEFT SIDE OF RUNWAY AS VIEWED FROM THE MOST OFTEN USED DIRECTION.

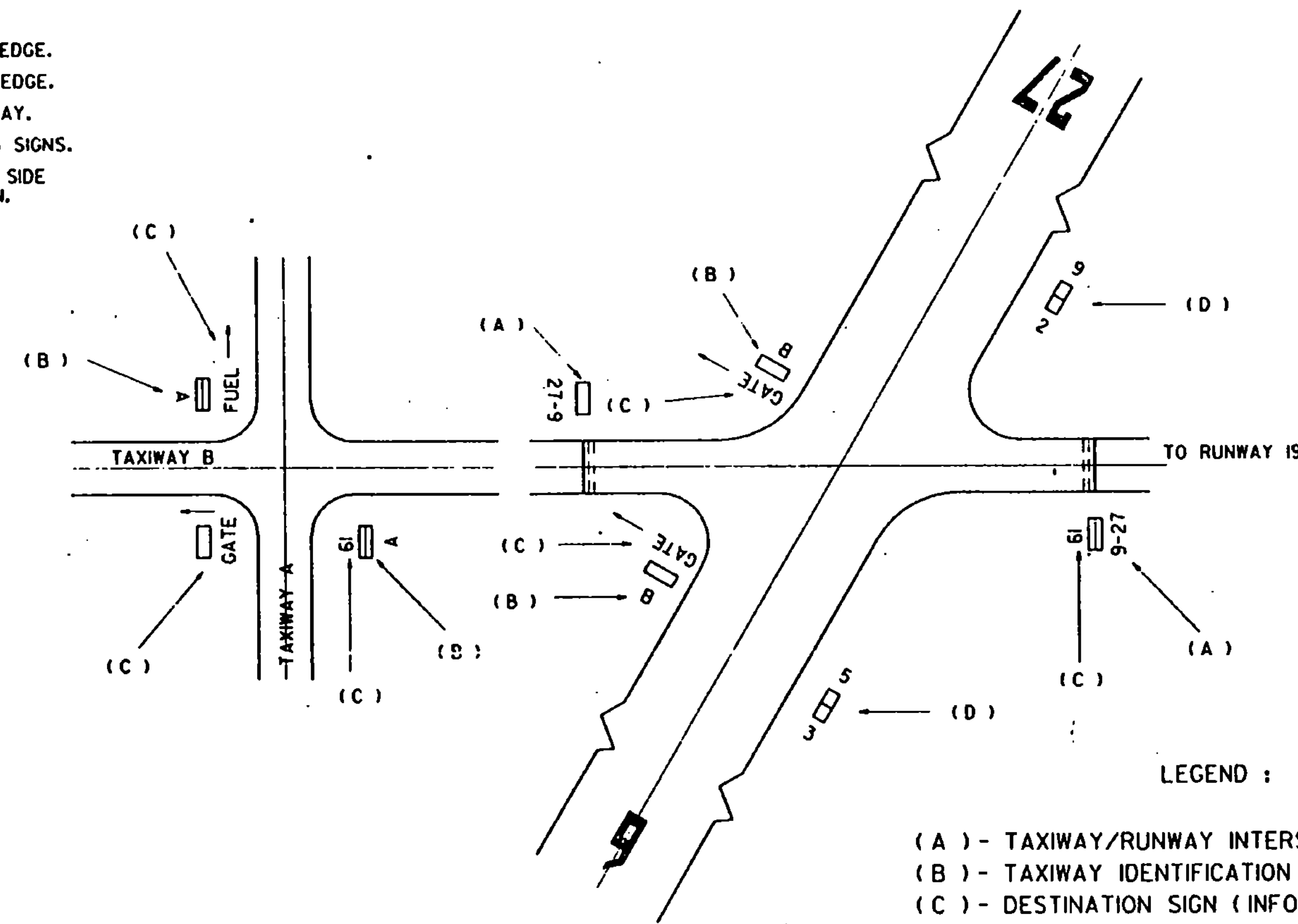


INFORMATION SIGNS

- INFORMATION SIGNS HAVE BLACK INSCRIPTIONS ON A YELLOW BACKGROUND, AND HAVE A BLACK BORDER.



BASE FOR LIGHTED SIGNS
DETAIL



TYPICAL SIGN APPLICATIONS

- LEGEND :
- (A) - TAXIWAY/RUNWAY INTERSECTION SIGN (MANDATORY TYPE)
 - (B) - TAXIWAY IDENTIFICATION SIGN (INFORMATION TYPE)
 - (C) - DESTINATION SIGN (INFORMATION TYPE)
 - (D) - RUNWAY DISTANCE REMAINING SIGN

REFER TO CURRENT FAA ADVISORY CIRCULAR .

REVISIONS AND CORRECTIONS
SHEET UPDATED MARCH 1, 1990

APPROVED *MARCH 1, 1990*
DATE

Stephen B. Theobald
DIRECTOR, PLANNING AND
PRECONSTRUCTION

Christy M. Murphy
DIRECTOR, DESIGN DIVISION

SIGN SYSTEMS



STANDARD
AP-12