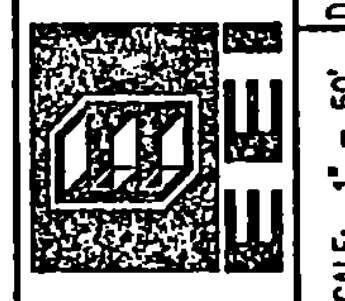


SEAL
[Signature]

DATE	
BY	
BY	
BY	
DESCRIPTION	
REVISION	

PROJECT NO.
7804

Envirodyne Engineers, Inc.
41 East 42nd St., Suite 1015
New York, NY 10017



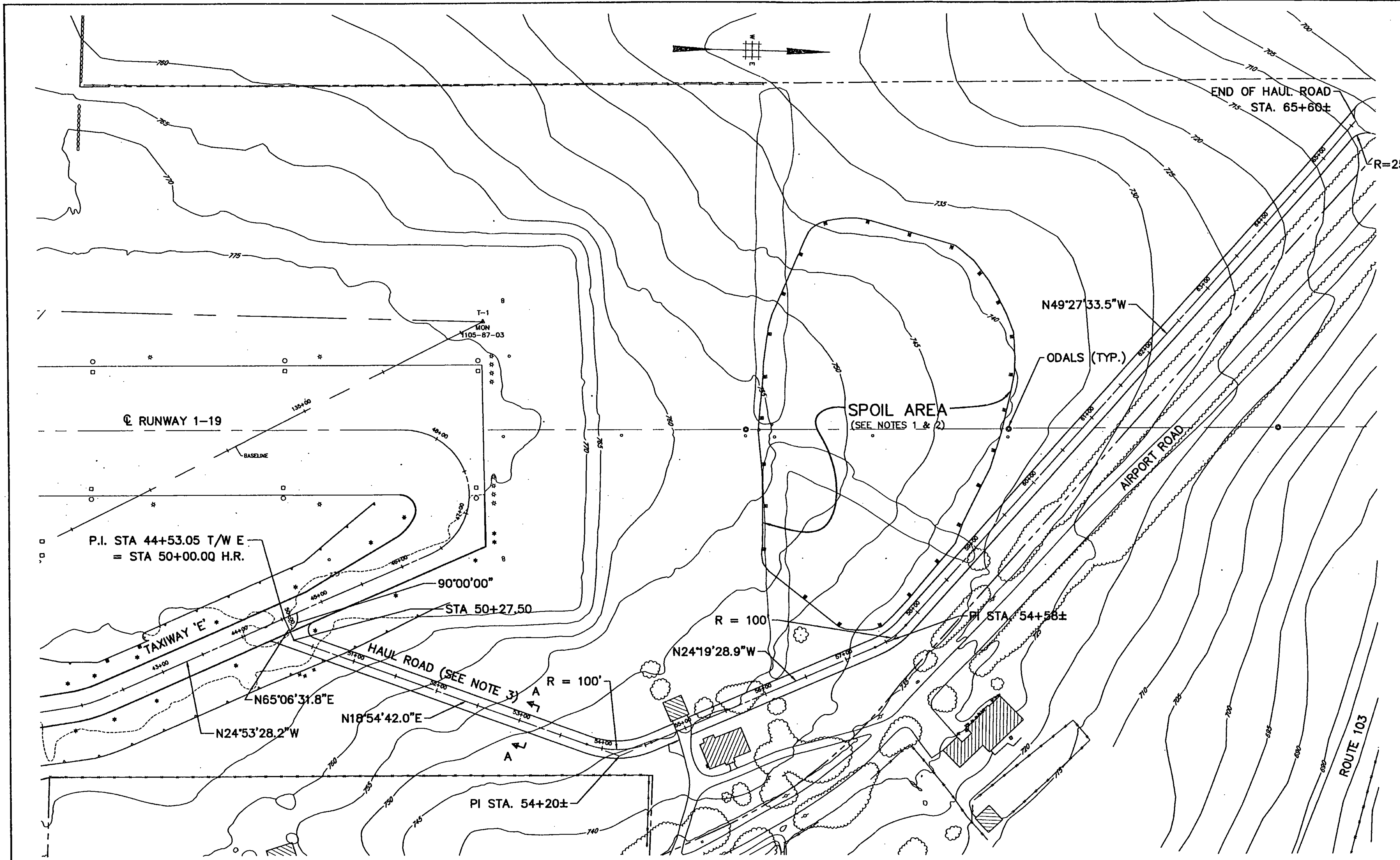
SCALE: 1" = 50'

RUTLAND STATE AIRPORT
CLARENDON, VERMONT

DRAWING NO.

HR1

SHEET 29 OF 44

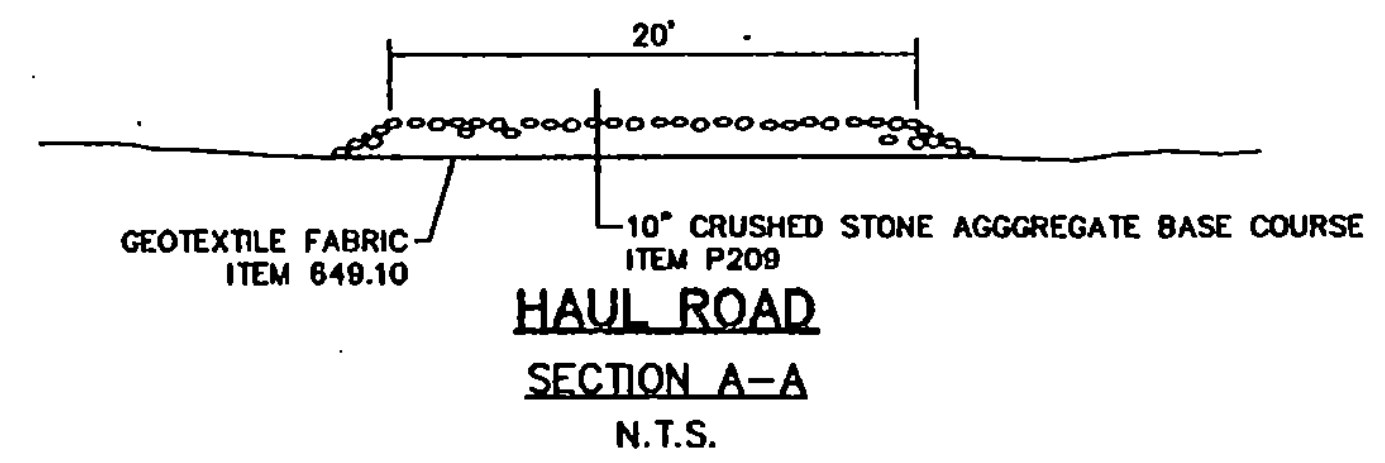


P.I. STA 44+53.05 T/W E
= STA 50+00.00 H.R.

STA 50+27.50

PI STA. 54+56±

PI STA. 54+20±



- NOTE:**
- EXCAVATED MATERIAL FROM THE CONSTRUCTION OF THE TAXIWAY SHOULD BE STOCKPILED IN THE DESIGNATED SPOIL AREA ACCORDING TO THEIR DESCRIPTION AND FUTURE USE (AS DIRECTED BY THE ENGINEER). NO SEPARATE PAYMENT WILL BE MADE BUT SHALL BE INCLUDED IN THE CUBIC YARD PRICE BID IN THE CONTRACT FOR EXCAVATION ITEM 203.15.
 - MAXIMUM ELEVATION OF STOCKPILED MATERIAL TO BE 755.00. STOCKPILE SLOPES TO BE 1:3. SURFACE TO BE SEEDED UPON COMPLETION. NO SEPARATE PAYMENT TO BE MADE, BUT SHALL BE INCLUDED IN THE CUBIC YARD BID IN THE CONTRACT FOR ITEM 203.15 EXCAVATION.
 - CONTRACTOR IS FREE TO ALTER THE ALIGNMENT OF THE HAUL ROAD WHEN NECESSARY, BUT ONLY UPON PRIOR APPROVAL FROM THE RESIDENT ENGINEER AND THE AIRPORT MANAGER.



C:\USER\DMESSEL\PROJECTS\DESIGN Men Aug 23 10:26:30 1993