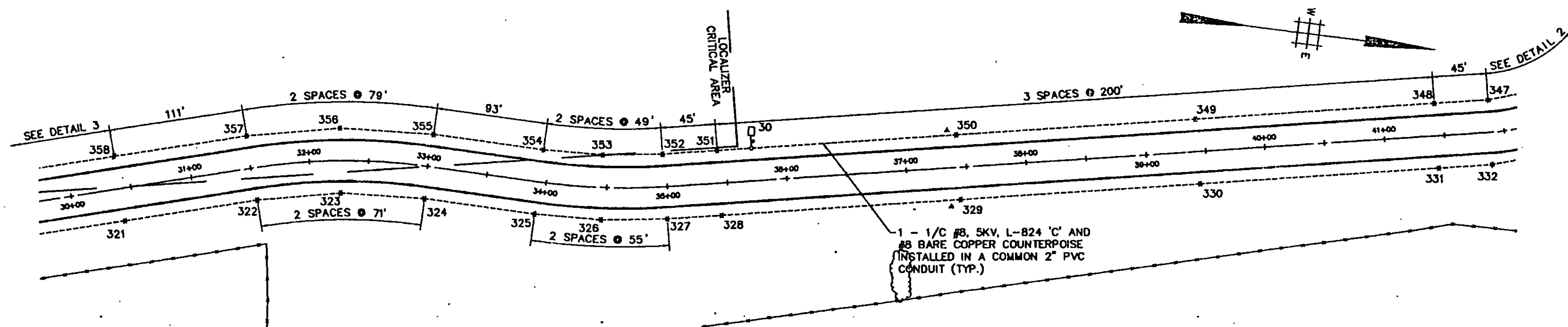
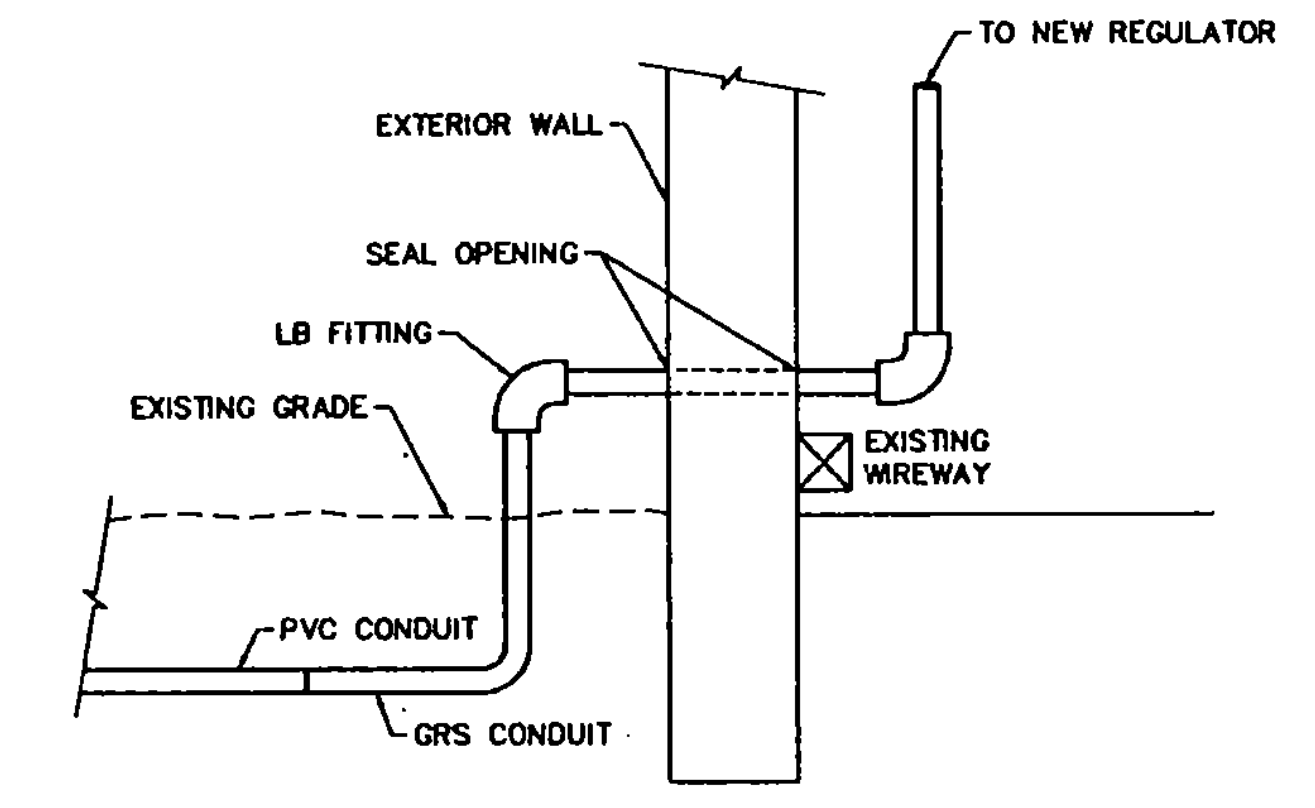


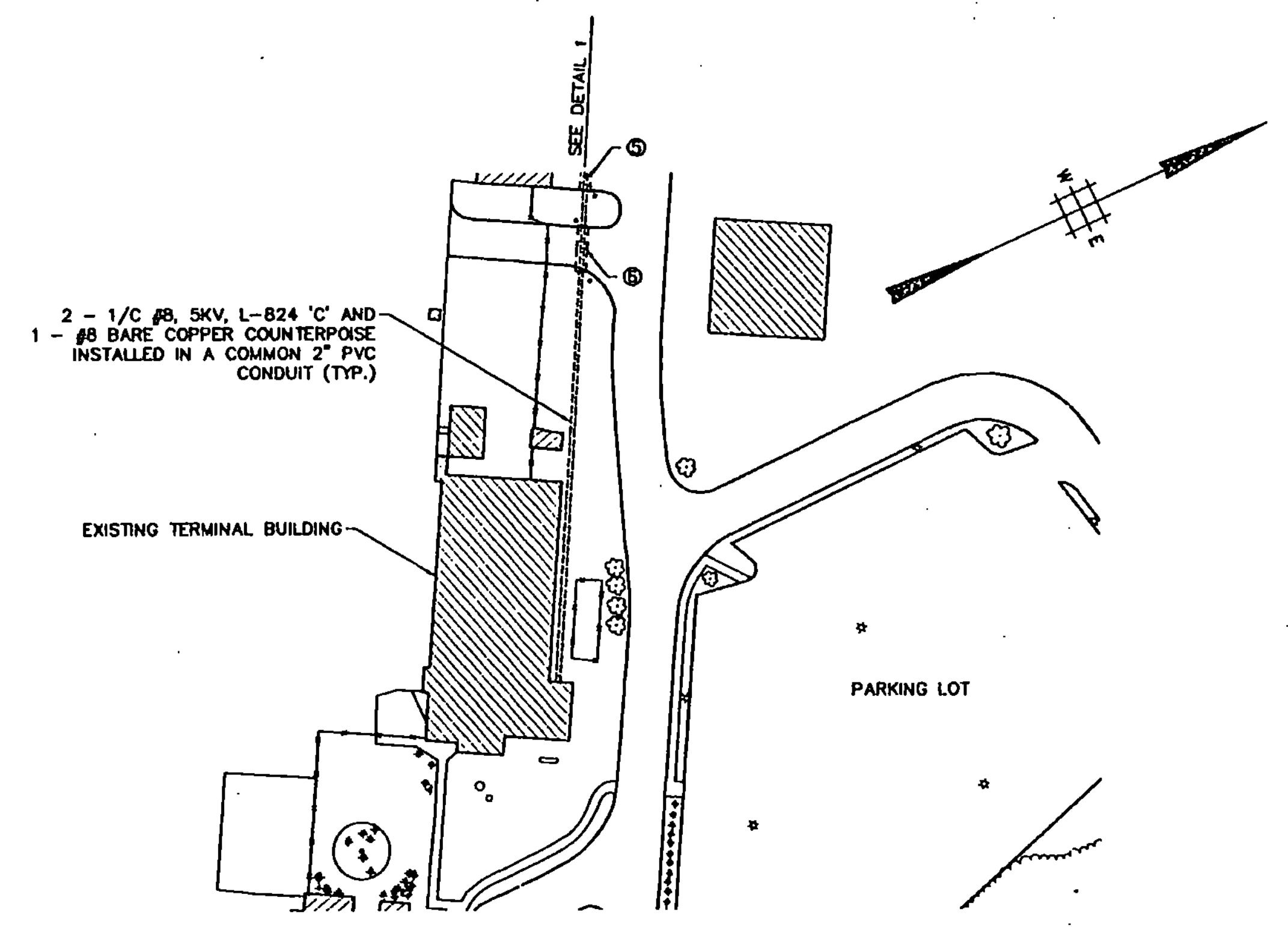
**DETAIL 3**  
SCALE: 1" = 60'



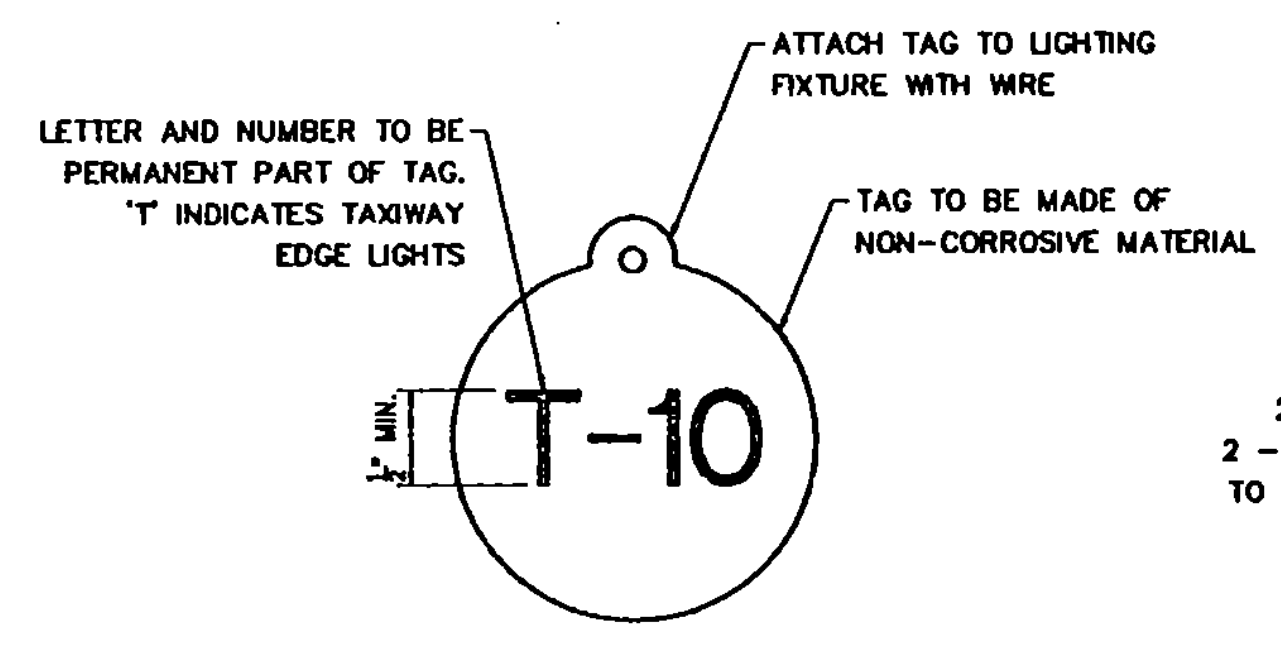
**DETAIL 4**  
SCALE: 1" = 60'



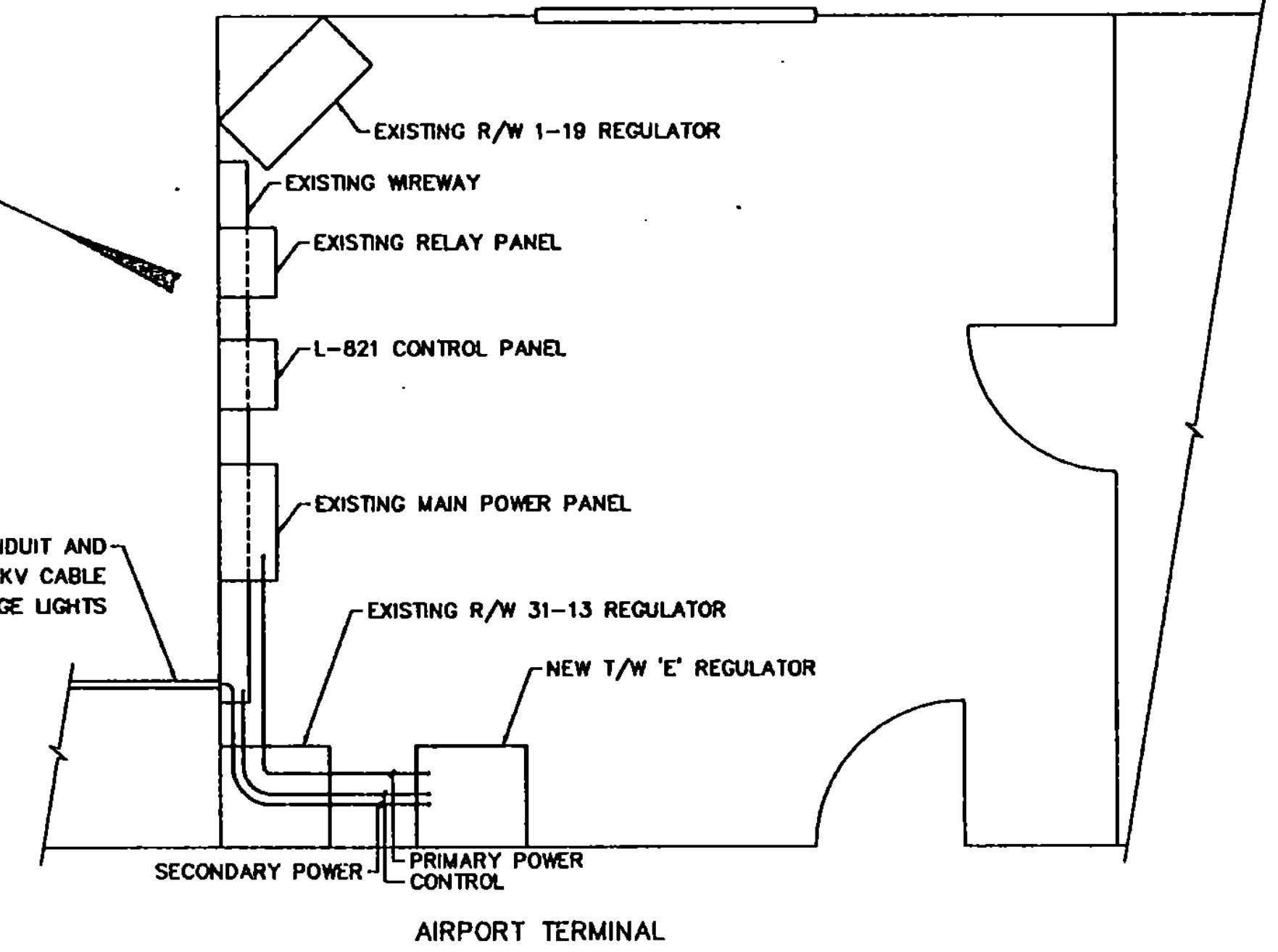
**ELECTRICAL ROOM CONDUIT ENTRANCE**  
N.T.S.



**DETAIL 5**  
SCALE: 1" = 60'



**LIGHT IDENTIFICATION TAG**  
N.T.S.



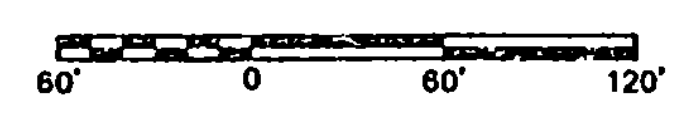
**ELECTRICAL ROOM LAYOUT**  
N.T.S.

**DUCT SCHEDULE**

- ⑤ 4 WAY 4"Ø CONCRETE ENCASED, 35 LF.
- ⑥ 4 WAY 4"Ø CONCRETE ENCASED, 24 LF.

**CROSS REFERENCES**

- GENERAL LIGHTING PLAN DRAWING NO. L1
- DETAILS 1, 2 AND 3 DRAWING NO. L1
- LIGHTING NOTES AND LEGEND DRAWING NO. L1
- SIGN PLANS DRAWING NOS. S1, S2



SEAL  
*[Signature]*

PROJECT NO.	7804	DRAWN BY:	D.W.	CHECKED BY:	L.G.
PROJECT NAME:		RUTLAND STATE AIRPORT CLARENDON, VERMONT		DATE:	
		TAXIWAY E		AUG. 23, 1983	
		LIGHTING DETAILS		SCALE: AS SHOWN	
DRAWING NO.		L2		DATE:	
				AUG. 23, 1983	
SHEET 18 OF 41				DESIGNED BY:	
				F.S.	
				ENVIRODYNE ENGINEERS, INC.	
				41 EAST 42ND ST. SUITE 1015	
				NEW YORK, NY 10017	

C. V. BARNETT ENGINEERING, INC. TEL. 405.441.1822