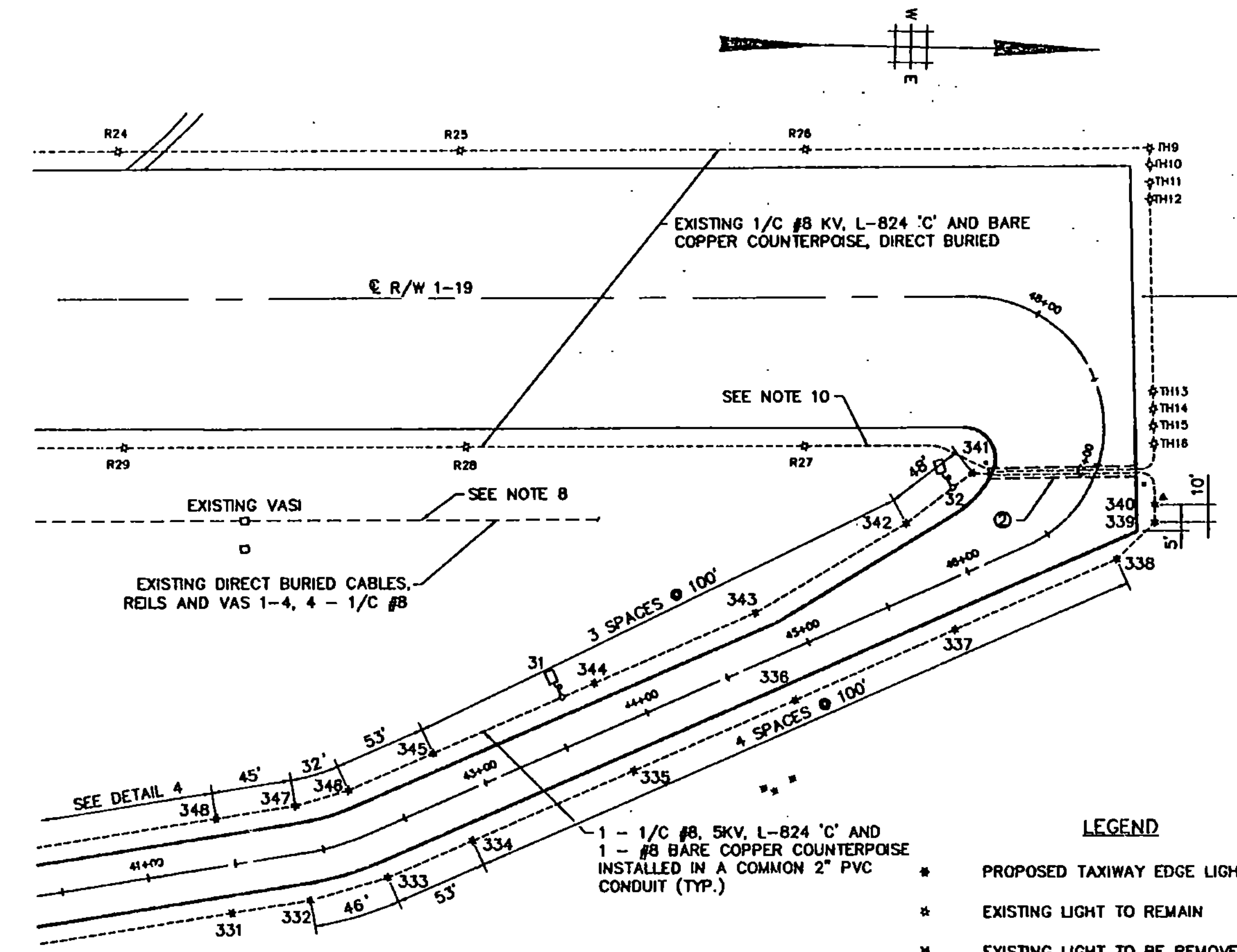
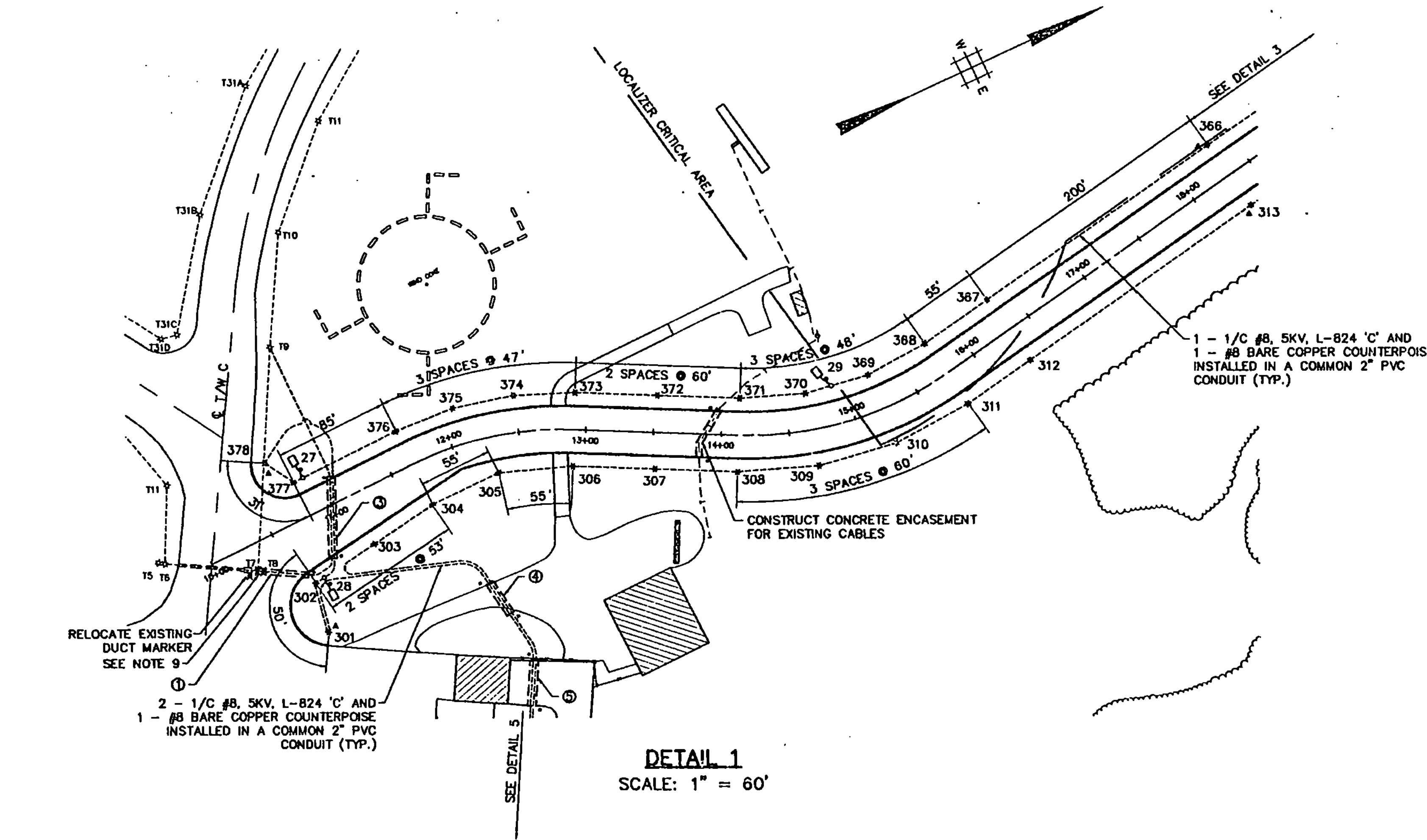


GENERAL LIGHTING PLAN
SCALE: 1" = 200'

GENERAL NOTES

1. T/W EDGE LIGHTS TO BE BASE MOUNTED UNITS. 24" IN HEIGHT. BLUE FIXTURE.
2. LAMP FIXTURE TO BE BLUE AND OF MEDIUM INTENSITY (8.6A, 30W).
3. ELECTRIC CIRCUITRY TO BE IN SERIES.
4. REFER TO VAOT STANDARD DRAWING AP-2 FOR BASE MOUNTED UNIT DETAILS, AND, CABLE AND SPLICE MARKERS. REFER TO VAOT STANDARD DRAWING AP-3 FOR DUCT BANK DETAILS.
5. REFER TO DRAWING L3 FOR TRENCH DETAILS.
6. MAXIMUM SPACING OF LIGHTS TO BE 200' O.C. DISTANCE FROM TAXIWAY PAVEMENT EDGE TO LIGHTS, 10'-0".
7. EXISTING R/W EDGE LIGHTS AND VASI TO REMAIN.
8. EXISTING REILS CABLES TO BE INSTALLED IN A NEW 4-WAY DUCT UNDER TAXIWAY AS DIRECTED BY THE ENGINEER.
9. REMOVE EXISTING TAXIWAY LIGHTS T7 AND T8. REMOVE EXISTING WIRING FROM TAXIWAY LIGHT T6 TO LIGHT T7 AND ABANDON EXISTING WIRING FROM LIGHT T8 TO LIGHT T9. PROVIDE NEW 1/C #8, 5KV, L824 'C' CABLE AND #8 BARE COUNTERPOISE FROM LIGHT T6 TO LIGHT T9 VIA DUCT BANKS 1 AND 3, AND SPLICE AT LIGHTS T6 AND T9. CONNECT NEW TAXIWAY LIGHTS 301 THRU 378 CONSECUTIVELY IN SERIES.
10. ABANDON EXISTING WIRING FROM RUNWAY LIGHTS R27 TO THRESHOLD LIGHT TH16. PROVIDE NEW 1/C #8, 5KV, L824 'C' CABLE AND #8 BARE COUNTERPOISE FROM LIGHT R27 TO THRESHOLD LIGHT TH16 VIA A NEW 4-WAY DUCTBANK AND SPLICE AT LIGHTS R27 AND TH16.
11. EXACT LOCATIONS OF ALL DUCT BANKS AND CABLE CONDUITS MUST BE APPROVED IN ADVANCE BY THE VAOT ELECTRICIAN CONTRACTOR TO CONTACT RESIDENT ENGINEER.



LEGEND

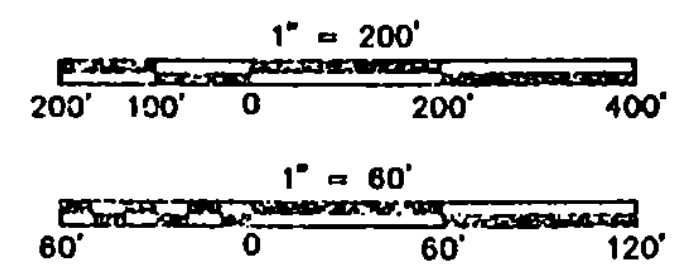
- * PROPOSED TAXIWAY EDGE LIGHT
- * EXISTING LIGHT TO REMAIN
- * EXISTING LIGHT TO BE REMOVED OR RELOCATED
- o EXISTING DUCT MARKER TO REMAIN
- x EXISTING DUCT MARKER TO BE REMOVED OR RELOCATED
- TAXIWAY SIGN AND LIGHTING CONNECTION
- ▲ PROPOSED 5/8" x 8' COPPERCLAD GROUND ROD
- ▬ PROPOSED DUCT WITH CONDUIT AND MARKERS
- ① DUCT DESIGNATION - SEE DUCT SCHEDULE

DUCT SCHEDULE

- ① 2 WAY 4" CONCRETE ENCASED 48 L.F. EXTENSION
- ② 4 WAY 4" CONCRETE ENCASED, 78 L.F.
- ③ 4 WAY 4" CONCRETE ENCASED, 81 L.F.
- ④ 4 WAY 4" CONCRETE ENCASED, 28 L.F.
- ⑤ 4 WAY 4" CONCRETE ENCASED, 35 L.F.
- ⑥ 4 WAY 4" CONCRETE ENCASED, 24 L.F.

CROSS REFERENCES

DETAILS 3, 4, 5 DRAWING NO. L2
SIGN PLANS DRAWING NOS. S1,S2



SEAL

PROJECT NO. 7804

Envirodyne Engineers, Inc.
41 East 42nd St. Suite 1015
New York, NY 10017

DESIGNED BY: F.S.
DRAWN BY: D.W.
CHECKED BY: L.G.

SCALE: AS SHOWN DATE: AUG. 23, 1993

RUTLAND STATE AIRPORT
CLARENDON, VERMONT

TAXIWAY E

LIGHTING PLAN AND DETAILS

DRAWING NO. L1

SHEET 17 OF 17