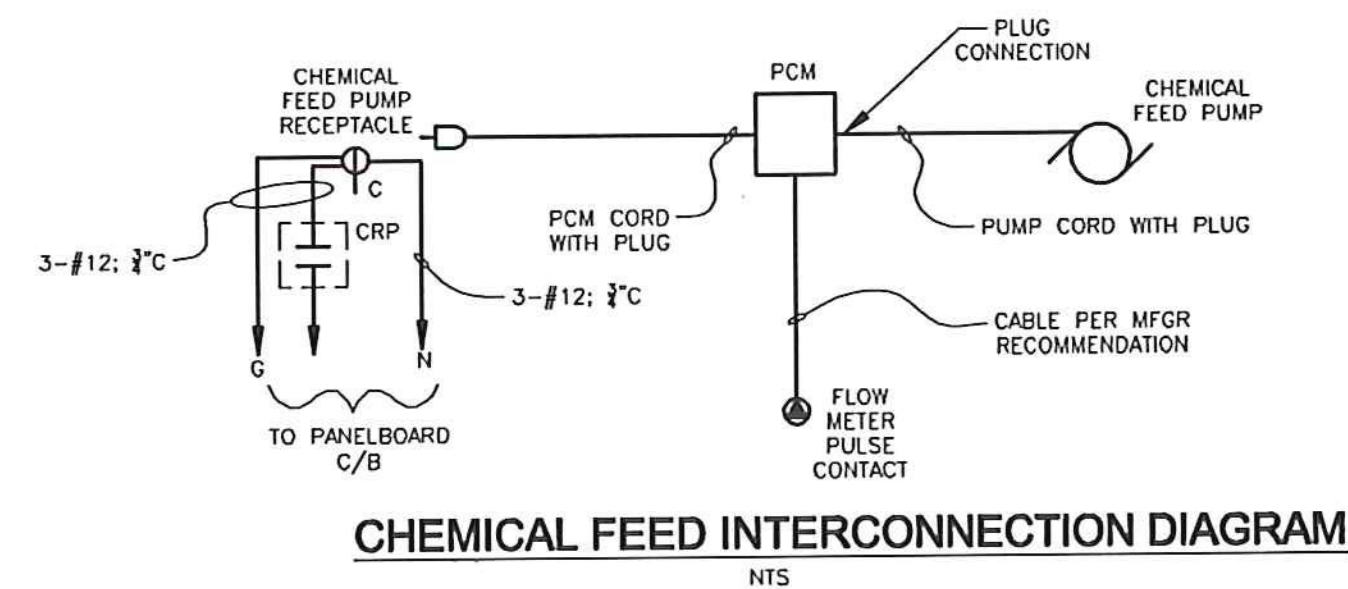
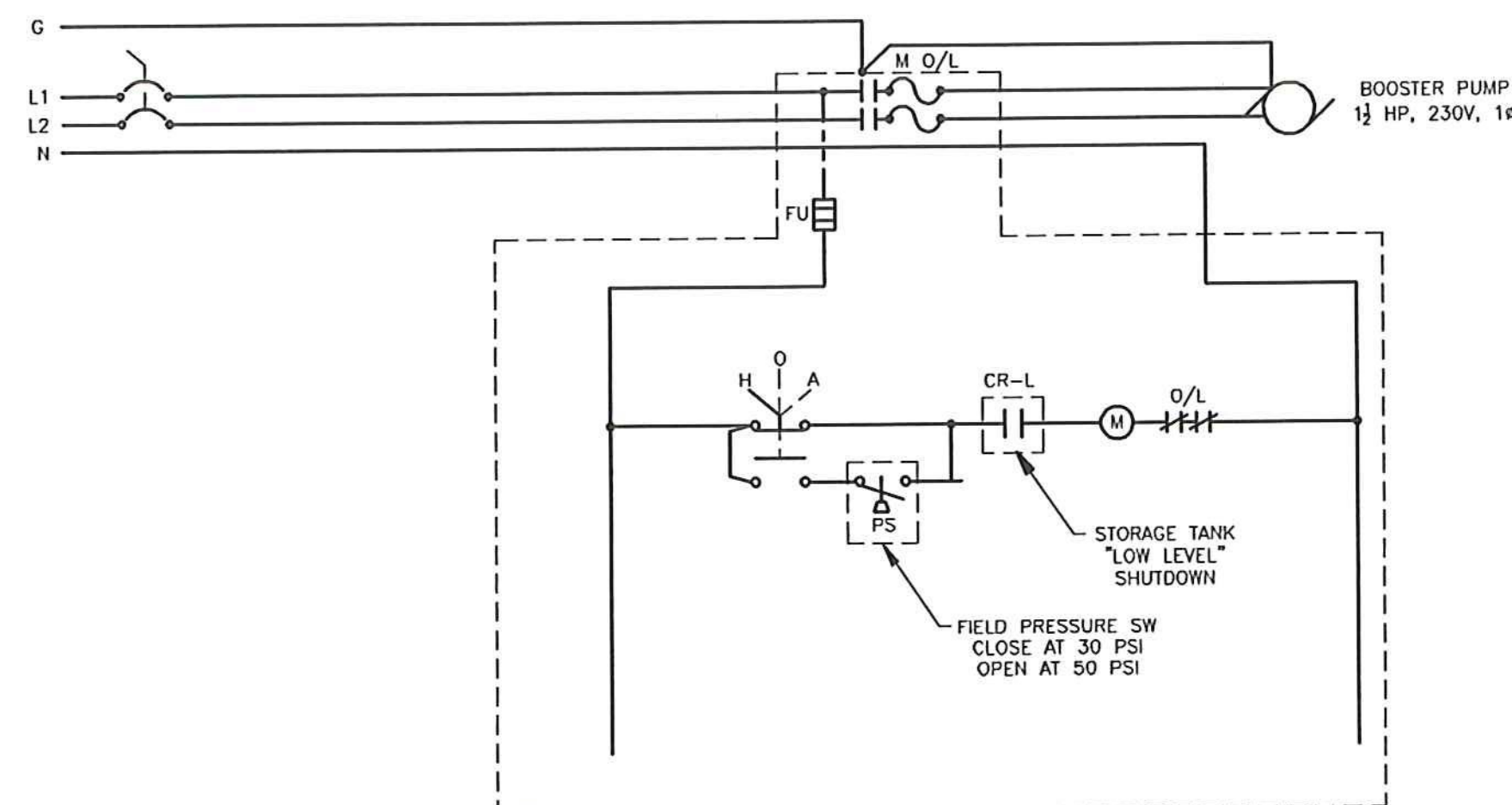


**ALARM AND CONTROL INTERFACE W/D**  
NTS

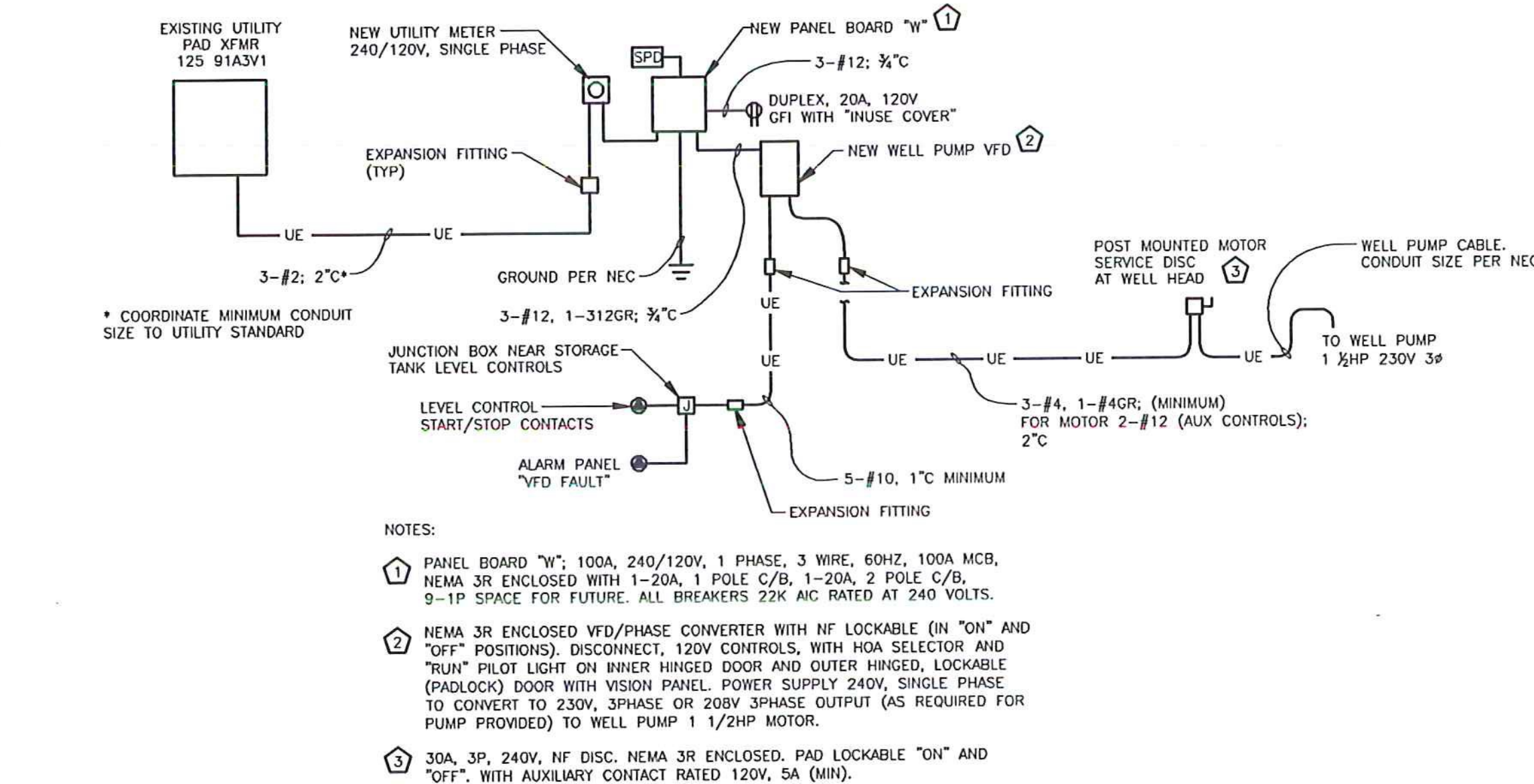
NOTE: PROVIDE NEMA 1 ENCLOSURE WITH REQUIRED TERMINAL BOARD FOR CONNECTION OF ALL FIELD WIRING AND TO CONTAIN RELAYS. PROVIDE CODE REQUIRED WARNING LABEL(S) INDICATING EXPOSED ENERGIZED TERMINALS WITHIN ENCLOSURE.



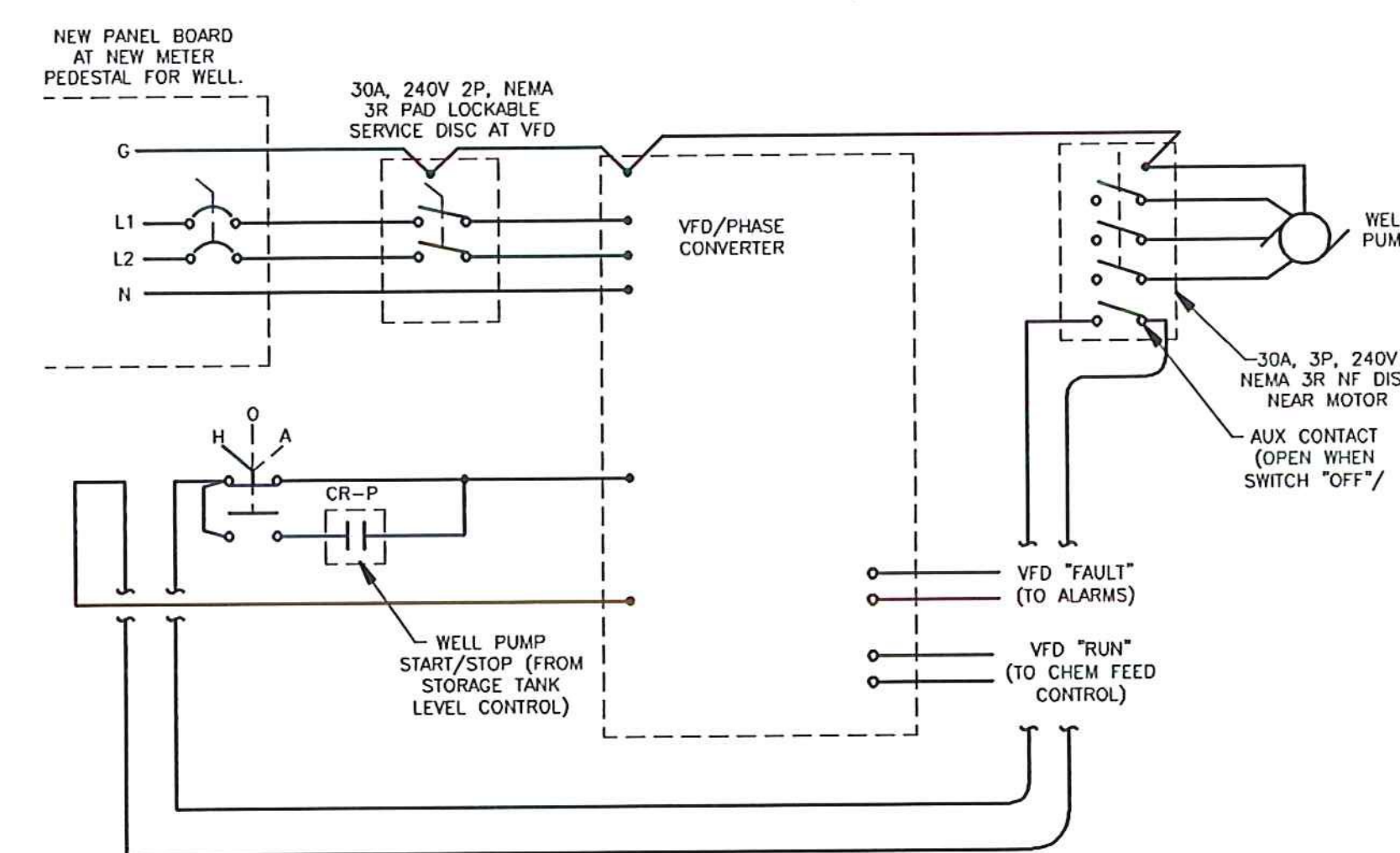
**CHEMICAL FEED INTERCONNECTION DIAGRAM**  
NTS



**BOOSTER PUMP W/D**  
NTS



**WELL PUMP POWER INTERCONNECTION BUILDING**  
NTS



**WELL PUMP W/D**  
NTS

ELECTRICAL DESIGN BY:  
**Lee F. Carroll, PE**  
Electrical Consultants  
1 Madison Ave P.O. Box 357  
Gorham, NH 03581-0357  
603-466-5005  
lcarroll@ne.rr.com



Copyright © 2015 by Lee F. Carroll, PE, Electrical Consultants. All rights reserved. No reproduction without permission.

**LEGEND**

○	LIGHT FIXTURE-LED
⚡	EMERGENCY LIGHT FIXTURE
⊕	DUPLEX RECEPTACLE - 36" AFF
⊕	SIMPLEX, CORROSION RESISTANT RECEPTACLE; 48" AFF
⊕	SINGLE POLE SWITCH; 48" AFF
⊕	CONNECTION TO FIXED EQUIPMENT
⊕	DISCONNECT SWITCH OR CIRCUIT BREAKER -AS IDENTIFIED.
⊕	MOTOR; NUMBER INDICATES HORSEPOWER
⊕	UTILITY METER
AFF	ABOVE FINISHED FLOOR
GFI	GROUND FAULT CIRCUIT INTERRUPTOR
VFD	VARIABLE FREQUENCY DRIVE
PCM	MAIN LUGS ONLY
MLO	PUMP CONTROL MODULE (CHEM FEED)
CFP	CHEMICAL FEED PUMP
LS	LEVEL SENSOR/CONTROLLER
FM	FLOW METER
WP	WATER PROOF

**FIXTURE SCHEDULE**

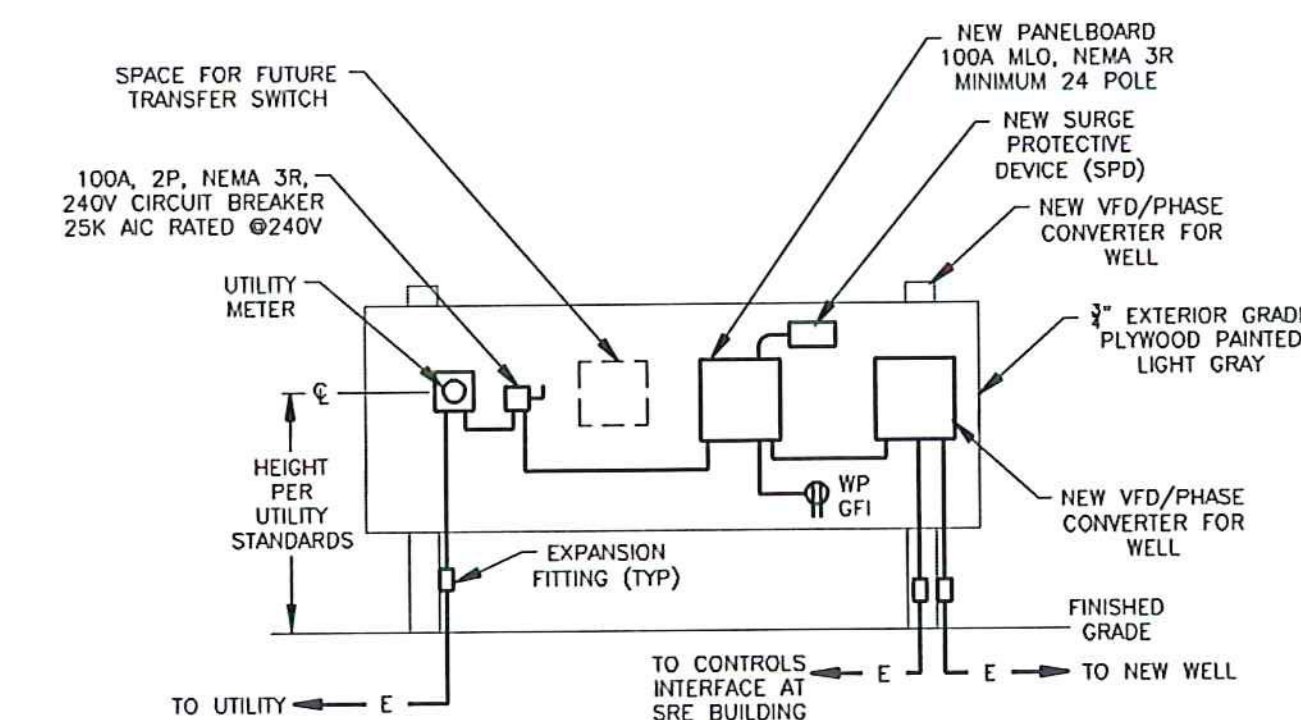
TYPE	FIXTURE MAKE / MODEL	LAMPING	MOUNTING
A	LITHONIA ZL1N-L96-6000LM-FST-MVOLT-40K-BOCRI WH WITH #C36 HANGING CHAINS	LED INCLUDED	CHAIN HANG FROM STRUCTURE
AA	HIGHLITES RL-9-SX WITH 2-12W HALOGEN HEADS	2-12W HALOGEN	WALL, 8 FT AFF

100 AMP MCB, 240/120 VOLT, 1 PHASE, 3 WIRE, 60 HERTZ

CKT. NO.	NO. POLES	RATING	DESCRIPTION
1	1	20	FURNACE & FURNACE OUTLET (EXISTING)
2	1	20	CEILING LIGHTS (BFT) (EXISTING)
3	1	20	CEILING LIGHTS (BFT) (EXISTING)
4	1	20	FUEL PUMP (EXISTING)
5	1	20	OUTLET BY WORKBENCH (EXISTING)
6	1	20	OVER HEAD DOOR (EXISTING)
7	1	20	(EXISTING)
8	1	20	AIR COMPRESSOR (EXISTING)
9	1	20	? SPARE (EXISTING)
10	1	20	? SPARE (EXISTING)
11	1	20	GATE CONTROL (EXISTING)
12,14	2	20*	NEW-BOOSTER PUMP
13	1	20*	NEW-LEVEL CONTROL, ALARMS, & CHEMFEED
15	1	20	NEW SERVICE OUTLET-WATER SYSTEM
16	1	20*	NEW LIGHTS-WATER SYSTEM
17-20	2	**	SPD

EXISTING PANEL ALTER CIRCUIT & DISTRIBUTION TO FEED NEW WATER SYSTEM LIGHTS FROM NEW CIRCUIT 16. EXISTING PANEL: SQUARE D, TYPE N GDB. BREAKERS 10,000 AC RATED.

\* PROVIDE HANDLE LOCK ON CIRCUITS  
\*\* RATING AS RECOMMENDED BY SPD MANUFACTURER



**TYPICAL PROPOSED LAYOUT OF ELECTRICAL EQUIPMENT NEW WELL SERVICE AND DISTRIBUTION**  
NTS

SCHEDULE A - WATER SYSTEM - BID SET  
VTRANS PROJECT #AV11570042-301  
JUNE 2016

REV	DATE	DESCRIPTION	BY

**McFarland Johnson**  
53 REGIONAL DRIVE  
CONCORD, NH 03301

IT IS A VIOLATION OF LAW FOR ANY PERSON, UNLESS THEY ARE ACTING UNDER THE DIRECT SUPERVISION OF A LICENSED PROFESSIONAL ENGINEER, ARCHITECT, LANDSCAPE ARCHITECT, OR LAND SURVEYOR, TO ALTER THESE PLANS IN ANY WAY. IF AN ITEM BEARING THE STAMP OF A LICENSED PROFESSIONAL IS ALTERED, THE ALTERING ENGINEER, ARCHITECT, LANDSCAPE ARCHITECT, OR LAND SURVEYOR SHALL STAMP THE DOCUMENT AND INCLUDE THE NOTATION "ALTERED BY" FOLLOWED BY THEIR SIGNATURE, THE DATE OF SUCH ALTERATION, AND A SPECIFIC DESCRIPTION OF THE ALTERATION.

NEWPORT STATE AIRPORT  
CONVENTRY, VERMONT  
WATER SYSTEM PERMIT TO CONSTRUCT

**ELECTRICAL DETAILS**

SCALE: NTS	DESIGN: LFC	E-2
DRAWN: IGT	PROJECT: 17958.01	
CHECKED: LFC	DATE: 10/09/15	

5 OF 5