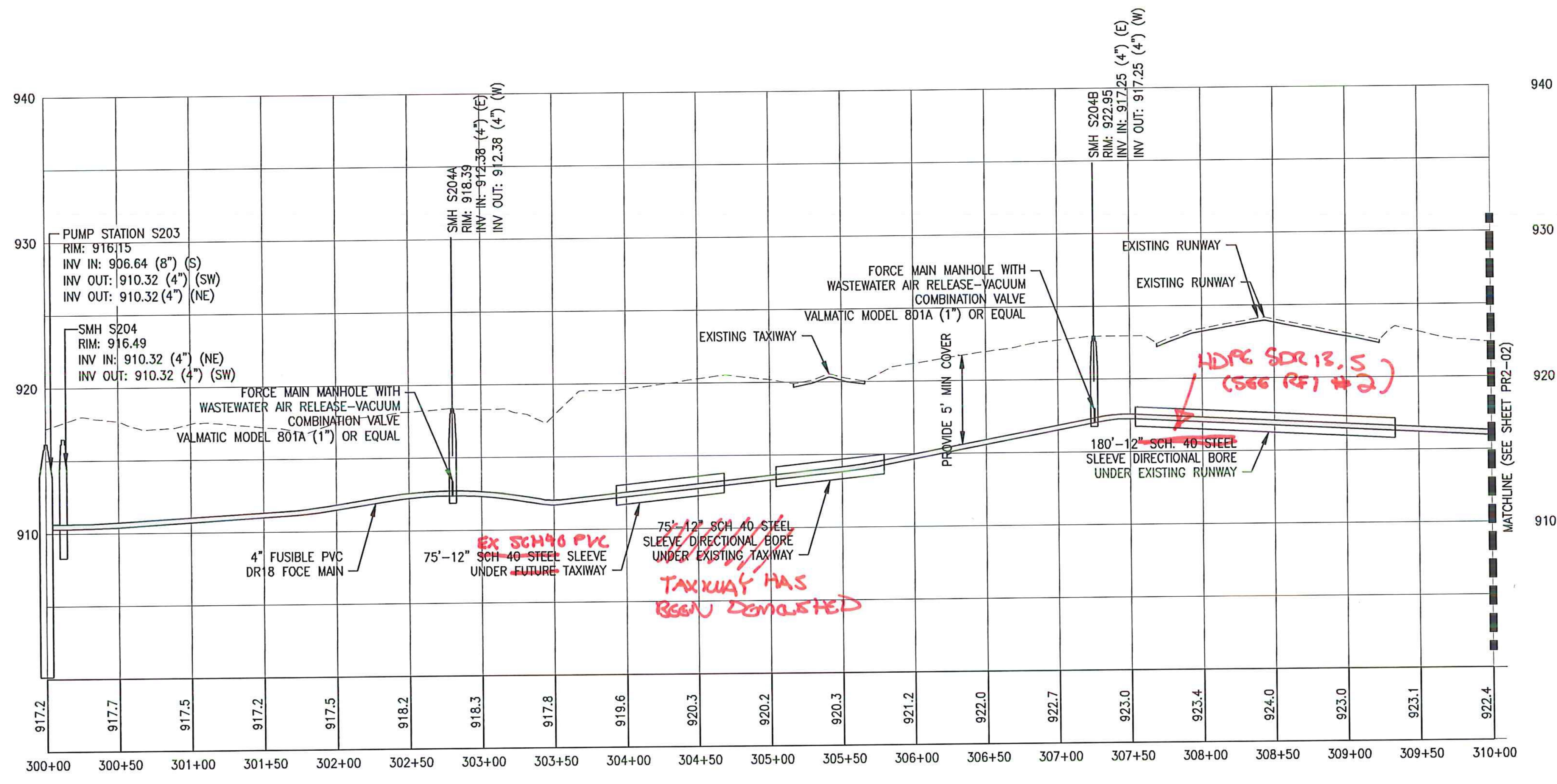
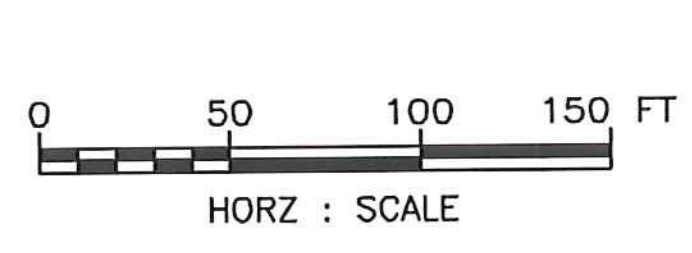
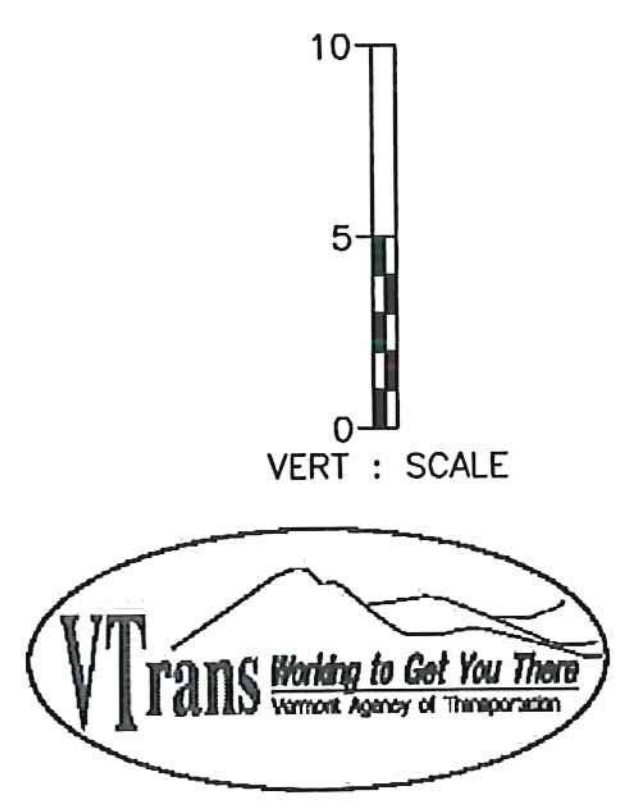


NOTE: BASED ON PERMIT CONDITION WITH REGARD TO INFILTRATION, COLLECTION GRAVITY SEWER PIPE SHALL BE BUTT FUSED PVC.



NOTE: FORCE MAIN PIPE MAY BE EITHER FUSIBLE PVC DR 18 (C-900 FPVC) OR FUSIBLE HDPE DR9 (C-906).



SCHEDULE B - WASTEWATER SYSTEM - BID SET
VTRANS PROJECT #AV1157046-301
JUNE 2016

REV	DATE	DESCRIPTION	BY
5	5/3/15	COLD WEATHER MODIFICATIONS	BMB
4	4/29/15	PERMITTING MODIFICATIONS	SKI
3	1/30/15	WW SYSTEM MODIFICATIONS	BMB
2	8/5/14	ANR COMMENTS	TCB
1	4/18/14	ADD 400-SERIES TEST PITS	CH

IT IS A VIOLATION OF LAW FOR ANY PERSON, UNLESS THEY ARE ACTING UNDER THE DIRECT DIRECTION OF A LICENSED PROFESSIONAL ENGINEER, ARCHITECT, LANDSCAPE ARCHITECT, OR LAND SURVEYOR, TO ALTER AN ITEM IN ANY WAY. IF AN ITEM BEARING THE STAMP OF A LICENSED PROFESSIONAL IS ALTERED, THE ALTERING ENGINEER, ARCHITECT, LANDSCAPE ARCHITECT, OR LAND SURVEYOR SHALL STAMP THE DOCUMENT AND INCLUDE THE NOTATION "ALTERED BY" FOLLOWED BY THEIR SIGNATURE, THE DATE OF SUCH ALTERATION, AND A SPECIFIC DESCRIPTION OF THE ALTERATION.

NEWPORT STATE AIRPORT
COVENTRY, VERMONT
NEWPORT WASTEWATER

SITE 2 - SANITARY PROFILE 1



SCALE: H 1:50, V 1:5	DESIGN: TCB	PR2-01 25 OF 36
DRAWN: TCB	PROJECT: 17958.01	
CHECKED: BLS	DATE: JUNE, 2014	