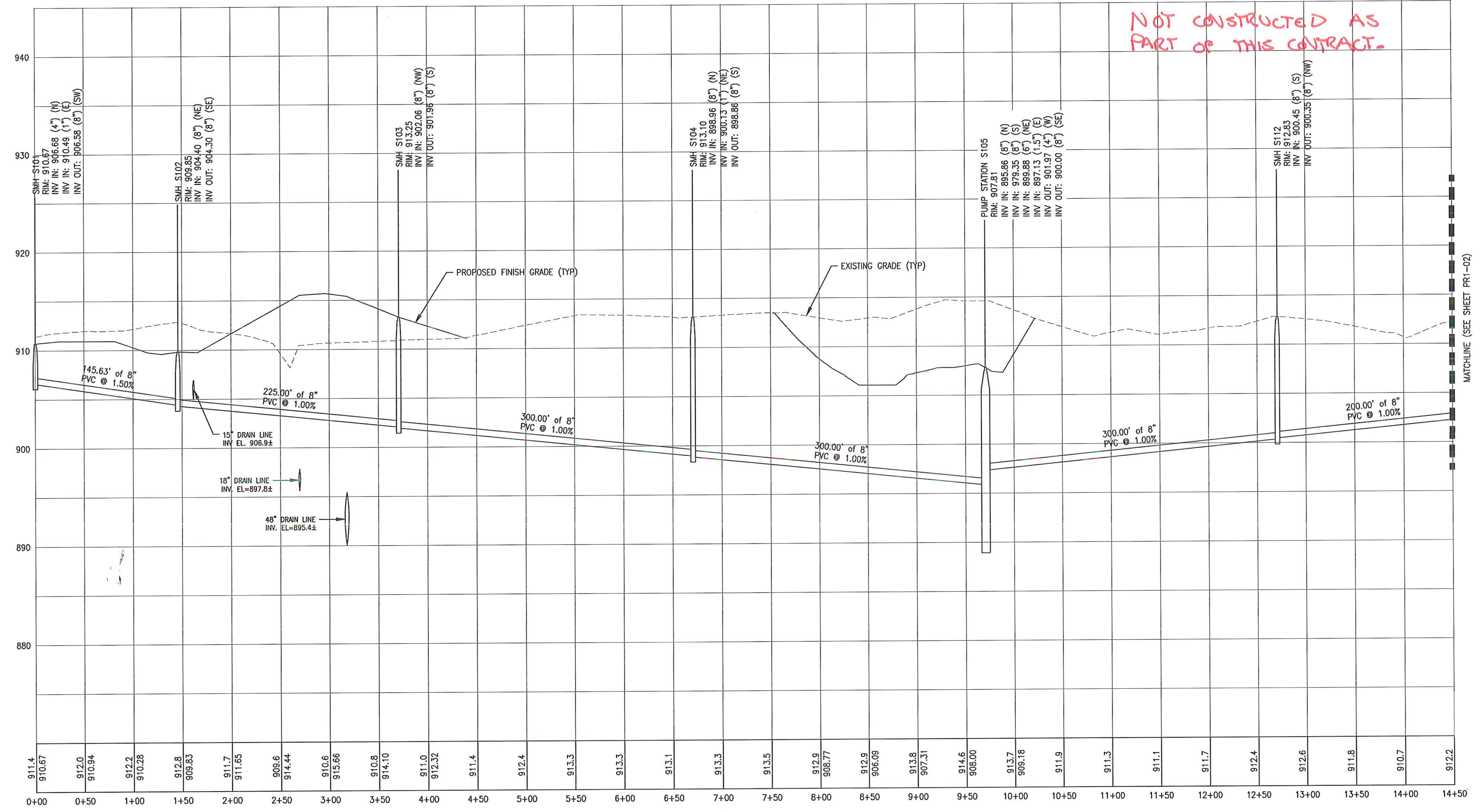
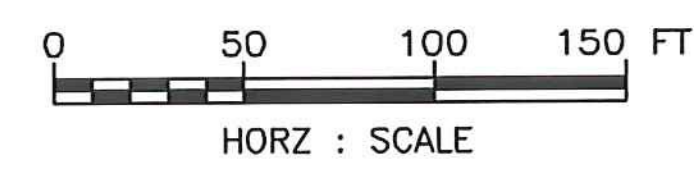
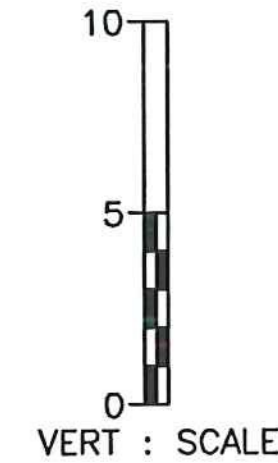


NOT CONSTRUCTED AS PART OF THIS CONTRACT.



911.4 910.67 912.0 910.94 912.2 910.28 912.8 909.83 911.7 911.65 909.6 914.44 910.6 913.66 910.8 914.10 911.0 912.32 911.4 912.4 913.3 913.3 913.1 913.3 913.5 912.9 908.77 912.9 906.09 913.8 907.31 914.6 908.00 913.7 909.18 911.9 911.3 911.1 911.7 912.4 912.6 911.8 910.7 912.2

MATCHLINE (SEE SHEET PR1-02)



PERMIT PLANS

5	5/3/15	COLD WEATHER MODIFICATIONS	BMB
4	4/29/15	PERMITTING MODIFICATIONS	SKI
3	1/30/15	WW SYSTEM MODIFICATIONS	BMB
2	8/5/14	ANR COMMENTS	TCB
1	4/18/14	ADD 400-SERIES TEST PITS	CH
REV	DATE	DESCRIPTION	BY

IT IS A VIOLATION OF LAW FOR ANY PERSON, UNLESS THEY ARE ACTING UNDER THE DIRECT DIRECTION OF A LICENSED PROFESSIONAL ENGINEER, ARCHITECT, LANDSCAPE ARCHITECT, OR LAND SURVEYOR, TO ALTER AN ITEM IN ANY WAY. IF AN ITEM BEARING THE STAMP OF A LICENSED PROFESSIONAL IS ALTERED, THE ALTERING ENGINEER, ARCHITECT, LANDSCAPE ARCHITECT, OR LAND SURVEYOR SHALL STAMP THE DOCUMENT AND INCLUDE THE NOTATION "ALTERED BY" FOLLOWED BY THEIR SIGNATURE, THE DATE OF SUCH ALTERATION, AND A SPECIFIC DESCRIPTION OF THE ALTERATION.

NEWPORT STATE AIRPORT
COVENTRY, VERMONT
NEWPORT WASTEWATER

SITE 1 - SANITARY PROFILE 1



McFarland Johnson
53 REGIONAL DRIVE
CONCORD, NH 03301

SCALE: H 1:50, V 1:5	DESIGN: TCB	PR1-01 10 OF 36
DRAWN: TCB	PROJECT: 17958.01	
CHECKED: BLS	DATE: JUNE, 2014	