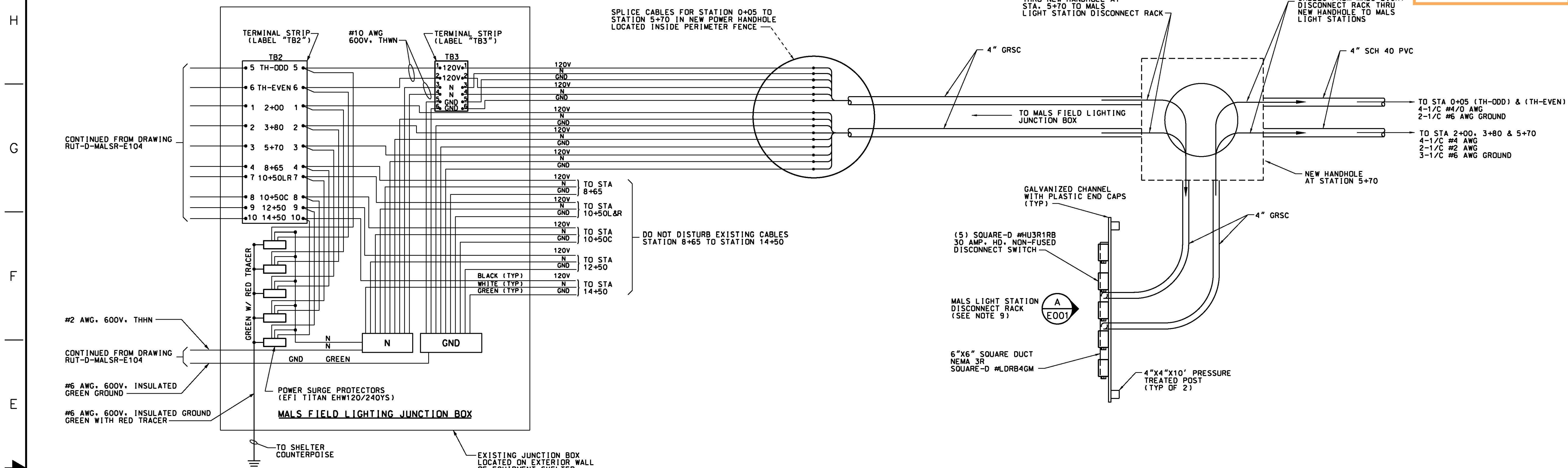


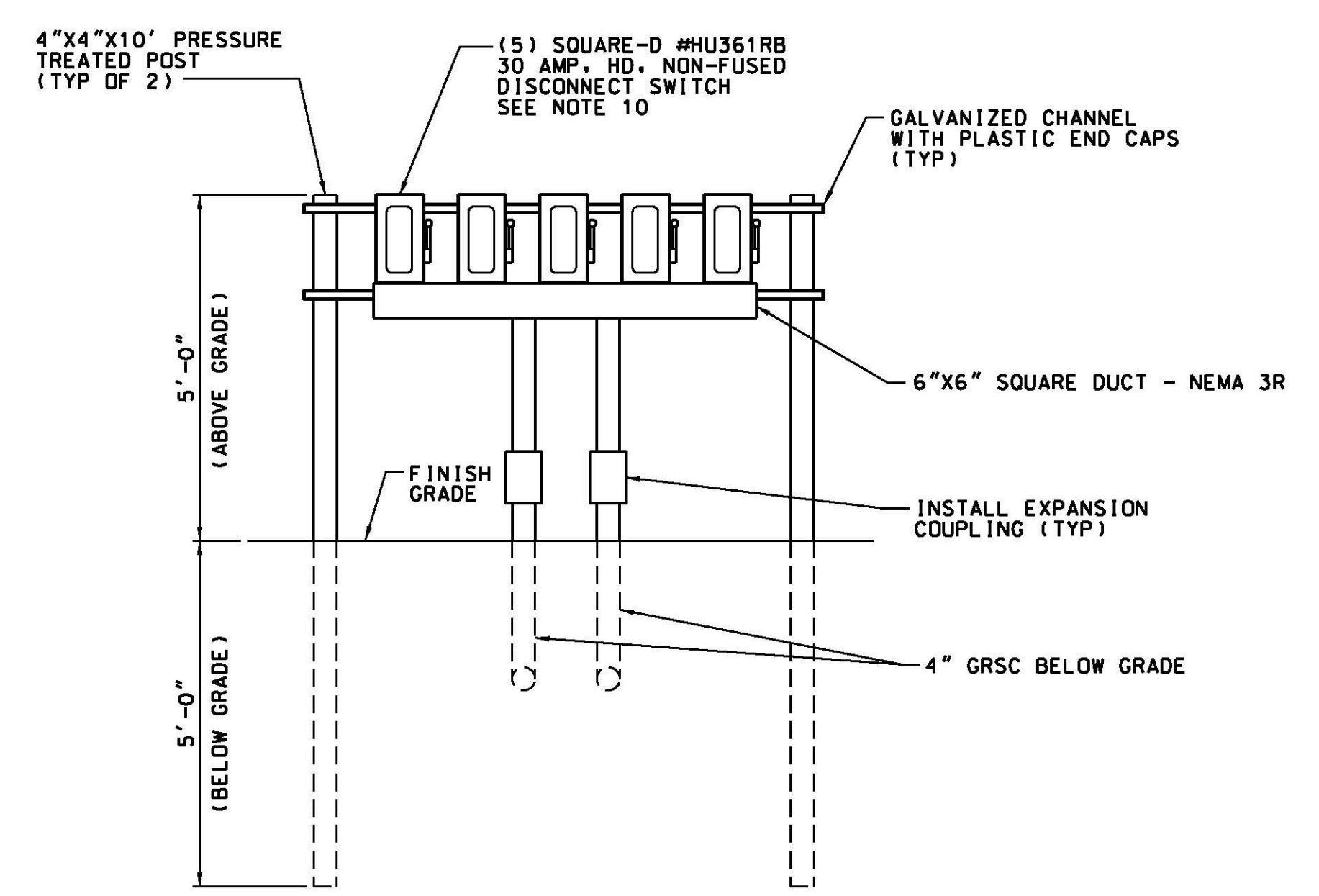
8 7 6 5 4 3 2 1

Record Drawings
Work completed in general conformance with contract plans.



1 ELECTRICAL DETAILS
E001 NOT TO SCALE

- NOTES:**
- ALL WIRING SHALL MEET THE LATEST EDITION OF NFPA 70, THE NATIONAL ELECTRIC CODE (NEC), AND FAA STD-019E, LIGHTNING AND SURGE PROTECTION, GROUNDING, BONDING AND SHIELDING REQUIREMENTS FOR FACILITIES AND ELECTRONIC EQUIPMENT.
 - POWER AND GROUND WIRES SHALL BE SINGLE CONDUCTOR UNLESS OTHERWISE SPECIFIED.
 - EACH CIRCUIT SHALL MAINTAIN AN INDIVIDUAL NEUTRAL AND GROUND CONDUCTOR EXCEPT WHERE INDICATED OTHERWISE.
 - WHERE POSSIBLE, POWER CABLES AND CONTROL/DATA CABLES SHALL RUN IN INDEPENDENT CONDUIT. SEPARATE POWER AND CONTROL/DATA CABLES IN COMMON ENCLOSURES.
 - ALL UNUSED CONDUCTORS SHALL BE GROUNDED AT BOTH ENDS.
 - FORK VINYL INSULATED CRIMP-ON LUGS SHALL BE USED FOR WIRE TERMINATIONS UNLESS OTHERWISE DIRECTED.
 - TERMINAL STRIPS SHALL BE PROPERLY SIZED FOR REQUIRED CONDUCTORS.
 - ALL WIRES SHALL BE COLOR CODED AS INDICATED OR AS DIRECTED: LINE 1: BLACK; LINE 2: RED; NEUTRAL: WHITE; NEC GROUND: GREEN ELECTRONIC (MULTI-POINT) GROUND: GREEN W/ RED TRACER SURGE PROTECTION GROUND: GREEN W/ RED TRACER.
 - INSTALL LIGHT STATION DISCONNECT RACK PARALLEL WITH RUNWAY END AT A MINIMUM OF 602 FEET FROM RUNWAY END.
 - LABEL EACH DISCONNECT SWITCH (TH-ODD, TH-EVEN, STA 2+00, STA 3+80, STA 5+70).



A DISCONNECT SWITCH RACK ELEVATION
E001 SCALE: 1/2"=1'-0"

REV	APPROVED DATE	DESCRIPTION	JCN	REDLINE DATE	APVD
05/20/2013		CONSTRUCTION, WR *12507 (DG)	992395	10/02/2012	

DEPARTMENT OF TRANSPORTATION
FEDERAL AVIATION ADMINISTRATION
ATO - TECHNICAL OPERATIONS EASTERN SERVICE AREA

MALSR
RUNWAY 19
ELECTRICAL DETAILS

RUTLAND	RUTLAND - SOUTHERN VERMONT REGIONAL AIRPORT	VT
REVIEWED BY	SUBMITTED BY	APPROVED BY
PROJECT ENGINEER	MGR: CONSTRUCTION	- CENTER C
DESIGNED	ISSUED BY	DATE
		05/20/2013
DRAWN	ENGINEERING SERVICES	DRAWING NO
		992395
CHECKED	NAVAIDS	RUT-NEZ120015-E001

11/14/2013 10:09:53 AM Plotted by: Linda CTR LoPa

ISSUED FOR: CONSTRUCTION

8 7 6 5 4 3 2 1