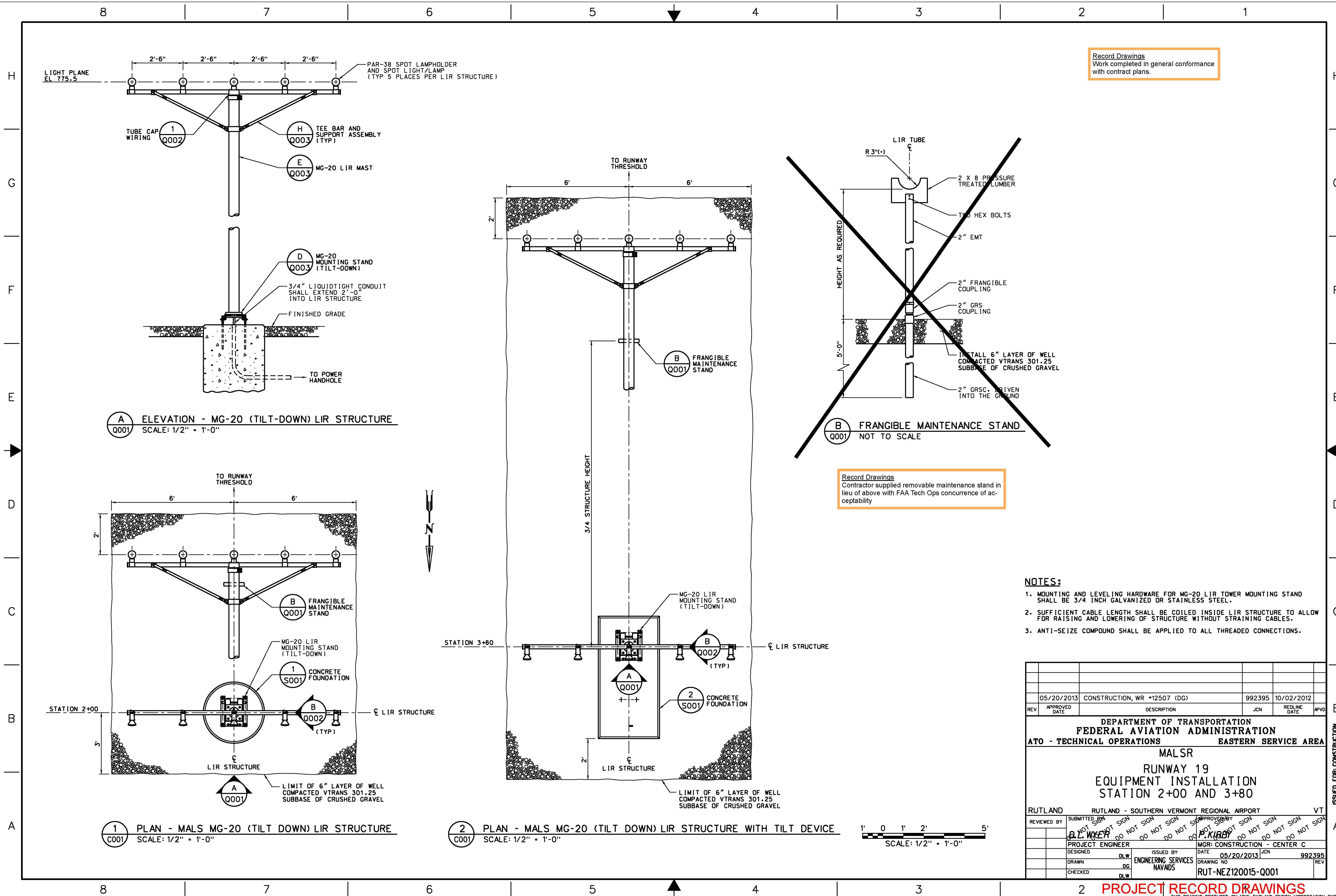


Record Drawings  
Work completed in general conformance with contract plans.



**(A)** ELEVATION - MG-20 (TILT-DOWN) LIR STRUCTURE  
SCALE: 1/2" = 1'-0"

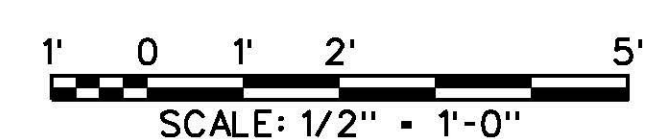
**(1)** PLAN - MALS MG-20 (TILT DOWN) LIR STRUCTURE  
SCALE: 1/2" = 1'-0"

**(2)** PLAN - MALS MG-20 (TILT DOWN) LIR STRUCTURE WITH TILT DEVICE  
SCALE: 1/2" = 1'-0"

Record Drawings  
Contractor supplied removable maintenance stand in lieu of above with FAA Tech Ops concurrence of acceptability

- NOTES:**
1. MOUNTING AND LEVELING HARDWARE FOR MG-20 LIR TOWER MOUNTING STAND SHALL BE 3/4 INCH GALVANIZED OR STAINLESS STEEL.
  2. SUFFICIENT CABLE LENGTH SHALL BE COILED INSIDE LIR STRUCTURE TO ALLOW FOR RAISING AND LOWERING OF STRUCTURE WITHOUT STRAINING CABLES.
  3. ANTI-SEIZE COMPOUND SHALL BE APPLIED TO ALL THREADED CONNECTIONS.

REV	APPROVED DATE	DESCRIPTION	JCN	REDLINE DATE	APVD
	05/20/2013	CONSTRUCTION, WR *12507 (DG)	992395	10/02/2012	
DEPARTMENT OF TRANSPORTATION <b>FEDERAL AVIATION ADMINISTRATION</b> <b>ATO - TECHNICAL OPERATIONS</b> <b>EASTERN SERVICE AREA</b>					
<b>MALSR</b> <b>RUNWAY 19</b> <b>EQUIPMENT INSTALLATION</b> <b>STATION 2+00 AND 3+80</b>					
RUTLAND      RUTLAND - SOUTHERN VERMONT REGIONAL AIRPORT      VT					
REVIEWED BY	APPROVED BY	DATE	ISSUED BY		
		05/20/2013	MGR: CONSTRUCTION - CENTER C		
DESIGNED	DLW	ISSUED BY	DATE	JCN	992395
DRAWN	DG	ENGINEERING SERVICES	05/20/2013		REV
CHECKED	DLW	NAVAIDS	RUT-NEZ120015-Q001		



11/14/2013 10:00:08 AM Plotted by: Linda CTR LoPa

EDM: rut-nez120015-q001.dwg