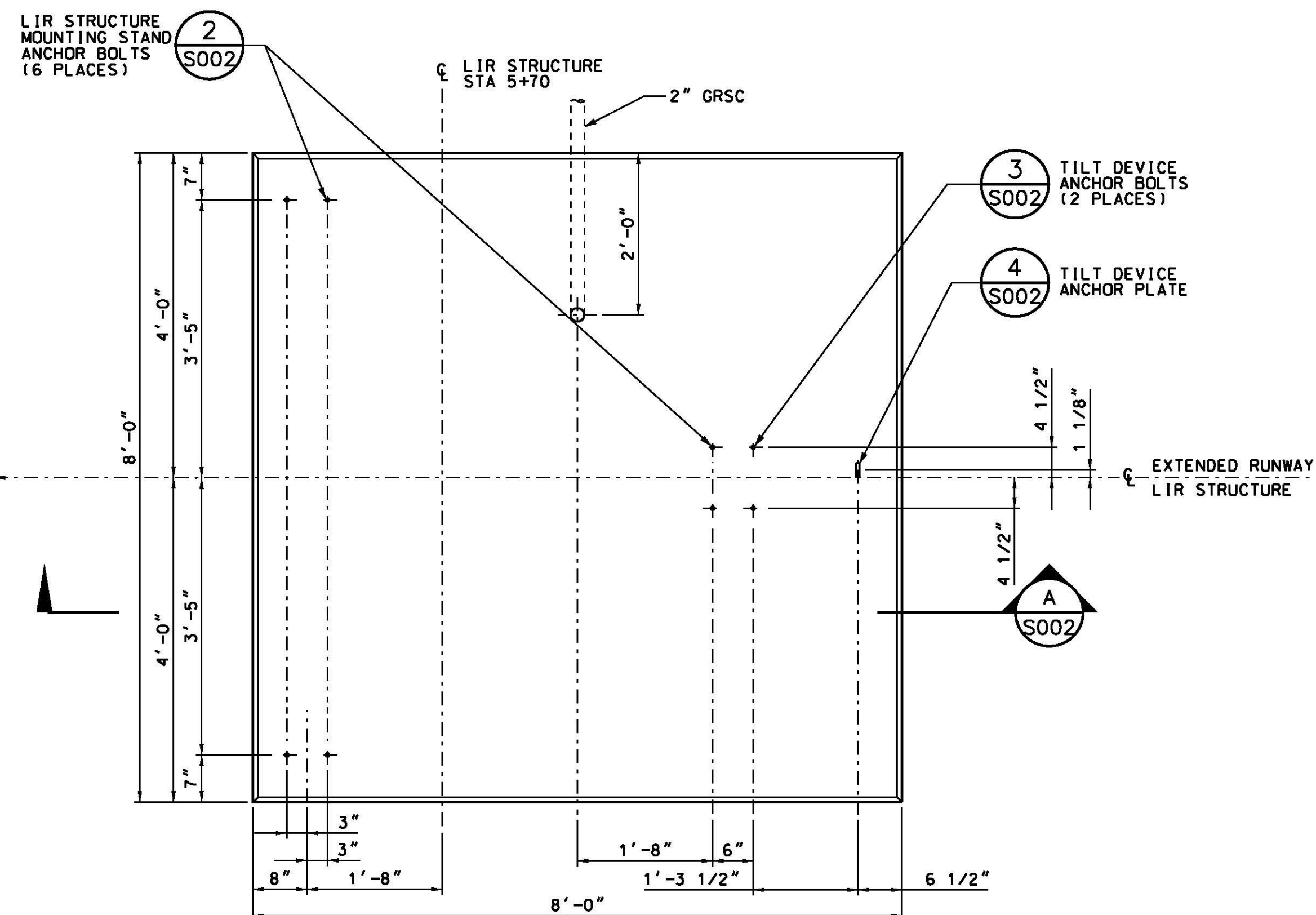
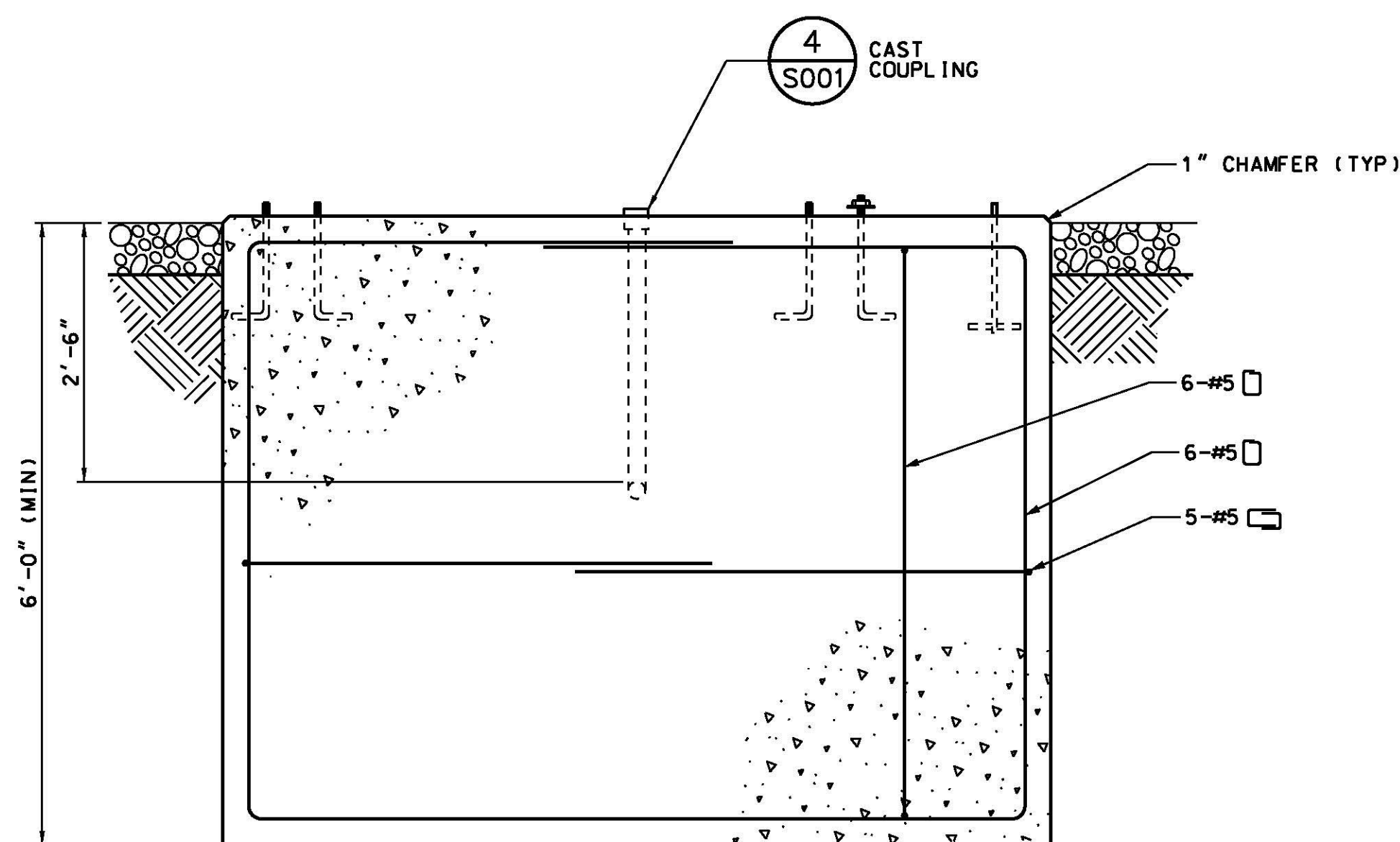


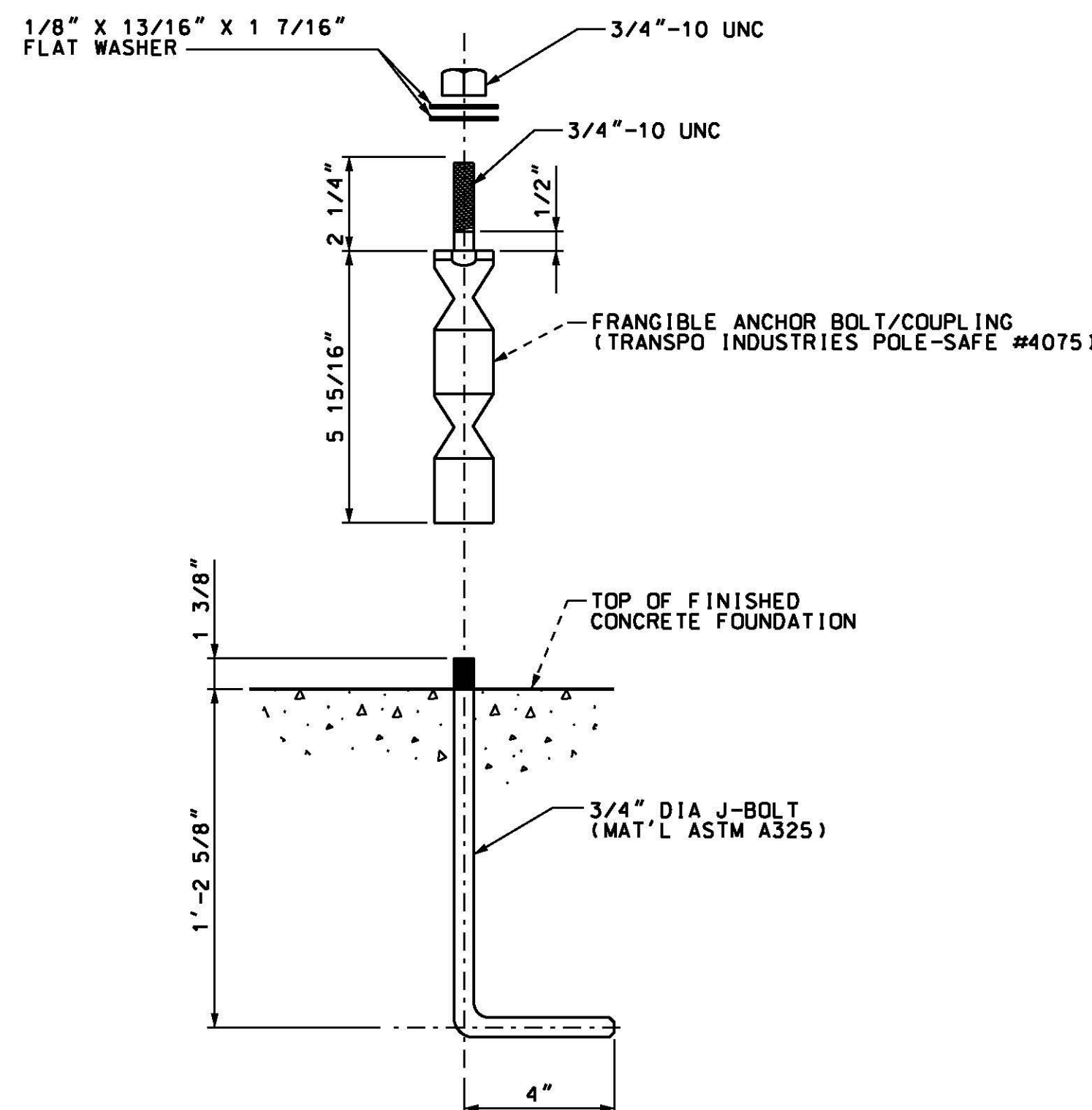
8 7 6 5 4 3 2 1



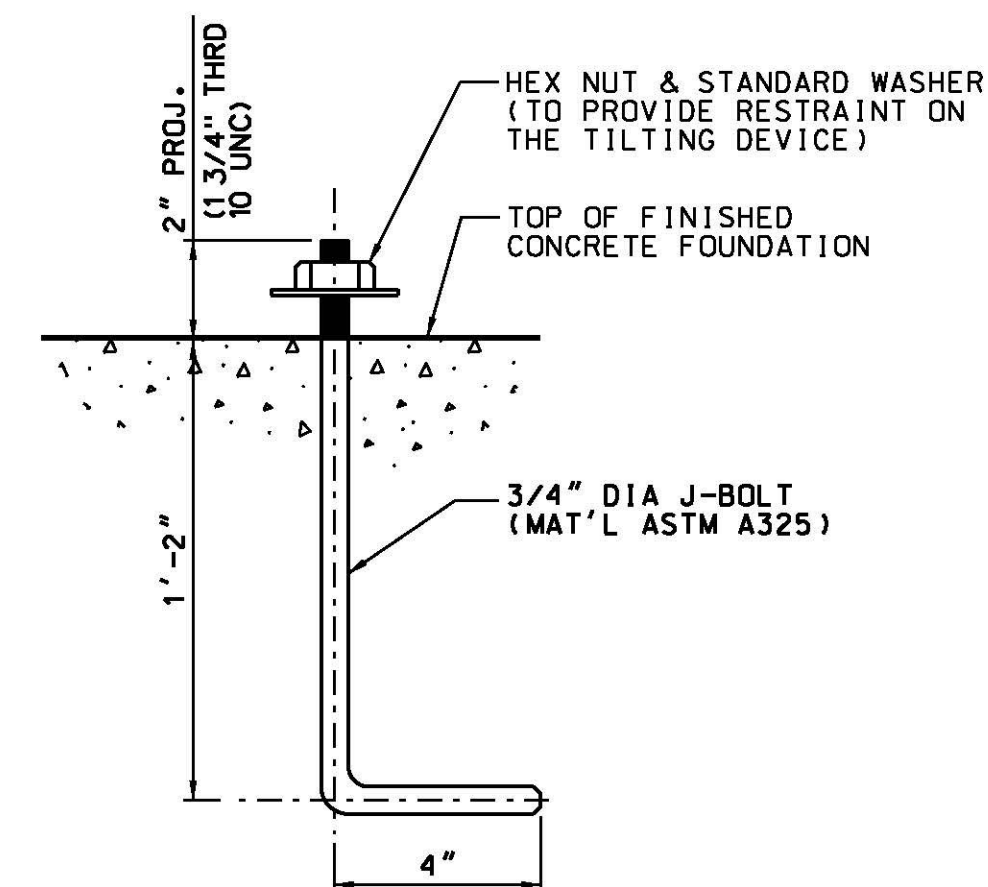
1 PLAN - MG-30 FOUNDATION AT STATION 5+70  
C001 Q002 SCALE: 3/4" = 1'-0"



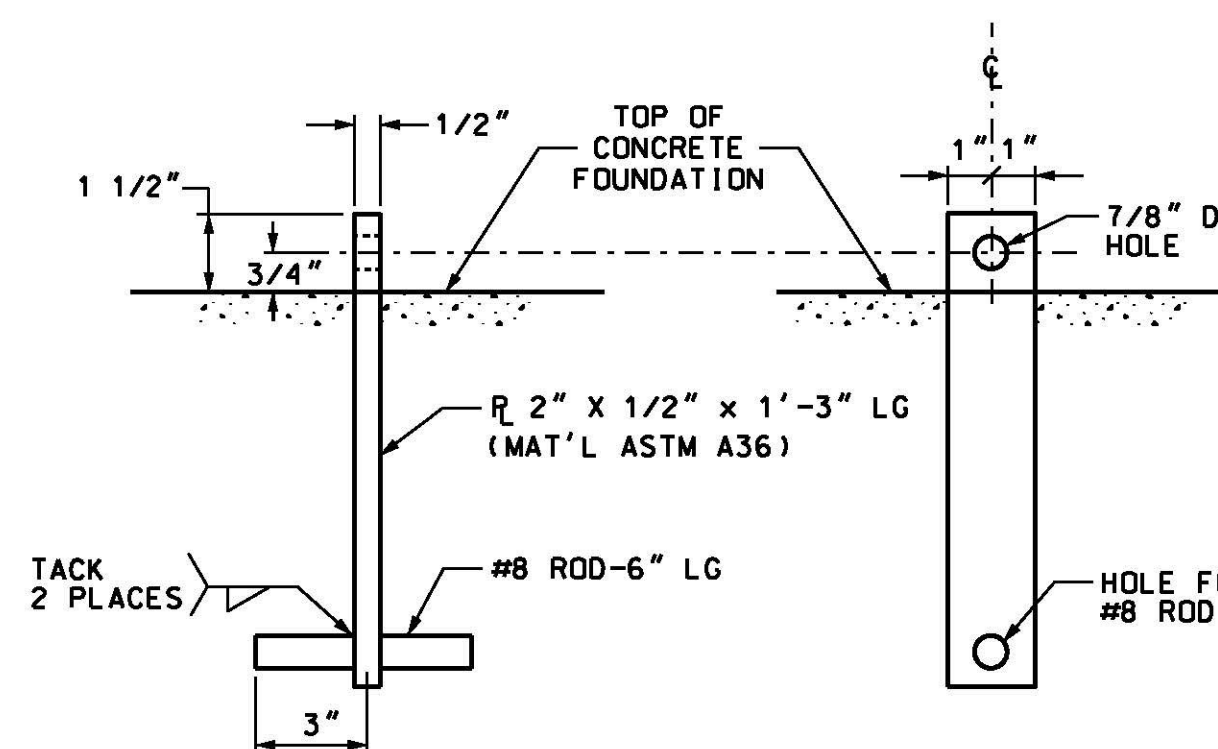
A SECTION - MG-30 FOUNDATION  
S002 SCALE: 3/4" = 1'-0"



2 LIR STRUCTURE FRANGIBLE ANCHOR BOLT  
S001 S002 NOT TO SCALE SEE NOTE 4



3 TILT DEVICE ANCHOR BOLT  
S001 S002 NOT TO SCALE SEE NOTE 4



4 TILT DEVICE ANCHOR PLATE DETAIL  
S001 S002 NOT TO SCALE

Record Drawings  
Work completed in general conformance with contract plans.

NOTES:

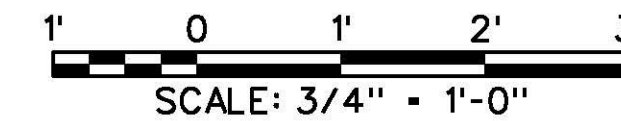
1. CONCRETE SHALL DEVELOP 3000 PSI IN 28 DAYS WITH A MAXIMUM SLUMP OF 3 INCHES AND A MAXIMUM AGGREGATE SIZE OF 3/4 INCHES. ALL CONCRETE WORK SHALL COMPLY WITH ACI-304, "RECOMMENDED PRACTICE FOR MEASURING, MIXING, AND PLACING CONCRETE"; ACI-308, "STANDARD PRACTICE FOR CURING CONCRETE"; AND ACI-347, "RECOMMENDED PRACTICE FOR CONCRETE FORMWORK".
2. ALL REINFORCEMENT STEEL SHALL COMPLY WITH ASTM A615, GRADE 60.
3. THE CONTRACTOR SHALL PREPARE THE BOTTOM OF THE FOUNDATION EXCAVATION SUCH THAT THE FOUNDATION IS SET ON COMPACTED STRUCTURAL GRAVEL WITH A MINIMUM BEARING CAPACITY OF 3000 POUNDS PER SQUARE FOOT.
4. IN LIEU OF CAST-IN-PLACE ANCHOR BOLTS FOR MG-20 AND MG-30 LIR STRUCTURES, THE CONTRACTOR MAY INSTALL 3/4" STAINLESS STEEL THREADED RODS SET IN TWO-PART EPOXY COMPOUND. THREADED RODS SHALL BE EMBEDDED A MINIMUM DEPTH OF 10" BELOW THE TOP OF CONCRETE.

REV	APPROVED DATE	DESCRIPTION	JCN	REDLINE DATE	APVD
	05/20/2013	CONSTRUCTION, WR #12507 (DG)	992395	10/02/2012	

DEPARTMENT OF TRANSPORTATION  
FEDERAL AVIATION ADMINISTRATION  
ATO - TECHNICAL OPERATIONS EASTERN SERVICE AREA

MALSR  
RUNWAY 19  
FOUNDATION DESIGN - MG-30 LIR STRUCTURE  
STATION 5+70

RUTLAND	RUTLAND - SOUTHERN VERMONT REGIONAL AIRPORT	VT
REVIEWED BY	DATE	APPROVED BY
D.L. WIKER	05/20/2013	P. KIRBY
PROJECT ENGINEER	MGR: CONSTRUCTION - CENTER C	
DESIGNED BY	ISSUED BY	DATE
DLW	DLW	05/20/2013
DRAWN BY	ENGINEERING SERVICES	DRAWING NO
DG	NAVAIDS	RUT-NEZ120015-S002
CHECKED BY		REV
DLW		



8 7 6 5 4 3 2 1