

DRAWING LIST

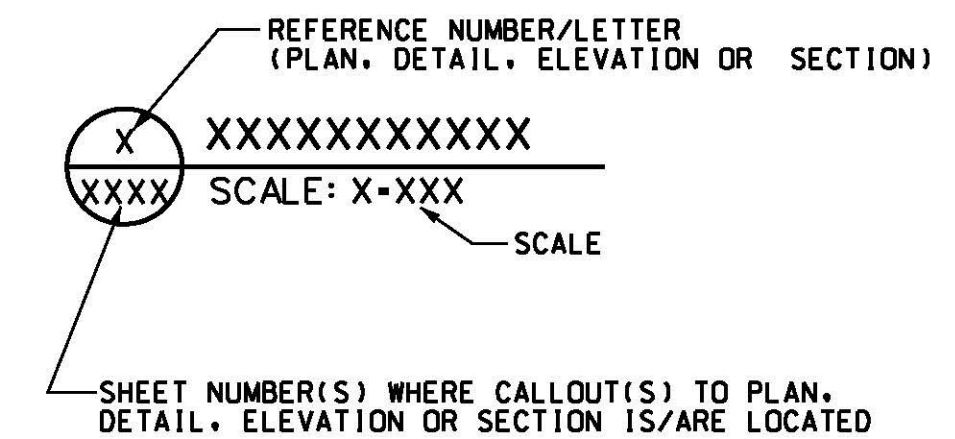
DRAWING NUMBER	DRAWING TITLE
GENERAL DRAWINGS	
RUT-NEZ120015-G001	COVER SHEET
RUT-NEZ120015-G002	INDEX SHEET
RUT-NEZ120015-G003	GENERAL NOTES
RUNWAY 19 MALSR	
RUT-NEZ120015-C001	FACILITY SITE PLAN
RUT-NEZ120015-C002	MISCELLANEOUS DETAILS
RUT-NEZ120015-C003	GRAVEL ACCESS ROAD
RUT-NEZ120015-S001	FOUNDATION DESIGN - MG-20 LIR STRUCTURE STATION 2+00 AND 3+80
RUT-NEZ120015-S002	FOUNDATION DESIGN - MG-30 LIR STRUCTURE STATION 5+70
RUT-NEZ120015-Q001	EQUIPMENT INSTALLATION - STATION 2+00 AND 3+80
RUT-NEZ120015-Q002	EQUIPMENT INSTALLATION - STATION 5+70
RUT-NEZ120015-Q003	LOW IMPACT RESISTANT (LIR) STRUCTURES ASSEMBLY AND MOUNTING DETAILS
RUT-NEZ120015-E001	ELECTRICAL DETAILS
RUNWAY 19 VASI	
RUT-NEZ120016-C001	FACILITY SITE PLAN
RUT-NEZ120016-C002	MISCELLANEOUS DETAILS - SHEET 1 OF 2
RUT-NEZ120016-C003	MISCELLANEOUS DETAILS - SHEET 2 OF 2

ABBREVIATIONS

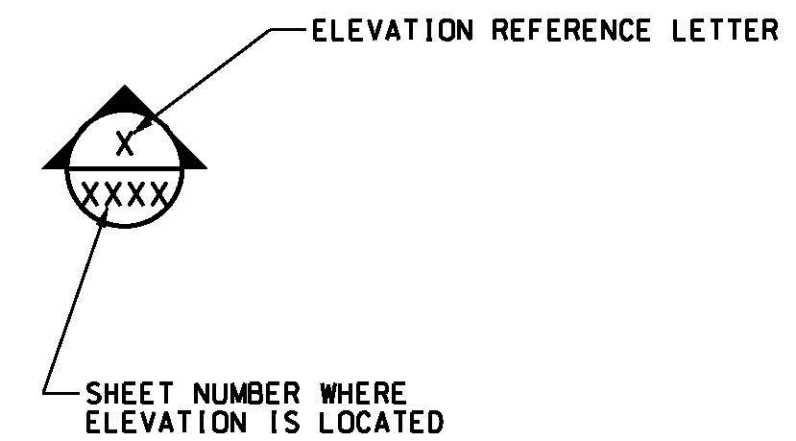
A	- AMP
A-C	- AIR TO GROUND
AGL	- ABOVE GROUND/GRADE LEVEL
ALS	- APPROACH LIGHT SYSTEM
ANI	- NAS IMPLEMENTATION (FAA)
ADA	- AIR OPERATIONS AREA
ARP	- AIRPORT REFERENCE POINT
ASOS	- AUTOMATED SURFACE OBSERVATION SYSTEM (NWS)
AT	- AIR TRAFFIC
AWG	- AMERICAN WIRE GAUGE
BCPS	- BATTERY CHARGING POWER SUPPLY (ILS/LCU)
BGL	- BELOW GROUND/GRADE LEVEL
BLD	- BUILDING
BSCU	- BARE SOLID COPPER
BTW	- BURLINGTON (VERMONT)
C	- CONTROL
CFW	- CENTERFIELD WIND
CKT	- CIRCUIT
CND	- CONDUIT (DUCT)
CO	- CONTRACTING OFFICER (FAA)
COTR	- CONTRACTING OFFICER'S TECHNICAL REPRESENTATIVE (FAA)
CW	- COURSE WIDTH (LOCALIZER)
DEB	- DIRECT EARTH BURIAL
DIA	- DIAMETER
DISC	- DISCONNECT
DME	- DISTANCE MEASURING EQUIPMENT
DME CO	- DME CORPORATION
DPU	- DATA PROCESSING UNIT
DU	- DISTRIBUTION UNIT
DWG	- DRAWING
ELT	- ELEVATION
EMT	- ELECTRIC METALLIC TUBING
EOR	- END OF RUNWAY
FAA	- FEDERAL AVIATION ADMINISTRATION
FBO	- FIXED BASE OPERATOR
FDN	- FOUNDATION
FOD	- FOREIGN OBJECT DEBRIS
FT	- FEET
GA	- GENERAL AVIATION
GALV	- GALVANIZED
GFCI	- GROUND FAULT CIRCUIT INTERRUPTER
G-G	- GROUND TO GROUND
GFM	- GOVERNMENT FURNISHED MATERIAL
GND	- GROUND
GRSC	- GALVANIZED RIGID STEEL CONDUIT
GS	- GLIDE SLOPE (ILS)
HZ	- HERTZ
ICC	- INDIVIDUAL CONTROL CABINET
ILS	- INSTRUMENT LANDING SYSTEM
IN	- INCH
INSUL	- INSULATED
KHZ	- KILOHERTZ
KV	- KILOVOLT
KVA	- KILOVOLT AMPERE
LCU	- LINK CONTROL UNIT (RMS/RMS)
LHA	- LAMP HOUSING ASSEMBLY (PAPI)
LIR	- LOW IMPACT RESISTANCE
LOCALIZER	- LOCALIZER (ILS)
LOM	- LOCATOR OUTER MARKER (NDB & OM)
MALS	- MEDIUM INTENSITY APPROACH LIGHTING SYSTEM
MALSF	- MALS WITH SEQUENCED FLASHERS
MALSR	- MALS WITH RUNWAY ALIGNMENT INDICATOR LIGHTS (MALS-RAIL)
MAX	- MAXIMUM
MG	- MAST-ON-GROUND (LIR)
MHZ	- MEGAHERTZ
MIN	- MINIMUM
MP	- MULTI-POINT (GROUND)
MS	- MAST-ON-STAND (LIR)
MSL	- MEAN SEA LEVEL
N	- NEUTRAL
N/A	- NOT APPLICABLE
NAS	- NATIONAL AIRSPACE SYSTEM
NDB	- NON-DIRECTIONAL BEACON
NEC	- NATIONAL ELECTRIC CODE
NOTAM	- NOTICE TO AIRMEN
NWS	- NATIONAL WEATHER SERVICE
OB	- OBSTRUCTION
OFA	- OBJECT FREE AREA
OM	- OUTER MARKER (ILS)
P	- POWER
PARSONS	- PARSONS CORPORATION (TSSC)
PAPI	- PRECISION APPROACH PATH INDICATOR
PCA	- POWER AND CONTROL ASSEMBLY
PCU	- POWER AND CONTROL UNIT
PNL	- PANEL
PR	- PAIR
PRIM	- PRIMARY
R/W	- RUNWAY
RAIL	- RUNWAY ALIGNMENT INDICATOR LIGHTS
RE	- RESIDENT ENGINEER (FAA/TSSC)
REL	- RUNWAY END IDENTIFIER LIGHTS
REL	- RUNWAY EDGE LIGHTS
REQ	- REQUIRED
RF	- RADIO FREQUENCY
RMM	- REMOTE MAINTENANCE MONITORING
RMMS	- REMOTE MAINTENANCE MONITORING SYSTEM
RMS	- REMOTE MONITORING SUBSYSTEM
RRCS	- REMOTE RADIO CONTROL SYSTEM
RSA	- RUNWAY SAFETY AREA
RT	- REMOTE TRANSMITTER
RUT	- RUTLAND - SOUTHERN VERMONT REGIONAL AIRPORT
SCH	- SCHEDULE
SEC	- SECONDARY
SMD	- SYSTEM MANAGEMENT OFFICE (FAA)
SP	- SINGLE-POINT (GROUND)
SPD	- SURGE PROTECTIVE DEVICE
SS	- STAINLESS STEEL
SSC	- SYSTEM SUPPORT CENTER (FAA)
STA	- STATION
T	- TELEPHONE
T/W	- TAXIWAY
TEL	- TAXIWAY EDGE LIGHTS
TELCO	- TELEPHONE COMPANY
TH	- THRESHOLD
TSA	- TAXIWAY SAFETY AREA
TSSC	- FAA TECHNICAL SUPPORT SERVICE CONTACT (PARSONS)
TYP	- TYPICAL
UPS	- UNINTERRUPTABLE POWER SOURCE/SUPPLY
V	- VOLT
VASI	- VISUAL APPROACH SLOPE INDICATOR
VHF	- VERY HIGH FREQUENCY
W	- WITH
WS	- WIND SOCK
XFRM	- TRANSFORMER
XMTR	- TRANSMITTER

SYMBOLS LEGEND

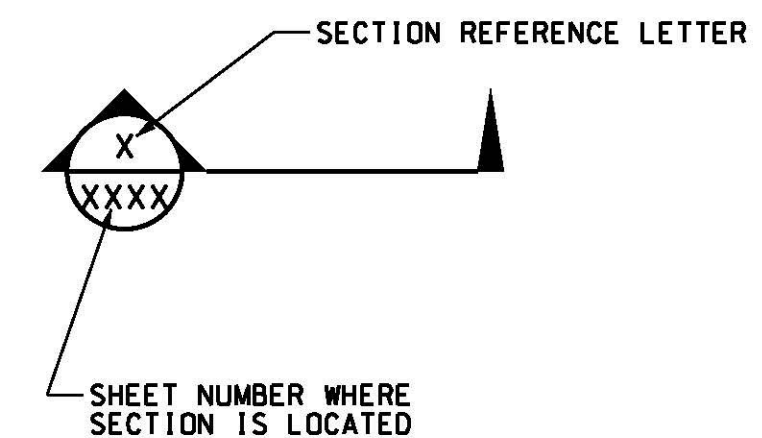
SUBTITLE REFERENCE



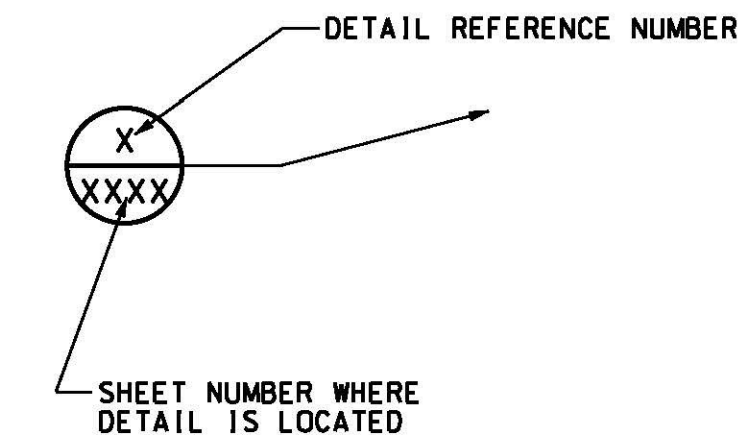
ELEVATION CALLOUT REFERENCE



SECTION CALLOUT REFERENCE



DETAIL CALLOUT REFERENCE



DRAWING PREFIXES

CXXX - CIVIL
 EXXX - ELECTRICAL/ELECTRONIC
 GXXX - GENERAL
 OXXX - EQUIPMENT
 SXXX - STRUCTURAL

REV	APPROVED DATE	DESCRIPTION	JCN	REDLINE DATE	APVD
	05/20/2013	CONSTRUCTION, WR *12507 (DG)	992395	10/02/2012	

DEPARTMENT OF TRANSPORTATION
 FEDERAL AVIATION ADMINISTRATION
 ATO - TECHNICAL OPERATIONS EASTERN SERVICE AREA

MALSR
 RUNWAY 19
 INDEX SHEET

REVIEWED BY	SUBMITTED BY	DATE	JCN	REV
		05/20/2013	992395	
PROJECT ENGINEER	MGR: CONSTRUCTION	ISSUED BY	ENGINEERING SERVICES	NAVAIDS
DESIGNED	DLW	DRAWN	DLW	CHECKED
RUTLAND		RUTLAND - SOUTHERN VERMONT REGIONAL AIRPORT		VT