

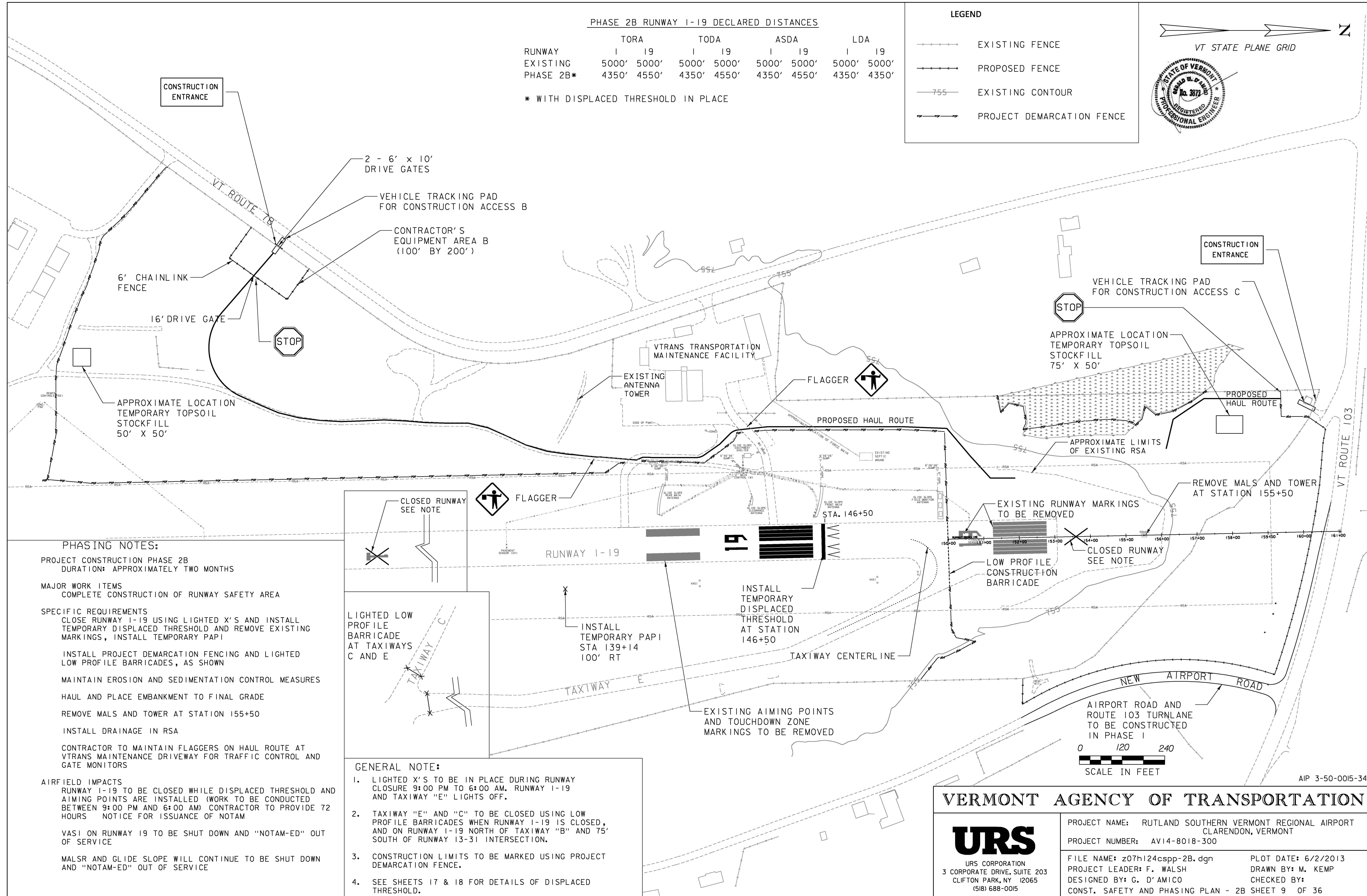
PHASE 2B RUNWAY 1-19 DECLARED DISTANCES

RUNWAY	TORA		TODA		ASDA		LDA	
	I	19	I	19	I	19	I	19
EXISTING	5000'	5000'	5000'	5000'	5000'	5000'	5000'	5000'
PHASE 2B*	4350'	4550'	4350'	4550'	4350'	4550'	4350'	4350'

* WITH DISPLACED THRESHOLD IN PLACE

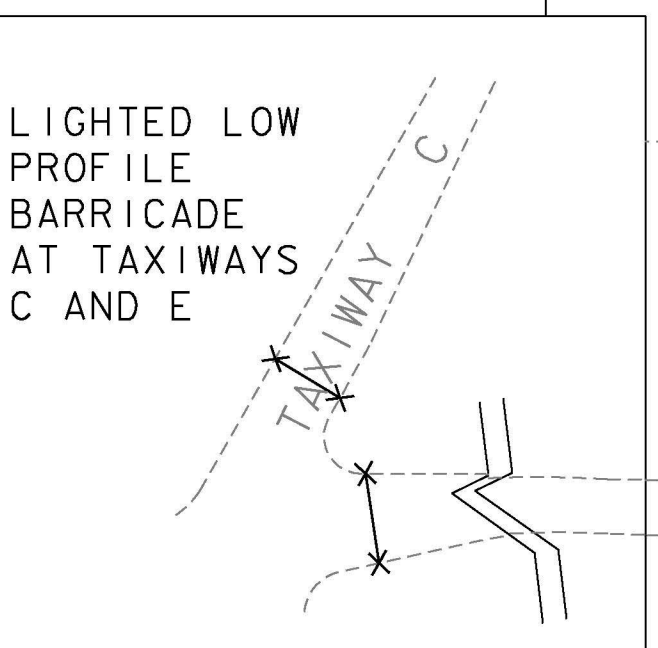
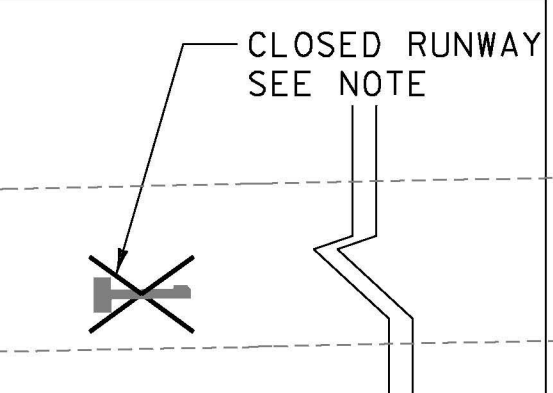
LEGEND

- EXISTING FENCE
- PROPOSED FENCE
- 755- EXISTING CONTOUR
- PROJECT DEMARCATION FENCE

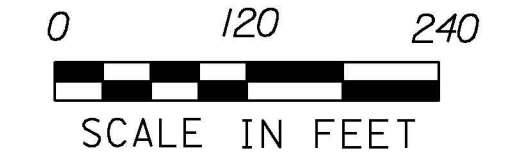


PHASING NOTES:

- PROJECT CONSTRUCTION PHASE 2B
DURATION: APPROXIMATELY TWO MONTHS
- MAJOR WORK ITEMS
COMPLETE CONSTRUCTION OF RUNWAY SAFETY AREA
- SPECIFIC REQUIREMENTS
CLOSE RUNWAY 1-19 USING LIGHTED X'S AND INSTALL TEMPORARY DISPLACED THRESHOLD AND REMOVE EXISTING MARKINGS, INSTALL TEMPORARY PAPI
- INSTALL PROJECT DEMARCATION FENCING AND LIGHTED LOW PROFILE BARRICADES, AS SHOWN
- MAINTAIN EROSION AND SEDIMENTATION CONTROL MEASURES
- HAUL AND PLACE EMBANKMENT TO FINAL GRADE
- REMOVE MALS AND TOWER AT STATION 155+50
- INSTALL DRAINAGE IN RSA
- CONTRACTOR TO MAINTAIN FLAGGERS ON HAUL ROUTE AT VTRANS MAINTENANCE DRIVEWAY FOR TRAFFIC CONTROL AND GATE MONITORS
- AIRFIELD IMPACTS
RUNWAY 1-19 TO BE CLOSED WHILE DISPLACED THRESHOLD AND AIMING POINTS ARE INSTALLED (WORK TO BE CONDUCTED BETWEEN 9:00 PM AND 6:00 AM) CONTRACTOR TO PROVIDE 72 HOURS NOTICE FOR ISSUANCE OF NOTAM
- VASI ON RUNWAY 19 TO BE SHUT DOWN AND "NOTAM-ED" OUT OF SERVICE
- MALS AND GLIDE SLOPE WILL CONTINUE TO BE SHUT DOWN AND "NOTAM-ED" OUT OF SERVICE



- GENERAL NOTE:
1. LIGHTED X'S TO BE IN PLACE DURING RUNWAY CLOSURE 9:00 PM TO 6:00 AM. RUNWAY 1-19 AND TAXIWAY "E" LIGHTS OFF.
 2. TAXIWAY "E" AND "C" TO BE CLOSED USING LOW PROFILE BARRICADES WHEN RUNWAY 1-19 IS CLOSED, AND ON RUNWAY 1-19 NORTH OF TAXIWAY "B" AND 75' SOUTH OF RUNWAY 13-31 INTERSECTION.
 3. CONSTRUCTION LIMITS TO BE MARKED USING PROJECT DEMARCATION FENCE.
 4. SEE SHEETS 17 & 18 FOR DETAILS OF DISPLACED THRESHOLD.



AIP 3-50-0015-34

VERMONT AGENCY OF TRANSPORTATION



PROJECT NAME: RUTLAND SOUTHERN VERMONT REGIONAL AIRPORT
CLARENDON, VERMONT
PROJECT NUMBER: AV14-8018-300
FILE NAME: z07h124cspp-2B.dgn
PLOT DATE: 6/2/2013
PROJECT LEADER: F. WALSH
DRAWN BY: M. KEMP
DESIGNED BY: G. D'AMICO
CHECKED BY:
CONST. SAFETY AND PHASING PLAN - 2B SHEET 9 OF 36

6/2/2013 P:\CADD\Consultants\z07h124cspp-2B.dgn