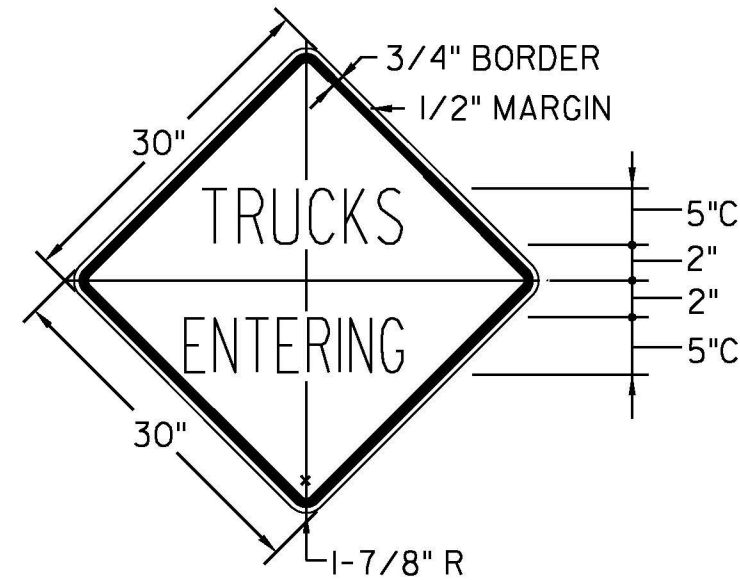


PROJECT DESCRIPTION

- (1) WIDEN & EXTEND RUNWAY SAFETY AREA (400' X 600')
- (2) REMOVE AND RE-INSTALL THREE MALS TOWERS AND LIGHTS
- (3) INSTALL TEMPORARY PAPI FOR RUNWAY 19

NOTES

- I. TRUCK ENTERING SIGNS TO BE PLACED ON ROUTE 103 AND ROUTE 7B APPROXIMATELY 150' AND 75' FROM THE CONTRACTOR'S ENTRANCE ONTO AIRPORT ROAD IN EACH DIRECTION. SIGNS TO BE PLACED AT LEAST 8' OFF THE EDGE OF PAVEMENT.



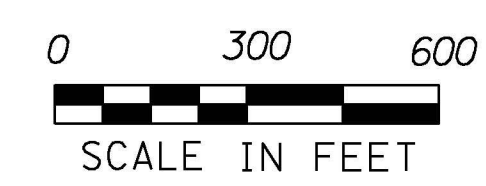
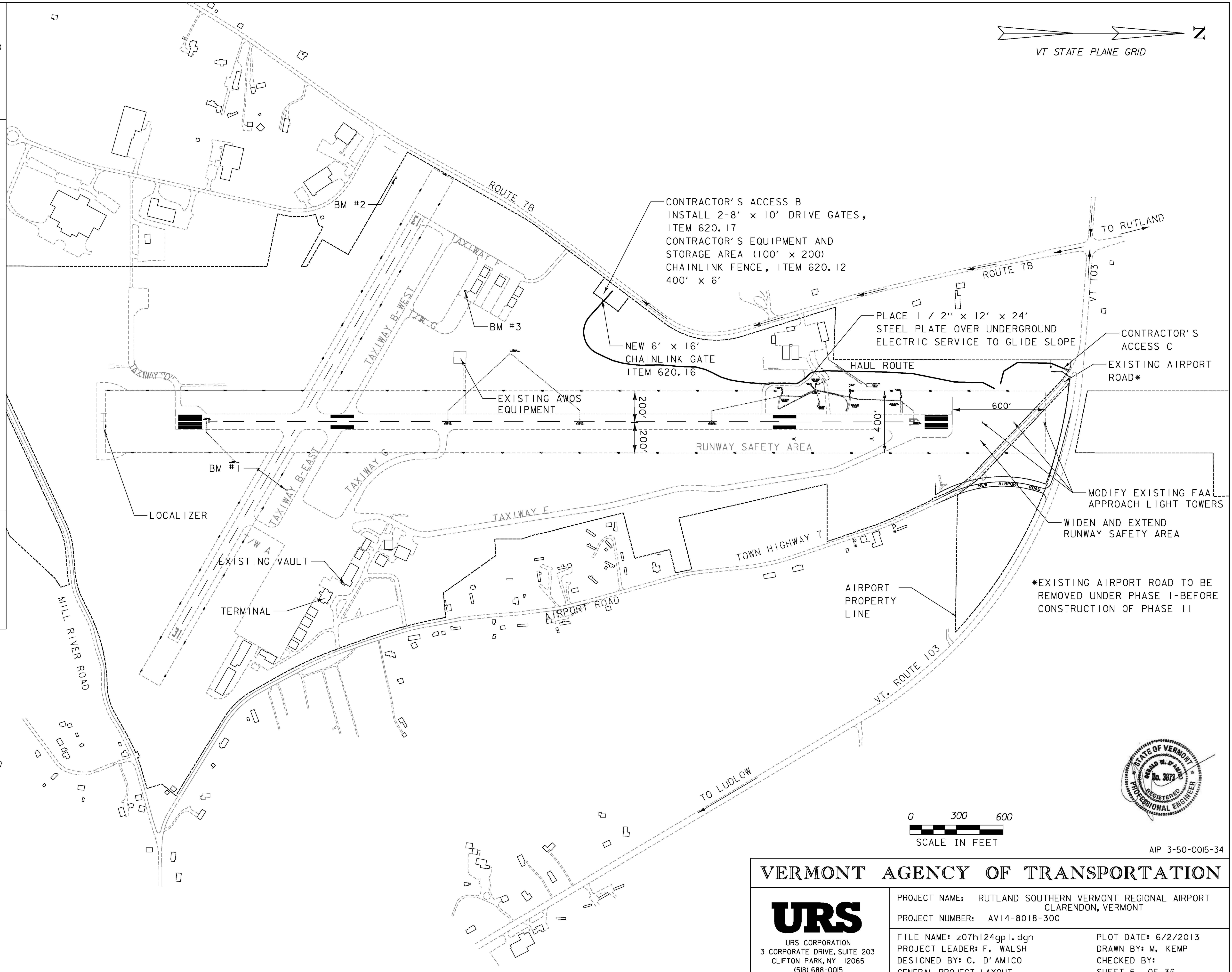
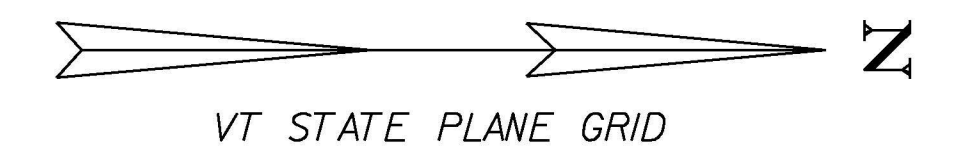
COLORS

TEXT & BORDER - BLACK (NON-REFLECT.)
BACKGROUND - YELLOW (REFLECT.)

E-121 STANDARD SIGN PLACEMENT
E-100 CONSTRUCTION APPROACH SIGNS


TRUCKS ENTERING
WARNING SIGN

- BENCHMARK #1 DISK 650M, 1979
374614.055N, 1521821.019E
ELEVATION 782.54
- BENCHMARK #2 DISK 1105, 1987
378552.173N, 1520976.989E
ELEVATION 773.79
- BENCHMARK #3 R.R. SPIKE IN PAVEMENT
375740.432N, 1520314.989E
ELEVATION 780.22



AIP 3-50-0015-34

VERMONT AGENCY OF TRANSPORTATION

 URS CORPORATION 3 CORPORATE DRIVE, SUITE 203 CLIFTON PARK, NY 12065 (518) 688-0015	PROJECT NAME: RUTLAND SOUTHERN VERMONT REGIONAL AIRPORT CLARENDON, VERMONT PROJECT NUMBER: AV14-8018-300
	FILE NAME: z07h124gp1.dgn PROJECT LEADER: F. WALSH DESIGNED BY: G. D'AMICO GENERAL PROJECT LAYOUT

PROJECT RECORD DRAWINGS

6/2/2013 P:\CADD\Consultants\z07h124gp1.dgn