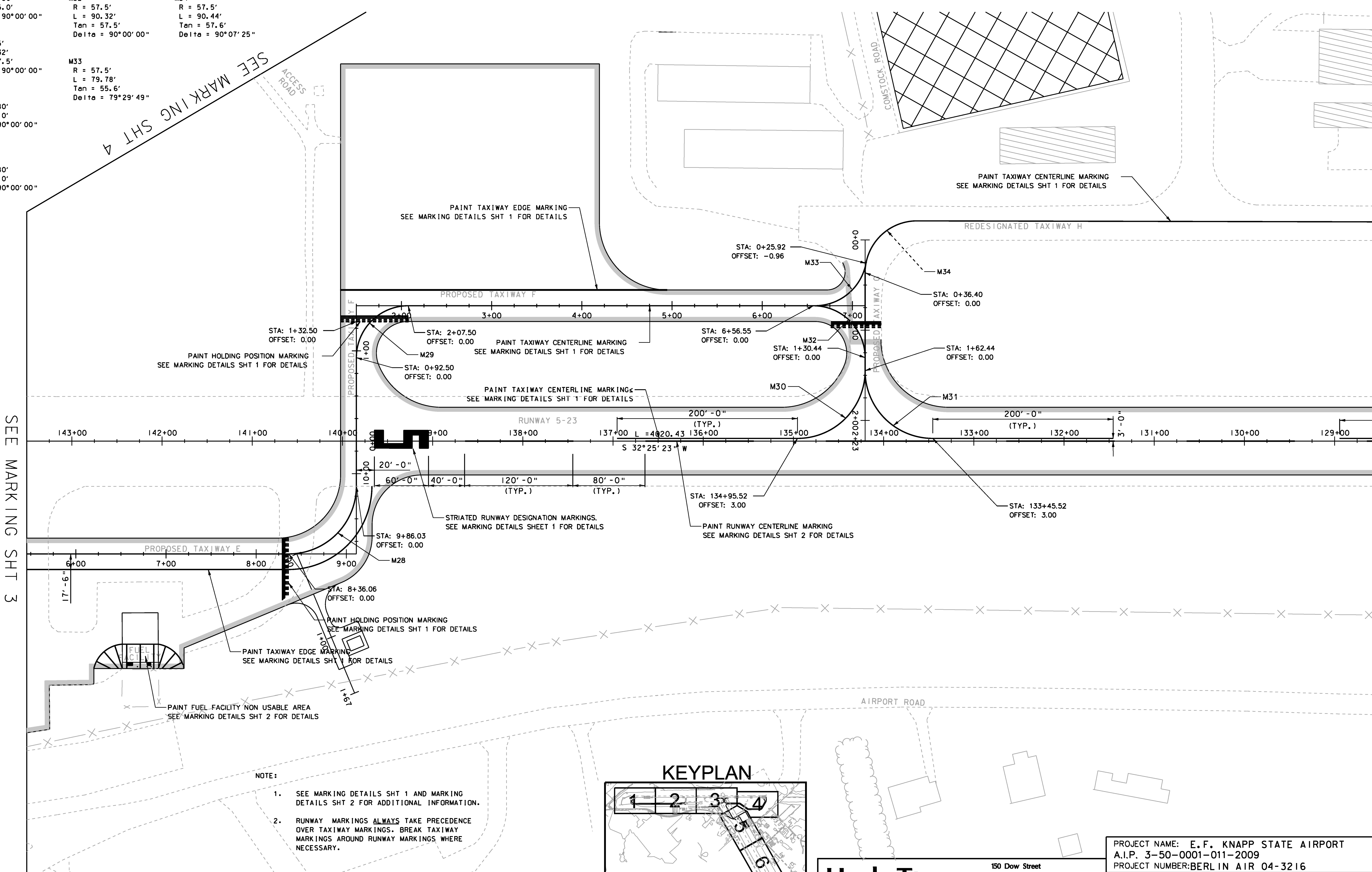


M28 MARKING DATA L = 117.80' Tan = 75.0' Delta = 90°00'00"	M32 R = 57.5' L = 90.32' Tan = 57.5' Delta = 90°00'00"	M34 R = 57.5' L = 90.44' Tan = 57.6' Delta = 90°07'25"
M29 R = 57.5' L = 90.32' Tan = 57.5' Delta = 90°00'00"	M33 R = 57.5' L = 79.78' Tan = 55.6' Delta = 79°29'49"	
M30 R = 75.0' L = 117.80' Tan = 75.0' Delta = 90°00'00"		
M31 R = 75.0' L = 117.80' Tan = 75.0' Delta = 90°00'00"		

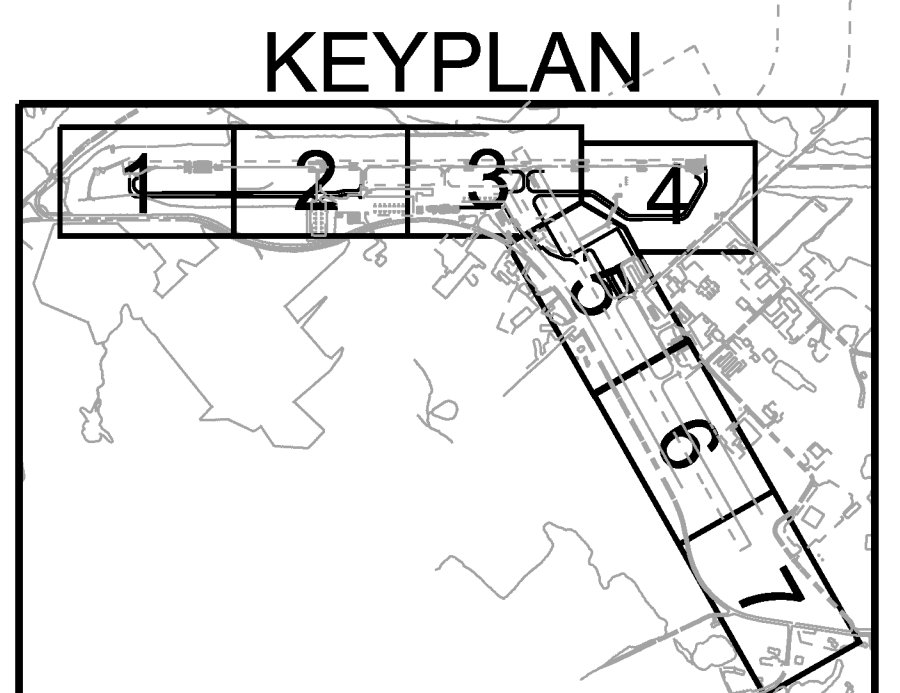
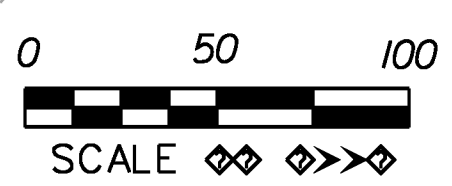


SEE MARKING SHT 3

SEE MARKING SHT 4

SEE MARKING SHT 6

- NOTE:**
- SEE MARKING DETAILS SHT 1 AND MARKING DETAILS SHT 2 FOR ADDITIONAL INFORMATION.
 - RUNWAY MARKINGS ALWAYS TAKE PRECEDENCE OVER TAXIWAY MARKINGS. BREAK TAXIWAY MARKINGS AROUND RUNWAY MARKINGS WHERE NECESSARY.



Hoyle, Tanner & Associates, Inc.
 150 Dow Street
 Manchester, NH 03101-1227
 Tel 603-669-5555
 Fax 603-669-4168
 Web Page: www.hoyletanner.com
Hoyle, Tanner & Associates © 2008

PROJECT NAME: E. F. KNAPP STATE AIRPORT	
A.I.P. 3-50-0001-011-2009	
PROJECT NUMBER: BERLIN AIR 04-3216	
FILE NAME: z05h378sht.mrk.dgn	PLOT DATE: 11/22/2011
PROJECT LEADER: S. FORTNEY	DRAWN BY: D. STANDISH
DESIGNED BY: S. BOUCHARD	CHECKED BY: J. DOWNAR
MARKING SHT 5	SHEET 114 OF 173