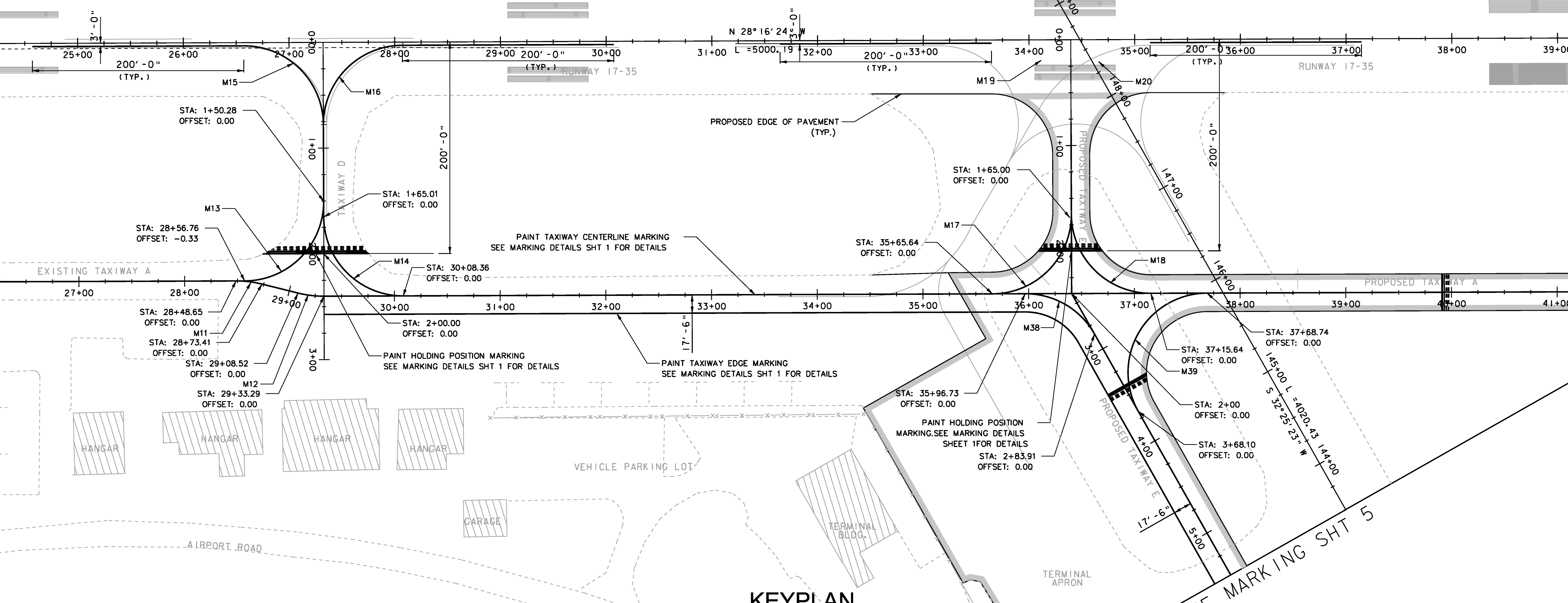


MARKING DATA

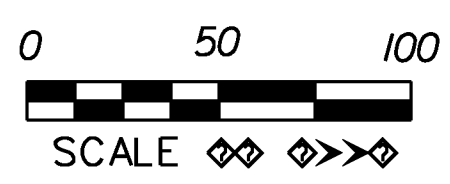
M11 R = 100.0' L = 24.77' Tan = 12.4' Delta = 14°11'24"	M14 R = 75.0' L = 117.79' Tan = 75.0' Delta = 89°59'30"	M17 R = 75.0' L = 117.80' Tan = 75.0' Delta = 90°00'00"	M20 R = 57.5' L = 90.32' Tan = 57.5' Delta = 90°00'00"
M12 R = 100.0' L = 24.77' Tan = 12.4' Delta = 14°11'24"	M15 R = 75.0' L = 117.80' Tan = 75.0' Delta = 89°59'30"	M18 R = 75.0' L = 117.80' Tan = 75.0' Delta = 90°00'00"	M38 R = 75.0' L = 79.45' Tan = 43.91' Delta = 60°41'47"
M13 R = 75.0' L = 117.82' Tan = 75.0' Delta = 90°00'30"	M16 R = 75.0' L = 117.82' Tan = 75.0' Delta = 90°00'30"	M19 R = 57.5' L = 90.32' Tan = 57.5' Delta = 90°00'00"	M39 R = 75.0' L = 156.17' Tan = 128.1' Delta = 119°18'13"

SEE MARKING SHT 2

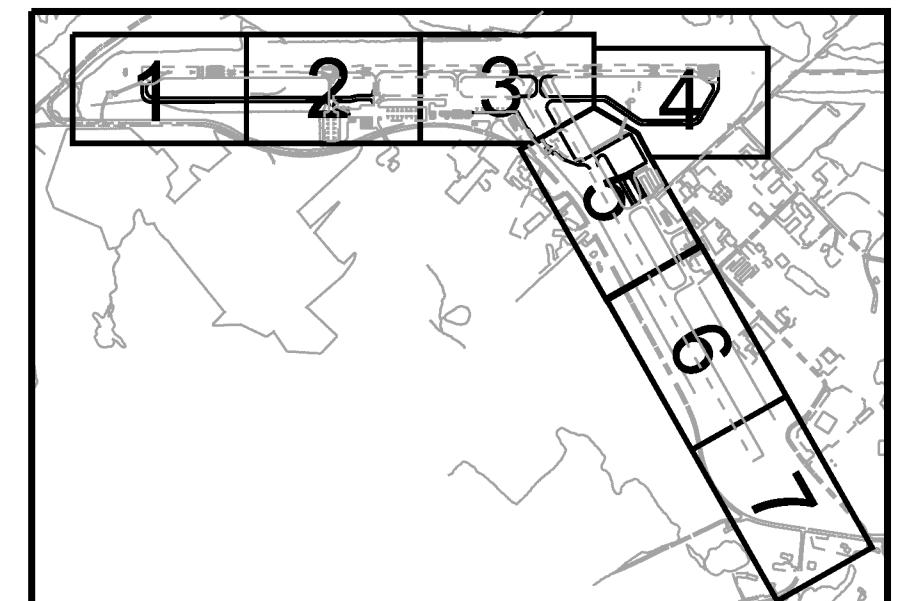


SEE MARKING SHT 4

- NOTE:**
- SEE MARKING DETAILS SHT 1 AND MARKING DETAILS SHT 2 FOR ADDITIONAL INFORMATION.
 - RUNWAY MARKINGS ALWAYS TAKE PRECEDENCE OVER TAXIWAY MARKINGS. BREAK TAXIWAY MARKINGS AROUND RUNWAY MARKINGS WHERE NECESSARY.



KEYPLAN



Hoyle, Tanner & Associates, Inc.
 150 Dow Street
 Manchester, NH 03101-1227
 Tel 603-669-5555
 Fax 603-669-4168
 Web Page: www.hoyletanner.com
Hoyle Tanner & Associates © 2008

PROJECT NAME: E. F. KNAPP STATE AIRPORT	
A.I.P. 3-50-0001-011-2009	
PROJECT NUMBER: BERLIN AIR 04-3216	
FILE NAME: z05h378sh1.mrk.dgn	PLOT DATE: 11/22/2011
PROJECT LEADER: S. FORTNEY	DRAWN BY: D. STANDISH
DESIGNED BY: S. BOUCHARD	CHECKED BY: J. DOWNAR
MARKING SHT 3	SHEET 112 OF 173