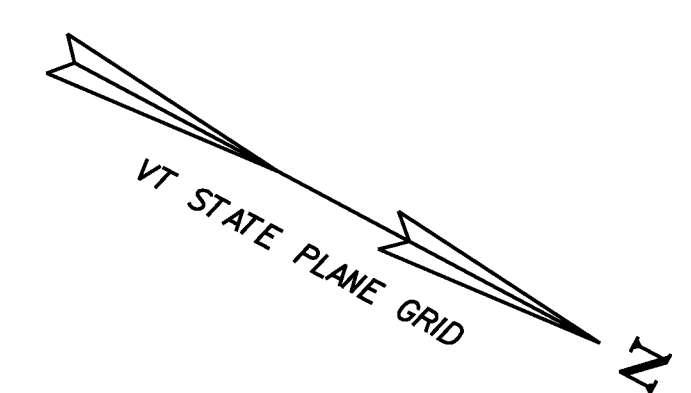


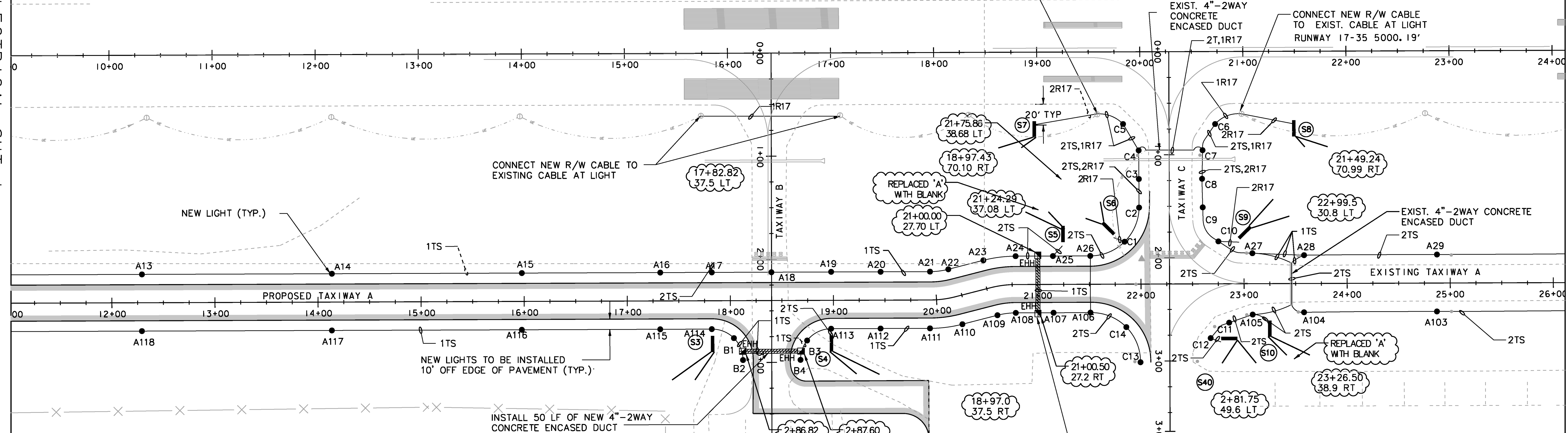
LEGEND:

- NEW SIGN
- A8 NEW TAXIWAY EDGE LIGHT WITH BLUE LENS
- ○ — EXISTING RUNWAY LIGHT
- R5-18 NEW RUNWAY LIGHT ON R5 CIRCUIT
- (R/G) HALF RED LENS/HALF GREEN LENS
- (W/W) WHITE LENS BOTH SIDES
- EHH EHH CONCRETE ENCASED DUCT WITH ELECTRIC HAND HOLES
- 1TS ONE NEW 1/C, #8, 5KV, L-824 TYPE C CABLE, DIRECT BURIED IN TURF
- TN TAXIWAY NORTH CIRCUIT
- TS TAXIWAY SOUTH CIRCUIT
- TE TAXIWAY EAST CIRCUIT
- R17 RUNWAY 17-35 CIRCUIT
- R5 RUNWAY 5-23 CIRCUIT

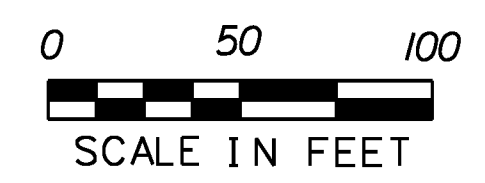
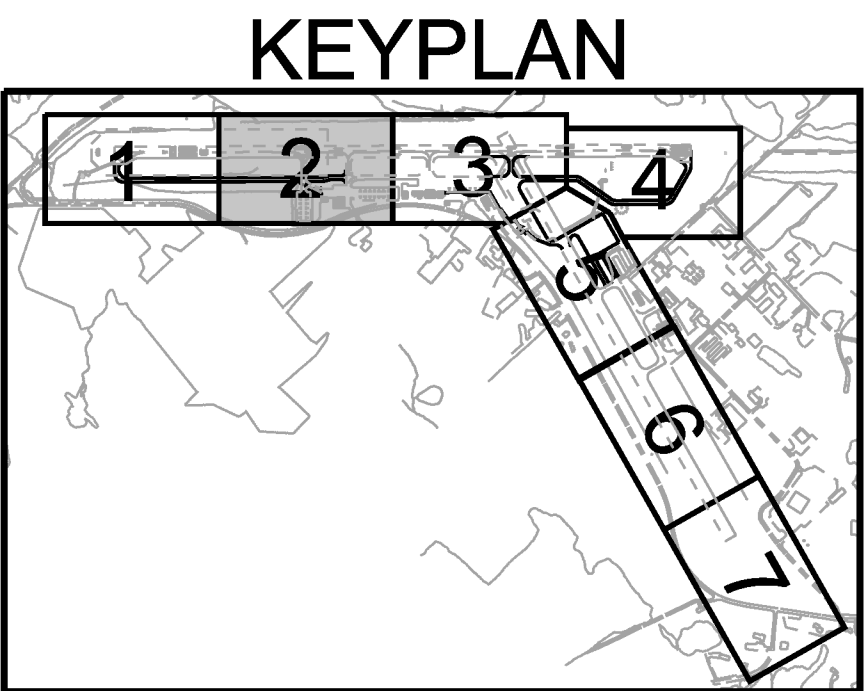


SEE ELECTRICAL SHT 1

SEE ELECTRICAL SHT 3



LIGHT NO.	STATION	OFFSET	CIRCUIT	LIGHT NO.	STATION	OFFSET	CIRCUIT
A13	STA: 12+29.00	OFFSET: -27.50	TS	A29	STA: 24+86.30	10' OFF EXIST. PVM'T	TS
A14	STA: 14+14.07	OFFSET: -27.50	TS	A103	STA: 24+87.69	10' OFF EXIST. PVM'T	TS
A15	STA: 15+96.99	OFFSET: -27.50	TS	A104	STA: 24+58.10	10' OFF EXIST. PVM'T	TS
A16	STA: 17+31.99	OFFSET: -27.50	TS	A105	STA: 23+08.20	10' OFF EXIST. PVM'T	TS
A17	STA: 17+81.43	OFFSET: -27.50	TS	C11	STA: 24+81.85	10' OFF EXIST. PVM'T	TS
A18	STA: 18+40.20	OFFSET: -27.50	TS	C12	STA: 24+78.74	10' OFF EXIST. PVM'T	TS
A19	STA: 18+98.20	OFFSET: -27.50	TS	C13	STA: 24+79.66	OFFSET: 28.19	TS
A20	STA: 19+45.53	OFFSET: -27.50	TS	C14	STA: 24+58.00	OFFSET: 35.36	TS
A21	STA: 19+91.29	OFFSET: -27.50	TS	A106	STA: 21+50.60	OFFSET: 27.50	TS
A22	STA: 20+20.37	OFFSET: -27.50	TS	A107	STA: 21+24.30	OFFSET: 27.50	TS
A23	STA: 20+55.79	OFFSET: -27.50	TS	A108	STA: 20+80.80	OFFSET: 27.50	TS
A24	STA: 20+76.95	OFFSET: -27.50	TS	A109	STA: 20+51.40	OFFSET: 27.50	TS
A25	STA: 21+21.78	OFFSET: -27.50	TS	A110	STA: 20+17.49	OFFSET: 27.50	TS
A26	STA: 21+50.28	OFFSET: -27.50	TS	A111	STA: 19+95.50	OFFSET: 27.50	TS
C1	STA: 17+83.60	OFFSET: 43.51	TS	A112	STA: 19+46.60	OFFSET: 27.50	TS
C2	STA: 17+51.20	OFFSET: 29.32	TS	A113	STA: 18+98.70	OFFSET: 27.50	TS
C3	STA: 17+23.50	10' OFF EXIST. PVM'T	TS	B3	STA: 24+77.64	OFFSET: -34.34	TS
C4	STA: 0+96.52	10' OFF EXIST. PVM'T	TS	B4	STA: 24+98.17	OFFSET: -27.89	TS
C5	STA: 0+89.02	10' OFF EXIST. PVM'T	TS	B2	STA: 24+97.00	OFFSET: 27.50	TS
C6	STA: 0+70.80	10' OFF EXIST. PVM'T	TS	B1	STA: 24+76.37	OFFSET: 36.66	TS
C7	STA: 0+94.99	10' OFF EXIST. PVM'T	TS	A114	STA: 17+82.82	OFFSET: 27.50	TS
C8	STA: 1+23.20	10' OFF EXIST. PVM'T	TS	A115	STA: 17+32.00	OFFSET: 27.50	TS
C9	STA: 1+50.82	10' OFF EXIST. PVM'T	TS	A116	STA: 15+98.30	OFFSET: 27.50	TS
C10	STA: 1+84.55	10' OFF EXIST. PVM'T	TS	A117	STA: 14+13.35	OFFSET: 27.50	TS
A27	STA: 23+08.62	10' OFF EXIST. PVM'T	TS	A118	STA: 12+29.10	OFFSET: 27.50	TS
A28	STA: 23+58.00	10' OFF EXIST. PVM'T	TS				



- NOTE:
1. PROPOSED GEOMETRY SHOWN FOR GUIDANCE ONLY. SEE GEOMETRY SHEETS 1-7.
 2. ALL CABLES ARE DIRECT BURIED UNLESS OTHERWISE NOTED.

Hoyle, Tanner & Associates, Inc.
 150 Dow Street
 Manchester, NH 03101-1227
 Tel 603-669-5555
 Fax 603-669-4168
 Web Page: www.hoyletanner.com
Hoyle, Tanner & Associates © 2008

PROJECT NAME: E. F. KNAPP STATE AIRPORT
 A.I.P. 3-50-0001-011-2009
 PROJECT NUMBER: BERLIN AIR 04-3216
 FILE NAME: z05h378sh1.e1.dgn
 PROJECT LEADER: S. FORTNEY
 DESIGNED BY: S. BOUCHARD
 ELECTRICAL SHT 2
 PLOT DATE: 11/22/2011
 DRAWN BY: D. STANDISH
 CHECKED BY: J. DOWNAR
 SHEET 98 OF 173