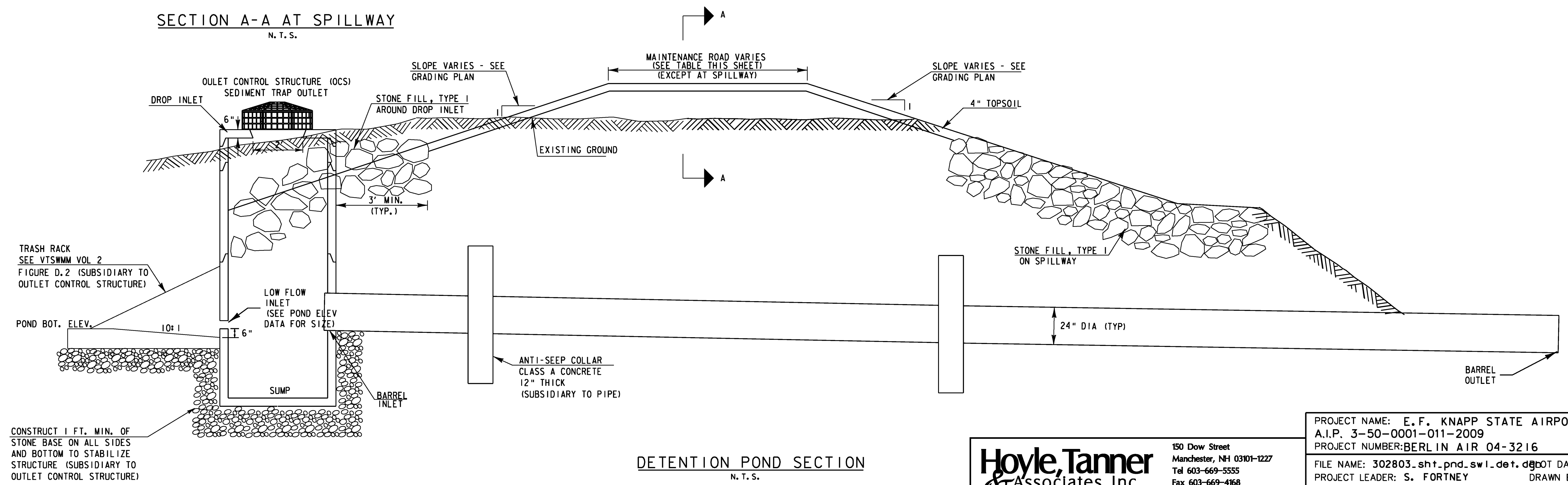
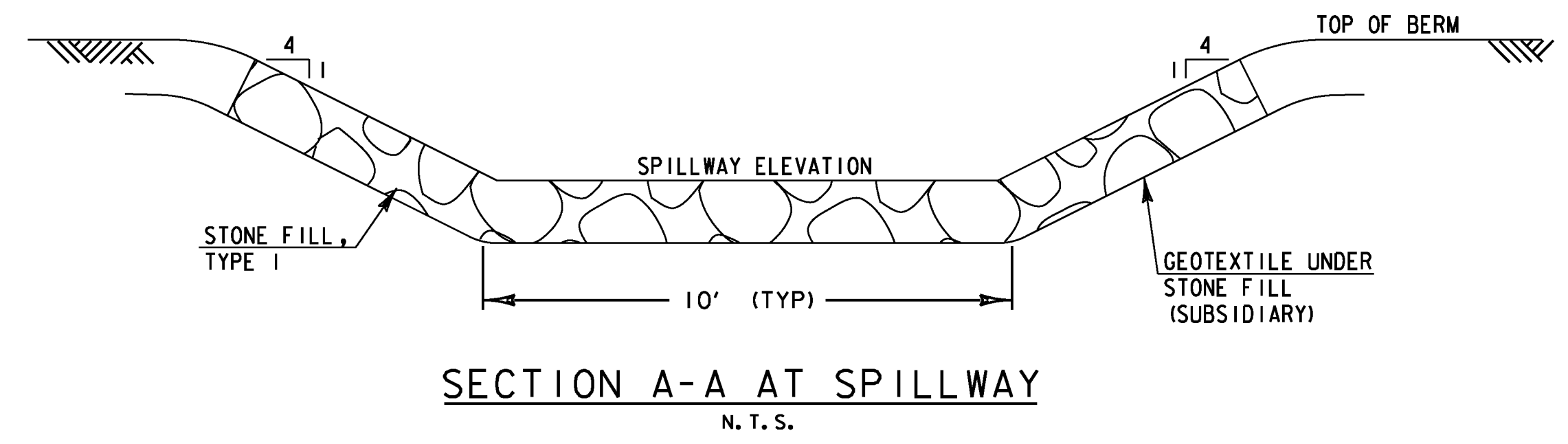


- GENERAL NOTES:**
1. THE DETENTION POND AREA SHALL BE CLEARED OF ALL TREES, ROOTS, STUMPS, BOULDERS AND SOD TO A DEPTH OF 2' BELOW FINAL GRADE.
 2. CONSTRUCT BERM USING EMBANKMENT MATERIAL FREE OF SOD, ROOTS, FROZEN MATERIAL, LARGE ROCKS, OR OTHER OBJECTIONABLE MATERIAL.
 3. CONSTRUCT CUT OFF TRENCH AT CENTERLINE OF BERM OR SLIGHTLY UPSTREAM. FILL WITH IMPERVIOUS BORROW TO REDUCE SEEPAGE AND STABILIZE THE BERM. COMPACT MATERIAL TO AT LEAST 95% OF MAXIMUM DENSITY.
 4. OUTLET CONTROL STRUCTURE SEDIMENT TRAP OUTLET TO BE PRECAST WITH HOLE SIZES AND SPACING AS SHOWN WITH ANY FIELD ADJUSTMENTS APPROVED BY THE CONTRACT ADMINISTRATOR. INLET HOLES MAY BE CORE DRILLED OR CAST WITH THE SECTION AT REQUIRED LOCATIONS. OTHER HOLES SHALL BE CAST WITH THE SECTION TO AVOID POSSIBLE RUST STAINS FROM EXPOSED REINFORCEMENT.
 5. TOPSOIL AND SEED ALL EARTH SLOPES AS SOON AS POSSIBLE. STABILIZE THE INLET AREA WITH REQUIRED EROSION CONTROL.
 6. REMOVE ACCUMULATED SEDIMENT FROM DETENTION POND AT COMPLETION OF PROJECT.
 7. ANTI-SEEP COLLARS SHALL BE INSTALLED AS SHOWN TO RESIST FLOW ALONG THE OUTSIDE OF THE PIPE. COLLARS SHOULD PROTECT A MINIMUM OF 2 FEET FROM THE PIPE. MAXIMUM SPACING OF COLLARS IS 20 FEET.

**DETENTION POND
OUTLET CONTROL STRUCTURE (OCS)
(FRONT VIEW)
N. T. S.**

POND ELEVATION DATA		
DESCRIPTION	POND 1	POND 2
POND BOTTOM ELEV	1079.0	1105.0
POND LOW FLOW SIZE/ELEV	4" / 1079.0	3" / 1105.0
RISER GRATE ELEV	1084.0	1108.0
BARREL INLET ELEV	1078.0	1104.9
SPILLWAY ELEV.	1085.0	1111.0
TOP OF BERM	1085.5	1111.5
BARREL OUTLET ELEV	1076.5	1102.3
MAINTENANCE ROAD WIDTH	10'	15'



Hoyle, Tanner & Associates, Inc.

150 Dow Street
Manchester, NH 03101-1227
Tel 603-669-5555
Fax 603-669-4168
Web Page: www.hoyletanner.com
Hoyle Tanner & Associates © 2008

PROJECT NAME: E. F. KNAPP STATE AIRPORT
A.I.P. 3-50-0001-011-2009
PROJECT NUMBER: BERLIN AIR 04-3216

FILE NAME: 302803_sht_pnd_sw1_det.dwg DATE: 11/22/2011
PROJECT LEADER: S. FORTNEY DRAWN BY: D. STANDISH
DESIGNED BY: S. BOUCHARD CHECKED BY: J. DOWNAR
POND SWALE DETAILS SHT 1 SHEET 95 OF 173