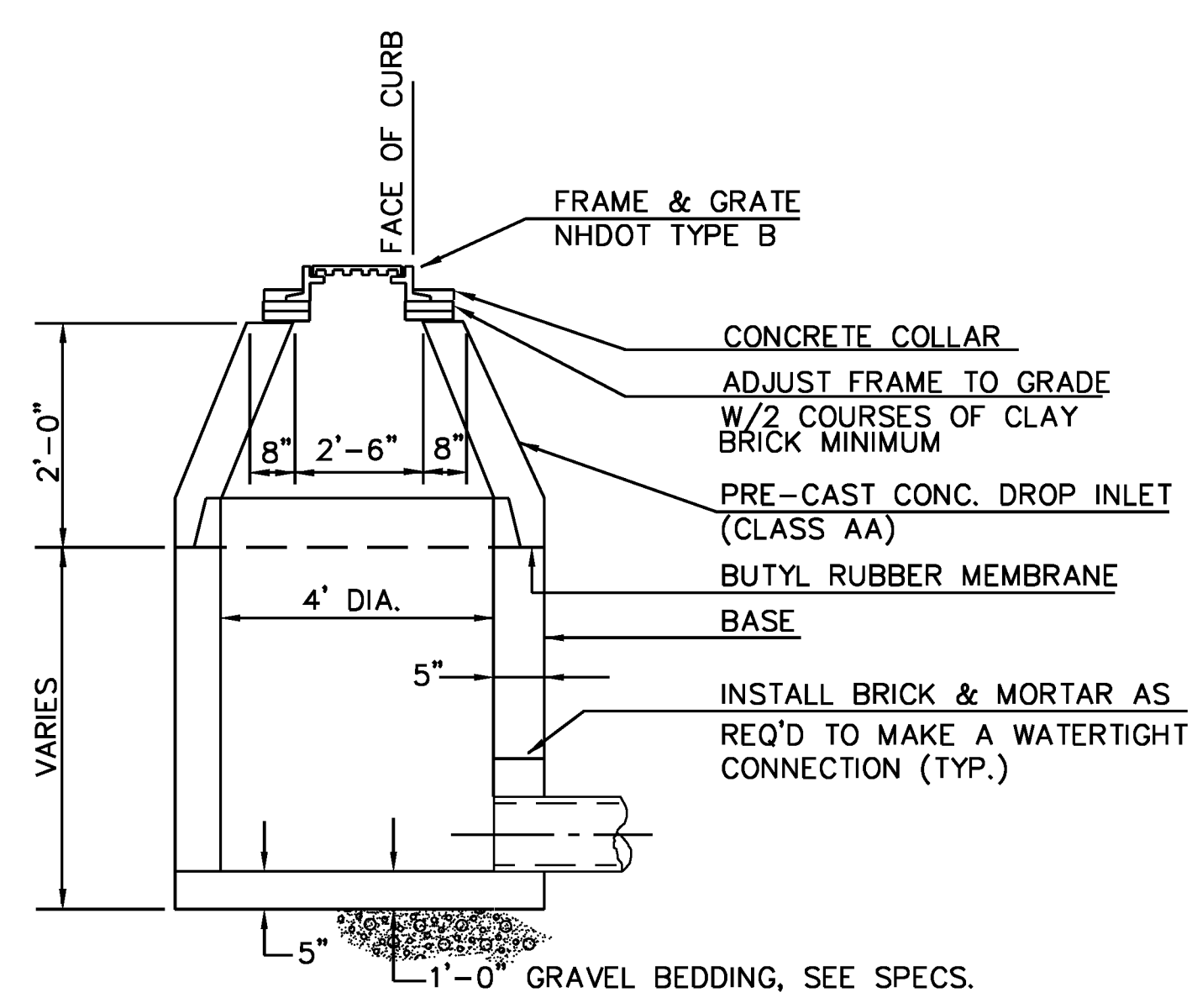


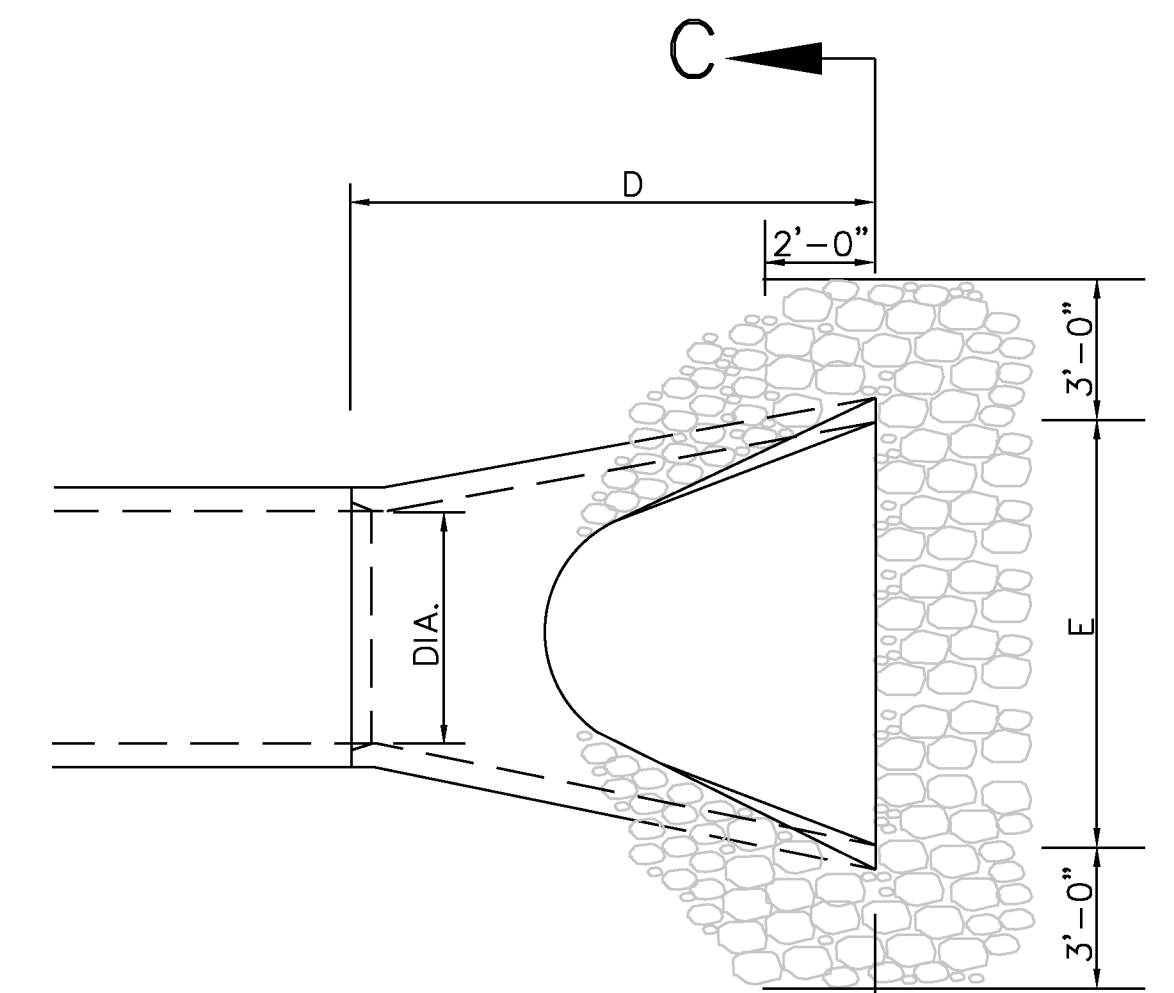
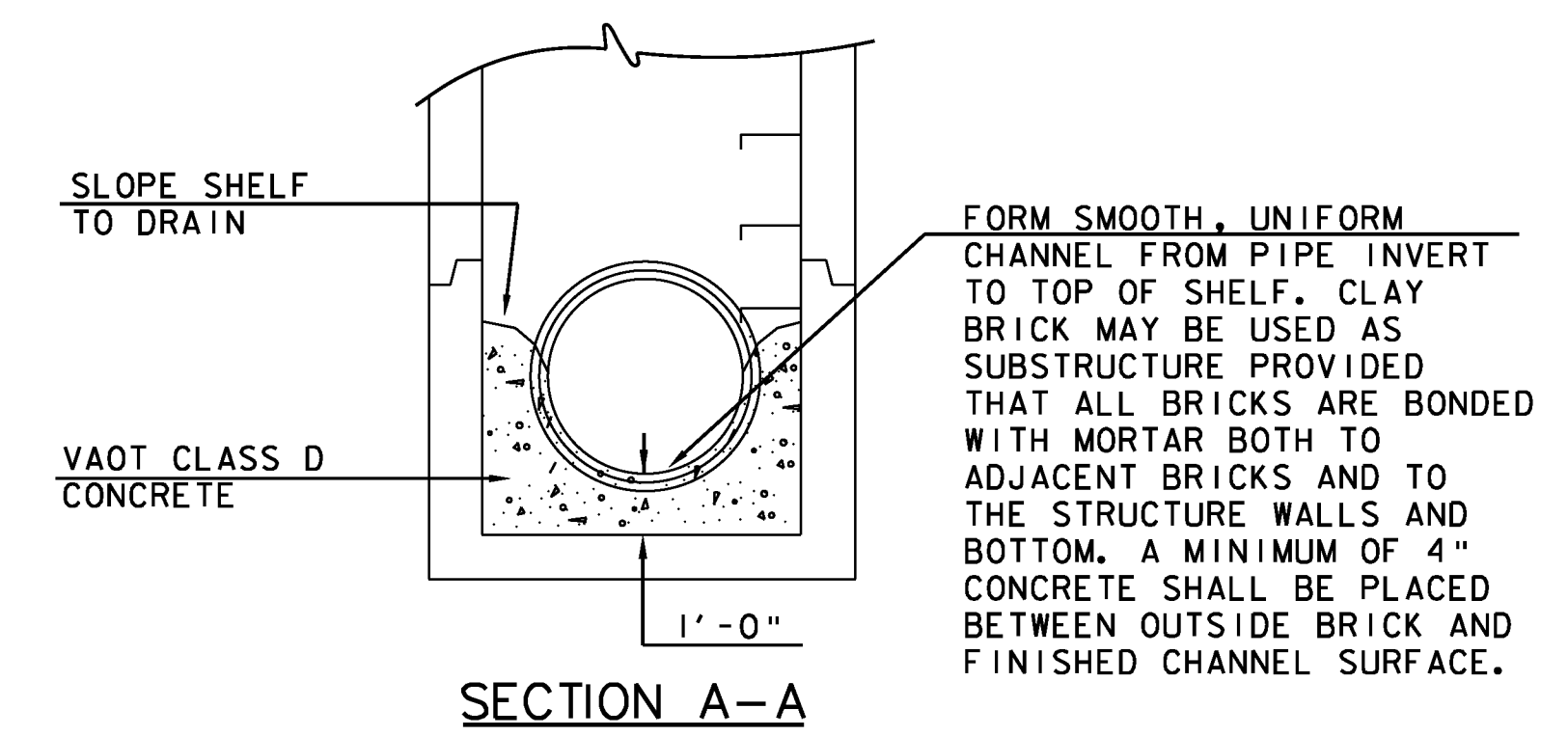
TYPICAL CATCH BASIN DETAIL

NOT TO SCALE



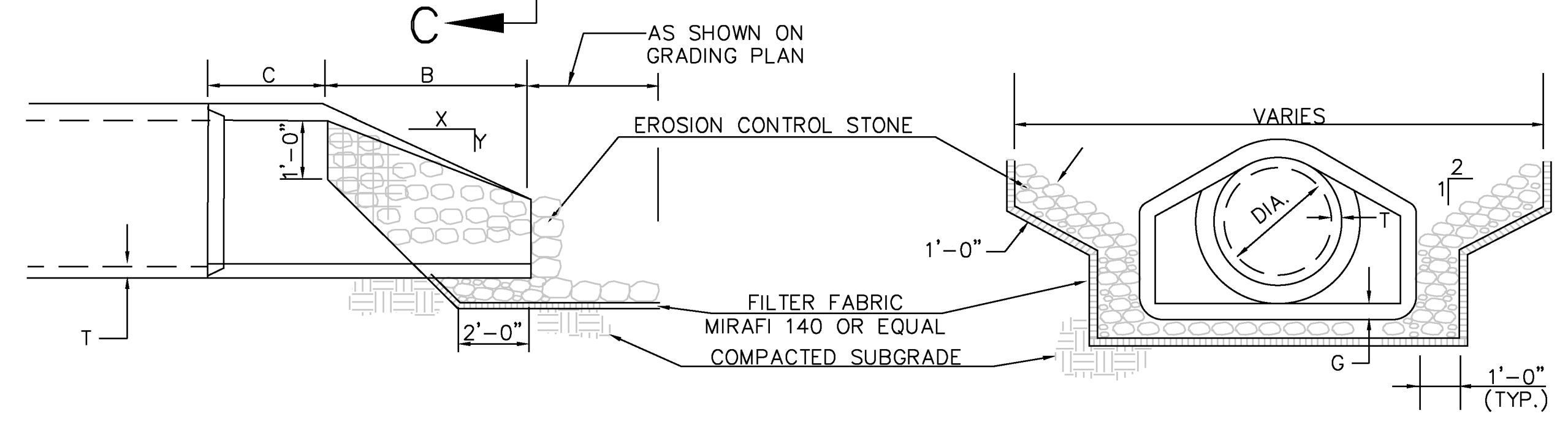
THE CONTRACTOR SHALL SUBMIT MANUFACTURER'S SHOP DRAWINGS INCLUDING REINFORCING DETAILS & CERTIFICATION OF HS-20 LOADING CAPACITY TO ENGINEER FOR APPROVAL.

NOT TO SCALE



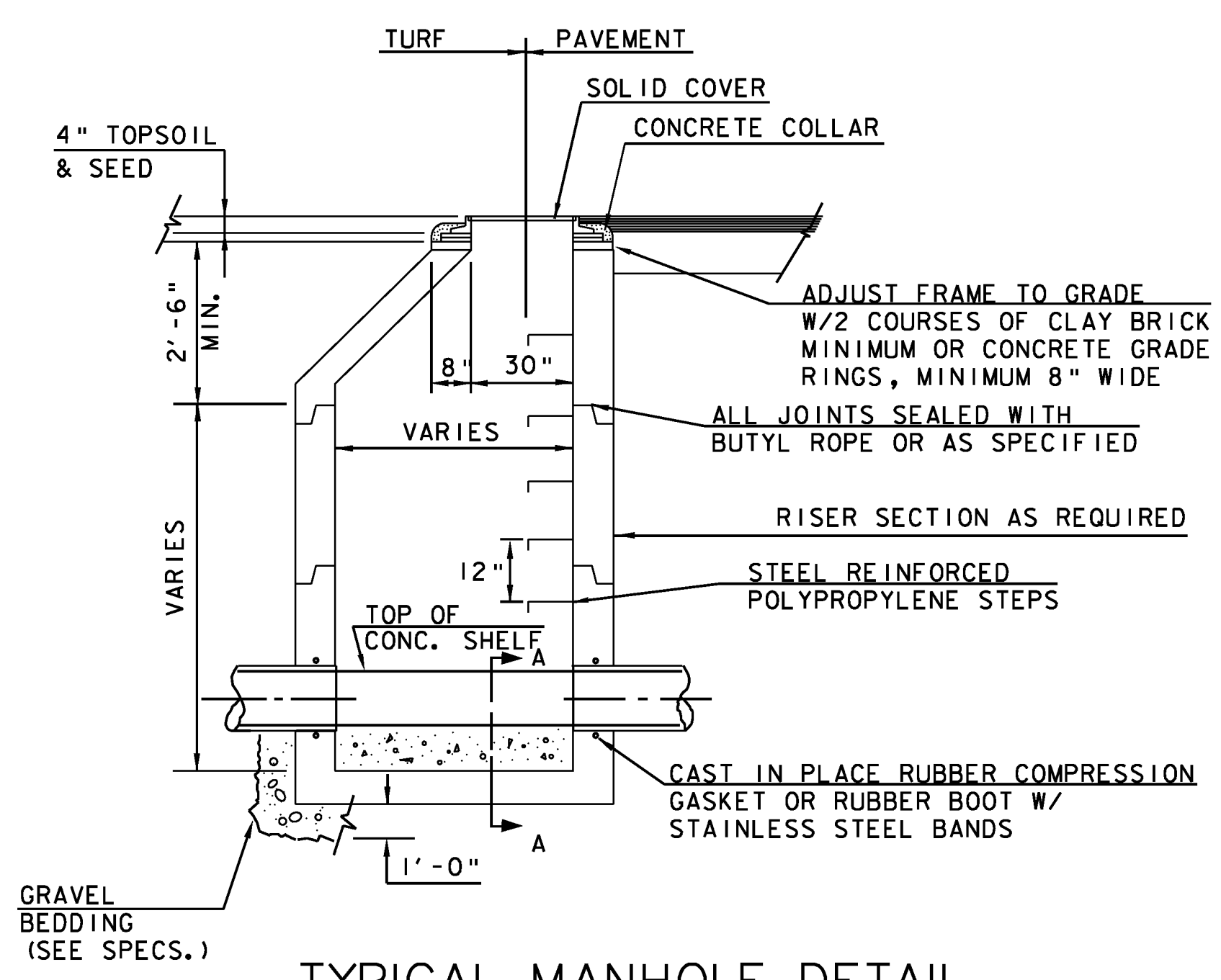
DIA.	WEIGHT PER SECTION	APPRX. SLOPE X TO Y	T	A	B	C	D	E	G
15"	740	3:1	2 1/2"	6"	27"	46"	73"	30"	2 1/2"
18"	990	3:1	2 1/2"	9"	27"	46"	73"	36"	2 1/2"
24"	1520	3:1	3"	9 1/2"	43 1/2"	30"	73 1/2"	48"	3"
			3 1/2"	12"	54"	19 1/2"	73 1/2"	60"	3 1/2"
36"	4100	3:1	4"	15"	63"	34 1/2"	97 1/2"	72"	4"

NOTE: PROVIDE GROOVED END ON OUTLET END SECTION, AND TONGUE END ON INLET END SECTION.

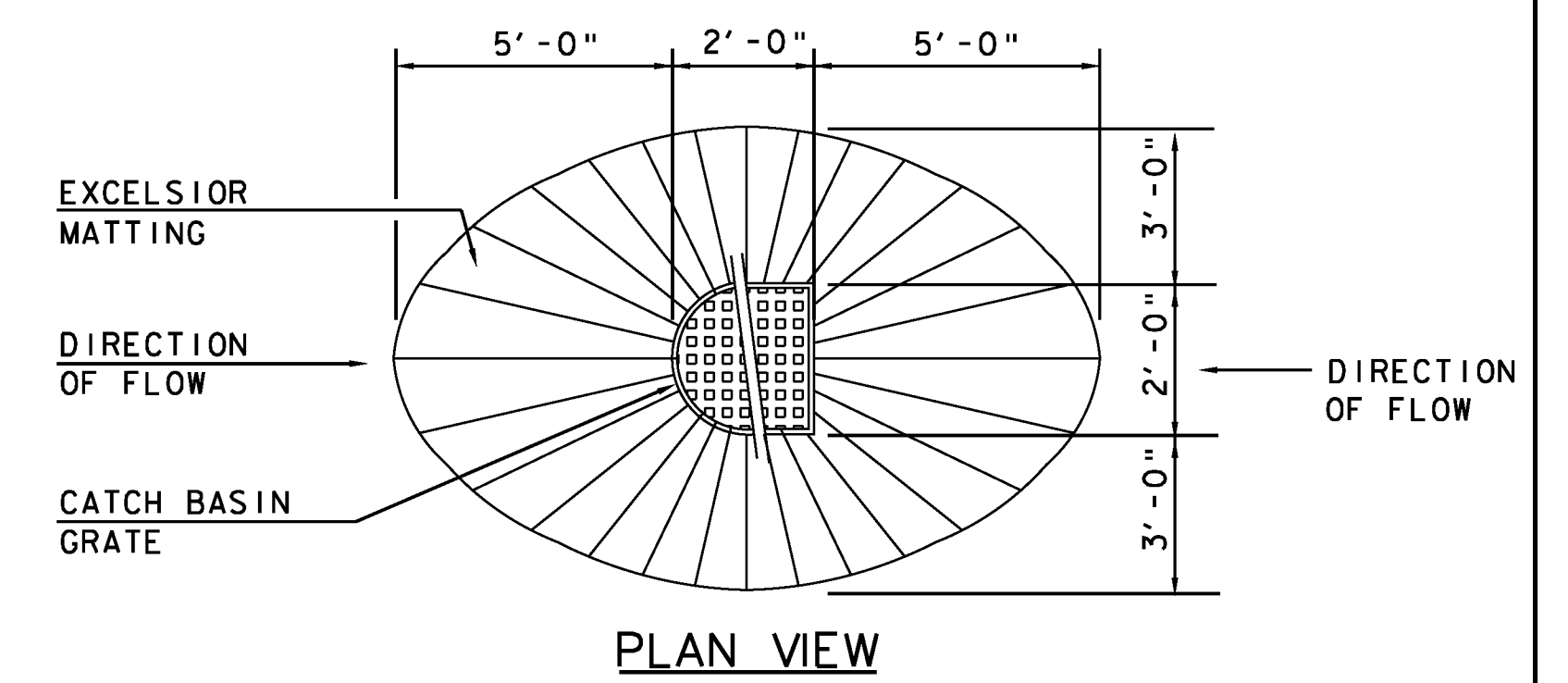


CONCRETE FLARED END SECTION DETAIL

NOT TO SCALE



NOT TO SCALE



CATCH BASIN GRADING DETAIL

NOT TO SCALE

Hoyle, Tanner & Associates, Inc.
 150 Dow Street
 Manchester, NH 03101-1227
 Tel 603-669-5555
 Fax 603-669-4168
 Web Page: www.hoyletanner.com
 Hoyle, Tanner & Associates © 2008

PROJECT NAME: E. F. KNAPP STATE AIRPORT
 A.I.P. 3-50-0001-011-2009
 PROJECT NUMBER: BERLIN AIR 04-3216
 FILE NAME: 302803_sht_grdg_det.dgn PLOT DATE: 11/22/2011
 PROJECT LEADER: S. FORTNEY DRAWN BY: D. STANDISH
 DESIGNED BY: S. BOUCHARD CHECKED BY: J. DOWNAR
 GRADING DETAILS SHEET 91 OF 173