

NOTES:

1. BARRICADE CONSTRUCTED OF HIGH IMPACT, UV-RESISTANT POLYETHYLENE.
2. EACH UNIT SHALL INCLUDE RED STANDARD 3-WAY LIGHT, 12" ORANGE FLAG AND 3M HIGH REFLECTIVE ORANGE TAPE.
3. BARRICADES SHALL BE PLACED AS SHOWN UNLESS OTHERWISE DIRECTED BY THE RESIDENT ENGINEER.
4. FOR ADDITIONAL INFORMATION ON CLOSED RUNWAY MARKERS AND LOW PROFILE BARRICADES, REFER TO THE FOLLOWING:
 - a. WWW.AIRPORTNAC.COM
 - b. WWW.TMCSAFETY.COM
 - c. WWW.TRAFFICSAFETYEQUIPMENT.COM
 - d. WWW.FMEDCO.COM
 - e. WWW.MULTI-BARRIER.COM
5. CONSTRUCTION BARRICADES ARE NOT A SEPARATE PAY ITEM. PAYMENT FOR FURNISHING, MAINTAINING, INSTALLING AND REMOVING WHEN NO LONGER NEEDED ARE TO BE INCIDENTAL TO ITEM 635.11 MOBILIZATION/DEMORILIZATION.


LOW PROFILE CONSTRUCTION BARRICADE

NO SCALE

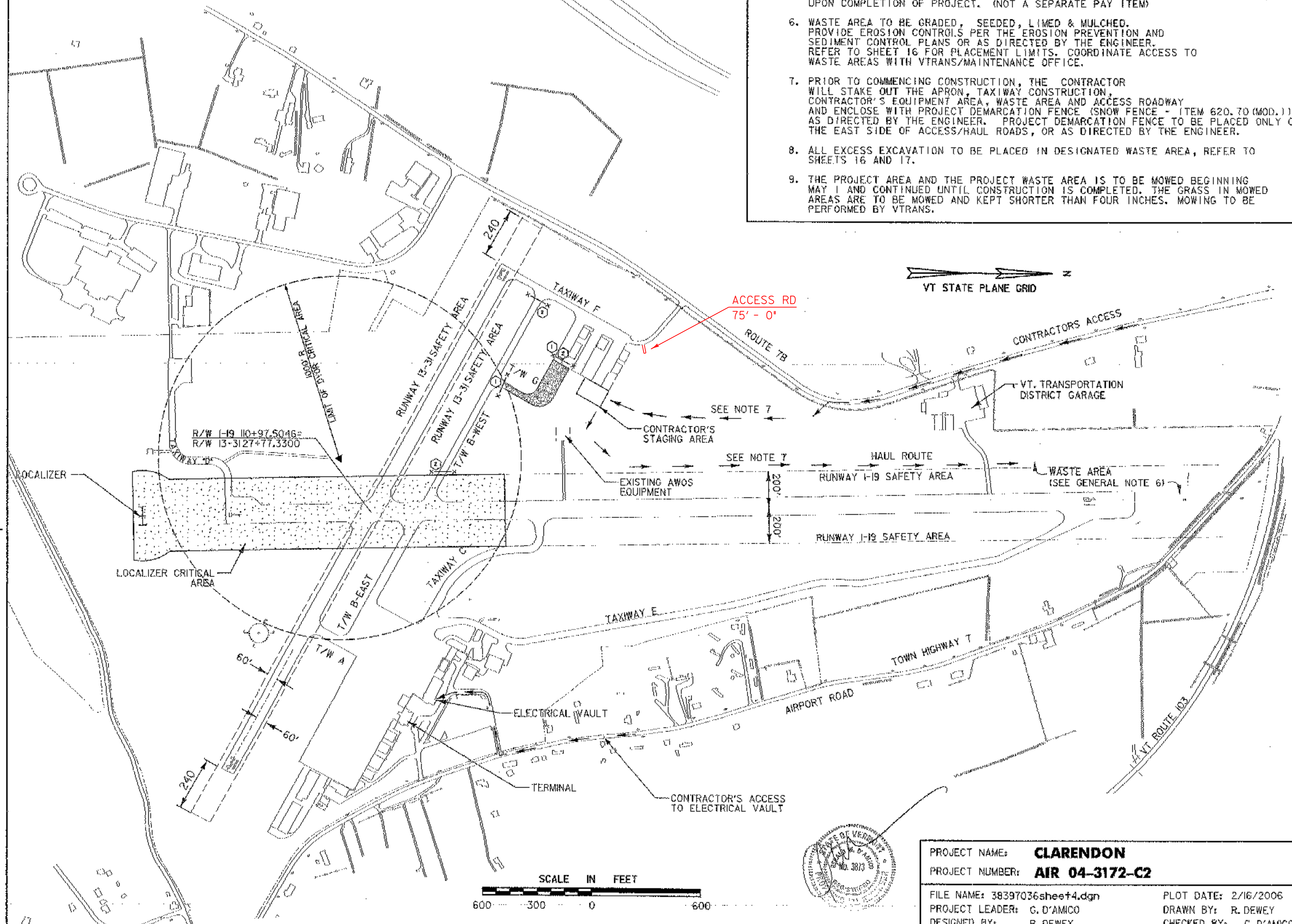
TO BE PLACED WHERE DIRECTED BY THE ENGINEER, SHOWN AS THE SYMBOL "X-X-X" ON PLAN.

- 1 BARRICADES REQUIRED DURING EXCAVATION AND PLACING BASE AND SUBBASE COURSE
- 2 BARRICADES REQUIRED DURING PAVING OPERATIONS AND INSTALLATION OF TAXIWAY SIGNS

CONSTRUCTION NOTES

1. ALL WORK MUST BE COORDINATED WITH THE RESIDENT ENGINEER AND THE AIRPORT MANAGER. RUNWAY CLOSURES REQUIRE COORDINATION WITH AIRLINE AND NOTIFICATION TO FAA/AIR TRAFFIC. ONLY ONE RUNWAY MAY BE CLOSED AT ANY ONE TIME. SEE DETAIL  FOR CLOSED RUNWAY MARKER.
2. WHENEVER LARGE AIRCRAFT ARE USING RUNWAY I-19, THE CONTRACTOR WILL BE DIRECTED TO REMOVE MEN AND EQUIPMENT A MINIMUM OF 150 FEET OFF THE RUNWAY EDGE OF PAVEMENT.
3. IF EXCAVATION IS REQUIRED WITHIN THE RUNWAY SAFETY AREAS, THE RUNWAY WILL HAVE TO BE CLOSED AS DIRECTED BY THE ENGINEER. RUNWAY I-19 MUST BE OPEN WHENEVER THE AIRLINE OR LARGE AIRCRAFT ARE LANDING OR TAKING OFF. COORDINATE ANY TEMPORARY CLOSURES WITH AIRPORT MANAGEMENT AND THE FBO. REFER TO SHEET 5, GENERAL CONSTRUCTION AND SAFETY NOTES FOR ADDITIONAL REQUIREMENTS.
4. CONSTRUCTION EQUIPMENT WILL NOT BE ALLOWED TO CROSS RUNWAY I-19, UNLESS APPROVED BY THE AIRPORT MANAGER.
5. COORDINATE WORK ALONG TAXIWAYS "B" AND "F" WITH AIRPORT MANAGER. THESE TAXIWAYS WILL HAVE TO BE CLOSED WHEN WORK IS ONGOING WITHIN THE TAXIWAY SAFETY AREA.
6. WORK WITHIN THE LOCALIZER AND DVOR CRITICAL AREA WILL REQUIRE COORDINATION WITH FAA/FLIGHT PROCEDURES DIVISION. CONTRACTOR TO COORDINATE WORK IN THESE AREAS WITH RESIDENT ENGINEER AND AIRPORT MANAGER.

DATUM	
VERTICAL	NAVD 88
HORIZONTAL	NAD 83



GENERAL NOTES

1. CONTRACTOR'S MAIN ACCESS TO SITE TO BE FROM ROUTE 78.
2. CONTRACTOR TO PROVIDE FLAG PERSON AT HAUL/ACCESS ROUTE WHEN CROSSING ACTIVE APRONS OR TAXIWAYS OR WHEN DIRECTED BY THE ENGINEER.
3. FLAGPERSON TO CONTROL ACCESS WITHIN RUNWAY AND TAXIWAY SAFETY AREAS. NO GROUND VEHICLE TRAFFIC WILL BE ALLOWED TO ENTER RUNWAY SAFETY AREAS WHEN AIRCRAFT ARE APPROACHING OR DEPARTING RUNWAY I-19.
4. FLAGPERSON IS TO HAVE AN AERONAUTICAL RADIO CAPABLE OF TRANSMITTING AND RECEIVING ON UNICOM FREQUENCY 122.8 MHZ.
5. HAUL ROUTES TO BE GRADED AND RETURNED TO ORIGINAL CONDITION UPON COMPLETION OF PROJECT. (NOT A SEPARATE PAY ITEM)
6. WASTE AREA TO BE GRADED, SEEDED, LIMED & MULCHED. PROVIDE EROSION CONTROLS PER THE EROSION PREVENTION AND SEDIMENT CONTROL PLANS OR AS DIRECTED BY THE ENGINEER. REFER TO SHEET 16 FOR PLACEMENT LIMITS. COORDINATE ACCESS TO WASTE AREAS WITH VTRANS/MAINTENANCE OFFICE.
7. PRIOR TO COMMENCING CONSTRUCTION, THE CONTRACTOR WILL STAKE OUT THE APRON, TAXIWAY CONSTRUCTION, CONTRACTOR'S EQUIPMENT AREA, WASTE AREA AND ACCESS ROADWAY AND ENCLOSE WITH PROJECT DEMARCATION FENCE (SNOW FENCE - ITEM 620.70 (MOD.)) AS DIRECTED BY THE ENGINEER. PROJECT DEMARCATION FENCE TO BE PLACED ONLY ON THE EAST SIDE OF ACCESS/HAUL ROADS, OR AS DIRECTED BY THE ENGINEER.
8. ALL EXCESS EXCAVATION TO BE PLACED IN DESIGNATED WASTE AREA, REFER TO SHEETS 16 AND 17.
9. THE PROJECT AREA AND THE PROJECT WASTE AREA IS TO BE MOWED BEGINNING MAY 1 AND CONTINUED UNTIL CONSTRUCTION IS COMPLETED. THE GRASS IN MOWED AREAS ARE TO BE MOWED AND KEPT SHORTER THAN FOUR INCHES. MOWING TO BE PERFORMED BY VTRANS.



PROJECT NAME:	CLARENDON	FILE NAME:	38397036sheet4.dgn	PLOT DATE:	2/16/2006
PROJECT NUMBER:	AIR 04-3172-C2	PROJECT LEADER:	G. D'AMICO	DRAWN BY:	R. DEWEY
		DESIGNED BY:	R. DEWEY	CHECKED BY:	G. D'AMICO
		CONSTRUCTION PHASING PLAN		SHEET 4	OF 27

AIP 3-50-0015