

REV.	DATE	DESCRIPTION

Job No. 38397036
File No. 38397036d4

RUTLAND STATE AIRPORT
CLARENDON, VERMONT

AIRFIELD LIGHTING DETAILS

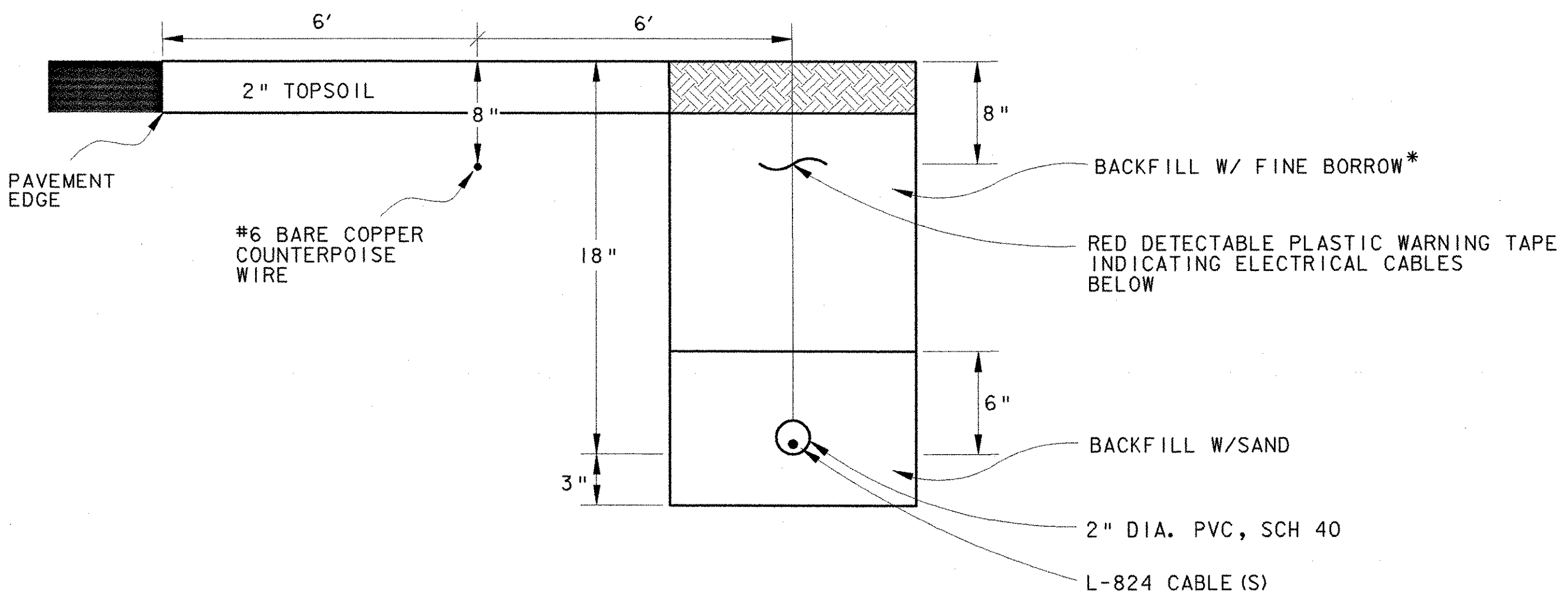
URS
28 CORPORATE DRIVE
CLIFTON PARK, NEW YORK

Designed by: G.W.D.
Drawn by: M.C.M.
Checked by: L.M.M.
Approved by: G.W.D.

Scales: NTS
Date: MARCH, 2005
Sheet 11 of 13
Sheet No 11

A.I.P. 3-50-0015-19

- NOTES:
- WHERE NECESSARY, HAND EXCAVATE AROUND EXISTING DUCT. EXISTING CABLES MAY BE DIRECT BURIAL.
 - SEE VTRANS STANDARD DRAWING AP-3 FOR ELECTRICAL DUCT DETAIL.
 - SEE VTRANS STANDARD DRAWING D-15 FOR PRE-CAST ELECTRICAL MANHOLE DETAILS.



NOTE:
ADDITIONAL CONDUITS MAY BE PLACED IN SAME TRENCH @ 3" SPACING. MAX. NUMBER OF CABLES / CONDUIT PER N.E.C.

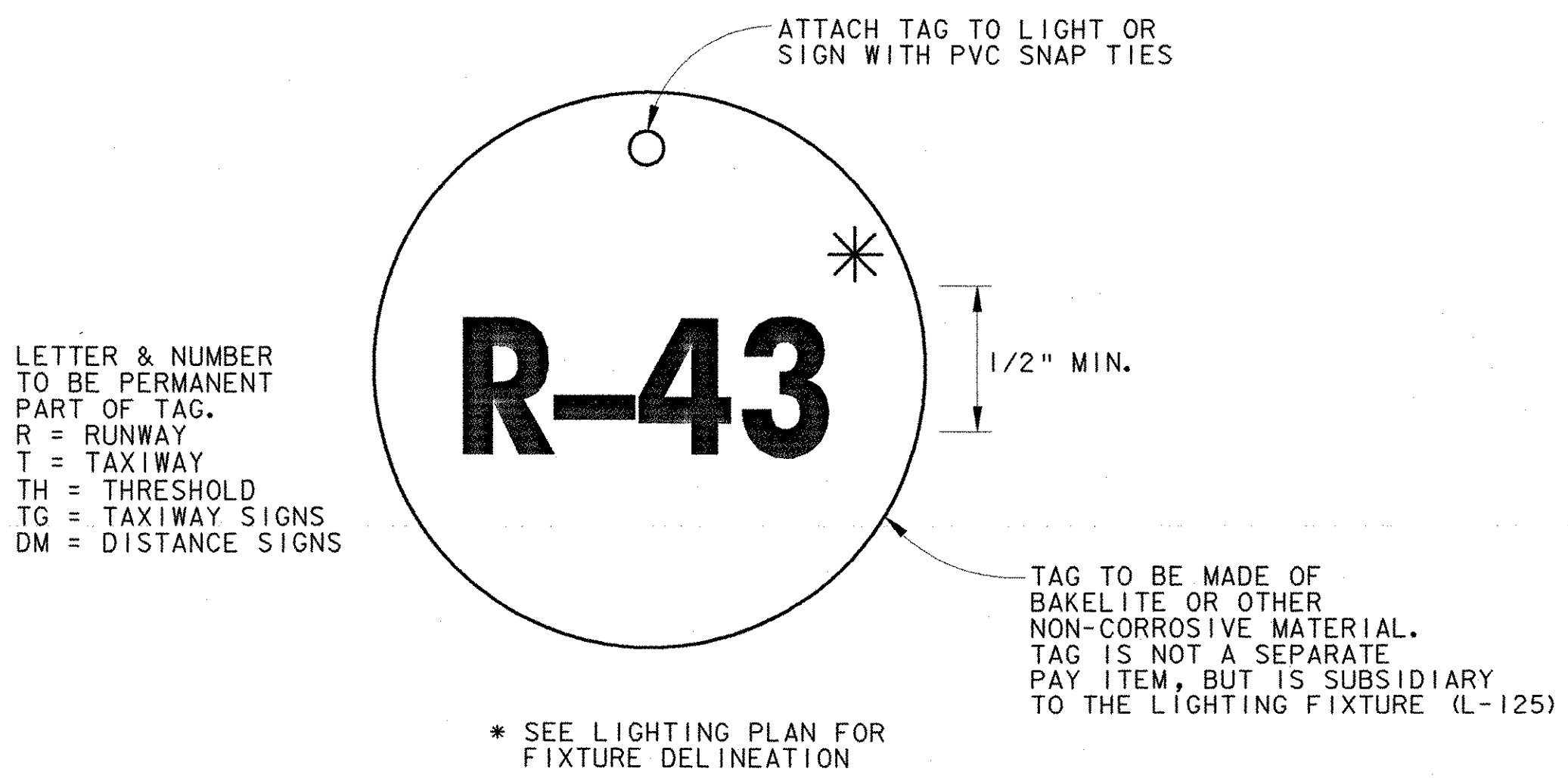
WHERE CABLE IS INSTALLED ADJACENT TO PAVEMENT, COUNTERPOISE IS INSTALLED 8-INCHES BELOW FINISHED GRADE AND INSTALLED HALF THE DISTANCE FROM THE EDGE OF PAVEMENT TO THE DUCT.

WHERE CABLE IS NOT INSTALLED ADJACENT TO PAVEMENT, COUNTERPOISE IS INSTALLED 4-INCHES MINIMUM ABOVE DUCT OR TO A HEIGHT WHERE THE DUCT IS PROTECTED WITH A 45 DEGREE ZONE OF PROTECTION BELOW THE COUNTERPOISE.

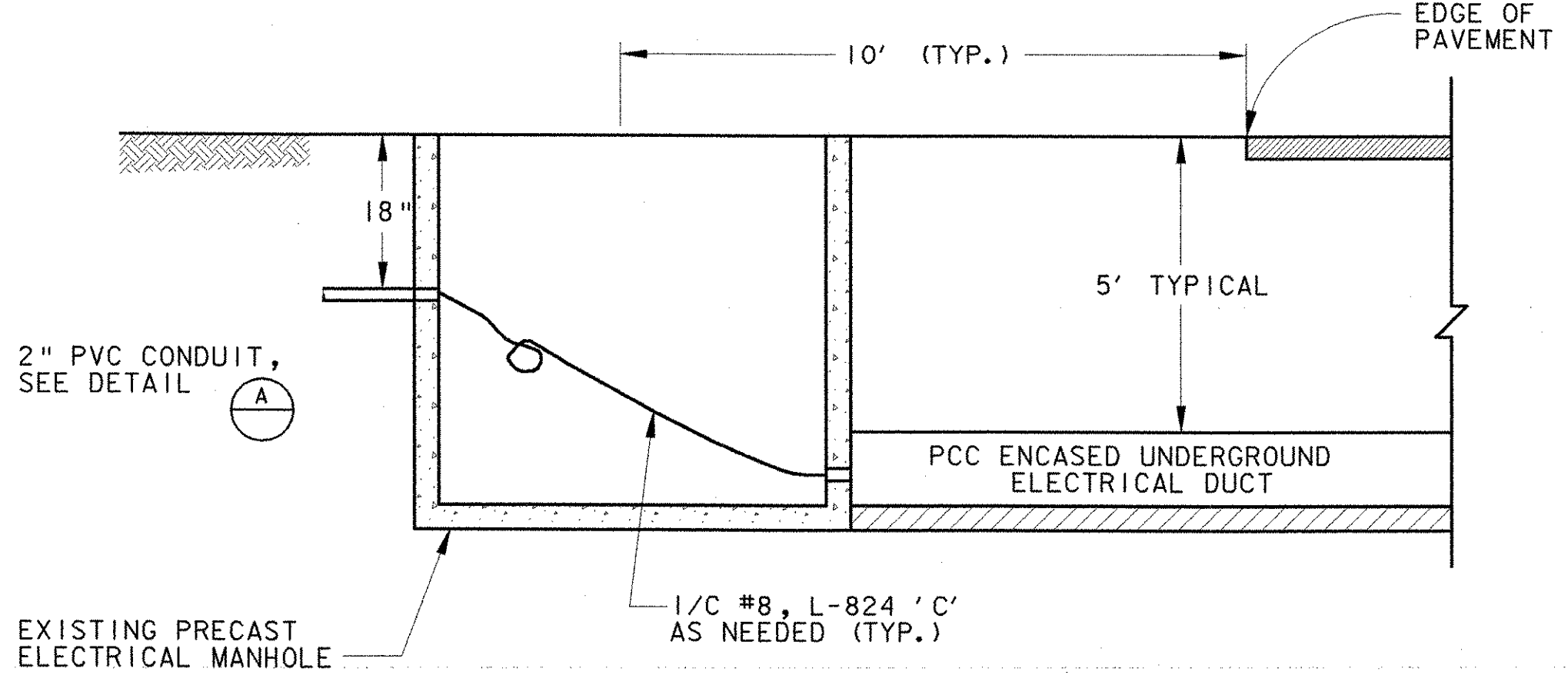
EXCAVATION FOR THE INSTALLATION OF COUNTERPOISE WIRE TO BE INCIDENTAL TO ITEM 864.06

* FINE BORROW-MATERIAL REASONABLY FREE FROM LOAM, CLAY OR ORGANIC MATERIAL, MAXIMUM SIZE = 1/2"

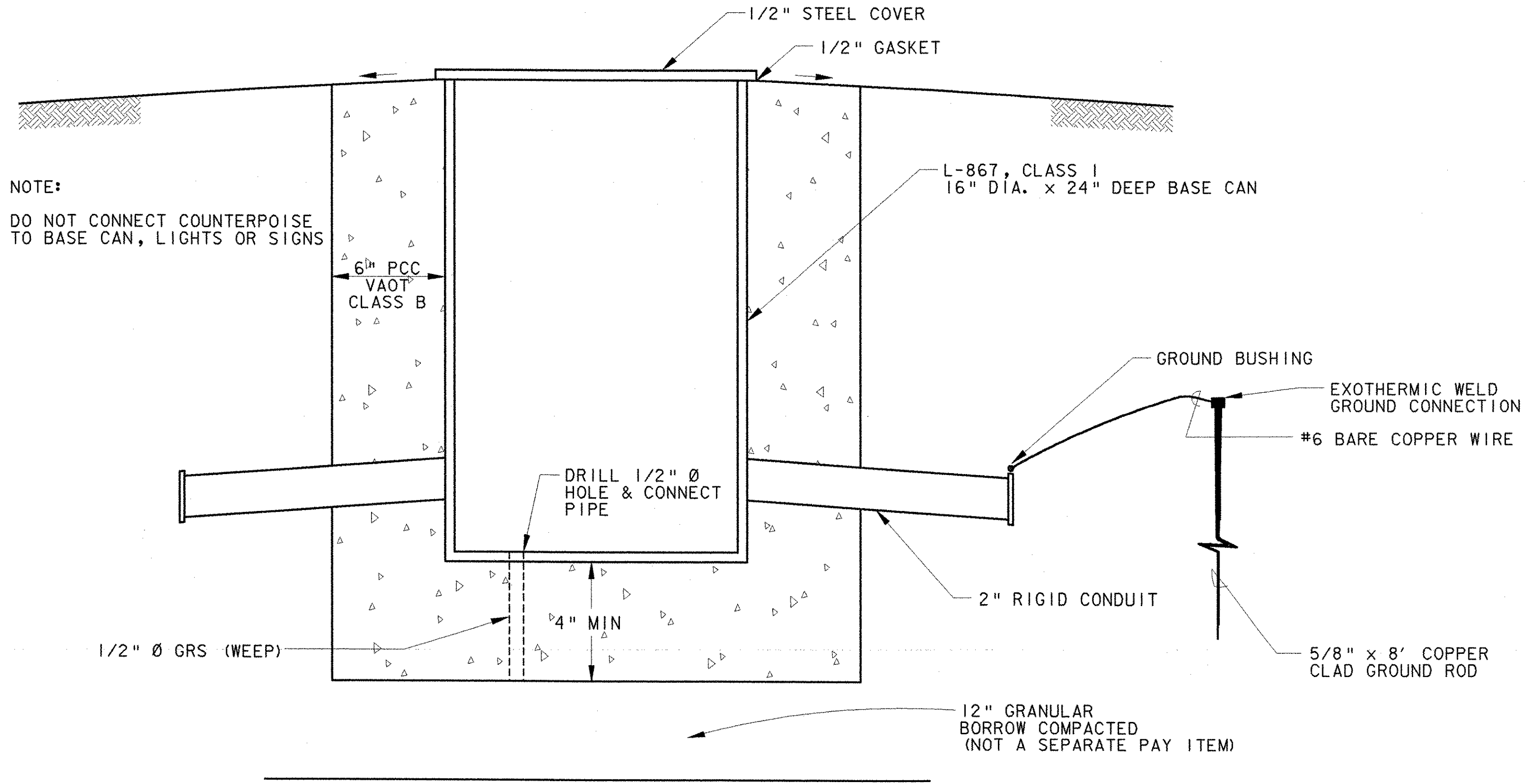
A CONDUIT TRENCH DETAIL (TYP)
SCALE: NONE L-108



C FIXTURE IDENTIFICATION TAG (TYP)
SCALE: NONE



B CONDUIT DUCT DETAIL (TYP)
SCALE: NONE



NOTE:
DO NOT CONNECT COUNTERPOISE TO BASE CAN, LIGHTS OR SIGNS

ELECTRICAL HANDHOLES TO BE PLACED WHERE DIRECTED BY THE ENGINEER. THE CONTRACTOR MAY OPT TO USE A MANUFACTURED HANDHOLE SUCH AS "QUAZITE" OR SIMILAR, OUTSIDE THE RUNWAY AND TAXIWAY SAFETY AREA, WHEN APPROVED BY THE ENGINEER.

D ELECTRIC HANDHOLE
SCALE: NONE ITEM 604.11