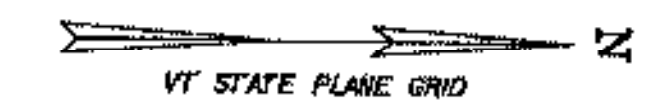
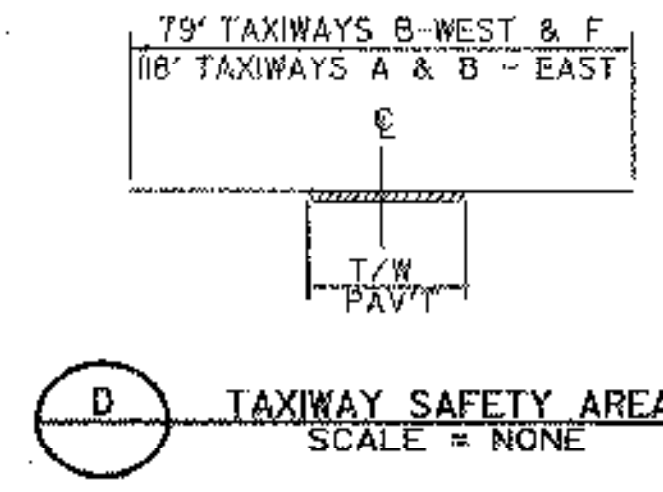
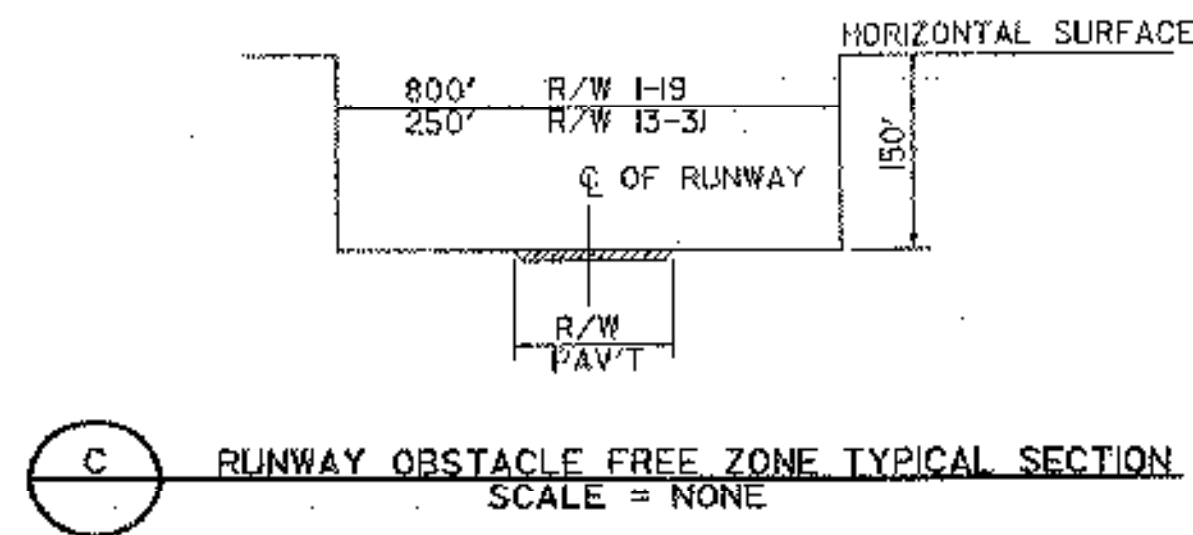


PROJECT DESCRIPTION

- PROJECT "A"**
 (1) INSTALL AIRFIELD FENCE (APPROX. 12,200 LINEAR FEET)
 (2) INSTALL MTLs AND SIGNS ON TAXIWAYS A AND B-EAST
 (3) RELOCATE SIGNS ON TAXIWAYS B-WEST AND F

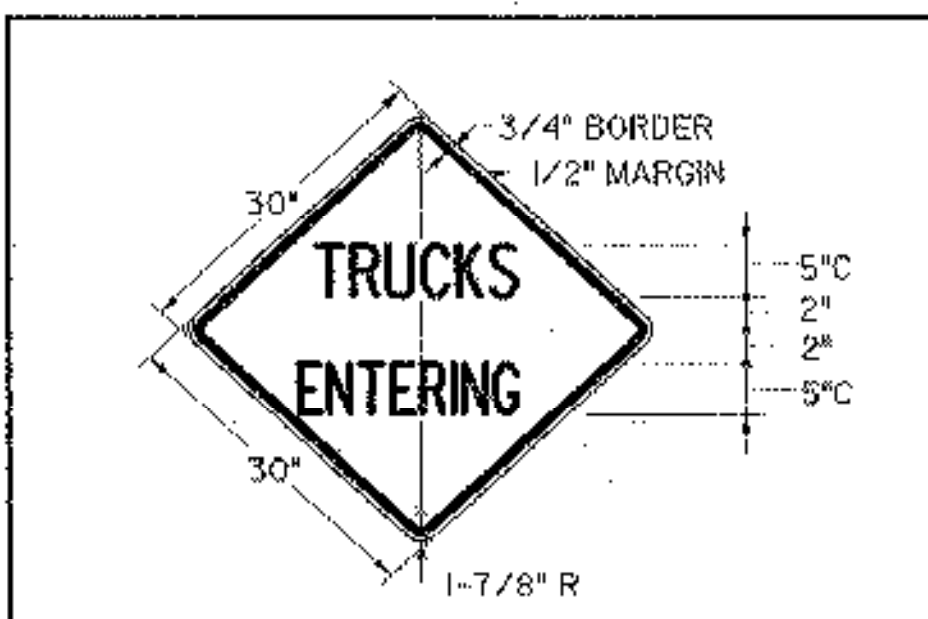
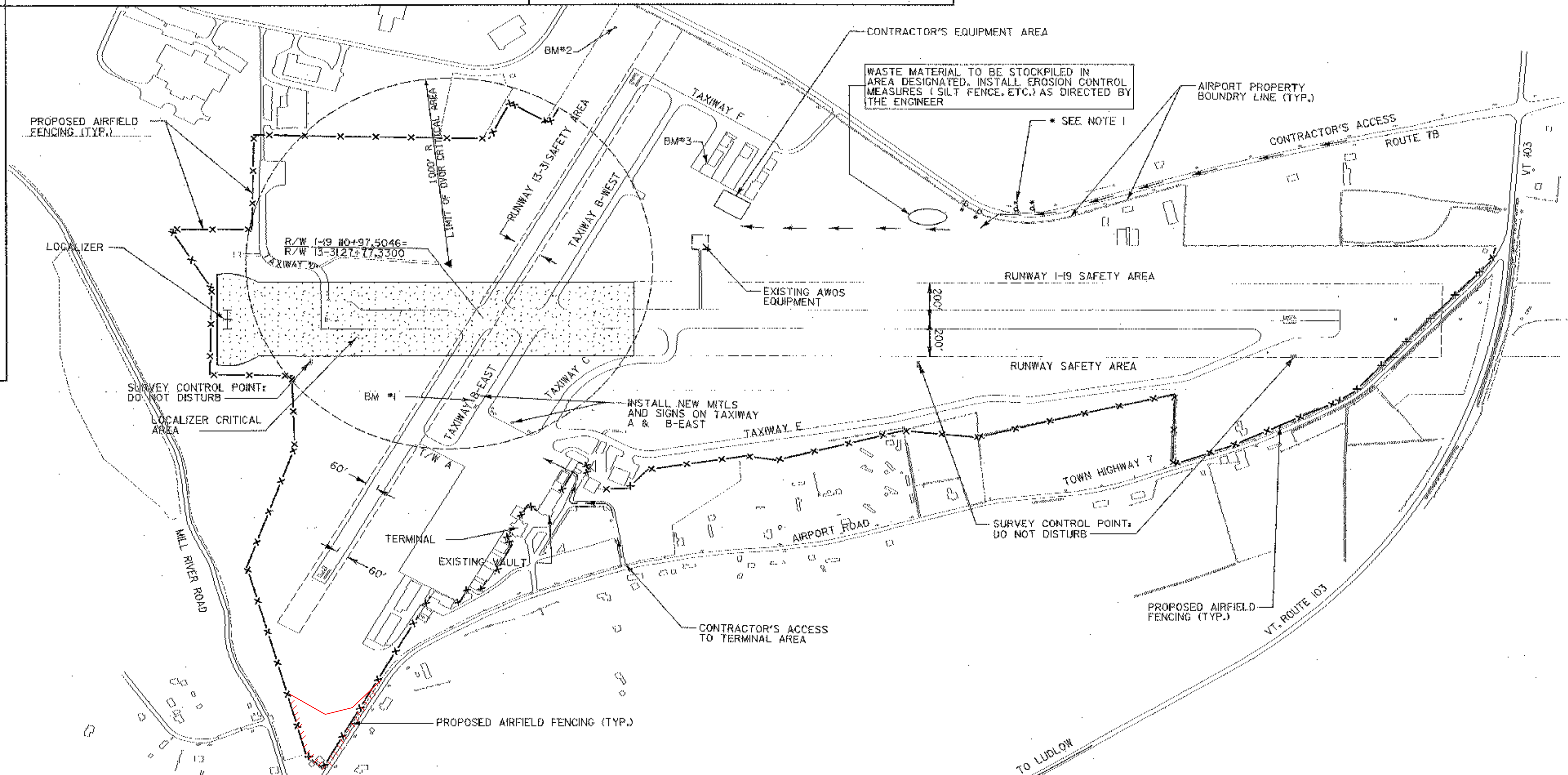
ALL WORK ON ITEMS (2) AND (3) ABOVE WILL HAVE TO BE COMPLETED WITHIN 21 CALENDAR DAYS FROM THE START OF WORK ON THESE ITEMS.



NOTES

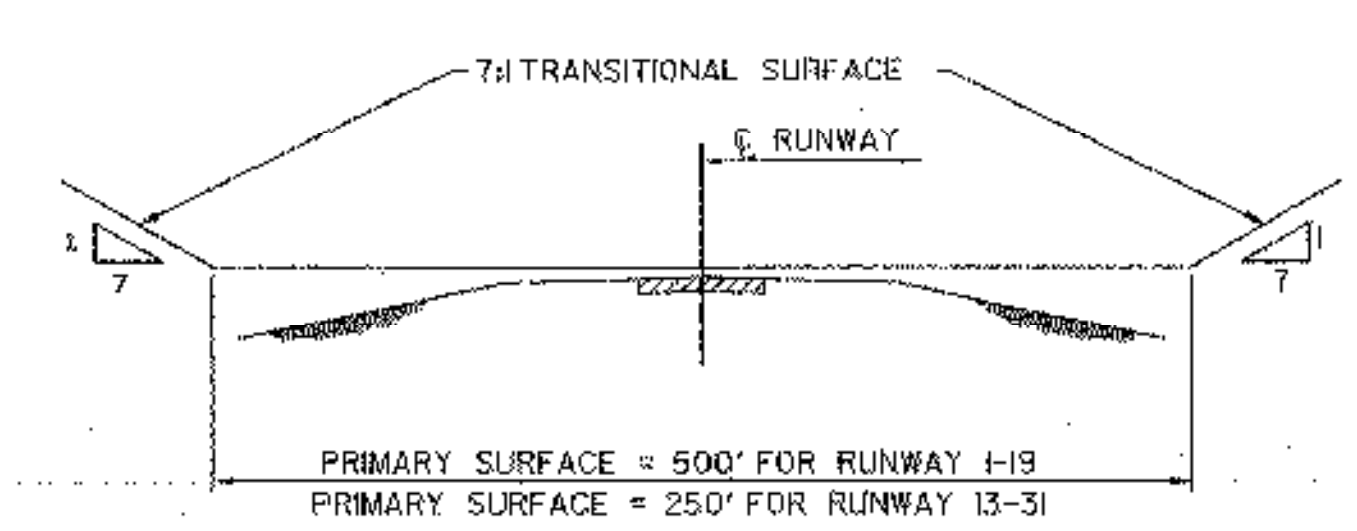
- TWO (2) TRUCK ENTERING SIGNS TO BE PLACED ON ROUTE 7B APPROXIMATELY 150' AND 75' FROM THE CONTRACTOR'S ENTRANCE TO THE AIRPORT. IN EACH DIRECTION, SIGNS TO BE PLACED AT LEAST 8' OFF ROADWAY EDGE OF PAVEMENT.
- NORTH REFERS TO THE VERMONT COORDINATE SYSTEM BASED NGS MONUMENTS RUTLAND CBL 100 E AND RUTLAND CBL 650.
- ELEVATIONS REFER TO THE NORTH AMERICAN VERTICAL DATUM OF 1988 (NAVD 88) BASED UPON NGS BENCH MARK RUTLAND CBL 100 E HOLDING THE PUBLISHED ELEVATION OF 783.36.
- COORDINATES SHIFTED FROM NAD 83 VERMONT STATE PLANE (VSP) U.S. FT. ADD 1,500,000 TO THE X COORDINATE AND 300,000 TO THE Y COORDINATE TO RETURN TO THE VSP COORDINATE SYSTEM

- BENCHMARK #1**
 DISK 650M, 1979
 374614.055N, 1521821.019E
 ELEVATION 782.54
- BENCHMARK #2**
 DISK 1105, 1987
 378552.773N, 1520976.989E
 ELEVATION 773.79
- BENCHMARK #3**
 R.R. SPIKE IN PAVEMENT
 375740.432N, 1520314.989E
 ELEVATION 780.22

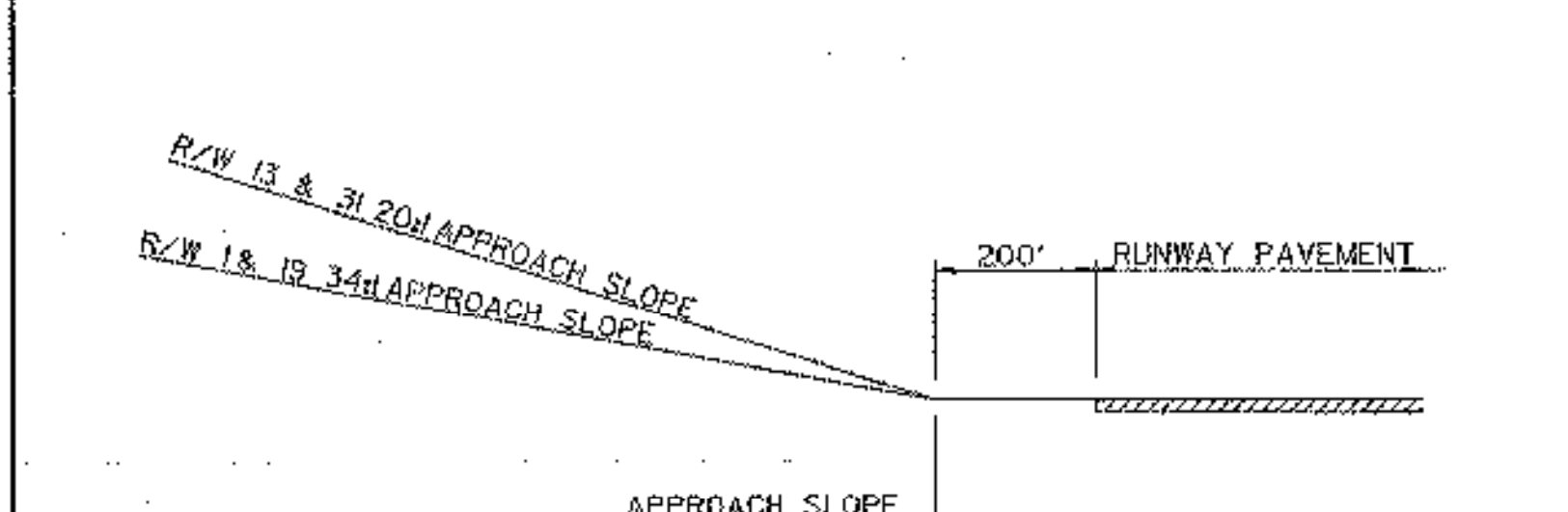


COLORS
 TEXT & BORDER - BLACK (NON-REFLECT.)
 BACKGROUND - YELLOW (REFLECT.)
 E-121 STANDARD SIGN PLACEMENT
 E-100 CONSTRUCTION APPROACH SIGNS

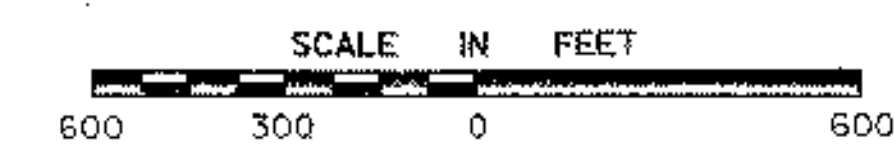
TRUCKS ENTERING WARNING SIGN



A TYPICAL SECTION F.A.R. PART 77 IMAGINARY SURFACES NOT TO SCALE



B TYPICAL PROFILE F.A.R. PART 77 IMAGINARY SURFACES NOT TO SCALE



NOTE:
 CLEARING & GRUBBING ADDED FOR TAXIWAY D & E. SEE C.O. #3.



| REV. | DATE | DESCRIPTION |
|------|------|-------------|
| | | |
| | | |

Job No. 38397036
 File No. 3839703663

RUTLAND STATE AIRPORT
 CLARENDON, VERMONT

GENERAL PROJECT LAYOUT

URS
 28 CORPORATE DRIVE
 CLIFTON PARK, NEW YORK

Designed by G.M.D.
 Drawn by M.M.
 Checked by G.M.D.
 Approved by G.M.D.

Scale: 1" = 300'

Date: MARCH, 2005

Sheet 3 of 13

Sheet No. **3**