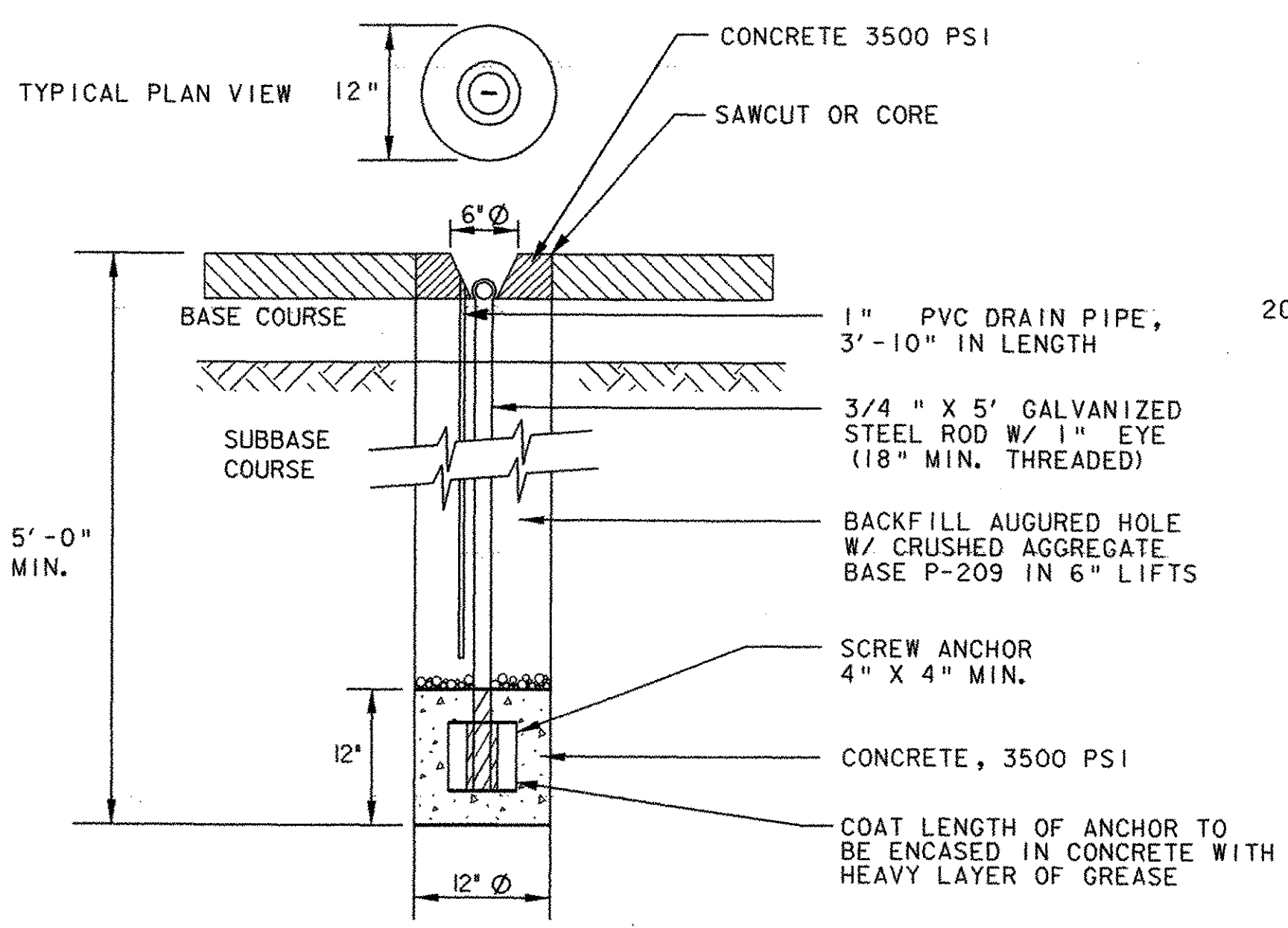
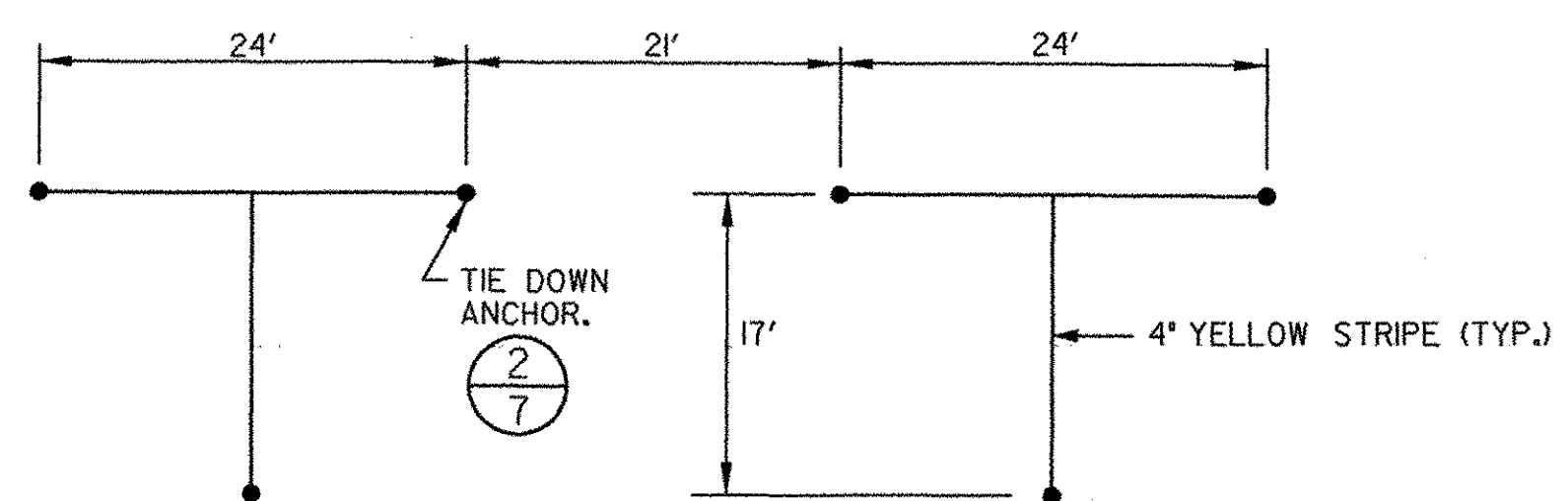


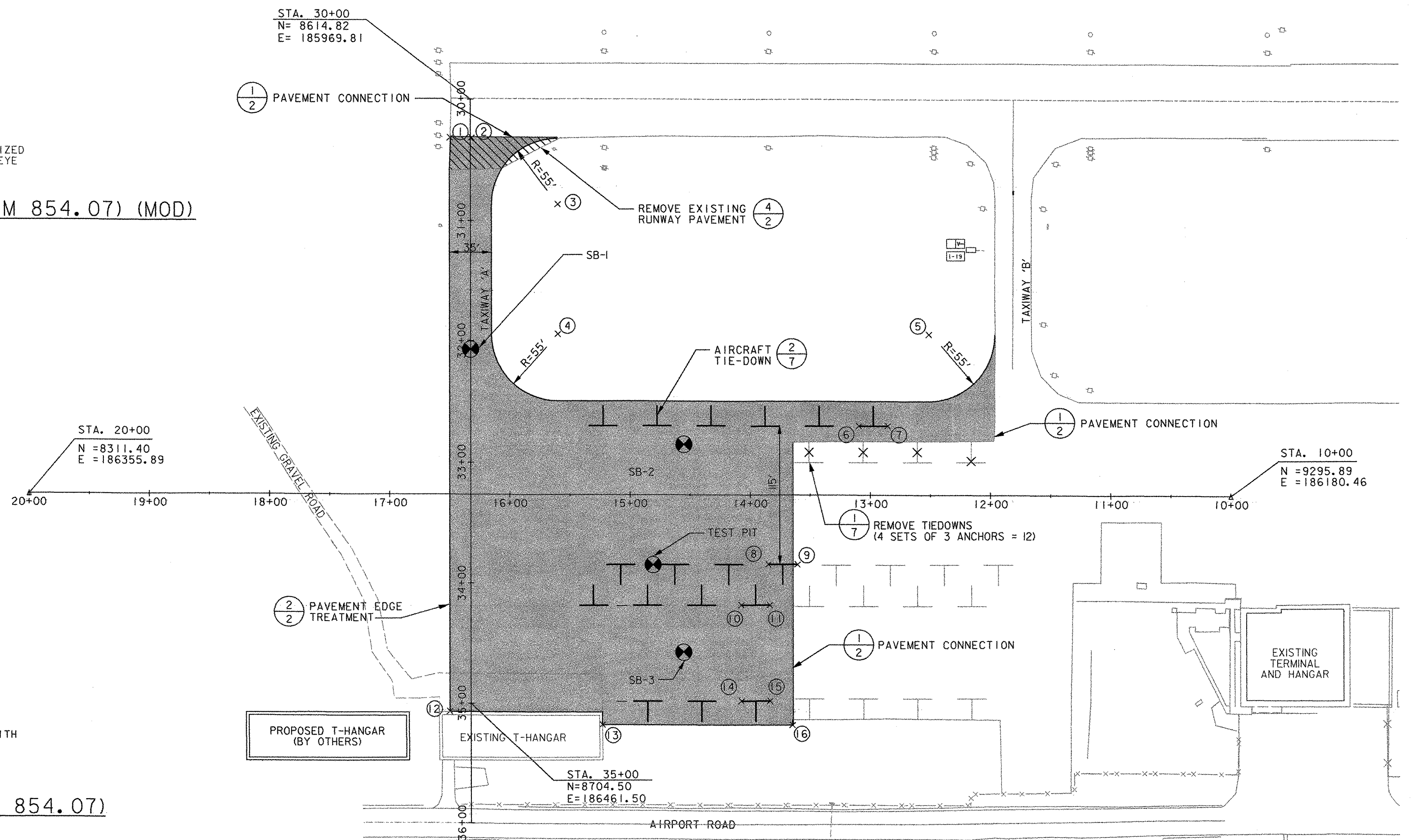
1 AIRCRAFT TIE-DOWN ANCHOR REMOVAL (ITEM 854.07) (MOD)  
NOT TO SCALE



2 AIRCRAFT TIE-DOWN ANCHOR TYPE A (ITEM 854.07)  
NOT TO SCALE

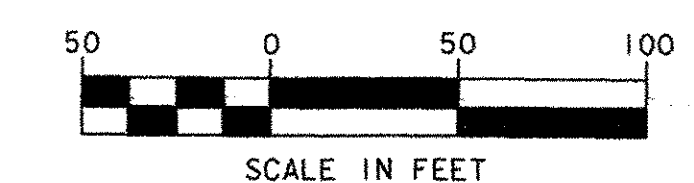


3 AIRCRAFT TIE-DOWN LAYOUT DETAIL  
NOT TO SCALE



POINT LAYOUT TABLE				
POINT NUMBER	DESCRIPTION	STATION	OFFSET	SIDE
1	SOUTHWEST CORNER OF TAXIWAY A	16+49.87	294.60	RT
2	INTERSECTION OF CENTERLINE OF TAXIWAY "A"/RUNWAY 1-19 EDGE	16+31.63	295.56	RT
3	CENTER OF PAVEMENT EDGE RADIUS	15+59.85	240.58	RT
4	CENTER OF PAVEMENT EDGE RADIUS	15+59.85	132.48	RT
5	CENTER OF PAVEMENT EDGE RADIUS	12+51.15	132.55	RT
6	TIEDOWN ANCHOR	13+09.32	56.77	RT
7	TIEDOWN ANCHOR	12+85.62	56.77	RT
8	TIEDOWN ANCHOR	13+85.01	57.16	LT
9	TIEDOWN ANCHOR	13+60.74	57.16	LT
10	TIEDOWN ANCHOR	14+07.83	90.92	LT
11	TIEDOWN ANCHOR	13+83.84	90.92	LT
12	SOUTH EAST CORNER OF APRON	16+49.64	180.20	LT
13	EASTERN CORNER OF APRON	15+23.14	190.85	LT
14	TIEDOWN ANCHOR	14+07.26	170.75	LT
15	TIEDOWN ANCHOR	13+83.38	170.75	LT
16	NORTHEAST CORNER OF APRON	13+65.14	190.85	LT

LOCATION OF GEOTECHNICAL TEST PIT OR SOIL BORING (SEE PROPOSAL FOR TEST PIT/ SOIL BORING DATA)



PROJECT NAME: FRANKLIN COUNTY AIRPORT

PROJECT NUMBER: AIR 04-3170

FILE NAME: ...z000layout+plan.dgn

DESIGNED BY: MLC

**APRON LAYOUT PLAN**

PLOT DATE: 04/06/2004

DRAWN BY: JDO

CHECKED BY: DPD

SHEET 7 OF 17