

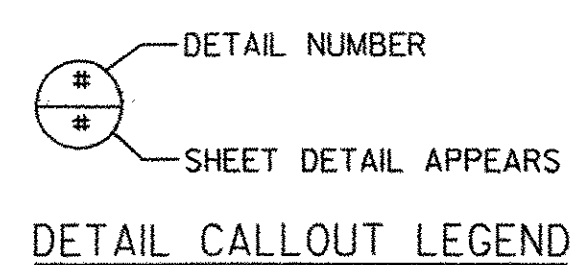
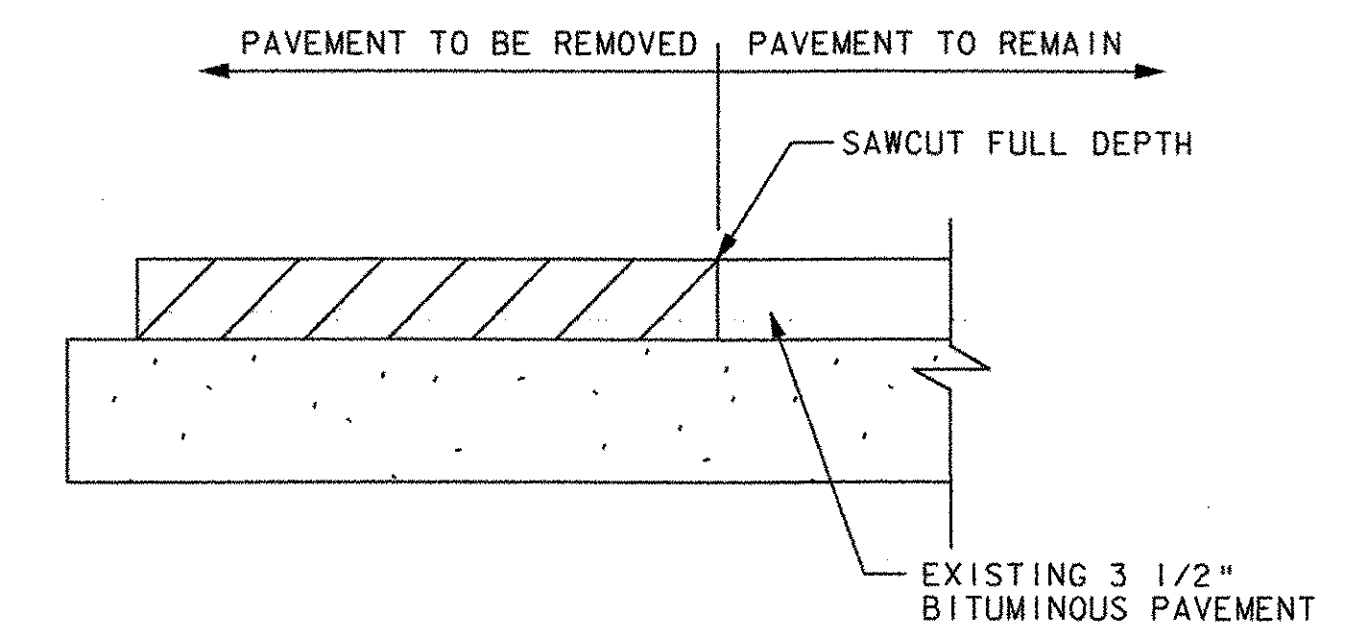
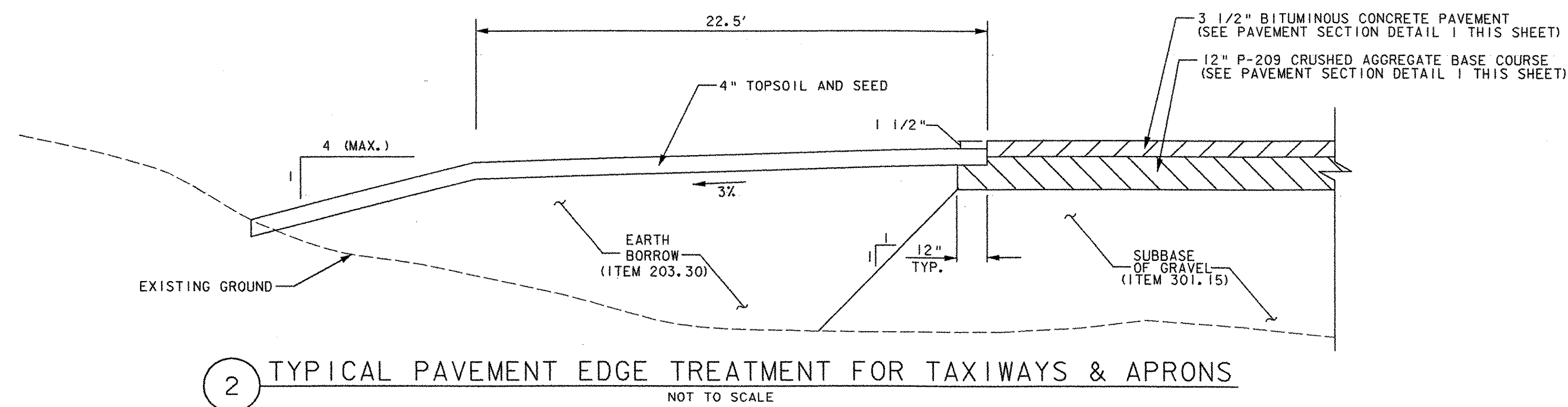
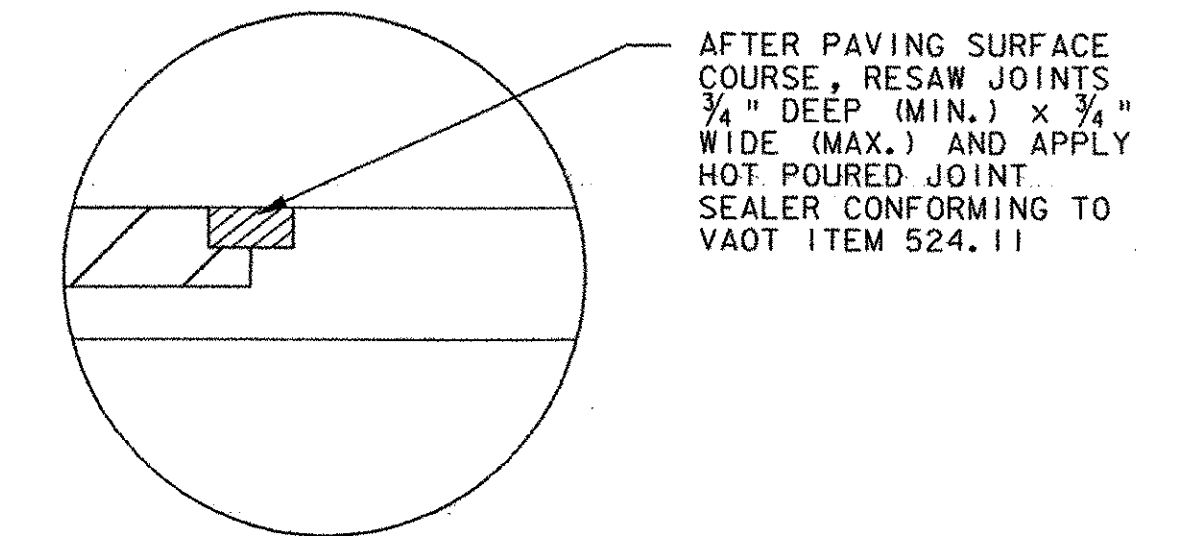
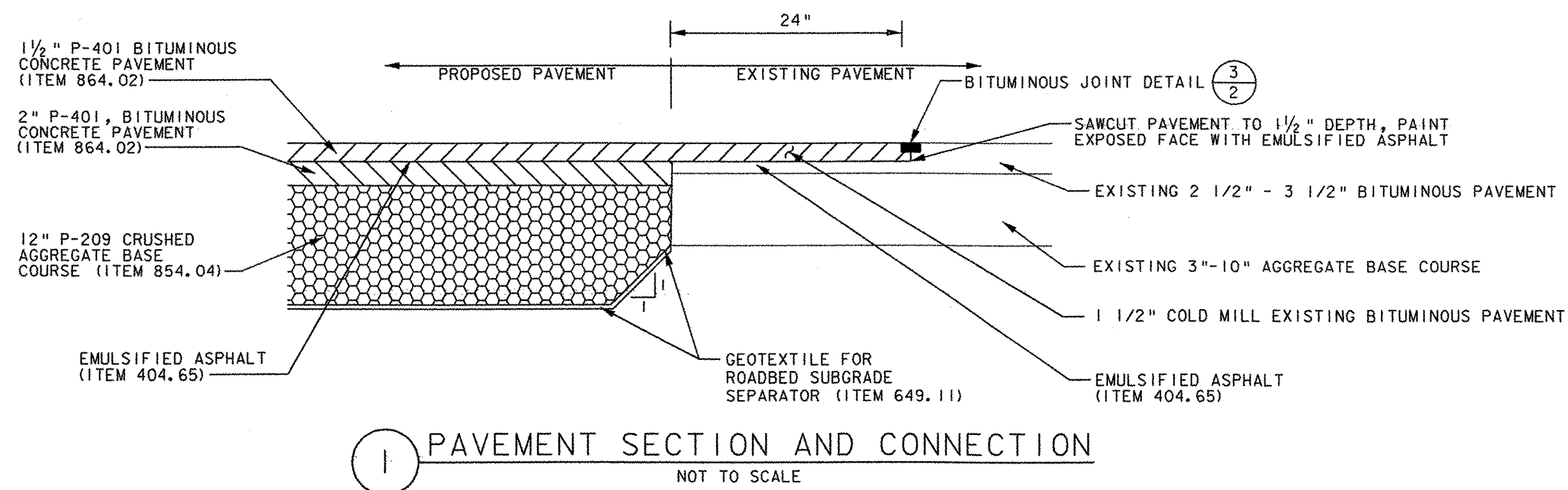
TYPICAL SECTIONS

NPDES SEEDING FORMULA

% WT.	LBS./AC.	NAME
42	20	CREeping RED FESCUE
42	20	SMOOTH BROMEGRASS
16	8	BIRDFOOT TREFOIL

SEEDING NOTES

- SEED MIXTURE: SHALL NOT HAVE A WEED CONTENT EXCEEDING 0.40% BY WEIGHT AND SHALL BE FREE OF ALL NOXIOUS SEED.
- SEED: TO BE APPLIED PER NPDES SEEDING FORMULAS OR AS DIRECTED BY THE ENGINEER. HYDROSEED USE IS PREFERRED BUT NOTE THAT QUANTITIES WERE CALCULATED USING BROADCAST APPLICATION RATE.
- FERTILIZER: FORMULA 10-20-10, TO BE USED WITH SEED, APPLIED AT THE RATE OF 500 LBS./ACRE. (HYDRO SEEDERS MAY USE 19-19-19 FORMULA).
- AGRICULTURAL LIMESTONE: TO BE APPLIED AT THE RATE OF 2 TONS/ACRE, OR AS DIRECTED BY THE ENGINEER.
- STRAW MULCH: TO BE PLACED ON EARTH SLOPES AT THE RATE OF 2 TONS/ACRE, OR AS DIRECTED BY THE ENGINEER.
- TOPSOIL: TO BE USED WITH SEED AS INDICATED ON THE PLANS, OR AS DIRECTED BY THE ENGINEER.



	PROJECT NAME: FRANKLIN COUNTY AIRPORT	PLOT DATE: 04/06/2004
	PROJECT NUMBER: AIR 04-3170	DRAWN BY: JDO
	FILE NAME: ...z000frm.dgn	CHECKED BY: DPD
	PROJECT LEADER: MLC	SHEET 2 OF 17
	DESIGNED BY: MLC	

TYPICAL SECTIONS & DETAILS