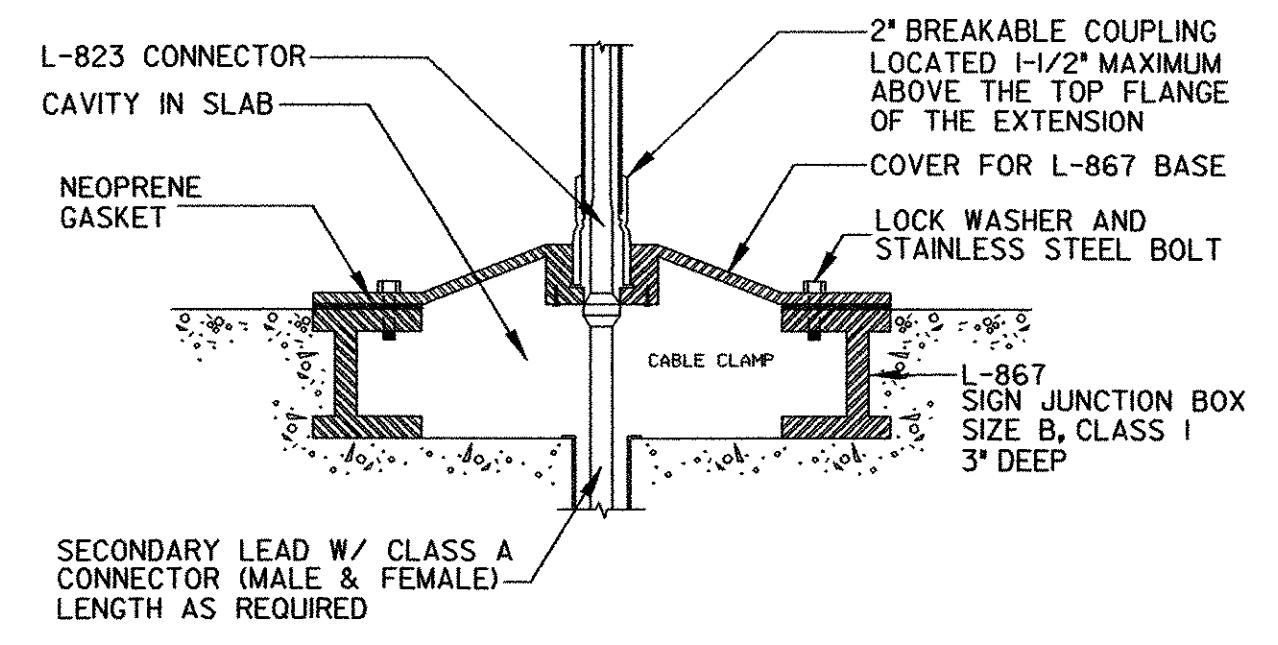


- 3' L-867 SIGN JUNCTION BOX
CONTRACTOR TO PROVIDE ADDITIONAL
L-823 CONNECTOR REQ'D IN CABLE
SEE DETAIL BELOW
- COVER PLATE
W/ GASKET
- 12" L-867
TYPE I BASE
- 4" PRECAST CONCRETE
HANDHOLE. CONCRETE
TO BE AIR ENTRAINED
3000 PSI @ 28 DAYS
- #8 BARE COUNTERPOISE
WIRE ROUTED AROUND BASE
- 2" Ø GALVANIZED
RIGID STEEL
CONDUIT STUB
- (2) 1/2" #8, 5KV, L-824C
TO NEAREST R/W LIGHT
- SEAL END OF CONDUIT W/
DUCT SEAL
- L-823 CONNECTOR
- L-830 TRANSFORMER
- SUMP, FILL W/ CRUSHED STONE

NOTES: 1. RUNWAY HOLD SIGNS SHALL BE FAA TYPE L-858R W/ WHITE LETTERS
ON RED BACKGROUND SIZE 1; CLASS 2; STYLE 2; LOW VA; HIGH POWER FACTOR
PAID FOR AS 864J4; L-125, TAXIWAY GUIDANCE SIGN (MOD.) (RUNWAY HOLD SIGN)
2. SEE SHEET 9 FOR LOCATIONS.
3. BACK SIDE OF SIGN IS A BLANK, BLACK PANEL
4. HANDHOLES AND JUNCTION BOXES ARE INCIDENTAL TO ITEM 864J4.

TAXIWAY GUIDANCE SIGN (MOD.)
NOT TO SCALE



NOTE:
1. SEE SHEET 9 FOR LOCATION.

SIGN JUNCTION BOX DETAIL
NOT TO SCALE

	PROJECT NAME: SPRINGFIELD AIR
	PROJECT NUMBER: 04-3161
	FILE NAME: hartness frn.dgn
	DESIGNED BY: TPL
PROJECT LEADER: JBL	PLOT DATE: 05/21/2003
CHECKED BY: JBL	DRAWN BY: TPL
LIGHTED HOLD SIGN DETAIL	SHEET 8 OF 17

...:\watson\p1001105\040416.dwt 05/21/2003 10:47:14 AM