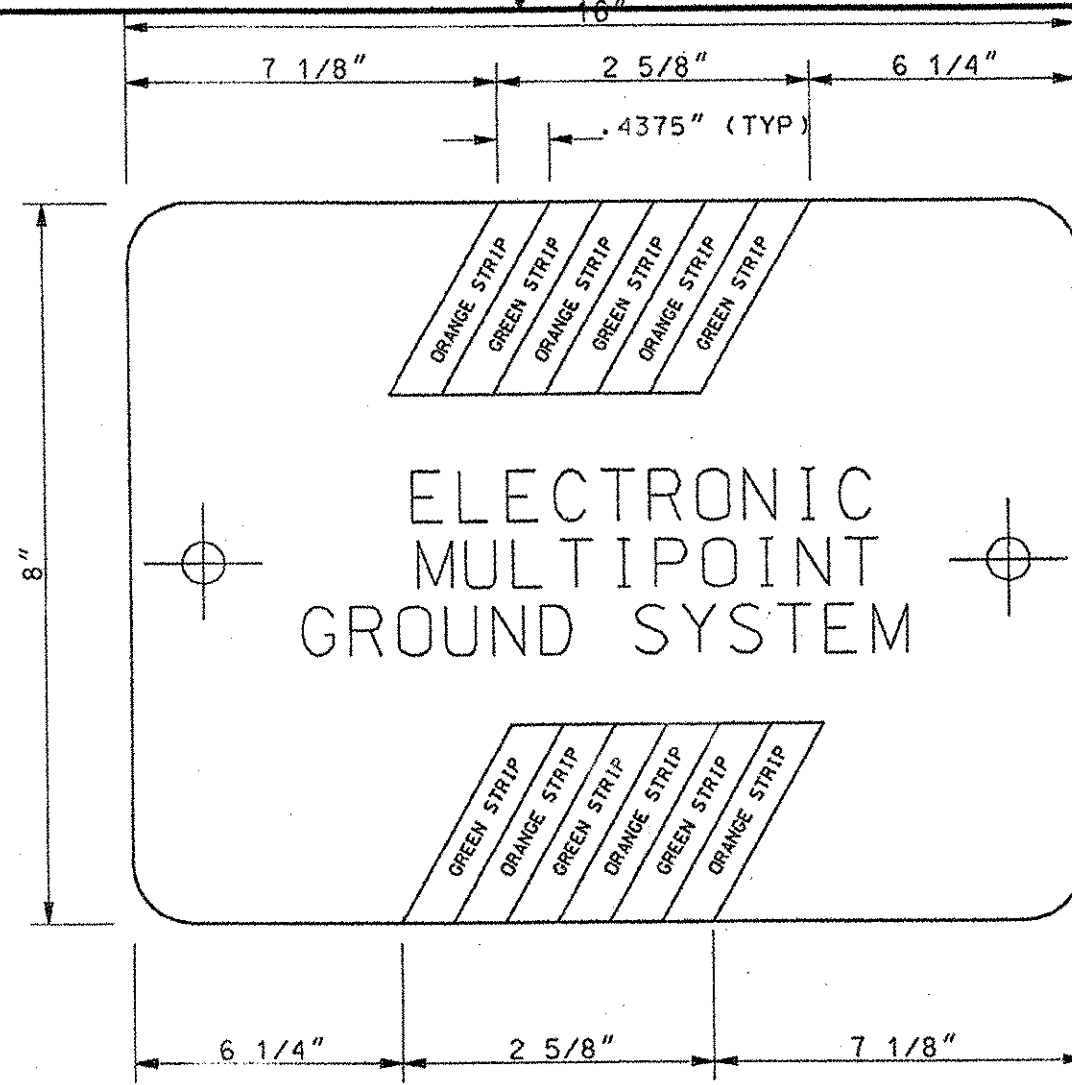


NOTES

1. COPPER BAR TO BE 1/4" THICK X 4" WIDE 12" LONG.
2. GRIND CORNERS TO BREAK SHARP EDGES.

MULTI POINT GROUND PLATE
NOT TO SCALE



NOTES

1. PLASTIC COVERS 3/16" CLEAR PLEXIGLASS.
2. HOLE SIZES TO BE AS FOLLOWS:
A: .281" DIA
3. GRIND CORNERS TO BREAK SHARP EDGES.

COVER PLATE DETAIL
NOT TO SCALE

NEC STANDARD COLOR CODES (FA-C-1217E)

PAIR NO.	TIP	RING
1	WHITE	BLUE
2	WHITE	ORANGE
3	GREEN	GREEN
4	WHITE	BROWN
5	WHITE	SLATE
6	RED	BLUE
7	RED	ORANGE
8	RED	GREEN
9	RED	BROWN
10	RED	SLATE
11	BLACK	BLUE
12	BLACK	ORANGE
13	BLACK	GREEN
14	BLACK	BROWN
15	BLACK	SLATE
16	YELLOW	BLUE
17	YELLOW	ORANGE
18	YELLOW	GREEN
19	YELLOW	BROWN
20	YELLOW	SLATE
21	VIOLET	BLUE
22	VIOLET	ORANGE
23	VIOLET	GREEN
24	VIOLET	BROWN
25	VIOLET	SLATE

#19 WIRE TERMINATIONS

REFERENCE ONLY

NOTE: EXCEPT WHERE INDICATED, ALL MATERIAL SHALL BE FURNISHED AND INSTALLED BY THE SHELTER MANUFACTURER

NOTES

1. CONDUIT SHALL BE SURFACE MTD 3/4" EMT OR LARGER.
2. CONDUIT CONNECTORS SHALL BE OF THE COMPRESSION TYPE.
3. CONDUCTORS SHALL BE THHN STRANDED, EXCEPT CONDUCTORS WIRED TO CIRCUIT #4, WHICH SHALL BE THWN STRANDED.
4. CONDUCTOR SIZES SHALL BE AS INDICATED ON THE PANEL SCHEDULE.
5. SPLICES FOR CONDUCTORS SHALL BE MADE WITH U.L. LISTED CONNECTORS.
6. ELECTRICAL J-BOXES SHALL BE GALVANIZED STEEL, EXCEPT WHERE OTHERWISE NOTED.
7. ELECTRICAL DEVICE BOXES (RECEPTACLE, ETC.) SHALL BE GALVANIZED STEEL.
8. THERMOSTATS SHALL BE AT 5'-0" A.F.F.
9. RECEPTACLES SHALL BE AS SHOWN A.F.F.
10. SWITCHES SHALL BE MTD AT 4'-0" A.F.F.
11. PANELBOARD RATED FOR 100A, ONLY 100A MAIN BREAKER INSTALLED.
12. DISCONNECT SWITCH RATED FOR 100A, ONLY 100A FUSES INSTALLED.
13. CIRCUITS #2, #4, #6, #8, #10, #12, #14 AND #16 FOR FUTURE USE.
14. EACH CIRCUIT SHALL HAVE ITS OWN NEUTRAL.
15. EACH CIRCUIT SHALL HAVE ITS OWN GROUND.
16. DEVICE TERMINALS (LUGS) FOR CONNECTION OF MORE THAN ONE CONDUCTOR SHALL BE SPECIFICALLY DESIGNED FOR THAT PURPOSE. PROPER LUG COORDINATION SHALL BE USED TO ENSURE PROPER INSTALLATION OF THE SERVICE FEEDERS AND THE SURGE PROTECTION DEVICE.

THIS DRAWING SUPERSEDES DRAWING
NE-D-27464-010/C1, REV 1, DATED 11/02/1998

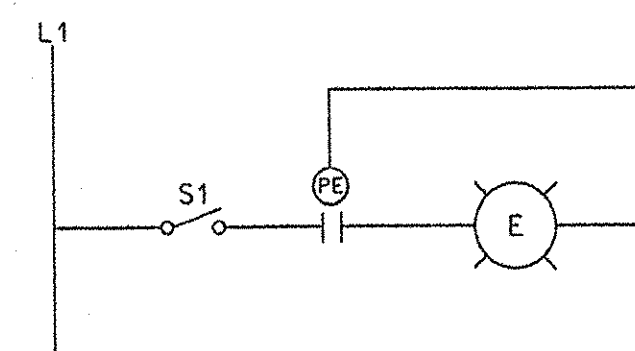
REV	DATE	DESCRIPTION	JCN	REDLINE DATE	APVD
B	02/14/2002	PROPOSED/WR#6940/sls		3426	01/08/2002

DEPARTMENT OF TRANSPORTATION
FEDERAL AVIATION ADMINISTRATION
BOSTON IMPLEMENTATION CENTER BURLINGTON, MA 01803
RUNWAY 19 (GL) FAN MARKER (FM)

**EQUIPMENT SHELTER
ELECTRICAL
DETAILS**

CHITTENDEN	RUTLAND STATE AIRPORT	VT
REVIEWED BY: <i>[Signature]</i>	SUBMITTED BY: <i>[Signature]</i>	APPROVED BY: <i>[Signature]</i>
DESIGNED: D. DAUDIER, ANI-180	DATE: 02/14/2002	P. KIRBY, ANI-180
DRAWN: JIM/DD	ISSUED BY: NAS IMPLEMENTATION ANI-100	DRAWING NO: 3426
CHECKED: sls	NE-D-27464-E005	REV: B

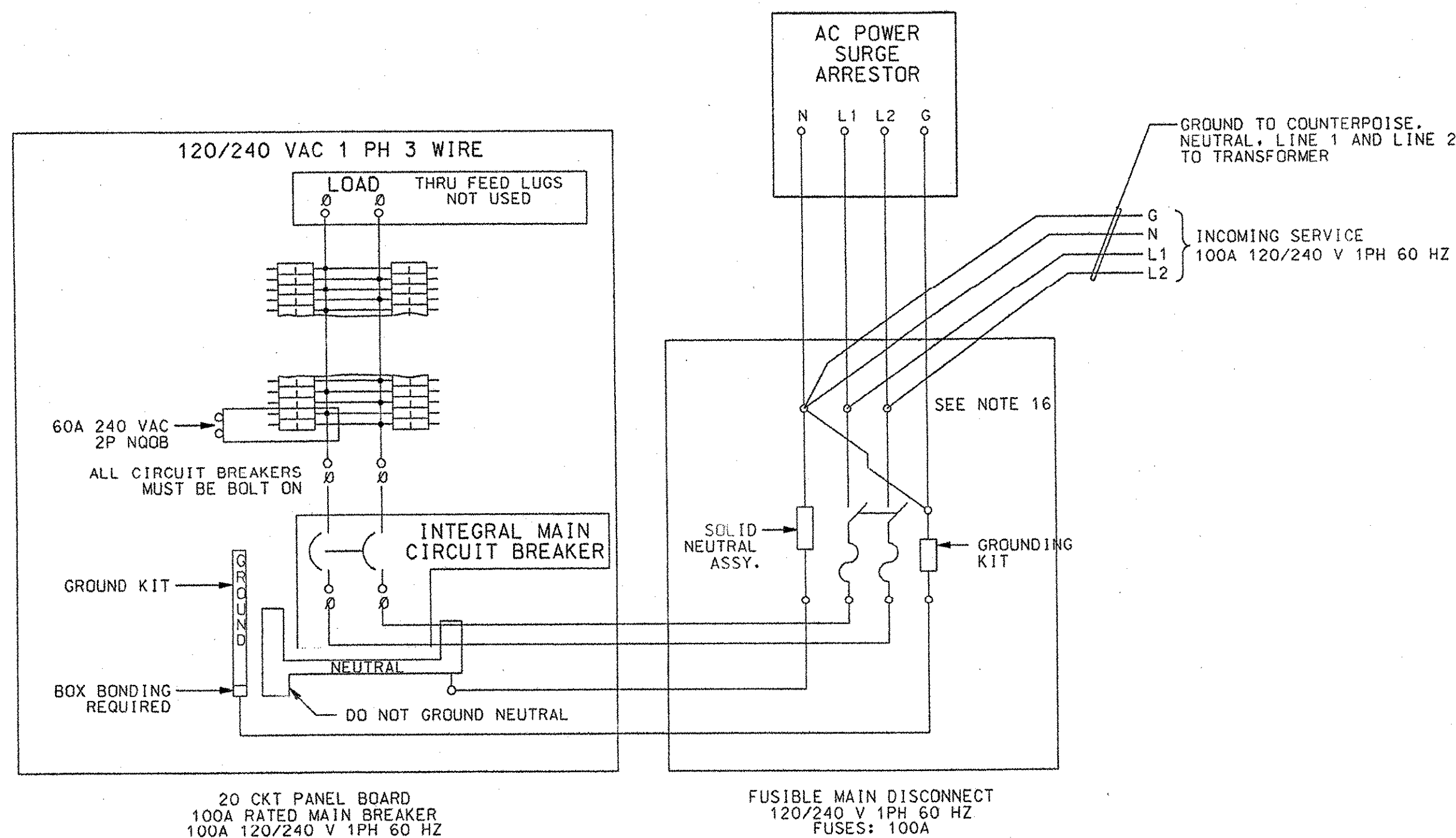
PHOTOCELL WIRED IN SERIES WITH SWITCH



EXTERIOR LIGHT WIRING
NOT TO SCALE

PANEL SCHEDULE

Ckt #	DESCRIPTION	100AMP MB LOADCENTER		120/240 VOLTS 1PH 60HZ		Ckt #	
		WIRE SIZE	AMP	WIRE SIZE	AMP		
1	INTERIOR LIGHTS	12	15	20	-	240 VAC	2
3	RECEPTACLES	12	20	20	-	SPARE	4
5	EXTERIOR LIGHTS	12	15	20	-	SPARE	6
7	EXTERIOR GFCT	12	20	20	-	SPARE	8
9	240 VAC	12	20	20	-	SPARE	10
11	RECEPTACLE	12	20	15	-	SPARE	12
13	HVAC	12	20	15	-	SPARE	14
15	UNIT	12	20	20	-	SPARE	16
17	240 VAC AUX. EQUIP.	6	60	15	12	FM POWER	18
19	EXTERIOR POWER FEED	6	60	20	12	FM CONV. RECEPTACLE	20



SERVICE WIRING
NOT TO SCALE