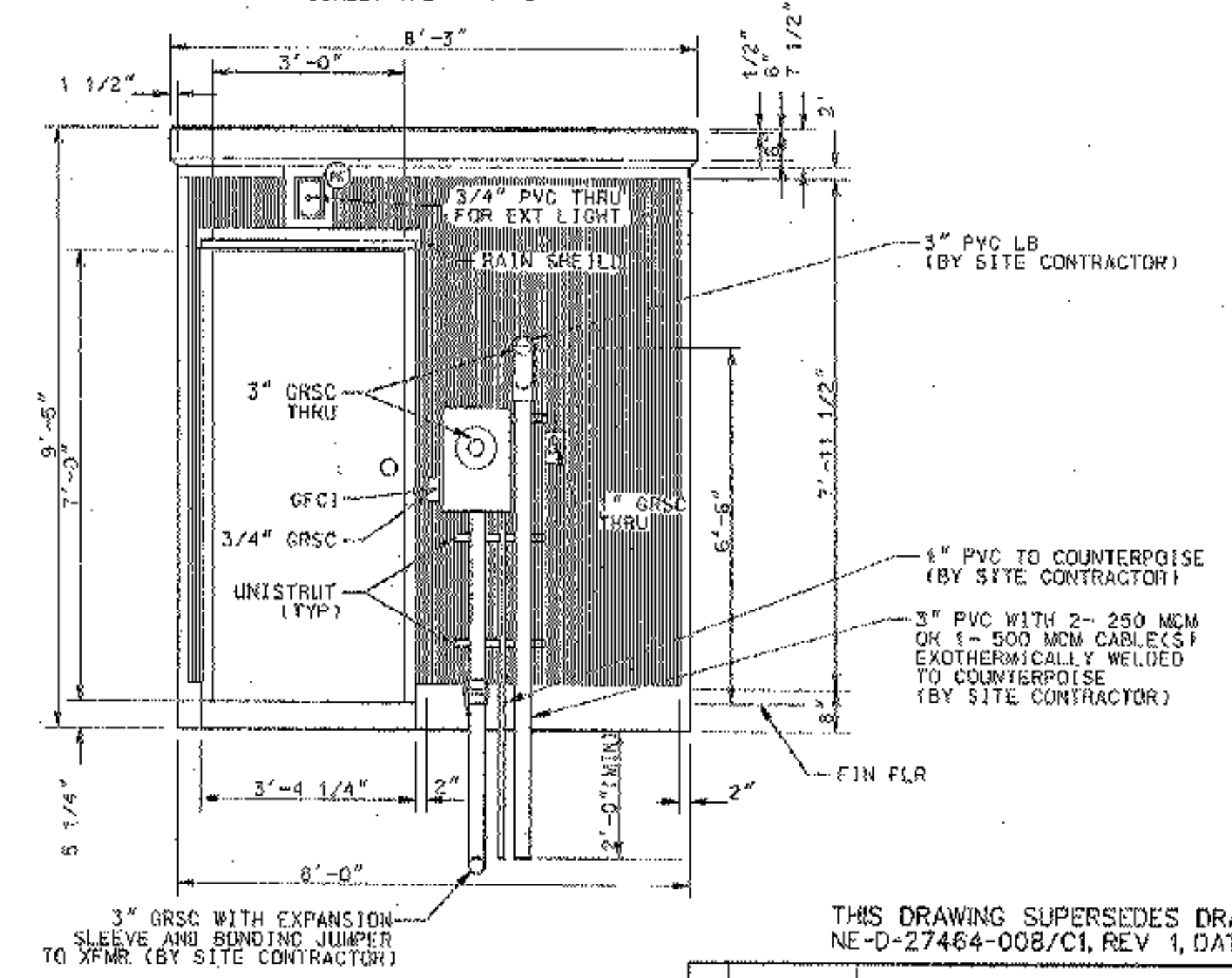
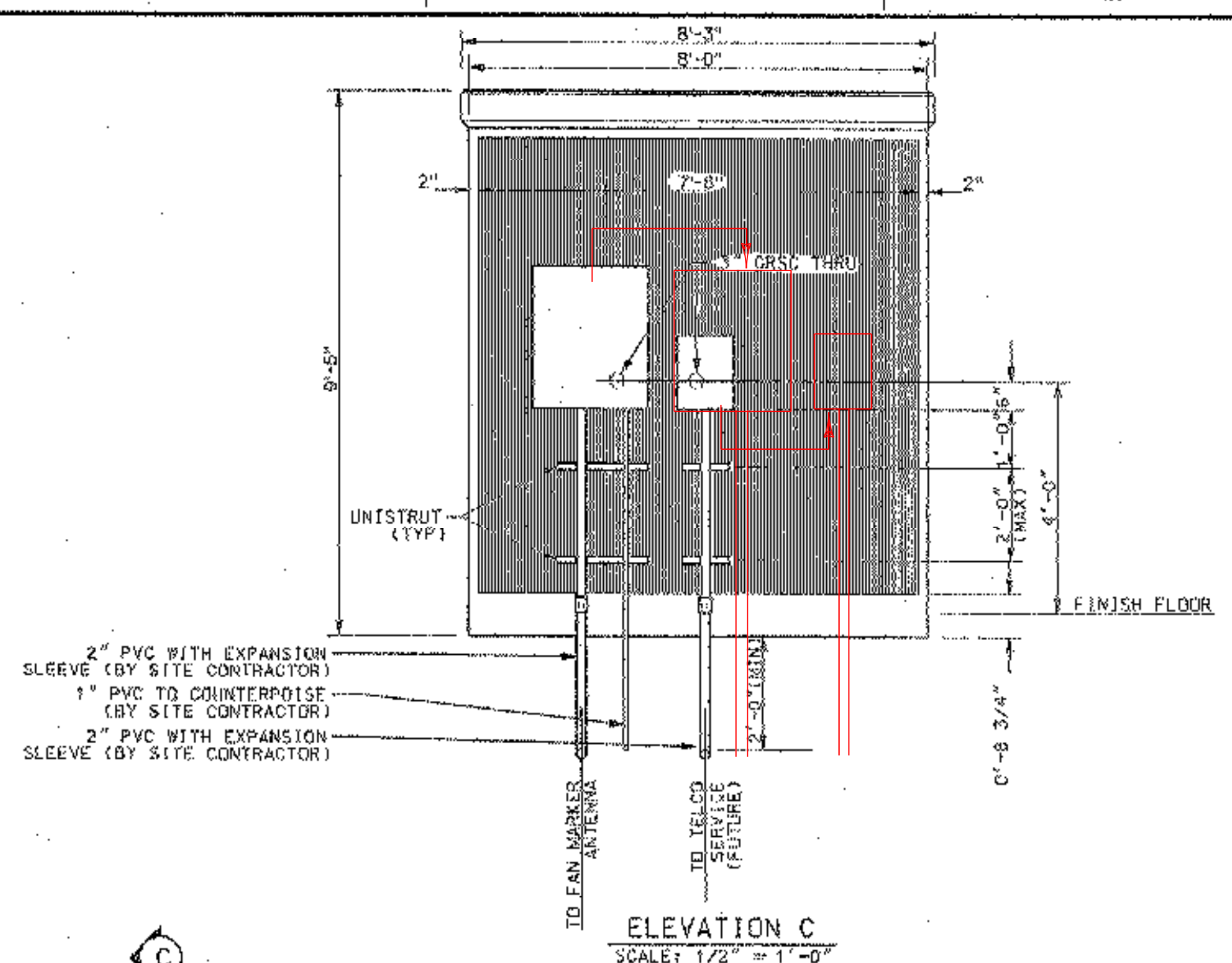
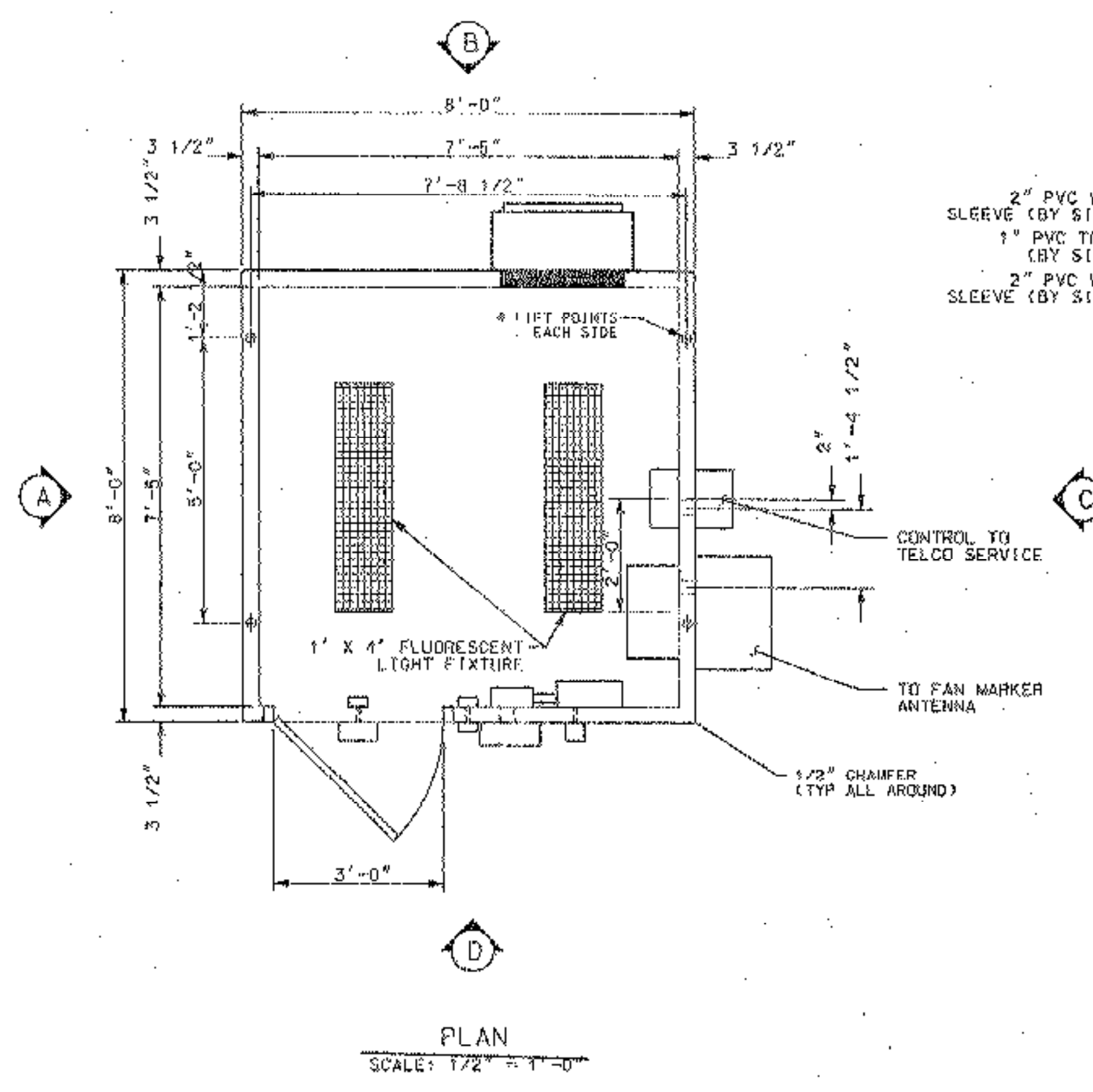
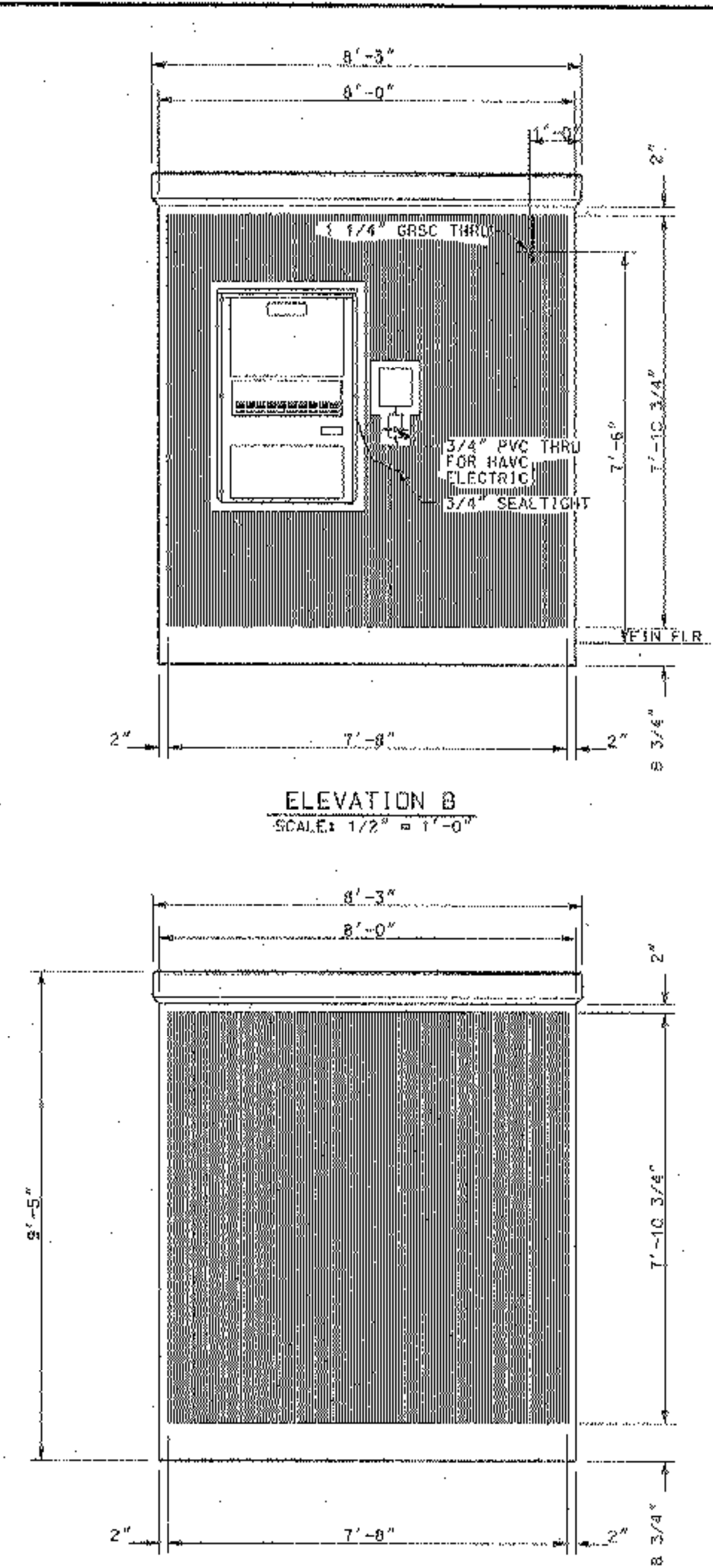


THIS DRAWING PRODUCED ON THE NEW ENGLAND REGION REPRODUCTION SYSTEM

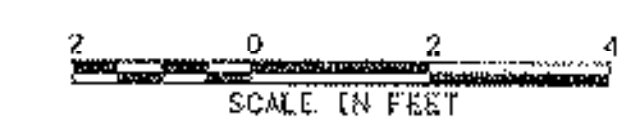


REFERENCE ONLY

THIS DRAWING SUPERSEDES DRAWING
NE-D-27464-008/CI, REV 1, DATED 11/02/1998

BILL OF MATERIALS											
ITEM	QTY	UNITS	DESCRIPTION	ITEM	QTY	UNITS	DESCRIPTION	ITEM	QTY	UNITS	DESCRIPTION
1	EA		SUNNEBORN CAULKING - NP-1	15	EA		THOMAS FEMALE KEEPER - 5601-50	29	EA		ACX PLYWOOD - 4' X 8' X 3/4"
2	FT		ADCO EPDM MEMBRANE - 653	16	EA		NATIONAL GUARD SWEEP - 188NA-36"	30	BOX		ARMSTRONG EXCELON FLOOR TILE ADHESIVE - 12" X 12" X 1/8"
3	EA		ADCO LAP SEALANT - LS-600	17	EA		NATIONAL GUARD WEATHERSTRIP - 160, 72" X 84"	31	GAL		PARABOND FLOOR TILE ADHESIVE - M269
4	GAL		ADCO PRIMER - BK-95	18	EA		NATIONAL GUARD DRIP CAP - 16AD-40"	32	EA		BLACK COVE BASE - 4" X 4"
5	GAL		THORO, THORCOAT, FINE (EXTERIOR) - COLOR: NATURAL SUEDE	19	EA		NATIONAL GUARD NOTCHED THRESHOLD - 424-36"	33	EA		OUTSIDE CORNER - BLACK COVE BASE - 4"
6	GAL		SHERWIN WILLIAMS INDUSTRIAL ENAMEL (DOOR) - COLOR: MCBEIGE	20	EA		HIGH "R" INSULATION - 2" X 8' X 2"	34	GAL		PARABOND COVE BASE ADHESIVE - M273
7	GAL		SHERWIN WILLIAMS INDUSTRIAL ENAMEL (PLYWOOD) - B-54, PURE WHITE	21	EA		ROUGH CUT LUMBER - 2" X 4" X 10'	35	EA		CDX PLYWOOD - 4' X 8' X 3/8"
8	EA		1 DOOR FRAME - 43070H3-43 WITH NM THRESHOLD, DRILL & TAP FOR 1804 OVER 130	22	EA		Z-CHANNEL - 2" X 10' X 25ga	36	EA		DOOR INTERIOR GRAB HANDLE
9	EA		CECO DOOR - RC3070MRG1	23	EA		FRP OVER 3/8" PLY, 4' X 8' X 1/2"				
10	EA		3 STANLEY HINGE - FBB179NRP, 4 1/2" X 4 1/2"	24	EA		FRP OVER 3/8" PLY, 4' X 8'				
11	EA		YON DUPRIN PANTIC HARDWARE - VD 22NL	25	EA		FRP CAP MOLDING, WHITE				
12	EA		1 BEST CYLINDER WITH CONSTRUCTION CORE - 1E-72	26	EA		FRP INSIDE CORNER, WHITE				
13	EA		1 LCN DOOR CLOSER - 4110 SERIES SMOOTHIE CUSH-N-STOP	27	EA		FRP DIVISION BAR MOLDING, WHITE				
14	EA		1 THOMAS MALE HOOK - 6-5601-25	28	EA		FRP OUTSIDE CORNER MOLDING, WHITE (2 PEICE) - 8'				
				29	EA		ACX PLYWOOD - 4' X 8' X 3/4"				

REV	DATE	DESCRIPTION	CHK	DATE	APPV
B	02/14/2002	PROPOSED/WR*0940/als		3428	01/08/2002
DEPARTMENT OF TRANSPORTATION FEDERAL AVIATION ADMINISTRATION BOSTON IMPLEMENTATION CENTER BURLINGTON, MA 01803 RUNWAY 19 (GL) FAN MARKER (FM) EQUIPMENT SHELTER EXTERIOR DETAILS					
CHITTENDEN		RUTLAND STATE AIRPORT		VT	
REVIEWED BY	DESIGNED BY	ISSUED BY	DATE	ISSUED BY	DATE
<i>[Signature]</i>	<i>[Signature]</i>	<i>[Signature]</i>	02/14/2002	<i>[Signature]</i>	02/14/2002
D. DAUDIER, ANI-180		NAS IMPLEMENTATION	AN-100		
CHECKED					



D:\work\2002\0214\021402\021402.dwg, 3/14/02, 10:52 AM, 3/14/02